

J
NORTH

J'
SOUTH

Elevation Above
Sea Level

3,950

3,700

3,450

3,200

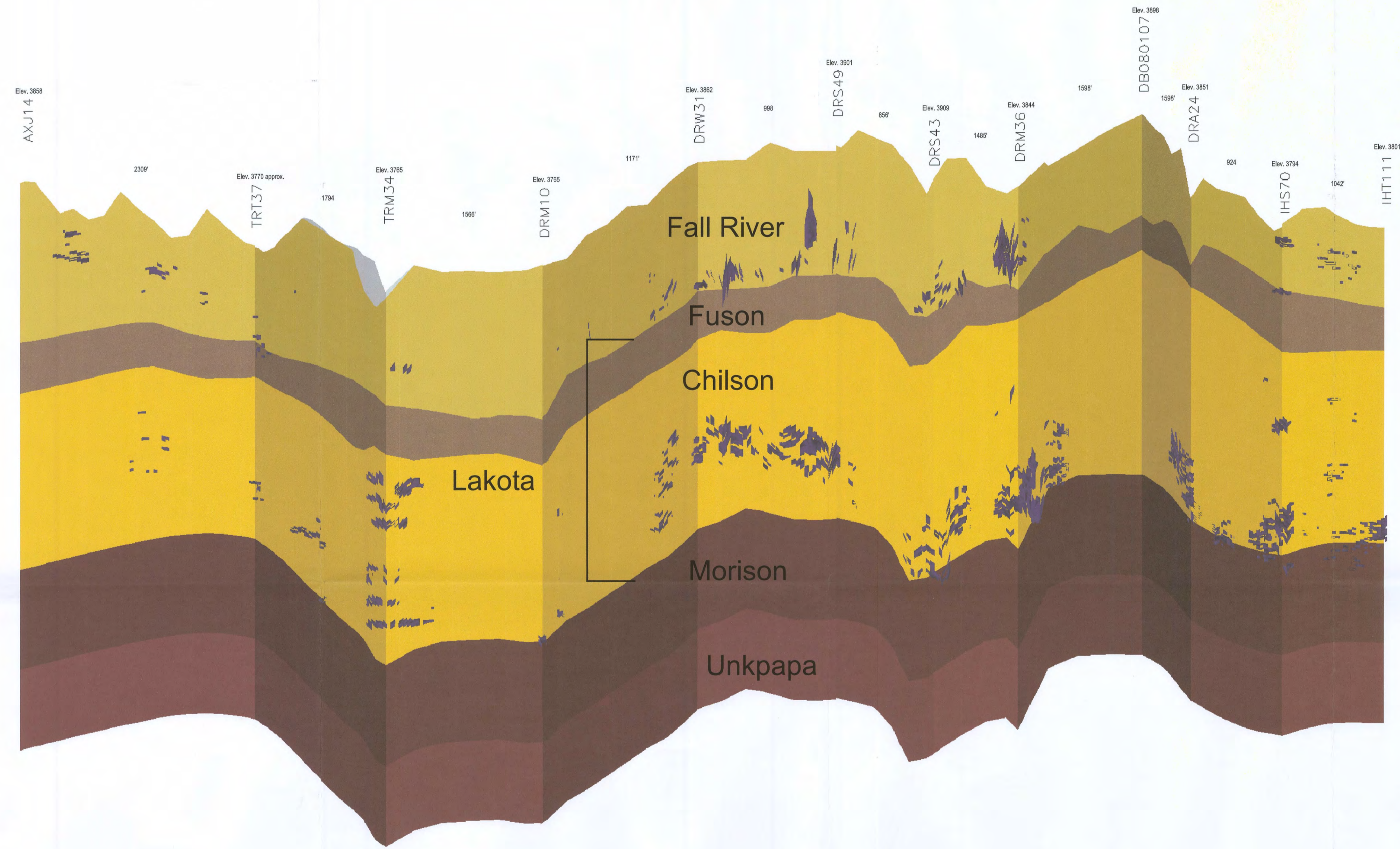
Elevation Above
Sea Level

3,950

3,700

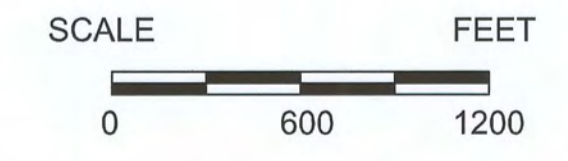
3,450


3,200



vertical exaggeration = 10X

Uranium Ore 0.02%
Grade Cutoff



CONSULTANT		REVISIONS		 POWERTECH (USA) INC. PLATE 2.6-14 Ore Cross Section J-J' Fall River & Custer Counties	
#	DRAWN	CHECKED	APPROVED		DATE
REF	CHECK SCALES		PROJECT	Dewey-Burdock Project	
			COORDS		
			SCALE	As Noted	
			FILENAME	c:\powertech\south dakota\dewey burdock\autocad\2008\sections 10-15-2008\F\sec J-J' ore 11-11-08.dwg	
				1 of 1	

DS1