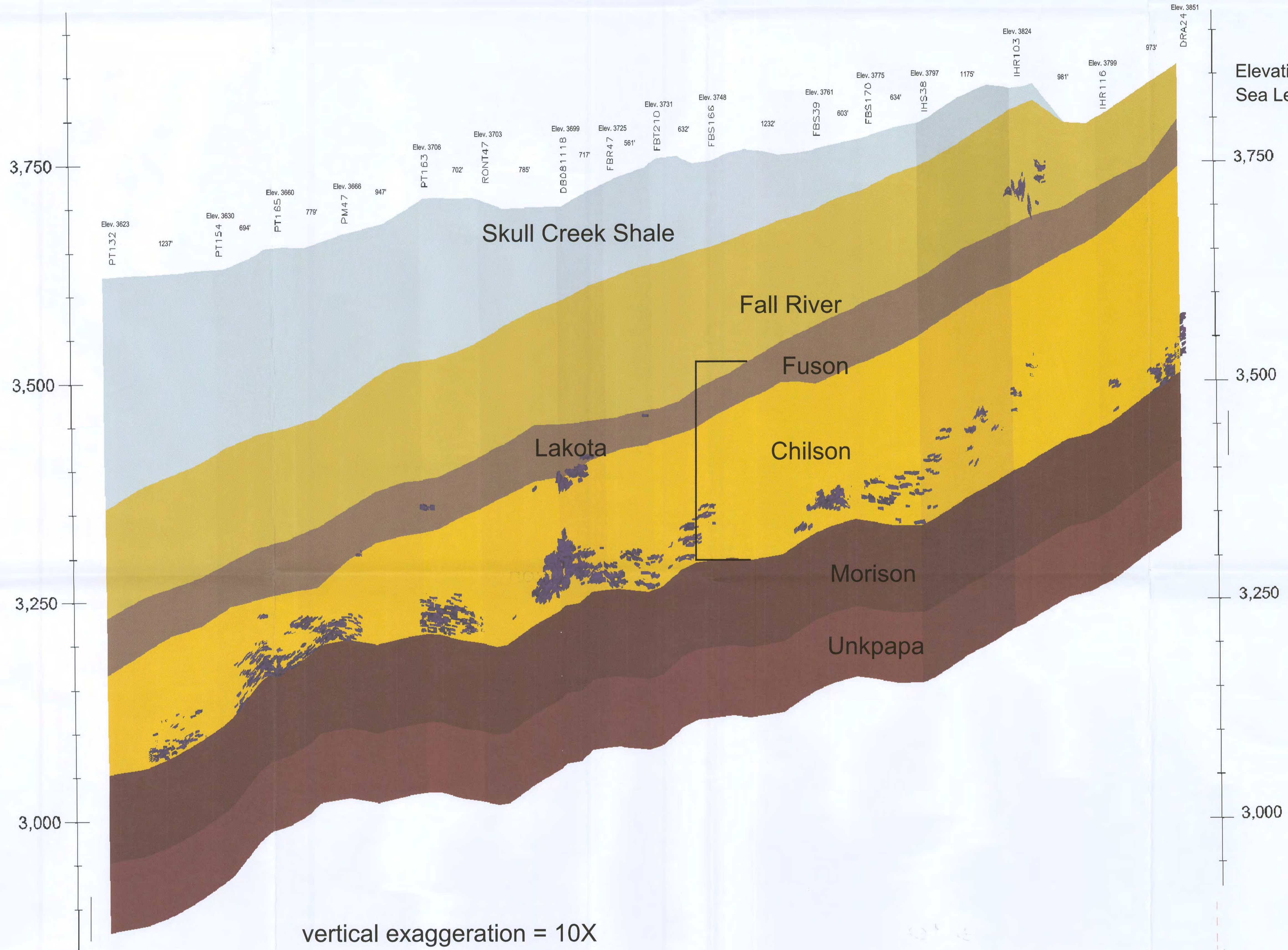


A
SOUTHWEST

A''
NORTHEAST

Elevation Above
Sea Level

Elevation Above
Sea Level



D48

CONSULTANT		REVISIONS				 POWERTECH (USA) INC.	
#	DRAWN	CHECKED	APPROVED	DATE	PLATE 2.6-11 Ore Cross Section A-A'' Fall River County		
					PROJECT Dewey-Burdock Project COORDS		
CHECK SCALES		PLOT DATE	DATE	PROJECT	FILENAME c:\powertech\south dakota\dewey burdock\autocad\2008\sections 10-15-2008a-a"xsec a-a" ore11-12-08.dwg		
If this bar does not measure 1 inch this map is not at its original scale.		12-Nov-2008	11-Nov-2008	Dewey-Burdock Project	1 of 1		
Arch D	24" x 36"	SCALE	As Noted				