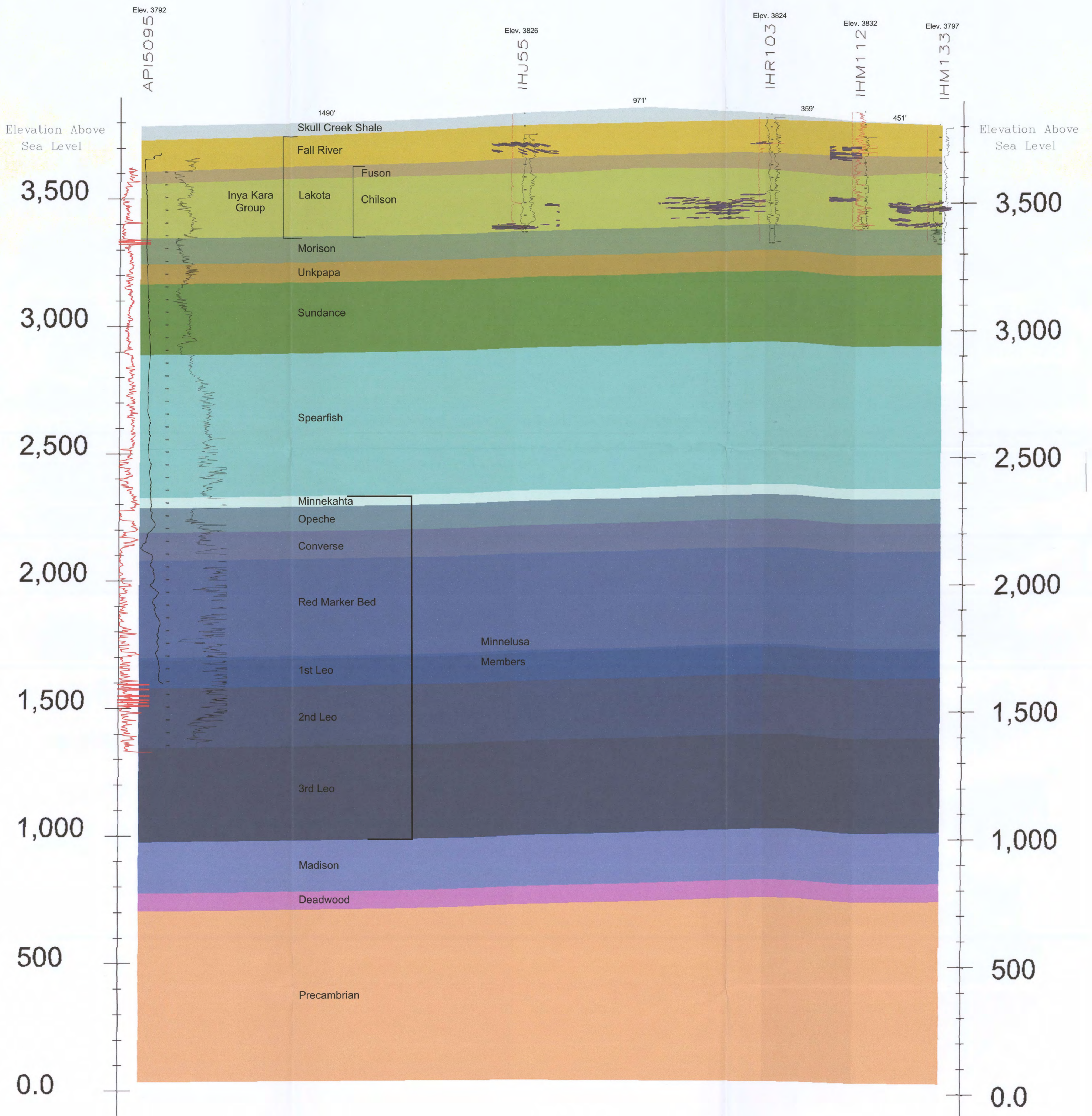


E  
Northwest

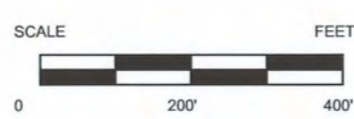
E'  
Southeast




Z=1X

D42

Uranium Ore 0.02%  
Grade Cutoff



CONSULTANT	REVISIONS				 <b>POWERTECH (USA) INC.</b> <b>Plate 2.6-5</b> <b>Generalized Cross Section</b> <b>Fall River County</b>
	#	DRAWN	CHECKED	APPROVED	
REF					
CHECK SCALES	If this bar does not measure 1 inch this map is not at its original scale.				PLOT DATE 11-Nov-2008 DATE DRAWN RC CHECKED SCALE As Noted FILENAME c:\powertech\south dakota\dewey burdock\autocad\2008\sections 10-15-2008\le-e'xsec e-e' ore1141-08.dwg
					PROJECT Dewey-Burdock Project