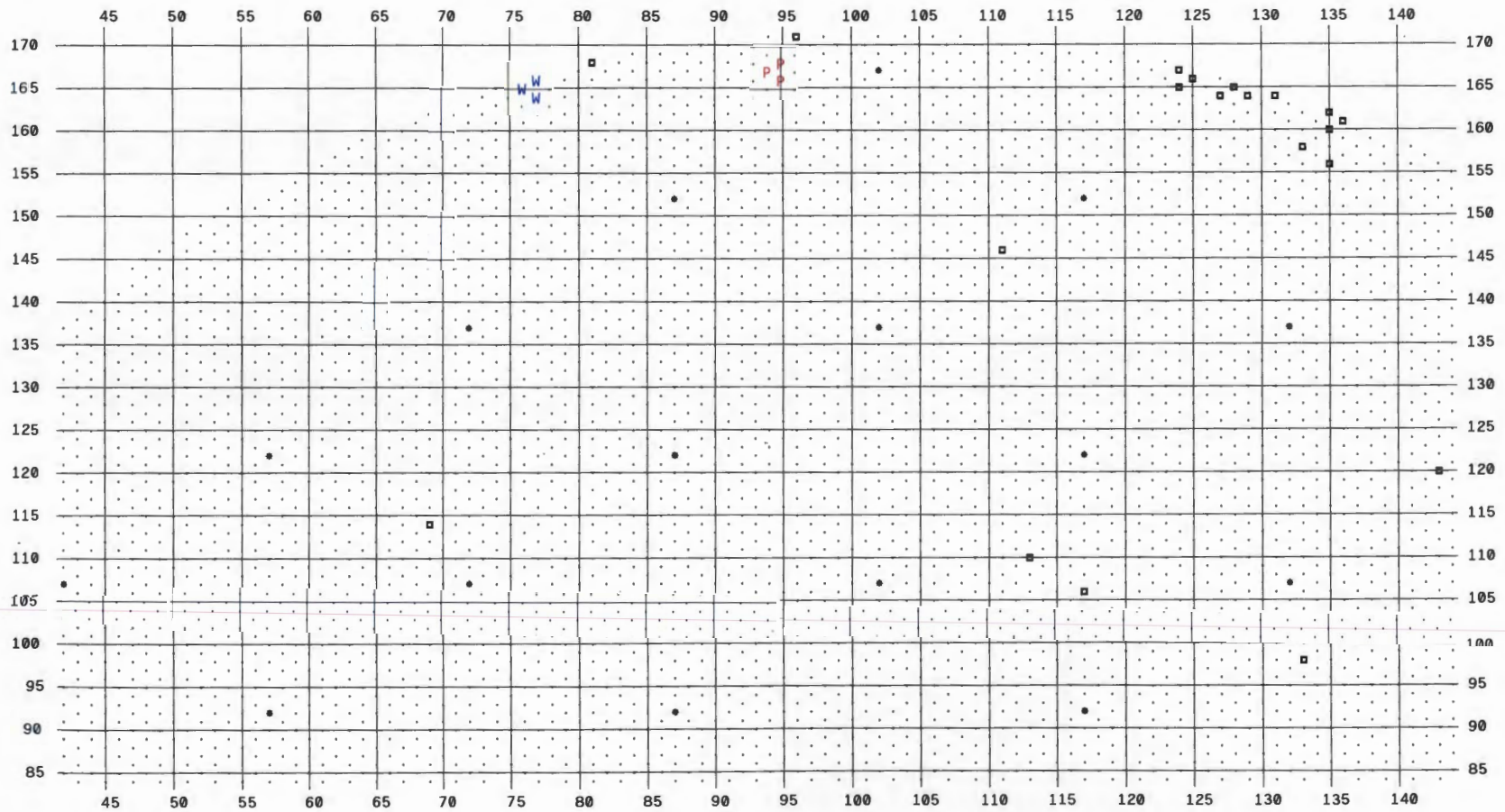
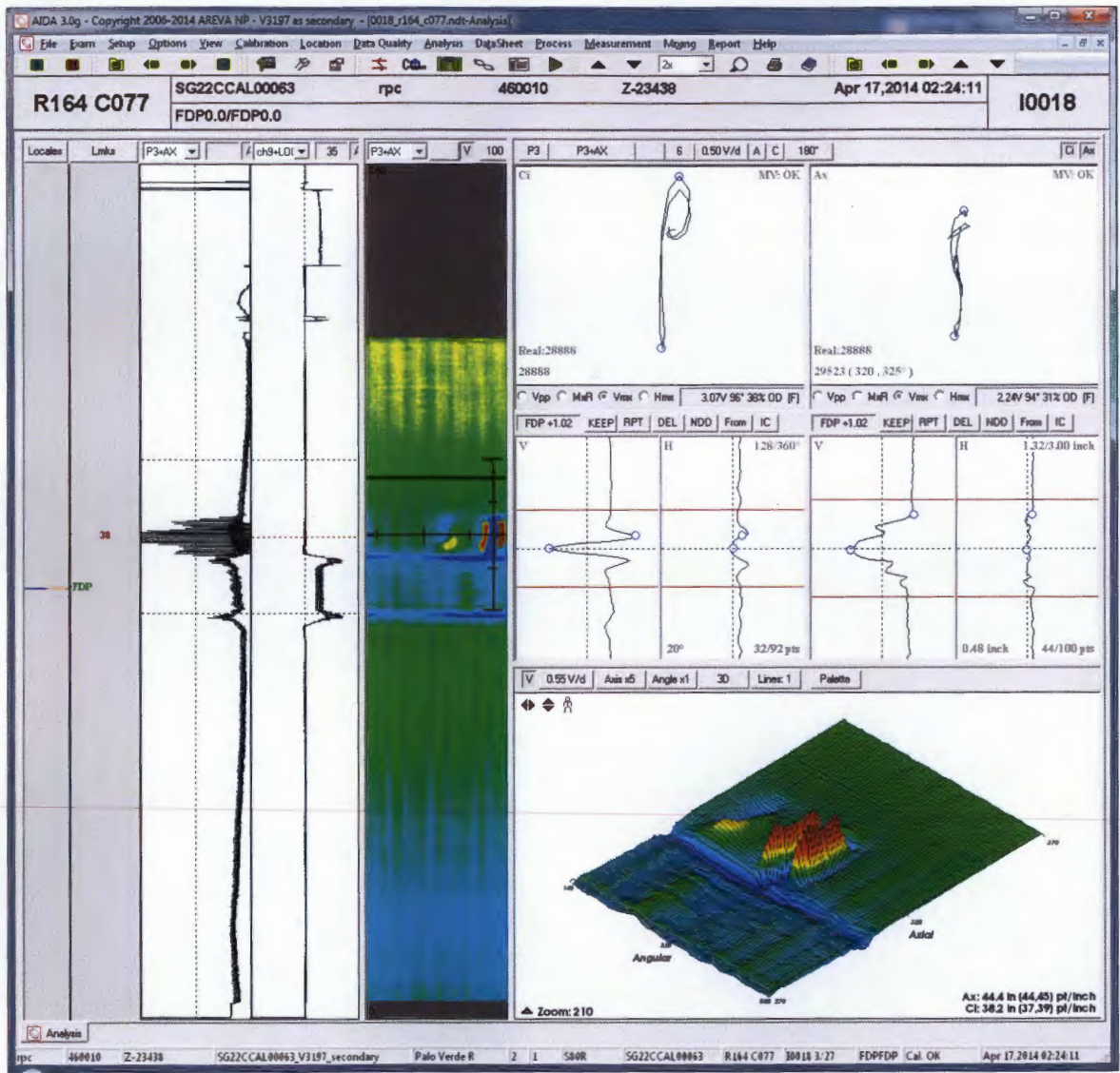


# SG - 22 FDC Wear and Part

Palo Verde U2R18 PVINGS2 2RSG

- ▣ 20 Plugged Tube
- 16 Stay Rod
- W 3 Tube with Wear
- P 3 Part Detected





WEAR – R164 L077

- Angle view

BACK

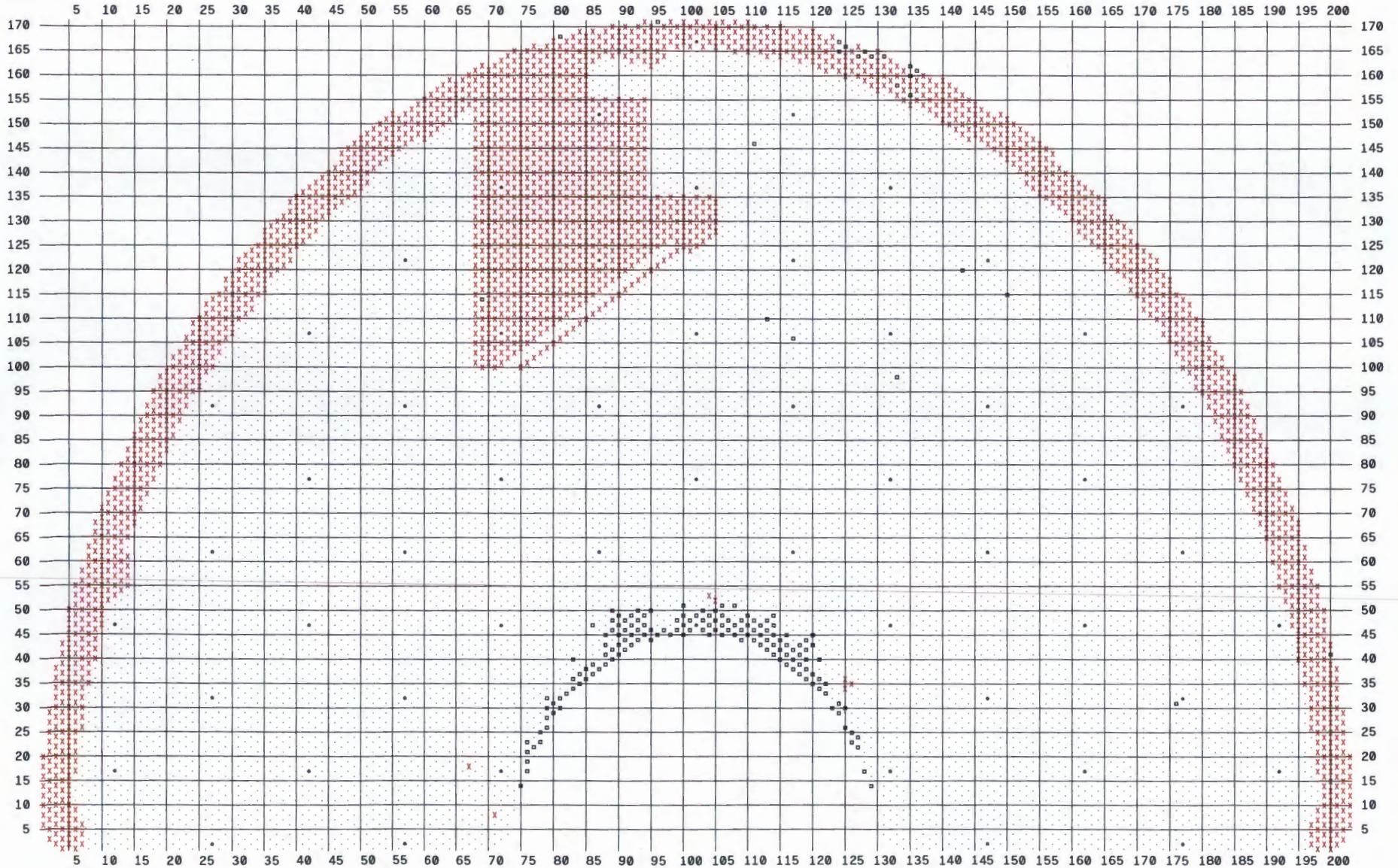
SG 22 HH 7 12-90



# SG - 22 Tubes +PT Tested at the FDP During U2R18

Palo Verde U2R18 PVNGS2 2RSG

- 53 Stay Rod
- 173 Plugged Tube
- X 2103 +PT Tested at FDP



EDIT PAGE 1 L02 C01

22018