

Vogtle



units 3&4 Nuclear Development

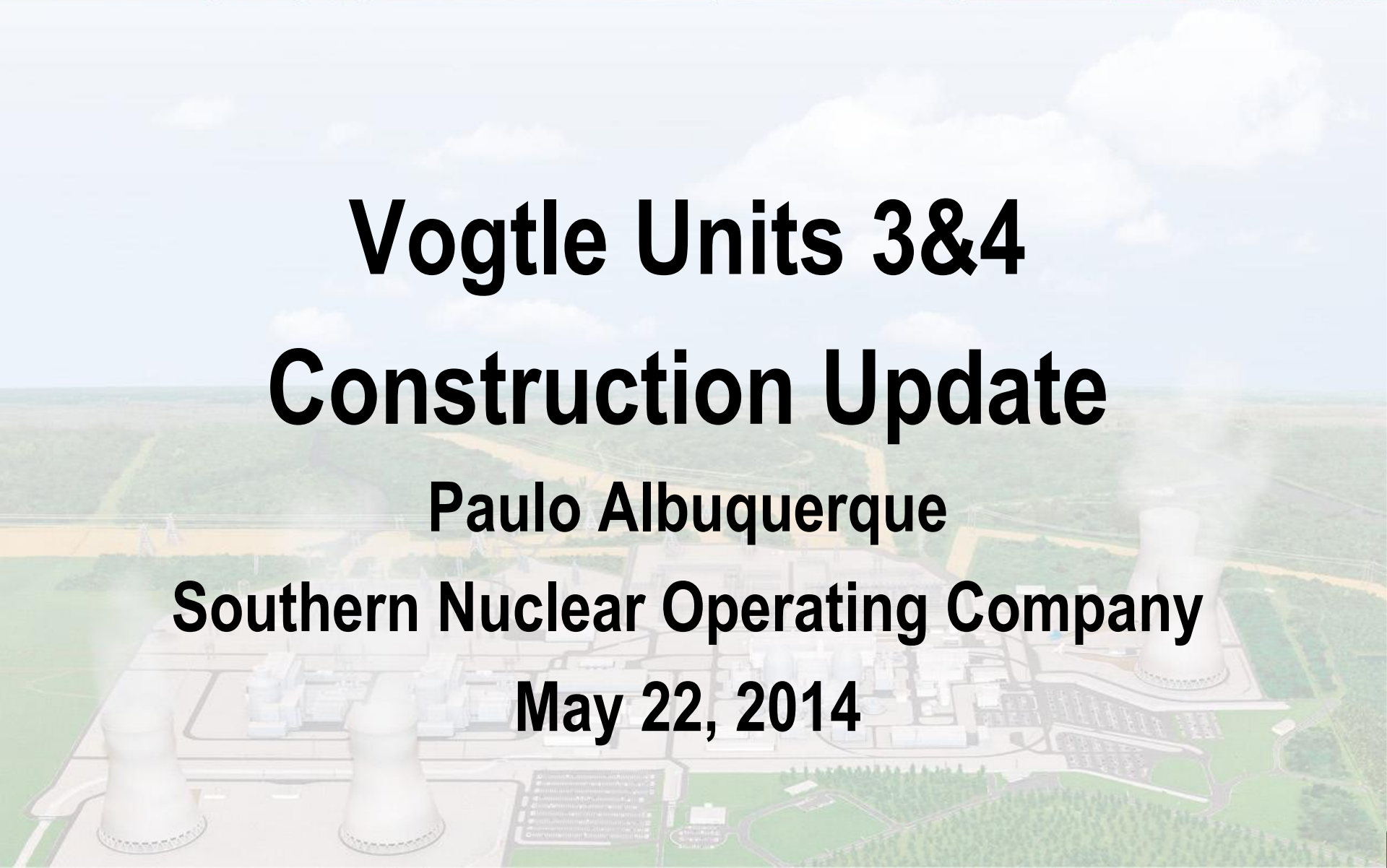


Vogtle Units 3&4 Construction Update

Paulo Albuquerque

Southern Nuclear Operating Company

May 22, 2014



Safety

**Safe, Quality, Compliant
Construction is our
priority.**

Vogtle
units 3&4



Nuclear Development

Recently Completed Milestones

- Unit 3 Reactor Vessel Cavity placed
- Unit 3 Aux. Bldg (CA-20) module placed
- Unit 3 Condensers placed in Turbine Island
- Unit 3 Cooling Tower reaches 300 feet
- Unit 4 CR10 cradle
- Unit 4 bottom head placed
- Unit 4 Reactor Vessel arrives

U3 Containment Vessel



CA04 module inside the Vogtle Unit 3 containment vessel bottom head, with CA20 module in the background.

April 2014

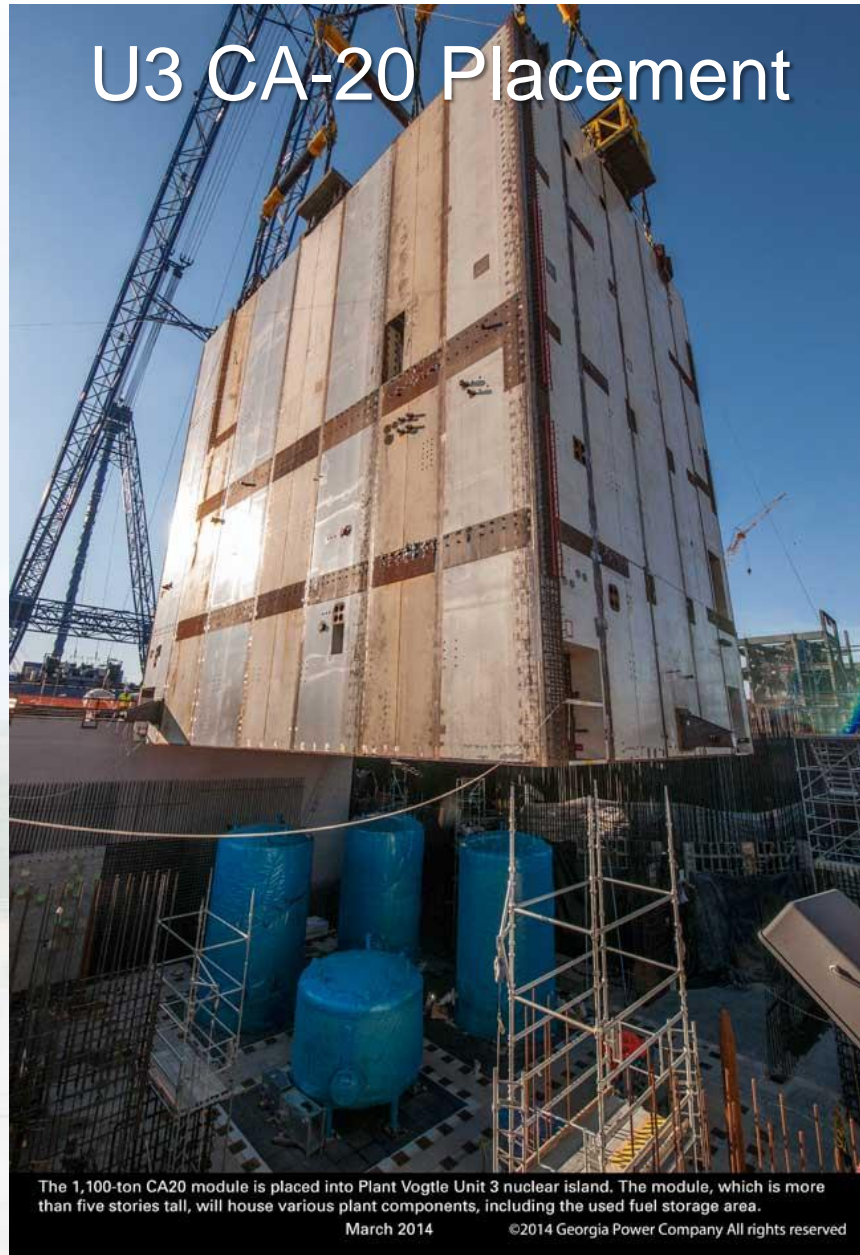
©2014 Georgia Power Company All rights reserved

Vogtle
units 3&4



Nuclear Development

U3 CA-20 Placement



Vogtle
units 3&4



Nuclear Development

U3 Turbine Island



Condensers A, B and C in the Vogtle Unit 3 turbine island

April 2014

©2014 Georgia Power Company All rights reserved



Vogtle
units 3&4 Nuclear Development

U3 Cooling Tower



Vogtle Unit 3 cooling tower construction.

March 2014

©2014 Georgia Power Company All rights reserved

Vogtle
units 3&4



Nuclear Development

U4 CR10 “cradle” module



The CR10 “cradle” module inside the Vogtle Unit 4 nuclear island.

March 2014

©2014 Georgia Power Company All rights reserved

Vogtle
units 3&4



Nuclear Development

U4 Bottom Head Placement

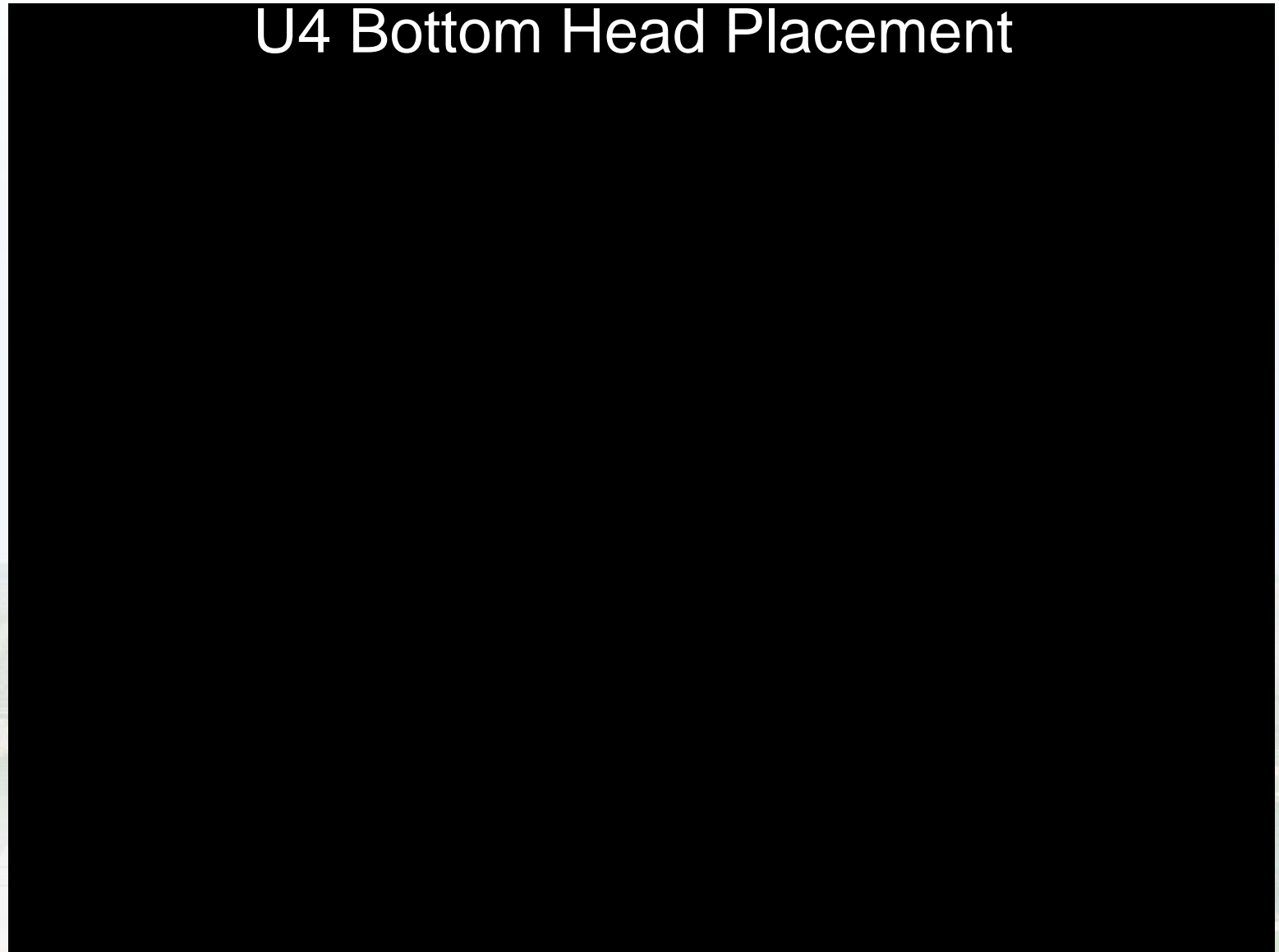


Vogtle
units 3&4

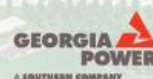


Nuclear Development

U4 Bottom Head Placement



Vogtle
units 3&4



Nuclear Development

U4 Reactor Vessel Arrives On-Site



Vogtle
units 3&4



Nuclear Development

Artist Rendering of Vogtle Units 1-4



Vogtle
units 3&4



Nuclear Development

Questions?



Vogtle
units 3&4



Nuclear Development