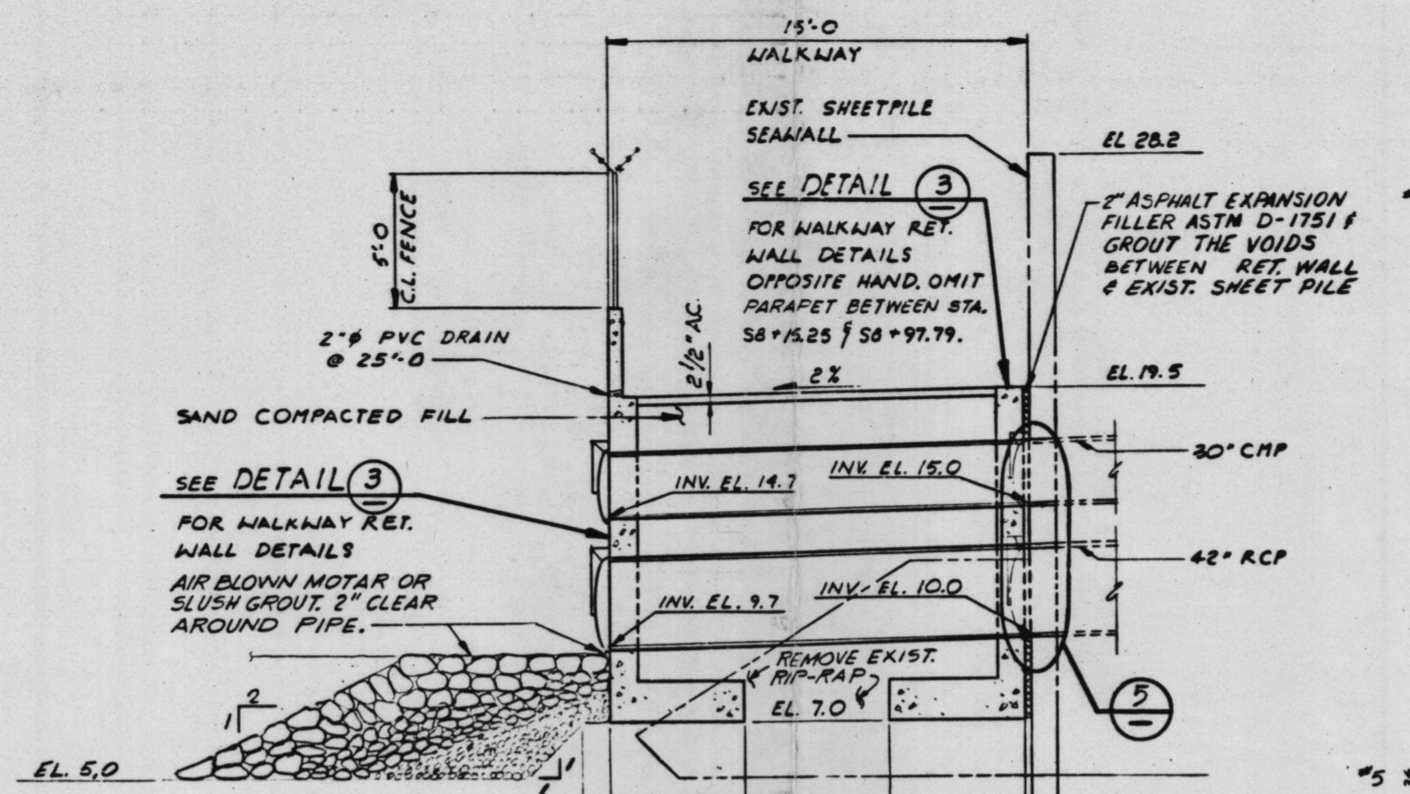
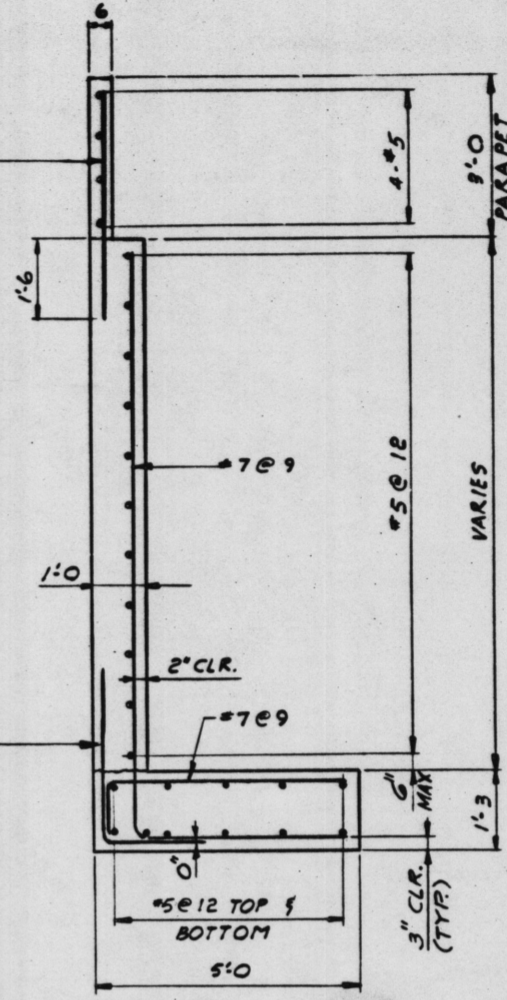


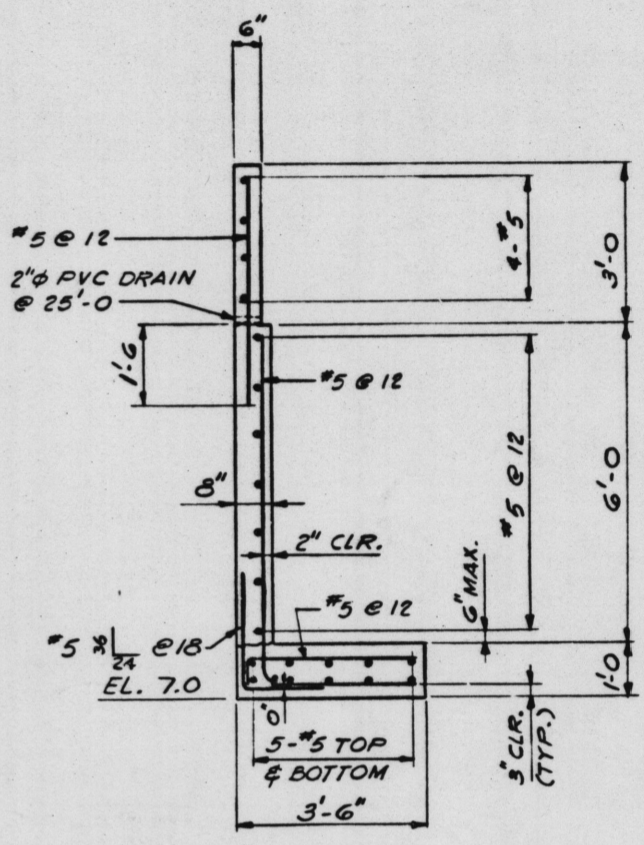
SECTION A  
N.T.S.



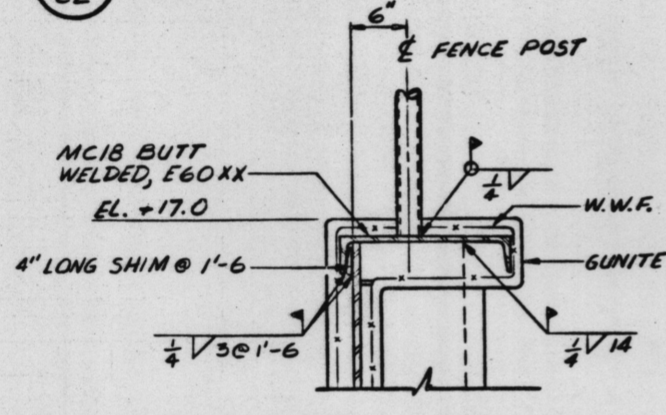
SECTION B  
1/4" = 1'-0"



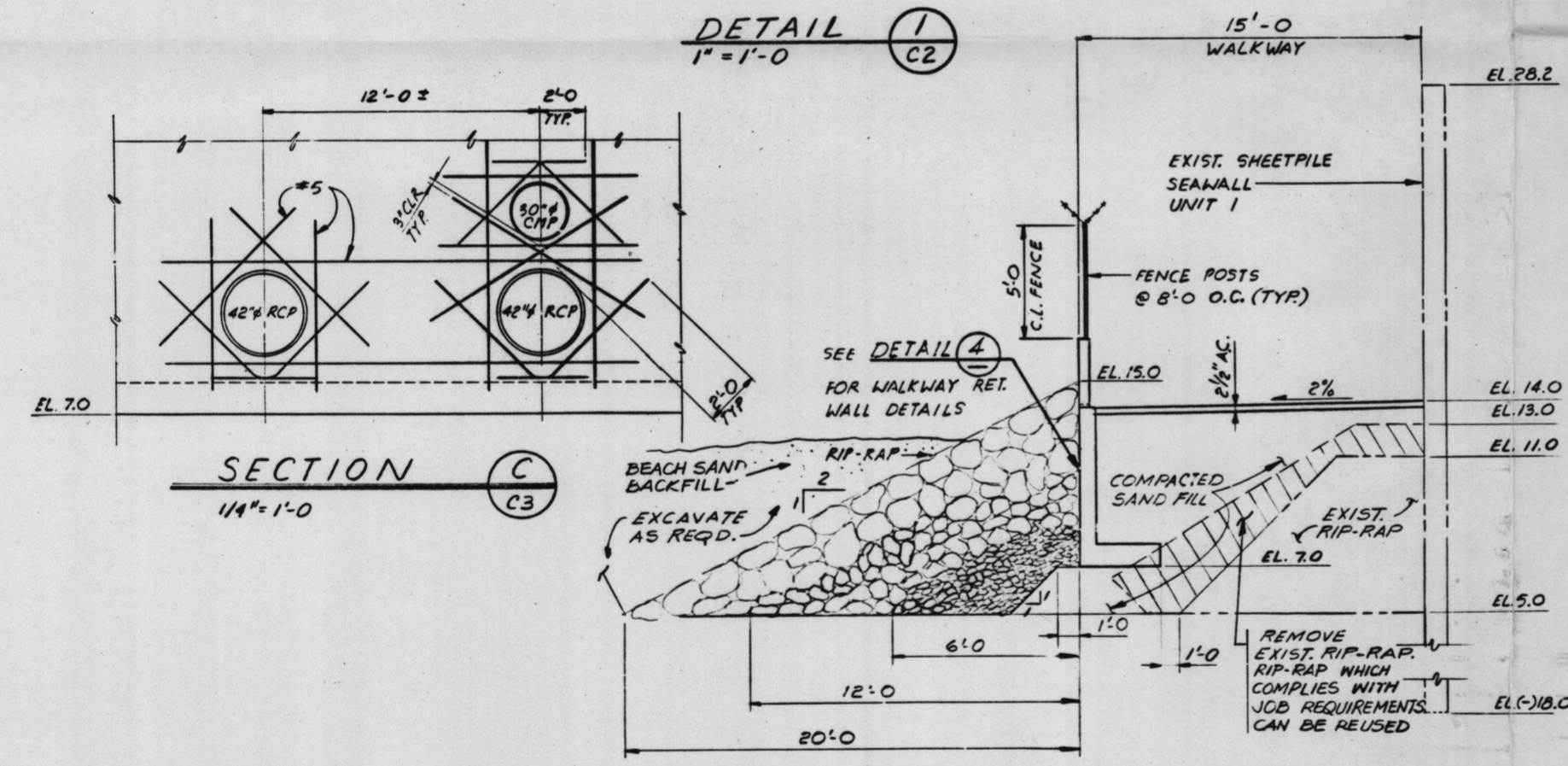
WALKWAY RETAINING WALLS - STAS. 56+97.79 TO 57+76.21  
DETAIL 3  
1/2" = 1'-0"



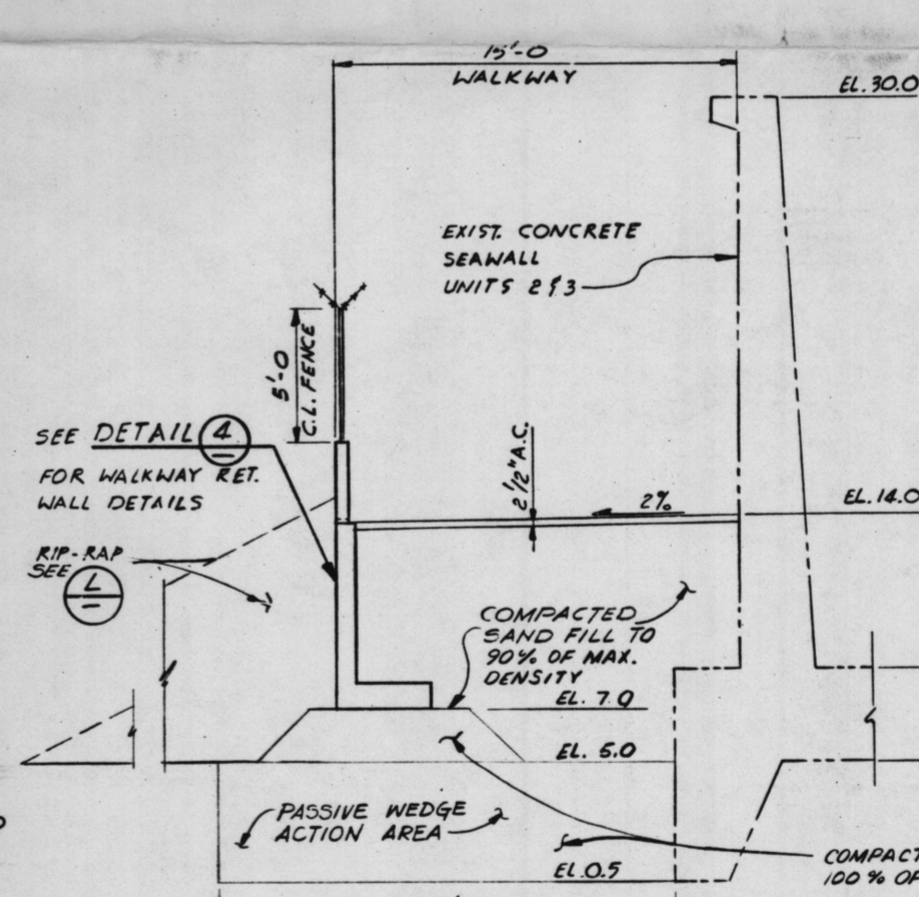
DETAIL 4  
1/2" = 1'-0"



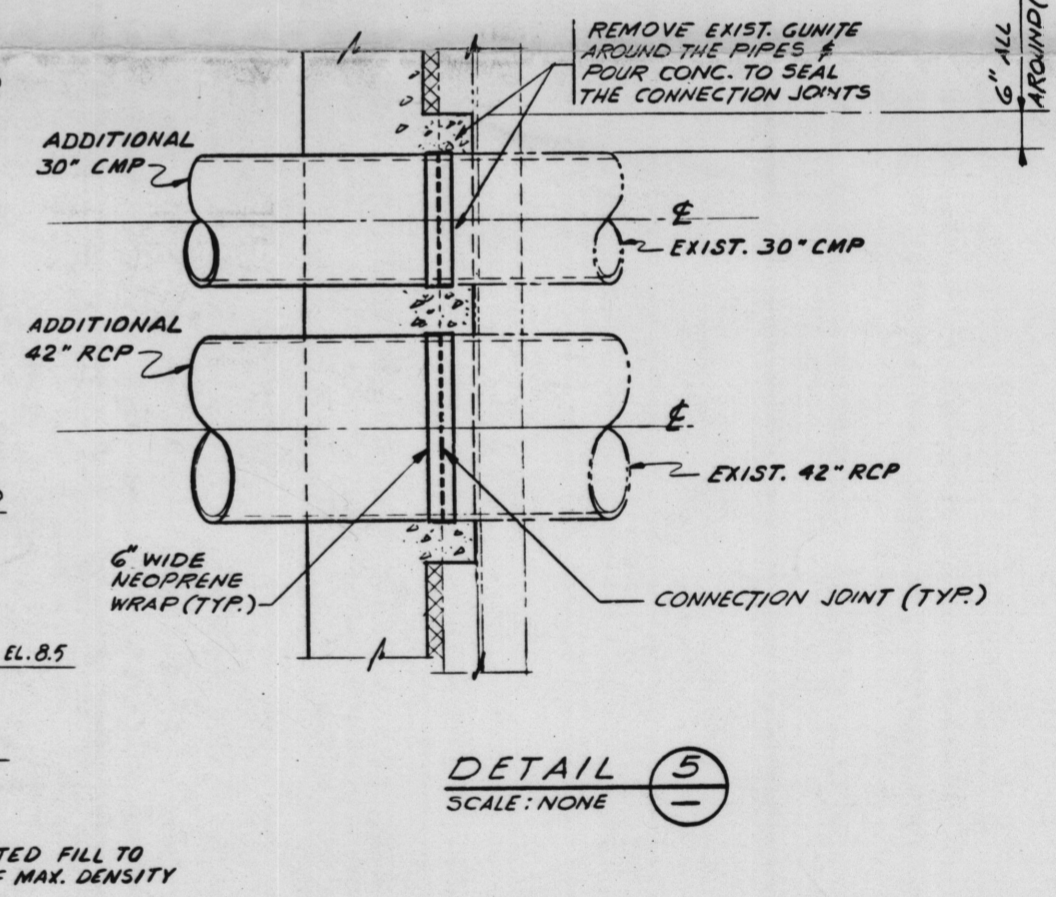
DETAIL 1  
1" = 1'-0"



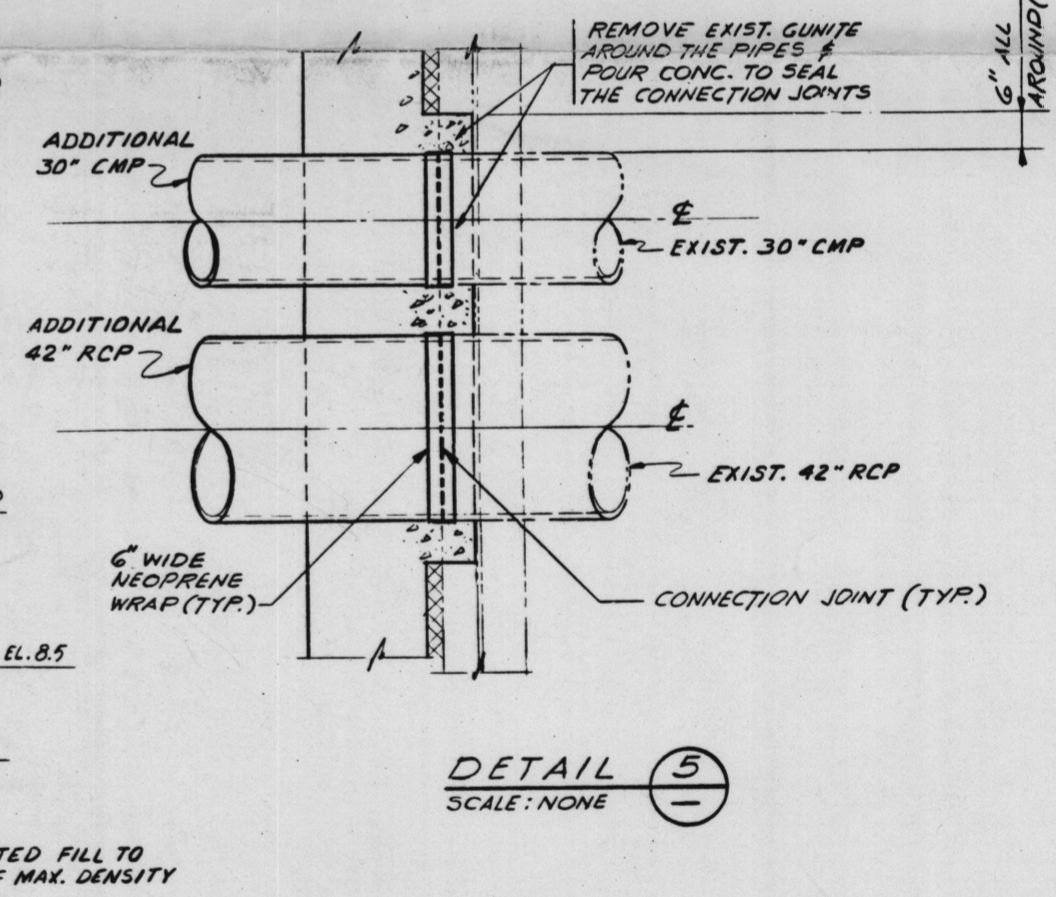
SECTION C  
1/4" = 1'-0"



SECTION L  
1/4" = 1'-0"



SECTION M  
1/4" = 1'-0"



DETAIL 5  
SCALE: NONE

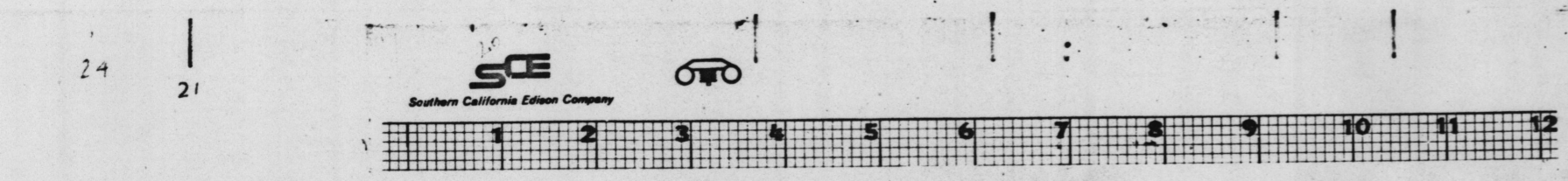
REGISTERED CIVIL ENGINEER C18616  
JL

NO.	REVISIONS	M.	DATE	P.E.	Q.A.E.	SUPV.	APPROVED	ENGR.	CK'D.	MADE	J.O. NO.	NO.	REVISIONS	M.	DATE	P.E.	Q.A.E.	SUPV.	APPROVED	ENGR.	CK'D.	MADE	J.O. NO.	NO.
0	ISSUE FOR CONSTRUCTION		11-26-13																					

UNITS 1, 2 & 3 Q.C. IV.

LOCATION SAN ONOFRE NUCLEAR GEN. STA.  
BEACH WALKWAY  
SECTIONS AND DETAILS  
SCE EDISON  
4 OF 5 SHEETS

5180943-0



26X

REGULATORY DOCKET FILE COPY  
Docket # 50-206  
Control # 8104270355  
Date 4-20-81 of Document  
REGULATORY DOCKET FILE  
8104270371