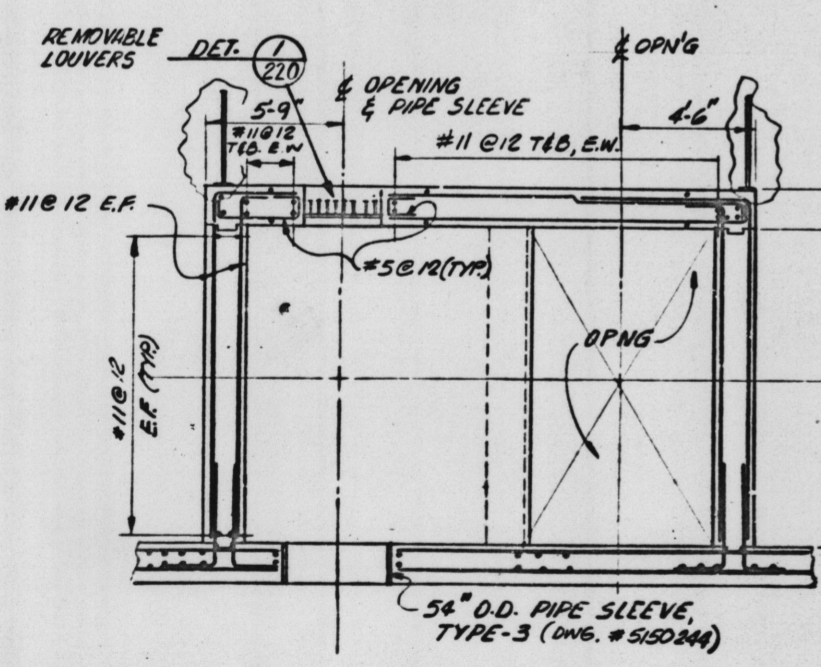
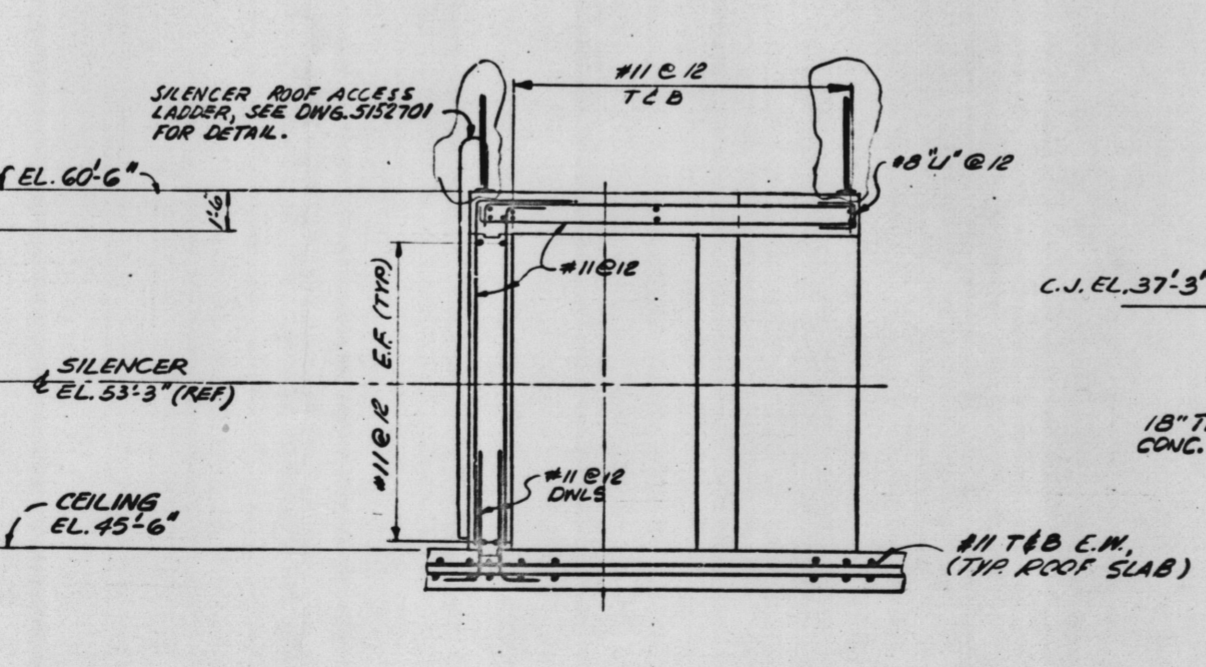


ROOF PLAN
SCALE: 1/8"=1'-0"

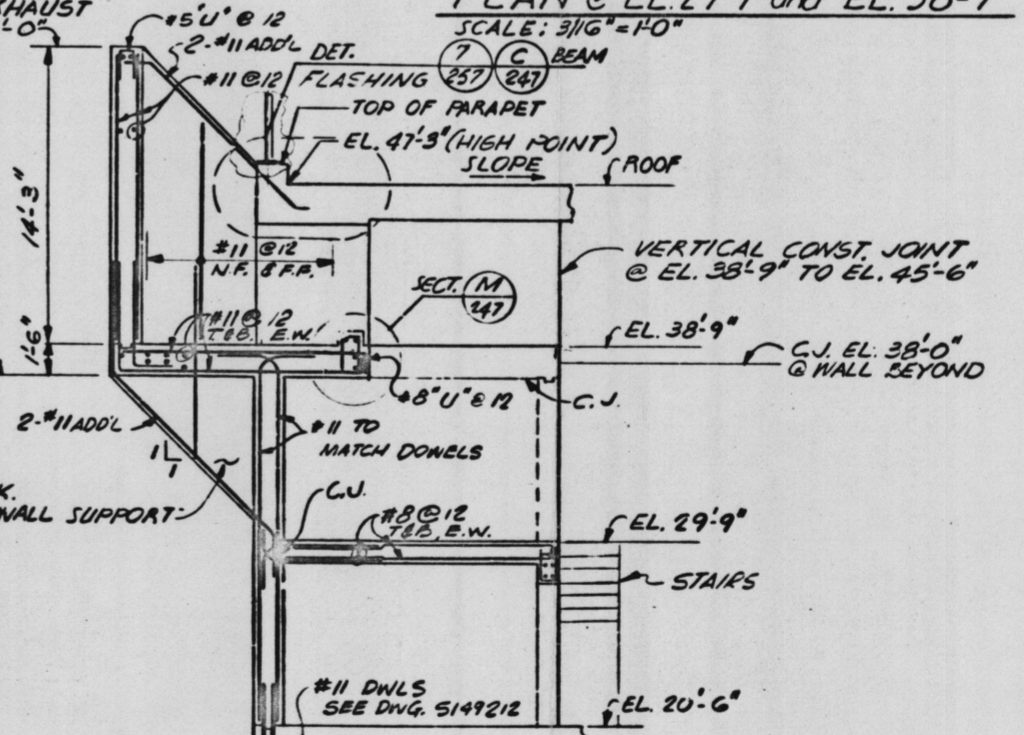
PLAN @ EL. 29'-9" and EL. 38'-9"
SCALE: 3/16"=1'-0"



SECTION J
SCALE: 1/4"=1'-0"



SECTION K
SCALE: 1/4"=1'-0"



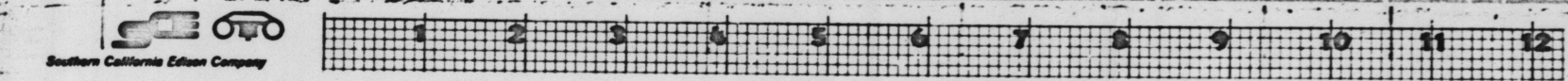
SECTION L
SCALE: 3/16"=1'-0"

- NOTE: TEMPORARY ELECTRICAL CONDUIT BLOCKOUT**
- FOR ELEC. CONDUIT BLOCKOUT LOCATION, REFER TO DWG. 5149337.
 - MAX. BLOCKOUT OPENING SHALL BE 3" LARGER AROUND THAN CONDUIT CONFIGURATION OR AS SHOWN ON DWG. 5149337.
 - WHERE CONDUITS PENETRATE UPPER CONCRETE SLABS, BLOCKOUTS SHOULD CLEAR UNDERLYING WALLS.
 - SPECIFICATION TOLERANCES SHALL BE MAINTAINED FOR REINFORCING STEEL DISPLACEMENT IN BLOCKOUT AREA.
 - ALL BLOCKOUTS WILL BE GROUTED BACK IN AFTER CONDUITS HAVE BEEN INSTALLED.
- PROCEDURE FOR TEMPORARY CONDUIT CHIP-OUT FOR ELECTRICAL CONDUITS**
- CHIP-OUT THE CONC. IN THE DESIGNATED LOCATION AS INDICATED IN THE DRAWINGS.
 - THE MAX. CHIP-OUT OPENING SHALL BE 3" LARGER AROUND THE CONDUIT CONFIGURATION.
 - WHEN CONDUITS PENETRATE CONC. SLABS OR WALL, THE CHIP-OUT CONC. SHOULD CLEAR UNDERLYING WALLS.
 - EXPOSE THE REBARS WHICH ARE LOCATED INSIDE THE CHIP-OUT AREA WITHOUT CUTTING OR DAMAGING THEM.
 - FIT THE CONDUITS BETWEEN EXPOSED REBARS MAINTAINING SPEC. TOLERANCES BETWEEN REBARS AND CONDUITS AND/OR BETWEEN CONDUITS.
 - CLEAN THE LOOSE CONCRETE AND APPLY "EPOXY" BONDING AGENT TO ALL EXPOSED CONC. SURFACES.
 - FILL THE REMAINING OPENING OF THE CHIP-OUT AREA WITH CONCRETE OR GROUT WHICHEVER IS SHOWN IN THE DRAWINGS.

Reference Drawing	No.	Revisions	Date	Approved	O.K.	O.K.	CLY.	Made	J.D. No.	Scale
5149307	GENERAL NOTES									
5149311	PLAN @ EL. 29'-9" - OUTLINE	6	CCN # 17	EFF. DATE: IMMEDIATE	4/5/77					
5149312	DWG. LIST	5	CCN # 15, 16	EFF. DATE: IMMEDIATE	3/3/77					
82-6220	SPEC. NO.	4	ADDED CCN # 12, 13 & 14	EFF. DATE: IMMEDIATE	10/2/76					

SAFETY RELATED (UNLESS OTHERWISE NOTED)		UNIT-1	
6-30-76	1	DHJ	1
5/17/76	2	WJC	1
3/17/76	3	WJC	1
1/23/76	4	WJC	1
1/23/76	5	WJC	1
1/23/76	6	WJC	1
1/23/76	7	WJC	1
1/23/76	8	WJC	1
1/23/76	9	WJC	1
1/23/76	10	WJC	1
1/23/76	11	WJC	1
1/23/76	12	WJC	1
1/23/76	13	WJC	1
1/23/76	14	WJC	1
1/23/76	15	WJC	1
1/23/76	16	WJC	1
1/23/76	17	WJC	1
1/23/76	18	WJC	1
1/23/76	19	WJC	1
1/23/76	20	WJC	1

5-7



26X

MICROFILMED FROM
BEST AVAILABLE COPY

PRC APERTURE CARD
8209170116
REGULATORY DOCKET FILE COPY

5149213-6

Docket # 50-206
Control # 8209170106
Date 09-13-82 of Document:
REGULATORY DOCKET FILE