

8108200428

CONFIGURATION CHANGE

SHEET 1 OF 2

REQUEST NOTICE

NUMBER 4

DATE 5-25-78

CLASS: CRITICAL ROUTINE

REQUESTED BY SPECIFICATION DRAWING PROCEDURE INSTRUCTION

K. LOWDER

NUMBER 455437

REVISION 3

CLASS SR

TITLE ELEMENTARY DIAGRAM
SEAL WATER TO
VOLUME CONTROL TANK

VENDOR MICHELL COISON

DESCRIPTION OF CHANGE
INCORPORATE THE FOLLOWING CHANGES

1. ADDED LOC. NOS. Y13, Y14 & C09; ADDED "CS" TO CONTROL SWITCH
 2. ADDED WIRE NOS. 3X8 & U; CHANGED RELAY 410Y TO 410X; ADDED NOTE "EXCESS LETDOWN SEALWATER HT. EX. STOP CV-412" TO CONTACT 2-B OF 410X
 3. DELETED CONTACT LS-5 OF MOV-LCV-1100D & CONTACT 1-3 OF RELAY 411X
 4. REPLACED WIRE NOS. 410S2, 410S1, 410N, 410X, 410RG & 410RR WITH C1, C11, U, C12, C13 & C3 RESP.
 5. ADDED REF. DWGS. 5154354, 233843 & 233844.
 6. ADDED DEVICES "410X, 411X, CS(HS-410) & CS(HS-411); BKCR. "8-1308, DWG. 5130359" SCHEME NOS. 1FY1308 & 1GY1402 & LOC. NOS. Y13 & Y14 TO EQUIPMENT TABLE. DELETED INTERLOCKS LCV-1100D(LS-5) & LCV-1100E(LS-6)
- OTHER AFFECTED DWGS: 233843, 233844.
EFFECTIVITY DATE: IMMEDIATELY

JUSTIFICATION
SFA-1 (MOV-LCV-1100B.C.D & E)

PART OF MODIFICATION TO PROVIDE TRAIN SEPARATION FOR MOV-LCV-1100B & D.

SIGNATURE *McL. Marsh*

EVALUATION

EVALUATION - APPROVE REJECT

REASON

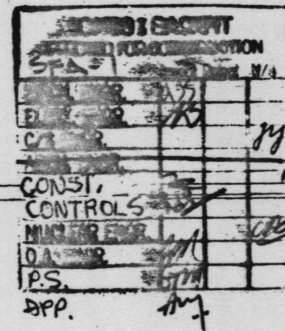
REGISTERED PROFESSIONAL ENGINEER

DECISION - APPROVE REJECT

COMMENT

PROJECT ENGINEER

STAMP



SIGNATURES

DESIGNER *Michael Marsh* X

PROJECT GROUP LEADER

QUALITY ASSURANCE ENGR. *Michael Marsh* X

OTHER CHECKER

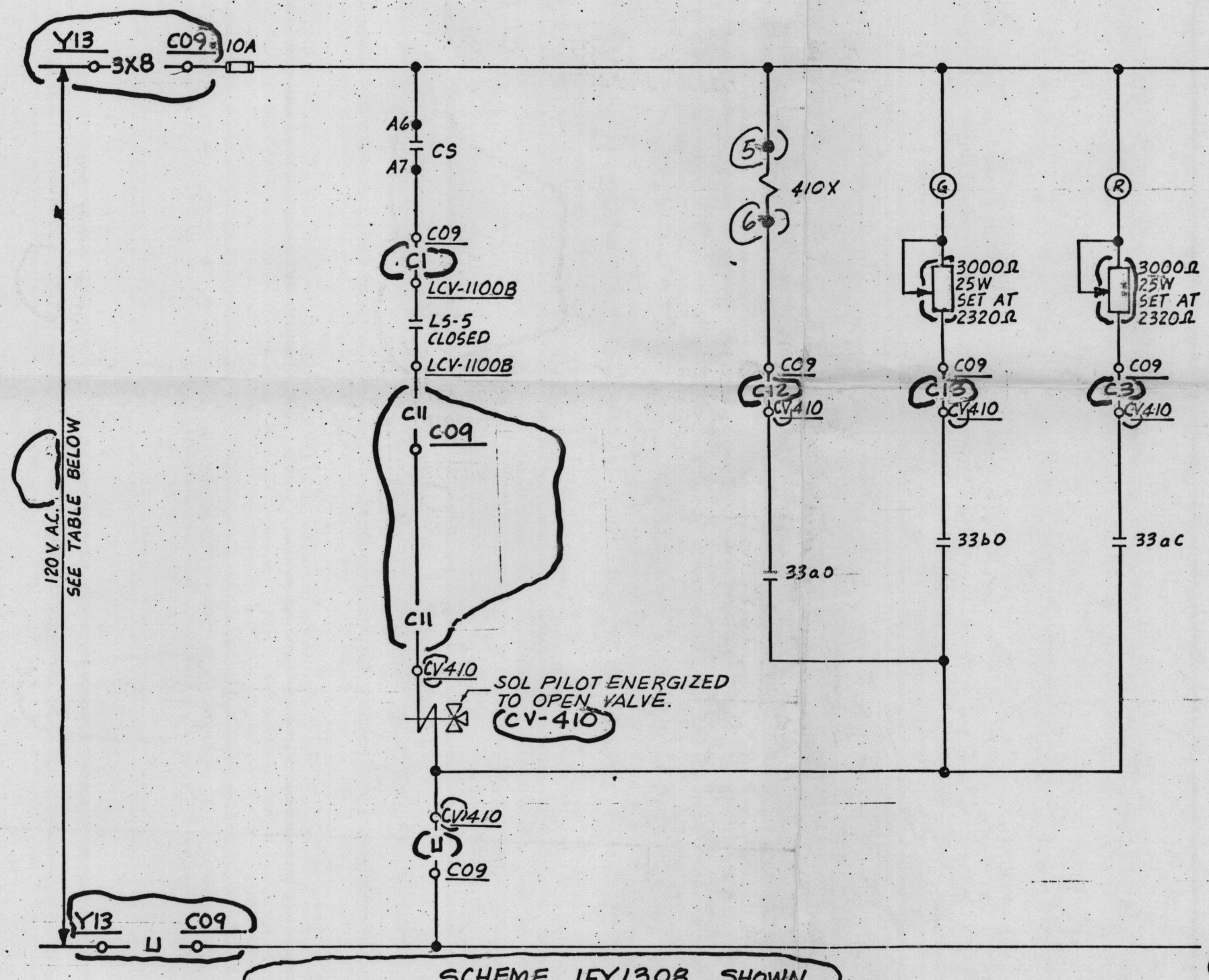
Michael Marsh X

TERA APERTURE CARD

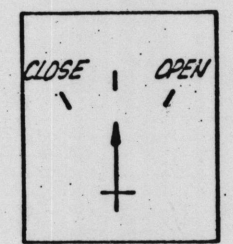
REGULATORY DOCKET FILE COPY

Docket # 50-206
Control # 8108200403
Date 8-18-81 of Document
REGULATORY DOCKET FILE

16X



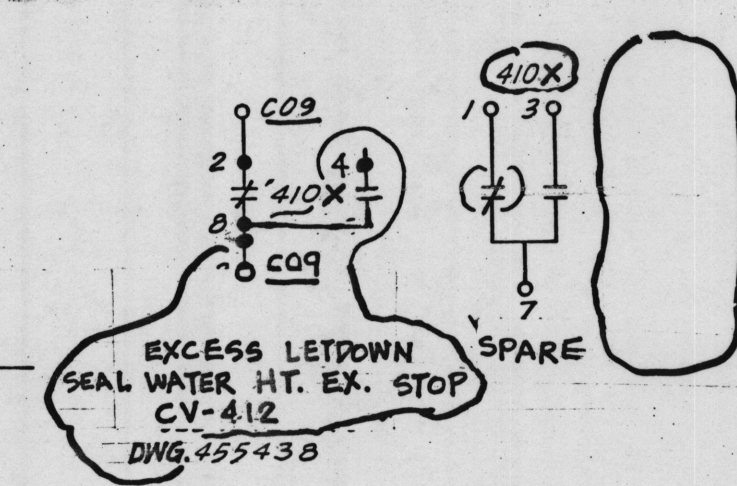
CONTACT	POSITION		
	CLOSE	AFTER CLOSE	AFTER OPEN
A11 - B11	X		
A12 - B12		X	X
A1 - B1			X
A5 - B5	X	X	
A6 - A7			X
B5 - B7	X	X	X



CONTROL SWITCH (CS)
 SPRING RETURN TO NEUTRAL BLACK OVAL
 FIXED HANDLE W TYPE W2

CONTACTS	CONTACT DEVELOPMENT		
	CLOSE	INTERMINATED	OPEN
ac			
bc			
bc			

VALVE POSITION SWITCH (33) OPERATION
 VALVE POSITION.



AFTER
 Drwg. # 455437-3
 CGN # 4
 Sheet # 2 of 2

VALVE	FUNCTION	LOCATION	SCHEME NO.	INTERLOCK	POWER SOURCE	DEVICE
CV410	SEAL WTR. TO V.C. TANK STOP	Y13	C09	IFY1308	LCV-1100B (LS-5)	410X CS (HS-410)
CV411	SEAL WTR. TO V.C. TANK STOP	Y14	C09	IGY1402	LCV-1100D (LS-6)	411X CS (HS-411)

SONGS I
 SAFETY RELATED
 SOLENOID VALVE

(1542 SH 82)
 BECHTEL #3246-W-12-190-0

REDRAWN FROM WEST EDSK 323139-B SH23

5154354	E.D. MOV-LCV-1100D
233843	LOGIC DIAG. CONT. V. CV-410
233844	LOGIC DIAG. CONT. V. CV-411
455389	E.D. MOV-LCV-1100 B
5149629	DEVICE FUNCTION N'S / SYMBOLS
5149964	EQUIP. LOCATION INDEX
5149181	SEQUENCER No. 2
63715	SAFETY INJECTION SYSTEM

Revisions	Date	Approved	OK	OK	CK'd	Made	I.O. No.	No.	Scale	Revisions	Date	Approved	OK	OK	CK'd	Made	I.O. No.
									NONE								

Southern California Edison Company **SCED**

14.5X

REGULATORY DOCKET FILE COPY

Docket # 50-206
 Control # 8108200403
 Date 8-18-81 of Document
 REGULATORY DOCKET FILE

Reject