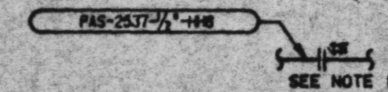
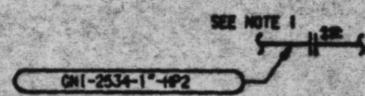
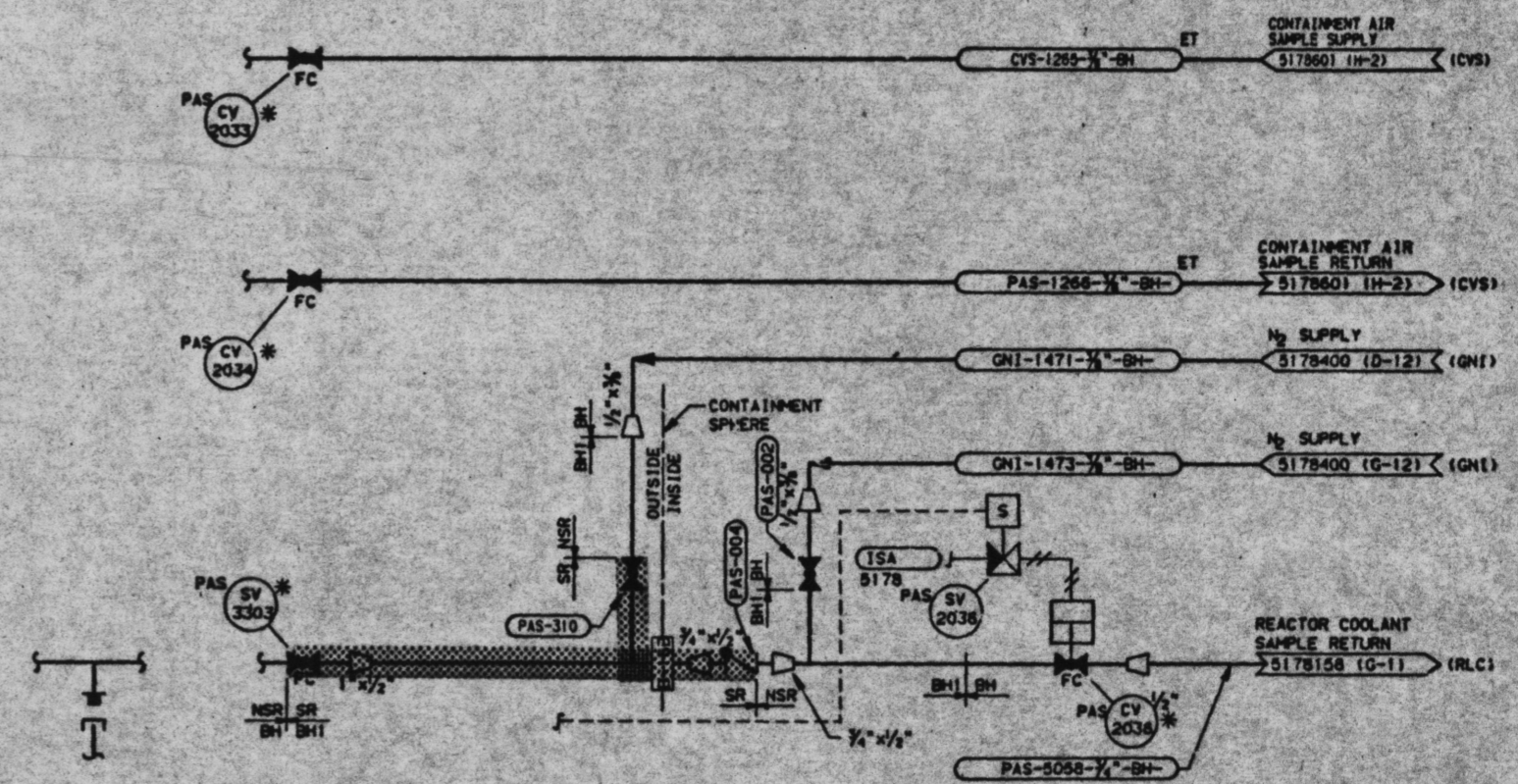


1 2 3 4 5 6 7 8 9 10 11 12

A
B
C
D
E
F
G
H



TI
APERTURE
CARD



CHECK GLH 8-21-85
BCM 5-12-84

- NOTES:
- INSULATING FLANGE IS DISABLED
 - THIS DRAWING SUPERSEDES DRAWING 5159560 AND ALL CHG'S WHICH PERTAIN TO IT

DRG. LIST IN...
REVISE ON CAD SYSTEM ONLY

NO.	DATE	P.E.	QAE	SUPV	APPROVED	ENGR	CK'D	MADE	J.G.	NO.
1										
0										

(SRAN) WP 92-297 PAS

LOCATION: SAN ONOFRE NUCLEAR GEN. STA., UNIT 1

P & I DIAGRAM
POST ACCIDENT SAMPLING
SYSTEM SHEET 1

SCALE: NONE

OF SHTS.

51-552-C-000 10-83

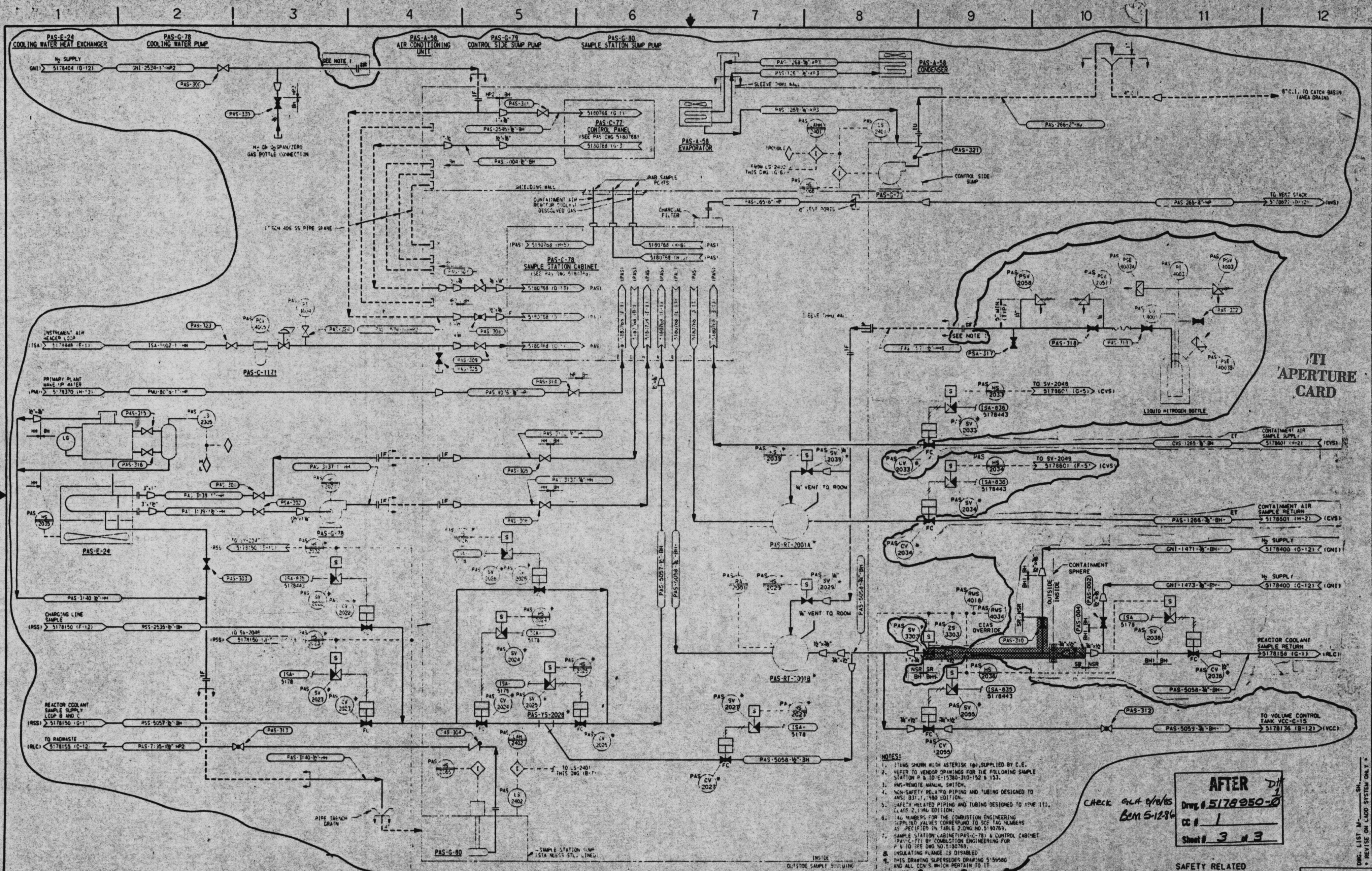
5159560

5178950-1

26X

MICROFILMED FROM
BEST AVAILABLE COPY

58



TI APERTURE CARD

- NOTES:
- ITEMS SHOWN WITH ASTERISK (*) SUPPLIED BY C.E.
 - REFER TO VENDOR DRAWINGS FOR THE FOLLOWING SAMPLE STATION # & I.D.#: 13380-310-132 & 133.
 - NON-SAFETY RELATED SWITCHES.
 - NON-SAFETY RELATED PIPING AND TUBING DESIGNED TO ANSI B31.1, 1980 EDITION.
 - SAFETY RELATED PIPING AND TUBING DESIGNED TO ASME 111, CLASS 2, 1980 EDITION.
 - TAG NUMBERS FOR THE COMBUSTION ENGINEERING SUPPLIER VALVES CORRESPOND TO SEE TAG NUMBERS AS PRELIMINARY TAGS, 2, 3, 4, 5, 6, 7, 8, 9, 10, 11, 12, 13, 14, 15, 16, 17, 18, 19, 20, 21, 22, 23, 24, 25, 26, 27, 28, 29, 30, 31, 32, 33, 34, 35, 36, 37, 38, 39, 40, 41, 42, 43, 44, 45, 46, 47, 48, 49, 50, 51, 52, 53, 54, 55, 56, 57, 58, 59, 60, 61, 62, 63, 64, 65, 66, 67, 68, 69, 70, 71, 72, 73, 74, 75, 76, 77, 78, 79, 80, 81, 82, 83, 84, 85, 86, 87, 88, 89, 90, 91, 92, 93, 94, 95, 96, 97, 98, 99, 100.
 - INSULATING PLANCE IS DISABLED.
 - THIS DRAWING SUPERSEDES DRAWING 5178950 AND ALL CEN'S WHICH PERTAIN TO IT.

AFTER *DM*
 Drawg # 5178950-0
 CC # 1
 Sheet # 3 of 3

*check GMA 4/18/85
 Beam 5-1286*

SAFETY RELATED AS NOTED (SRAN) WP 2.1.80

PAS
 SHEET NO.
M
 SCALE: NONE
 OF SHTS.

5178000	P & I DIAGRAM LEGEND SH 1														
5178001	P & I DIAGRAM LEGEND SH 2														
5178002	P & I DIAGRAM LEGEND SH 3														
	REFERENCE DRAWINGS														
	NO.	REVISED	DATE	P.E.	QAE	SUPV	APPROVED	ENGR	CD	MADE	J.O.				

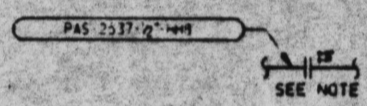
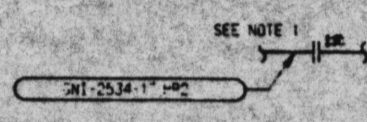
SEE EDISON
 Redwood California

26X

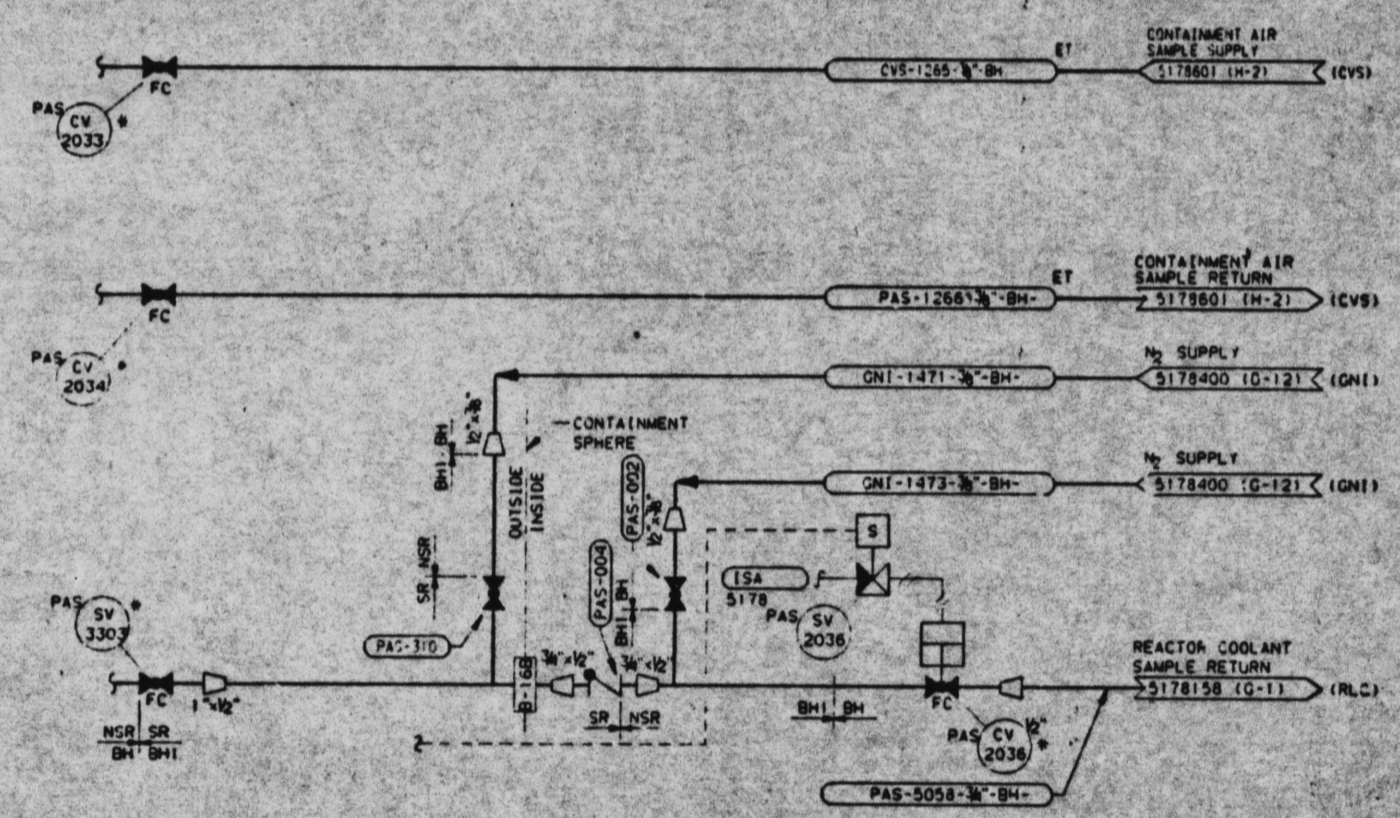
MICROFILMED FROM
 BEST AVAILABLE COPY

1 2 3 4 5 6 7 8 9 10 11 12

A
B
C
D
E
F
G
H



TY APERTURE CARD



BEFORE
 Dwg. # 5178950-B
 CC # 1
 Sheet # 2 of 3

- NOTES:**
1. INSULATING FLANGE IS DISABLED.
 2. THIS DRAWING SUPERSEDES DRAWING 5159580 AND ALL CCH'S WHICH PERTAIN TO IT.

CHECK CLN & re/ob
 BCM 5-12-86

SAFETY RELATED
 AS NOTED
 (SRAN)

PAS
 SHEET NO.
 M
 SCALE: NONE
 OF SHEETS

NO.	REVISIONS	DATE	P.E.	OAE	SUPV	APPROVED	ENGR	CK'D	MADE	J.O.	NO.

EDISON
 Redwood California

**MICROFILMED FROM
 BEST AVAILABLE COPY**

26X

CONFIGURATION CHANGE

SHEET	EDM USE ONLY
1	CC No.
DATE	

REQUESTED BY D. HADLEY	<input type="checkbox"/> SPECIFICATION <input checked="" type="checkbox"/> DRAWING <input type="checkbox"/> PROCEDURE <input type="checkbox"/> INSTRUCTION	NUMBER 5178950	REVISION B	CLASS ER
TITLE PEI DIAGRAM POST ACCIDENT SAMPLING SYSTEM SHEET 1		SUPPLIER <input type="checkbox"/> BECTEL <input checked="" type="checkbox"/> EDISON		
DESCRIPTION OF CHANGE PARTIAL 1. INCORPORATED CC'S #8, 9, 11, 13, 15 & 16 CC'S #10, 12 & 14 TO DRAWING 5159580		J.O. NO. 7764	W.G. NO.	
REF. INFO: CC'S #1, 2, 3, 4, 5, 6 & 7 CANCELED BY CC#8 CC'S #10, 12 & 14 CANCELED WP 2.1.8a				
JUSTIFICATION DRAWING #5159580 WAS REDRAWN ON THIS DRAWING PER WP 82-063				
EVALUATION				
OTHER AFFECTED DOCUMENTS / DRAWINGS: 5159580				
DOCUMENT CHANGE REQUIRED FOR: <input checked="" type="checkbox"/> CONSTRUCTION <input type="checkbox"/> AS BUILT <input type="checkbox"/> OTHER				
FIELD APPROVALS		DESIGN APPROVALS		
ENGR. / DISCIPLINE	DATE	CONSTR. SUPER.	DATE	RESPONSIBLE ENGR. D. Hadley
ENGR. / DISCIPLINE	DATE	G.A. REF.	DATE	INDEPENDENT REVIEW ENGR. W. M. Stone
ENGR. / DISCIPLINE	DATE	STATION SUPT. POWER SUPPLY (RECORD REV.)	DATE	ARCHITECTURAL 12/1/84
				CIVIL-STRUCTURAL 12/1/84
				CONTROLS 12/1/84
				ELECTRICAL 12/1/84
				CONSTRUCTION 12/1/84
				QUALITY ASSURANCE 12/1/84
				PROJECT ENGINEER 12/1/84
				CHECKER (AS APPROPRIATE) 12/1/84

ITI
APERTURE
CARD

16X

MICROFILMED FROM
BEST AVAILABLE COPY

CHECK FILE 8/10/85
BOM 5-12-86