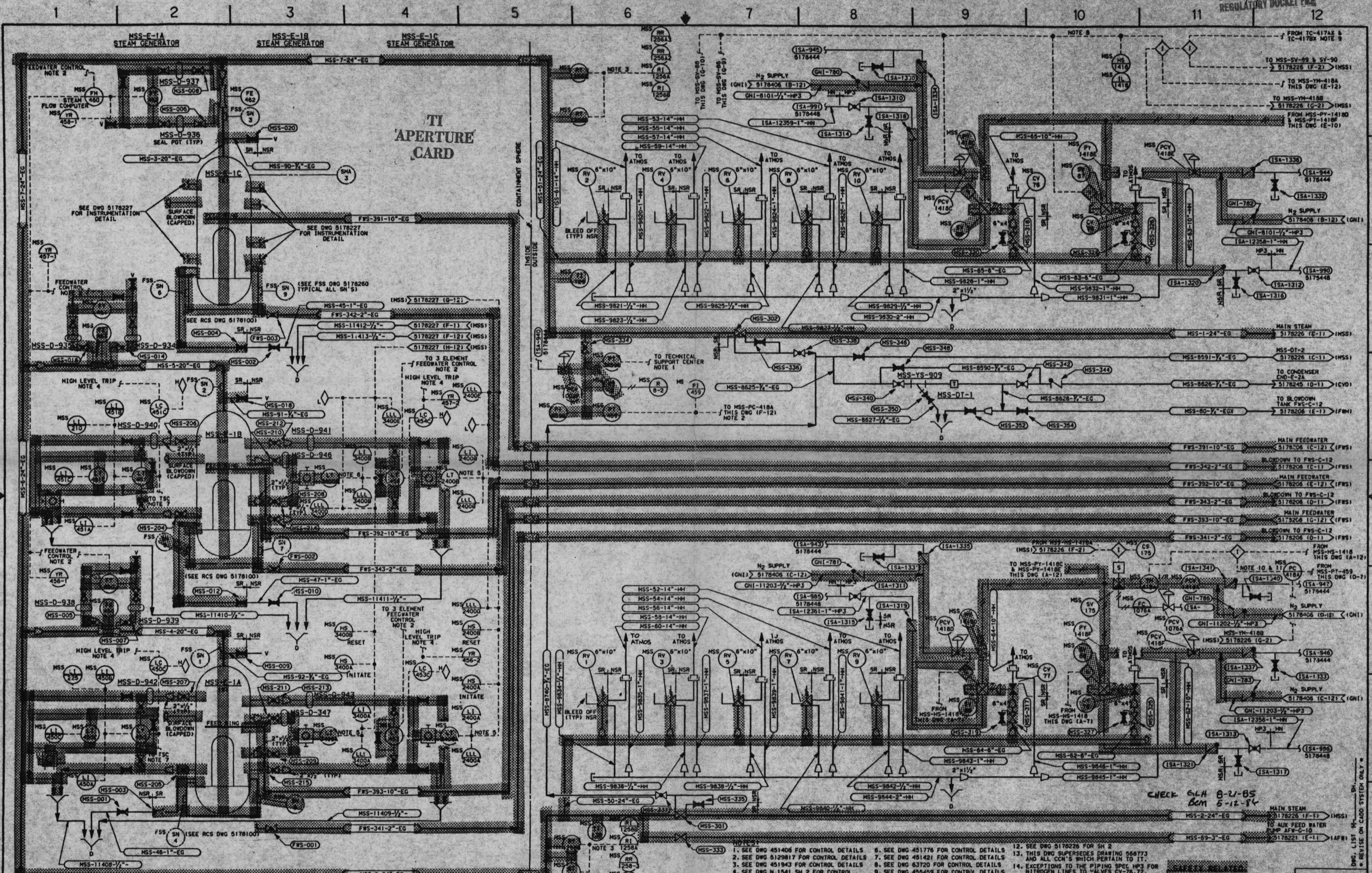


50-206  
 Control # 866090190  
 Date 4/5/86  
 REGULATORY DOCKET FILE



REFERENCE DRAWING	NO.	REVISIONS	N	DATE	P.E.	GAE	SUPV	APPROVED	ENGR	CK'D	MADE	J.O.	NO.	REVISIONS	N	DATE	P.E.	GAE	SUPV	APPROVED	ENGR	CK'D	MADE	J.O.	NO.	
5178000	P & I DIAGRAM LEGEND SH 1																									
5178001	P & I DIAGRAM LEGEND SH 2																									
5178002	P & I DIAGRAM LEGEND SH 3																									
451671	LOOP DIAG-PASS AREA-RAD MONITORING SYS																									
451657	LOOP DIAG-PASS AUXILIARY SYSTEM																									
451942	LOOP DIAG-STACK EFFLUENT MONITORING SYS																									

5178000 P & I DIAGRAM LEGEND SH 1  
 5178001 P & I DIAGRAM LEGEND SH 2  
 5178002 P & I DIAGRAM LEGEND SH 3  
 451671 LOOP DIAG-PASS AREA-RAD MONITORING SYS  
 451657 LOOP DIAG-PASS AUXILIARY SYSTEM  
 451942 LOOP DIAG-STACK EFFLUENT MONITORING SYS

3 AS BUILT-INCORP DCN #8 & #9, DCN #7 UNMOVED  
 2 AS BUILT-INCORP CC #1 & SH 3 OF DCN  
 \*4, DCN'S #7 & #6  
 1 AS BUILT-INCORP DCN #3-CC #2 CANCELED  
 0 ISSUED AS BUILT

6. SEE DWG 451776 FOR CONTROL DETAILS  
 7. SEE DWG 451421 FOR CONTROL DETAILS  
 8. SEE DWG 63720 FOR CONTROL DETAILS  
 9. SEE DWG 455409 FOR CONTROL DETAILS  
 10. SEE DWG 455116 FOR CONTROL DETAILS  
 11. SEE DWG 63714 FOR CONTROL DETAILS

12. SEE DWG 5178226 FOR SH 2  
 13. THIS DWG SUPERSEDES DRAWING 566773 AND ALL CCH'S WHICH PERTAIN TO IT.  
 14. EXCEPTIONS TO THE PIPING SPEC #23 FOR NITROGEN LINES TO VALVES CV-71, 72 & 79 ARE SHOWN ON LAYOUT DWG 453520  
 15. SEE DWG 5178227 FOR SH 3

LOCATION: SAN ONOFRE NUCLEAR GEN. STA. UNIT 1  
 SHEET NO. M  
 SCALE: NONE  
 S.E. EDISON  
 Rosemead, California

5178225-3

