

BARNSTABLE COUNTY COMMISSIONERS

P.O. BOX 427
BARNSTABLE, MASSACHUSETTS
02630
(508) 375-6648
FAX (508) 362-4136

COUNTY COMMISSIONERS
WILLIAM DOHERTY
Harwich

MARY PAT FLYNN
Falmouth

SHEILA R. LYONS
Wellfleet

HOME RULED CHARTERED
IN 1989

A PETITION OF THE BOARD OF REGIONAL COMMISSIONERS OF BARNSTABLE COUNTY, MASSACHUSETTS REGARDING POTENTIAL THREATS TO CAPE COD ASSOCIATED WITH THE PILGRIM NUCLEAR POWER STATION

WHEREAS, the Massachusetts Emergency Management Agency (MEMA) acknowledges that Cape Cod (Barnstable County) is not immediately included within the 10 mile Emergency Planning Zone (EPZ) in the event of a radiological accident at the Pilgrim Nuclear Power Station (Pilgrim) in Plymouth, Massachusetts; and

WHEREAS, MEMA correspondingly acknowledges that Cape Cod is within the shadow evacuation area based upon its location within a 50 mile radioactive materials Ingestion Planning Zone (IPZ) and that Cape residents and visitors may not be immediately evacuated after exposure to dangerous radioactive materials released in an accident; and

WHEREAS, all fifteen towns within Barnstable County have asked Massachusetts Governor Deval Patrick to request the closure of Pilgrim by the U.S. Nuclear Regulatory Commission (NRC) if public safety cannot be ensured; and

WHEREAS, Governor Deval Patrick has transmitted a letter to the Chair of the U.S. NRC requiring "the nuclear power plant be decommissioned should Pilgrim not comply with all health, safety, and environmental regulations"; and

WHEREAS, the U.S. Nuclear Regulatory Commission (NRC) delayed a requirement to have nuclear power plants install systems to filter radiation from vents used to release high-pressure hydrogen gas in the event of an accident; and

WHEREAS, U.S. Senator Edward Markey has acknowledged that, "The NRC has abdicated its responsibility to ensure public health and safety in New England and across the Country"; and

WHEREAS, MEMA has recommended that the two bridges crossing the Cape Cod Canal may be closed to Cape traffic during an emergency evacuation of the adjacent 10 mile emergency planning zone (EPZ) within Plymouth County; and

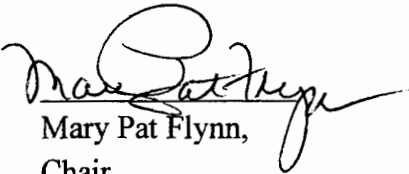
WHEREAS, the Board of Regional Commissioners of Barnstable County have determined that there is a corporate and state responsibility to ensure safety of the public in the event of a radiological accident at Pilgrim; and

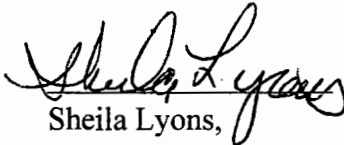
WHEREAS, Pilgrim's corporate ownership, ENTERGY, and MEMA are examining and assessing the criticality of evacuating residents off the Cape during an emergency event; and

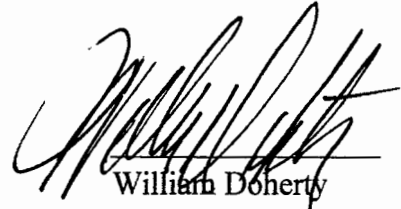
THEREFORE, the Board of Regional Commissioners of Barnstable County Petitions:

- the Commonwealth of Massachusetts to prepare an effective evacuation mobility plan for the Cape Cod region, in collaboration with the Barnstable County Regional Emergency Planning Committee, that will ensure the public safety of residents
- the U.S. Nuclear Regulatory Commission to decommission Pilgrim station if public safety cannot be ensured during a radiological event

This Petition was adopted by the Board of Regional Commissioners of Barnstable County on April 16, 2014.


Mary Pat Flynn,
Chair

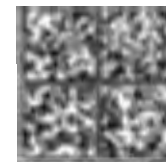

Sheila Lyons,
Vice-Chair


William Doherty
Commissioner

BARNSTABLE COUNTY COMMISSIONERS

P.O. BOX 427
SUPERIOR COURT HOUSE
BARNSTABLE, MASSACHUSETTS 02630

100055502



UNITED STATES POSTAGE
FITNEY BOWES
02 1M \$ 00.48⁰
0008005362 APR 22 2014
MAILED FROM ZIP CODE 02630

Chairman Allison M. Macfarlane
U.S. Nuclear Regulatory Commission
Mail Stop O-16G4
Washington, DC 20555-0001

20555\$0001

