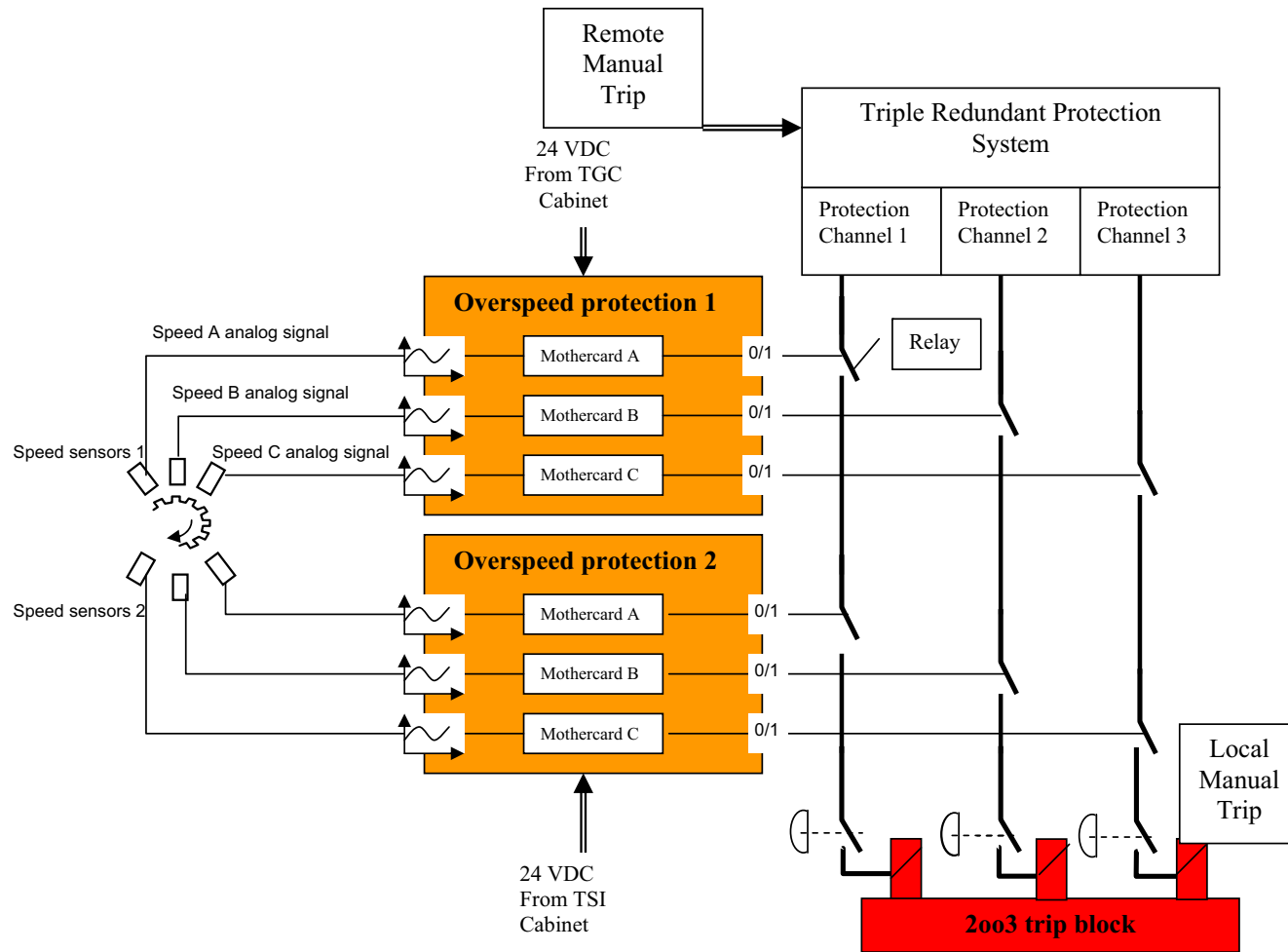


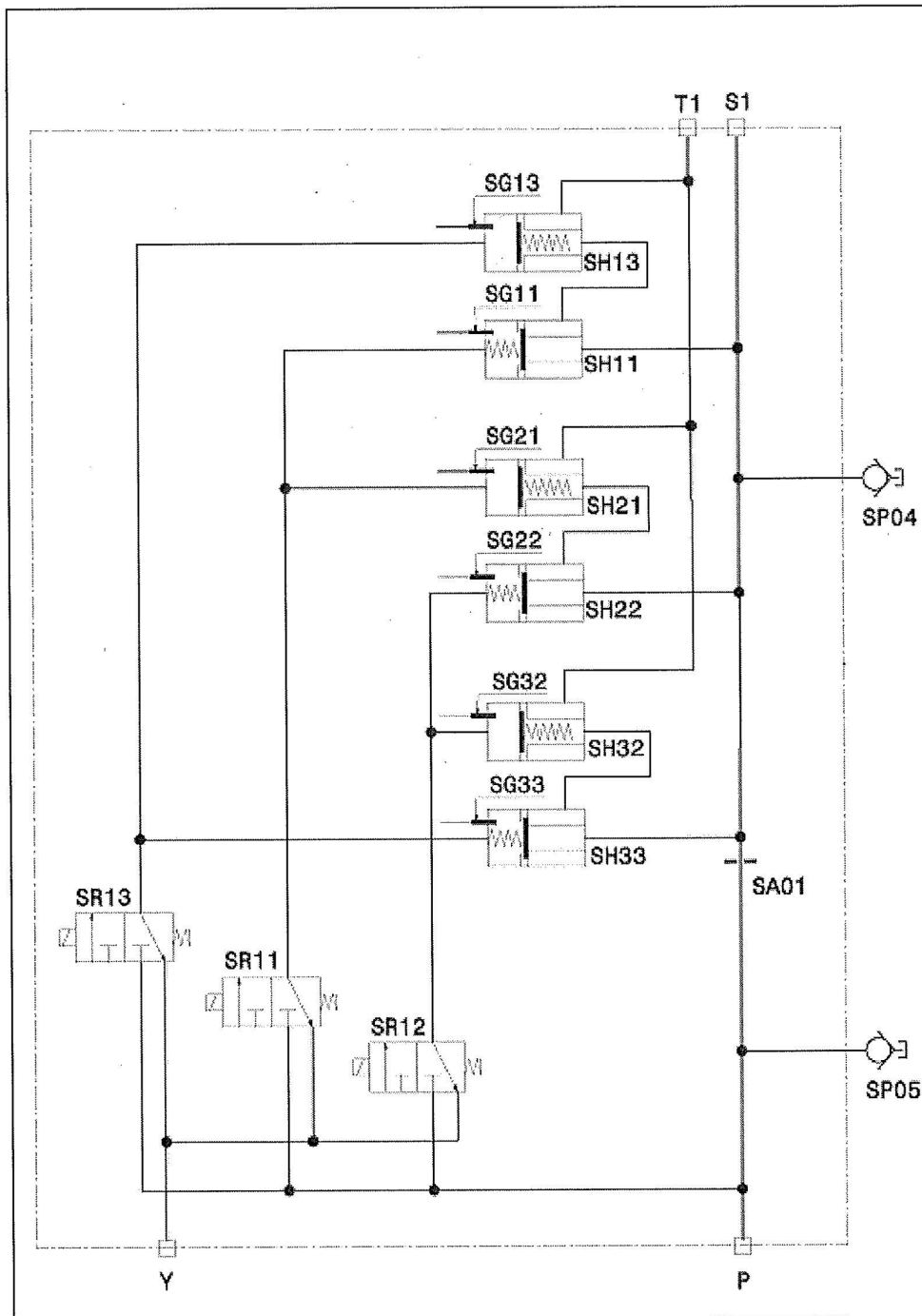
Figure 10.2-2—Overspeed Protection System Schematic



Shown in the Tripped Condition

REV 004  
EPR8000 T2

Figure 10.2-3—Turbine Trip Block Schematic

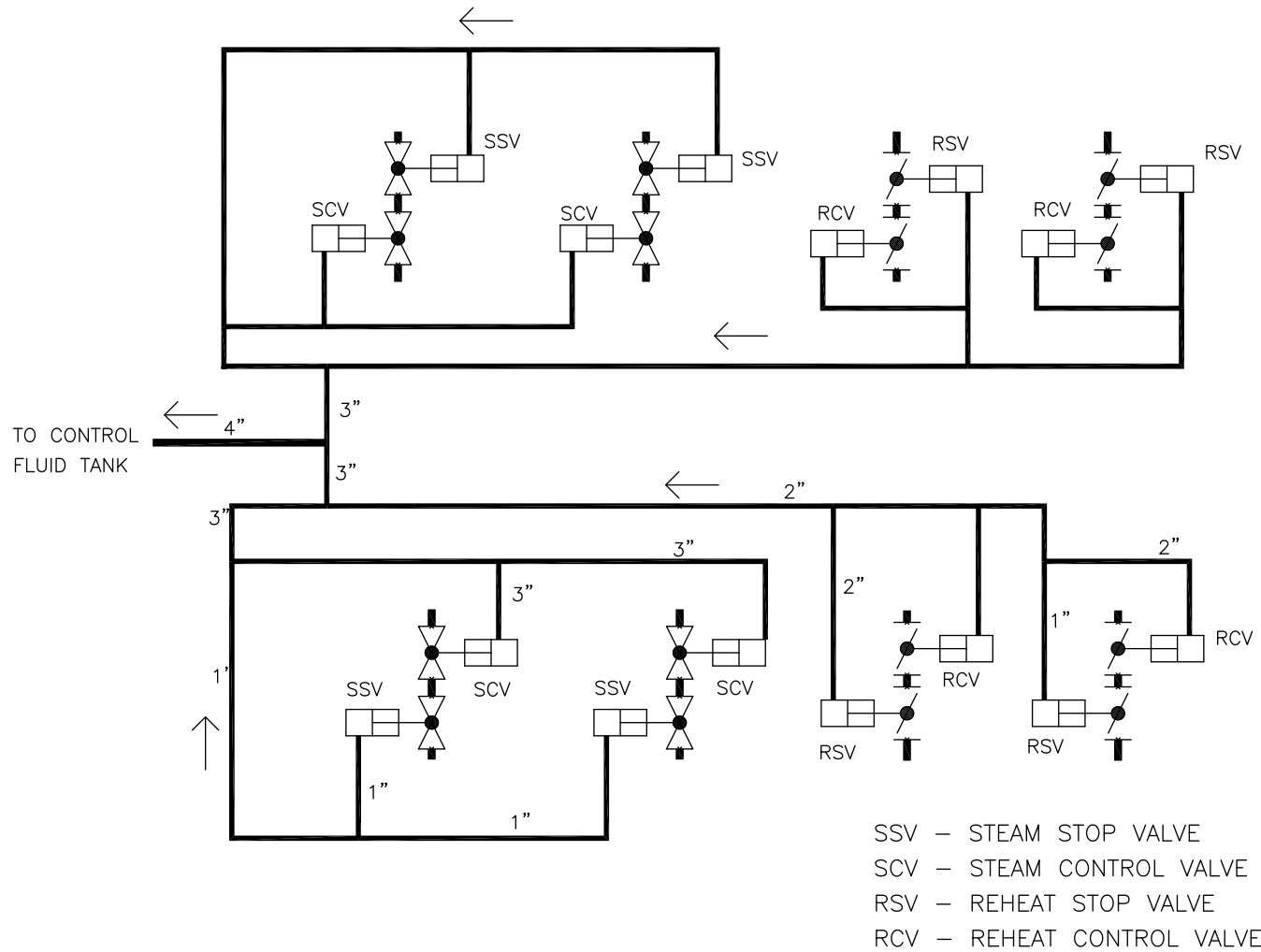


Solenoid valves are shown in the tripped condition. Plate valves are shown in the normal operating position.

- Y = Fluid Drain to the control fluid tank from the solenoid valves.
- P = Fluid to the trip block from the control fluid pump discharge header.
- T1 = Fluid drain to the control fluid tank from the plate valves.
- S1 = Fluid to the main steam and reheat valve actuators.

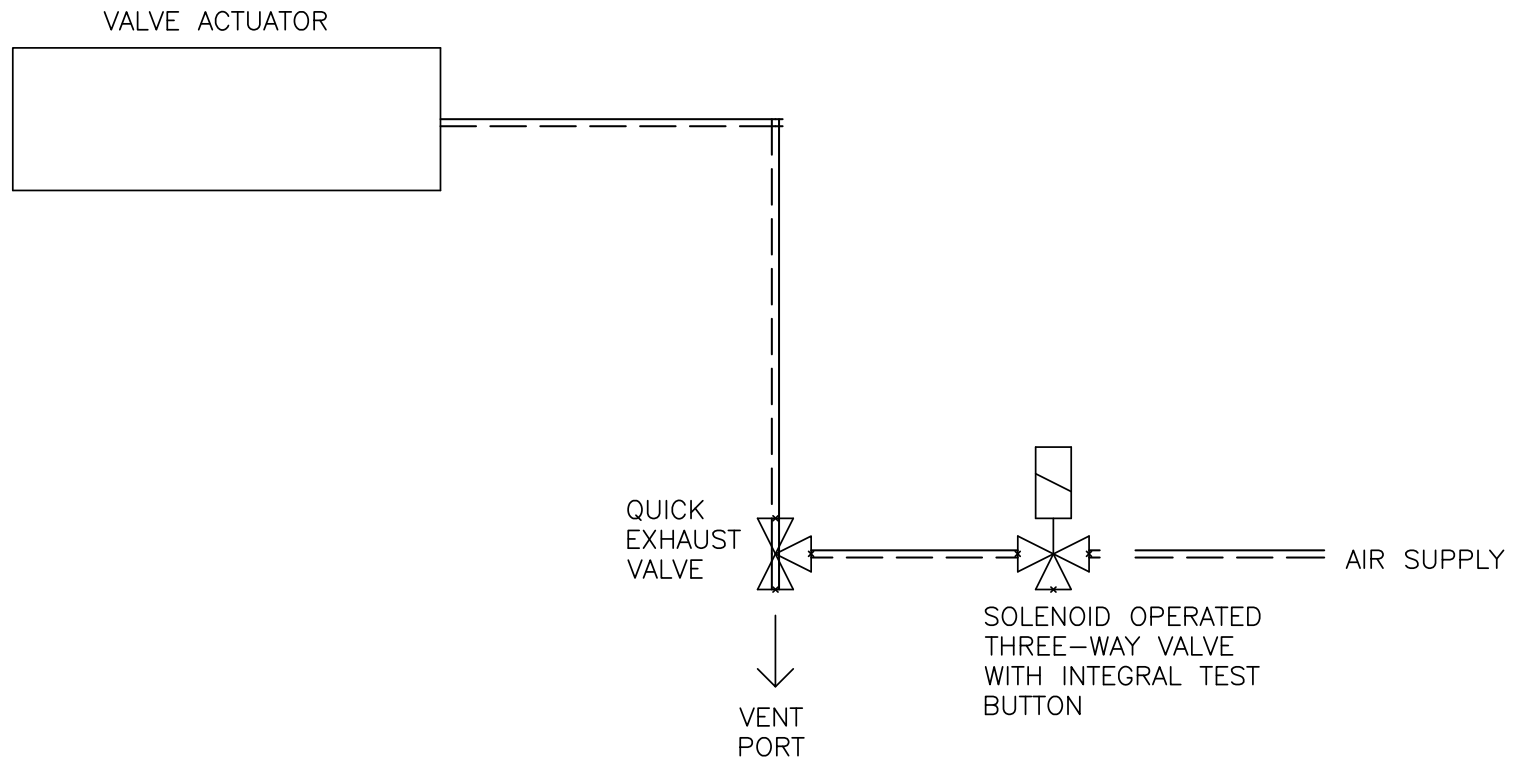
REV 004  
EPR8005 T2

Figure 10.2-4—Control Fluid Drain Headers



EPR8001 T2

Figure 10.2-5—Non-Return Valve Air Schematic



EPR8002 T2

[Next File](#)