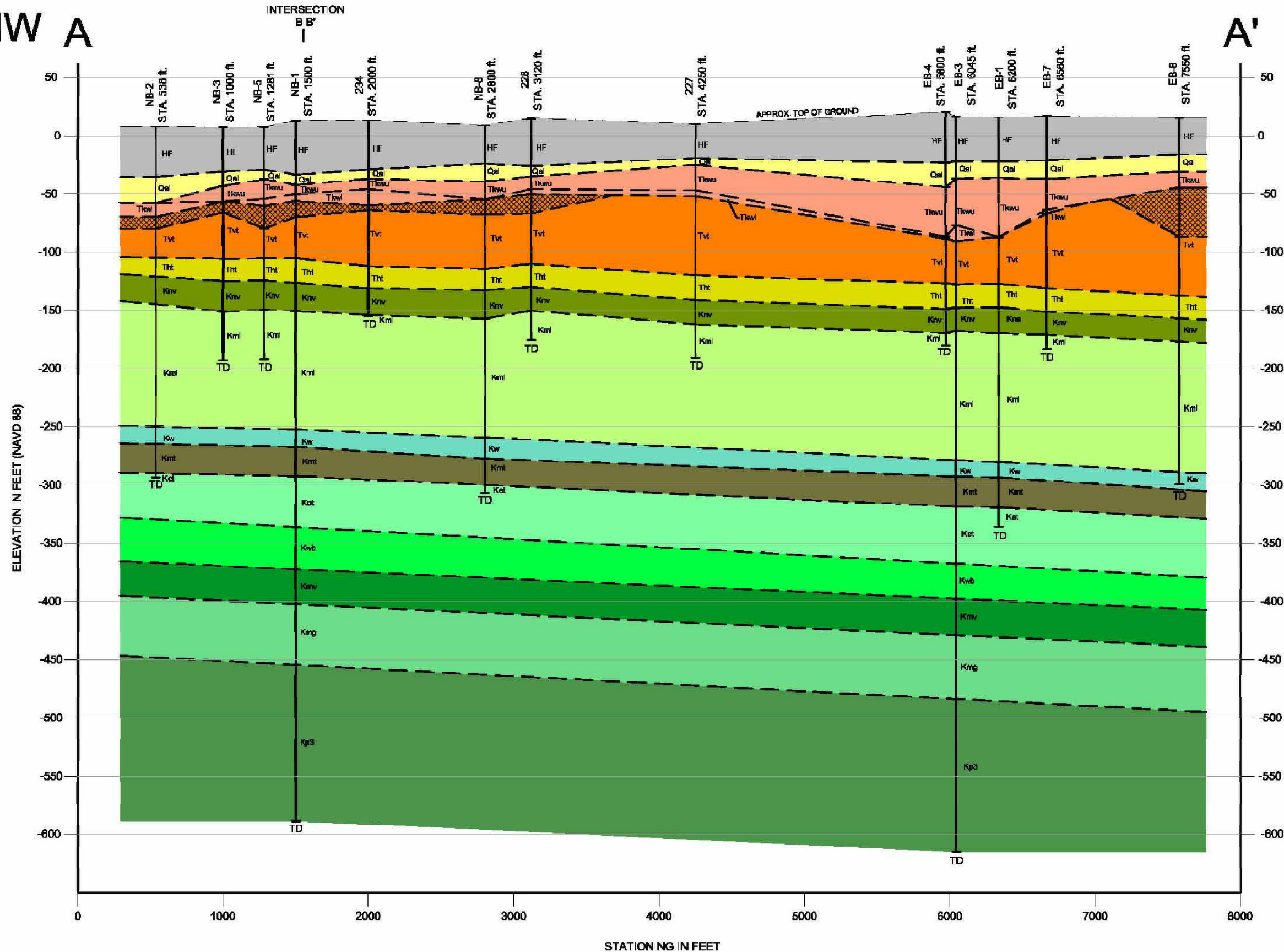


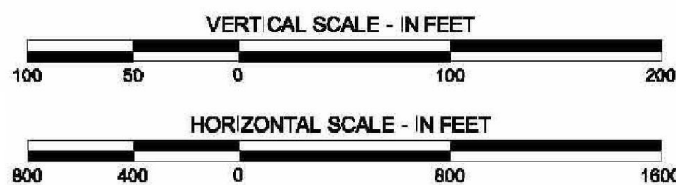
NW A

A' SE



**LEGEND:**

- HF - Artificial and Hydraulic Fill
- Qal - Alluvium
- Tkwu - Kirkwood Formation (Upper)
- Tkw - Kirkwood Formation (Lower)
- Tvt (cross-hatched) - Vincentown Formation (Oxidized)
- Tvt - Vincentown Formation
- Tht - Homerstown Formation
- Krv - Navesink Formation
- Kmi - Mount Laurel Formation
- Kw - Wenonah Formation
- Kmt - Marshalltown Formation
- Ket - Englishtown Formation
- Kwb - Woodbury Formation
- Kmv - Merchantville Formation
- Kmg - Magothy Formation
- Kp3 - Potomac Formation



**NOTES:**

- BORINGS 227, 228, AND 234 (Reference 2.6.2)
- EB AND NB SERIES BORINGS COMPLETED FOR ESPA (Reference 2.6.8)
- TD = TERMINATION DEPTH
- SEE FIGURE 2.6-8 FOR SECTION LOCATION.
- BORINGS PROJECTED ORTHOGONALLY TO SECTION LINE.
- SOME BORINGS SHOWN ON FIG 2.6-8 NOT INCLUDED DUE TO SHALLOW DEPTH OR PROXIMITY TO OTHER BORINGS.

PSEG Power, LLC  
 PSEG Site ESPA  
 Part 2, Site Safety Analysis Report  
 Cross Section A-A'  
 Orientation  
 FIGURE 2.4.12-5  
 Rev 0