





## Legionella (Legionnaires' Disease and Pontiac Fever)

### Legionella home page

[About the Disease](#)[Fast Facts](#)[For Clinicians](#)[For Media](#)[Outbreaks](#)[For Health Departments](#)[Environmental Specimen Collection & Management](#)[Diagnostic Testing](#)[ELITE Program for Labs](#)[Publications](#)[f Recommend](#) 2[T](#) Tweet[+](#) Share[Email page link](#)[Print page](#)

### Contact Us:

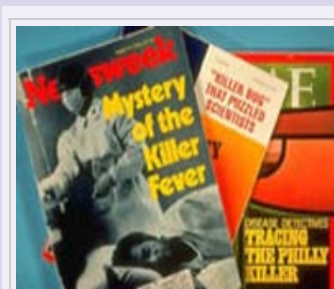
 Centers for Disease Control and Prevention  
1600 Clifton Rd  
Atlanta, GA 30333

 800-CDC-INFO  
(800-232-4636)  
TTY: (888) 232-6348

New Hours of Operation  
8am-8pm  
ET/Monday-Friday  
Closed Holidays

 [cdcinfo@cdc.gov](mailto:cdcinfo@cdc.gov)

Legionnaires' disease (LEE-juh-nares) is caused by a type of bacterium called *Legionella* (LEE-juh-nell-a). The bacterium is named after a 1976 outbreak, when many people who went to a Philadelphia convention of the American Legion suffered from this disease, a type of pneumonia (lung infection). A milder infection, also caused by *Legionella* bacteria, is called Pontiac fever. The term "legionellosis" (LEE-juh-nuh-low-sis) may be used to refer to either Legionnaires' disease or Pontiac fever.



The pictured magazine covers feature the work of public health professionals in 1976 as they raced to trace the origin of the first documented outbreak of Legionnaires' disease in Philadelphia, Pennsylvania.

### Related Links

[ELITE program application](#)[CDC Legionella Healthy Swimming web site](#)[CDC Vessel Sanitation Program](#)[Unexplained Respiratory Disease Outbreaks \(URDO\)](#)[European Legionnaires' Disease Surveillance Network \(ELDSNet\) !\[\]\(564cd820867798afb0e971f95b7a11a1\_img.jpg\)](#)

### For Clinicians



Top 10 things every

### For Health Departments

- Identify and report travel-associated Legionnaires' disease
- Epidemiologic investigation tools

[more >>](#)

clinician needs to know about legionellosis including diagnosing, testing, obtaining a specimen for culture, treating, and reporting cases.

[more »](#)

## Environmental Specimen Collection & Management



### Recovery of *Legionella* Manual

- Sampling protocol
- Procedures for collecting and processing
- Potential sampling sites



Email



Print

Page last reviewed: February 5, 2013

Page last updated: February 5, 2013

Content source: National Center for Immunization and Respiratory Diseases, Division of Bacterial Diseases

## ELITE Program

The



Environmental Legionella Isolation Techniques Evaluation (ELITE) Program was created as a way for laboratories to test their *Legionella* isolation techniques against standardized samples.

[more »](#)