

F1-101

Sheet 1 of 84

Status: Y  N  U

**Seismic Walkdown Checklist (SWC)**

Equipment ID No. Q1R43T503 Equip. Class<sup>1</sup> 21

Equipment Description DIESEL GENERATOR 1B STARTING AIR RECIEVER TANK

Location: Bldg. DIESEL Floor El. 155 Room, Area 0058

Manufacturer, Model, Etc. (optional but recommended) \_\_\_\_\_

**Instructions for Completing Checklist**

This checklist may be used to document the results of the Seismic Walkdown of an item of equipment on the SWEL. The space below each of the following questions may be used to record the results of judgments and findings. Additional space is provided at the end of this checklist for documenting other comments.

**Anchorage**

1. Is the anchorage configuration verification required (i.e., is the item one of the 50% of SWEL items requiring such verification)? Y  N

*Reference SEWS package dated 4/12/94.*

2. Is the anchorage free of bent, broken, missing or loose hardware? Y  N  U  N/A

3. Is the anchorage free of corrosion that is more than mild surface oxidation? Y  N  U  N/A

4. Is the anchorage free of visible cracks in the concrete near the anchors? Y  N  U  N/A

5. Is the anchorage configuration consistent with plant documentation? Y  N  U  N/A   
 (Note: This question only applies if the item is one of the 50% for which an anchorage configuration verification is required.)

6. Based on the above anchorage evaluations, is the anchorage free of potentially adverse seismic conditions? Y  N  U

<sup>1</sup> Enter the equipment class name from Appendix B: Classes of Equipment.

F1-101

Sheet 2 of 84

Status: Y  N  U

**Seismic Walkdown Checklist (SWC)**

Equipment ID No. Q1R43T503 Equip. Class<sup>1</sup> 21

Equipment Description DIESEL GENERATOR 1B STARTING AIR RECIEVER TANK

**Interaction Effects**

- 7. Are soft targets free from impact by nearby equipment or structures? Y  N  U  N/A   
*Small gap was noted between tank and cantilevered unistrut. This was previously noted in A-46 walkdowns and determined to be acceptable.*
  
- 8. Are overhead equipment, distribution systems, ceiling tiles and lighting, and masonry block walls not likely to collapse onto the equipment? Y  N  U  N/A
  
- 9. Do attached lines have adequate flexibility to avoid damage? Y  N  U  N/A
  
- 10. Based on the above seismic interaction evaluations, is equipment free of potentially adverse seismic interaction effects? Y  N  U

**Other Adverse Conditions**

- 11. Have you looked for and found no other seismic conditions that could adversely affect the safety functions of the equipment? Y  N  U

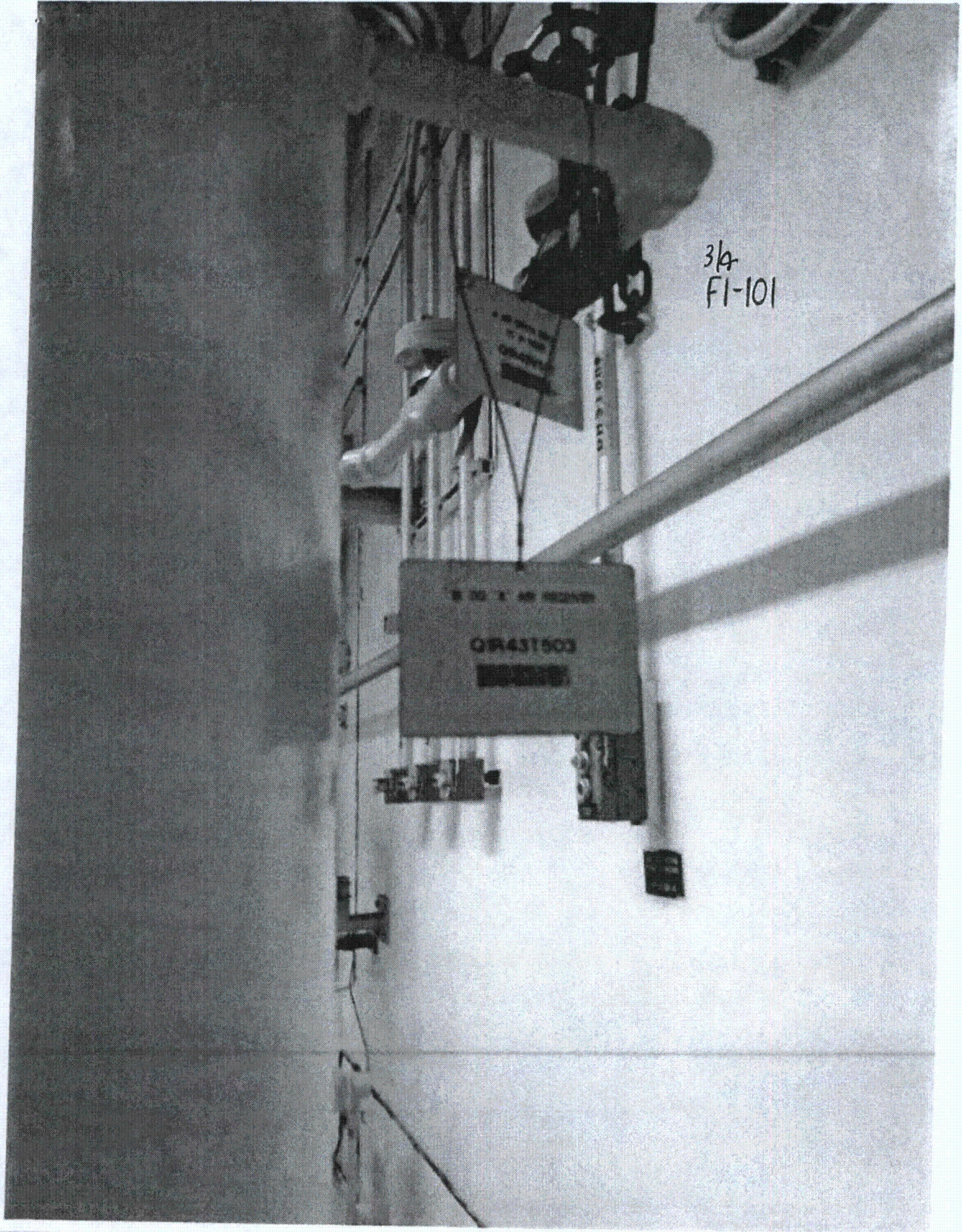
**Comments** (Additional pages may be added as necessary)

Area walkby for room 5B is with equipment Q1H21E527.

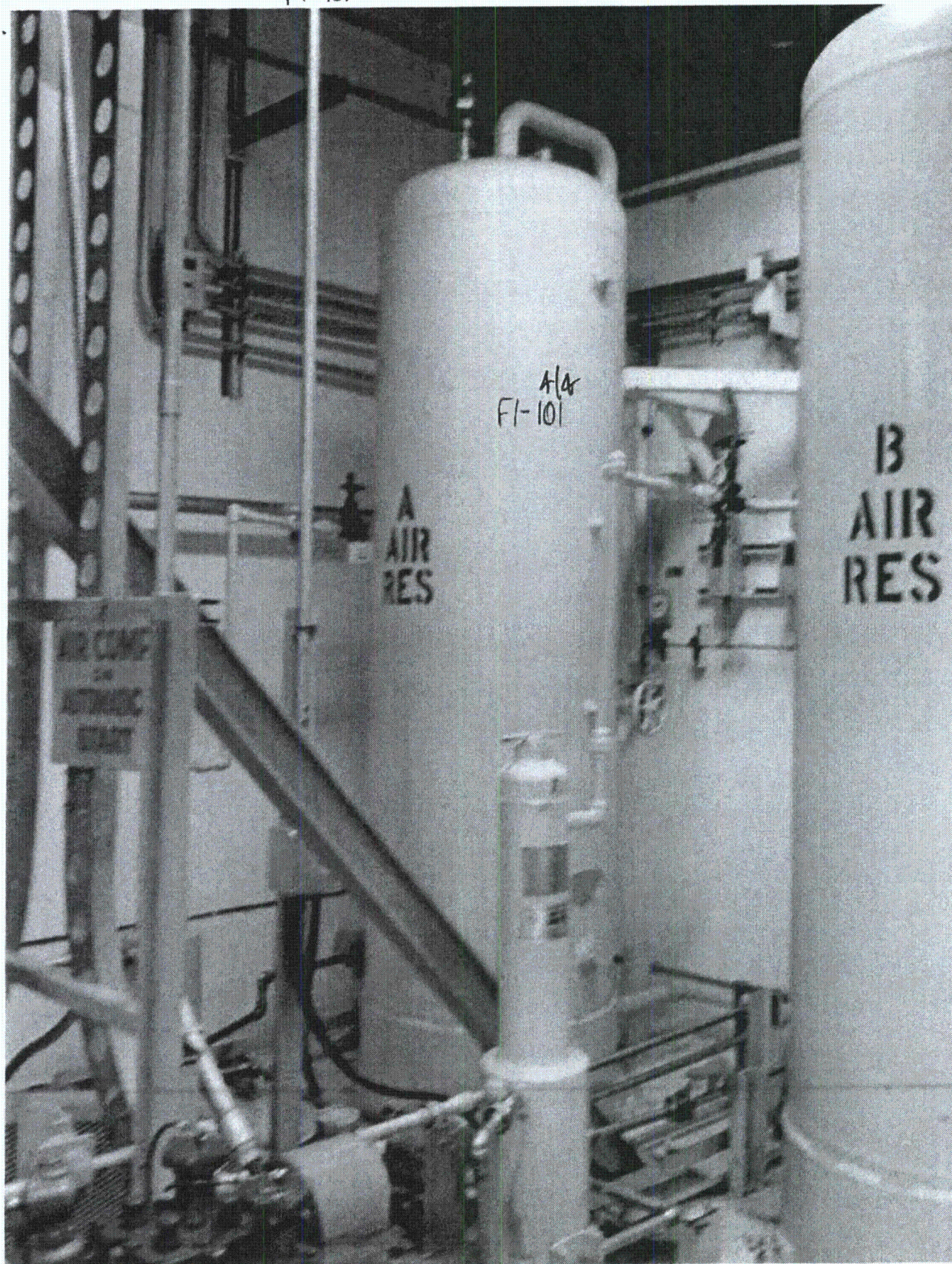
F1-46

Evaluated by: Laura Maclay *Laura Maclay* Date: 8-24-12  
Terry Alan Mullenix *Terry Alan Mullenix* 8-24-12

F1-101



F1-101



Fl-102

Sheet 1 of 5

Status: Y  N  U

**Seismic Walkdown Checklist (SWC)**

Equipment ID No. Q1V47C012B Equip. Class<sup>1</sup> 9

Equipment Description AUXILIARY BLDG B TRAIN BATTERY ROOM EXHAUST FAN

Location: Bldg. AUXILIARY Floor El. 175 Room, Area 0501

Manufacturer, Model, Etc. (optional but recommended) \_\_\_\_\_

**Instructions for Completing Checklist**

This checklist may be used to document the results of the Seismic Walkdown of an item of equipment on the SWEL. The space below each of the following questions may be used to record the results of judgments and findings. Additional space is provided at the end of this checklist for documenting other comments.

**Anchorage**

1. Is the anchorage configuration verification required (i.e., is the item one of the 50% of SWEL items requiring such verification)? Y  N
  
2. Is the anchorage free of bent, broken, missing or loose hardware? Y  N  U  N/A
  
3. Is the anchorage free of corrosion that is more than mild surface oxidation? Y  N  U  N/A
  
4. Is the anchorage free of visible cracks in the concrete near the anchors? Y  N  U  N/A
  
5. Is the anchorage configuration consistent with plant documentation? (Note: This question only applies if the item is one of the 50% for which an anchorage configuration verification is required.) Y  N  U  N/A
  
6. Based on the above anchorage evaluations, is the anchorage free of potentially adverse seismic conditions? Y  N  U

<sup>1</sup> Enter the equipment class name from Appendix B: Classes of Equipment.

F1-102

Sheet 2 of 25

Status: Y  N  U

**Seismic Walkdown Checklist (SWC)**

Equipment ID No. Q1V47C012B Equip. Class<sup>1</sup> 9

Equipment Description AUXILIARY BLDG B TRAIN BATTERY ROOM EXHAUST FAN

**Interaction Effects**

7. Are soft targets free from impact by nearby equipment or structures? Y  N  U  N/A

8. Are overhead equipment, distribution systems, ceiling tiles and lighting, and masonry block walls not likely to collapse onto the equipment? Y  N  U  N/A

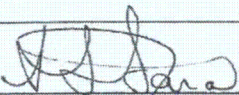
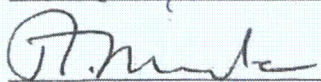
9. Do attached lines have adequate flexibility to avoid damage? Y  N  U  N/A

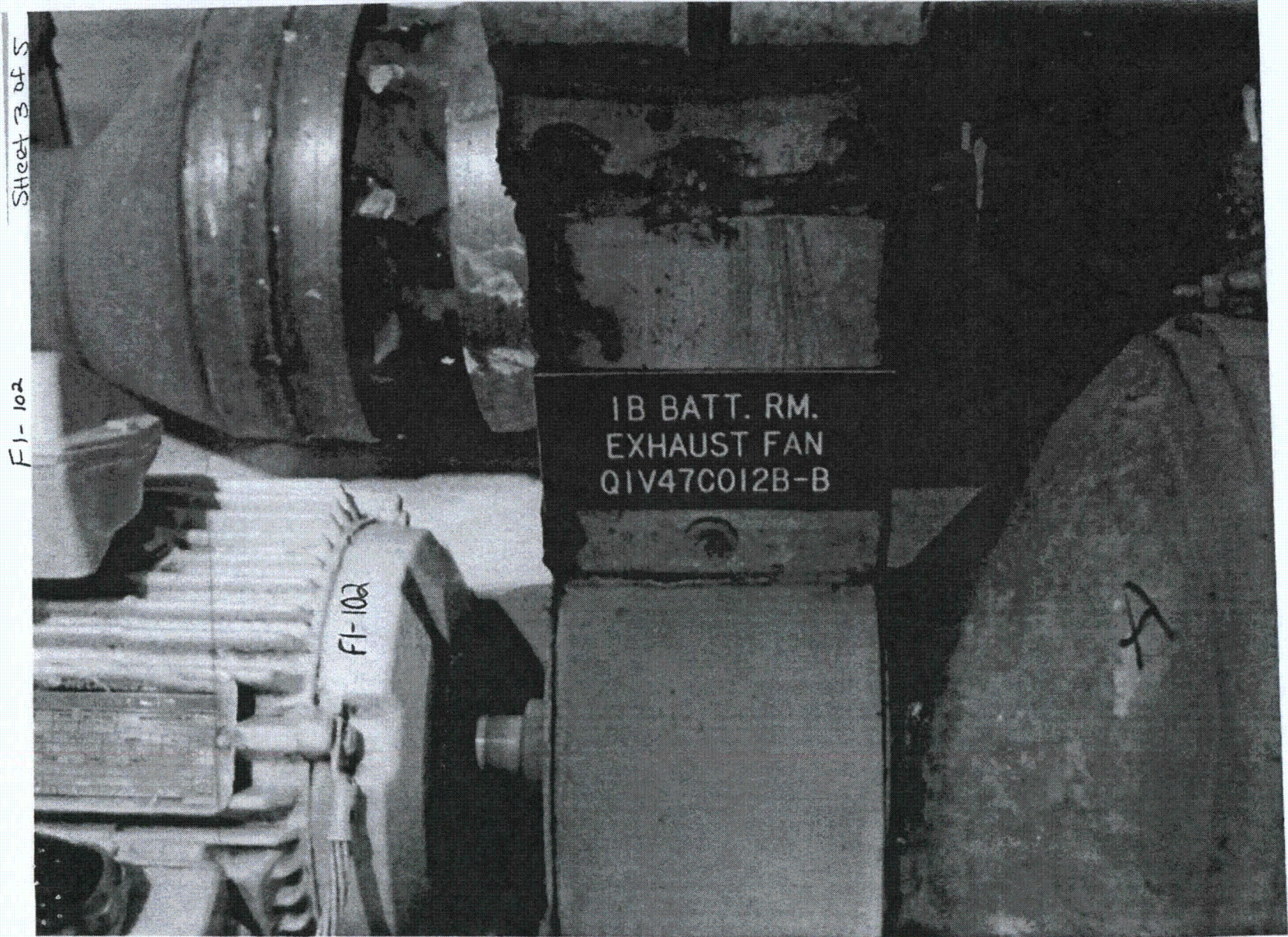
10. Based on the above seismic interaction evaluations, is equipment free of potentially adverse seismic interaction effects? Y  N  U

**Other Adverse Conditions**

11. Have you looked for and found no other seismic conditions that could adversely affect the safety functions of the equipment? Y  N  U

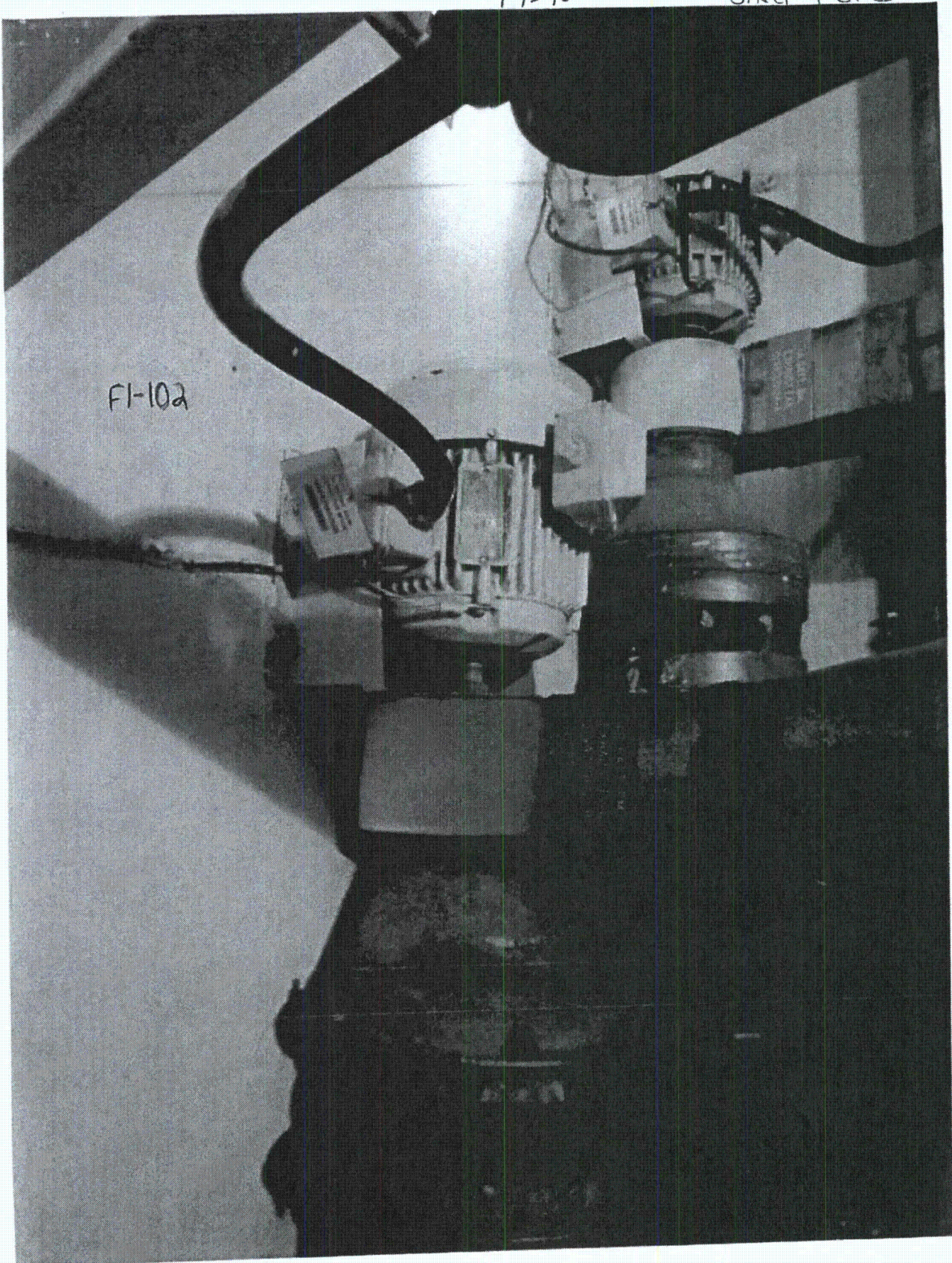
**Comments** (Additional pages may be added as necessary) None.

Evaluated by:  Maggie Farah Date: 8/22/12  
 Ron Miranda 8/22/12



F1-102

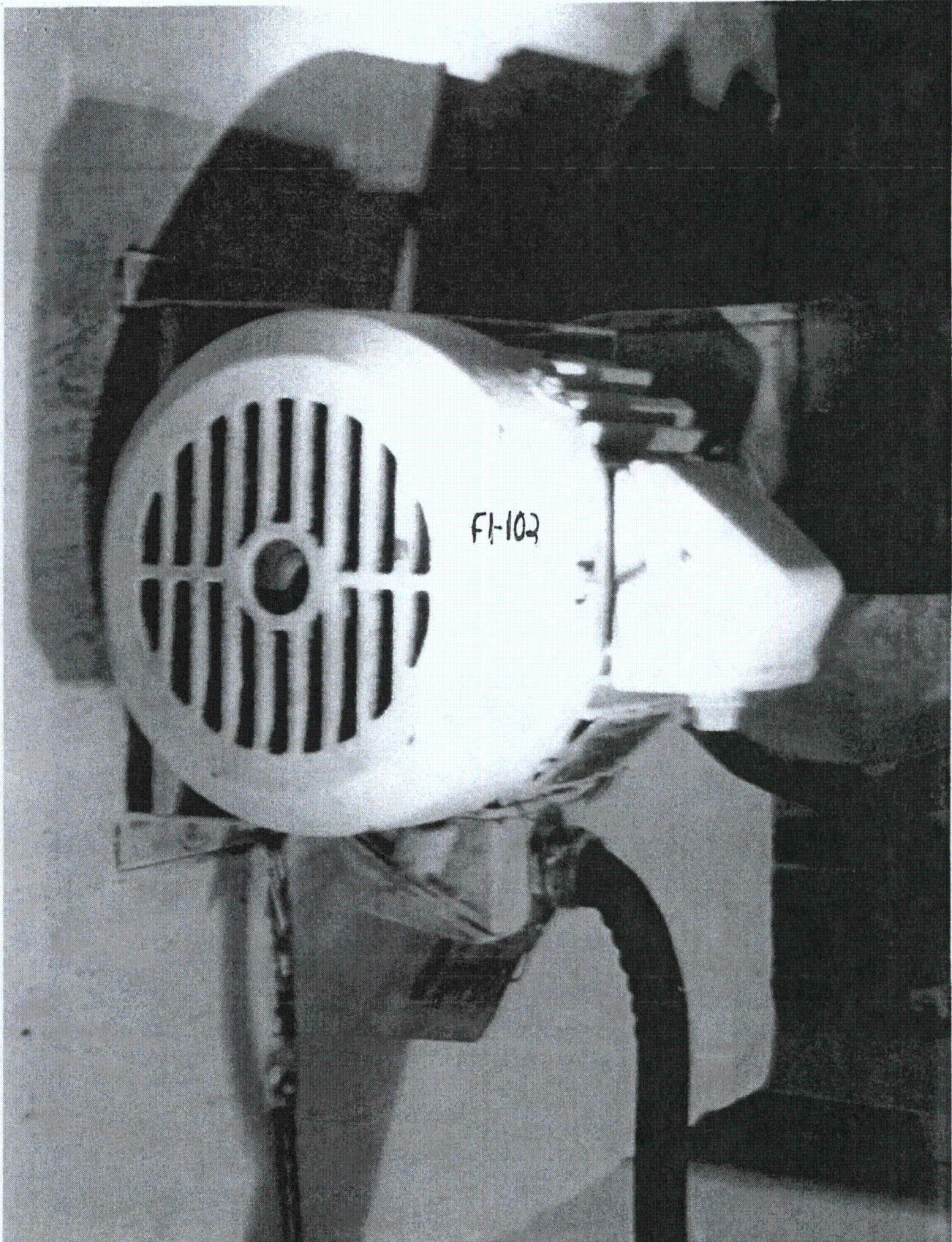
Sheet 4 of 5





F1-102

Sheet 5 of 5



F1-103

Sheet 1 of 36  
 Status: Y  N  U

**Seismic Walkdown Checklist (SWC)**

Equipment ID No. Q1Y52P502B Equip. Class<sup>1</sup> 5

Equipment Description DIESEL GEN 1B FUEL OIL STORAGE TRANSFER PUMP

Location: Bldg. YARD Floor El. 155 Room, Area Day Storage Area

Manufacturer, Model, Etc. (optional but recommended) \_\_\_\_\_

**Instructions for Completing Checklist**

This checklist may be used to document the results of the Seismic Walkdown of an item of equipment on the SWEL. The space below each of the following questions may be used to record the results of judgments and findings. Additional space is provided at the end of this checklist for documenting other comments.

**Anchorage**

1. Is the anchorage configuration verification required (i.e., is the item one of the 50% of SWEL items requiring such verification)? Y  N
  
2. Is the anchorage free of bent, broken, missing or loose hardware? Y  N  U  N/A
  
3. Is the anchorage free of corrosion that is more than mild surface oxidation? Y  N  U  N/A
  
4. Is the anchorage free of visible cracks in the concrete near the anchors? Y  N  U  N/A
  
5. Is the anchorage configuration consistent with plant documentation? (Note: This question only applies if the item is one of the 50% for which an anchorage configuration verification is required.) Y  N  U  N/A   
 U-161436 Version 1.0
  
6. Based on the above anchorage evaluations, is the anchorage free of potentially adverse seismic conditions? Y  N  U

<sup>1</sup> Enter the equipment class name from Appendix B: Classes of Equipment.

F1-103

Sheet 2 of 36

Status: Y  N  U

**Seismic Walkdown Checklist (SWC)**

Equipment ID No. Q1Y52P502B Equip. Class<sup>1</sup> 5

Equipment Description DIESEL GEN 1B FUEL OIL STORAGE TRANSFER PUMP

**Interaction Effects**

7. Are soft targets free from impact by nearby equipment or structures? Y  N  U  N/A

8. Are overhead equipment, distribution systems, ceiling tiles and lighting, and masonry block walls not likely to collapse onto the equipment? Y  N  U  N/A

9. Do attached lines have adequate flexibility to avoid damage? Y  N  U  N/A

10. Based on the above seismic interaction evaluations, is equipment free of potentially adverse seismic interaction effects? Y  N  U

**Other Adverse Conditions**

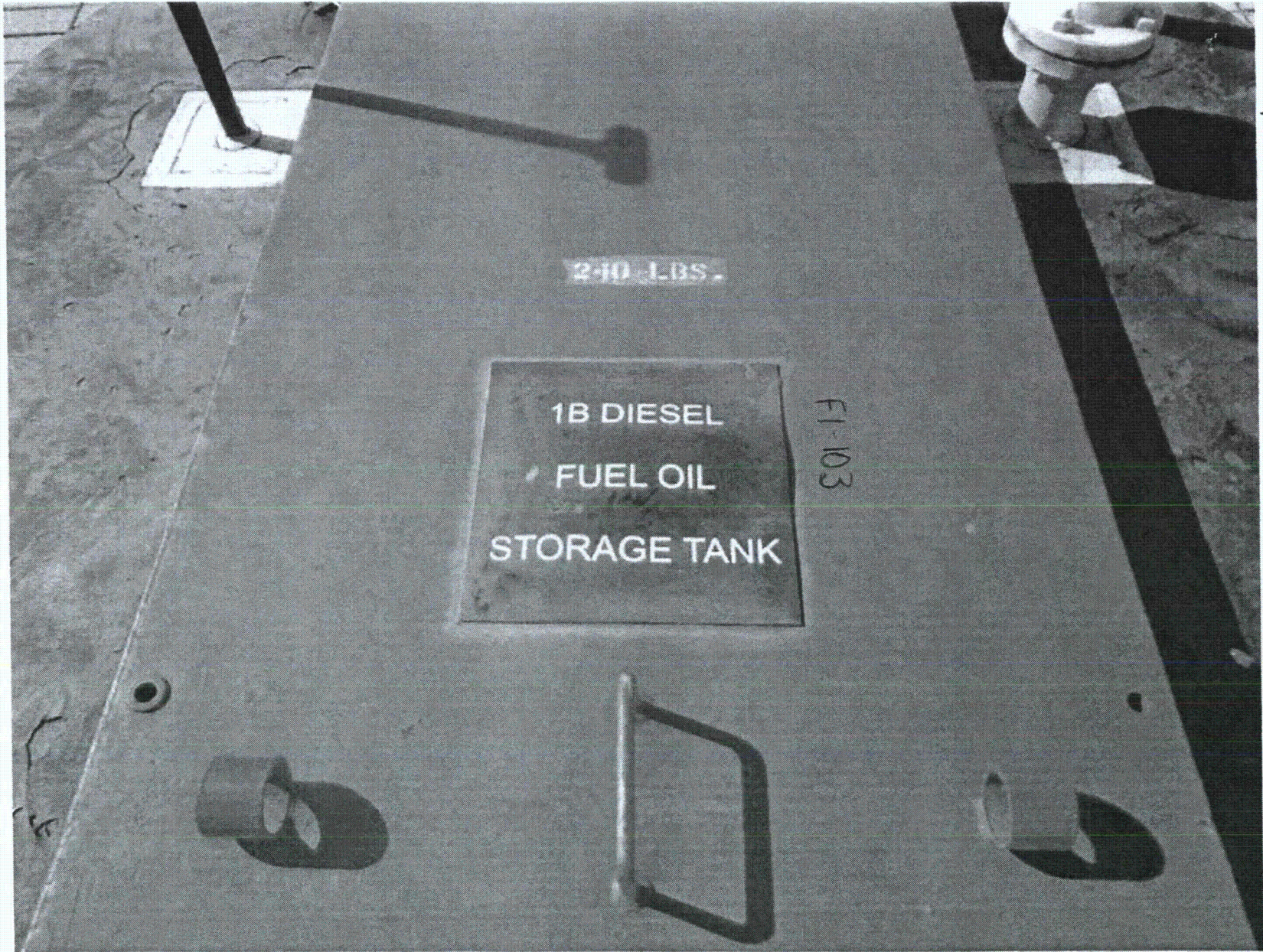
11. Have you looked for and found no other seismic conditions that could adversely affect the safety functions of the equipment? Y  N  U

**Comments** (Additional pages may be added as necessary)

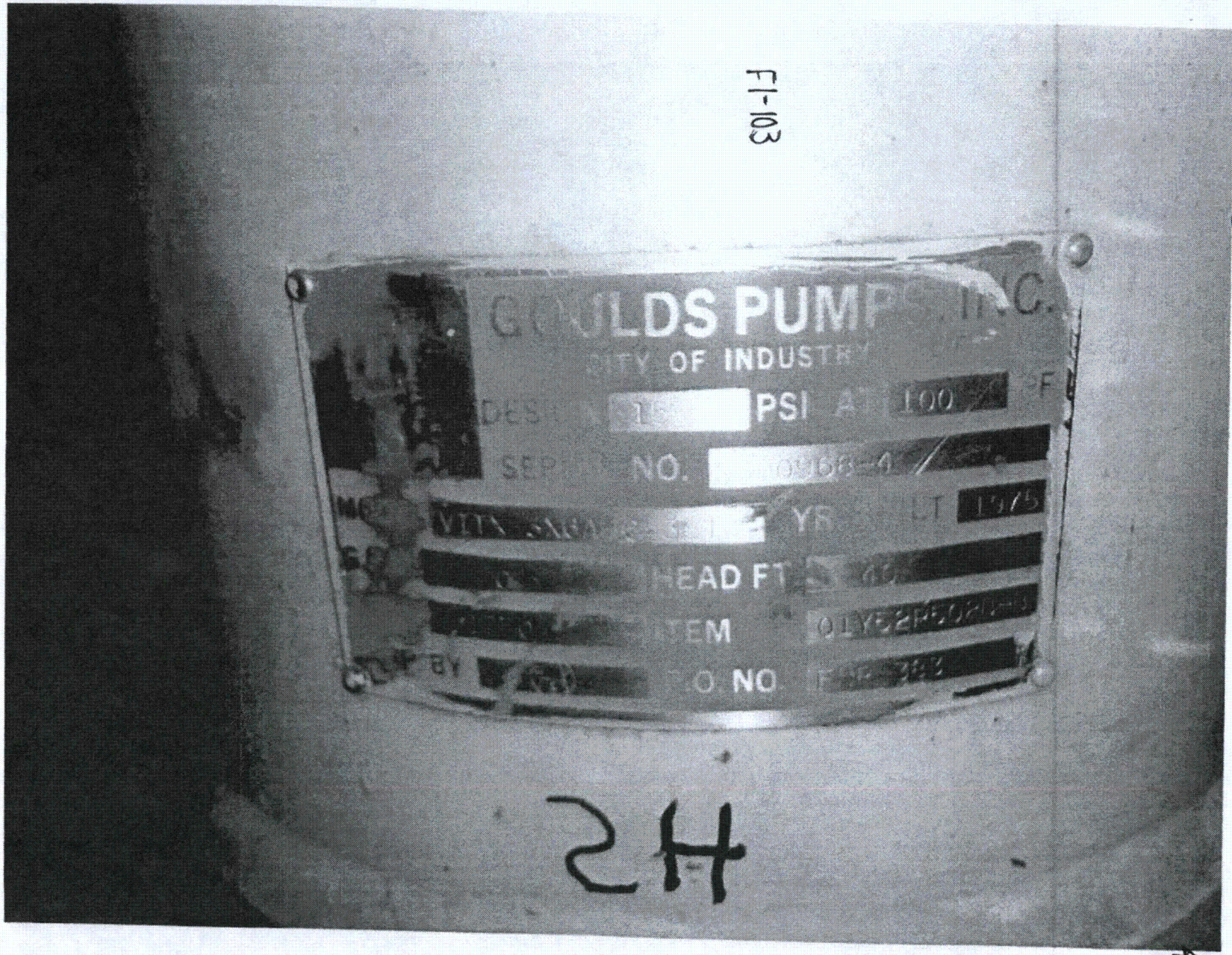
Mass added to pump to attenuate vibrations per MDC S484537901 and the effect on the pump/motor is evaluated for in S484537901C405.

Evaluated by: Laura MacClay Laura MacClay Date: 9/11/12

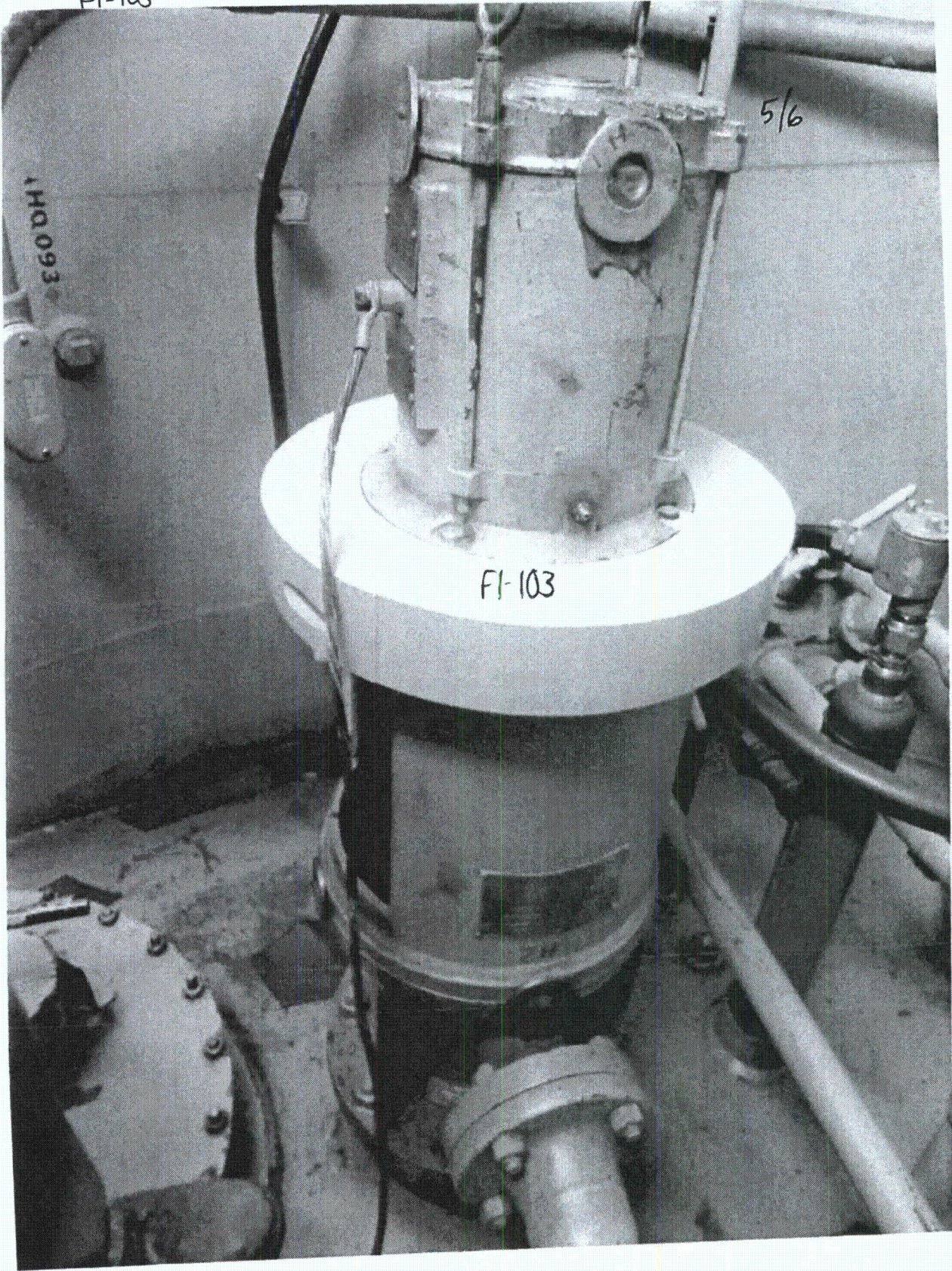
Terry A. Millen TERRY A. MILLEN 9/11/2012

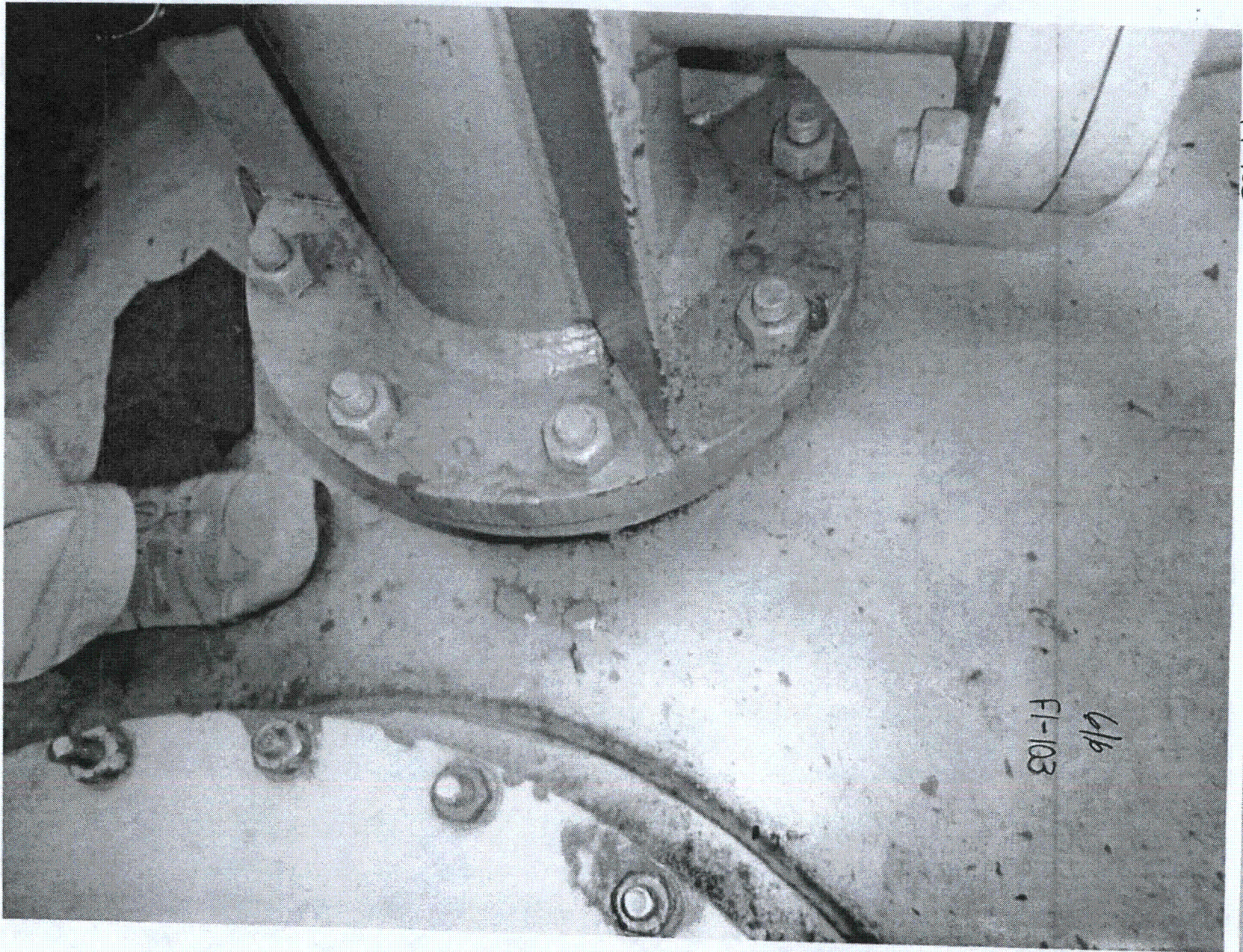


F1-103



F1-103





F1-104

JSM 8/28/12

Sheet 1 of 8<sup>13</sup>

Status: Y  N  U

**Seismic Walkdown Checklist (SWC)**

Equipment ID No. QSH11NGEPB2508 Equip. Class<sup>1</sup> 20

Equipment Description EMERGENCY POWER BOARD

Location: Bldg. AUXILIARY Floor El. 155 Room, Area \_\_\_\_\_

Manufacturer, Model, Etc. (optional but recommended) \_\_\_\_\_

**Instructions for Completing Checklist**

This checklist may be used to document the results of the Seismic Walkdown of an item of equipment on the SWEL. The space below each of the following questions may be used to record the results of judgments and findings. Additional space is provided at the end of this checklist for documenting other comments.

**Anchorage**

1. Is the anchorage configuration verification required (i.e., is the item one of the 50% of SWEL items requiring such verification)? Y  N

2. Is the anchorage free of bent, broken, missing or loose hardware? Y  N  U  N/A   
 CABINET IS WELDED TO EMBEDDED STEEL IN THE FLOOR.  
 SEE COMMENTS ON PGS 2 & 3

3. Is the anchorage free of corrosion that is more than mild surface oxidation? Y  N  U  N/A

4. Is the anchorage free of visible cracks in the concrete near the anchors? Y  N  U  N/A

5. Is the anchorage configuration consistent with plant documentation? Y  N  U  N/A   
 (Note: This question only applies if the item is one of the 50% for which an anchorage configuration verification is required.)

THE SEWS PACKAGE FOR THIS PANEL WAS NOT AVAILABLE. SEE COMMENTS, PGS 2 & 3

6. Based on the above anchorage evaluations, is the anchorage free of potentially adverse seismic conditions? Y  N  U

<sup>1</sup> Enter the equipment class name from Appendix B: Classes of Equipment.



F1-104

8/28/12

Sheet 2 of 3

Status: Y  N  U

**Seismic Walkdown Checklist (SWC)**

Equipment ID No. QSH11NGEPB2508 Equip. Class: 20

Equipment Description EMERGENCY POWER BOARD

**Interaction Effects**

7. Are soft targets free from impact by nearby equipment or structures? Y  N  U  N/A

8. Are overhead equipment, distribution systems, ceiling tiles and lighting, and masonry block walls not likely to collapse onto the equipment? Y  N  U  N/A

9. Do attached lines have adequate flexibility to avoid damage? Y  N  U  N/A

10. Based on the above seismic interaction evaluations, is equipment free of potentially adverse seismic interaction effects? Y  N  U

**Other Adverse Conditions**

11. Have you looked for and found no other seismic conditions that could adversely affect the safety functions of the equipment? Y  N  U

**Comments** (Additional pages may be added as necessary)

INSPECTION OF ANCHORAGES (WELDS) ON THE FRONT SIDE, I.P. THE MAIN CONTROL ROOM SIDE, OF THIS PANEL REQUIRED THE REMOVAL OF A 3" VINYL KICK PLATE. THE PLANT OPERATIONS SHIFT SUPERVISOR WOULD NOT ALLOW REMOVAL OF THIS KICK PLATE TO COMPLETE THE INSPECTION.

Evaluated by: S. YUAN Stephen Yuan Date: 8-28-12  
P. MIKTOS Paul Miktos 8-28-12

INSPECTIONS FROM THE REAR DOORS FOUND THE BOTTOM 4" OF EACH PANEL SEGMENT TO BE FILLED WITH A <sup>BLACK</sup> SUBSTANCE THAT APPEARED SIMILAR TO PENETRATION SEAL MATERIAL

F1-104

Sheet 3 of 3<sup>16</sup> JAA

Status: Y  N  U  8/28/12

**Seismic Walkdown Checklist (SWC)**

Equipment ID No. QSH11NGEPB2508 Equip. Class: 20

Equipment Description EMERGENCY POWER BOARD

Photographs COMMENTS

BASED ON REVIEWS/INSPECTIONS OF MORE THAN 10 FLOOR MOUNTED CONTROL ROOM PANELS AND CABINETS THAT CONCLUDED THE EXISTING WELDS ARE CONFIGURED AS PER SEWS PACKAGES; AND BASED ON VERIFICATION OF EXISTING WELDS ON THE BACK SIDE OF THIS PANEL, IT IS JUDGED THAT THE ANCHORAGE FOR THIS PANEL IS IN ACCORDANCE WITH EXISTING CONFIGURATION CONTROL DOCUMENTATION.

AN IPEEE VULNERABILITY FOR THIS COMPONENT WAS A POTENTIAL SEISMIC INTERACTION WITH LOOSE LIGHTS IN THE OVERHEAD. ALTHOUGH NOT SPECIFICALLY

Note: ADDRESSED IN THE 8-28-12 WRITE UP OF THIS SWC, BASED ON A TEL-CON DISCUSSION WITH S.YUAN ON 01-17-14, AND BASED ON THE ORIGINAL RESPONSES

TO QUESTIONS 7, 10 & 11 ON PAGE 2, IT IS CONCLUDED THAT THE IPEEE VULNERABILITY HAS BEEN ADDRESSED BY THE PLANT AND NO LONGER EXISTS

S.YUAN: *Paul Miktus for S.YUAN* 01/17/14  
 P.MIKTUS: *Paul Miktus* 01/17/14

Note:

Note:

