

9011-90W
SHEET 2

IVHO1CA
SSW PUMP
ROOM A
SUPPLY FAN
K-2904

IVHO1A,B
SSW PUMP
ROOM A
COOLING COILS
K-2902

IVHO1CC
SSW PUMP
ROOM C
SUPPLY FAN
K-2904

IVHO3A
SSW PUMP
ROOM C
COOLING COIL
K-2902

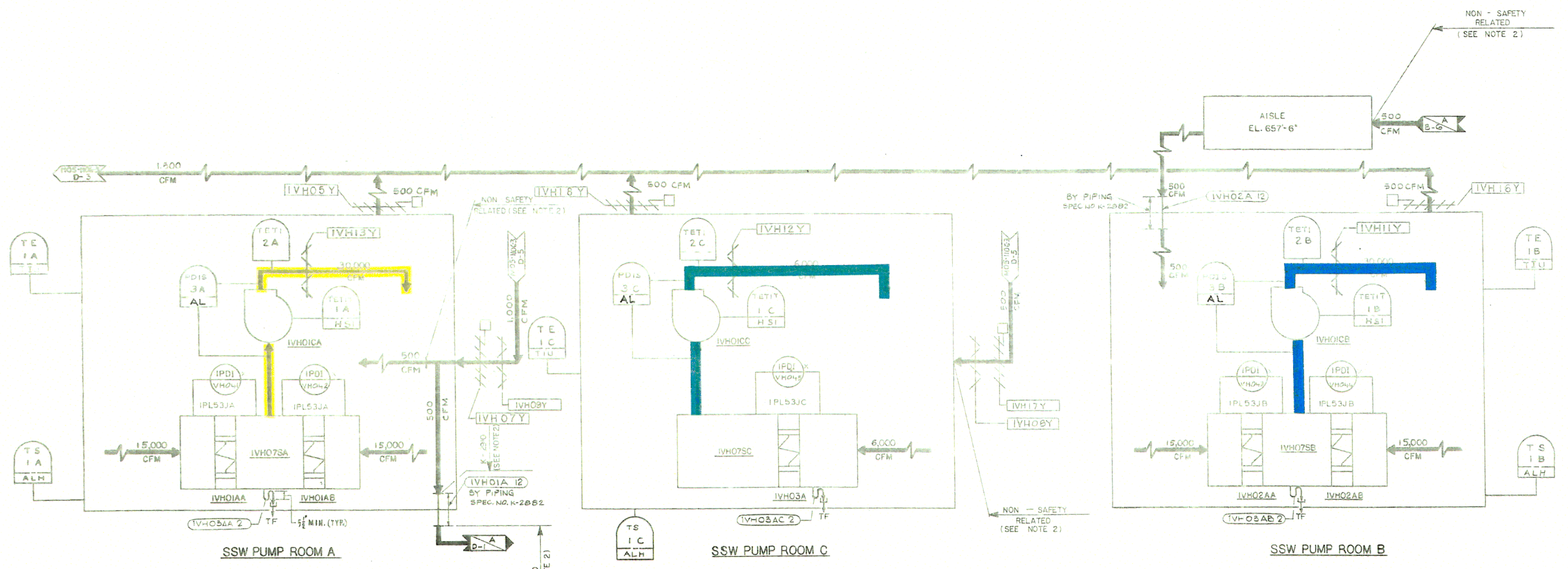
IVHO7SA
SSW PUMP
ROOM A
COIL CABINET
K-2902

IVHO7SB
SSW PUMP
ROOM B
COIL CABINET
K-2902

IVHO7SC
SSW PUMP
ROOM C
COIL CABINET
K-2902

IVHO1CB
SSW PUMP
ROOM B
SUPPLY FAN
K-2904

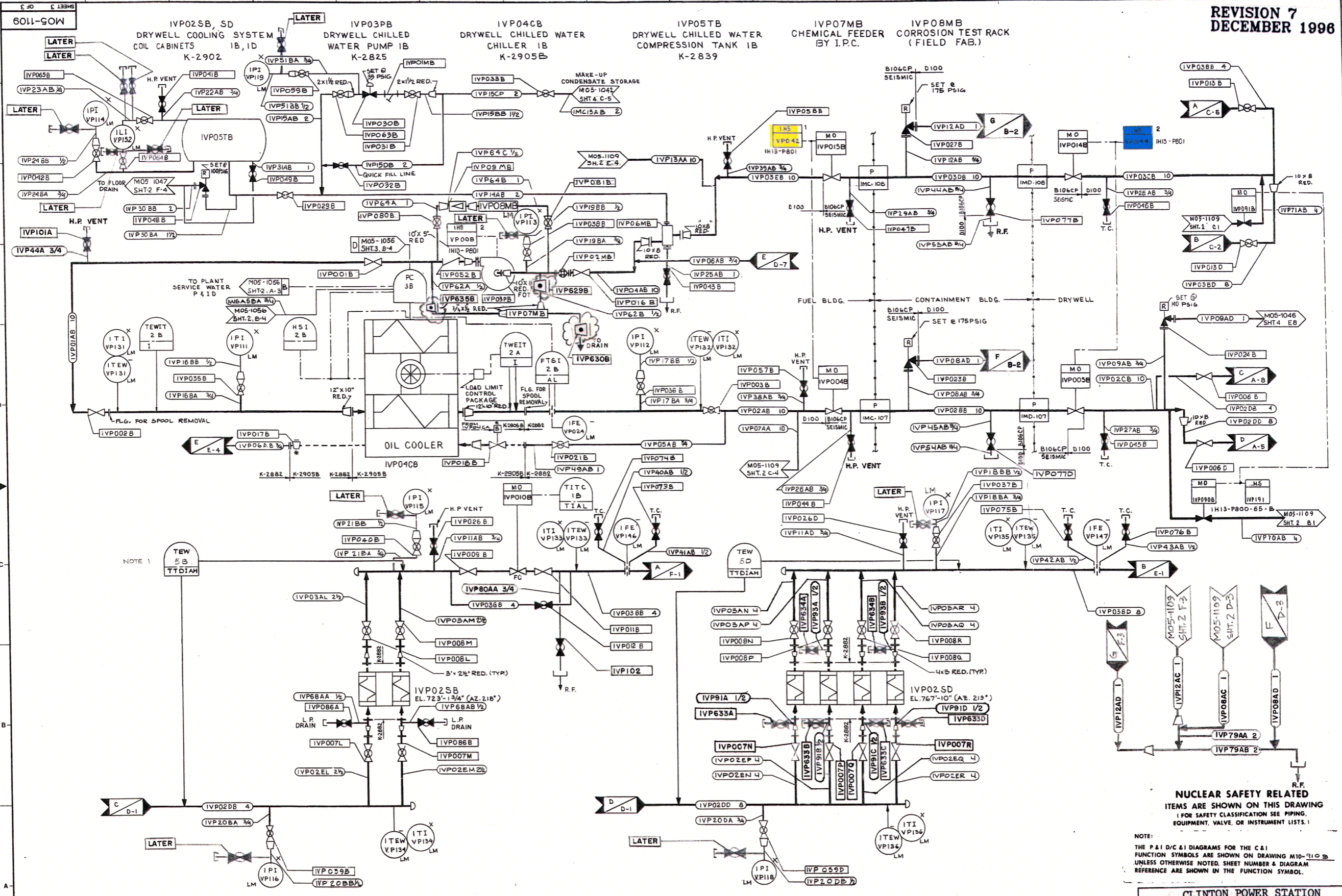
IVHO2AA,B
SSW PUMP
ROOM B
COOLING COILS
K-2902



**NUCLEAR SAFETY RELATED
ITEMS ARE SHOWN ON THIS DRAWING**
(FOR SAFETY CLASSIFICATION SEE PIPING,
EQUIPMENT, VALVE, OR INSTRUMENT LISTS.)

- NOTES:**
- 1 THE P&ID/C&I DIAGRAMS FOR THE C&I FUNCTION SYMBOLS ARE SHOWN ON DRAWING M10-9106 UNLESS OTHERWISE NOTED SHEET NUMBER & DIAGRAM REFERENCE ARE SHOWN IN THE FUNCTION SYMBOL
 - 2 NUCLEAR SAFETY-RELATED DUCTWORK SYSTEM IS SHOWN ON THIS P&ID THIS CLASSIFICATION APPLIES TO DUCTWORK AND DUCTWORK ACCESSORIES (EXCEPT DAMPERS) FURNISHED, FABRICATED AND INSTALLED UNDER SPECIFICATION K-290. FOR SAFETY CLASSIFICATION OF DUCTWORK SUPPORTS, SEE SUPPORT DRAWINGS. FOR SAFETY CLASSIFICATION OF EQUIPMENT, SEE EQUIPMENT LIST. FOR SAFETY CLASSIFICATION OF PIPING/VALVES SEE LINE/VALVE LIST. FOR SAFETY CLASSIFICATION OF DAMPERS, SEE APPROPRIATE DAMPER LIST.

**CLINTON POWER STATION
UPDATED SAFETY ANALYSIS REPORT**
FIGURE 3.6-1
DIVISIONAL SEPARATION AND
HIGH-ENERGY P&ID'S-
SHUTDOWN SERVICE WATER VENTILATION
SHEET 95 OF 111



NOTE 1

NUCLEAR SAFETY RELATED
ITEMS ARE SHOWN ON THIS DRAWING
(FOR SAFETY CLASSIFICATION SEE PIPING,
EQUIPMENT, VALVE, OR INSTRUMENT LISTS.)

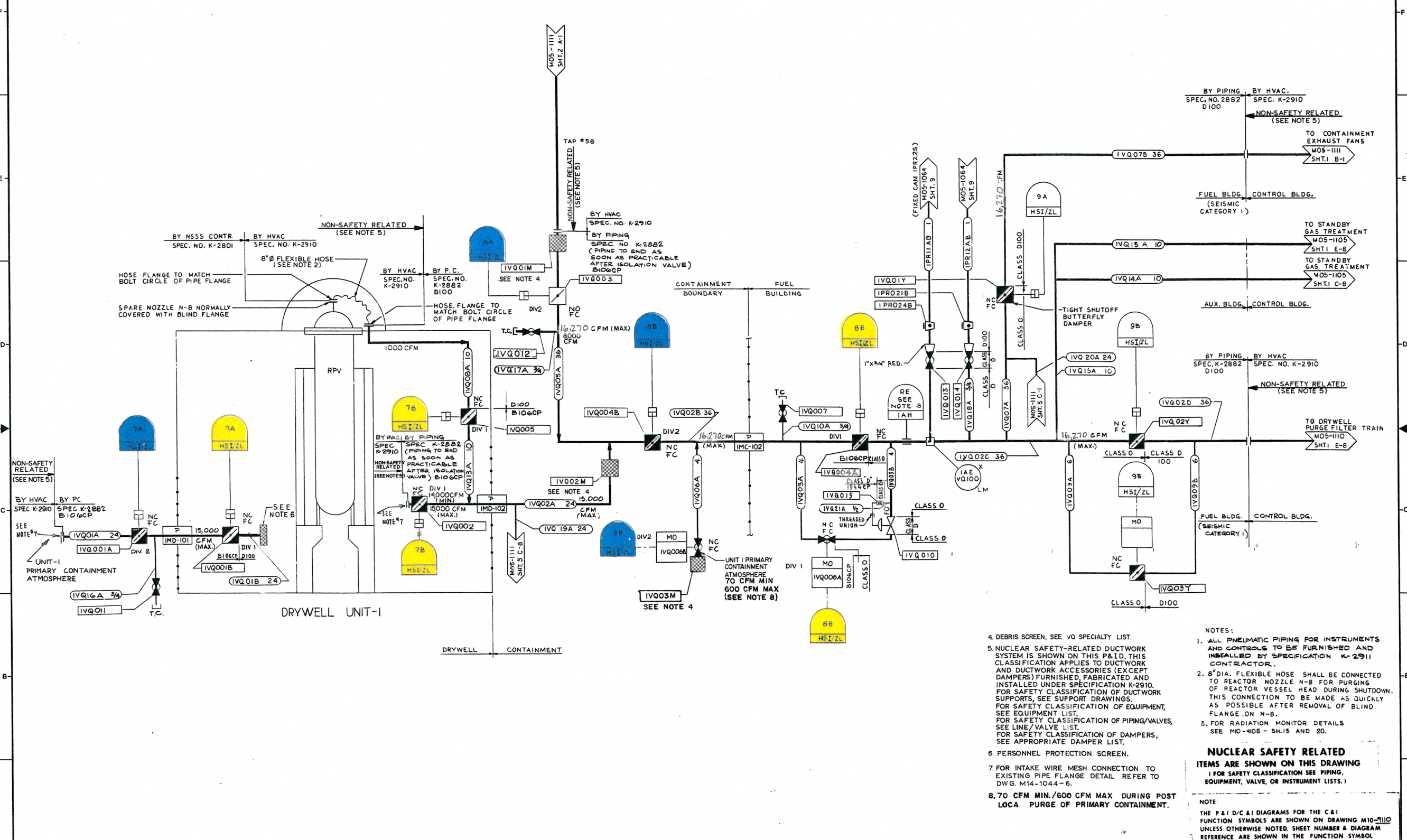
NOTE:
THE P&ID/C&I DIAGRAMS FOR THE C&I
FUNCTION SYMBOLS ARE SHOWN ON DRAWING M10-1016
UNLESS OTHERWISE NOTED. SHEET NUMBER & DIAGRAM
REFERENCE ARE SHOWN IN THE FUNCTION SYMBOL.

CLINTON POWER STATION
UPDATED SAFETY ANALYSIS REPORT

FIGURE 3.6-1
DIVISIONAL SEPARATION AND
HIGH-ENERGY P&ID'S-
DRYWELL COOLING CHILLED WATER SYSTEM
SHEET 97 OF 111

NOTE 1: INSTRUMENT LOOP IS ABANDONED IN PLACE.

OIII-III
MOS-III



4. DEBRIS SCREEN, SEE VQ SPECIALTY LIST.
5. NUCLEAR SAFETY-RELATED DUCTWORK SYSTEM IS SHOWN ON THIS P&ID. THIS CLASSIFICATION APPLIES TO DUCTWORK AND DUCTWORK ACCESSORIES (EXCEPT DAMPERS) FURNISHED, FABRICATED AND INSTALLED UNDER SPECIFICATION K-2910. FOR SAFETY CLASSIFICATION OF DUCTWORK SUPPORTS, SEE SUPPORT DRAWINGS. FOR SAFETY CLASSIFICATION OF EQUIPMENT, SEE EQUIPMENT LIST. FOR SAFETY CLASSIFICATION OF PIPING/VALVES, SEE LINE/VALVE LIST. FOR SAFETY CLASSIFICATION OF DAMPERS, SEE APPROPRIATE DAMPER LIST.
6. PERSONNEL PROTECTION SCREEN.
7. FOR INTAKE WIRE MESH CONNECTION TO EXISTING PIPE FLANGE DETAIL REFER TO DWG. M14-1044-6.
8. 70 CFM MIN./600 CFM MAX DURING POST LOCA PURGE OF PRIMARY CONTAINMENT.

NOTES:

1. ALL PNEUMATIC PIPING FOR INSTRUMENTS AND CONTROLS TO BE FURNISHED AND INSTALLED BY SPECIFICATION K-2911 CONTRACTOR.
2. 8" DIA. FLEXIBLE HOSE SHALL BE CONNECTED TO REACTOR NOZZLE N-8 FOR PURGING OF REACTOR VESSEL HEAD DURING SHUTDOWN. THIS CONNECTION TO BE MADE AS QUICKLY AS POSSIBLE AFTER REMOVAL OF BLIND FLANGE ON N-8.
3. FOR RADIATION MONITOR DETAILS SEE M10-1105 - SH.15 AND 20.

NUCLEAR SAFETY RELATED ITEMS ARE SHOWN ON THIS DRAWING
(FOR SAFETY CLASSIFICATION SEE PIPING, EQUIPMENT, VALVE, OR INSTRUMENT LISTS.)

NOTE
THE P&ID/C&I DIAGRAMS FOR THE C&I FUNCTION SYMBOLS ARE SHOWN ON DRAWING M10-1110 UNLESS OTHERWISE NOTED. SHEET NUMBER & DIAGRAM REFERENCE ARE SHOWN IN THE FUNCTION SYMBOL.

