

Nuclear Power Plant Protective Action Strategies

Randy Sullivan, CHP

**Office of Nuclear Security and Incident Response
Division of Preparedness and Response**

Nuclear Plant Regulation

- Statute allows operation of nuclear power plants if operated within regulations
- NRC sets the regulations and enforces compliance
- NRC can not shut down a plant in compliance
- Uncertainty was recognized in early design of nuclear plants
- Uncertainty may remain in modern designs
- The Commission issued a policy of Defense-in-Depth

Defense-in-Depth

- Policy long in effect
 - Containment buildings
 - Low population density
 - Construction oversight
 - Emergency preparedness

Nuclear Plant Emergency Plans

- Two main purposes
 - Mitigate the accident
 - Protect public health

Protective Action Strategy

- Operator is required to recommend evacuation or sheltering at most serious emergency (General Emergency)
- Civil authorities must decide and implement protective action
- 10 mile planning zone
- Planning for evacuation routes and care of evacuees
- Protective actions could be needed beyond planning zone

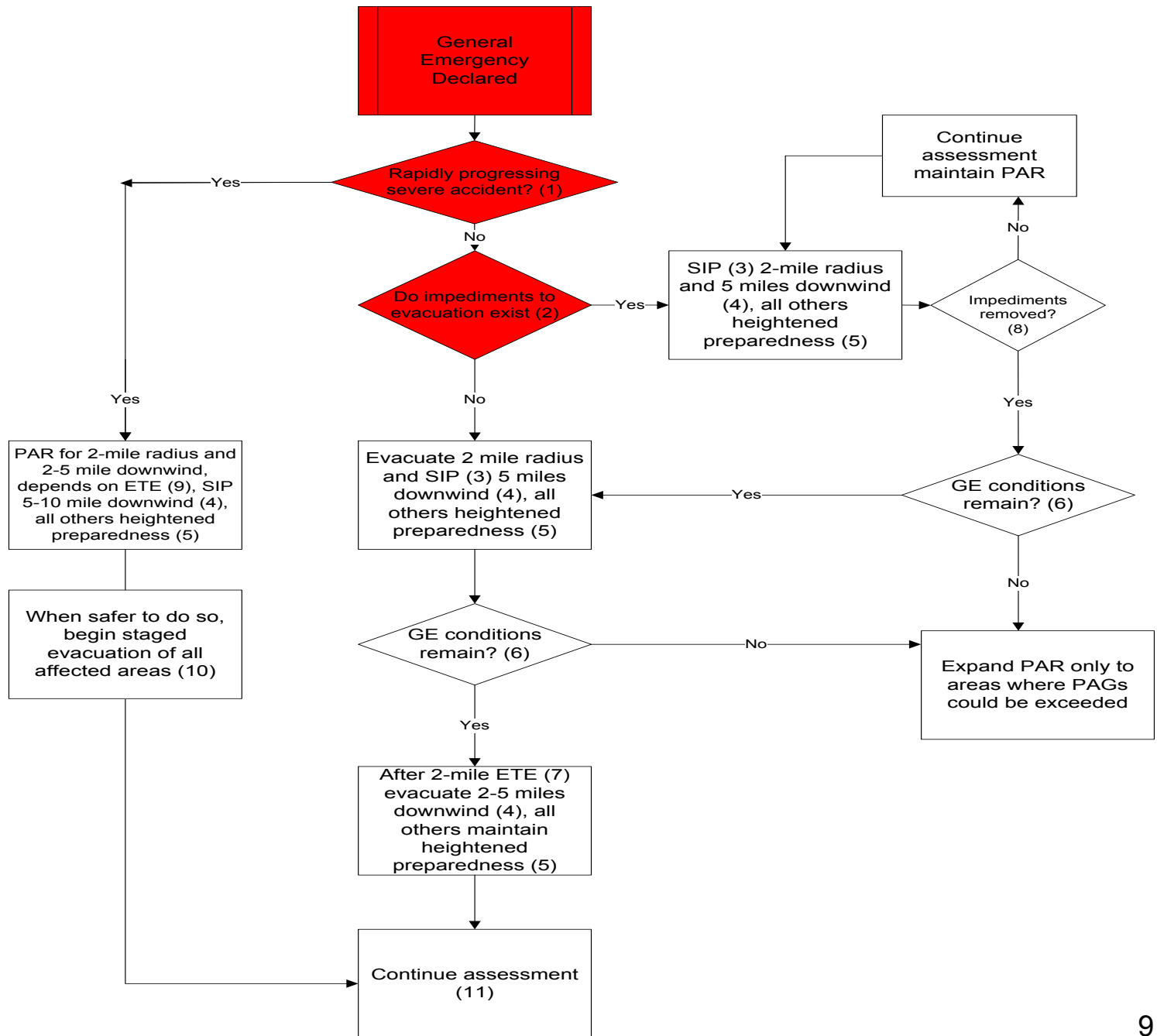
Study of Protective Action Recommendation (PAR) Guidance

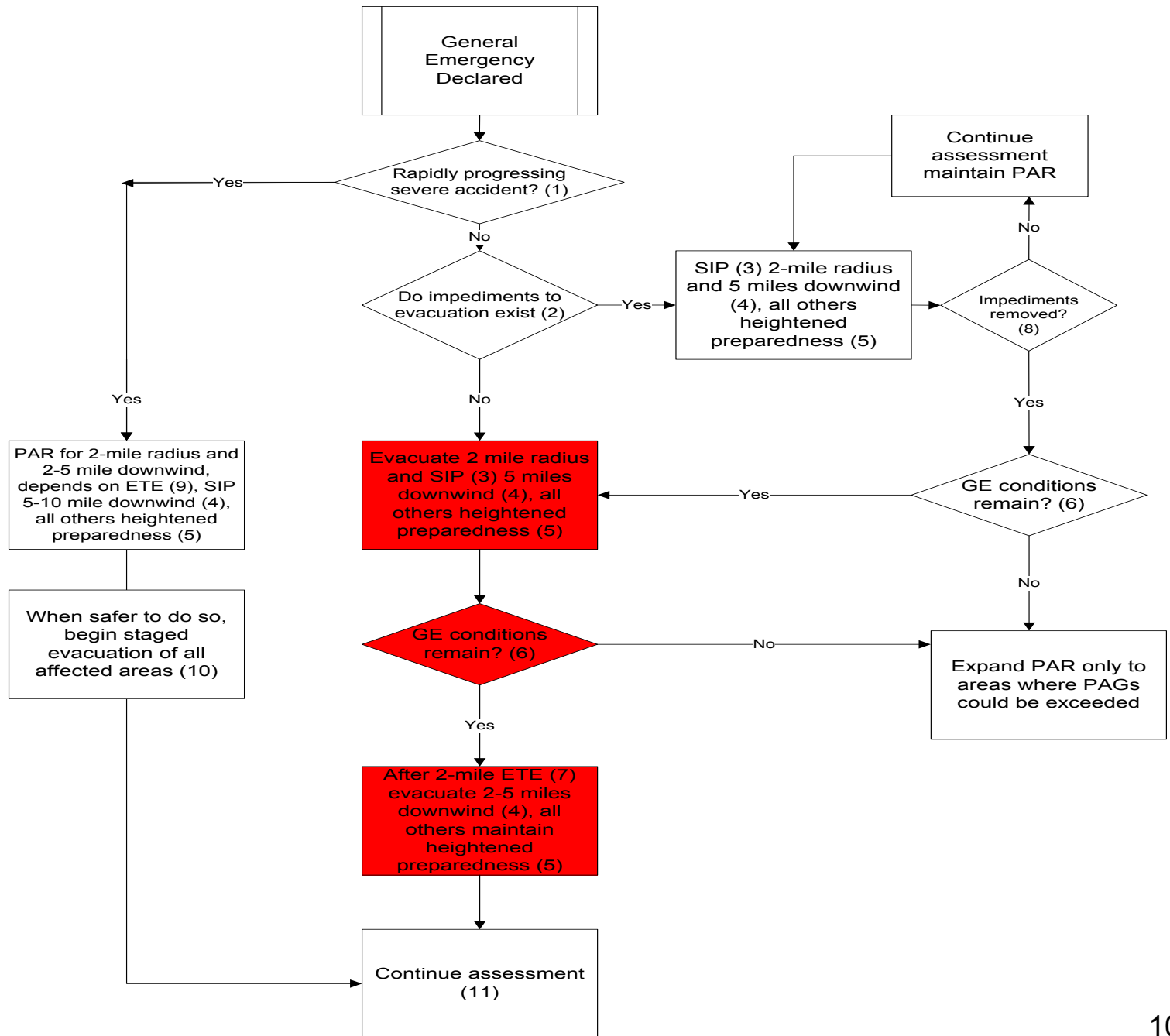
- NUREG/CR-6953, Volume 1
 - Alternative protective actions can reduce public dose during severe accidents
- NUREG/CR-6953, Volume 2
 - Insight into public tendencies in responding to protective action strategies
- NUREG/CR-6953, Volume 3 (in process)
 - Analyze protective action strategies for large early release

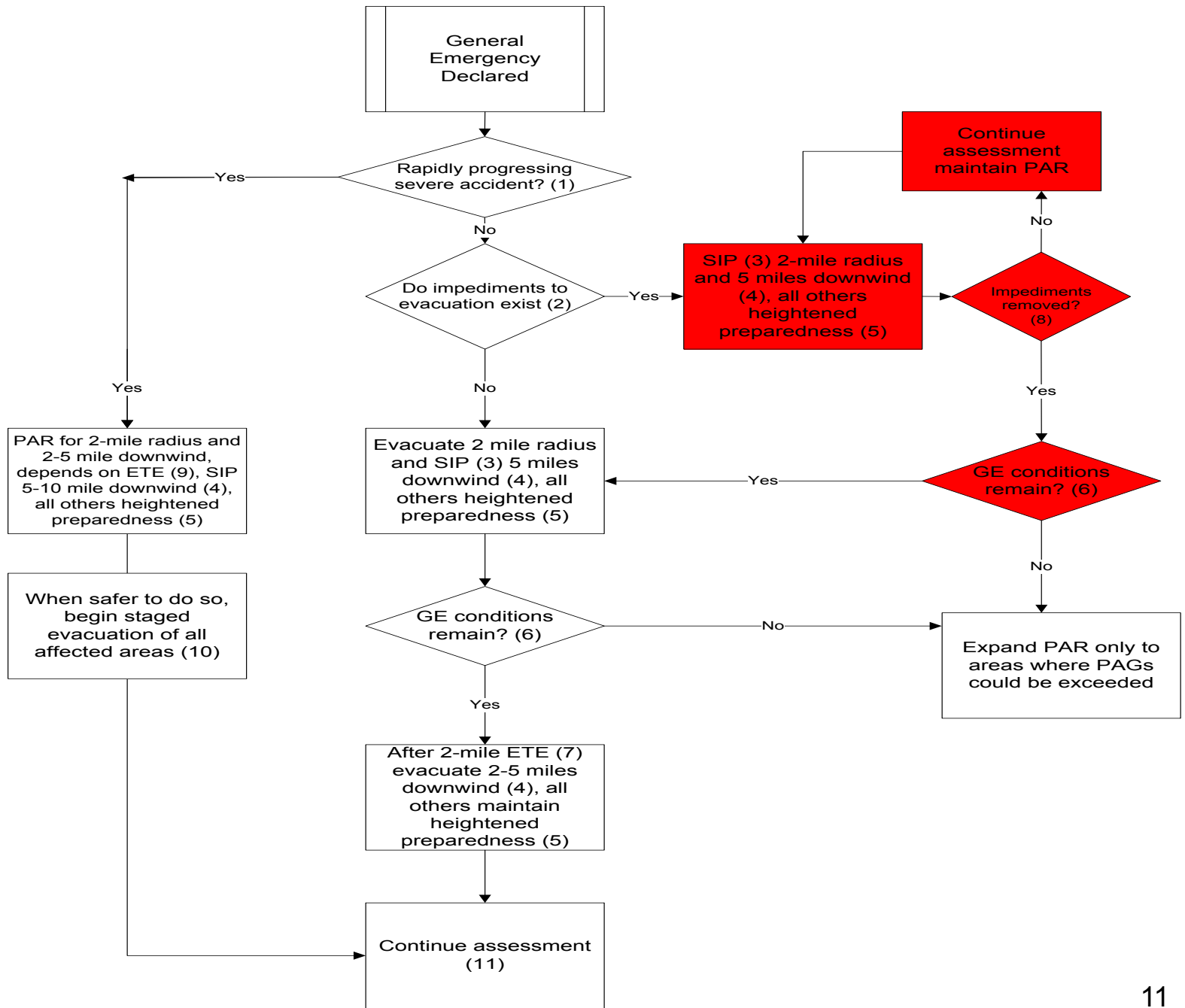
Results

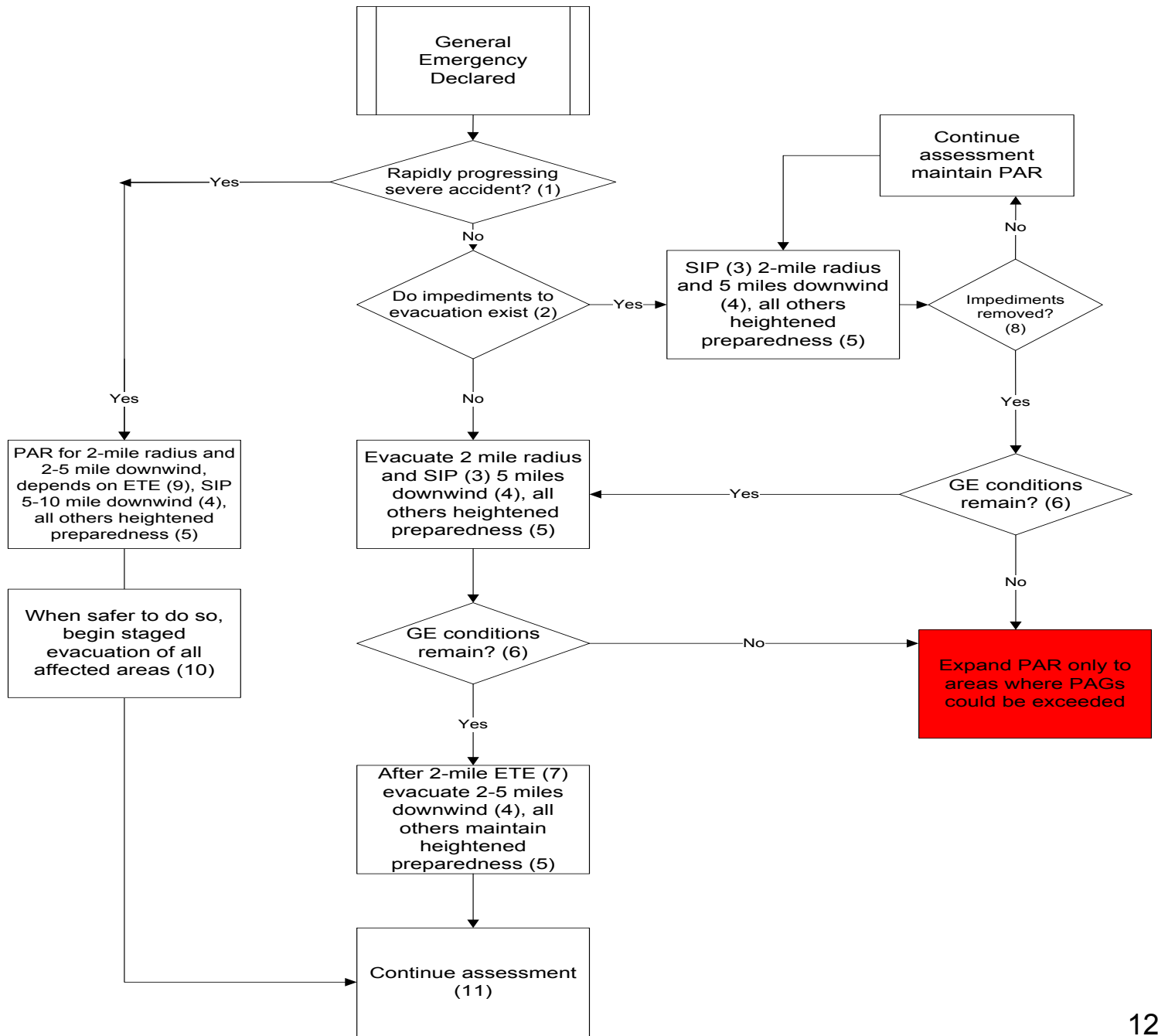
- NUREG-0654, Supplement 3 Revised
 - Evacuation remains major element
 - Staged evacuation is more protective
 - Shelter in place followed by evacuation is more protective for large early release at sites with longer evacuation times

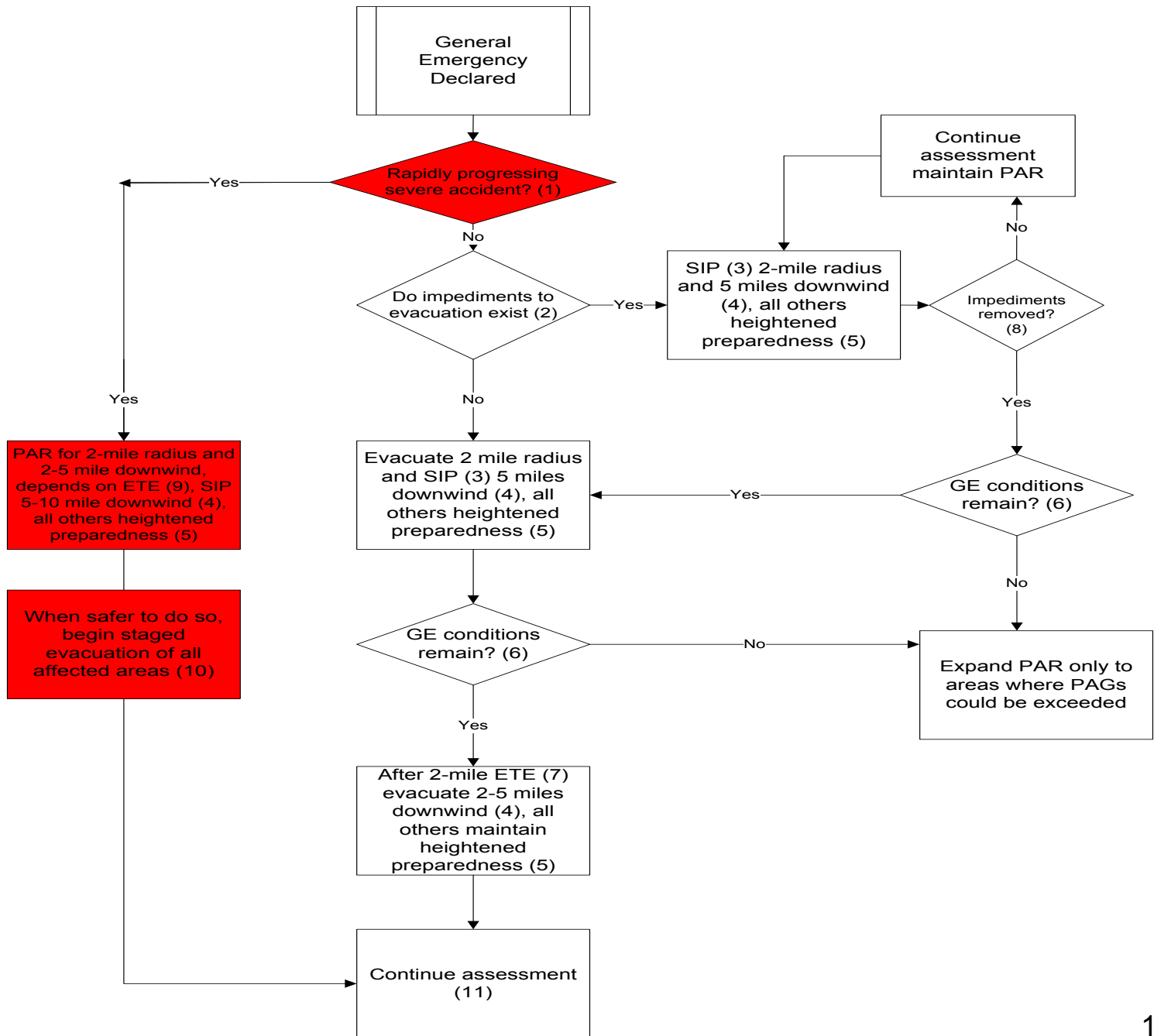
PAR Logic Diagram

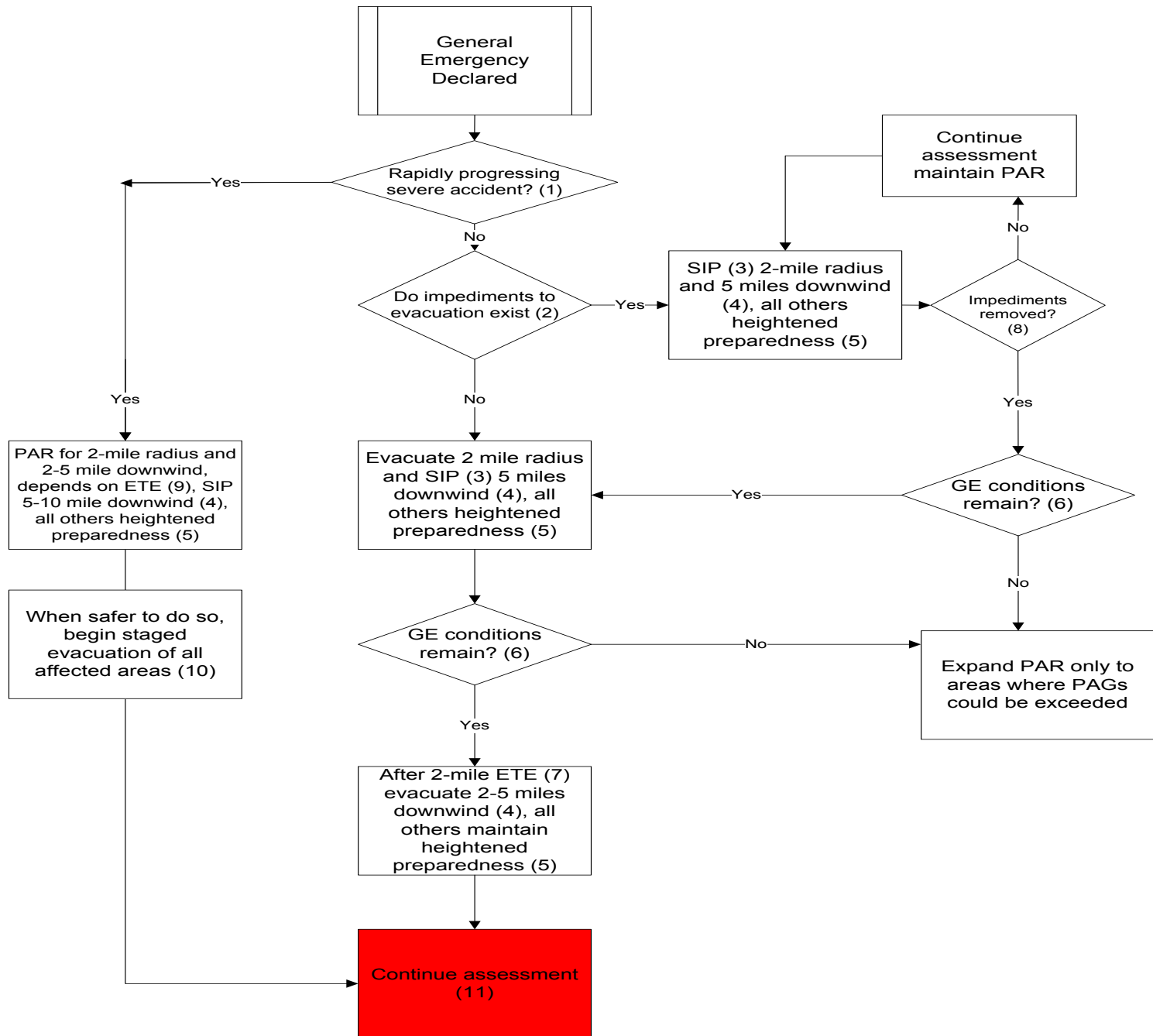












Questions?

Randy Sullivan, CHP

Senior Emergency Preparedness Specialist

(301) 287-3716

randy.sullivan@nrc.gov