



Reid Hospital
& Health Care Services

December 27, 2013

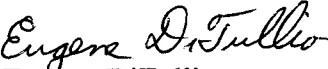
U. S. Nuclear Regulatory Commission
Materials Licensing Section
2443 Warrenville Road, Suite 210
Lisle, IL 60532-4352

Dear Sir or Madam:

Reid Hospital & Health Care Services would like to amend its Byproduct Materials License, Number 13-03284-02, to remove one of the areas of use at the 1100 Reid Parkway address of use. The area of use functioned as an outpatient nuclear medicine department but is to be converted to a non-restricted area. Enclosed is a close-out survey of the area.

If there are any questions concerning this license amendment, please feel free to contact me directly at 1-765-983-3166.

Sincerely,


Eugene DiTullio
Director of Radiology Services

RECEIVED DEC 31 2013

Close-out survey of 1100 Chester Boulevard, Richmond, Indiana
(Outpatient Nuclear Medicine Department)

Performed by: Patrick J. Byrne, D.A.B.R., C.H.P.
Medical Physics Consultants, Inc.

Radioactive materials usage at this area of use was limited to materials licensed under 10 CFR 35.100, 35.200, and 35.300. Additionally, cobalt-57, barium-133, and cesium-137 in sealed source form were possessed and used for equipment quality control.

Wipe tests for removable radioactive contamination were taken on 12/24/13 and analyzed in a Ludlum Model 243 (S/N: 145366) Shielded Well Scintillator coupled to a Ludlum Model 2200 (S/N: 138705) Scaler Ratemeter. A window of 50 to 400 keV was used to analyze the wipes. The efficiency of this system for cobalt-57 is 1.07 dpm/cpm.

The radiation levels survey was performed on 12/24/13 by Patrick Byrne, using a Ludlum Model 14C Geiger-Muller survey meter (S/N: 230348) with a pancake probe. The meter was calibrated on 04/19/13. The range used for the radiation level survey was 0.0 to 0.2 mR/hr.

Visual Inspection

The area was visually inspected to ensure that all radioactive waste had been removed. No radioactive material was located in the area.

Radiation Level Survey

No area demonstrated radiation levels in excess of the background reading of 0.02 mR/hr.

Sealed Sources

All sealed sources have been moved to the nuclear medicine department area of use, located at the 1100 Reid Parkway address of use. No sealed source had ever been found to be leaking.

Removable Contamination Survey Results

Wipe samples were counted in a Ludlum Model 243 Shielded Well Scintillator (S/N: 145366) coupled to a Ludlum Model 2200 Scaler Ratemeter (S/N: 138705). The efficiency of this system for Cobalt-57 is 1.07 dpm/cpm.

Background: 227 counts per minute

Wipe Number	Gross counts per minute	Net counts per minute	Disintegrations per minute
1	250	23	25
2	239	12	13
3	211	0	0
4	232	5	5
5	242	15	16
6	246	19	20
7	239	12	13
8	224	0	0
9	232	5	5
10	221	0	0
11	223	0	0
12	233	6	6
13	267	40	43
14	248	21	22
15	236	19	20
16	215	0	0
17	231	14	15
18	218	0	0
19	263	36	39
20	248	21	22
21	215	0	0
22	230	3	3
23	240	13	14
24	209	0	0
25	231	4	4
26	239	12	13
27	228	1	1
28	250	23	25
29	230	3	3
30	252	25	27
31	221	0	0
32	252	25	27
33	238	11	12
34	219	0	0
35	250	23	25
36	220	0	0
37	252	25	27
38	222	0	0

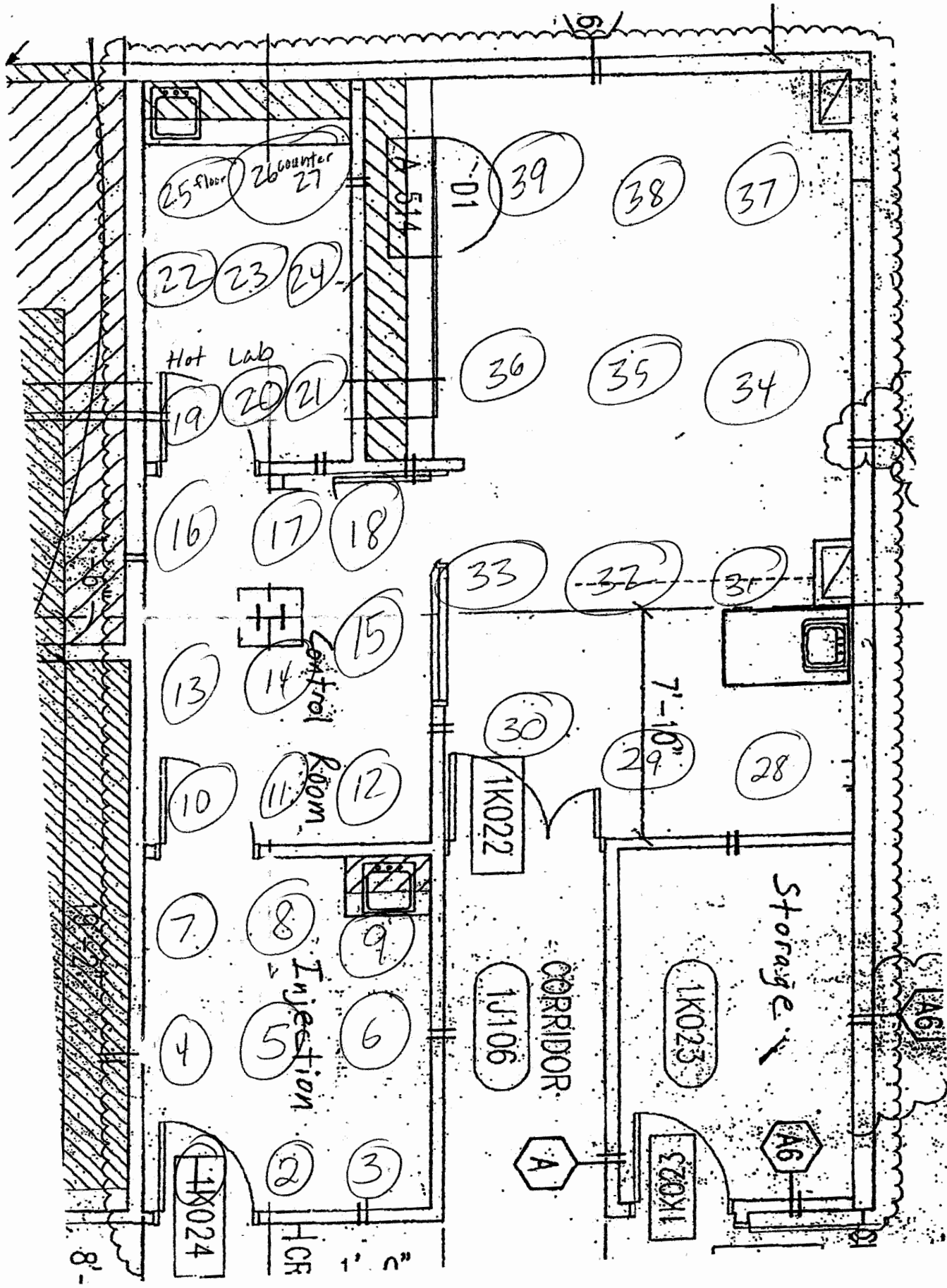
39	220	0	0
----	-----	---	---

*Please refer to the attached survey map for wipe locations.

Maximum removable contamination occurred in area 13. Gross count rate = 267 cpm/100cm². Net count rate (gross minus background) = 267 - 227 = 40 cpm/100cm². Net removable disintegrations per minute = 40 cpm/100cm² x 1.07 dpm/cpm = 42.8 dpm/100cm².

Conclusion

As of 12/24/13, all radioactive materials have been removed from the area of use and no removable contamination is present.





Reid Hospital
 & Health Care Services

1100 Reid Parkway
 Richmond, Indiana 47374

ReidHospital.com

CERTIFIED MAIL™

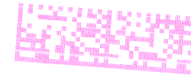


7100 1052 2270 0002 4706

neopostSM
 12/27/2013
US POSTAGE

FIRST-CLASS MAIL

\$06.31⁰



ZIP 47374
 041L12202609

U.S. NUCLEAR REGULATORY
 COMMISSION
 MATERIALS LICENCING SECTION
 2443 WARRENVILLE ROAD, SUITE 210
 LISLE, IL 60532-4352

6053294352 0021

