

<:nav id=mobile-nav class=mobile-nav sizcache="0" sizset="1">

[EPA Menu](#)

[ECHO Menu](#)



United States Environmental Protection Agency

[Log In](#) [Contact Us](#)

You are here [Home](#) » [Search Enforcement and Compliance Data](#) » [Search Results](#)

Search Results

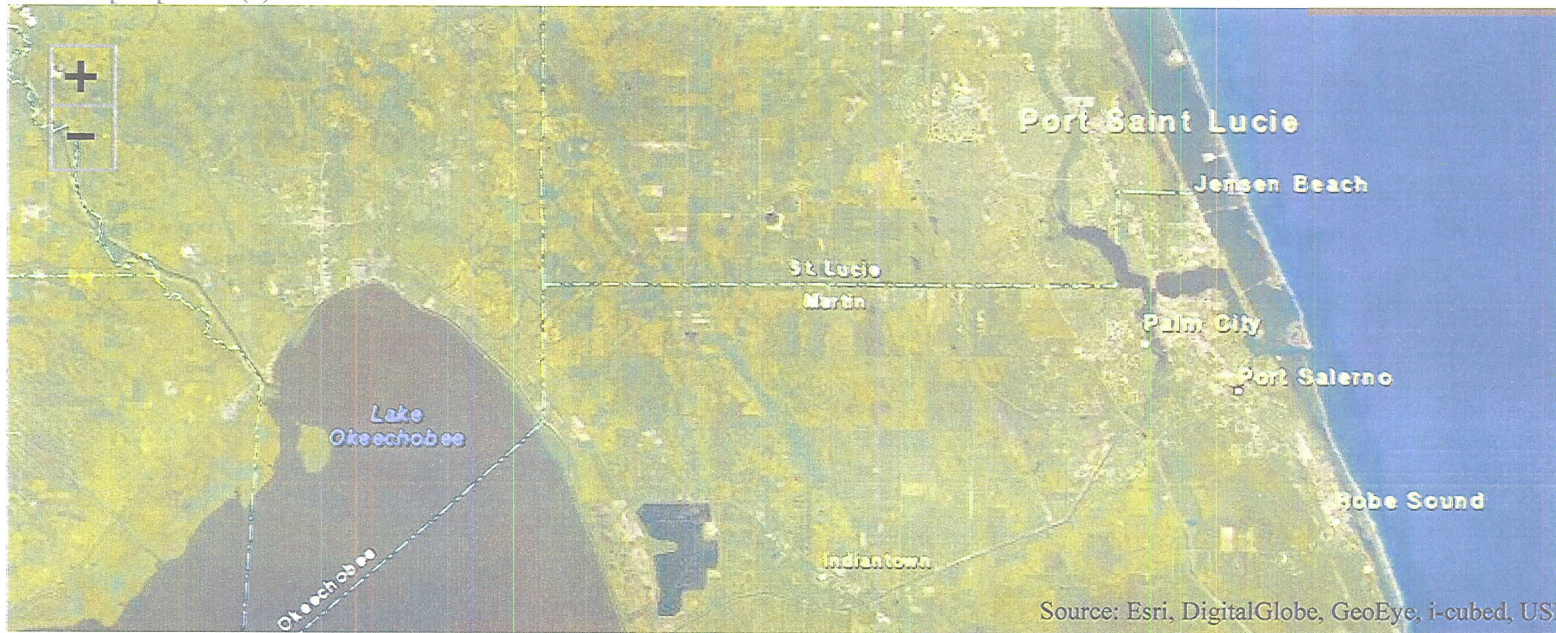
This page updates dynamically based on your search criteria and selections within the page.

[Hide Map \(#\)](#) [Hide Summary \(#\)](#) [Modify Search \(#\)](#)

[Report Violation \(http://epa.gov/tips/\)](http://epa.gov/tips/) [Help \(http://epa.gov/search_results_help\)](http://epa.gov/search_results_help)

[Map Legend \(#\)](#)

[Basemap Options \(#\)](#)



Source: Esri, DigitalGlobe, GeoEye, i-cubed, USI

[Customize](#)

[Columns \(#columns\)](#) [Download](#)

[Data \(#\)](#)

Facility Name	Mapped	Street Address	City	State	FRS ID	Current Significant Violations	Qtrs Non Comp (3 yrs)	Inspectic (5 yrs)
FPL - MARTIN PLANT facility details (detailed_facility_report? fid=110008320566)		21900 SOUTHWEST WARFIELD BOULEVARD STATE ROUTE 710	INDIANTOWN	FL	110008320566	No	0	10
FPL - ST LUCIE PLANT facility details (detailed_facility_report? fid=110006645247)		6501 SOUTH STATE ROAD	JENSEN BEACH	FL	110006645247	No	0	15
INDIANTOWN COGENERATION LP facility details (detailed_facility_report? fid=110002394793)		13303 SOUTHWEST SILVER FOX LANE	INDIANTOWN	FL	110002394793	No	0	4
LOUIS DREYFUS CITRUS INC facility details (detailed_facility_report? fid=110000522337)		19100 SOUTHWEST WARFIELD BOULEVARD	INDIANTOWN	FL	110000522337	No	1	4
MARTIN CO.UTILITIES AND SOLID WASTE DEPT facility details (detailed_facility_report? fid=110038103815)		9101 S.W. BUSCH STREET	PALM CITY	FL	110038103815	No	0	4
VOUGHT AIRCRAFT INDUSTRIES INC facility details (detailed_facility_report? fid=110007031005)		1801 SOUTHEAST AIRPORT ROAD	STUART	FL	110007031005	No	0	11


Search Statistics(#)

6 Search Results

- Facilities with a Current Violation/s: 0
- Facilities with Violations in the Last Three Years: 1
- Facilities with Formal Enforcement Actions in the Last Five Years: 1
- CAA Sources: 6
- Facilities with CWA Permits: 6
- Facilities with RCRA IDs: 6
- Facilities with TRI Releases: 4

Search Criteria(#)

Date Last Updated (http://epa.gov/about_data#sources)

 -- **No Enforcement Actions Caveat:** The database shows no formal EPA or state enforcement action. Note that enforcement actions that are in process are not publicly available. For more information, continue to check this site for updates (monthly). The relevant state environmental agency also may have additional information ([state_data](#)). Also note that all violations do not receive formal enforcement actions. Violations that are minor, short in duration, or quickly corrected by the facility may not warrant formal enforcement action.

[Top of Page](#)

Social sites:

[More social media at EPA >](#)

[EPA Home](#)

[Privacy and Security Notice](#)

[Accessibility](#)

Last updated November 14, 2013