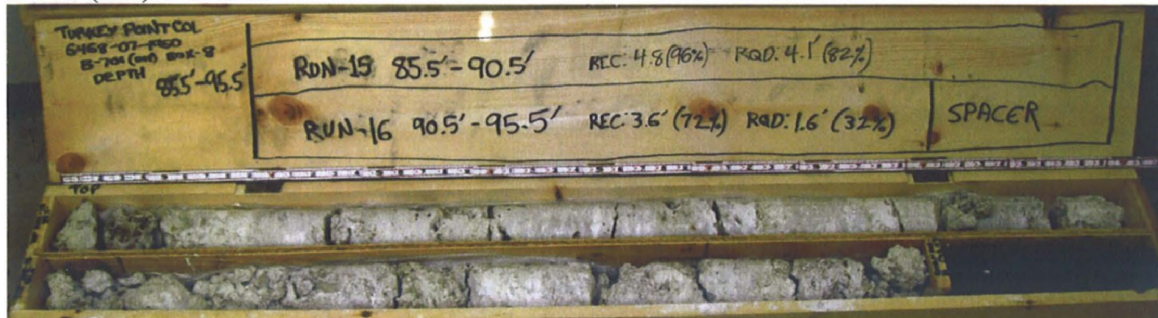




B-701 (DH) - Box 6



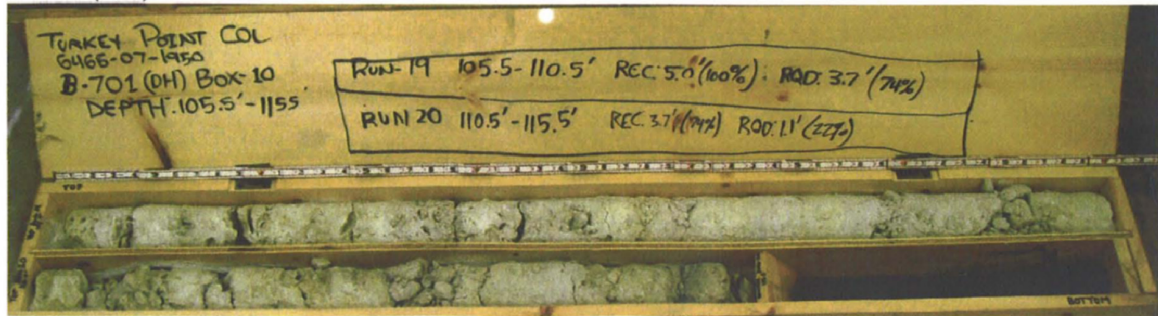
B-701 (DH) - Box 7



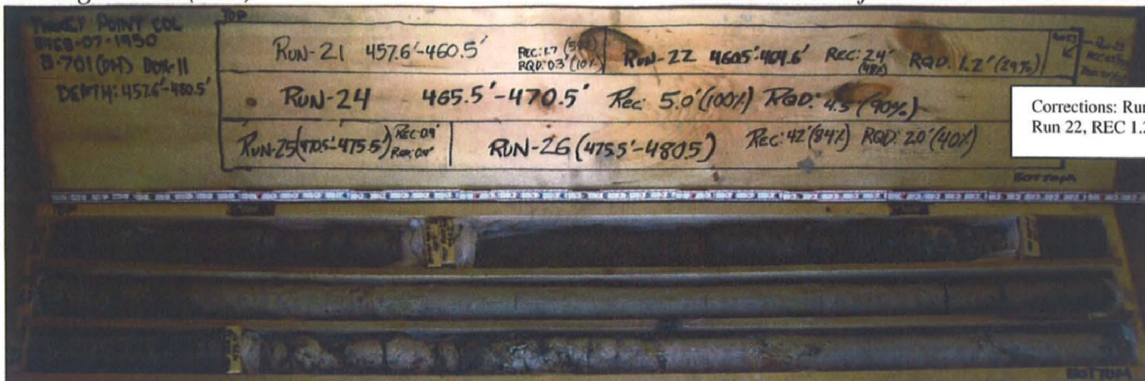
B-701 (DH) - Box 8



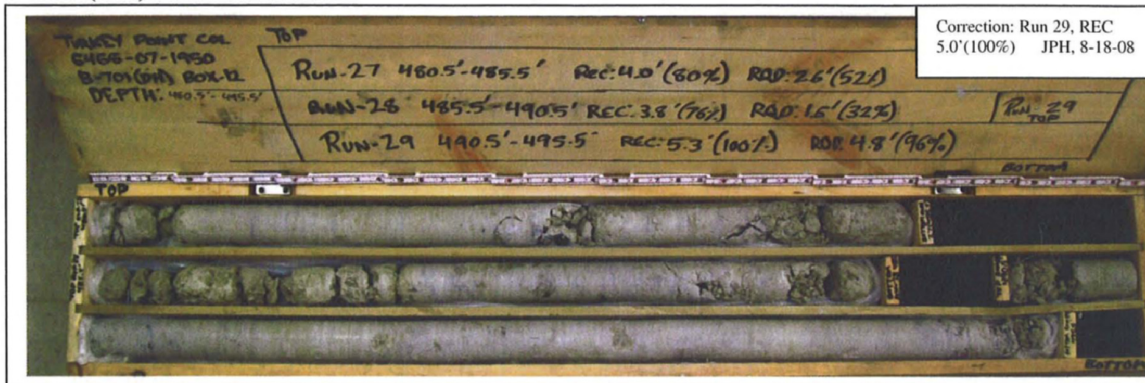
B-701 (DH) - Box 9



B-701 (DH) - Box 10



B-701 (DH) – Box 11



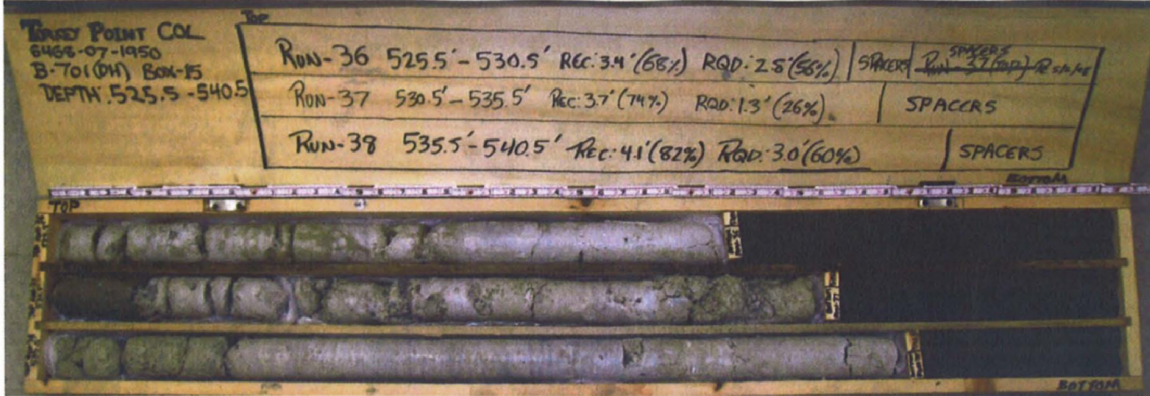
B-701 (DH) – Box 12



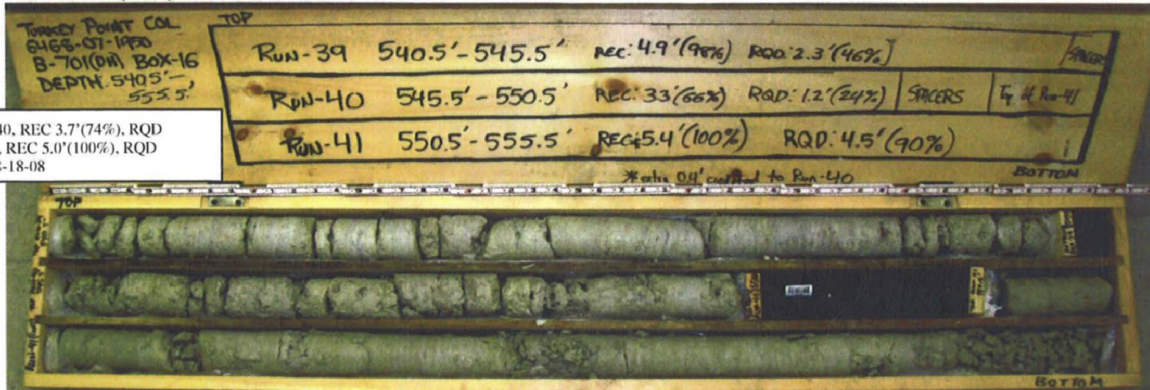
B-701 (DH) – Box 13



B-701 (DH) – Box 14

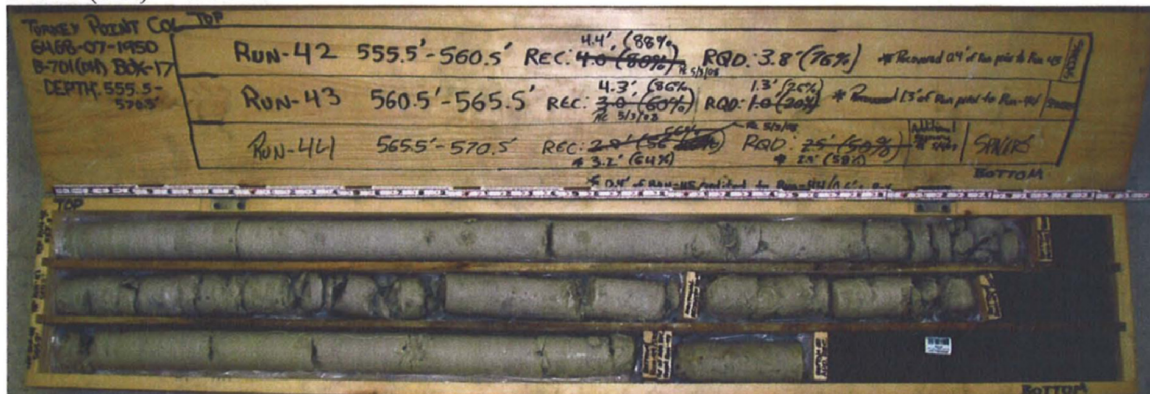


B-B-701 (DH) - Box 15

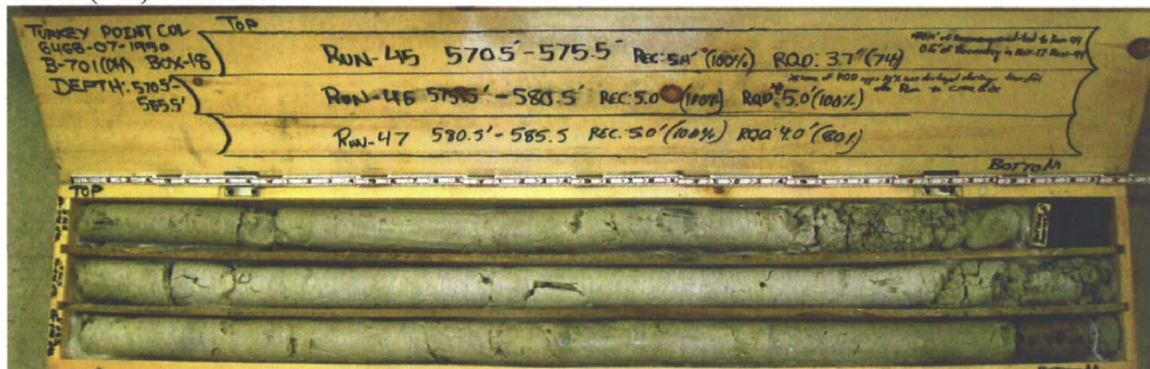


Corrections: Run 40, REC 3.7'(74%), RQD 1.6'(32%)
Run 41, REC 5.0'(100%), RQD 4.1'(8.2%)
JPH. 8-18-08

B-701 (DH) - Box 16



B-701 (DH) - Box 17



B-701 (DH) - Box 18



B-701 (DH) - Box 19



Corrections: Run 53, REC 2.0' (100%), RQD 1.6' (80%)
Run 54, REC 3.0' (100%), RQD 3.0' (100%) JPH, 8-18-08

B-701 (DH) - Box 20



BECHTEL PROJECT NO.: 25409		MACTEC PROJECT NO.: 6468-07-1950		COUNTY: Miami-Dade		GEOLOGIST: J. Liles								
SITE DESCRIPTION: Turkey Point COL		DRILL MACHINE: CME-550 (Miller)		DRILLER: R. White/ J. Dugger/ C. White		GROUND WATER (ft)								
BORING NO.: B-702		DRILL METHOD: Mud Rotary/ Core		SAMPLE METHODS: SPT/Core		0 HR. NA								
GROUND ELEV.: -1.2 ft (NAVD88)		NORTHING: 397,018 US ft (NAD83/90)		EASTING: 875,746 US ft (NAD83/90)		24 HR. NA								
TOTAL DEPTH: 202.5 ft		BORING DIAMETER: 4" to 25.0', 3" to 202.5'		CASING DEPTH: 4" to 25.0', 3" to 122.9'		HAMMER (ID): 140 lb. Auto (M06)								
DATE STARTED: 2/26/08		COMPLETED: 3/6/08		CORE SIZE: HQ3		BITS USED: 2 7/8" Roller Cone								
ELEV. (ft)	DEPTH (ft)	BLOW COUNT			BLOWS PER FOOT					SAMP. NO.	LOG	SOIL AND ROCK DESCRIPTION		
		0.5ft	0.5ft	0.5ft	0	20	40	60	80				100	
-1.2					Ground Surface							-1.2	0.0	
-1.2	0.0	WOH	WOH	WOH							702-1			MUCK, very dark grayish brown (10YR3/2), very soft, wet, strong HCl reaction, fibrous
-3.8	2.6										702-2A&B			
-6.3	5.1	WOH	WOH	2							702-3			Clayey SAND (SC), light brownish gray (2.5Y2), very loose, wet, fine to medium grained sand, strong HCl reaction, organics, little limestone fragments
-8.6	7.4	4	5	3							702-4			LIMESTONE, boundstone, pale yellow (2.5Y8/2), very soft, wet, strong HCl reaction, trace sand, fossiliferous, oolitic (Miami Formation)
-10.6	9.4	34	21	5							702-5			7.4ft: soft
-13.5	12.3	2	5	5							702-6			9.4ft: white (2.5Y8/1), very soft
-15.9	14.7	8	33	20							702-7			12.3ft: moderately hard
		2	14	12										14.7ft: soft, trace clay
-22.2	21.0	1	1	3							702-8			21.0ft: very soft
-27.2	26.0	2	10	18							702-9			LIMESTONE, boundstone, white (2.5Y8/1), soft, wet, strong HCl reaction, trace sand (Upper Fort Thompson Formation)
-32.2	31.0	5	10	11							702-10			POORLY GRADED SAND with silt (SP-SM), light gray (5Y7/2), medium dense, wet, fine to coarse grained sand, fine gravel, few fines, strong HCl reaction, transitions to limestone at 35.8ft
-36.0	34.8	6	13	50/0.1							702-11			Field notes do not indicate that 702-11 was split into separate jars
-37.1	35.9										RUN-1			35.9ft: Switch sample method to coring
-40.1	38.9										RUN-2			LIMESTONE, boundstone, white (2.5Y8/1), hard, extremely indurated, strong HCl reaction, coralline, few vugs
-45.1	43.9										RUN-3			38.9ft: trace shell fragments, fossiliferous
-50.1	48.9										RUN-4			42.0ft: loss of circulation
-55.1	53.9										RUN-5			43.9ft: light gray (10YR7/1) to 47.4ft
-60.1	58.9										RUN-6			47.4ft: LIMESTONE, boundstone, white (2.5Y8/1), hard, extremely indurated, fossiliferous, some vugs, strong HCl reaction (Lower Fort Thompson Formation)
-65.1	63.9										RUN-7			53.9ft: medium hard to moderately hard, moderately indurated to indurated, trace vugs
-70.1	68.9										RUN-8			54.0 to 55.0ft: soft zone
-75.1	73.9										RUN-9			58.9ft: moderately hard, moderately indurated, little vugs
											702-CS-01			63.9ft: light gray (5Y7/1), hard, indurated, few vugs
											702-CS-02			65.0 to 69.0ft: soft zone
											RUN-9			68.9ft: white (2.5Y8/1), moderately hard, some vugs

TURKEY POINT COL BORE TURKEY POINT GPJ TURKEY POINT COL.GDT 5/30/08