


**LEGEND**

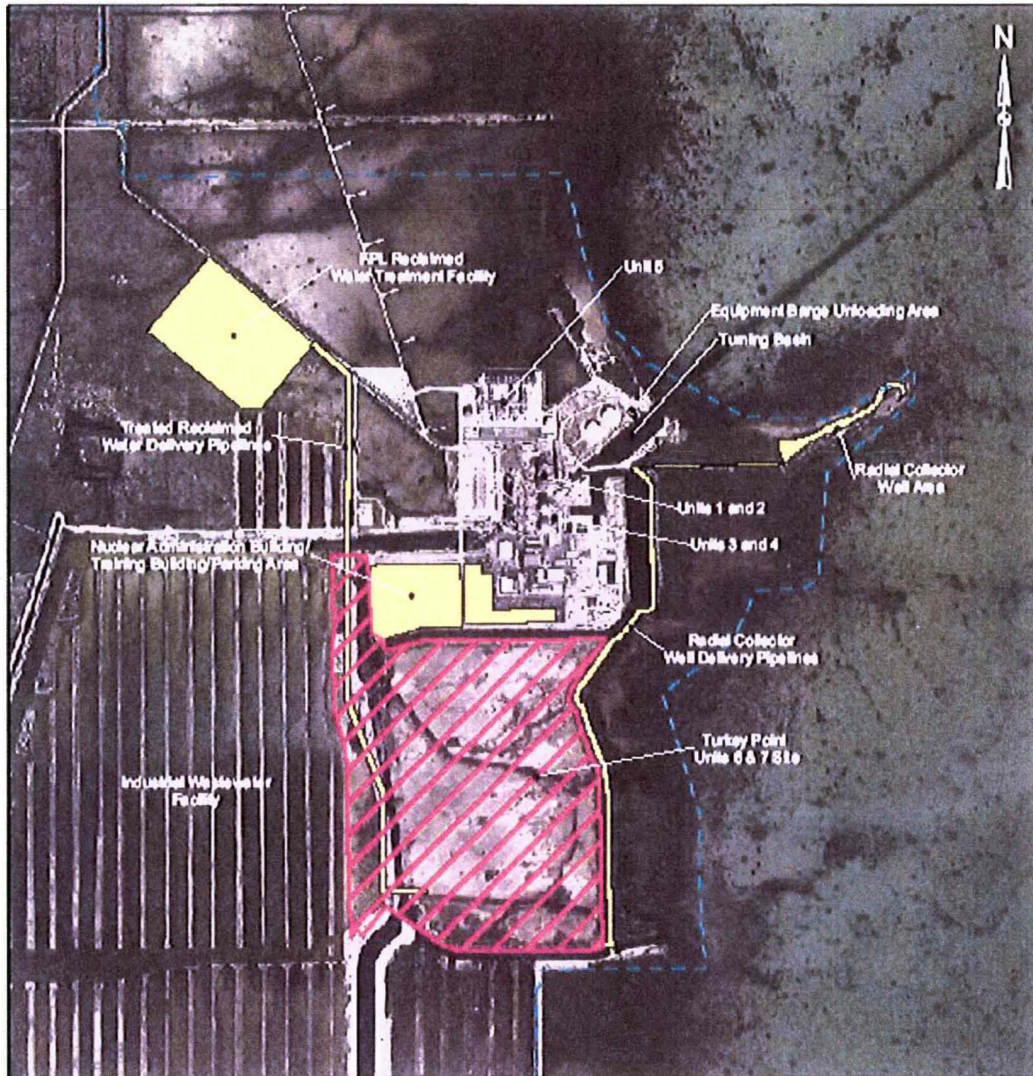
- ★ Turkey Point Units 6 & 7
- ▭ Turkey Point Plant Property
- ▭ Municipal Boundaries



**REFERENCES**

\* Local City Boundaries: Municipal Elections, Major Roads, Miami-Dade County GIS, 2016

PROJECT	TURKEY POINT UNITS 6 & 7 PROJECT	
TITLE	LOCATION OF TURKEY POINT PLANT	
	FILE NO.	00-0704-004
	REV.	0
	EFFECTIVE DATE	06/20/09
		FIGURE 1



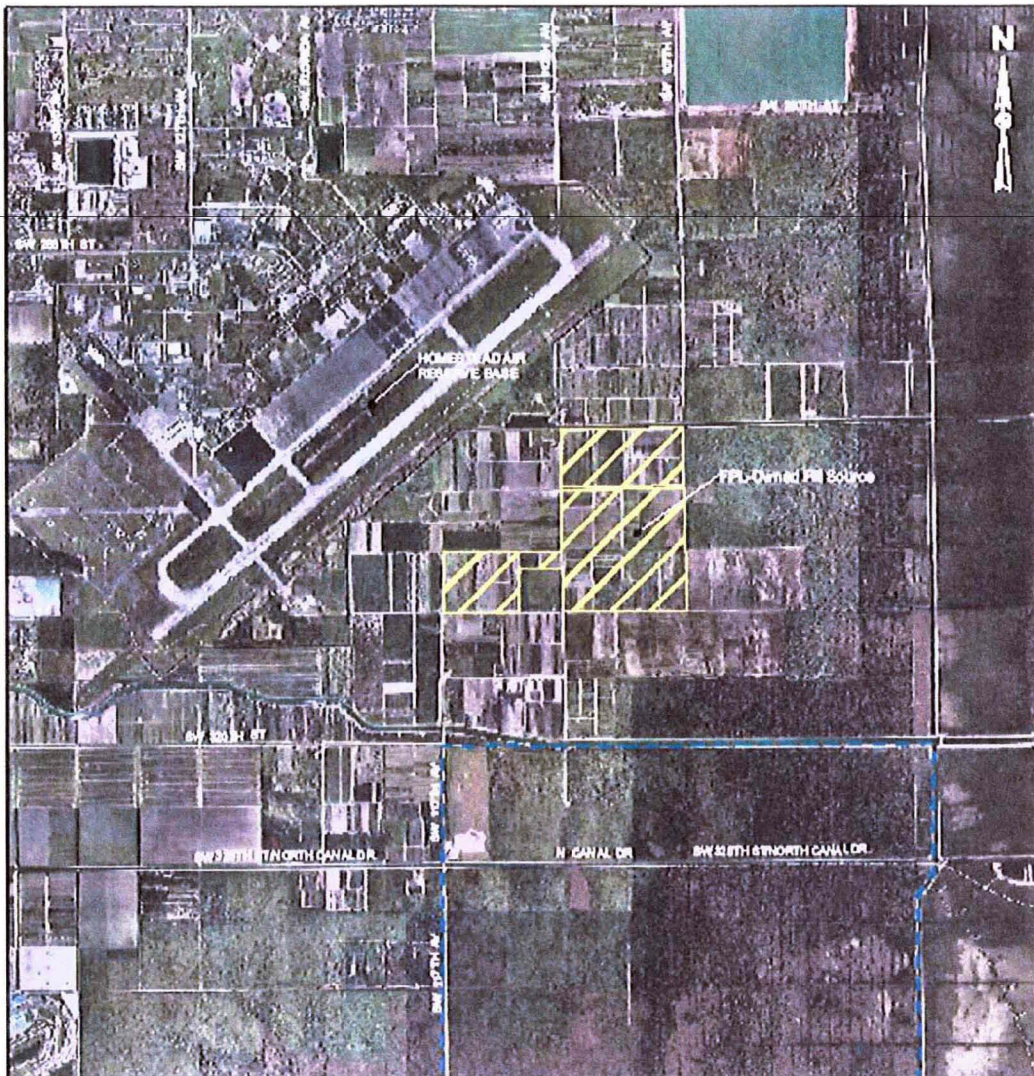
**LEGEND**

- Turkey Point Plant Property
- Turkey Point Units 6 & 7 Site
- Associated Non-Linear Facilities

**REFERENCES**

\* Turkey Merit/Dash County 2007

<b>PROJECT</b>	TURKEY POINT UNITS 6 & 7 PROJECT	
<b>TITLE</b>	SITE AND ASSOCIATED NON-LINEAR FACILITIES ON TURKEY POINT PLANT PROPERTY	
	FILE NO. 000704008	<b>FIGURE</b> 2
	REV. 0	
	EFFECTIVE 08/2008	




**LEGEND**

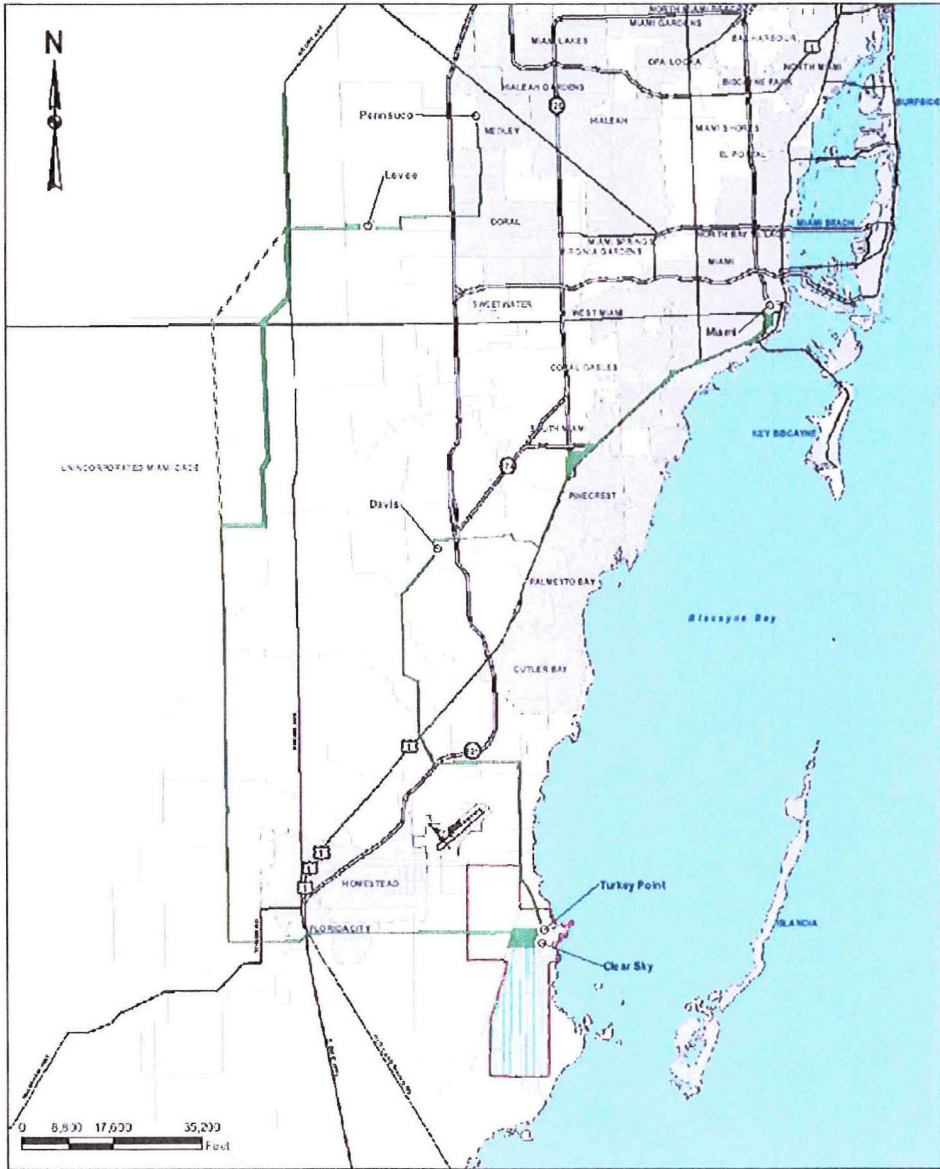
- Turkey Point Plant Property
- Associated Non-Linear Facilities



**REFERENCES**

1. Ingey Marsh & Co. 2007

<b>PROJECT</b>	TURKEY POINT UNITS 6 & 7 PROJECT	
<b>TRF</b>	ASSOCIATED NON-LINEAR FACILITIES FPL-OWNED FILL SOURCE	
	FILED: 06/22/2009	<b>FIGURE</b> 3
	REV: 0	
	PLOTTED: 06/22/09	

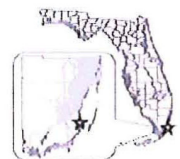


**LEGEND**

- FPL Substations
- ▬ Associated Linear Facilities - Transmission Lines and Comdors
- ▬ Secondary Comdor
- ▭ Turkey Point Plant Property

**REFERENCES**

1. Map of Dade County, Florida, 1974, Metropolitan Dade County, 1978

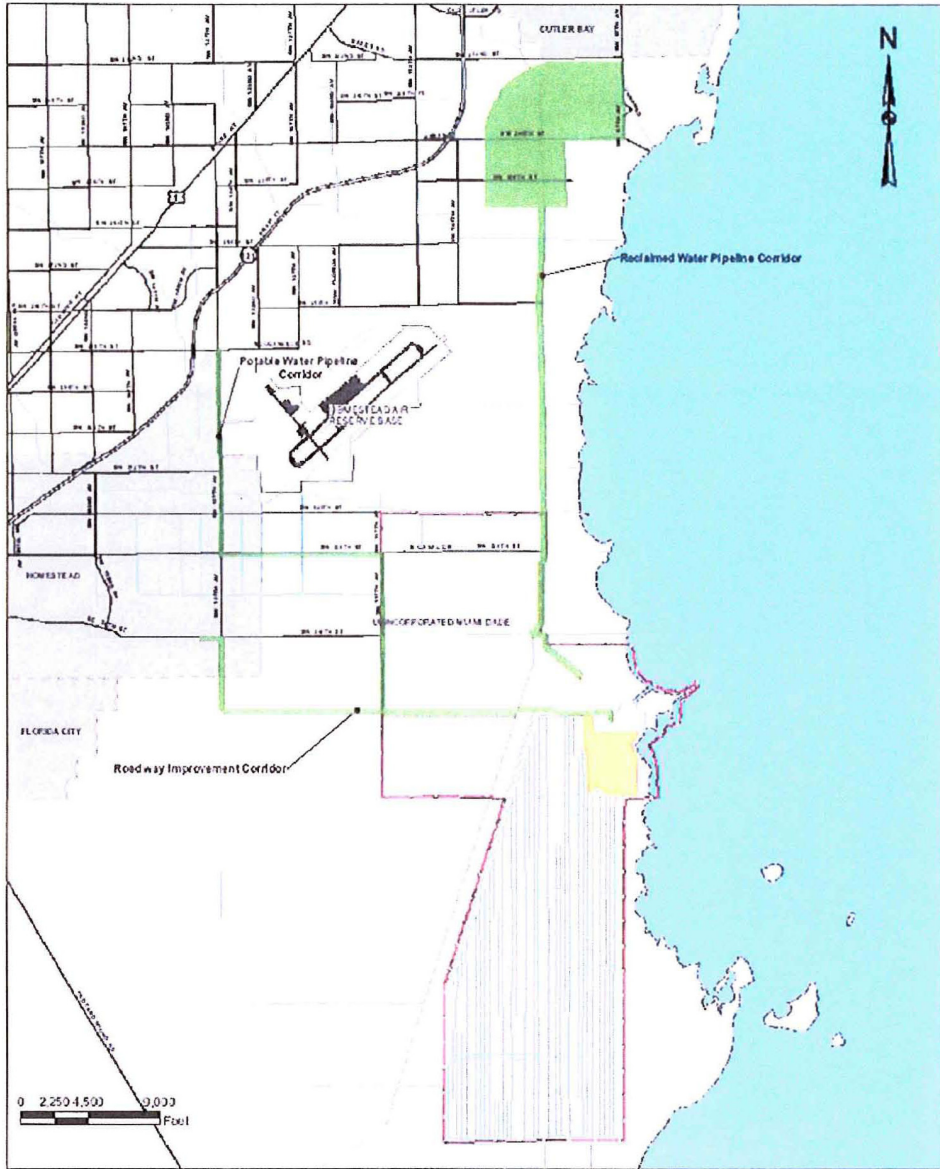


**FIGURE**  
4

ASSOCIATED LINEAR FACILITIES  
TRANSMISSION

TURKEY POINT UNITS 6 & 7  
PROJECT



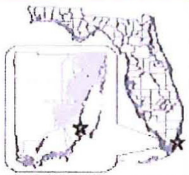


**LEGEND**

- Turkey Point Units 6 & 7 Site
- Associated Linear Facilities - Corridors
- Turkey Point Plant Property

**REFERENCES**

1. Map of Broward, Col. & Polk, Map of the Metropolitan County of Dade



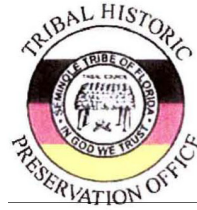
<b>FIGURE</b> 5	<p><b>TITLE</b></p> <p><b>ASSOCIATED LINEAR FACILITIES: RECLAIMED WATER PIPELINES, ROADWAY IMPROVEMENTS, &amp; POTABLE WATER PIPELINES</b></p>	<p><b>PROJECT</b></p> <p><b>TURKEY POINT UNITS 6 &amp; 7 PROJECT</b></p>
--------------------	--	--



SEMINOLE TRIBE OF FLORIDA  
TRIBAL HISTORIC PRESERVATION OFFICE

---

TRIBAL HISTORIC  
PRESERVATION OFFICE  
SEMINOLE TRIBE OF FLORIDA  
AH-TAH-THI-KI MUSEUM  
HC-61, BOX 21A  
CLEWISTON, FL 33440  
PHONE: (863) 983-6549  
FAX: (863) 902-1117



TRIBAL OFFICERS  
CHAIRMAN  
MITCHELL CYPRESS  
VICE CHAIRMAN  
RICHARD BOWERS JR.  
SECRETARY  
PRISCILLA D. SAYEN  
TREASURER  
MICHAEL D. TIGER

Florida Power and Light Company  
700 Universe Boulevard  
Juno Beach, FL 33408-2683  
Attn: Matthew Raffenberg

THPO #: 005028

December 22, 2009

**Subject:** Proposed Turkey Point Units 6 & On-site Project Facilities, Miami-Dade County, Florida

To Whom It May Concern:

The Seminole Tribe of Florida Tribal Historic Preservation Office (STOF-THPO) has received the **Florida Power and Light Company's** correspondence concerning the aforementioned project. The STOF-THPO has no objection to your findings at this time. However, the STOF-THPO would like to be informed if cultural resources that are potentially ancestral or historically relevant to the Seminole Tribe of Florida are inadvertently discovered during the construction process. We thank you for the opportunity to review the information that has been sent to date regarding this project. Please reference to **THPO-005028** for any related issues.

We look forward to working with you in the future.

Sincerely,

**Direct routine inquiries to:**

Willard Steele,  
Tribal Historic Preservation Officer  
Seminole Tribe of Florida

Anne Mullins  
Compliance Review Supervisor  
annemullins@semtribe.com