

## PMFermiCOLPEm Resource

---

**From:** Govan, Tekia  
**Sent:** Thursday, November 21, 2013 4:20 PM  
**To:** FermiCOL Resource  
**Subject:** FW: Scanned Package Given to Staff (Part 5 of 6)  
**Attachments:** Audited Materials 11-21-2013 - Part 5.pdf

---

**From:** Michael K Brandon [<mailto:brandonm@dteenergy.com>]  
**Sent:** Thursday, November 21, 2013 4:15 PM  
**To:** Govan, Tekia  
**Subject:** Fwd: Scanned Package Given to Staff (Part 5 of 6)

>  
> - Audited Materials 11-21-2013 - Part 5.pdf

**Hearing Identifier:** Fermi\_COL\_Public  
**Email Number:** 1293

**Mail Envelope Properties** (F5A4366DF596BF458646C9D433EA37D701541FAE2F4F)

**Subject:** FW: Scanned Package Given to Staff (Part 5 of 6)  
**Sent Date:** 11/21/2013 4:19:49 PM  
**Received Date:** 11/21/2013 4:21:59 PM  
**From:** Govan, Tekia

**Created By:** Tekia.Govan@nrc.gov

**Recipients:**  
"FermiCOL Resource" <FermiCOL.Resource@nrc.gov>  
Tracking Status: None

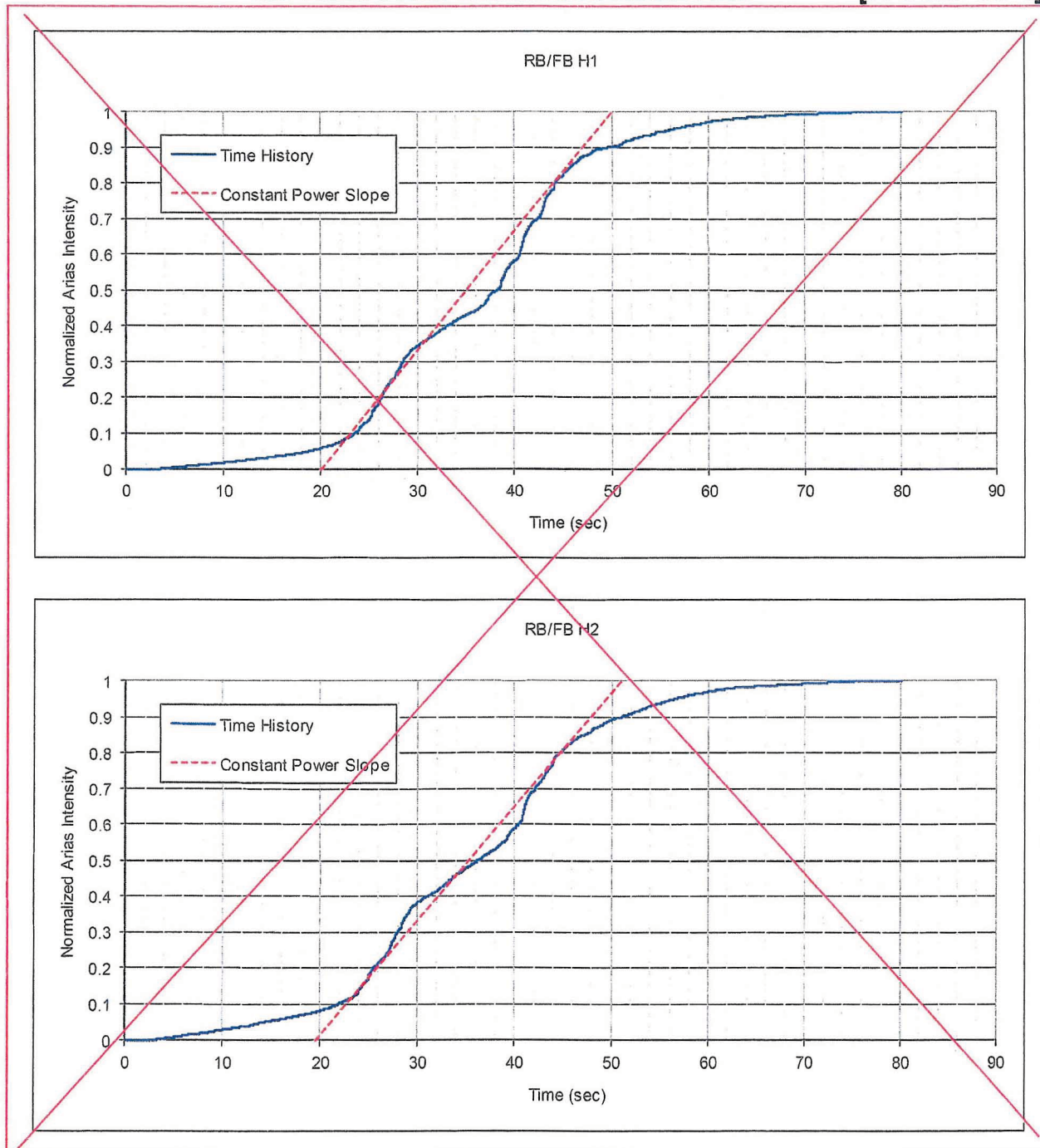
**Post Office:** HQCLSTR01.nrc.gov

<b>Files</b>	<b>Size</b>	<b>Date &amp; Time</b>
MESSAGE	253	11/21/2013 4:21:59 PM
Audited Materials 11-21-2013 - Part 5.pdf		2910983

**Options**  
**Priority:** Standard  
**Return Notification:** No  
**Reply Requested:** No  
**Sensitivity:** Normal  
**Expiration Date:**  
**Recipients Received:**

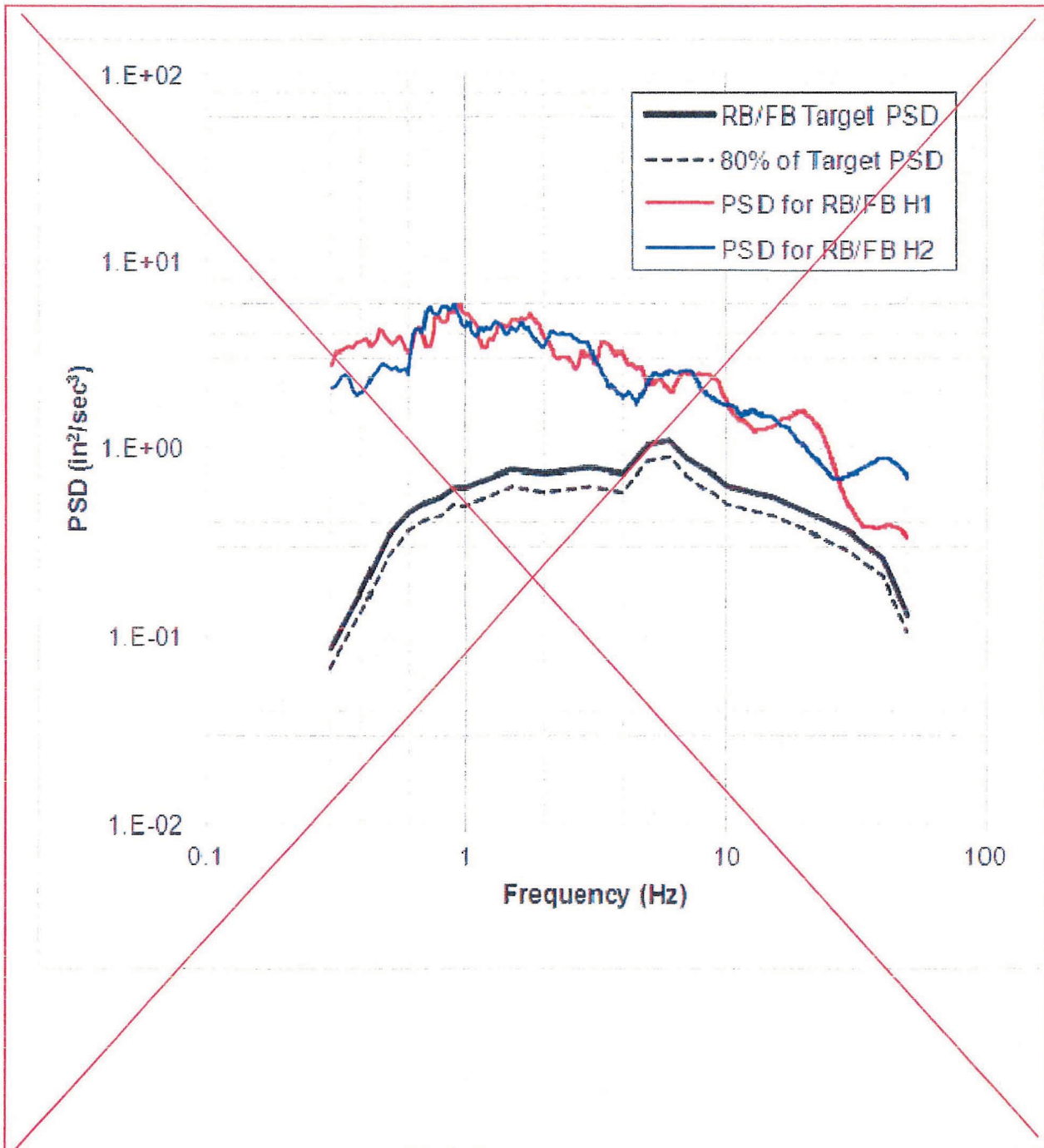
Insert Figure 3.7.1-251 to Figure 3.7.1-255

**Figure 3.7.1-251** ~~Slope of Near Constant Power used to Estimate Durations of 30 and 31.5 Seconds for Calculating the PSD for the Spectrally Matched Horizontal (H1 and H2) Components Compatible with the Fermi 3 RB/FB Enhanced SCOR FIRS~~ [EF3 SUP 3.7-1]



**Figure 3.7.1-252** ~~PSD for Spectrally Matched Time History Components (H1 and H2) Compatible with the Fermi 3 RB/FB Enhanced SCOR FIRS and Target PSD Based on Appendix B of SRP 3.7.1~~

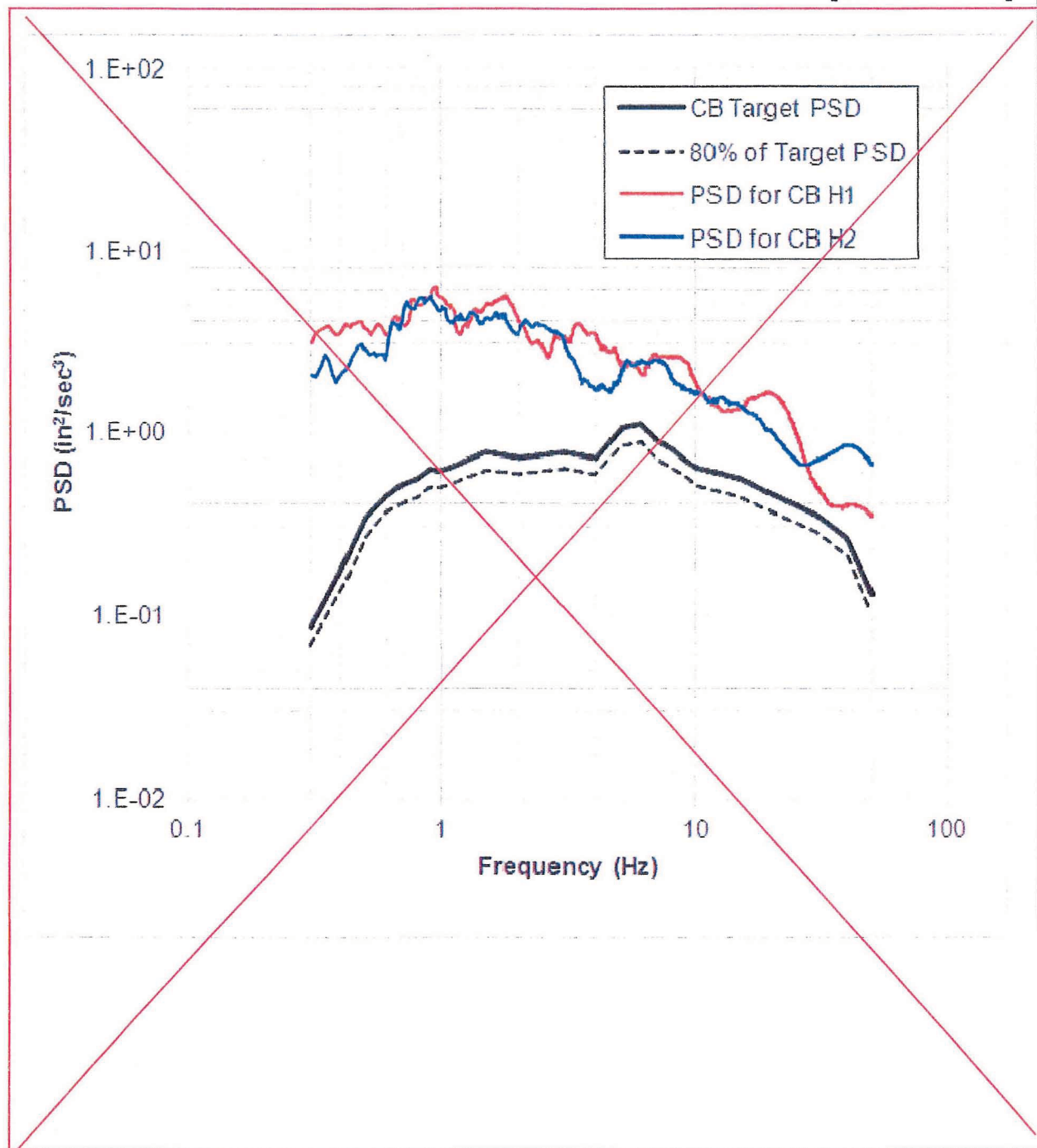
[EF3 SUP 3.7-1]





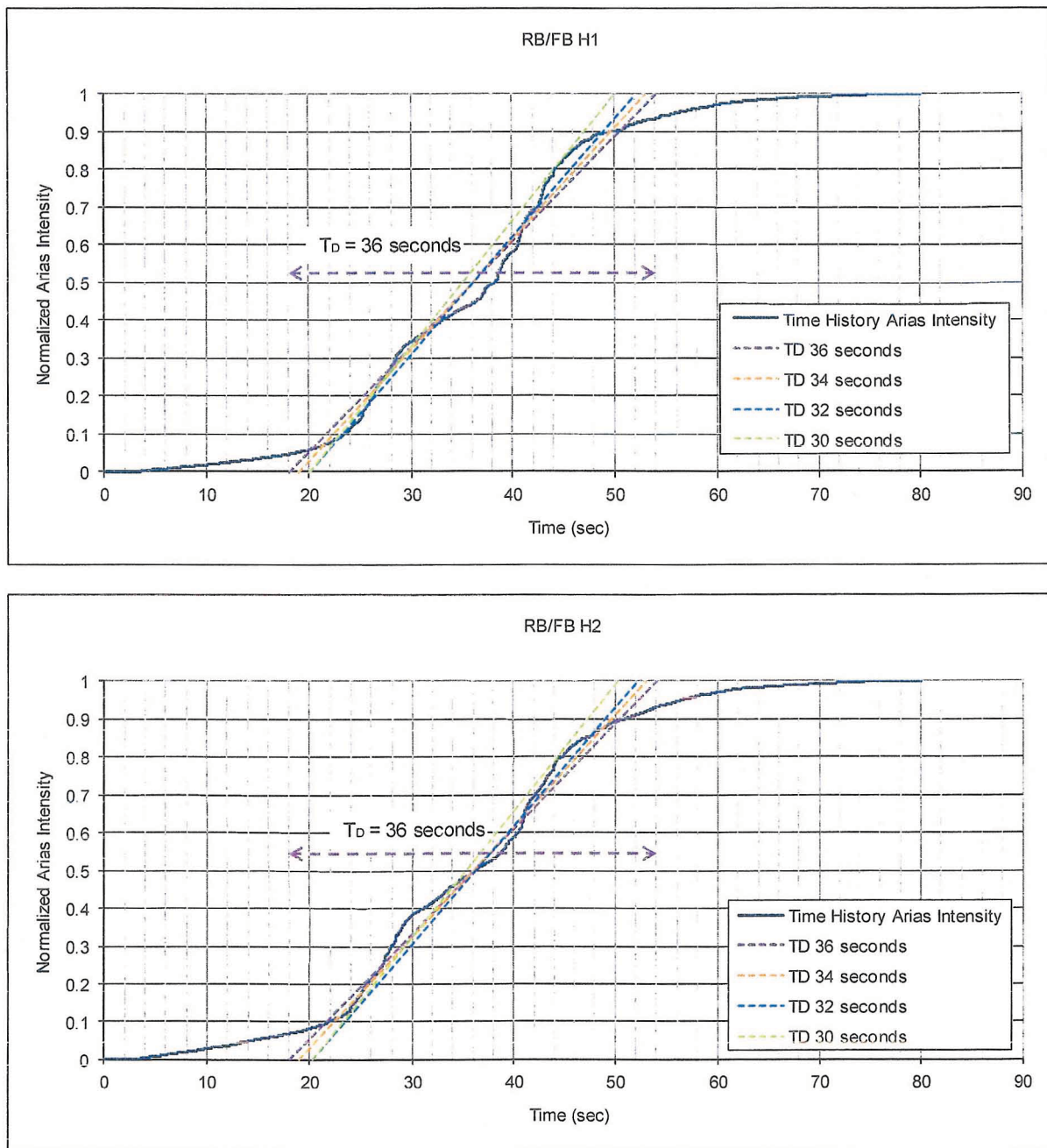
~~Figure 3.7.1-253 PSD for Spectrally Matched Time History Components (H1 and H2) Compatible with the Fermi 3 CBEnhanced SCOR FIRS and Target PSD Based on Appendix B of SRP 3.7.1~~

[EF3 SUP 3.7-1]



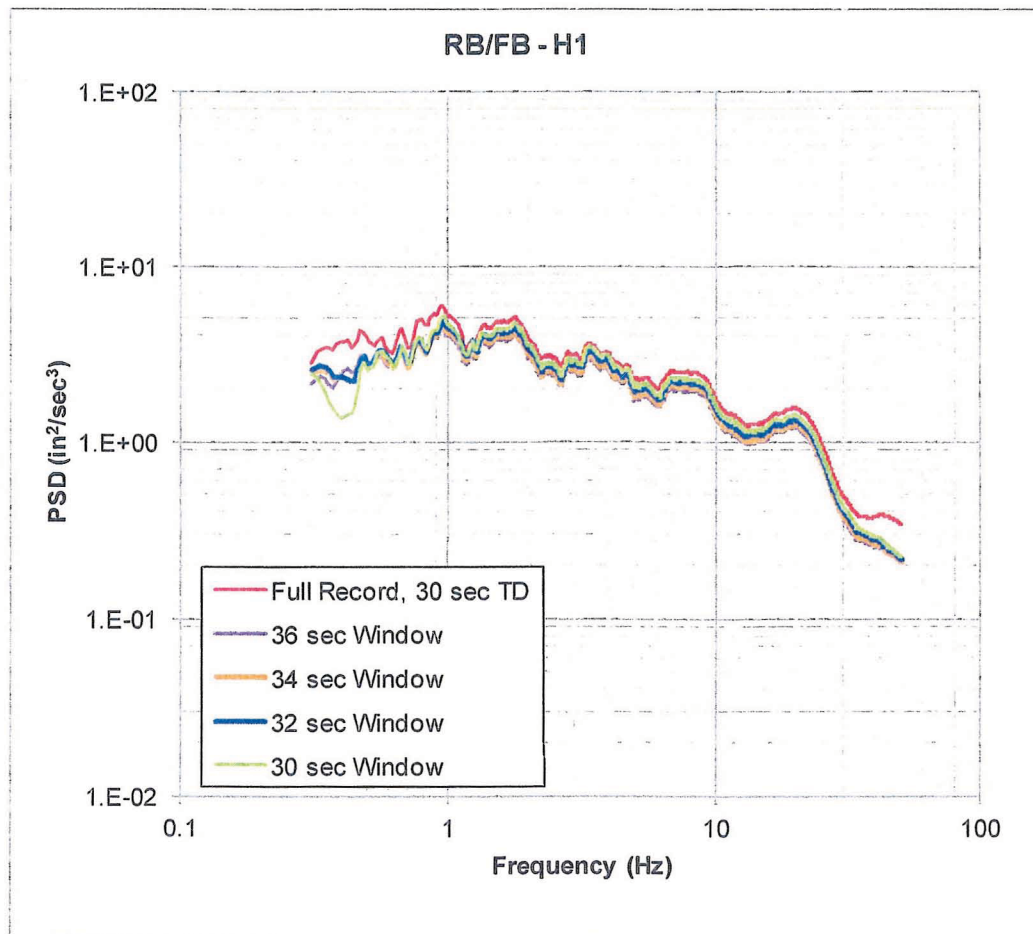
Insert Figure 3.7.1-251 to Figure 3.7.1-255

Figure 3.7.1-251 Normalized Arias Intensity and Estimates of Equivalent Stationary Duration for Calculating the PSD for the Spectrally Matched Horizontal (H1 and H2) Components Compatible with the Fermi 3 RB/FB Enhanced SCOR FIRS



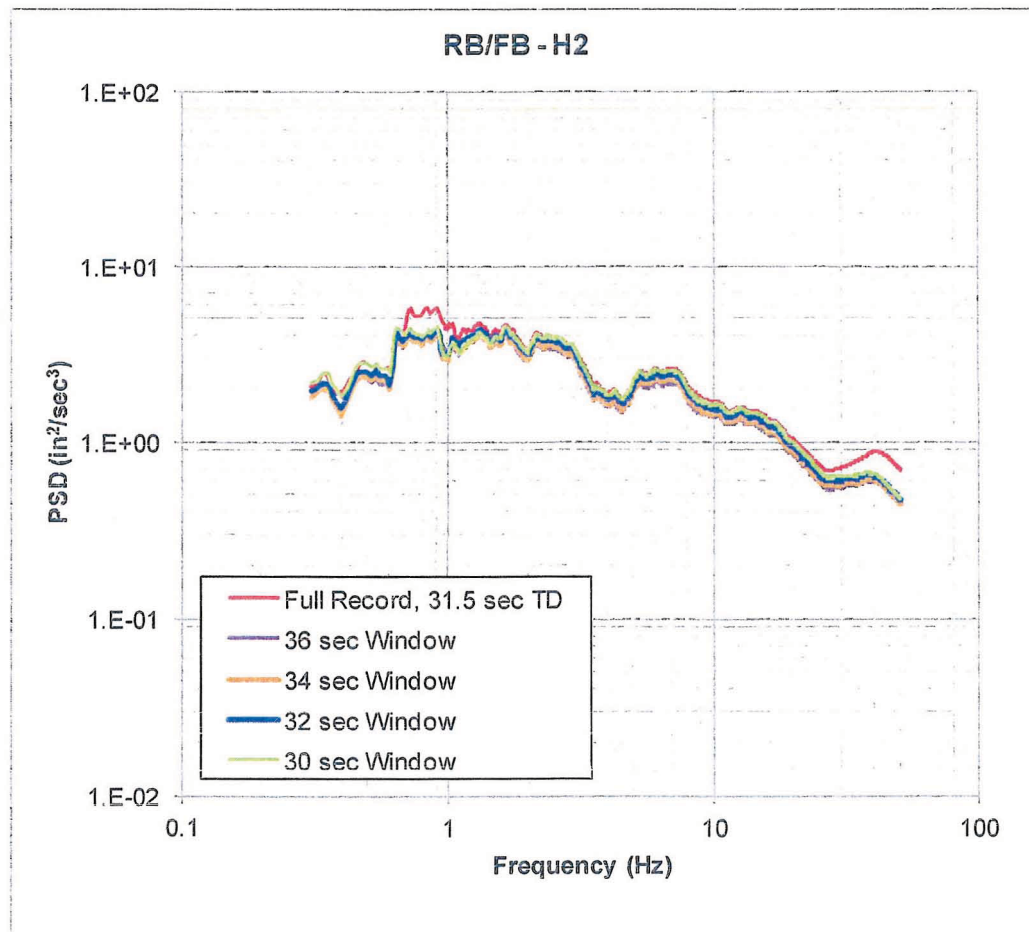
Insert Figure 3.7.1-251 to Figure 3.7.1-255  
(Continued)

Figure 3.7.1-252 PSD Computed for the RB/FB H1 Component Spectrally Matched Time History (Enhanced SCOR FIRS) Using Full Duration Time Histories and Time Histories Windowed to an Equivalent Stationary Duration,  $T_D$



Insert Figure 3.7.1-251 to Figure 3.7.1-255  
(Continued)

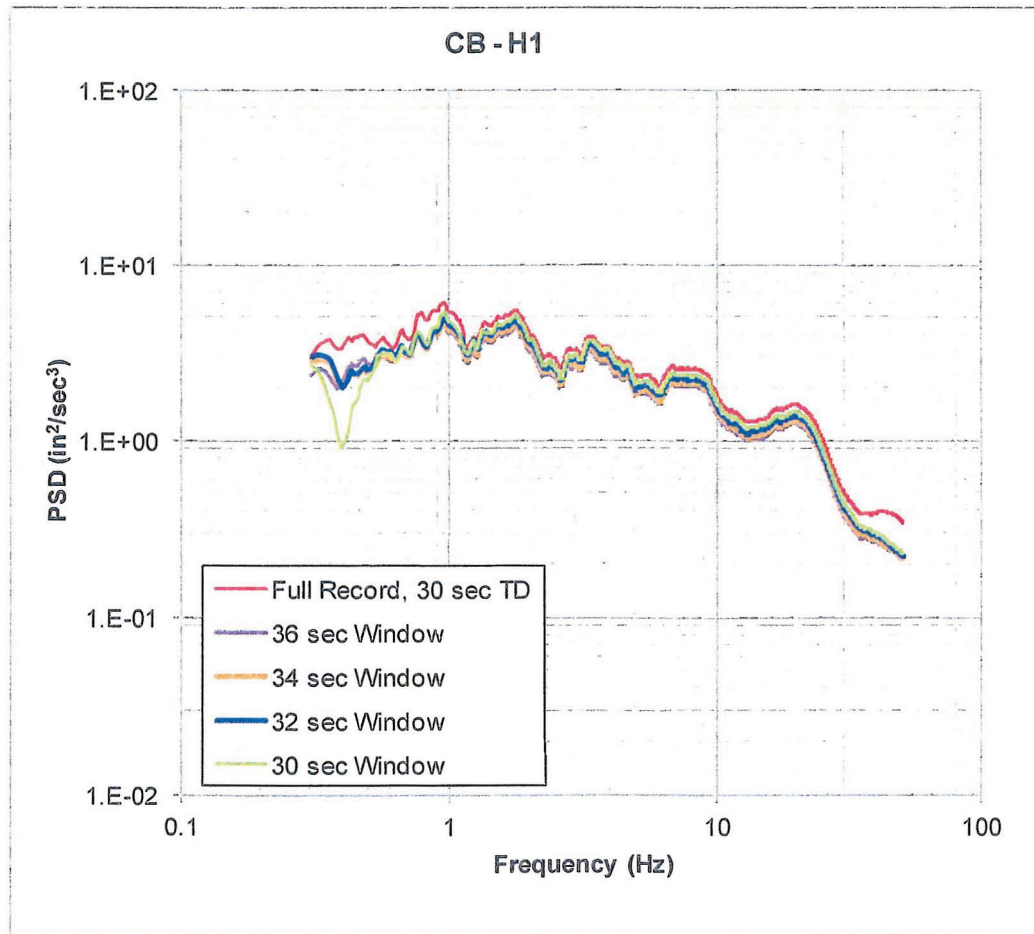
Figure 3.7.1-253 PSD Computed for the RB/FB H2 Component Spectrally Matched Time History (Enhanced SCOR FIRS) Using Full Duration Time Histories and Time Histories Windowed to an Equivalent Stationary Duration,  $T_D$





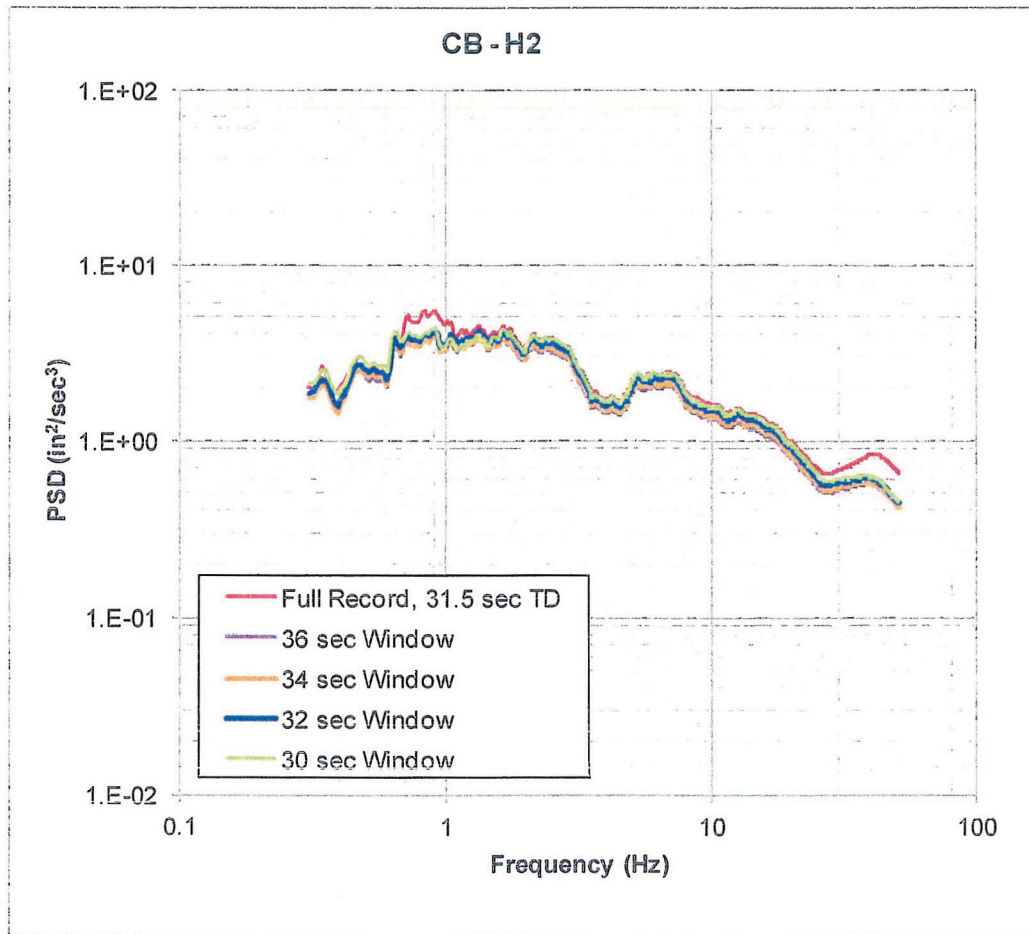
Insert Figure 3.7.1-251 to Figure 3.7.1-255  
(Continued)

Figure 3.7.1-254 PSD Computed for the CB H1 Component Spectrally Matched Time History (Enhanced SCOR FIRS) Using Full Duration Time Histories and Time Histories Windowed to an Equivalent Stationary Duration,  $T_D$



Insert Figure 3.7.1-251 to Figure 3.7.1-255  
(Continued)

Figure 3.7.1-255 PSD Computed for the CB H1 Component Spectrally Matched Time History (Enhanced SCOR FIRS) Using Full Duration Time Histories and Time Histories Windowed to an Equivalent Stationary Duration,  $T_D$





256

Figure 3.7.1-254 Power Spectra and Cumulative Power Plots for the Horizontal In-Column Acceleration Time Histories (H1 and H2) Compatible with the BE Deterministic Profile without Engineered Granular Backfill above the Top of the Bass Islands Group Bedrock [EF3 SUP 3.7-1]

