

Comanche Peak Nuclear Power Plant, Units 3 & 4
COL Application
Part 2, FSAR

Comanche Peak COL - CPUP FIRS4 Analysis
Spectral Acceleration (g) at depth(ft)= 0.0 - outcrop (DCD TH
Duration) (GWL 795 ft)

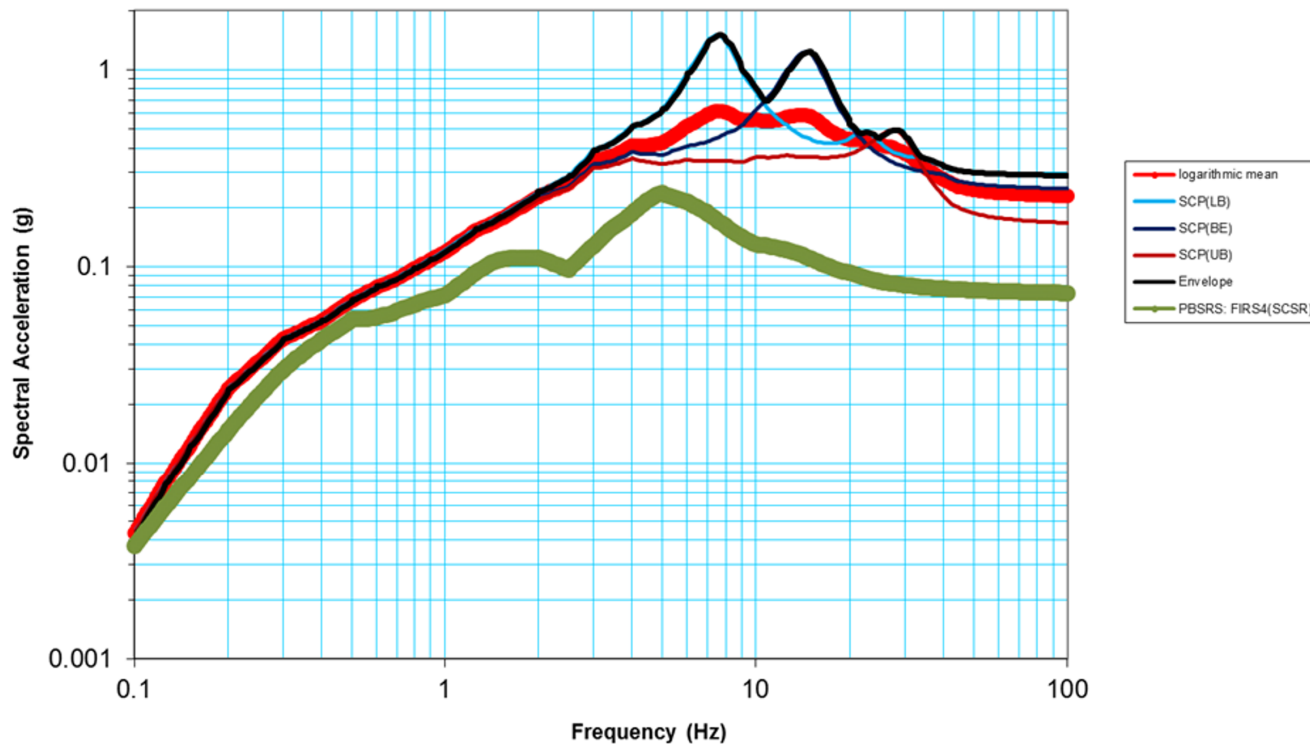


Figure 2.5.2-276 Comparison of envelope of spectral accelerations of the surface response spectra for LB, BE, and UB and the corresponding PBSRS, FIRS4, CPUP, DCD time history duration, saturated granular fill below nominal GWL 795 ft, 5% damping