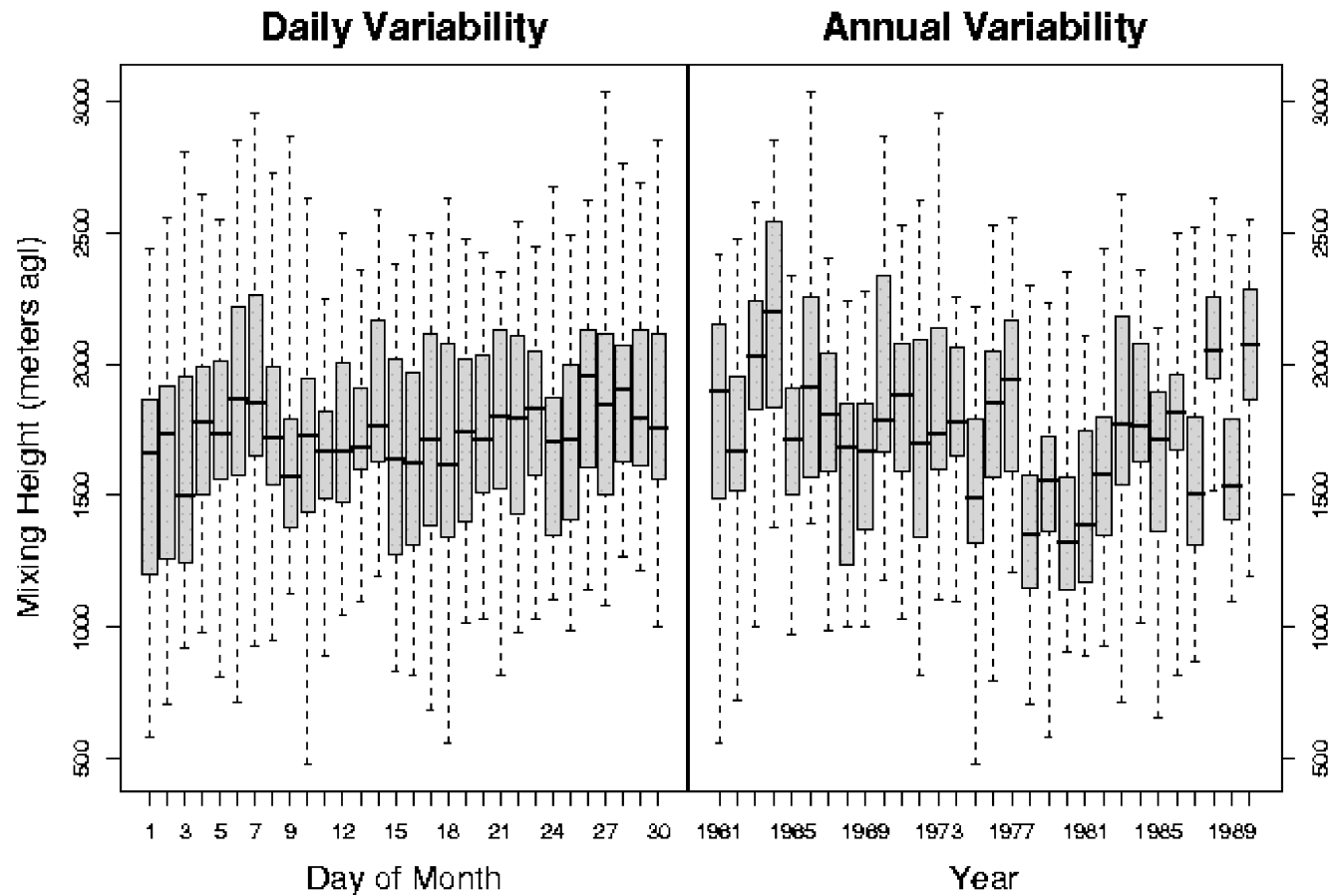


Comanche Peak Nuclear Power Plant, Units 3 & 4  
COL Application  
Part 2, FSAR

Jun, PM – N 32°18.75' W 97°46.25'



Reference: Ventilation Climate Information System, USDO-I-USA Joint Fire Science Program.  
<http://web.airfire.org/vcis>, accessed 9/10/2007.

Figure 2.3-227 June Afternoon Mixing Height at CPNPP