

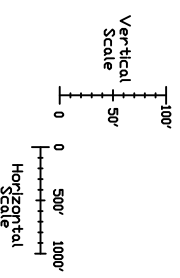
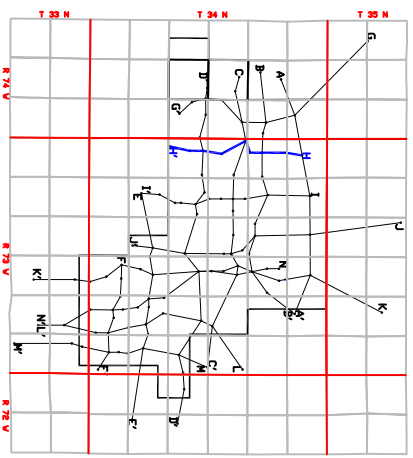
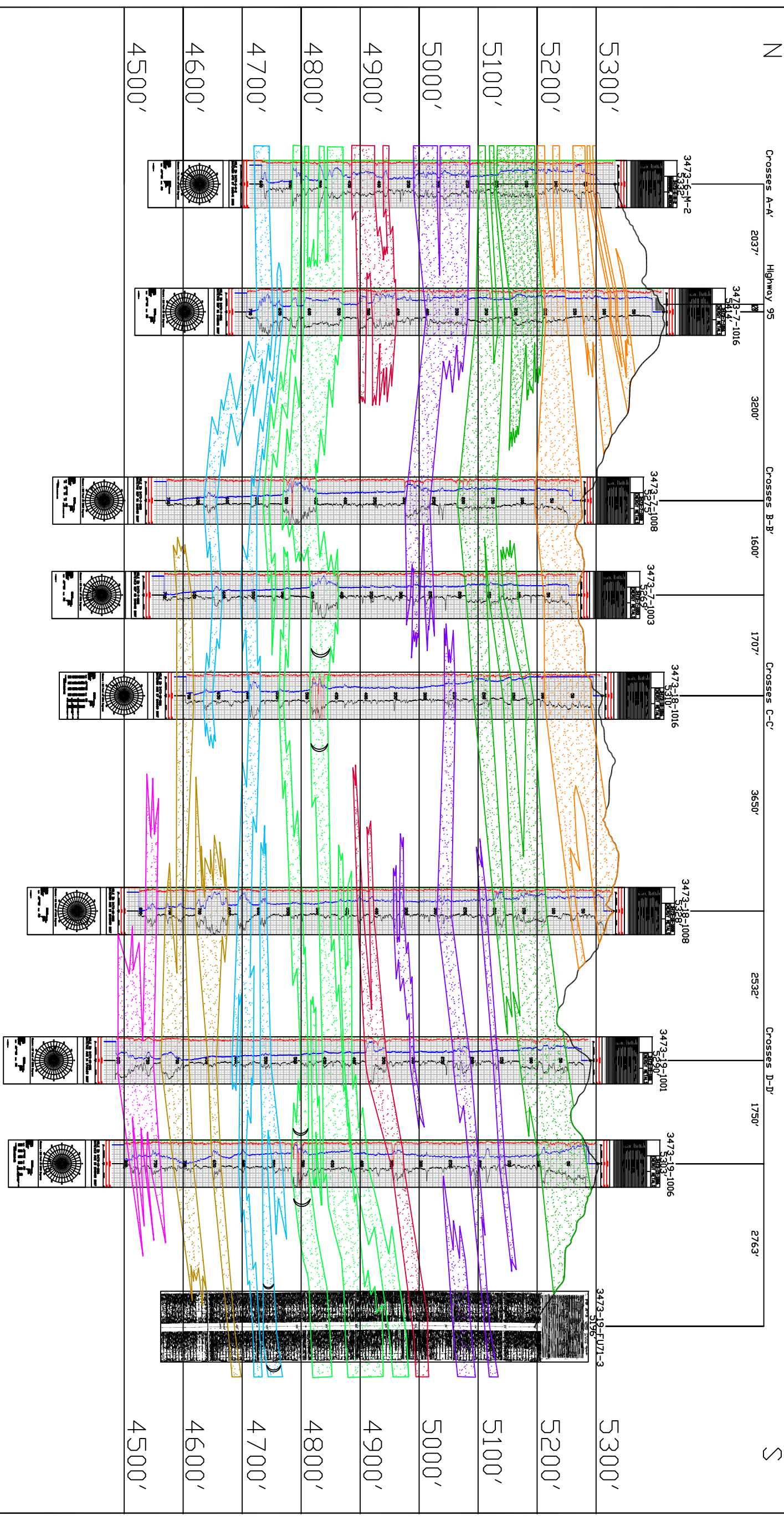
H

3473-6 3473-7

3473-7 3473-18

3473-18 3473-19

S



LEGEND

- 120 SAND
 - 110 SAND
 - 100 SAND
 - 90 SAND
 - 80 SAND
 - 70 SAND
 - 60 SAND
 - 50 SAND
 - ROLL FRONT
 - NTS
- NOT TO SCALE
- LOOKING EAST



907 North Poplar St., Suite 260 Casper, WY 82601 307-234-8235

LUDEMAN PROJECT
CROSS SECTION H-H'

T.34N., R.73W., Sec. 6,7,18,19
CONVERSE COUNTY, WYOMING

Date:	02/09/2009	By:	TC	Checked:	
Rev. No.	1	Description	07/28/2009	By:	TC
					FIGURE:
					3.3-10