

N

S



3574-27 | 3574-34

3574-34 | 3574-35

3574-35 | 3474-2

3474-2 | 3474-1

3474-1 | 3474-12

3474-12 | 3474-13

3474-13 | 3474-14 | 3474-23 | 3474-24

13875'

Crosses A-M

Highway 95

2915'

Crosses B-B'

3191'

Crosses C-C'

4030'

2141'

Crosses D-D'

1894'

2272'

3574-27-NR-23

5415'

3474-1-RR-24

5388'

3474-13-DM-4

5350'

3474-13-M-7

5338'

3474-13-M-9

5325'

3474-23-1118

5255'

3474-24-1464

5216'

3474-24-1513

5216'

5300'

5200'

5100'

5000'

4900'

4800'

4700'

4600'

5300'

5200'

5100'

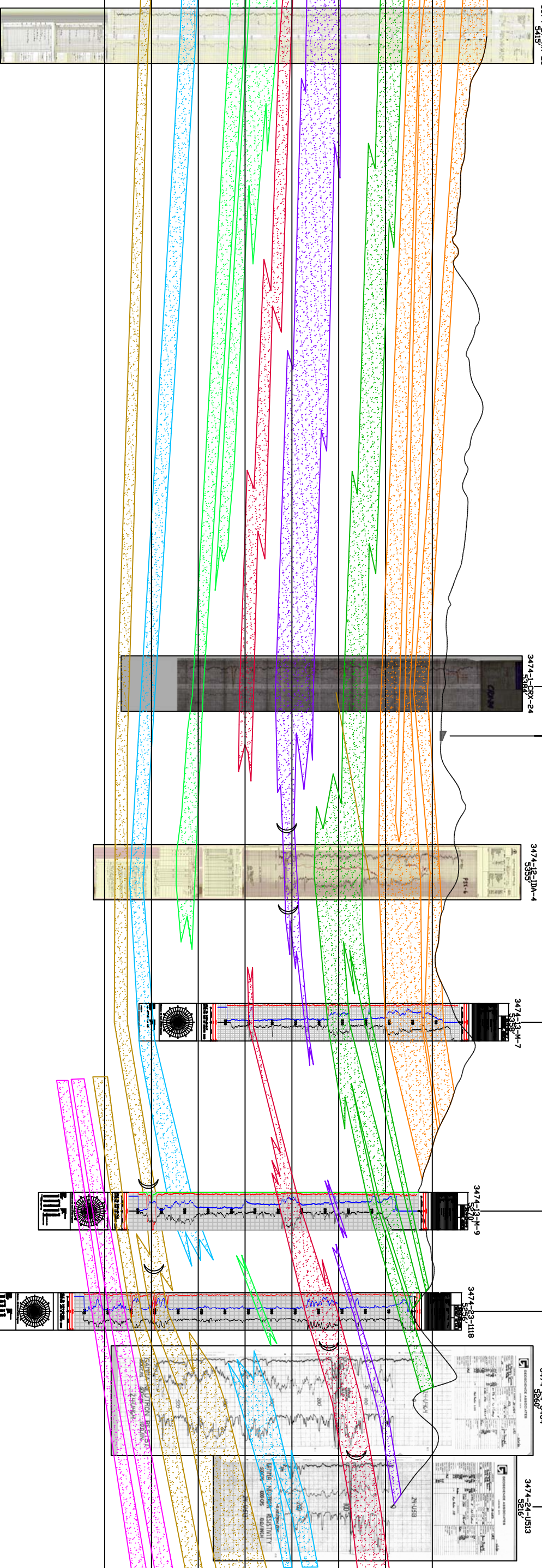
5000'

4900'

4800'

4700'

4600'



LEGEND

- 120 SAND
 - 110 SAND
 - 100 SAND
 - 90 SAND
 - 80 SAND
 - 70 SAND
 - 60 SAND
 - 50 SAND
 - ROLL FRONT
 - NTS
- NOT TO SCALE
- LOOKING EAST



907 North Poplar St., Suite 200, Casper, WY 82601 307-234-8235

LUDEMAN PROJECT
CROSS SECTION G-G'
 T.35N., R.74W., Sec. 27,34,35
 T.34N., R.74W., Sec. 2,1,12,13,14,23,24
 CONVERSE COUNTY, WYOMING

Date:	02/09/2009	By:	TC	Checked:	
Rev. No.	1	Description	07/28/2009	By	TC
					FIGURE:
					2.6-9

