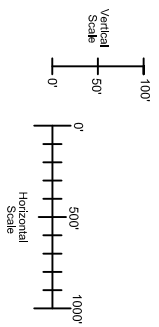
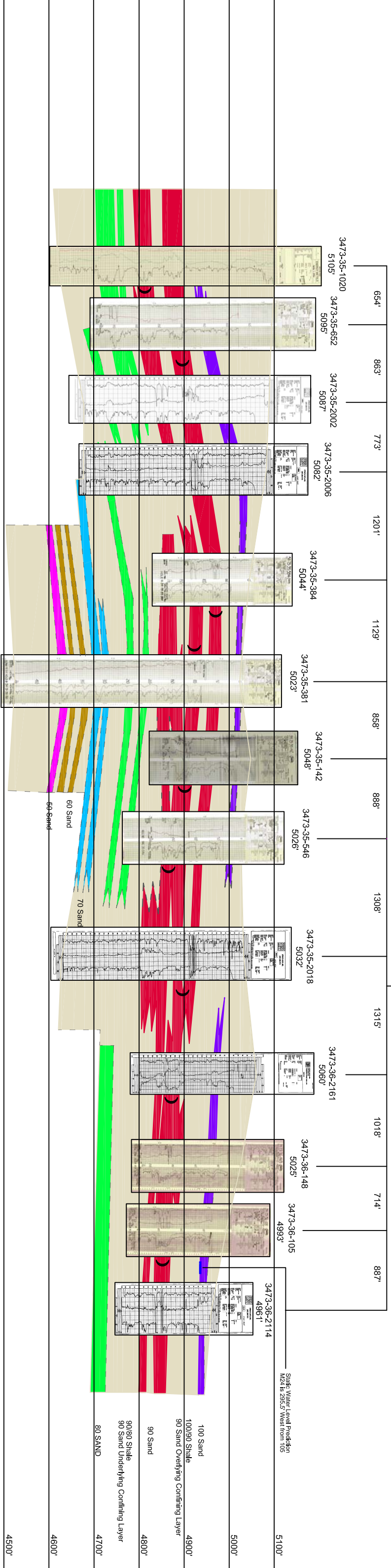


T

T



| | |
|----------------------------|---------------|
| LEGEND | |
| 100 SAND | [Purple bar] |
| 90 SAND | [Red bar] |
| 80 SAND | [Green bar] |
| 70 SAND | [Blue bar] |
| 60 SAND | [Yellow bar] |
| SHALE | [Green bar] |
| Underlined Boundary | [Dashed line] |
| Potentiometric Water Level | [Blue line] |
| Mineralized Zone | [Dashed line] |

| | |
|--|-------------------|
| | |
| 907 North Poplar St., Suite 260, Casper, WY 82601 307-234-8235 | |
| LUDEMAN PROJECT CROSS SECTION T-T' | |
| T.34N., R.73W., Sec. 35, 36 CONVERSE COUNTY, WYOMING | |
| Date: 06/18/2013 | By: _____ |
| Rev. No. _____ | Description _____ |
| Date _____ | By _____ |
| Checked: _____ | FIGURE: _____ |