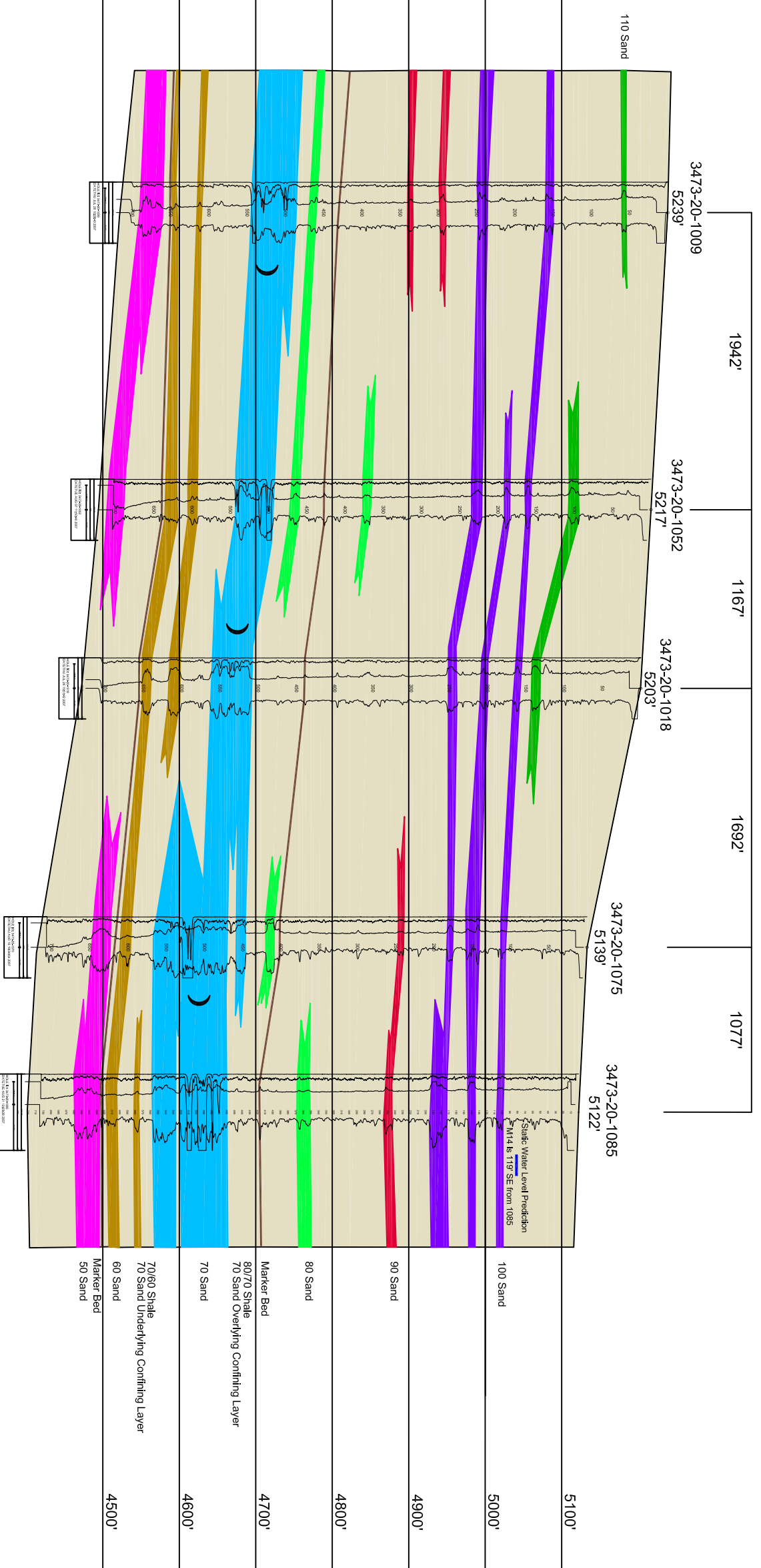


R

R'

T34 R73 Sec. 20



LEGEND

- 110 SAND
- 100 SAND
- 90 SAND
- 80 SAND
- 70 SAND
- 60 SAND
- 50 SAND
- SHALE
- Marker Bed
- Potentiometric Water Level
- Mineralized Zone



907 North Poplar St., Suite 260, Casper, WY 82601 307-234-8235

LUDEMAN PROJECT CROSS SECTION R-R'

T.34N., R.73W., Sec. 20
CONVERSE COUNTY, WYOMING

Date: 06/18/2013 By: _____ Checked: _____

Rev. No. Description Date By: _____

FIGURE: