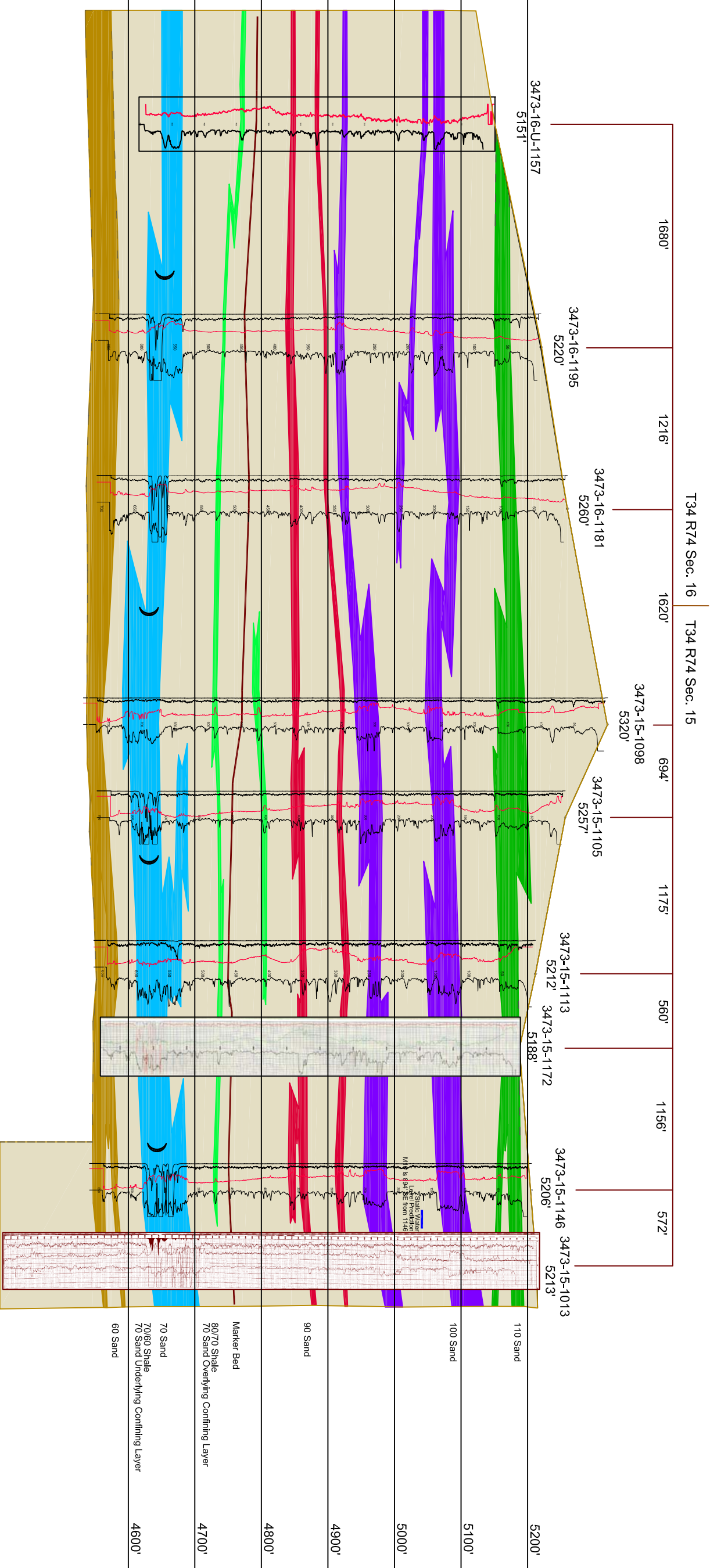


Q

Q'



LEGEND

- 110 SAND
- 100 SAND
- 90 SAND
- 80 SAND
- 70 SAND
- 60 SAND
- SHALE
- Marker Bed
- Undefined Boundary
- Potentiometric Water Level
- Mineralized Zone



LUDEMAN PROJECT

CROSS SECTION Q-Q'

T. 34N., R. 73W., Sec. 16, 15
CONVERSE COUNTY, WYOMING

Date:	06/18/2013	By:		Checked:	
Rev. No.		Description		Date	

FIGURE:

