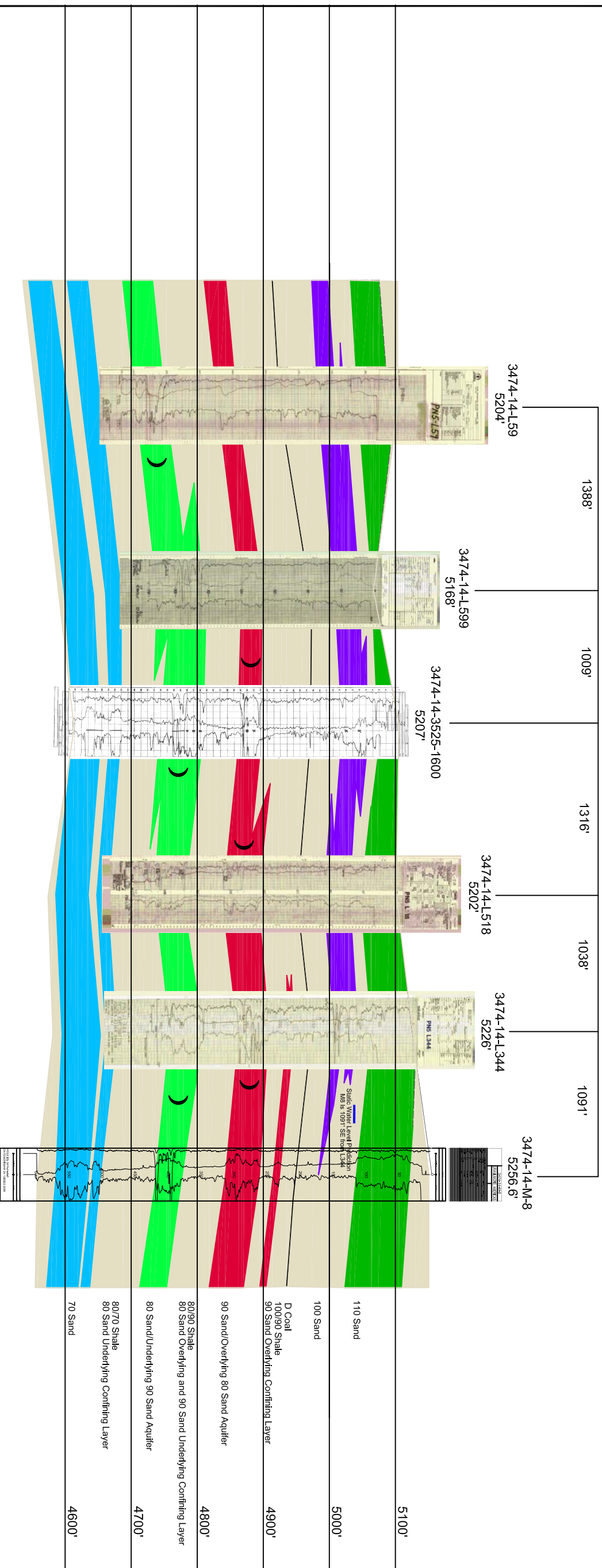




T34 R74 Sec. 14



LEGEND

- 110 SAND
 - 100 SAND
 - 90 SAND
 - 80 SAND
 - 70 SAND
 - SHALE
 - D Coal
 - Underfined Boundary
 - Potentiometric Water Level
 - Mineralized Zone
- Drinking Water Aquifer is Associated with the 110 Sand



907 North Poplar St., Suite 260, Casper, WY 82601 307-234-8235

LUDEMAN PROJECT CROSS SECTION O-O'

T.34N., R.74W., Sec. 14
CONVERSE COUNTY, WYOMING

| | | | | |
|----------|-------------|------|----------|---------|
| Date: | 06/18/2013 | By: | Checked: | FIGURE: |
| Rev. No. | Description | Date | By | |
| | | | | |
| | | | | |

