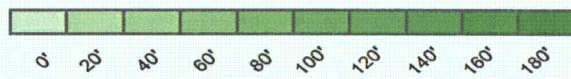
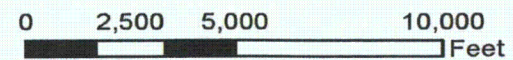


Legend

- + 80_Sand Data Picks
- Permit Boundary
- ▨ Excluded From the Permit Area
- 80_Sand_Projected
- Estimated Well Fields
- Mine Unite Cross Sections
- North to South Cross Sections
- West to East Cross Sections



20' Contour Interval



1 inch = 3,800 feet

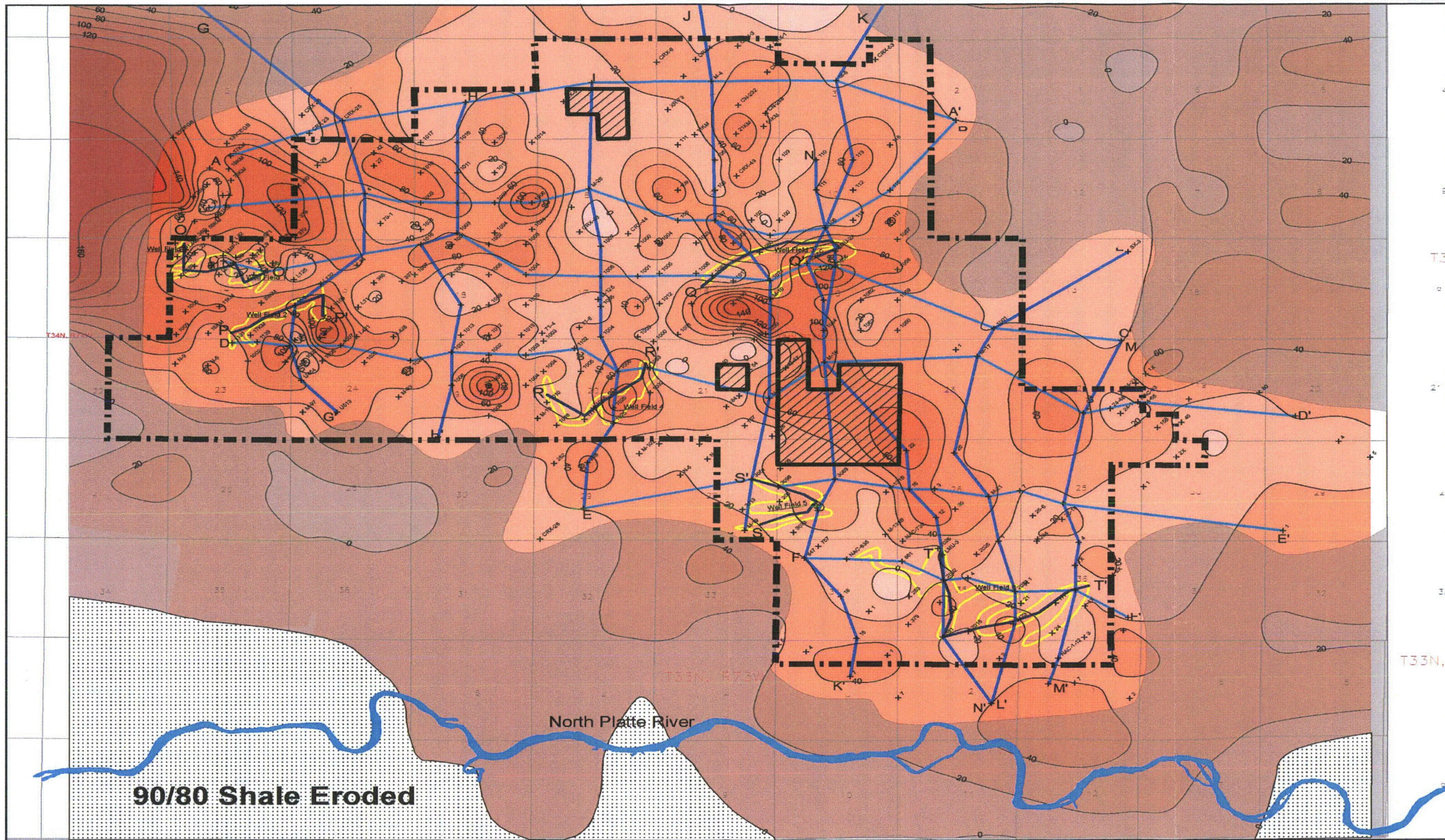


907 N. Poplar St. Suite 260, Casper, WY 82601 (307) 234-9235

**LUDEMAN PROJECT
ISOPACH MAP, 80 SAND**

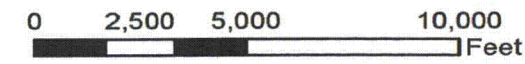
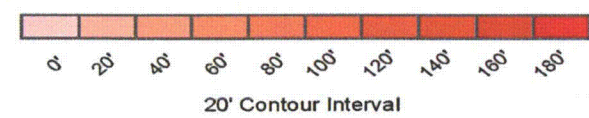
Includes Sections From:
T. 33-35 N. & R. 72-74 W.
CONVERSE COUNTY, WY

Date: 11/5/2013	By: A-A	Checked By:
Rev No.	Description	Date:
		Figure:



Legend

- + 90_80 Shale Data Picks
- Permit Boundary
- ▨ Excluded From the Permit Area
- ▤ 90_80 Shale Eroded
- ▥ 90_80 Shale Projected
- ▭ Estimated Well Fields
- Mine Unite Cross Sections
- North to South Cross Sections
- West to East Cross Sections



1 inch = 3,800 feet

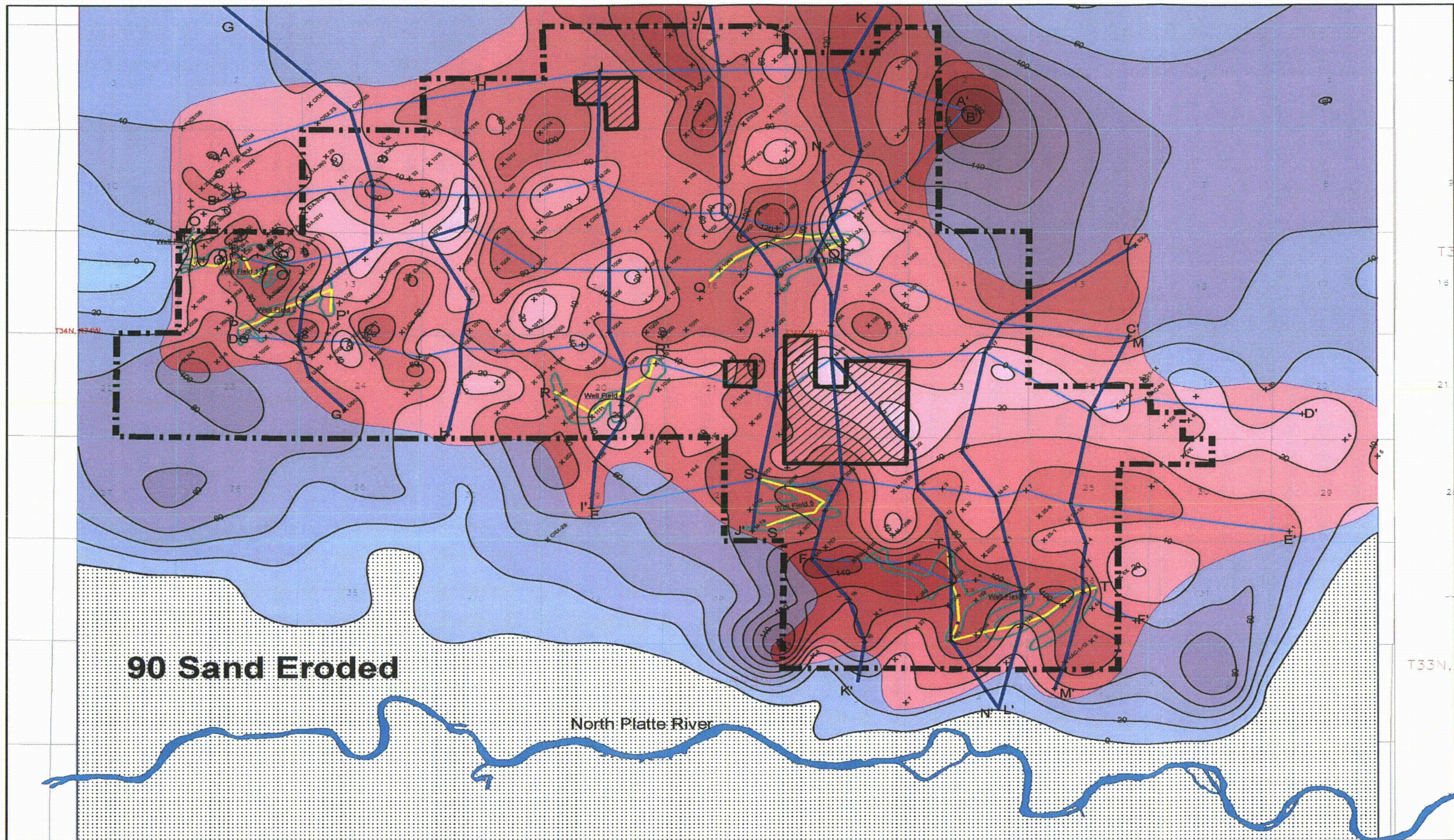
uraniumone™
Investing in our energy

907 N. Poplar St. Suite 260, Casper, WY 82601 (307) 234-8235

**LUDEMAN PROJECT
ISOPACH MAP, 90/80 SHALE**

Includes Sections Form:
T33-35 N. & R. 72-74 W.
CONVERSE COUNTY, WY

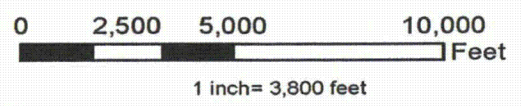
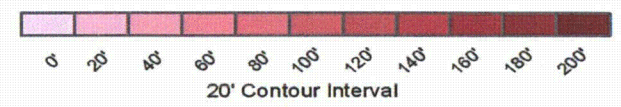
Date: 11/8/2013	By: A-A	Checked By:	
Rev No.	Description	Date:	Figure:



90 Sand Eroded

North Platte River

- Legend**
- + 90 Sand Data Picks
 - Permit Boundary
 - ▨ Excluded From the Permit Area
 - ▤ 90_Sand Eroded
 - ▥ 90_Sand Projected
 - ▭ Estimated Well Fields
 - Mine Unit Cross Sections
 - North to South Cross Sections
 - West to East Cross Sections

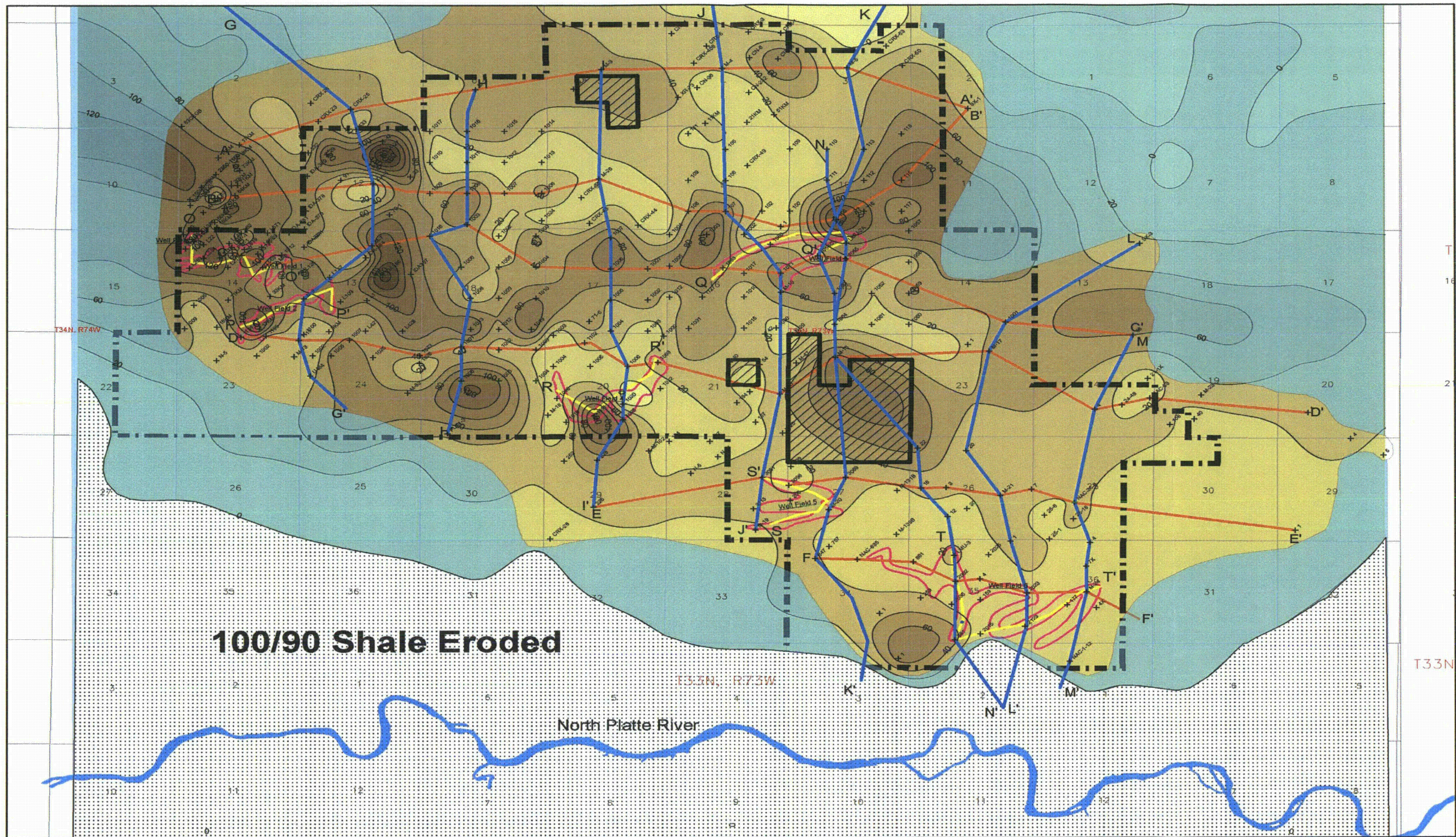


uraniumone
Investing in our energy
907 N. Poplar St. Suite 260, Casper, WY 82601 (307) 234-6235

**LUDEMAN PROJECT
ISOPACH MAP, 90 SAND**
Includes Sections From:
T. 33-35 N. & R. 72-74 W.
CONVERSE COUNTY, WY

Date: 11/8/2013 By: A-A Checked By:

Rev No.	Description	Date:	Figure:

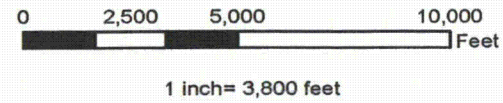
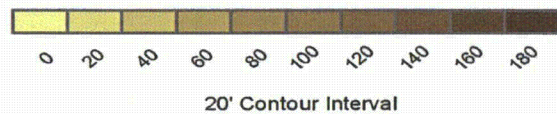


100/90 Shale Eroded

North Platte River

Legend

- + 100_90_Shale Data Picks
- Permit Boundary
- ▨ Excluded From the Permit Area
- 100_90 Shale Projected
- ▤ 100_90 Shale Eroded
- Estimated Well Fields
- North to South Cross Sections
- Mine Unite Cross Sections
- West to East Cross Sections



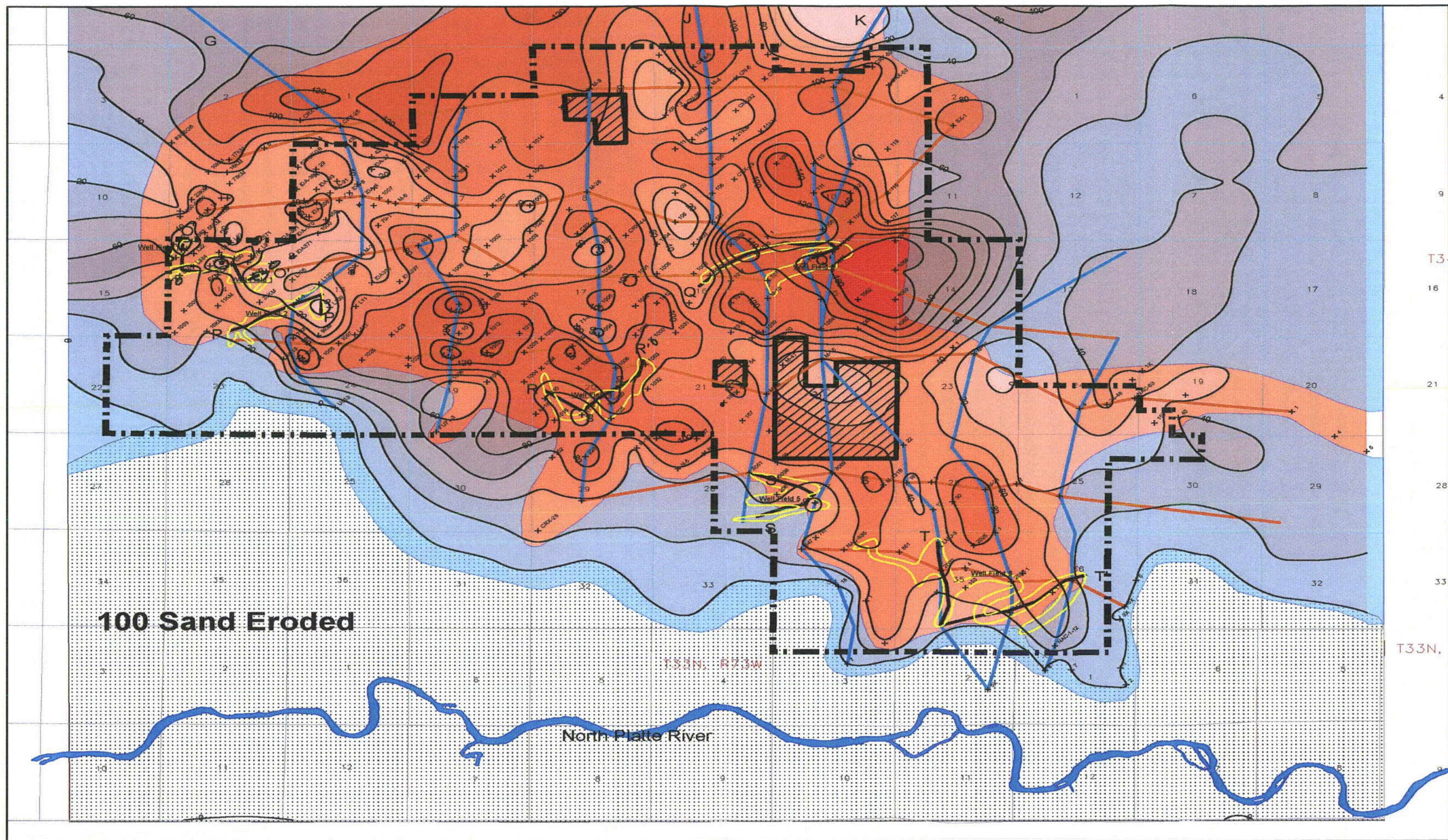
uraniumone™
investing in our energy

907 N. Poplar St. Suite 260, Casper, WY 82601 (307) 234-6235

**LUDEMAN PROJECT
ISOPACH MAP, 100/90 SHALE**

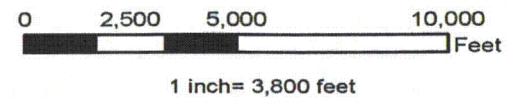
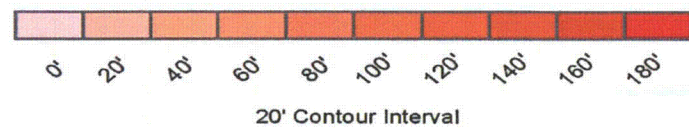
Includes Sections From:
T. 33-38 N. & R. 72-74 W.
CONVERSE COUNTY, WY

Date: 11/6/2013	By: A-A	Checked By:
Rev No.	Description	Date:



Legend

- + 100 Sand Data Picks
- Permit Boundary
- Excluded From the Permit Area
- 100 Sand Projected
- 100 Sand Eroded
- Estimated Well Fields
- North to South Cross Sections
- Mine Unit Cross Sections
- West to East Cross Sections

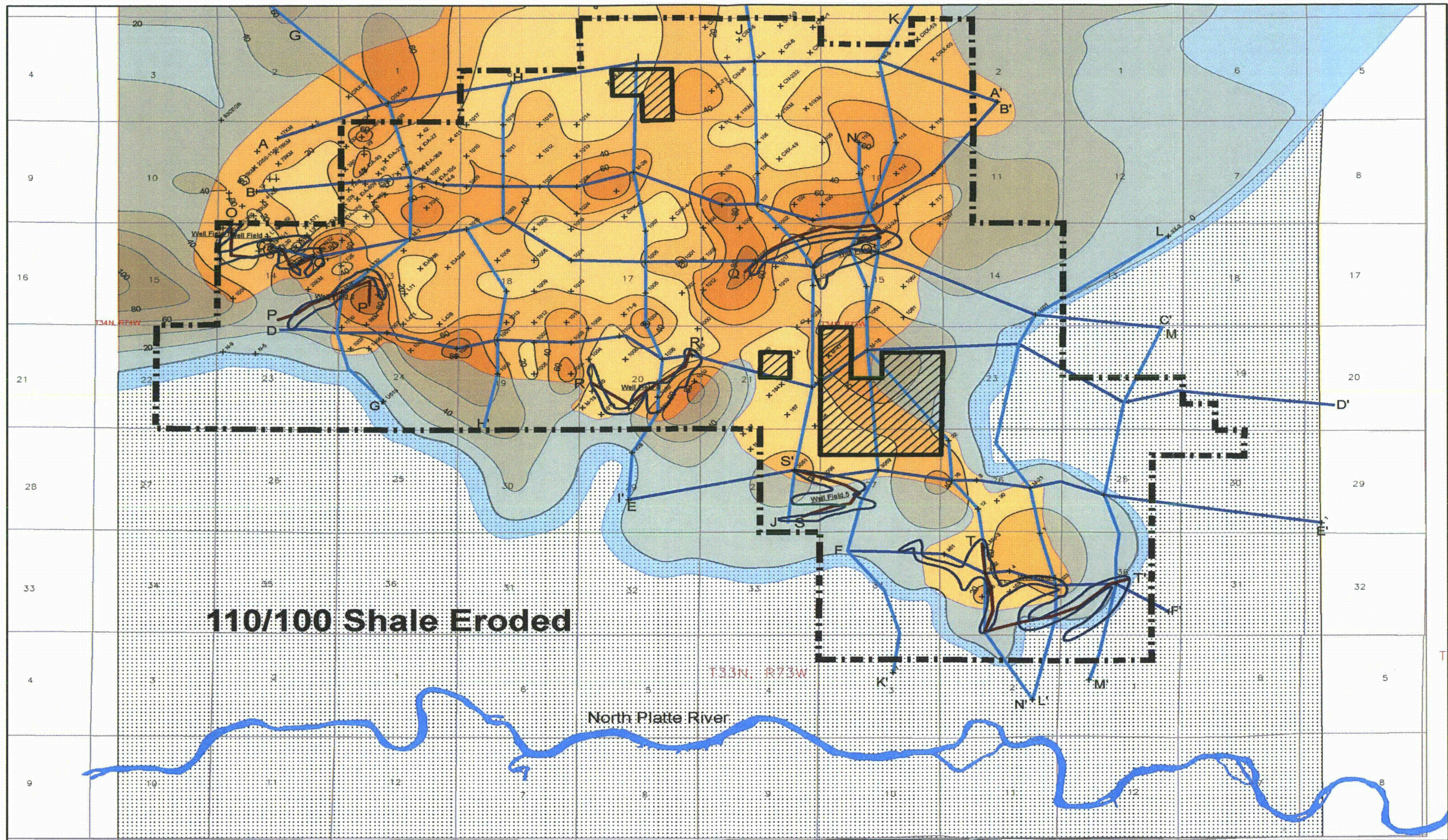


Investing in our energy

907 N. Poplar St. Suite 200, Casper, WY 82601 (307) 234-8235

LUDEMAN PROJECT
ISOPACH MAP, 100 SAND
Includes Sections From:
 T. 33-35 N. & R. 72-74 W
 CONVERSE COUNTY, WY

Date: 11/5/2013		By: A-A	Checked By:
Rev No.	Description	Date:	Figure:

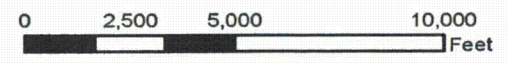
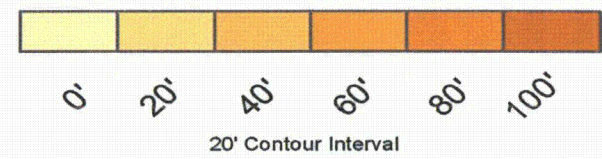


110/100 Shale Eroded

North Platte River

Legend

- + 110_100_Shale Data Picks
- Permit Boundary
- ▨ Excluded From the Permit Area
- 110_100_Shale Projected
- ▤ 110_100_Shale Eroded
- Estimated Well Fields
- Mine Unite Cross Sections
- North to South Cross Sections
- West to East Cross Sections



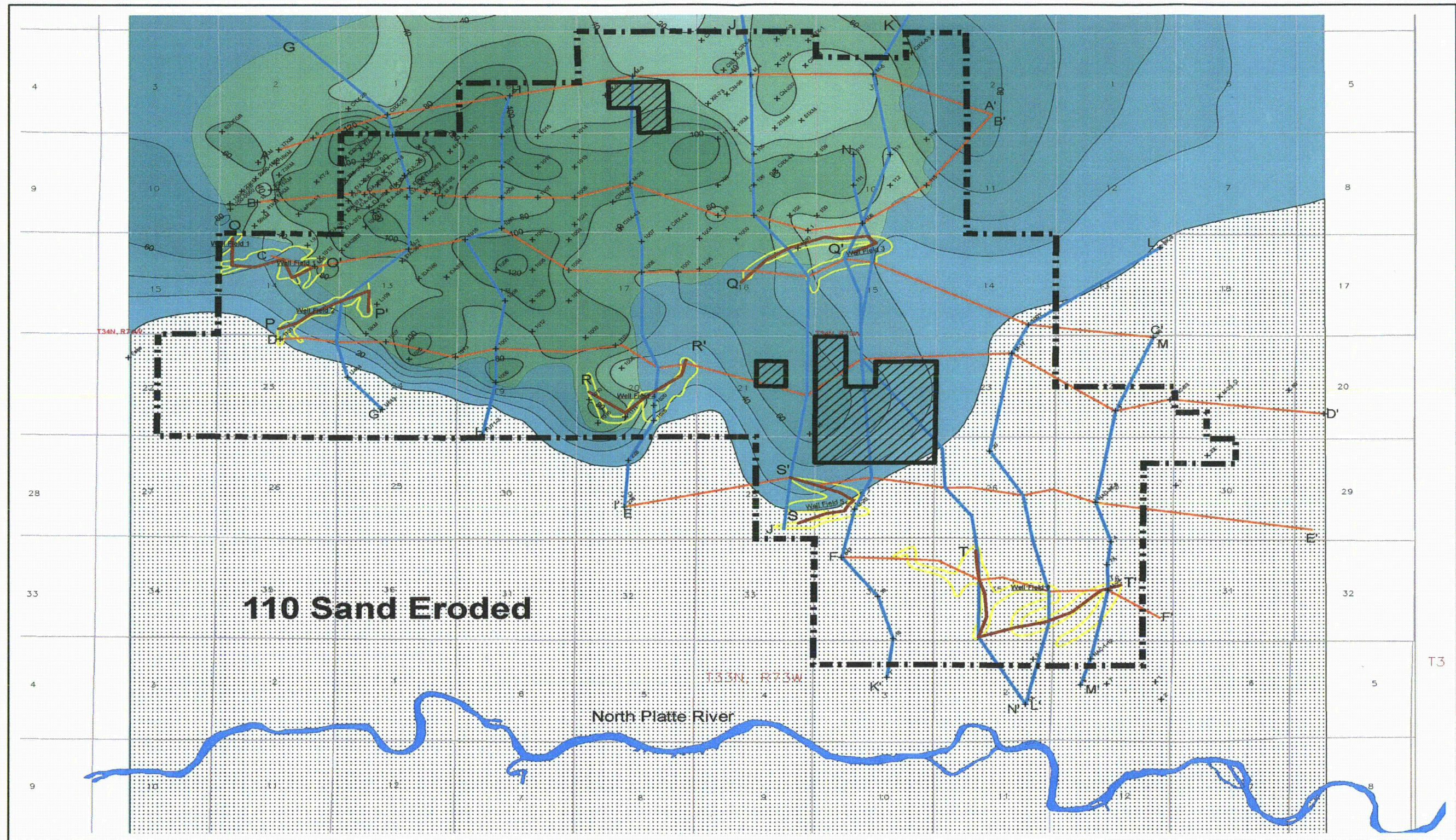
1 inch = 3,800 feet



907 N. Poplar St. Suite 260, Casper, WY 82601 (307) 234-8285

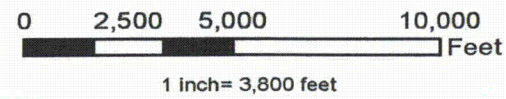
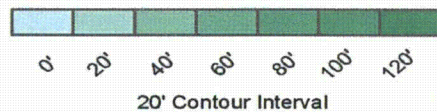
LUDEMAN PROJECT
ISOPACH MAP, 110 /100 SHALE
 Includes Sections From:
 T. 33-35 N & R. 72-74 W
 CONVERSE COUNTY, WY


Date: 11/4/2013	By: AA	Checked By:
Rev No.	Description	Date:
		Figure:



Legend

- + 110_Sand Data Picks
- Permit Boundary
- ▨ Excluded From the Permit Area
- 110_Sand Projected
- ▨ 110_Sand Eroded
- ▭ Estimated Well Fields
- Mine Unit Cross Sections
- North to South Cross Sections
- West to East Cross Sections





investing in our energy

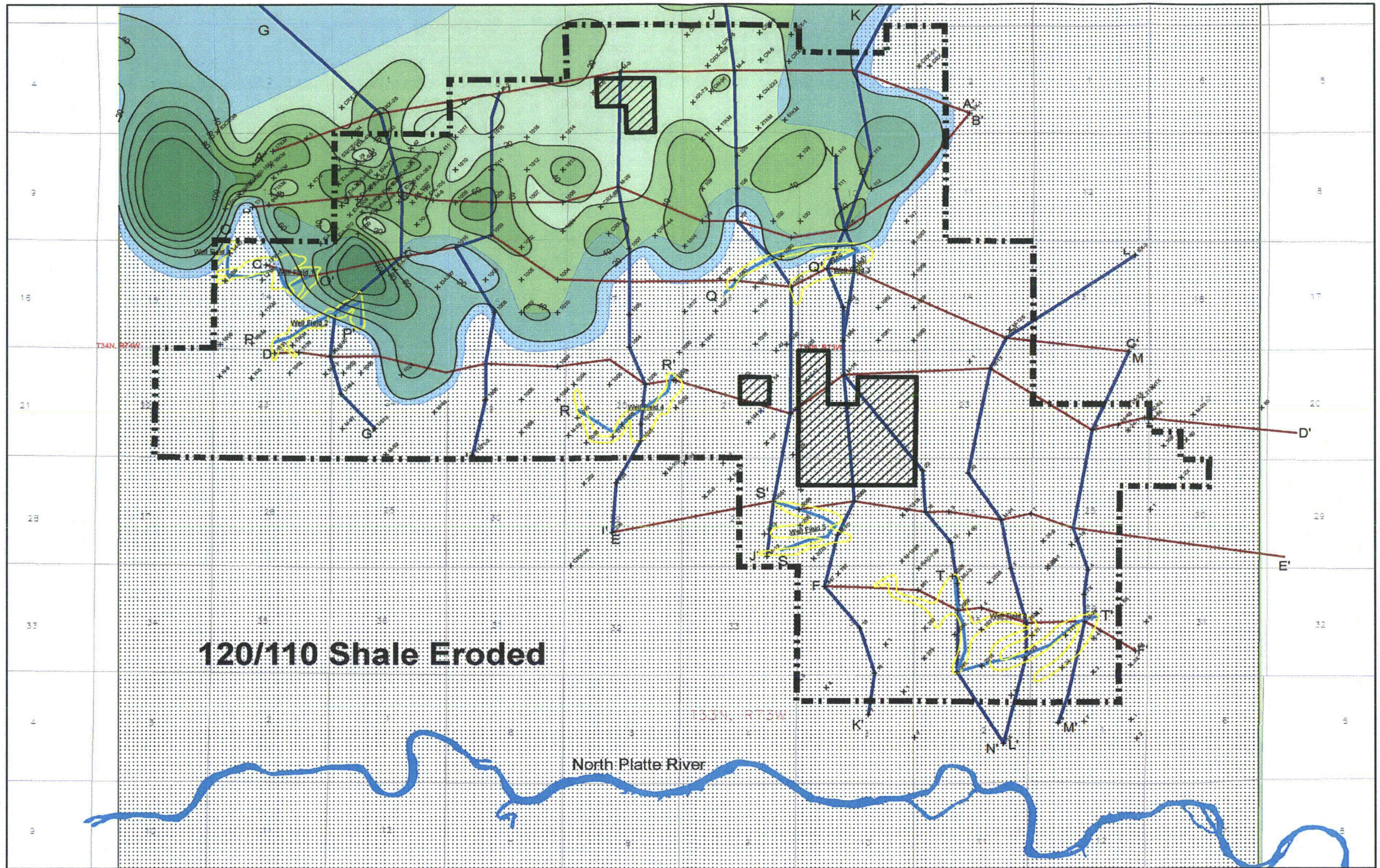
907 N. Poplar St. Suite 260, Casper, WY 82601 (307) 234-9235

LUDEMAN PROJECT

ISOPACH MAP, 110 SAND

Includes Sections From:
T. 33-35 N. & R. 72-74 W
CONVERSE COUNTY, WY

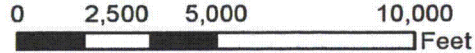
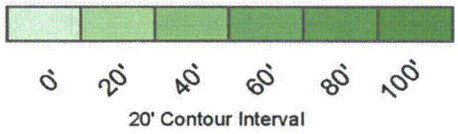
Date: 11/6/2013		By: A-A	
Rev No.	Description	Date	Figure




120/110 Shale Eroded

North Platte River

- Legend**
- + 120_110_Shale Data Picks
 - Permit Boundary
 - ▨ Excluded From the Permit Area
 - 120_110_Shale Projected
 - ▤ 120_110_Shale Eroded
 - Estimated Well Fields
 - Mine Unit Cross Sections
 - North to South Cross Sections
 - West to East Cross Sections

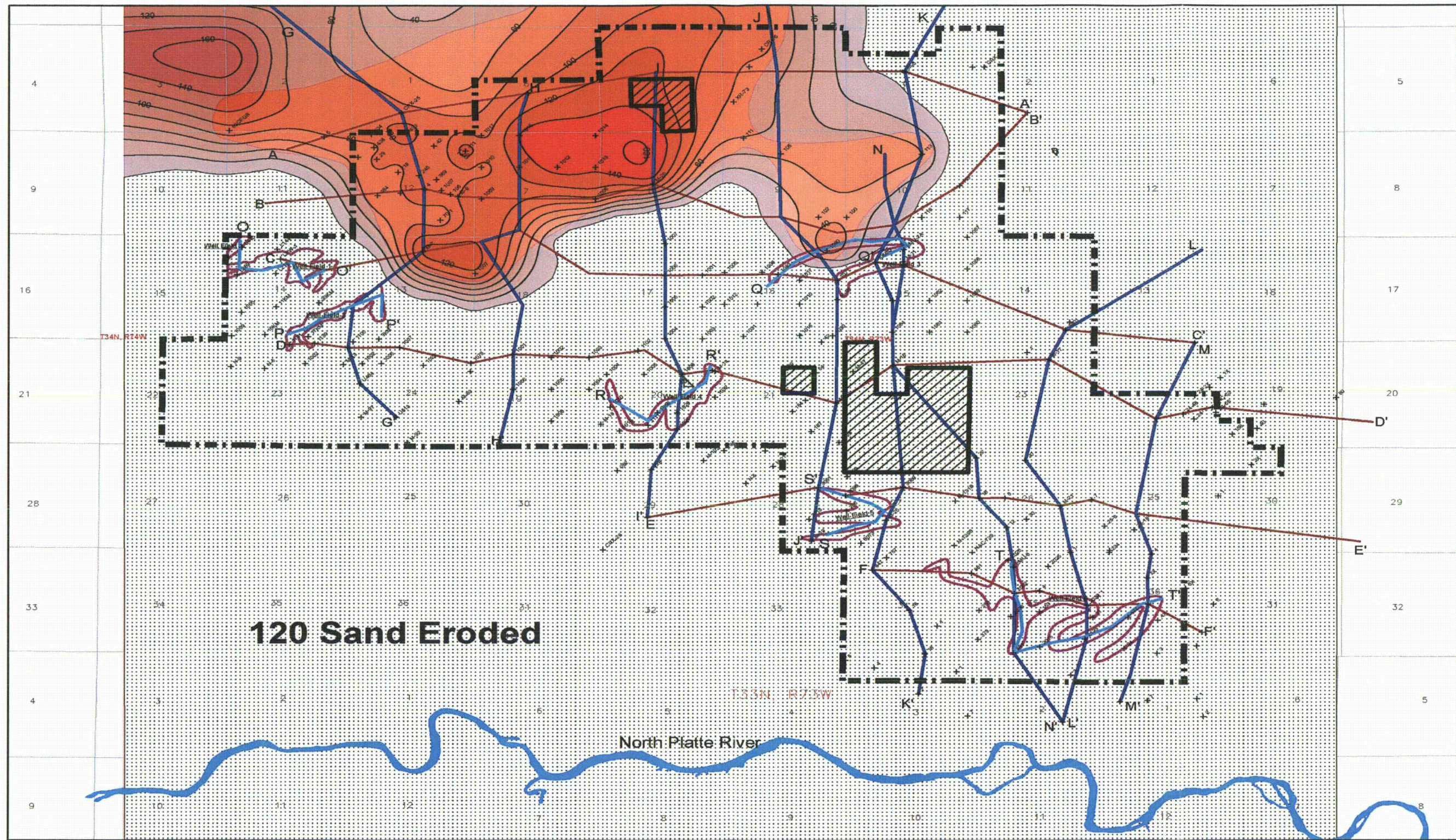


1 inch = 3,800 feet


 Investing in our energy
 907 N. Poplar St. Suite 200, Casper, WY 82601 (307) 234-8235

LUDEMAN PROJECT
ISOPACH MAP, 120/110 SHALE
 Includes Sections From:
 T. 33-35 N. & R. 72-74 W
 CONVERSE COUNTY, WY

Date: 11/6/2013		By: A-A	
Rev No.	Description	Date:	Figure:

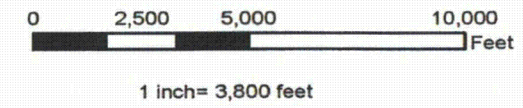
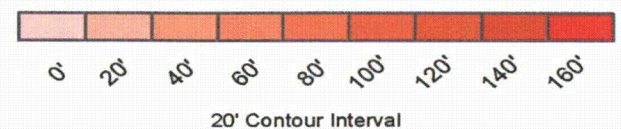


120 Sand Eroded

North Platte River

Legend

- + 120_Sand_Data_Picks
- Permit Boundary
- ▨ Excluded From the Permit Area
- ▤ 120_Sand_Projected
- ▦ 120_Sand_Eroded
- ▭ Estimated Well Fields
- Mine Unit Cross Sections
- North to South Cross Sections
- West to East Cross Sections



uraniumone
investing in our energy
907 N. Poplar St. Suite 260, Casper, WY 82601 (307) 234-8226

LUDEMAN PROJECT
ISOPACH MAP, 120 SAND
Includes Sections From:
T. 33-35 N. & R. 72-74 W
CONVERSE COUNTY, WY

Date: 11/8/2013		By: A-A	
Rev No.	Description	Date:	Figure: