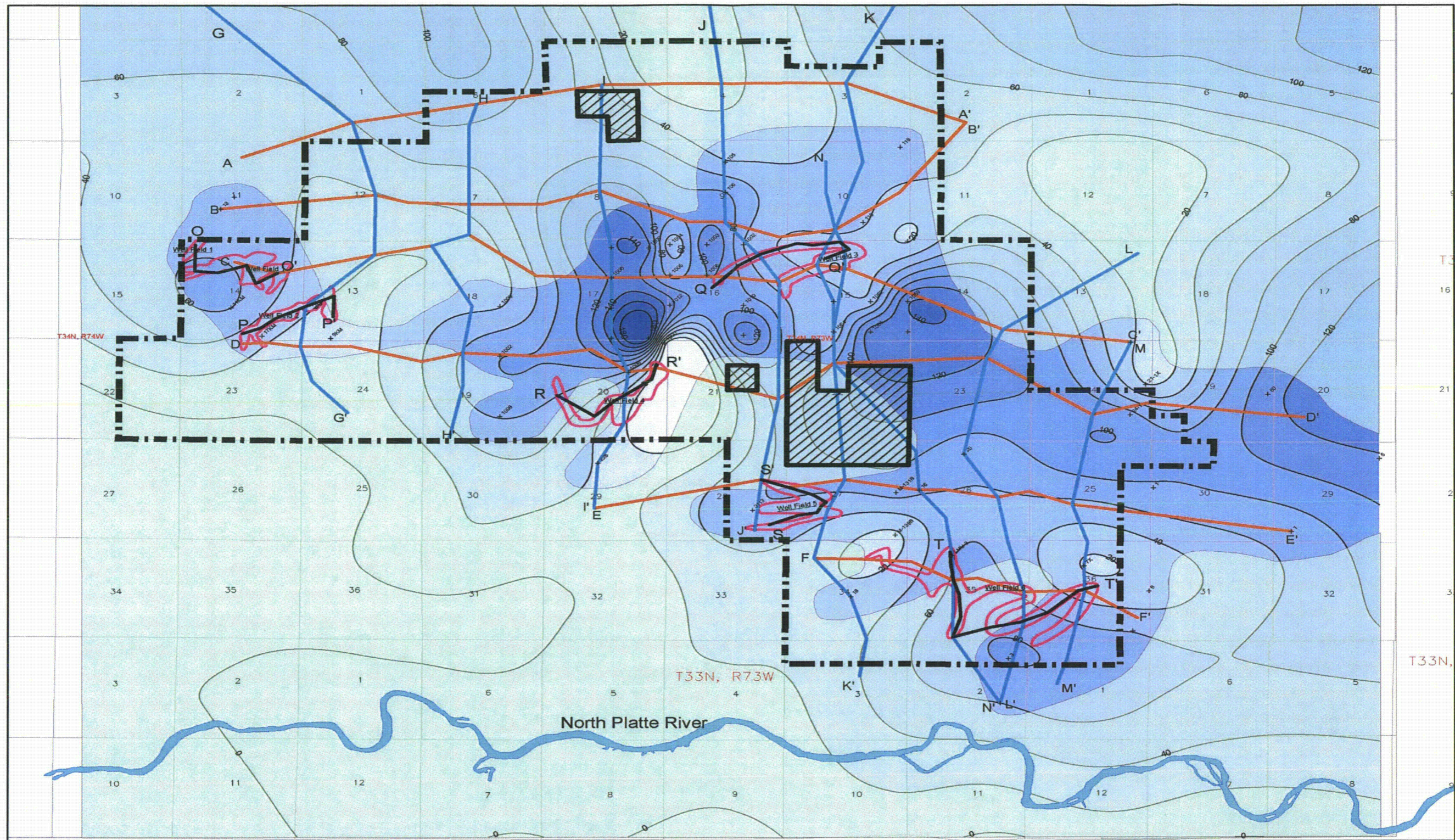
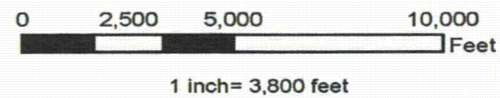
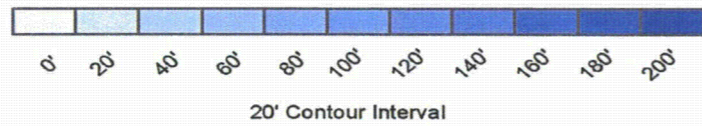


**Attachment 3**  
**Revised Ludeman Sand Isopachs**



**Legend**

- + 40 Sand Data Picks
- Permit Boundary
- ▨ Excluded From the Permit Area
- 40\_Sand Projected
- Estimated Well Fields
- Mine Unit Cross Sections
- North to South Cross Sections
- West to East Cross Sections



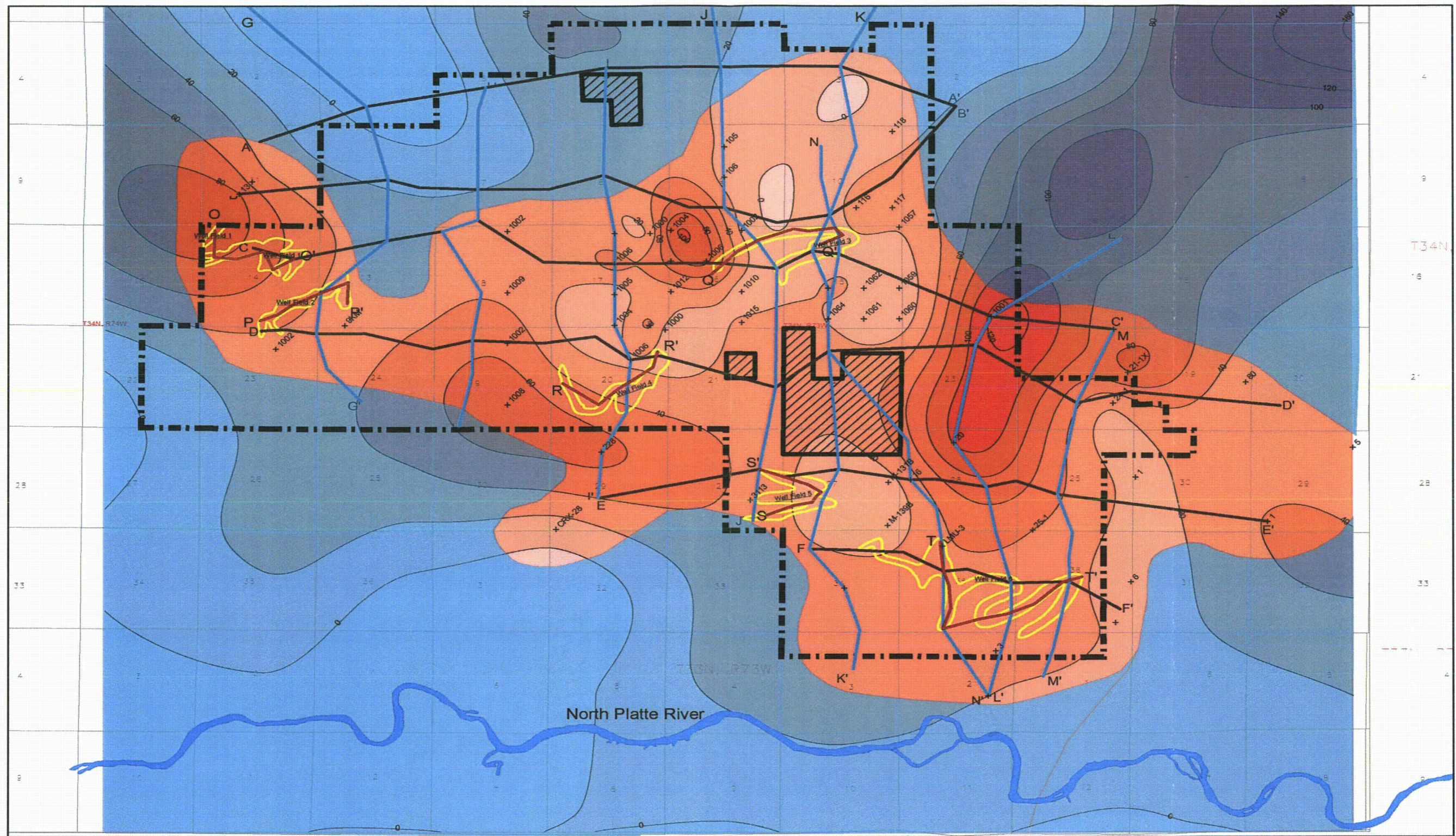
Investing in our energy

907 N. Poplar St. Suite 250, Casper, WY 82601 (307) 234-6235

**LUDEMAN PROJECT**  
**ISOPACH MAP, 40 SAND**

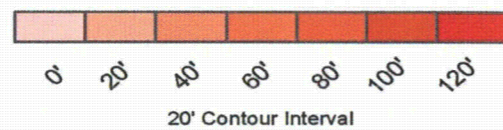
Includes Sections From:  
T. 33-35 N. & R. 72-74 W  
CONVERSE COUNTY, WY

Date: 11/5/2013		By: AA	Checked By:
Rev No.	Description	Date:	Figure:



**Legend**

- + 50\_40 Shale Data Picks
- Permit Boundary
- ▨ Excluded From the Permit Area
- 50\_40\_Shale Projected
- ▭ Estimated Well Fields
- Mine Unit Cross Sections
- North to South Cross Sections
- West to East Cross Sections



1 inch = 3,800 feet

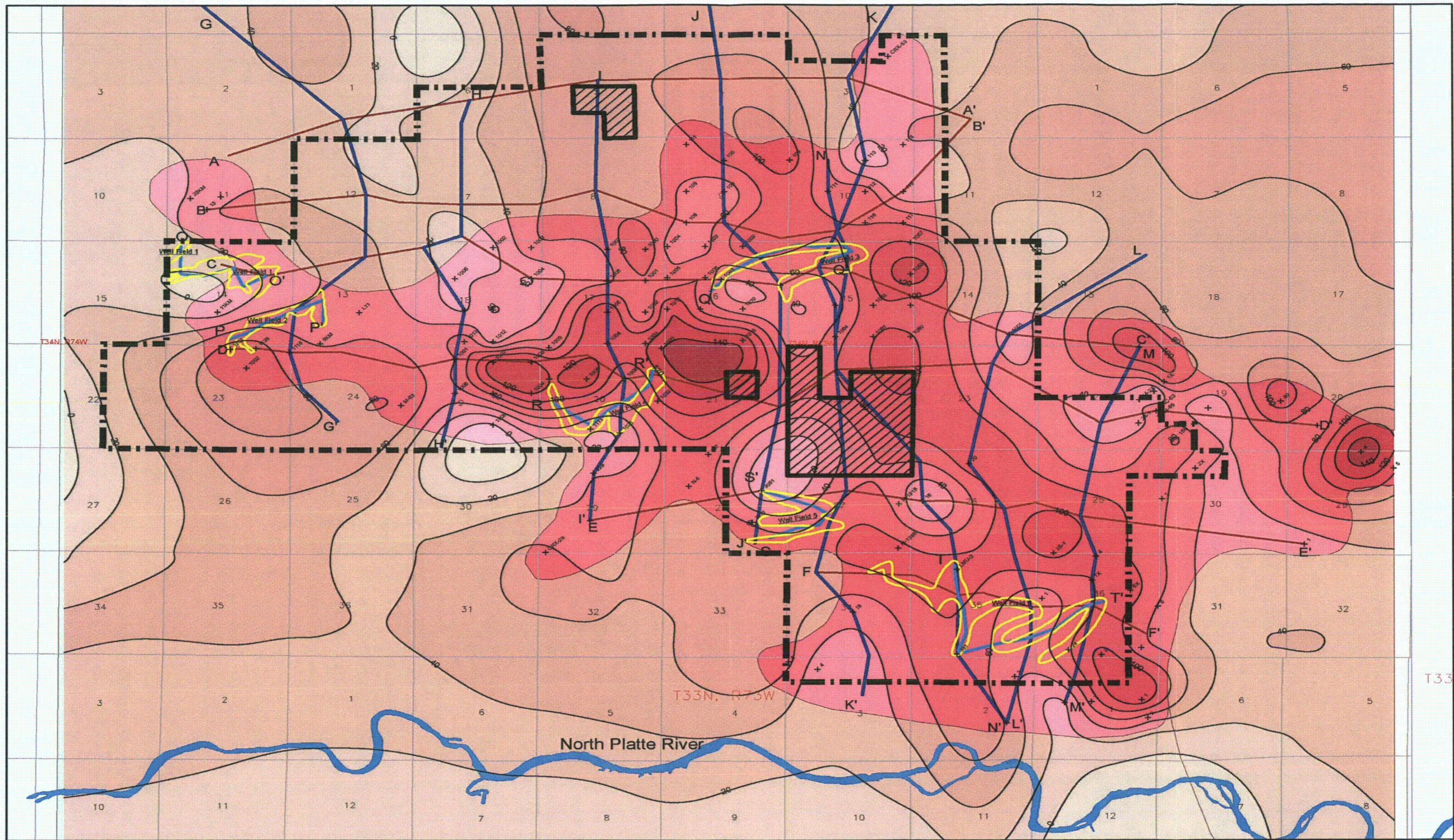
**uraniumone**  
Investing in our energy

907 N Poplar St Suite 200, Casper, WY 82601 (307) 234-8235

**LUDEMAN PROJECT  
ISOPACH MAP, 50/40 SHALE**

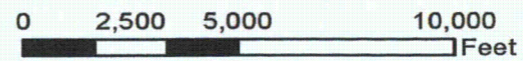
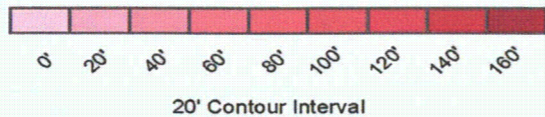
Includes Sections From:  
T. 33-35 N. & R. 72-74 W  
CONVERSE COUNTY, WY

Date: 11/5/2013	By: A-A		
Rev No.	Description	Date:	Figure:



**Legend**

- + 50\_Sand Data Picks
- Permit Boundary
- ▨ Excluded From the Permit Area
- 50\_Sand Projected
- ▭ Estimated Well Fields
- Mine Unit Cross Sections
- North to South Cross Sections
- West to East Cross Sections



1 inch = 3,800 feet

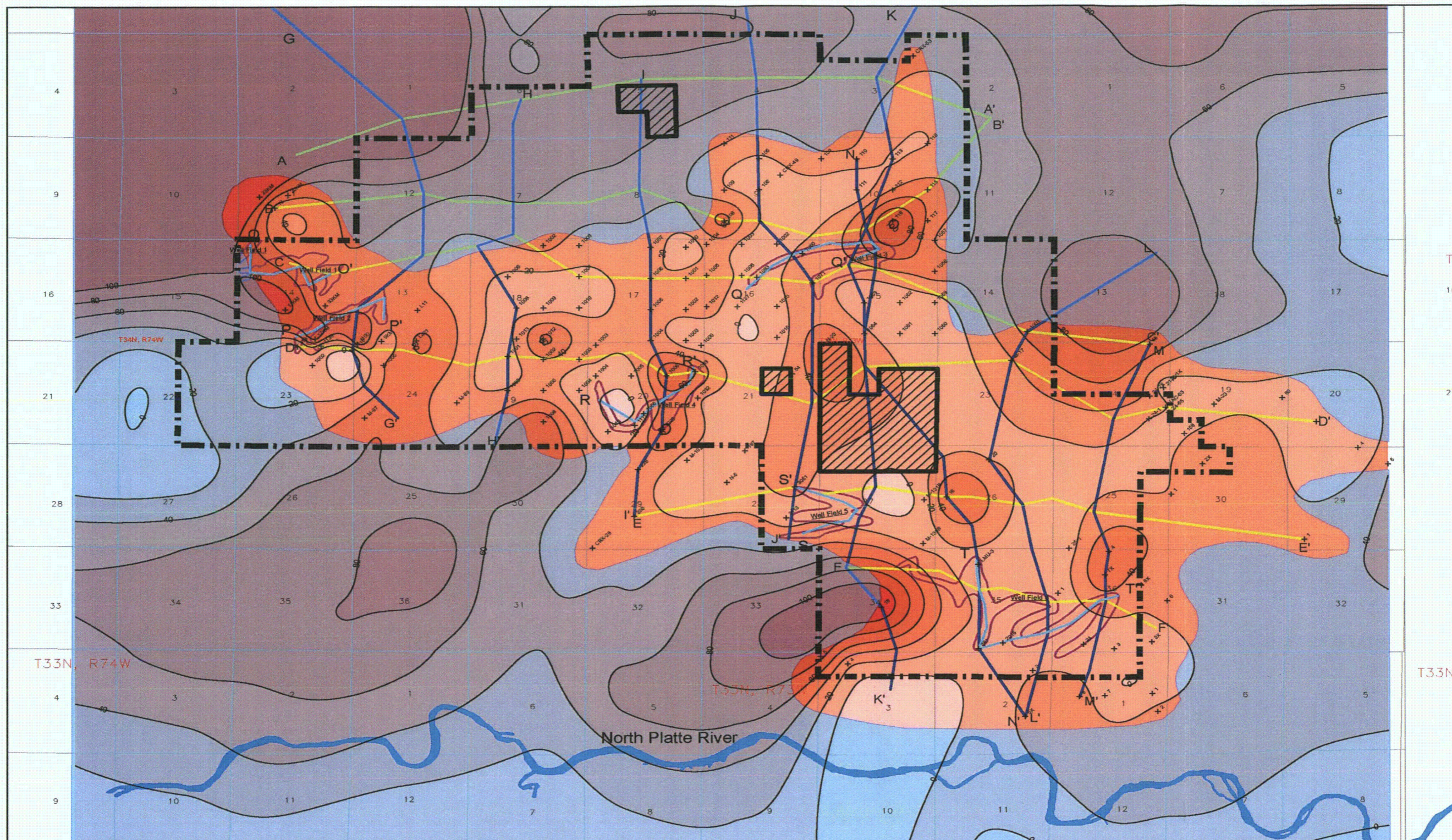
**uraniumone™**  
investing in our energy

907 N. Poplar St. Suite 200, Casper, WY 82601 (307) 234-8235

**LUDEMAN PROJECT  
ISOPACH MAP, 50 SAND**

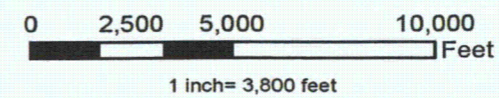
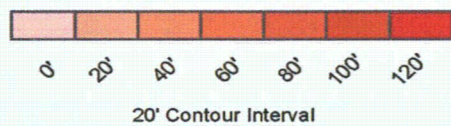
Includes Sections From:  
T. 33-35 N. & R. 72-74 W  
CONVERSE COUNTY, WY

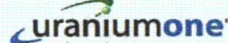
Date: 11/5/2013	By: A-A	Checked By:	
Rev No.	Description	Date:	Figure:



**Legend**

- + 60\_50\_Shale Data Picks
- Permit Boundary
- ▨ Excluded From the Permit Area
- 60\_50 Shale Projected
- Estimated Well Fields
- Mine Unite Cross Sections
- North to South Cross Sections
- West to East Cross Sections





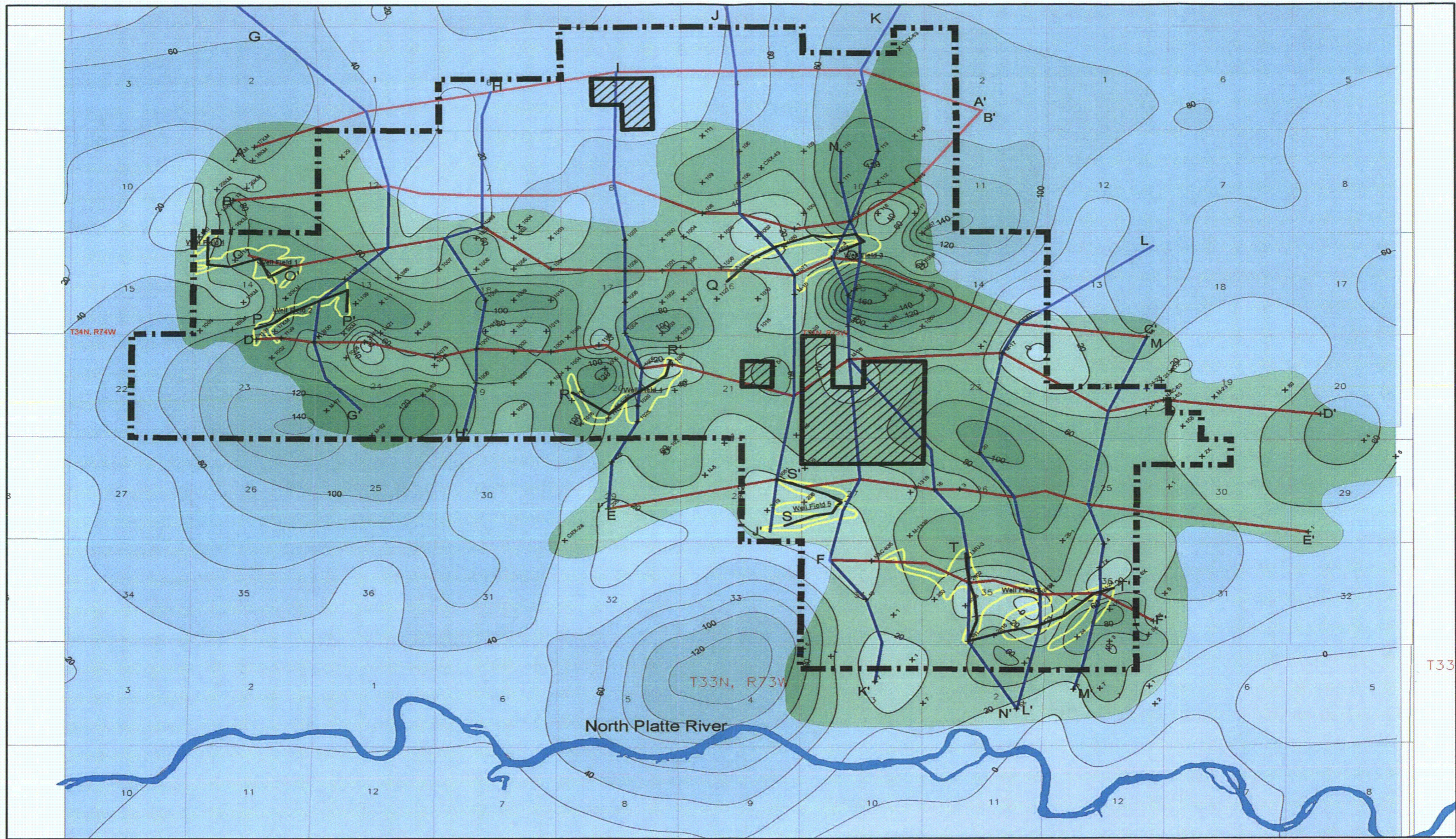
Investing in our energy

907 N. Poplar St. Suite 260, Casper, WY 82601 (307) 234-8235

**LUDEMAN PROJECT**  
**ISOPACH MAP, 60/50 SHALE**

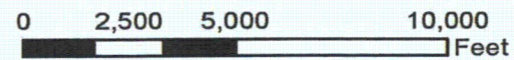
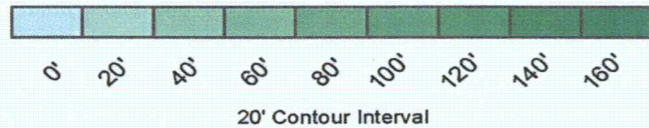
Includes Sections From:  
 T. 33-35 N. & R. 72-74 W.  
 CONVERSE COUNTY, WY

Date: 11/5/2013		By: A-A		Checked By:	
Rev No.	Description	Date:		Figure:	



**Legend**

- + 60\_Sand Data Picks
- Permit Boundary
- ▨ Excluded From the Permit Area
- 60\_Sand Projected
- ▭ Estimated Well Fields
- Mine Unite Cross Sections
- North to South Cross Sections
- West to East Cross Sections



1 inch = 3,800 feet

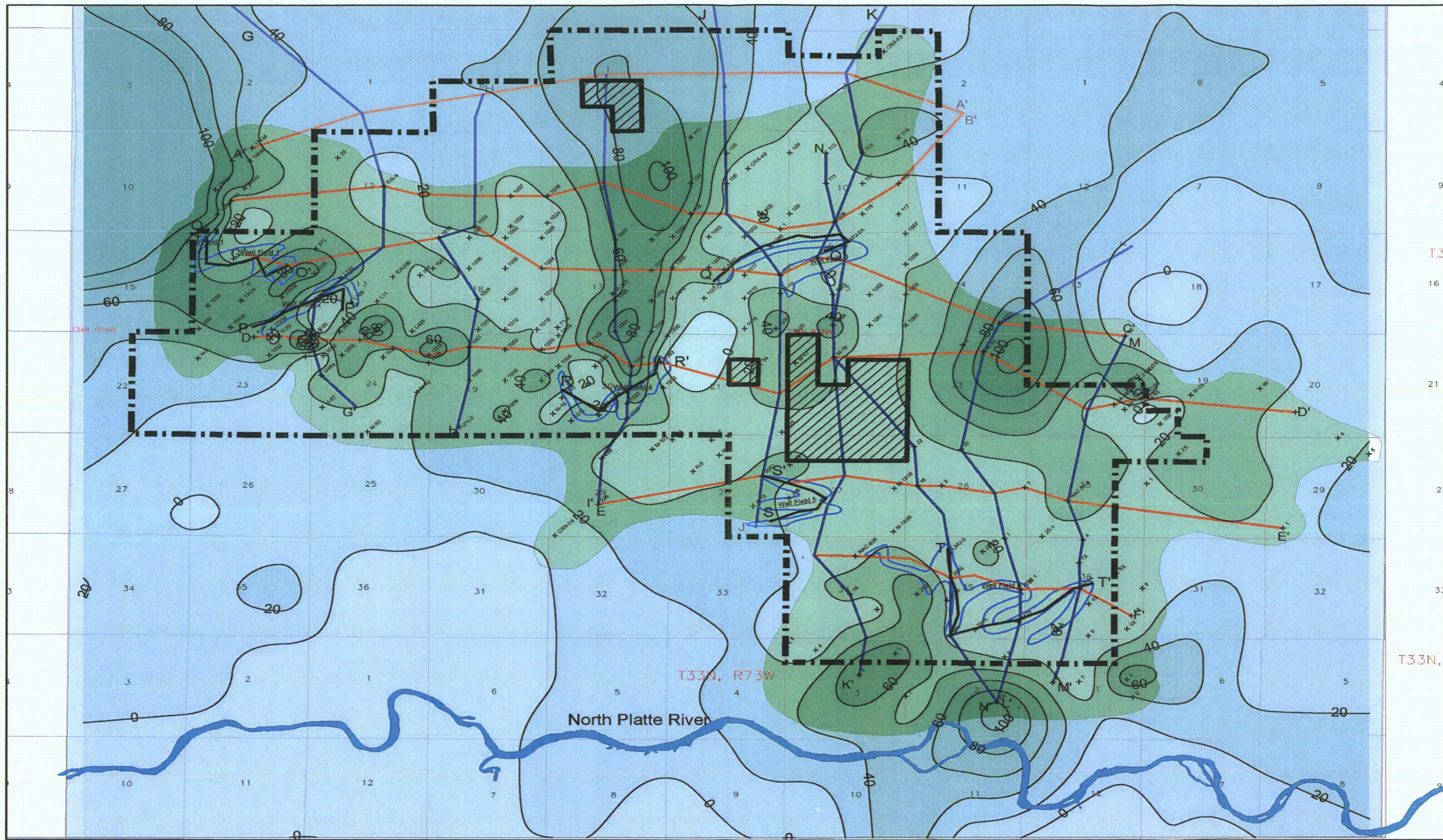
**uraniumone**  
Investing in our energy

907 N. Poplar St. Suite 200, Casper, WY 82601 (307) 234-8235

**LUDEMAN PROJECT  
ISOPACH MAP, 60 SAND**

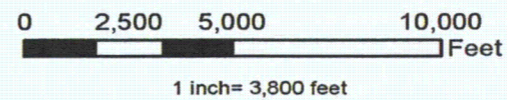
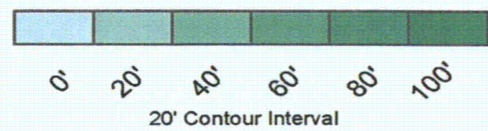
Includes Sections From:  
T. 33-35 N. & R. 72-74 W.  
CONVERSE COUNTY, WY


Date: 11/5/2013	By: A-A	Checked By:
Rev No.	Description	Date:
		Figure:



**Legend**

- + 70\_60\_Shale Data Picks
- - - Permit Boundary
- ▨ Excluded From the Permit Area
- 70\_60\_Shale Projected
- Estimated Well Fields
- Mine Unite Cross Sections
- North to South Cross Sections
- West to East Cross Sections





Investing in our energy

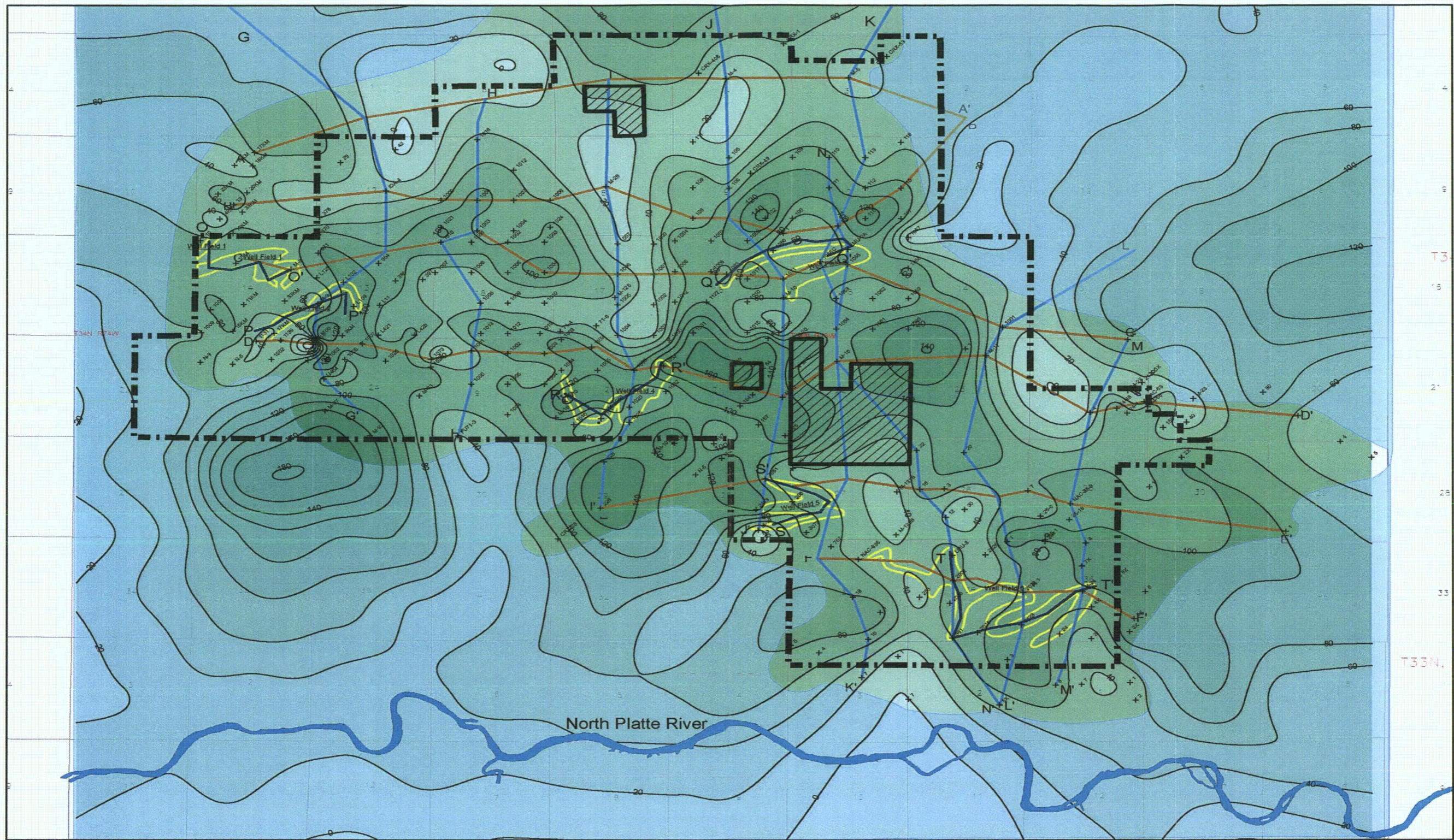
907 N. Poplar St. Suite 200, Casper, WY 82601 (307) 234-8235

**LUDEMAN PROJECT**

**ISOPACH MAP, 70/60 SHALE**

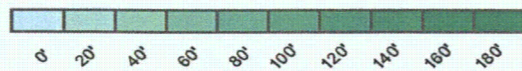
Includes Sections From:  
T. 33-35 N. & R. 72-74 W.  
CONVERSE COUNTY, WY

<small>Date: 11/4/2013</small>		<small>By: A-A</small>		<small>Checked By:</small>	
<small>Rev No.</small>	<small>Description</small>	<small>Date:</small>	<small>Figure:</small>	<small>Figure:</small>	<small>Figure:</small>

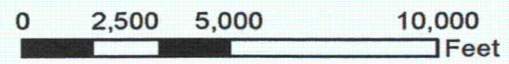


**Legend**

- + 70\_Sand Data Picks
- Permit Boundary
- ▨ Excluded From the Permit Area
- 70\_Sand Projected
- Estimated Well Fields
- Mine Unite Cross Sections
- North to South Cross Sections
- West to East Cross Sections



20' Contour Interval



1 inch = 3,800 feet

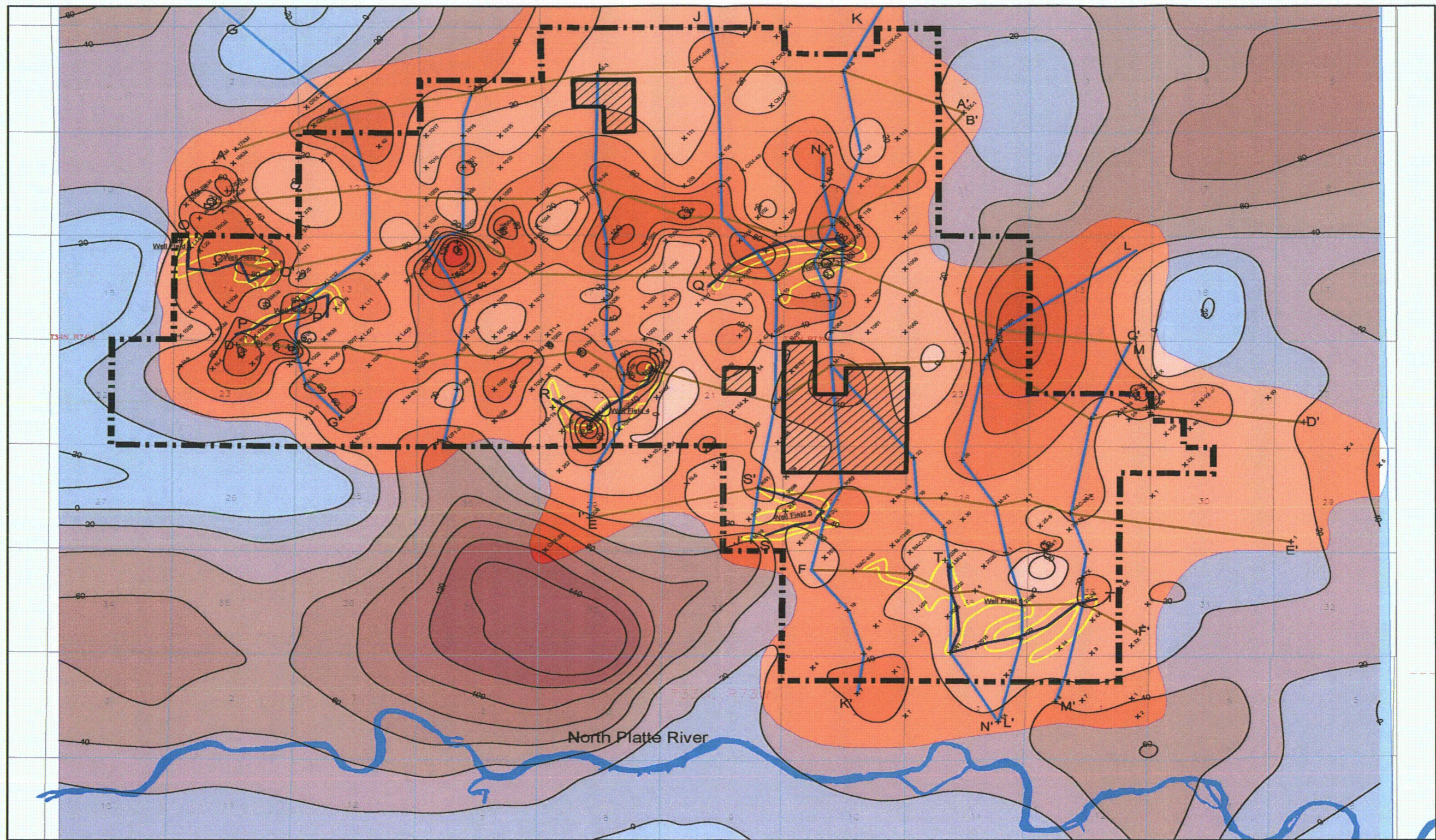


**LUDEMAN PROJECT  
ISOPACH MAP, 70 SAND**

Includes Sections From:  
T. 33-35 N. & R. 72-74 W.  
CONVERSE COUNTY, WY

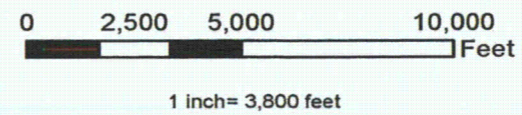
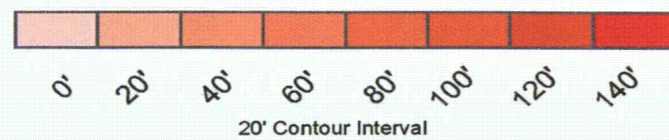
Date: 11/4/2013		By: A-A		Checked By:	
Rev No.	Description	Date:		Figure:	





**Legend**

- + 80\_70\_Shale Data Picks
- Permit Boundary
- ▨ Excluded From the Permit Area
- 80\_70\_Shale Projected
- ▭ Estimated Well Fields
- Mine Unite Cross Sections
- North to South Cross Sections
- West to East Cross Sections



**uraniumone™**  
Investing in our energy  
007 N. Poplar St. Suite 200, Casper, WY 82601 (307) 234-9235

**LUDEMAN PROJECT**  
**ISOPACH MAP, 80/70 SHALE**  
Includes Sections From:  
T. 33-35 N. & 72-74 W  
CONVERSE COUNTY, WY

Date: 11/4/2013		By: AA	Checked By:
Rev No.	Description	Date:	Figure: