

SEP 16 1982

TE HQ FILE COPY

Docket Nos. 50-361
50-362

Southern California Edison Company
P. O. Box 800
2244 Walnut Grove Avenue
Rosemead, California 91770

Attention: Dr. L. T. Papay, Vice President
Advanced Engineering

Gentlemen:

This letter is to inform you that we have reorganized the Division of Resident, Reactor Projects, and Engineering Programs in Region V.

The reorganization is intended to improve the continuity of our programs for facilities in the construction and pre-operational testing phases as they enter the operational phase. The construction and operation branches have been combined and project responsibility within the Division will remain throughout construction and operations with one of our project branches.

Additionally we have established an Engineering Programs Section. This section will provide a single point of focus for the reactor licensing effort which is being transferred from NRR to the Regional Offices as part of the NRC's Regionalization program.

The following summarizes the new organization as it relates to the Region V power reactor facilities.

Reactor Projects Branch #1



Daniel M. Sternberg, Chief
Phone: 415 943-3737

Projects Section 1
Robert T. Dodds, Chief
Phone: 415 943-3720

Washington Public Power Supply System
Portland General Electric

8209210074 820916
PDR ADOCK 05000361
P PDR

app.
1E01

OFFICE							
SURNAME	STERNBERG	CREWS					
DATE	9/14/82	9/15/82					

SEP 16 1982

Projects Section 2
Tolbert Young, Jr., Chief
Phone: 415 943-3853

Arizona Public Service Company
Sacramento Municipal Utility District

Reactor Projects Branch #2

Thomas W. Bishop, Chief
Phone: 415 943-3751

Projects Section 3
Dennis F. Kirsch, Chief
Phone: 415 943-3723

Southern California Edison Company
Pacific Gas and Electric Company

Engineering Programs Section

Gerald B. Zwetzig, Chief
Phone: 415 943-3749

Please feel free to call upon me or my staff if you have questions regarding our revised organization.

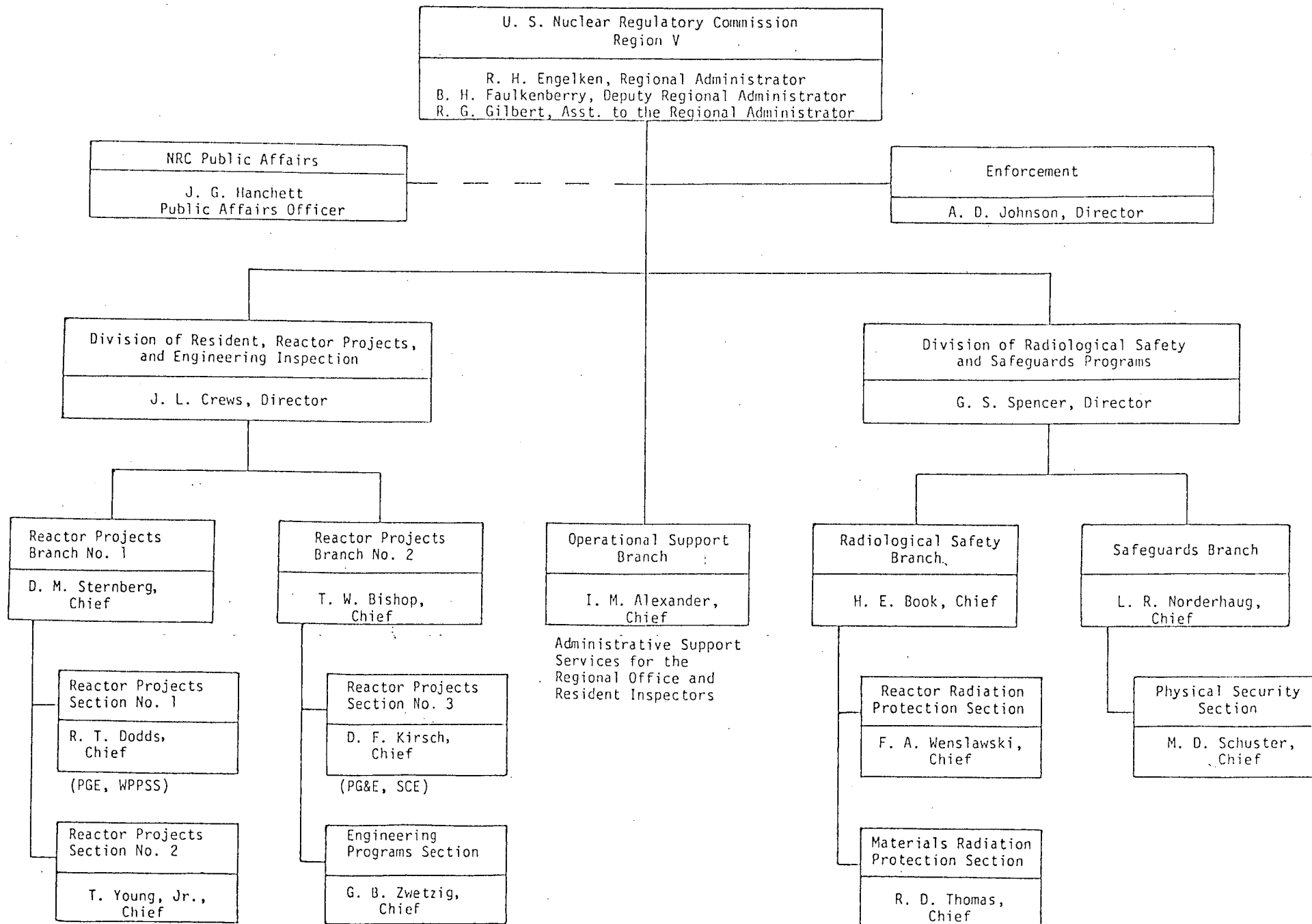
D. M. Sternborg for:

J. L. Crews, Director
Division of Resident, Reactor Projects
and Engineering Programs

cc:
R. Dietch, SCE
H. B. Ray, SCE (San Clemente)

bcc: DMB/Document Control Desk (RIDS0)

Distributed by RV:
State of CA (Johnson)
Resident Inspector
Engelken



dupe of 8299218023