



The John Maddox Denn House, located at 112 Poplar Street in Lower Alloways Creek Township, Salem County, New Jersey. Constructed in 1725, this patterned brick house features the construction date of 1725, Denn's initials, and a diamond pattern in glazed brick in the gable end. The interior is an open floor plan with a central fire place. The portion of the structure to the left is a mid- to late-20th century addition. The Denn House was surveyed by the Historic American Building Survey (HABS) in 1933. According to MACTEC's visual assessment, the proposed cooling tower is not visible from the resource.

1



The residence at 349 Fort Elfsborg Road is located at the edge of the 4.9-mile study area for the architectural resources reconnaissance-level field survey. The two-and-a-half-story masonry residence has a hipped roof and is surmounted by a cupola. It exhibits elements of both the Greek Revival and Italianate styles, and likely dates to the mid 19th century. The windows throughout the house contain six-over-six-light double-hung sash with the exception of the eyebrow windows at the top story level. The proposed cooling tower location appears to be visible from the potential resource.

2

Potential Architectural Resources in 4.9-mile Study Area in New Jersey



This two-story wood-frame vernacular house is located at 50 Cedar Swamp Road in Townsend, Delaware. Likely constructed in the early 19th century, the house has a central brick chimney and a steeply pitched roof. It is clad in wood clapboards. Entries are located at either end of the front façade. The ground-story windows appear to have been replaced in the late 19th century with two-over-two-light double-hung sash. The smaller upper-story windows retain three-over-three-light sash. The house appears on the 1868 Pomeroy & Beers Delaware State Atlas as belonging to W.S. Deakyne. The proposed cooling tower location appears to be visible from the potential resource.

3



Resource 2: Samuel Urion/ Yerkes Farmstead – Lighthouse Road
State Register Eligible
Visibility: The cooling tower is visible from this location

1



Resource 5: Salem Department of Motor Vehicle Inspection Station – Route 45, Salem
State Register Eligible
Visibility: The cooling tower is not visible from this location

2



Resource 7: Chestnut Street, Salem
State Register Eligible
Visibility: The cooling tower is not visible from this location

3



Resource 10: Walnut Street, Salem;
State Register Eligible;
Visibility: The cooling tower is not visible from this location

4



Resource 12: Salem Working Class Historic District, Salem
State Register Eligible
Visibility: The cooling tower is not visible from this location

5



Resource 13: Benjamin Holmes House – 410 Fort Elfsborg Road
State/National Register Listed
Visibility: The cooling tower is visible from this location

6



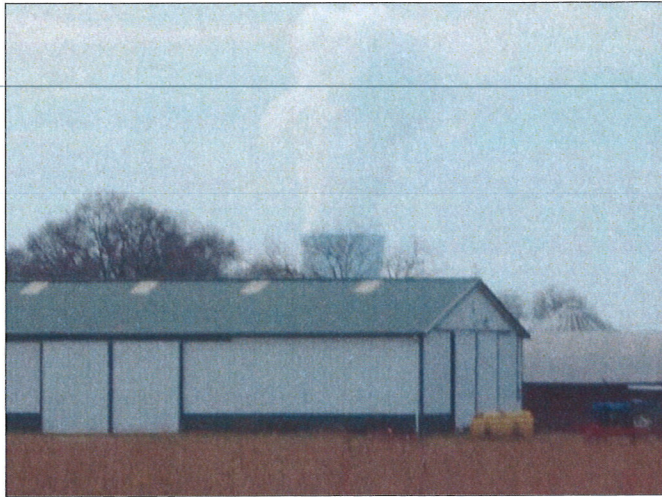
Resource 16: New Bridge Road (CR Route 623) over Alloways Creek
State Register Eligible
Visibility: The cooling tower is not visible from this location

7



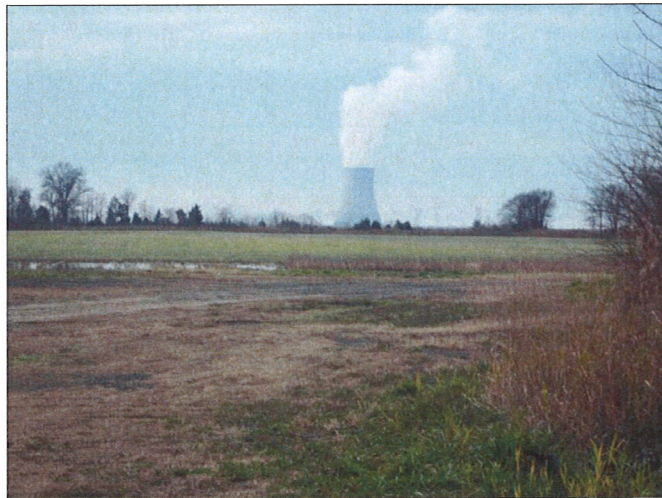
Resource 17: Abel Nicholson House – Hancock's Bridge-Fort Elfsborg Road
National Historic Landmark/National/State Register Listed
Visibility: The cooling tower is visible from this location

8



Resource 20: Ware-Shourds House – 134 Poplar Rd
State/National Register Listed
Visibility: The cooling tower is marginally visible from this location

9



Resource 22: Nathaniel Chambliss House - 133 Alloway Creek Neck Road
State/National Register Eligible
Visibility: The cooling tower is visible from this location

10



Resource 6: Fairview – US Route 13, Delaware City
State/National Register Listed
Visibility: The cooling tower is not visible from this location.

1



Resource 7: Linden Hill – US Route 13, St. Georges
State/National Register Listed
Visibility: The cooling tower is visible from this location

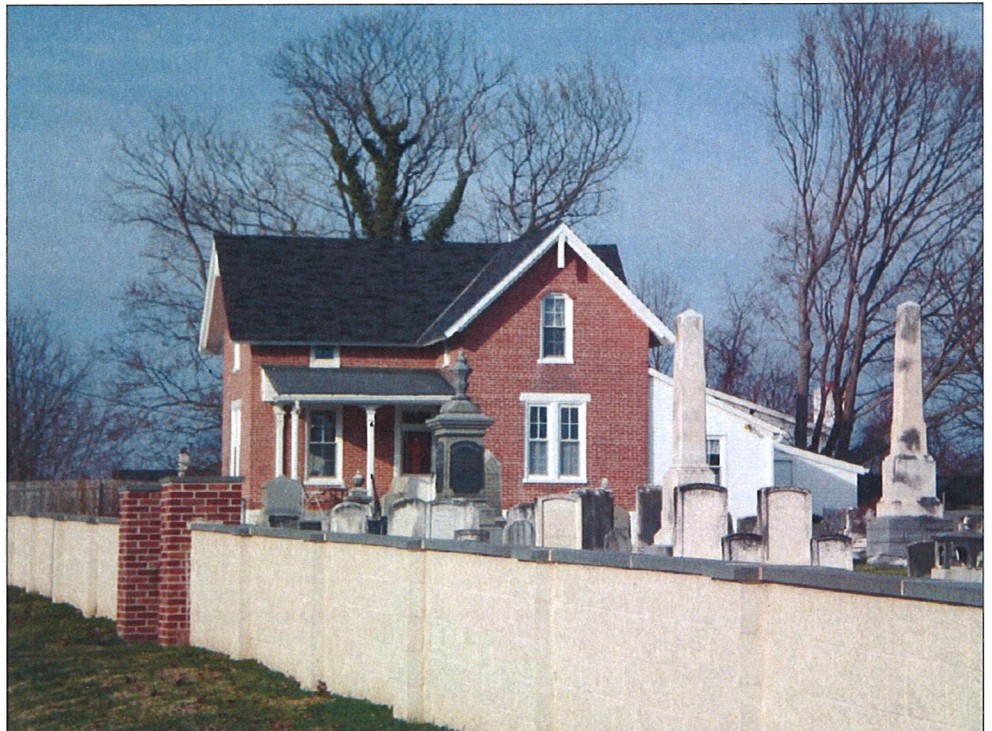
2



Resource 8: Dragon Run Farm – McCoy Road, Kirkwood
State/National Register Listed

3

Visibility: There is a marginal view of cooling tower from this location during the winter.



Resource 9: St. Georges Cemetery Caretaker's House - Kirkwood and St. George's Road, St. Georges
State/National Register Listed

4

Visibility: There is a marginal view of cooling tower from this location during the winter



Resource 10: McCoy House – Kirkwood and McCoy Roads, St. Georges
State/National Register Listed

5

Visibility: There is a marginal view of cooling tower from this location during the winter.



Resource 11: Vernacular Frame House - Delaware Street, St. Georges
State/National Register Listed

6

Visibility: The cooling tower is not visible from this location



Resource 16: Windsor – 1060 Dutch Neck Road, Port Penn
State/National Register Listed
Visibility: The cooling tower is visible from this location

7



Resource 17: Idalia Manor – US Route 13, Mount Pleasant
State/National Register Listed
Visibility: The cooling tower is visible from this location.

8



Resource 18: Fairview – Route 412, Odessa
State/National Register Listed
Visibility: The cooling tower is not visible from this location

9



Resource 19: J.B. Nelson House – US Route 13, Port Penn
State/National Register Listed
Visibility: The cooling tower is visible from this location

10



Resource 20: Ashton Historic District – Thornton Road, Port Penn
State/National Register Listed
Visibility: The cooling tower is visible from this location

11



Resource 24: Cleaver House – Biddle's Corner Road, Port Penn
State/National Register Listed
Visibility: The cooling tower is visible from this location

12



Resource 25: Robert Grose House – 1000 Port Penn Road, Port Penn
State/National Register Listed
Visibility: The cooling tower is visible from this location

13



Resource 25: A. Eliason House – Route 896, Mt. Pleasant
State/National Register Listed
Visibility: The cooling tower is not visible from this location

14



Resource 27: Dilworth House – Route 9, Port Penn
State/National Register Listed
Visibility: The cooling tower is visible from this location

15



Resource 30: Retirement Farm – US Route 13, Odessa
State/National Register Listed
Visibility: The cooling tower is visible from this location

16



Resource 33: Weston – Route 71, Middletown
State/National Register Listed
Visibility: The cooling tower is not visible from this location

17



Resource 34: Higgins Farm – Route 423, Odessa
State/National Register Listed
Visibility: The cooling tower is visible from this location

18



Resource 37: Belleview – Route 428, Middletown
State/National Register Listed
Visibility: The cooling tower is visible from this location

19



Resource 40: Mount Jones – 2569 Dupont Parkway (US Route 13), Odessa
State/National Register Listed
Visibility: The cooling tower is visible from this location

20



Resource 44: Okolona – Route 429, Middletown
State/National Register Listed
Visibility: The cooling tower is visible from this location

21



Resource 45: Serek Shallcross House – US Route 13, Odessa
State/National Register Listed
Visibility: The cooling tower is visible from this location

22



Resource 46: J. Vandegrift House – Route 44, Odessa
State/National Register Listed
Visibility: The cooling tower is visible from this location

23



Resource 47: Old Drawyers Church – US Route 13, 1 mile north of Odessa
State/National Register Listed
Visibility: The cooling tower is not visible from this location

24



Resource 48: Williams House – Marl Pit Road, Odessa
State/National Register Listed
Visibility: The cooling tower is visible from this location

25



Resource 55: J. Shallcross House – Route 4, Odessa
State/National Register Listed
Visibility: The cooling tower is visible from this location

26



Resource 57: Pharo House – Odessa and Silver Lake Roads, Middletown
State/National Register Listed
Visibility: The cooling tower is visible from this location

27



Resource 59: Fairview – Odessa
State/National Register Listed
Visibility: The cooling tower is not visible from this location

28



Resource 60: Green Meadow – Thomas Landing Road, Odessa
State/National Register Listed
Visibility: The cooling tower is visible from this location

29



Resource 62: David W Thomas House – 326 Thomas Landing Road, Odessa
State/National Register Listed
Visibility: The cooling tower is visible from this location

30



Resource 63: Noxtown Road – South of Middletown off Route 896
State/National Register Listed
Visibility: The cooling tower is visible from this location

31



Resource 64: Old St. Anne's Church, 15 East Green Street, Middletown
State/National Register Listed
Visibility: The cooling tower is visible from this location

32



Resource 65: Hill Island Farm – 3379 Dupont Parkway (US Route 13), Odessa
State/National Register Listed
Visibility: The cooling tower is visible from this location

33



Resource 66: Arnold S. Naudain House – South of Middletown on Route 71
State/National Register Listed
Visibility: The cooling tower is visible from this location

34



Resource 68: Johnson Farm – County Rd 453, Taylor's Bridge
State/National Register Listed
Visibility: The cooling tower is visible from this location

35



Resource 72: Townsend Historic District – Townsend
State/National Register Listed
Visibility: The cooling tower is not visible from this location

36



Resource 73: Old Union Methodist Church – 205 Union Church Rd, Blackbird Crossroads
State/National Register Listed
Visibility: There is a marginal view of cooling tower from this location during the winter.

37



Resource 76: 9 West Market Street – 9 West Market Street, Port Penn
Eligible for listing as an extension of the Port Penn Historic District
Visibility: There is a marginal view of cooling tower from this location during the winter

38



Resource 77: Elmer Bender House –7 West Market Street, Port Penn
Eligible for listing as an extension of the Port Penn Historic District
Visibility: There is a marginal view of cooling tower from this location during the winter

39



Resource 78: Charles Hickman Dwelling Complex– 5 West Market Street, Port Penn
Eligible for listing as an extension of the Port Penn Historic District
Visibility: There is a marginal view of cooling tower from this location during the winter

40



Resource 79: David Corbit House – 3 West Market Street, Port Penn
Eligible for listing as an extension of the Port Penn Historic District
Visibility: There is a marginal view of cooling tower from this location during the winter