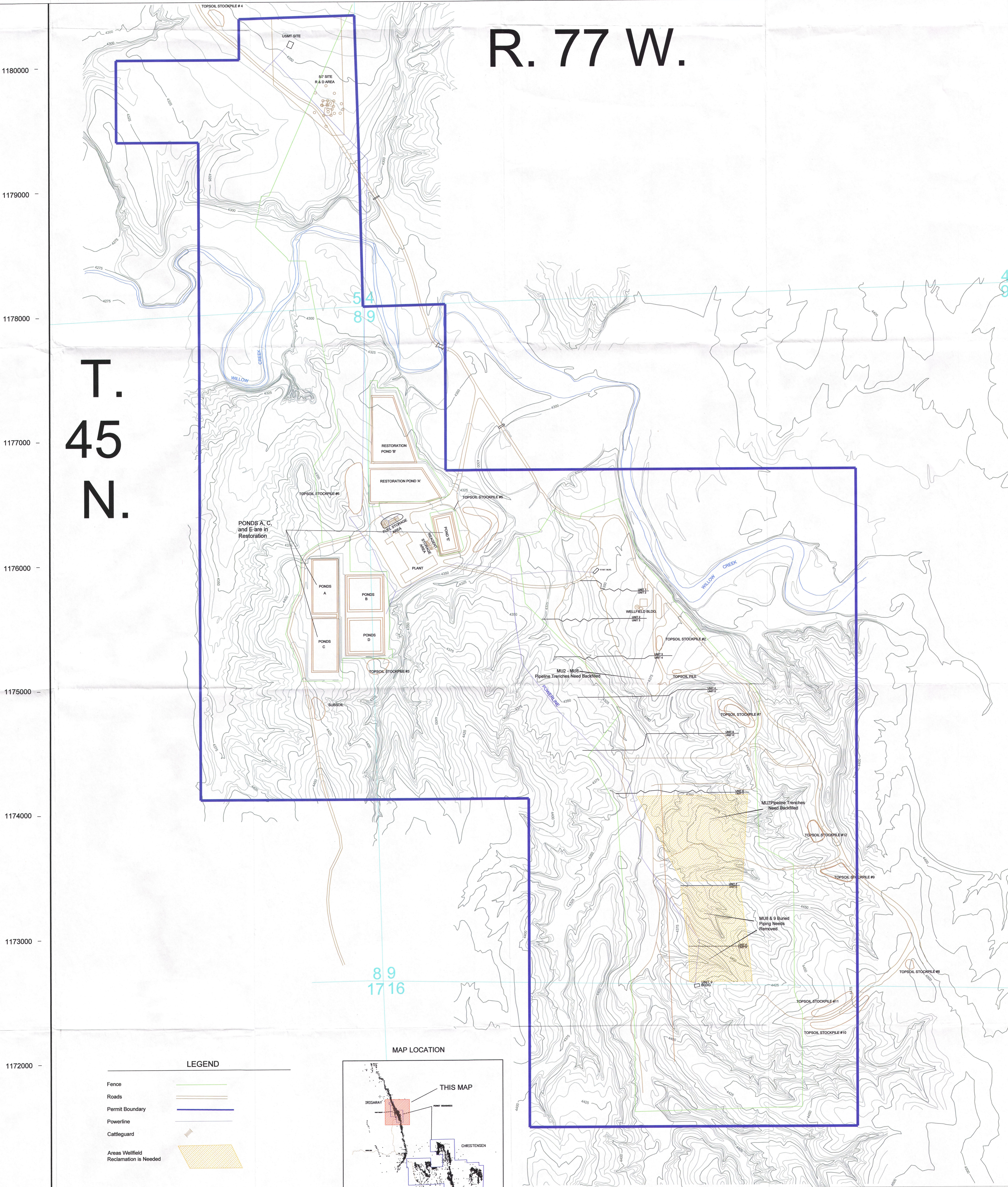


R. 77 W.

T. 45 N.



1180000 -
 1179000 -
 1178000 -
 1177000 -
 1176000 -
 1175000 -
 1174000 -
 1173000 -
 1172000 -
 1171000 -

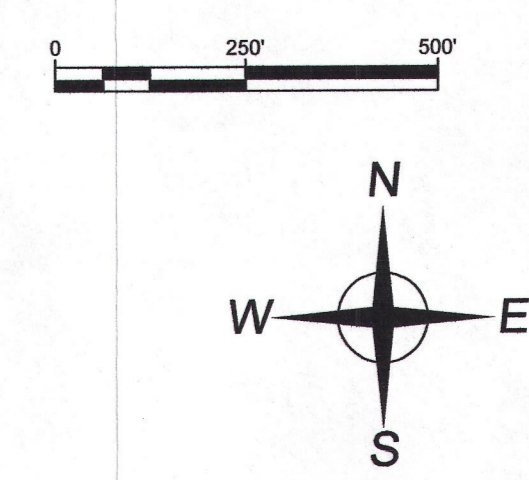
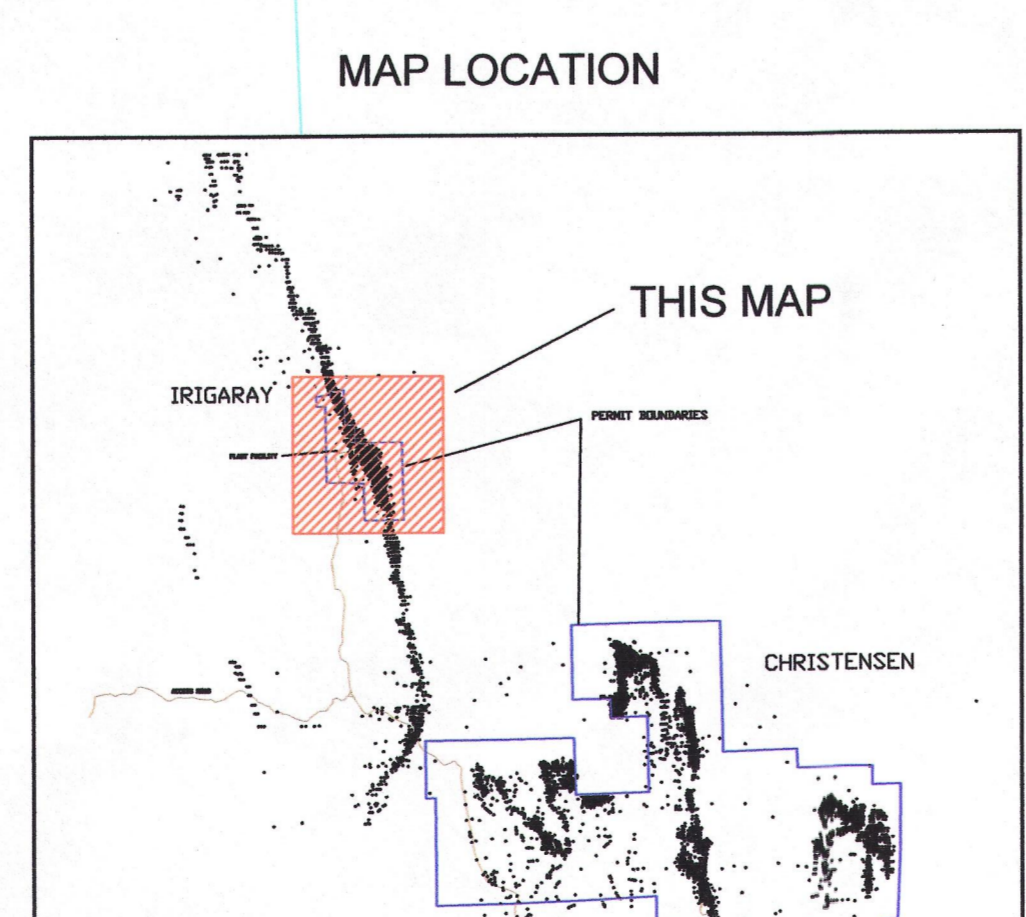
54
89

49

89
1716

LEGEND

Fence	
Roads	
Permit Boundary	
Powerline	
Cattleguard	
Areas Wellfield Reclamation is Needed	



uraniumone™
 investing in our energy
 907 North Poplar St., Suite 280, Casper, WY 82601 307-234-8235

Ingaray Project
Area Facilities Location Map
 Permit to Mine #478
 2012-2013 Annual Report to WDEQ-LQD
 Johnson & Campbell Counties, Wyoming

Date: September 2012	By: CMI August 2009	Checked:		
Rev. No.	Description	Date	By	Sheet:
1	Updated 2009 CMI Original for 2010	August 2010	CEO: U1	
2	Updated for 2011-2012 Annual Rpt.	Sept. 2012	CEO: U1	
3	Added Areas Needing Reclamation	March 2013	CEO: U1	

D01