

Security-Related Information – Withheld Under 10 CFR 2.390

Figure 3-11. Plan View of Equivalent Mechanical Horizontal Convective Models of Tank-Water System for IRWST

Security-Related Information – Withheld Under 10 CFR 2.390

Figure 3-12. Section View of Reactor Containment Building Showing Hydrodynamic Impulsive and Convective Models of Tank-Water System for IRWST

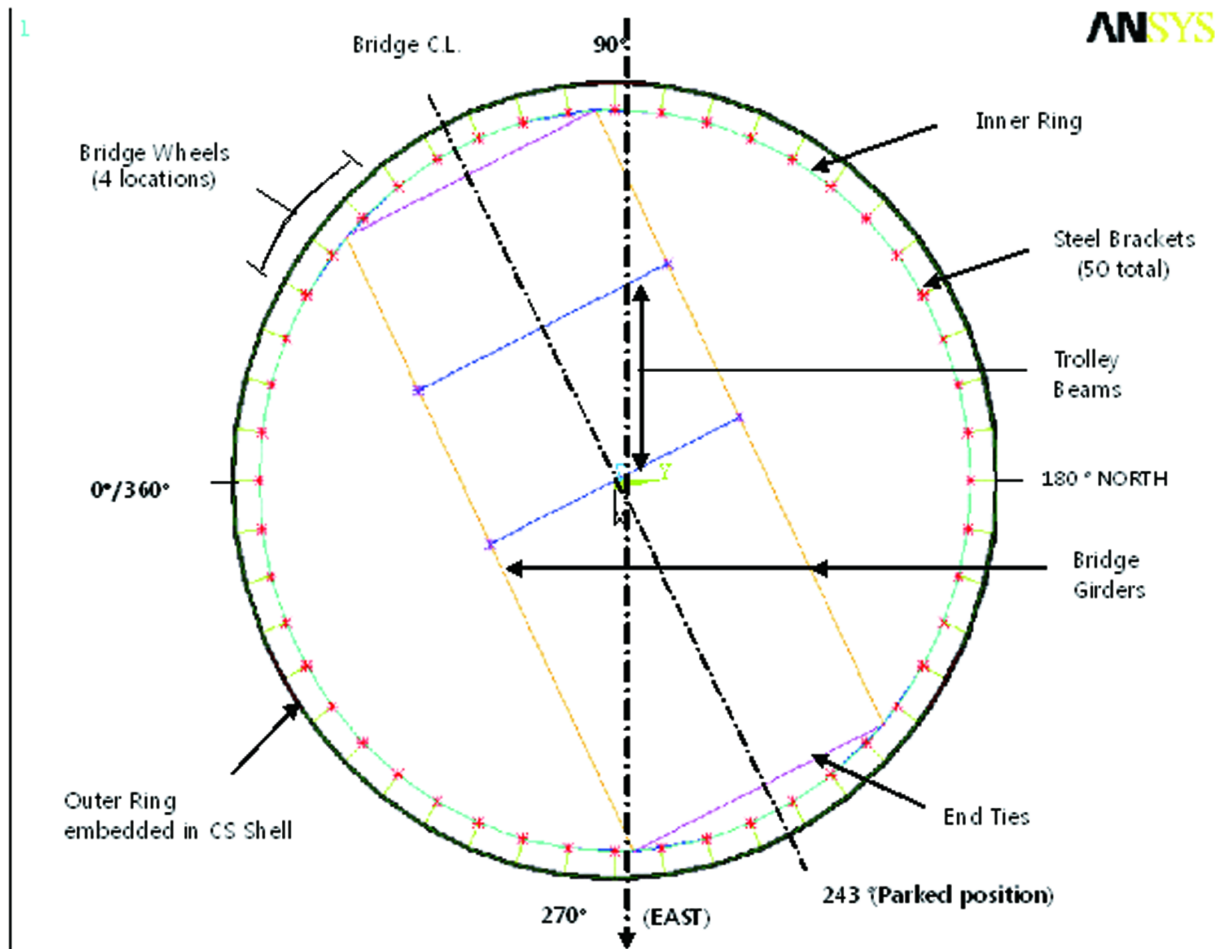


Figure 3-13. Polar Crane ANSYS Modeling

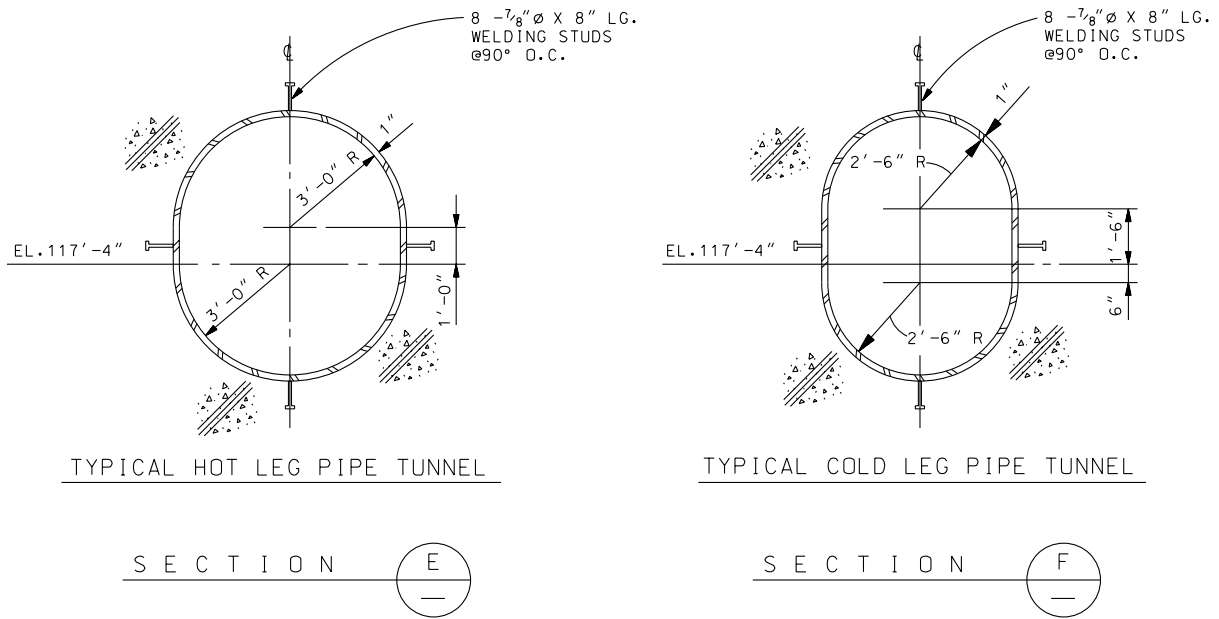


Figure 3-14. Hot and Cold Legs Openings (Typical Cross Section)

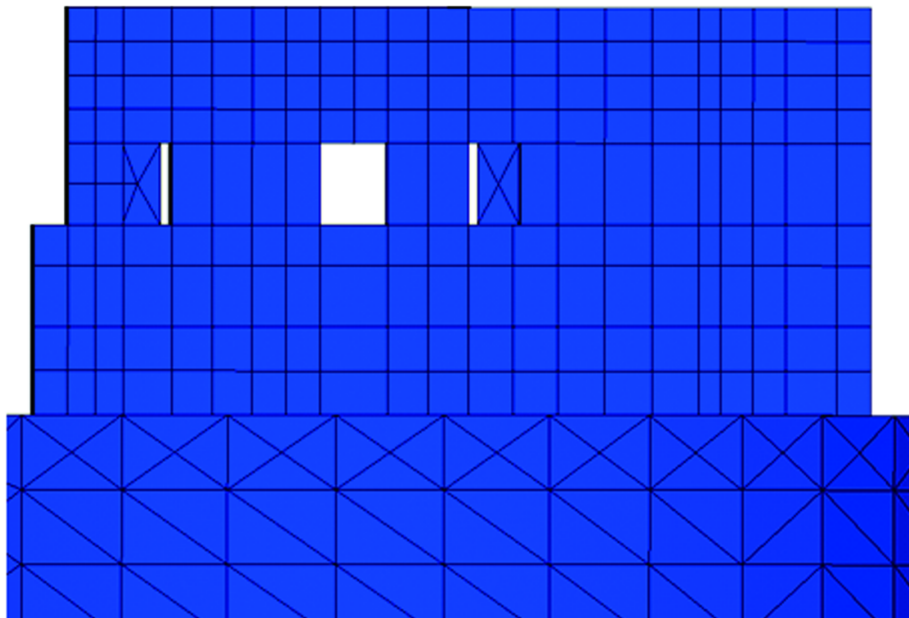
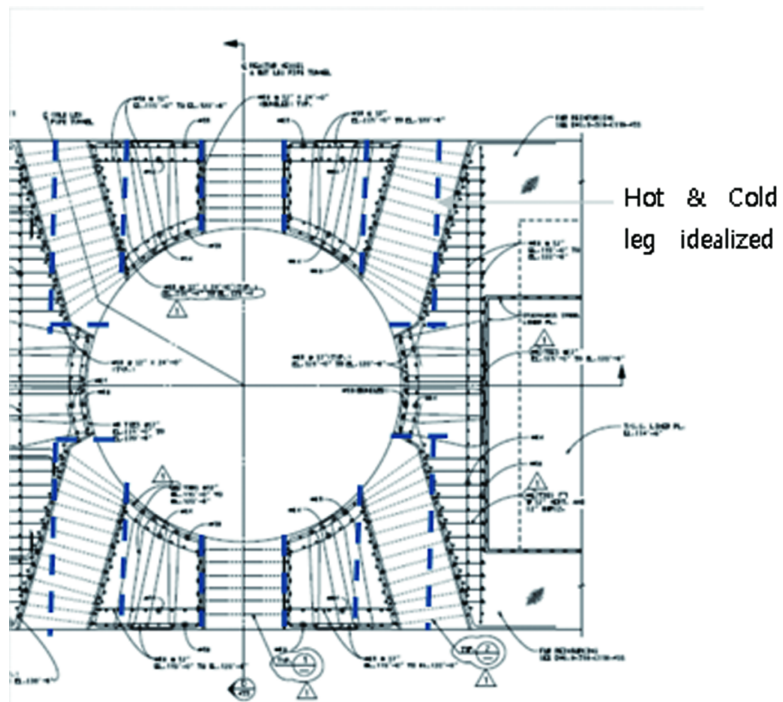


Figure 3-15. Openings in PSW Model for Hot and Cold Legs

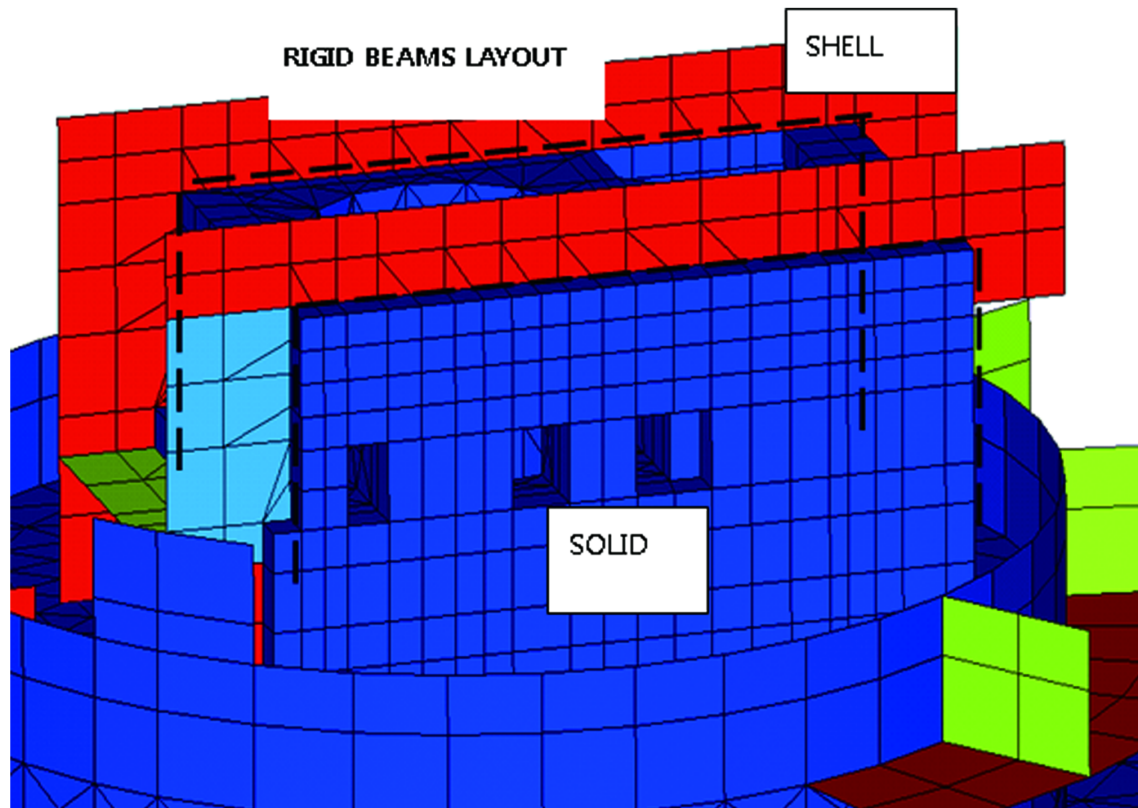


Figure 3-16. Transition between PSW and Massive Concrete Block at El. 130'-0"

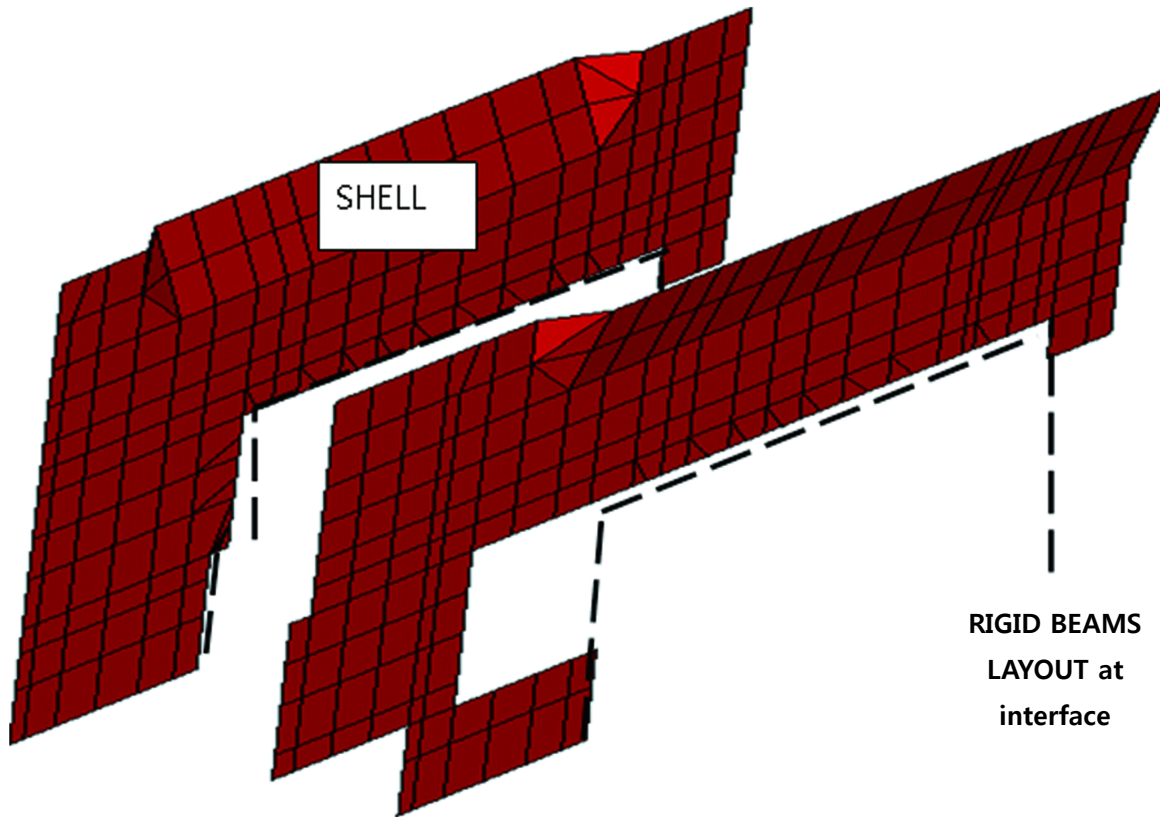


Figure 3-17. Interface between Shell and Solid Elements

C.L. Reactor Vessel



Inner circle  
idealized as  
circular section  
shown in dash  
line

Step inside RV  
Cavity at —  
Elevation 94'-6"  
for RV  
Columns  
Support

FEM Idealization for RV Cavity at RV

Figure 3-18. Idealization for the RV Openings in PSW



Security-Related Information – Withheld Under 10 CFR 2.390

Figure 3-19. Idealization of the SSW and Common Basemat Top

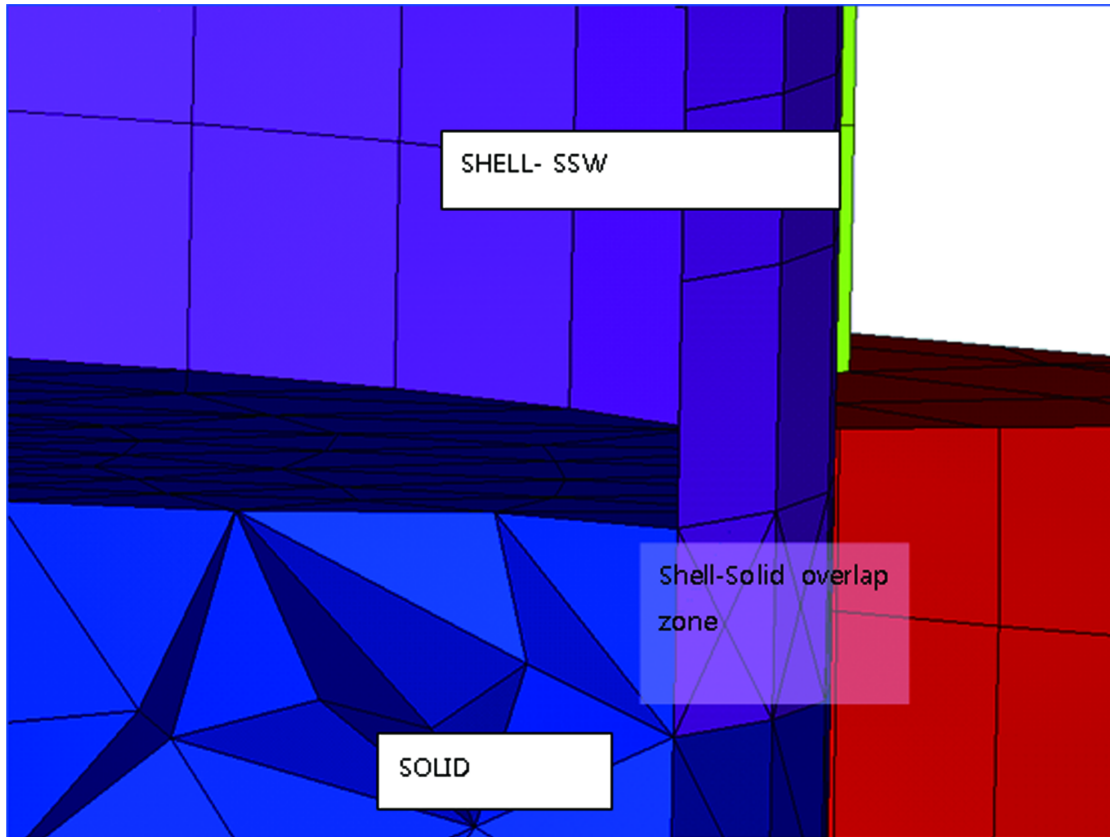


Figure 3-20. Shell – Solid Overlap between El. 94'-6" to El. 100'-0"