



Wyoming Oil and Gas Conservation Commission



Disclaimer

- Location Map 
- Pavillion Working Group 
- Confidentiality**
Policy July 2012 
- Sage Grouse Core Area Protection Policy 
- For Windows 8 Users 

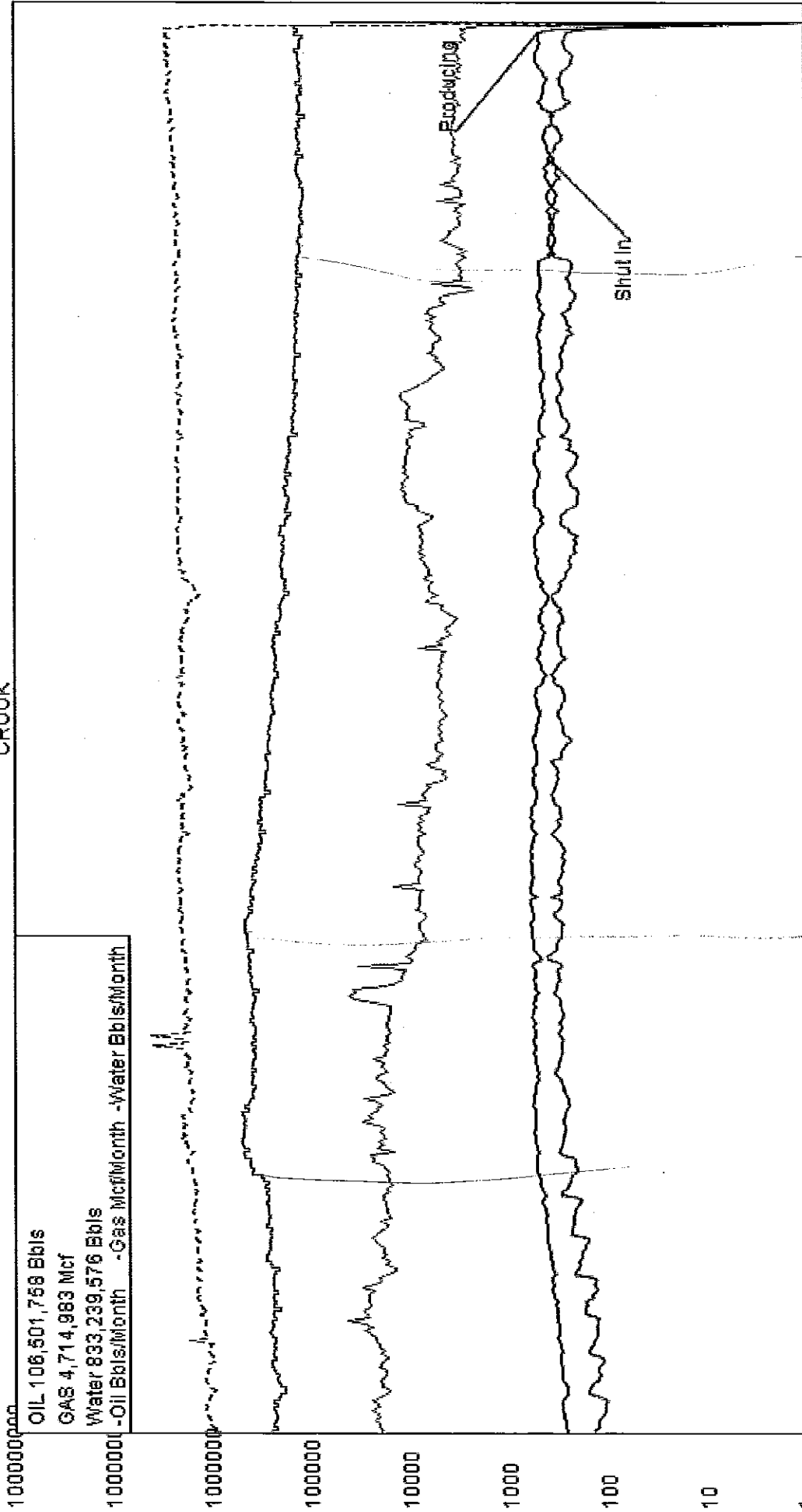
- [Approvals](#)
- [AOR](#)
- [Agencies](#)
- [APD's](#)
- [Basins](#)
- [CoalBed](#)
- [Completions](#)
- [Cores](#)
- [County](#)
- [Down Load](#)
- [Electronic Filing](#)
- [Environmental](#)
- [Field](#)

- [First Produced Formations](#)
- [Forms](#)
- [Gas/Water Analysis](#)
- [Gas Plants](#)
- [Geological Reports](#)
- [Hearings](#)
- [Horizontal Wells](#)
- [Idle / Orphan](#)
- [Injection](#)
- [Lease Menu](#)
- [Logs](#)
- [Map Server](#)
- [Meeting Notices](#)

- [Operators](#)
- [Orders](#)
- [Production](#)
- [Pressures/Dst](#)
- [Rules/Statutes](#)
- [Sales](#)
- [Spacing](#)
- [Spuds](#)
- [Statistics](#)
- [Sundries](#)
- [Units](#)
- [Weekly Report](#)
- [Wells](#)

4 9 9 1 8 8 9

CROCK



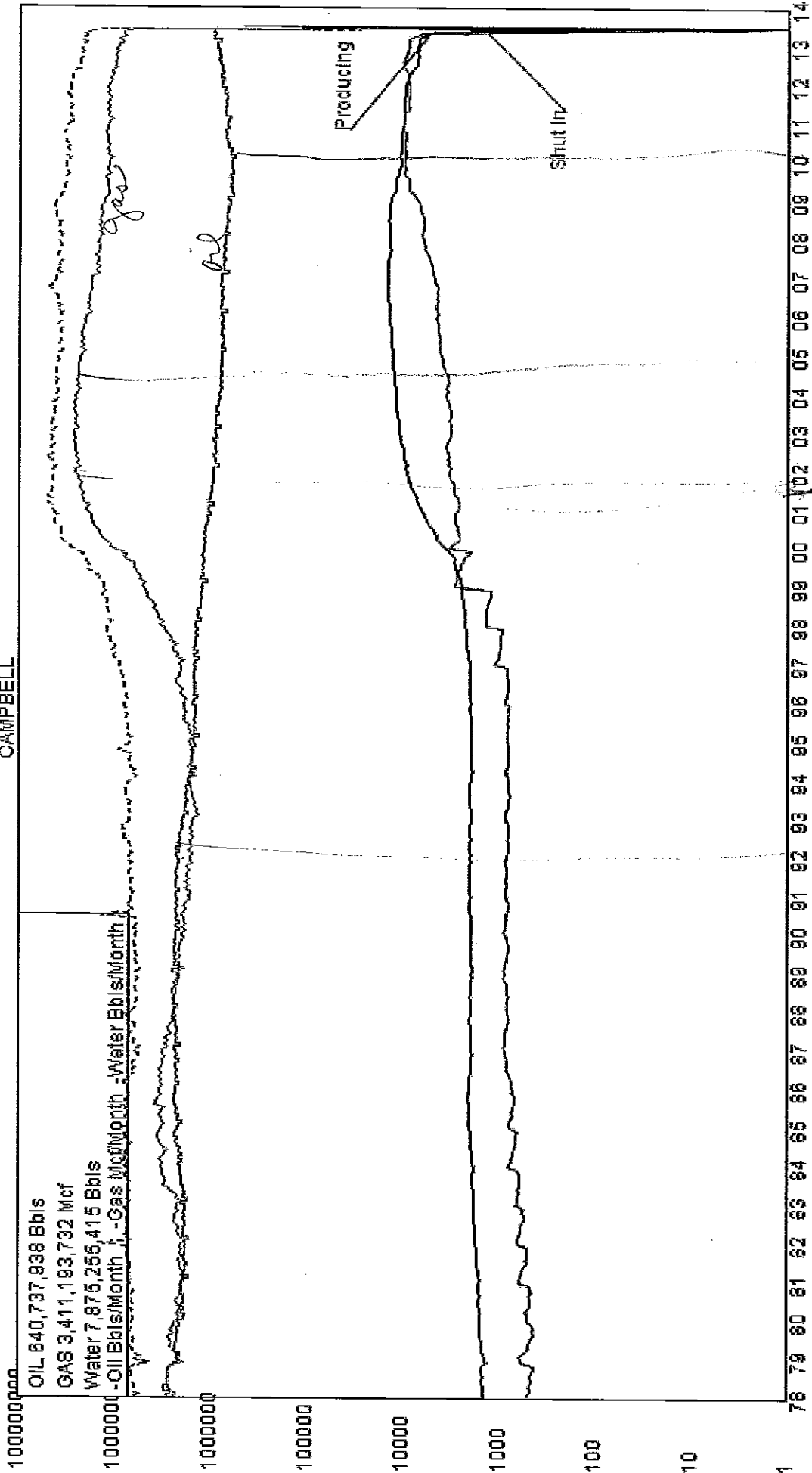
OIL 106,501,758 Bbls
GAS 4,714,983 Mcf
Water 833,239,576 Bbls
-Oil Bbls/Month -Gas Mcf/Month -Water Bbls/Month

1 78 79 80 81 82 83 84 85 86 87 88 89 90 91 92 93 94 95 96 97 98 99 00 01 02 03 04 05 06 07 08 09 10 11 12 13 14

Handwritten signature

CAMPBELL

1000000000
OIL 640,737,938 Bbls
GAS 3,411,193,732 Mcf
Water 7,875,255,415 Bbls
-Oil Bbls/Month -Gas Mcf/Month -Water Bbls/Month



Handwritten signature

Formation Menu
 Wyoming Oil and Gas
 Conservation Commission

Select County

Crook

Select Year

1990

Category

Oil

Production By

Reservoir

Select Ranking

All

Table or Graph

Table

Go

Reset

Wyoming Oil And Gas Conservation Commission		
Crook County Production By Reservoir		
Report Date 08/01/13		
Production For Year 1990		
Based On Oil Production		
Reservoir	Oil Bbls	Gas Mcf
MINNELUSA	4,932,524	40,214
DAKOTA	189,266	39,618
MUDDY	120,108	21,491
LAKOTA	90,455	0
FALL RIVER	64,345	0
BUTLER	18,818	0
NEWCASTLE	5,987	3
TURNER	5,765	0
WALL CREEK	4,331	0
FRONTIER	67	0
WALL CREEK-2	37	0

Formation Menu
 Wyoming Oil and Gas
 Conservation Commission

Select County
 Crook

Select Year
 1995

Category
 Oil

Production By
 Reservoir

Select Ranking
 All

Table or Graph
 Table

Go Reset

Wyoming Oil And Gas Conservation Commission		
Crook County Production By Reservoir		
Report Date 08/01/13		
Production For Year 1995		
Based On Oil Production		
Reservoir	Oil Bbls	Gas Mcf
MINNELUSA	2,347,635	14,961
DAKOTA	192,229	38,759
MUDDY	91,456	7,853
LAKOTA	38,563	0
FALL RIVER	33,177	0
BUTLER	13,375	0
TURNER	6,461	0
NEWCASTLE	5,481	0
WALL CREEK	3,252	0
SKULL CREEK	2,071	0
WALL CREEK-2	17	0
FRONTIER	16	0

Formation Menu
 Wyoming Oil and Gas
 Conservation Commission

Select County

Crook

Select Year

2000

Category

Oil

Production By

Reservoir

Select Ranking

All

Table or Graph

Table

Go Reset

Wyoming Oil And Gas Conservation Commission		
Crook County Production By Reservoir		
Report Date 08/01/13		
Production For Year 2000		
Based On Oil Production		
Reservoir	Oil Bbls	Gas Mcf
MINNELUSA	1,981,085	22,707
DAKOTA	125,023	29,183
MUDDY	104,526	39,578
LAKOTA	49,307	0
FALL RIVER	41,234	0
NEWCASTLE	8,458	0
BUTLER	7,865	0
WALL CREEK	2,108	0
TURNER	802	0
WALL CREEK-2	306	0

Formation Menu
 Wyoming Oil and Gas
 Conservation Commission

Select County
 Crook

Select Year
 2005

Category
 Oil

Production By
 Reservoir

Select Ranking
 All

Table or Graph
 Table

Go Reset

Wyoming Oil And Gas Conservation Commission		
Crook County Production By Reservoir		
Report Date 08/01/13		
Production For Year 2005		
Based On Oil Production		
Reservoir	Oil Bbls	Gas Mcf
MINNELUSA	1,192,003	8,082
MUDDY	223,683	44,617
DAKOTA	130,123	15,079
LAKOTA	17,721	0
FALL RIVER	9,855	0
BUTLER	4,323	0
NEWCASTLE	3,831	0
WALL CREEK	2,042	0
TURNER	556	0
WALL CREEK-2	228	0
FRONTIER	0	0
MUDDY-DAKOTA	0	0

Formation Menu
 Wyoming Oil and Gas
 Conservation Commission

Select County
 Crook

Select Year
 2010

Category
 Oil

Production By
 Reservoir

Select Ranking
 All

Table or Graph
 Table

Go Reset

Wyoming Oil And Gas Conservation Commission		
Crook County Production By Reservoir		
Report Date 08/01/13		
Production For Year 2010		
Based On Oil Production		
Reservoir	Oil Bbls	Gas Mcf
MINNELUSA	1,192,366	2,183
MUDDY	266,180	24,757
DAKOTA	103,652	15,961
LAKOTA	13,773	0
BUTLER	4,071	0
FALL RIVER	2,669	0
NEWCASTLE	2,438	0
WALL CREEK	1,422	0
TURNER	704	318
WALL CREEK-2	239	0
MUDDY-DAKOTA	0	0
FRONTIER	0	0

Formation Menu
 Wyoming Oil and Gas
 Conservation Commission

Select County
 Crook ▼

Select Year
 2012 ▼

Category
 Oil ▼

Production By
 Reservoir ▼

Select Ranking
 All ▼

Table or Graph
 Table ▼

Wyoming Oil And Gas Conservation Commission		
Crook County Production By Reservoir		
Report Date 08/01/13		
Production For Year 2012		
Based On Oil Production		
Reservoir	Oil Bbls	Gas Mcf
MINNELUSA	1,155,341	2,208
MUDDY	285,346	24,025
DAKOTA	93,892	13,464
LAKOTA	15,261	0
FALL RIVER	5,698	0
BUTLER	2,824	0
NEWCASTLE	2,663	0
WALL CREEK	2,408	0
TURNER	793	138
WALL CREEK-2	229	0
MUDDY-DAKOTA	0	0
FRONTIER	0	0

Formation Menu
Wyoming Oil and Gas
Conservation Commission

Select County

Campbell ▼

Select Year

1990 ▼

Category

Oil ▼

Production By

Reservoir ▼

Select Ranking

All ▼

Table or Graph

Table ▼

Go Reset

Wyoming Oil And Gas Conservation Commission			
Campbell County Production By Reservoir			
Report Date 08/02/13			
Production For Year 1990			
Based On Oil Production			
Reservoir	Oil Bbls	Gas Mcf	Wat
MINNELUSA	14,898,008	496,230	59,922,46
SHANNON	5,159,028	1,618,525	1,781,993
DAKOTA	3,595,615	1,740,493	45,825
MUDDY	1,747,462	13,997,607	19,914,24
SUSSEX	676,408	1,046,710	46,338
PARKMAN	366,921	61,567	866,248
FERGUSON	75,651	26,623	11,820
TURNER	67,374	1,588,727	2,188
FRONTIER	41,968	254,387	331
MOWRY-MUDDY	28,049	68,129	24,870
NIOBRARA	22,312	40,254	2
MUDDY-TURNER	19,069	41,344	628
MINNELUSA-DAKOTA	15,568	0	1,735
MOWRY	9,336	8,686	208
FERGUSON-PARKMAN	5,774	3,045	14,620
MUDDY LOWER	2,657	0	335
NEWCASTLE	2,266	0	1,670
SKULL CREEK	1,984	55,857	0
DAKOTA-TURNER	1,917	12,083	824

Formation Menu
Wyoming Oil and Gas
Conservation Commission

Select County

Campbell

Select Year

1995

Category

Oil

Production By

Reservoir

Select Ranking

All

Table or Graph

Table

Go

Reset

Wyoming Oil And Gas Conservation Commission			
Campbell County Production By Reservoir			
Report Date 08/02/13			
Production For Year 1995			
Based On Oil Production			
Reservoir	Oil Bbls	Gas Mcf	Wat
MINNELUSA	11,239,976	355,421	58,811,49
SHANNON	2,670,616	1,171,692	1,672,298
DAKOTA	1,155,177	2,103,388	46,668
MUDDY	1,056,351	9,319,579	7,989,182
SUSSEX	933,574	546,839	424,745
PARKMAN	282,214	62,441	804,402
TURNER	102,420	2,225,037	12,662
FERGUSON	49,070	15,449	113,777
FRONTIER	37,616	238,554	686
NIOBRARA	13,272	47,480	53
MUDDY-TURNER	12,031	32,251	360
MOWRY-MUDDY	9,850	37,979	29,910
MOWRY	7,270	7,944	0
NIOBRARA-TURNER	3,835	0	69
SKULL CREEK	1,704	45,607	16
MUDDY LOWER	1,330	0	367
FERGUSON-PARKMAN	1,064	10	8,890
MUDDY-DAKOTA	783	5,070	73
NEWCASTLE	314	99	298

Formation Menu
Wyoming Oil and Gas
Conservation Commission

Select County

Campbell

Select Year

2006

Category

Oil

Production By

Reservoir

Select Ranking

All

Table or Graph

Table

Go

Reset

Wyoming Oil And Gas Conservation Commission			
Campbell County Production By Reservoir			
Report Date 08/02/13			
Production For Year 2000			
Based On Oil Production			
Reservoir	Oil Bbls	Gas Mcf	Wat
MINNELUSA	7,491,155	132,546	72,289,82
SHANNON	2,511,519	1,371,787	781,553
SUSSEX	1,762,311	592,747	3,991,565
MUDDY	707,935	10,207,414	5,033,441
DAKOTA	479,327	16,142,128	95,290
PARKMAN	265,262	53,423	332,725
PARKMAN-TURNER	80,491	98,220	60,457
TURNER	49,105	1,141,075	5,810
FERGUSON	34,586	9,321	91,260
FRONTIER	31,521	282,731	219
MINNELUSA-DAKOTA	23,678	0	163,382
MINNELUSA-B	10,655	0	1,656
MUDDY-TURNER	10,635	23,558	203
MOWRY-MUDDY	10,632	21,257	22,528
MOWRY	10,024	1,253	0
NIOBRARA	9,307	39,847	139
PARKMAN-TURNER-NIOBRARA	5,861	11,289	4,150
MORRISON	1,245	106,268	594
SKULL CREEK	1,223	25,914	69

Formation Menu
Wyoming Oil and Gas
Conservation Commission

Select County

Campbell

Select Year

2005

Category

Oil

Production By

Reservoir

Select Ranking

All

Table or Graph

Table

Go

Reset

Wyoming Oil And Gas Conservation Commission			
Campbell County Production By Reservoir			
Report Date 08/02/13			
Production For Year 2005			
Based On Oil Production			
Reservoir	Oil Bbls	Gas Mcf	Wat
MINNELUSA	5,141,544	80,361	77,350,51
SHANNON	1,369,588	752,817	1,667,647
SUSSEX	927,138	262,794	2,981,754
MUDDY	586,549	7,881,270	3,254,983
PARKMAN	512,465	43,996	1,059,576
DAKOTA	131,863	5,565,944	76,885
PARKMAN-TURNER	46,265	35,463	58,735
MINNELUSA-B	41,709	0	2,631
TURNER	39,616	782,613	4,578
FRONTIER	26,394	102,046	504
FERGUSON	21,559	6,900	36,171
MOWRY-MUDDY	18,257	31,007	13,733
MOWRY	15,410	20,694	251
MINNELUSA-DAKOTA	10,159	1,512	130,813
NIOBRARA	8,656	35,196	3
MUDDY-TURNER	7,853	25,212	173
FRONTIER-DAKOTA	5,411	191,622	0
MUDDY-PARKMAN-TURNER	5,013	3,024	3,321
SUSSEX-PARKMAN	4,379	438	11,987

Formation Menu
 Wyoming Oil and Gas
 Conservation Commission

Select County

Campbell

Select Year

2010

Category

Oil

Production By

Reservoir

Select Ranking

All

Table or Graph

Table

Go Reset

Wyoming Oil And Gas Conservation Commission			
Campbell County Production By Reservoir			
Report Date 08/02/13			
Production For Year 2010			
Based On Oil Production			
Reservoir	Oil Bbls	Gas Mcf	Wat
MINNELUSA	4,484,853	50,080	88,912,30
SHANNON	945,542	604,540	2,283,425
SUSSEX	792,351	204,817	3,859,547
PARKMAN	722,836	126,908	1,782,332
MUDDY	504,734	7,018,051	3,133,962
TURNER	158,062	1,491,079	11,898
MINNELUSA-B	129,368	0	18,373
PARKMAN-TURNER	78,697	65,440	161,171
DAKOTA	74,260	1,953,222	36,646
MOWRY	27,477	53,015	20,799
FRONTIER	20,890	73,873	422
NIOBRARA	15,138	65,142	1,670
FERGUSON	11,393	14	7,080
MOWRY-MUDDY	10,182	8,452	10,500
PARKMAN-TURNER-NIOBRARA	9,179	5,511	5,294
MUDDY-TURNER	6,938	13,878	145
MINNELUSA-DAKOTA	5,423	990	158,605
MOWRY-PARKMAN-TURNER-MUDDY	5,294	3,582	1,705
FRONTIER-DAKOTA	3,787	167,606	0

Formation Menu
Wyoming Oil and Gas
Conservation Commission

Select County

Campbell ▼

Select Year

2012 ▼

Category

Oil ▼

Production By

Reservoir ▼

Select Ranking

All ▼

Table or Graph

Table ▼

Go

Reset

Wyoming Oil And Gas Conservation Commission			
Campbell County Production By Reservoir			
Report Date 08/02/13			
Production For Year 2012			
Based On Oil Production			
Reservoir	Oil Bbls	Gas Mcf	Wat
MINNELUSA	4,226,123	50,951	90,938,25
TURNER	2,044,375	11,347,030	615,152
SHANNON	888,732	545,964	2,631,982
PARKMAN	903,295	273,344	2,097,100
SUSSEX	664,681	212,757	3,524,784
MUDDY	481,816	6,646,136	3,139,251
MINNELUSA-B	79,209	0	64,169
PARKMAN-TURNER	71,344	70,624	190,938
MOWRY	69,152	468,630	50,213
DAKOTA	58,443	1,355,196	26,977
NIOBRARA	51,195	72,546	14,883
FRONTIER	19,638	68,526	498
FERGUSON	10,985	0	17,094
PARKMAN-TURNER-NIOBRARA	9,301	5,408	37,757
MOWRY-MUDDY	7,858	9,216	8,222
MUDDY-TURNER	6,839	15,025	213
MINNELUSA-DAKOTA	4,300	1,116	197,829
MOWRY-PARKMAN-TURNER-MUDDY	4,205	2,876	1,411
FRONTIER-DAKOTA	2,973	135,730	56