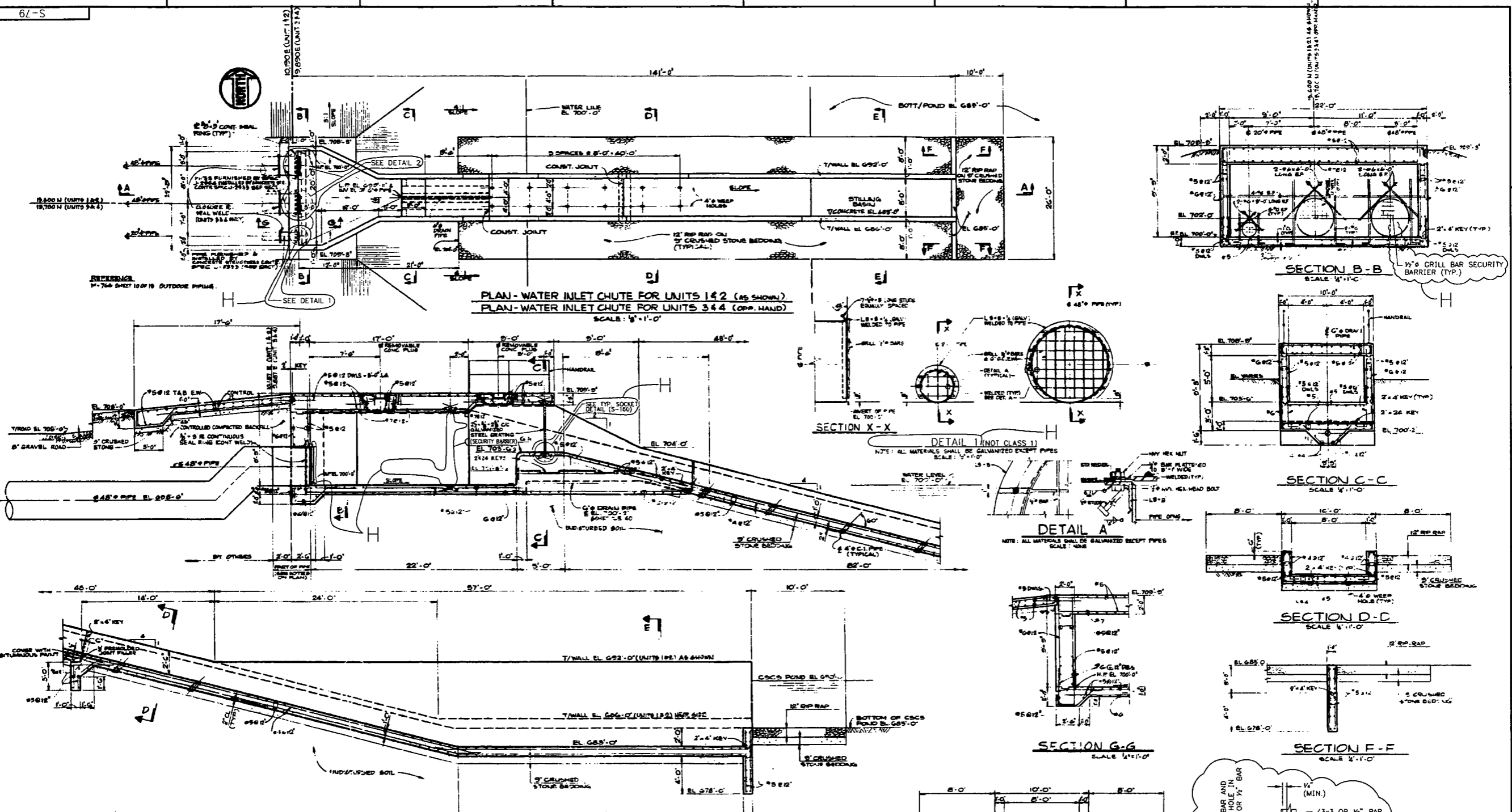


ATTACHMENT 4

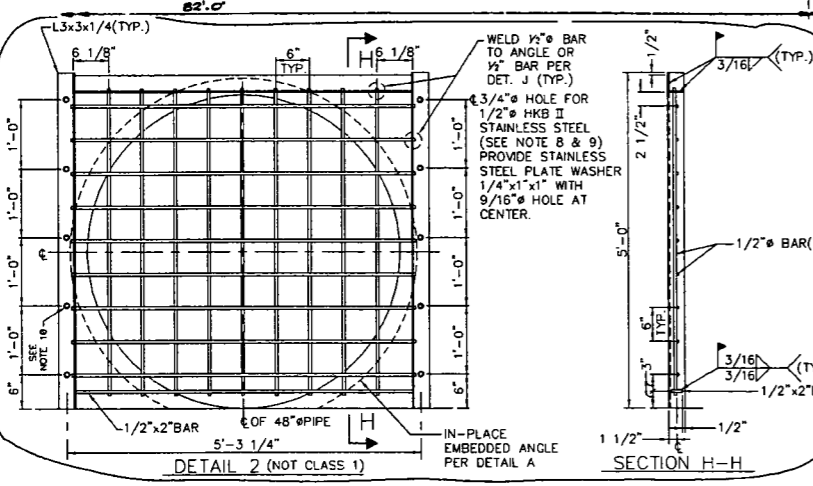
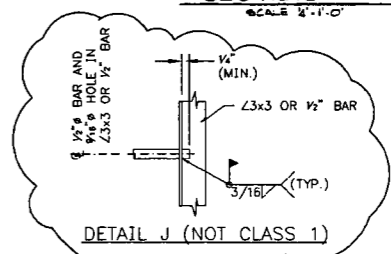
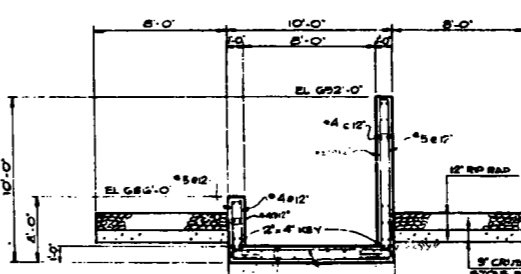
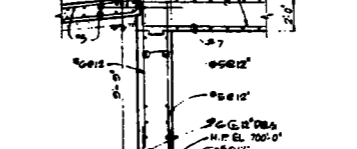
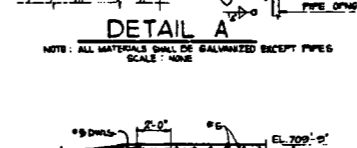
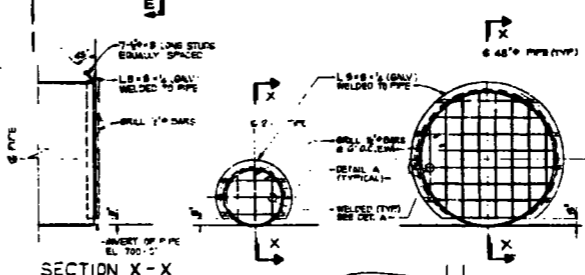
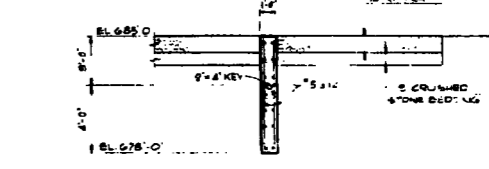
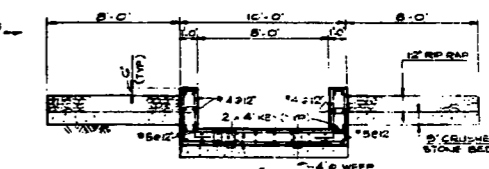
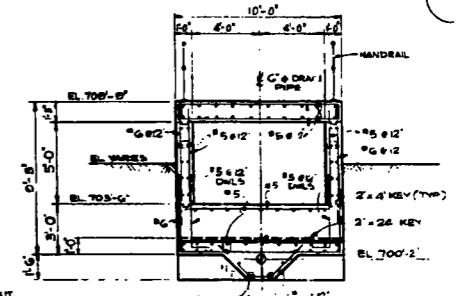
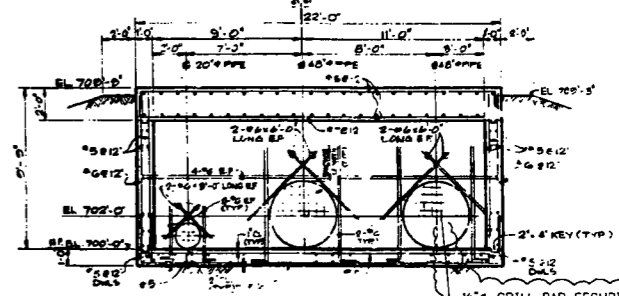
LaSalle County Station Drawing S-79

"CSCS Pond Water Inlet Chutes Plan & Sections," Revision H

1 page follows



PLAN - WATER INLET CHUTE FOR UNITS 1&2 (AS SHOWN)
 PLAN - WATER INLET CHUTE FOR UNITS 3&4 (OPP. HAND)
 SCALE: 1/8" = 1'-0"



SECTION A-A
 SCALE: 1/4" = 1'-0"

- NOTES**
- FOR NOTES SEE DRAWING 6-199 IS EDD
 - ALL WORK ON THIS DRAWING SHALL BE FURNISHED & INSTALLED BY THE CONCRETE STRUCTURES CONTRACTOR IN ACCORDANCE WITH PROJECT SPECIFICATION J-2539 FOR LOCATION SEE DWG S-50
 - ALL CONCRETE SHOWN ON THIS DRAWING SHALL BE CLASS B-33 (13,500 PSI) AIR ENTRAINED AS SPECIFIED IN SAFETY LUND: STAINLESS SPECIFICATION 175.
 - ALL ENCASED MATERIALS & FRAMES ON THIS DRAWING SHALL BE GALVANIZED (3M).
 - ALL DIMENSIONS OF THE GRATE PER DETAIL 2 ARE $\pm 1/4"$.
 - ALL MATERIAL FOR THE GRATE PER DETAIL 2 SHALL BE STAINLESS STEEL PER ASTM A276, TYPE 304.
 - UPSET CEA THREADS TO PREVENT REMOVAL AFTER INSTALLATION OF GRATE.
 - AFTER TORQUE EMBEDMENT SHALL BE A MINIMUM OF 2". PROVIDE WASHERS/SPACER PLATES AS NECESSARY. THE LIMIT ON THE NUMBER OF WASHERS PER THE NSWP DOES NOT APPLY.
 - ANCHOR BOLT INSTALLED CAN NOT DEVELOP TORQUE. ACCEPT AS IS. (FOR NORTH COVER ONLY AS SHOWN IN PLAN FOR UNITS 1 & 2).

REFERENCE DRAWINGS					
5-50	SITE PLAN AREA				
CSCS POND WATER INLET CHUTES PLAN & SECTIONS					
REV	DATE	DESCRIPTION	PREP.	REV.	APP.
H	EDSF	FOR RECORD PER EC 56449	EDSF	EDSF	EDSF
---	---	---	---	---	---
---	---	---	---	---	---
---	---	---	---	---	---
Exelon Nuclear Site Station 1 Unit 1&2			NUCLEAR SAFETY RELATED EQUIPMENT IS SHOWN ON THIS DRAWING		
SCALE: NONE			SHEET NO. S-79		
DRAWN BY: [blank]			SIZE: F S02		
DATE: [blank]			[blank]		
DWG BY: 15848			[blank]		