

# C

## Seismic Walkdown Checklists (SWCs)

Table C-1 Summary of Seismic Walkdown Checklists for DCCNP1 Online Walkdowns			
COMPONENT ID	DESCRIPTION	Anchorage Verification Confirmed	PAGE
12-CRV-51	UNIT 1 & UNIT 2 CONDENSATE STORAGE TANKS CROSSTIE	N	C-5
12-HE-16N	Spent Fuel Pit Heat Exchanger (Note: This is the only SWEL2 Component included)	Y	C-8
12-HV-ACCP-3	COMPONENT COOLING WATER PUMPS VENTILATION SOUTH	N	C-10
12-HV-ESW-5	UNIT 1 WEST ESW PP ROOM SUPPLY VENTILATION FAN	Y	C-13
1-ABD-A	600VAC MOTOR CONTROL CENTER ABD-A	Y	C-19
1-ABD-B	600VAC MOTOR CONTROL CENTER ABD-B	N	C-28
1-ACRA-2	CONTROL ROOM AIR HANDLING SUBPANEL #2	Y	C-37
1-AM-A	600VAC MOTOR CONTROL CENTER AM-A	Y	C-44
1-BATT-AB	PLANT BATTERY AB	Y	C-49
1-BC-AB	PLANT BATTERY BATT-AB CONTROL PANEL	Y	C-54
1-BC-AB1	PLANT BATTERY BATT-AB BATTERY CHARGER #1	Y	C-59
1-BC-AB2	PLANT BATTERY BATT-AB CHARGER #2	N	C-65
1-BCTC-AB <sup>(1)</sup>	PLANT BATTERY CHARGERS BC-AB1 AND BC-AB2 TRANSFER	Y	C-71
1-BLI-130	STEAM GENERATOR OME-3-3 WIDE RANGE LEVEL INDICATOR TRANSMITTER	Y	C-75
1-BLP-132	STEAM GENERATOR OME-3-1 CHANNEL III REACTOR	N	C-79
1-CCV-AB	250VDC TRAIN 'B' CRITICAL SOLENOID VALVES	N	C-83
1-CCW	COMPONENT COOLING WATER CONTROL PANEL	N	C-87
1-CFI-420	COMPONENT COOLING WATER TO WEST COMPONENT COOLING	Y	C-91
1-CFI-429	WEST RHR HEAT EXCHANGER HE-17W COMPONENT COOLING	N	C-95
1-CLI-114	CONDENSATE STORAGE TANK TK-32 LEVEL INDICATOR	Y	C-99
1-CMO-420	WEST CCW HEAT EXCHANGER CCW OUTLET SHUTOFF VALVE	N	C-103

<b>Table C-1 Summary of Seismic Walkdown Checklists for DCCNP1 Online Walkdowns</b>			
<b>COMPONENT ID</b>	<b>DESCRIPTION</b>	<b>Anchorage Verification Confirmed</b>	<b>PAGE</b>
1-CRID-3	120VAC CONTROL ROOM INSTRUMENT DISTRIBUTION	Y	C-107
1-CRID-4-INV	120VAC CONTROL ROOM INSTRUMENT DISTRIBUTION SYSTEM	Y	C-111
1-DGAB	AB EMERGENCY DIESEL GENERATOR OME-150-AB CONTROL	Y	C-115
1-DGAB-INV	AB EMERGENCY DIESEL GENERATOR OME-150-AB INVERTER	N	C-126
1-ESW	ESSENTIAL SERVICE WATER CONTROL PANEL	N	C-132
1-EZC-A	600VAC MOTOR CONTROL CENTER EZC-A	Y	C-137
1-EZC-A1	600VAC MOTOR CONTROL CENTER EZC-A1	N	C-143
1-EZC-B	600VAC MOTOR CONTROL CENTER EZC-B	Y	C-147
1-EZC-B1	600VAC MOTOR CONTROL CENTER EZC-B1	N	C-153
1-FFI-240	AUX FEEDWATER TO SG OME-3-4 FLOW INDICATOR TRANSMITTER	Y	C-157
1-HE-15W	WEST COMPONENT COOLING WATER HEAT EXCHANGER	N	C-161
1-HE-17W	WEST RESIDUAL HEAT REMOVAL HEAT EXCHANGER	Y	C-166
1-HE-18W	WEST CONTAINMENT SPRAY HEAT EXCHANGER	Y	C-170
1-HV-ACRA-2	CONTROL ROOM VENTILATION SOUTH AIR CONDITIONING	N	C-177
1-HV-ACRF-2	CONTROL ROOM PRESSURIZATION/CLEANUP FILTER UNIT	N	C-180
1-HV-AES-2	AUXILIARY BUILDING VENTILATION ENGINEERED SAFETY	Y	C-184
1-HV-CEQ-1	CONTAINMENT HYDROGEN SKIMMER VENTILATION FAN #1	N	C-190
1-HV-CEQ-2	CONTAINMENT HYDROGEN SKIMMER VENTILATION FAN #2	Y	C-194
1-HV-DGX-1	AB EMERGENCY DIESEL GENERATOR ROOM VENTILATION	Y	C-199
1-HV-SGRS-8	4KV ROOM 600V SWITCHGEAR TRANSFORMERS TR11A AND	Y	C-203
1-IFI-53	BORON INJECTION TO REACTOR COOLANT LOOP #3 FLOW	N	C-207
1-IMO-222	WEST CONTAINMENT SPRAY PUMP DISCHARGE TO	N	C-210
1-IMO-225	REFUELING WATER STORAGE TANK TO WEST CONTAINMENT	N	C-213

Table C-1 Summary of Seismic Walkdown Checklists for DCCNP1 Online Walkdowns			
COMPONENT ID	DESCRIPTION	Anchorage Verification Confirmed	PAGE
1-IMO-320	WEST RESIDUAL HEAT REMOVAL PUMP PP-35W SUCTION	N	C-216
1-IMO-331	WEST RHR TO UPPER CONTAINMENT SPRAY SHUTOFF VALVE	N	C-219
1-IMO-350	WEST RHR HEAT EXCHANGER OUTLET TO SAFETY INJECTION	N	C-223
1-IMO-52	BORON INJECTION TO REACTOR COOLANT LOOP #2 SHUTOFF	N	C-227
1-IMO-911	REFUELING WATER STORAGE TANK TO CVCS CHARGING	N	C-232
1-MCAB <sup>(1)</sup>	250VDC DISTRIBUTION PANEL MCAB	Y	C-236
1-MCM-221	MAIN STEAM LEAD #2 TO AUXILIARY FEED PUMP TURBINE	N	C-240
1-MRV-230	STEAM GENERATOR OME-3-3 STOP VALVE	N	C-243
1-MRV-243	STEAM GENERATOR OME-3-4 POWER OPERATED RELIEF	N	C-247
1-NLP-153	PRESSURIZER OME-4 PROTECTION CHANNEL 3 LEVEL	Y	C-250
1-NPS-111	REACTOR VESSEL TRAIN 'B' WIDE RANGE PRESSURE	Y	C-253
1-OME-150-AB	AB EMERGENCY DIESEL GENERATOR	Y	C-258
1-PP-10W	WEST COMPONENT COOLING WATER PUMP	N	C-264
1-PP-26S	SOUTH SAFETY INJECTION PUMP	N	C-267
1-PP-35W	WEST RESIDUAL HEAT REMOVAL PUMP	N	C-272
1-PP-3W	WEST MOTOR DRIVEN AUXILIARY FEEDWATER PUMP	Y	C-276
1-PP-4	TURBINE DRIVEN AUXILIARY FEED PUMP	N	C-281
1-PP-50W	WEST CENTRIFUGAL CHARGING PUMP	Y	C-286
1-PP-7W	WEST ESSENTIAL SERVICE WATER PUMP	Y	C-290
1-PP-9W	WEST CONTAINMENT SPRAY PUMP	Y	C-297
1-PS-A	600VAC MOTOR CONTROL CENTER PS-A	N	C-301
1-QT-106-AB1	AB EMERGENCY DIESEL FUEL OIL TRANSFER PUMP #1	Y	C-307
1-QT-107-AB	AB EMERGENCY DIESEL FUEL OIL DAY TANK	Y	C-312
1-QT-130-AB2	AB EMERGENCY DIESEL JACKET WATER PUMP #2	Y	C-317
1-QT-141-AB1	AB EMERGENCY DIESEL STARTING AIR RECEIVER #1	N	C-320
1-QT-142-AB1	AB EMERGENCY DIESEL STARTING AIR COMPRESSOR #1	Y	C-325
1-QT-506	TURBINE DRIVEN AUX FEED PUMP PP-4 TRIP AND THROTTLE VALVE	N	C-330



Table C-1 Summary of Seismic Walkdown Checklists for DCCNP1 Online Walkdowns			
COMPONENT ID	DESCRIPTION	Anchorage Verification Confirmed	PAGE
1-RC	REACTOR CONTROL RODS CONTROL PANEL	N	C-333
1-RPS-B	REACTOR PROTECTION AND SAFEGUARD ACTUATION	Y	C-336
1-RPST-B	REACTOR PROTECTION AND SAFEGUARD ACTUATION	N	C-341
1-RPSX-B	REACTOR PROTECTION AND SAFEGUARD ACTUATION	N	C-346
1-SG	STEAM GENERATOR AND AUXILIARY FEED PUMP CONTROL	Y	C-350
1-SIS	SAFETY INJECTION CONTROL PANEL	Y	C-354
1-SPY	CONTAINMENT SPRAY CONTROL PANEL	N	C-360
1-TDAB <sup>(1)</sup>	250VDC TRAIN 'B' TRANSFER CABINET	N	C-364
1-TR11A	600VAC BUS 11A SUPPLY TRANSFORMER	N	C-368
1-TR-AFWX	120/208VAC AUXILIARY FEEDWATER DISTRIBUTION PANEL	Y	C-372
1-WMO-702	WEST ESSENTIAL SERVICE WTR PUMP PP-7W DISCH S/O VA	N	C-378
1-WMO-715	WEST CONTAINMENT SPRAY HEAT EXCHANGER 1-HE-18W	N	C-381
1-WMO-717	WEST CONTAINMENT SPRAY HEAT EXCHANGER ESSENTIAL	N	C-384
1-WMO-744	ESSENTIAL SERVICE WATER TO WEST MOTOR DRIVEN	N	C-387
1-WMO-753	ESSENTIAL SERVICE WATER TO TURBINE DRIVEN	N	C-390
1-WPA-702	WEST ESW PUMP PP-7W DISCH LOW PRES ALARM XMTR	N	C-393
1-XPC-211	AB EMER DIESEL STARTING AIR RECEIVER QT-141-AB1 PRESSURE XMTR	N	C-397



Notes: 1) Partial walkdowns performed on these Components because they could not be opened. These components were walked down again during the outage walkdowns and new checklists were developed and completed under Table C-3.



Status:  Y  N  U

**Seismic Walkdown Checklist (SWC)**

Equipment ID No.: 12-CRV-51

Equipment Class: (7) Fluid-Operated Valves

Equipment Description: UNIT 1 & UNIT 2 CONDENSATE STORAGE TANKS CROSSTIE

Project: DC Cook 1 SWEL

Location (Bldg, Elev,

Room/Area): TB1, 591.00 ft, 83

Manufacturer/Model: \_\_\_\_\_

**Instructions for Completing Checklist**

This checklist may be used to document the results of the Seismic Walkdown of an item of equipment on the SWEL. The space below each of the following questions may be used to record the results of judgments and findings. Additional space is provided at the end of this checklist for documenting other comments.

**Anchorage**

- |   |                |
|---|----------------|
| 1. Is anchorage configuration verification required (i.e., is the item one of the 50% of SWEL items requiring such verification)?   | No             |
| 2. Is the anchorage free of bent, broken, missing or loose hardware?  | Not Applicable |
| 3. Is the anchorage free of corrosion that is more than mild surface oxidation?   | Not Applicable |
| 4. Is the anchorage free of visible cracks in the concrete near the anchors?  | Not Applicable |
| 5. Is the anchorage configuration consistent with plant documentation?<br>(Note: This question only applies if the item is one of the 50% for which an anchorage configuration verification is required.) | Not Applicable |
| 6. Based on the above anchorage evaluations, is the anchorage free of potentially adverse seismic conditions?   | Yes            |

Status:  Y  N  U


**Seismic Walkdown Checklist (SWC)**

Equipment ID No.: 12-CRV-51

Equipment Class: (7) Fluid-Operated Valves

Equipment Description: UNIT 1 & UNIT 2 CONDENSATE STORAGE TANKS CROSSTIE

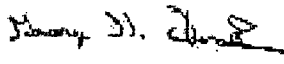
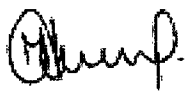
**Interaction Effects**

- |   |     |   |
|---|-----|---|
| 7. Are soft targets free from impact by nearby equipment or structures?<br><i>Fire extinguishers on short hooks cannot impact valve and therefore this was acceptable for this component. - AR 2012-11669 was issued.</i> | Yes |  |
| 8. Are overhead equipment, distribution systems, ceiling tiles and lighting, and masonry block walls not likely to collapse onto the equipment?   | Yes |   |
| 9. Do attached lines have adequate flexibility to avoid damage?   | Yes |   |
| 10. Based on the above seismic interaction evaluations, is equipment free of potentially adverse seismic interaction effects?   | Yes |   |

**Other Adverse Conditions**

- |  |     |
|--|-----|
| 11. Have you looked for and found no adverse seismic conditions that could adversely affect the safety functions of the equipment? | Yes |
|--|-----|

**Comments**

Evaluated by:  George G Thomas Date: 08/15/2013  
 Neda Stoeva 08/15/2013

**Photos**

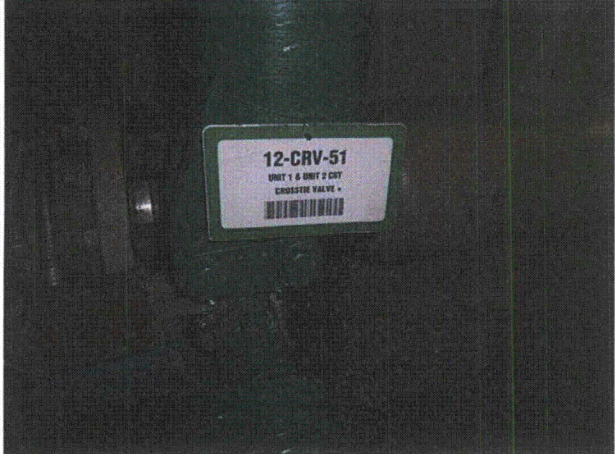
Status:  Y  N  U

**Seismic Walkdown Checklist (SWC)**

Equipment ID No.: 12-CRV-51

Equipment Class: (7) Fluid-Operated Valves

Equipment Description: UNIT 1 & UNIT 2 CONDENSATE STORAGE TANKS CROSSTIE

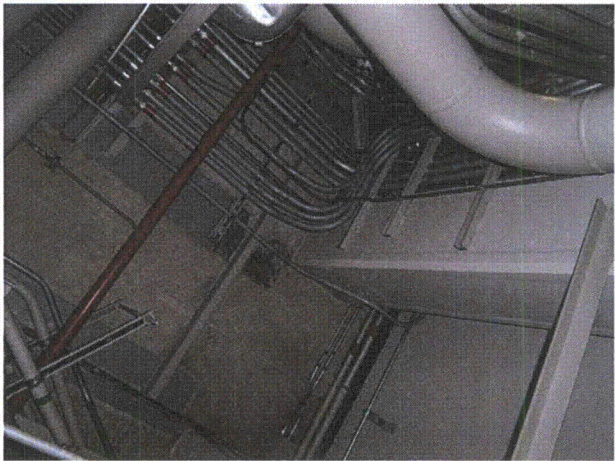


P9170902



P9170903

1



P9170904

Status:  Y  N  U

**Seismic Walkdown Checklist (SWC)**

Equipment ID No.: 12-HE-16N

Equipment Class: (21) Tanks and Heat Exchangers

Equipment Description: Spent Fuel Pit Heat Exchanger

Project: DC Cook 1 SWEL

Location (Bldg, Elev,

Room/Area): AB2, 609.00 ft, 96

Manufacturer/Model:

**Instructions for Completing Checklist**

This checklist may be used to document the results of the Seismic Walkdown of an item of equipment on the SWEL. The space below each of the following questions may be used to record the results of judgments and findings. Additional space is provided at the end of this checklist for documenting other comments.

**Anchorage**

1. Is anchorage configuration verification required (i.e., is the item one of the 50% of SWEL items requiring such verification)? Yes  
*SQUG 12-HE-16N REV0*
  
2. Is the anchorage free of bent, broken, missing or loose hardware? Yes
  
3. Is the anchorage free of corrosion that is more than mild surface oxidation? Yes  
*PAINTED*
  
4. Is the anchorage free of visible cracks in the concrete near the anchors? Yes
  
5. Is the anchorage configuration consistent with plant documentation? Yes  
(Note: This question only applies if the item is one of the 50% for which an anchorage configuration verification is required.)
  
6. Based on the above anchorage evaluations, is the anchorage free of potentially adverse seismic conditions? Yes



Status:  Y  N  U

**Seismic Walkdown Checklist (SWC)**

Equipment ID No.: 12-HE-16N

Equipment Class: (21) Tanks and Heat Exchangers

Equipment Description: Spent Fuel Pit Heat Exchanger

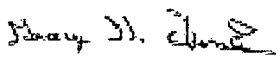
**Interaction Effects**

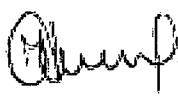
7. Are soft targets free from impact by nearby equipment or structures? Yes  
*12-SF-119N chain can swing into 12-HE-16N but is not damaging*
8. Are overhead equipment, distribution systems, ceiling tiles and lighting, and masonry block walls not likely to collapse onto the equipment? Yes
9. Do attached lines have adequate flexibility to avoid damage? Yes
10. Based on the above seismic interaction evaluations, is equipment free of potentially adverse seismic interaction effects? Yes

**Other Adverse Conditions**

11. Have you looked for and found no adverse seismic conditions that could adversely affect the safety functions of the equipment? Yes

**Comments**

Evaluated by:  George G Thomas Date: 10/18/12

 Neda Stoeva 10/18/12

**Photos**

Status:  Y  N  U

**Seismic Walkdown Checklist (SWC)**

Equipment ID No.: 12-HV-ACCP-3

Equipment Class: (9) Fans

Equipment Description: COMPONENT COOLING WATER PUMPS VENTILATION SOUTH

Project: DC Cook 1 SWEL

Location (Bldg, Elev,  
Room/Area): AB2, 633.00 ft, 633

Manufacturer/Model: \_\_\_\_\_

**Instructions for Completing Checklist**

This checklist may be used to document the results of the Seismic Walkdown of an item of equipment on the SWEL. The space below each of the following questions may be used to record the results of judgments and findings. Additional space is provided at the end of this checklist for documenting other comments.

**Anchorage**

- |   |                |
|---|----------------|
| 1. Is anchorage configuration verification required (i.e., is the item one of the 50% of SWEL items requiring such verification)?   | No             |
| 2. Is the anchorage free of bent, broken, missing or loose hardware?<br><i>Insulated component attached inline with HVAC vents</i>  | Not Applicable |
| 3. Is the anchorage free of corrosion that is more than mild surface oxidation?   | Not Applicable |
| 4. Is the anchorage free of visible cracks in the concrete near the anchors?  | Not Applicable |
| 5. Is the anchorage configuration consistent with plant documentation?<br>(Note: This question only applies if the item is one of the 50% for which an anchorage configuration verification is required.) | Not Applicable |
| 6. Based on the above anchorage evaluations, is the anchorage free of potentially adverse seismic conditions?   | Yes            |

Status:  Y  N  U

**Seismic Walkdown Checklist (SWC)**

Equipment ID No.: 12-HV-ACCP-3

Equipment Class: (9) Fans

Equipment Description: COMPONENT COOLING WATER PUMPS VENTILATION SOUTH

**Interaction Effects**

7. Are soft targets free from impact by nearby equipment or structures? Yes

8. Are overhead equipment, distribution systems, ceiling tiles and lighting, and masonry block walls not likely to collapse onto the equipment? Not Applicable  
*Nothing above fan - inline with vent and at ceiling level*

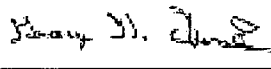
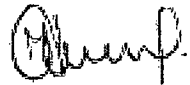
9. Do attached lines have adequate flexibility to avoid damage? Yes

10. Based on the above seismic interaction evaluations, is equipment free of potentially adverse seismic interaction effects? Yes

**Other Adverse Conditions**

11. Have you looked for and found no adverse seismic conditions that could adversely affect the safety functions of the equipment? Yes

**Comments**

Evaluated by:  George G Thomas Date: 10/18/12  
 Neda Stoeva 10/18/12

**Photos**

Status:  Y  N  U

**Seismic Walkdown Checklist (SWC)**

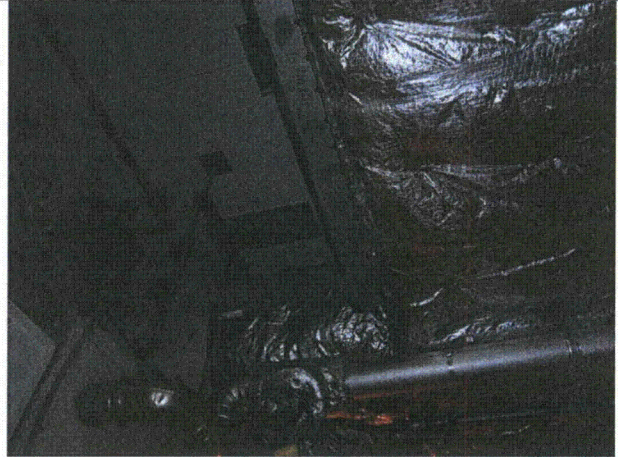
Equipment ID No.: 12-HV-ACCP-3

Equipment Class: (9) Fans

Equipment Description: COMPONENT COOLING WATER PUMPS VENTILATION SOUTH



P9100178



P9100179

Status:  Y  N  U

**Seismic Walkdown Checklist (SWC)**

Equipment ID No.: 12-HV-ESW-5

Equipment Class: (9) Fans

Equipment Description: UNIT 1 WEST ESW PP ROOM SUPPLY VENTILATION FAN

Project: DC Cook 1 SWEL

Location (Bldg, Elev,

Room/Area): SH1, 591.00 ft, 136

Manufacturer/Model: \_\_\_\_\_

**Instructions for Completing Checklist**

This checklist may be used to document the results of the Seismic Walkdown of an item of equipment on the SWEL. The space below each of the following questions may be used to record the results of judgments and findings. Additional space is provided at the end of this checklist for documenting other comments.

**Anchorage**

1. Is anchorage configuration verification required (i.e., is the item one of the 50% of SWEL items requiring such verification)? Yes  
*DWG 12-5682 REV10*
  
2. Is the anchorage free of bent, broken, missing or loose hardware? Yes
  
3. Is the anchorage free of corrosion that is more than mild surface oxidation? Yes
  
4. Is the anchorage free of visible cracks in the concrete near the anchors? Yes
  
5. Is the anchorage configuration consistent with plant documentation? Yes  
(Note: This question only applies if the item is one of the 50% for which an anchorage configuration verification is required.)
  
6. Based on the above anchorage evaluations, is the anchorage free of potentially adverse seismic conditions? Yes

Status:  Y  N  U

**Seismic Walkdown Checklist (SWC)**

Equipment ID No.: 12-HV-ESW-5

Equipment Class: (9) Fans

Equipment Description: UNIT 1 WEST ESW PP ROOM SUPPLY VENTILATION FAN

**Interaction Effects**

7. Are soft targets free from impact by nearby equipment or structures? Yes
8. Are overhead equipment, distribution systems, ceiling tiles and lighting, and masonry block walls not likely to collapse onto the equipment? Yes
9. Do attached lines have adequate flexibility to avoid damage? Yes
10. Based on the above seismic interaction evaluations, is equipment free of potentially adverse seismic interaction effects? Yes

**Other Adverse Conditions**

11. Have you looked for and found no adverse seismic conditions that could adversely affect the safety functions of the equipment? Yes

**Comments**

Evaluated by: George G. Thomas George G Thomas Date: 10/18/12

Neda Stoeva Neda Stoeva 10/18/12

**Photos**

Status:  Y  N  U

**Seismic Walkdown Checklist (SWC)**

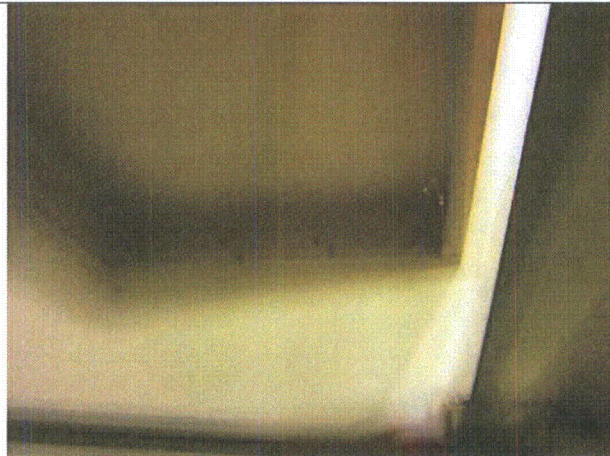
Equipment ID No.: 12-HV-ESW-5

Equipment Class: (9) Fans

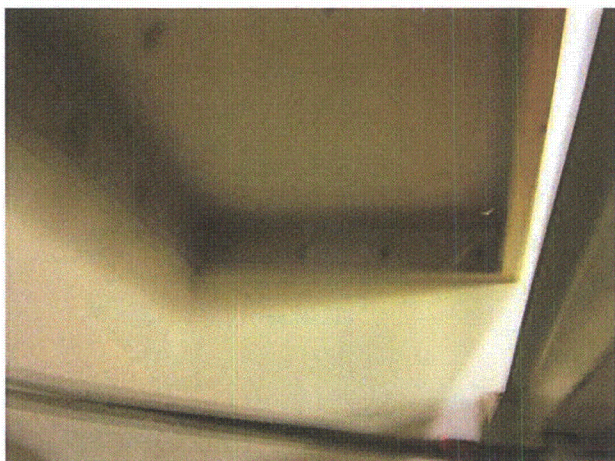
Equipment Description: UNIT 1 WEST ESW PP ROOM SUPPLY VENTILATION FAN



P9090026



P9090027



P9090028



P9090029

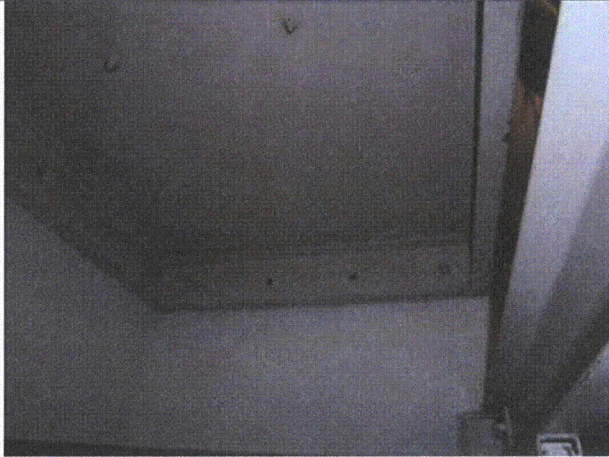
Status:  Y  N  U

**Seismic Walkdown Checklist (SWC)**

Equipment ID No.: 12-HV-ESW-5

Equipment Class: (9) Fans

Equipment Description: UNIT 1 WEST ESW PP ROOM SUPPLY VENTILATION FAN



P9090030



P9090031



P9090032



P9090033



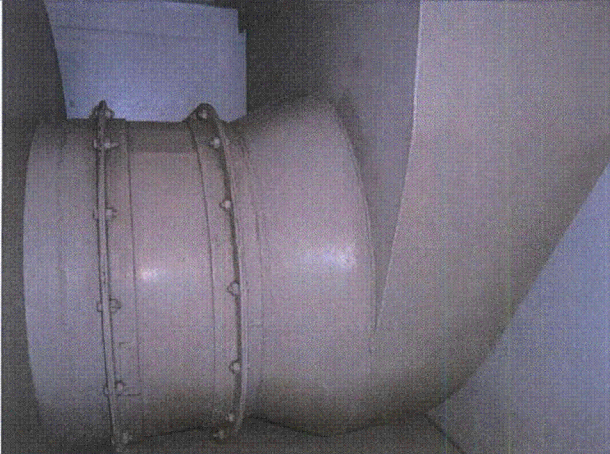
Status:  Y  N  U

**Seismic Walkdown Checklist (SWC)**

Equipment ID No.: 12-HV-ESW-5

Equipment Class: (9) Fans

Equipment Description: UNIT 1 WEST ESW PP ROOM SUPPLY VENTILATION FAN



P9090034



P9090035



P9090036



P9090037

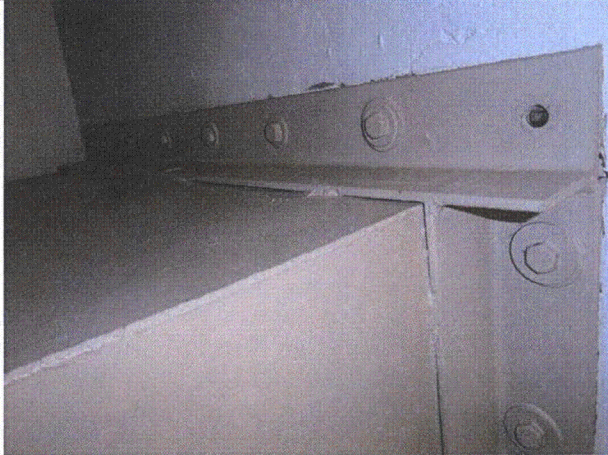
Status:  Y  N  U

**Seismic Walkdown Checklist (SWC)**

Equipment ID No.: 12-HV-ESW-5

Equipment Class: (9) Fans

Equipment Description: UNIT 1 WEST ESW PP ROOM SUPPLY VENTILATION FAN



P9090038



P9090039

Status: Y  N  U

**Seismic Walkdown Checklist (SWC)**

Equipment ID No.: 1-ABD-A

Equipment Class: (1) Motor Control Centers

Equipment Description: 600VAC MOTOR CONTROL CENTER ABD-A

Project: DC Cook 1 SWEL

Location (Bldg, Elev,

Room/Area): AB1, 587.00 ft, 121

Manufacturer/Model: \_\_\_\_\_

**Instructions for Completing Checklist**

This checklist may be used to document the results of the Seismic Walkdown of an item of equipment on the SWEL. The space below each of the following questions may be used to record the results of judgments and findings. Additional space is provided at the end of this checklist for documenting other comments.

**Anchorage**

- |   |     |
|---|-----|
| 1. Is anchorage configuration verification required (i.e., is the item one of the 50% of SWEL items requiring such verification)?<br><i>SQUG 1-ABD-A REV0</i>   | Yes |
| 2. Is the anchorage free of bent, broken, missing or loose hardware?  | Yes |
| 3. Is the anchorage free of corrosion that is more than mild surface oxidation?   | Yes |
| 4. Is the anchorage free of visible cracks in the concrete near the anchors?<br><i>Concrete only in front of MCC</i>  | Yes |
| 5. Is the anchorage configuration consistent with plant documentation?<br>(Note: This question only applies if the item is one of the 50% for which an anchorage configuration verification is required.) | Yes |
| 6. Based on the above anchorage evaluations, is the anchorage free of potentially adverse seismic conditions?   | Yes |

Status: Y  N  U

**Seismic Walkdown Checklist (SWC)**

Equipment ID No.: 1-ABD-A

Equipment Class: (1) Motor Control Centers

Equipment Description: 600VAC MOTOR CONTROL CENTER ABD-A

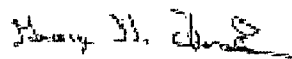
**Interaction Effects**


7. Are soft targets free from impact by nearby equipment or structures? No  
*Fire extinguishers on short hooks - AR 2012-11669 was issued.*
8. Are overhead equipment, distribution systems, ceiling tiles and lighting, and masonry block walls not likely to collapse onto the equipment? Yes  
*CO2 fire protection*
9. Do attached lines have adequate flexibility to avoid damage? Yes
10. Based on the above seismic interaction evaluations, is equipment free of potentially adverse seismic interaction effects? No

**Other Adverse Conditions**

11. Have you looked for and found no adverse seismic conditions that could adversely affect the safety functions of the equipment? Yes

**Comments**

Evaluated by:  George G Thomas Date: 10/18/12

 Neda Stoeva 10/18/12

**Photos**

Status: Y  N  U

**Seismic Walkdown Checklist (SWC)**

Equipment ID No.: 1-ABD-A

Equipment Class: (1) Motor Control Centers

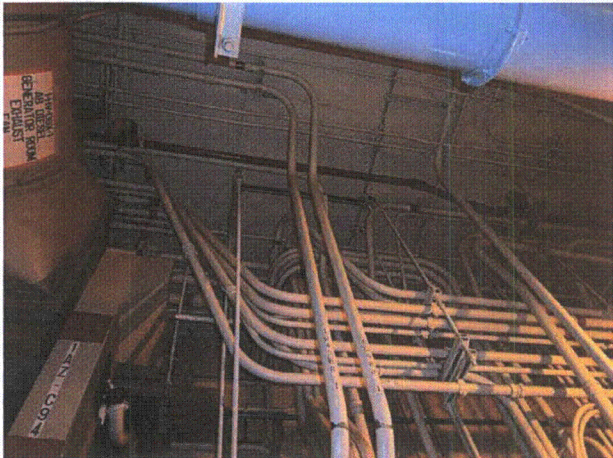
Equipment Description: 600VAC MOTOR CONTROL CENTER ABD-A



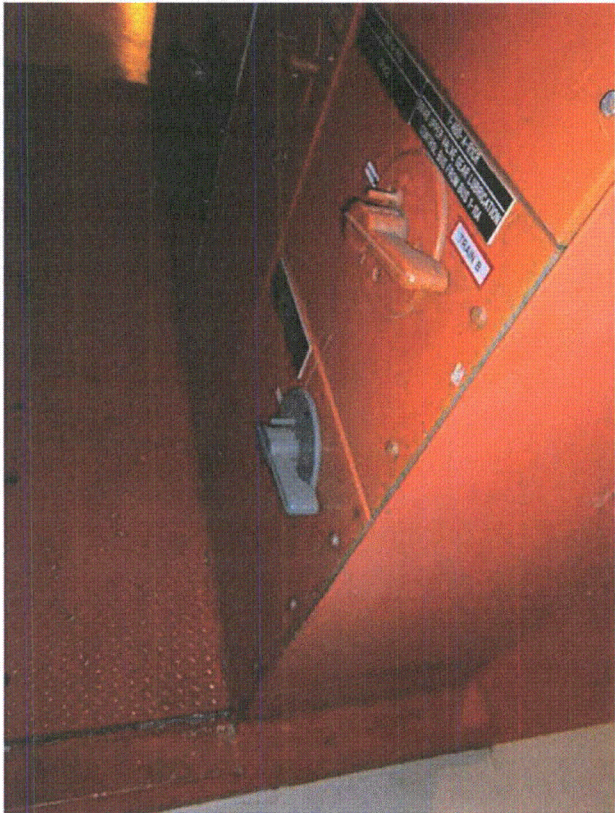
P9130194



P9130195



P9130196



P9130197

Status: Y  N  U

**Seismic Walkdown Checklist (SWC)**

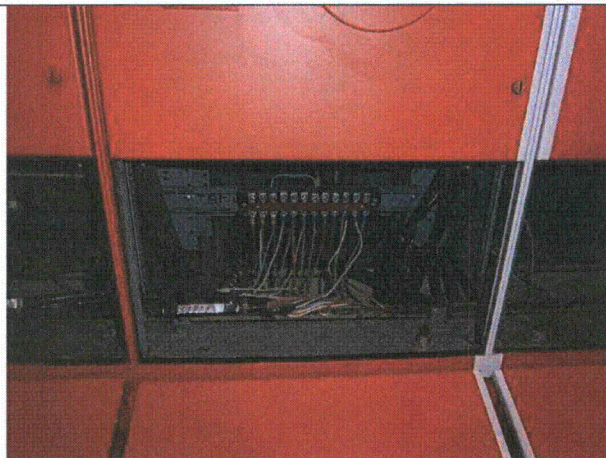
Equipment ID No.: 1-ABD-A

Equipment Class: (1) Motor Control Centers

Equipment Description: 600VAC MOTOR CONTROL CENTER ABD-A



P9130198



P9130199



P9130200



P9130201

Status: Y  N  U

**Seismic Walkdown Checklist (SWC)**

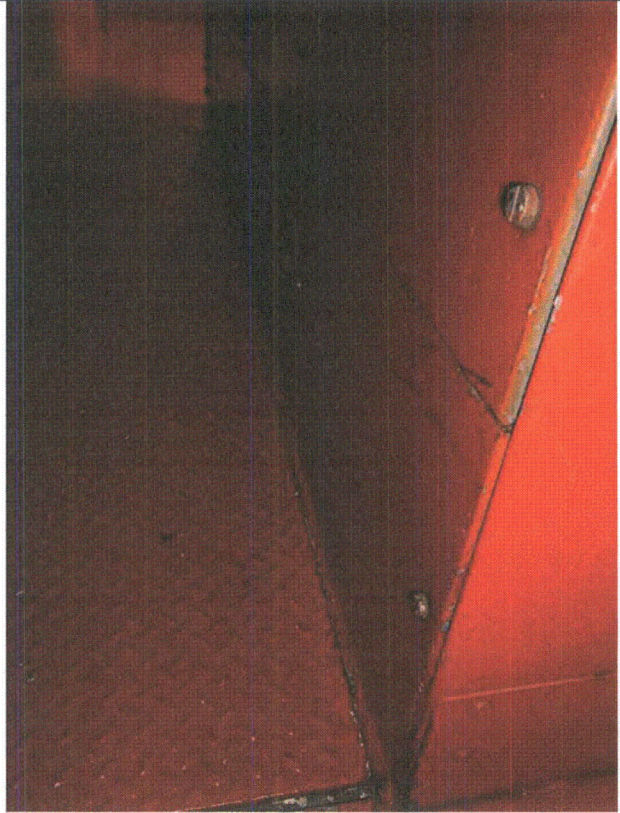
Equipment ID No.: 1-ABD-A

Equipment Class: (1) Motor Control Centers

Equipment Description: 600VAC MOTOR CONTROL CENTER ABD-A



P9130202



P9130203

Status: Y  N  U

**Seismic Walkdown Checklist (SWC)**

Equipment ID No.: 1-ABD-A

Equipment Class: (1) Motor Control Centers

Equipment Description: 600VAC MOTOR CONTROL CENTER ABD-A



P9130204



P9130205



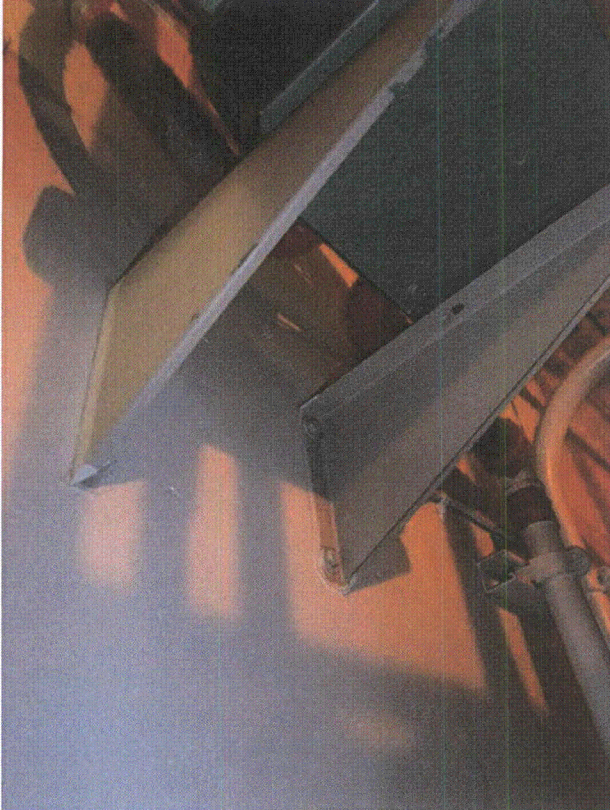
Status: Y  N  U

**Seismic Walkdown Checklist (SWC)**

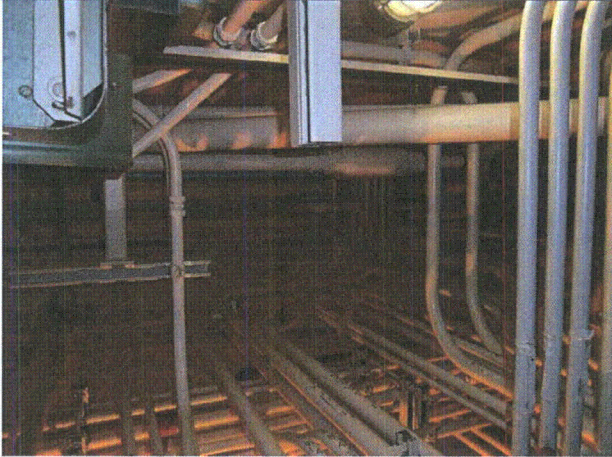
Equipment ID No.: 1-ABD-A

Equipment Class: (1) Motor Control Centers

Equipment Description: 600VAC MOTOR CONTROL CENTER ABD-A



P9130206



P9130207

Status: Y  N  U

**Seismic Walkdown Checklist (SWC)**

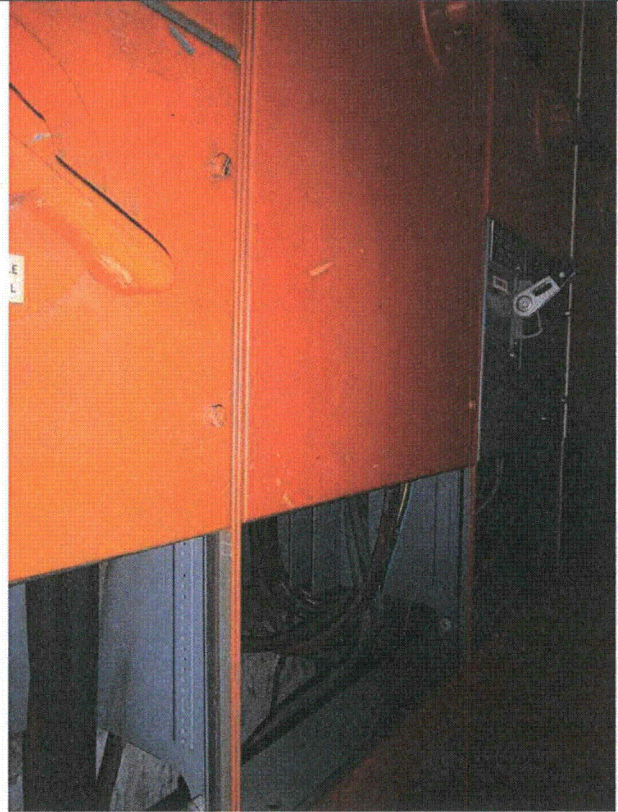
Equipment ID No.: 1-ABD-A

Equipment Class: (1) Motor Control Centers

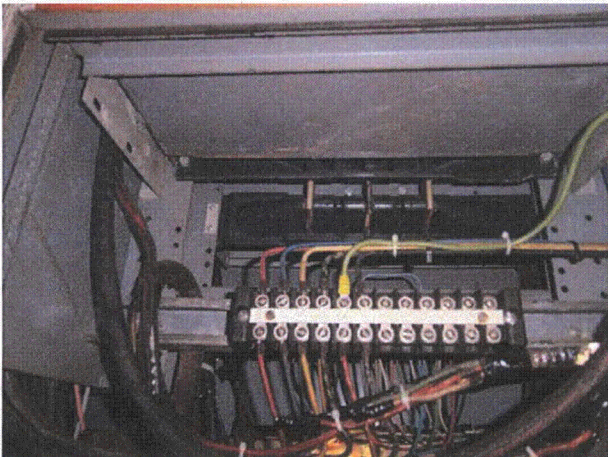
Equipment Description: 600VAC MOTOR CONTROL CENTER ABD-A



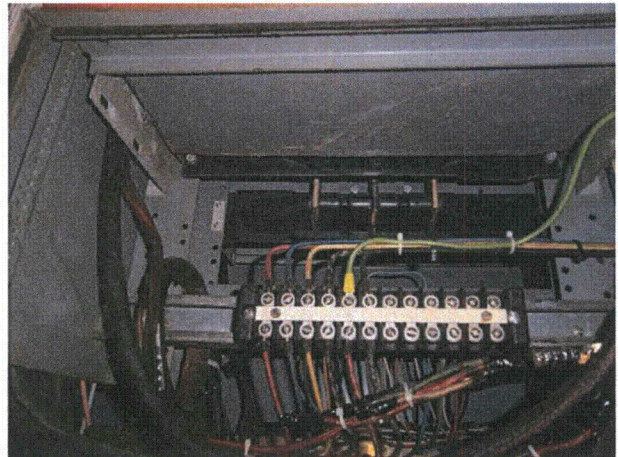
P9130208



P9130209



P9130210



P9130211

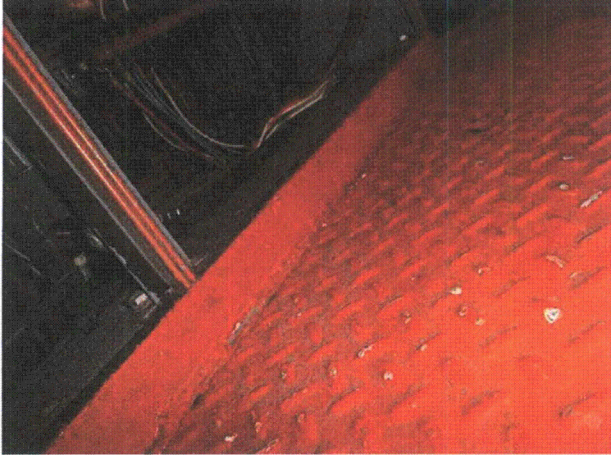
Status: Y  N  U

**Seismic Walkdown Checklist (SWC)**

Equipment ID No.: 1-ABD-A

Equipment Class: (1) Motor Control Centers

Equipment Description: 600VAC MOTOR CONTROL CENTER ABD-A



P9130212

Status: Y  N  U

**Seismic Walkdown Checklist (SWC)**

Equipment ID No.: 1-ABD-B

Equipment Class: (1) Motor Control Centers

Equipment Description: 600VAC MOTOR CONTROL CENTER ABD-B

Project: DC Cook 1 SWEL

Location (Bldg, Elev,

Room/Area): AB1, 587.00 ft, 121

Manufacturer/Model:

**Instructions for Completing Checklist**

This checklist may be used to document the results of the Seismic Walkdown of an item of equipment on the SWEL. The space below each of the following questions may be used to record the results of judgments and findings. Additional space is provided at the end of this checklist for documenting other comments.

**Anchorage**

1. Is anchorage configuration verification required (i.e., is the item one of the 50% of SWEL items requiring such verification)? Yes  
*SQUG 1-ABD-A REV0*
  
2. Is the anchorage free of bent, broken, missing or loose hardware? Yes
  
3. Is the anchorage free of corrosion that is more than mild surface oxidation? Yes
  
4. Is the anchorage free of visible cracks in the concrete near the anchors? Yes  
*Concrete only in front of MCC*
  
5. Is the anchorage configuration consistent with plant documentation? Yes  
(Note: This question only applies if the item is one of the 50% for which an anchorage configuration verification is required.)
  
6. Based on the above anchorage evaluations, is the anchorage free of potentially adverse seismic conditions? Yes

Status: Y  N  U

**Seismic Walkdown Checklist (SWC)**

Equipment ID No.: 1-ABD-B

Equipment Class: (1) Motor Control Centers

Equipment Description: 600VAC MOTOR CONTROL CENTER ABD-B

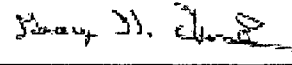
**Interaction Effects**


7. Are soft targets free from impact by nearby equipment or structures? No  
*Fire extinguishers on short hooks - AR 2012-11669 was issued.*
8. Are overhead equipment, distribution systems, ceiling tiles and lighting, and masonry block walls not likely to collapse onto the equipment? Yes  
*CO2 fire protection*
9. Do attached lines have adequate flexibility to avoid damage? Yes
10. Based on the above seismic interaction evaluations, is equipment free of potentially adverse seismic interaction effects? No

**Other Adverse Conditions**

11. Have you looked for and found no adverse seismic conditions that could adversely affect the safety functions of the equipment? Yes

**Comments**

Evaluated by:  George G Thomas Date: 10/18/12

 Neda Stoeva 10/18/12

**Photos**

Status: Y  N  U

**Seismic Walkdown Checklist (SWC)**

Equipment ID No.: 1-ABD-B

Equipment Class: (1) Motor Control Centers

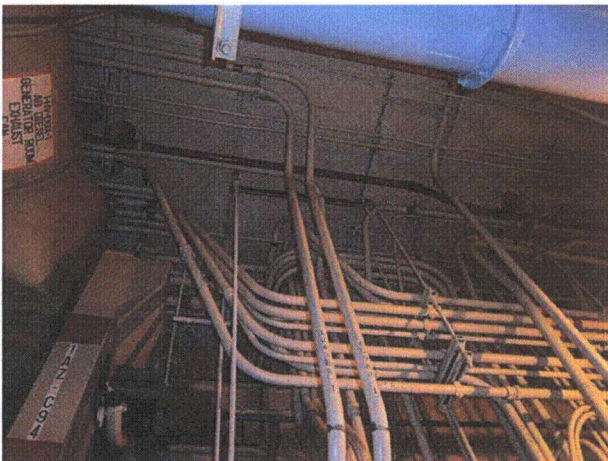
Equipment Description: 600VAC MOTOR CONTROL CENTER ABD-B



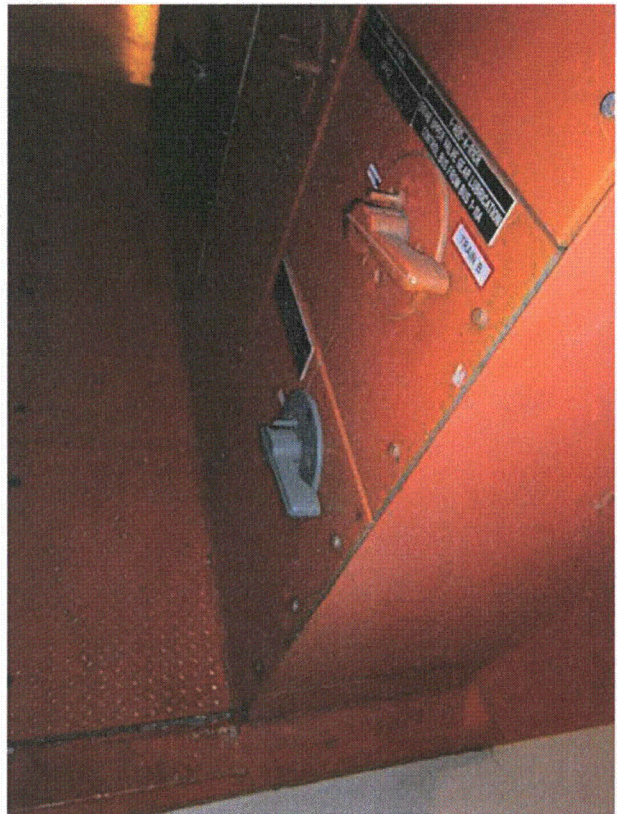
P9130194



P9130195



P9130196



P9130197

Status: Y  N  U

**Seismic Walkdown Checklist (SWC)**

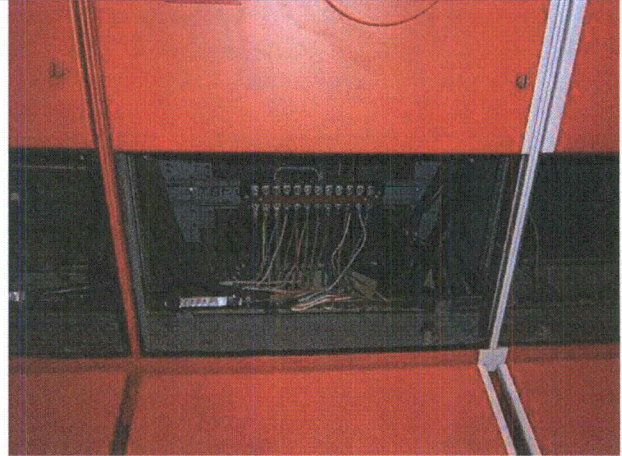
Equipment ID No.: 1-ABD-B

Equipment Class: (1) Motor Control Centers

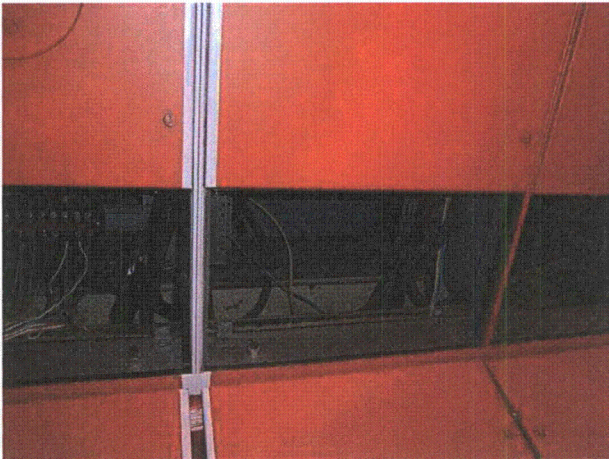
Equipment Description: 600VAC MOTOR CONTROL CENTER ABD-B



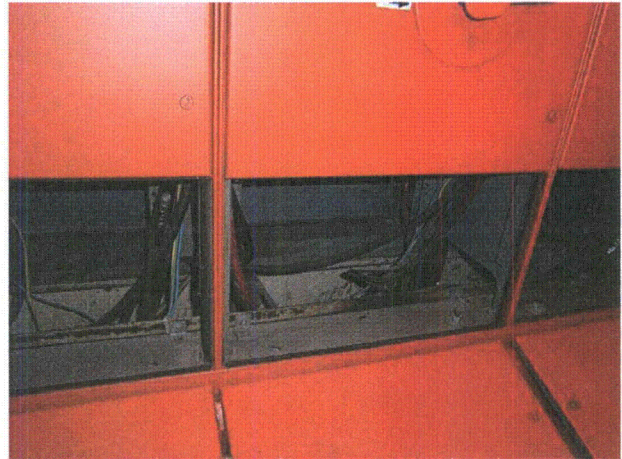
P9130198



P9130199



P9130200



P9130201

Status: Y  N  U

**Seismic Walkdown Checklist (SWC)**

Equipment ID No.: 1-ABD-B

Equipment Class: (1) Motor Control Centers

Equipment Description: 600VAC MOTOR CONTROL CENTER ABD-B



P9130202



P9130203



Status: Y  N  U

**Seismic Walkdown Checklist (SWC)**

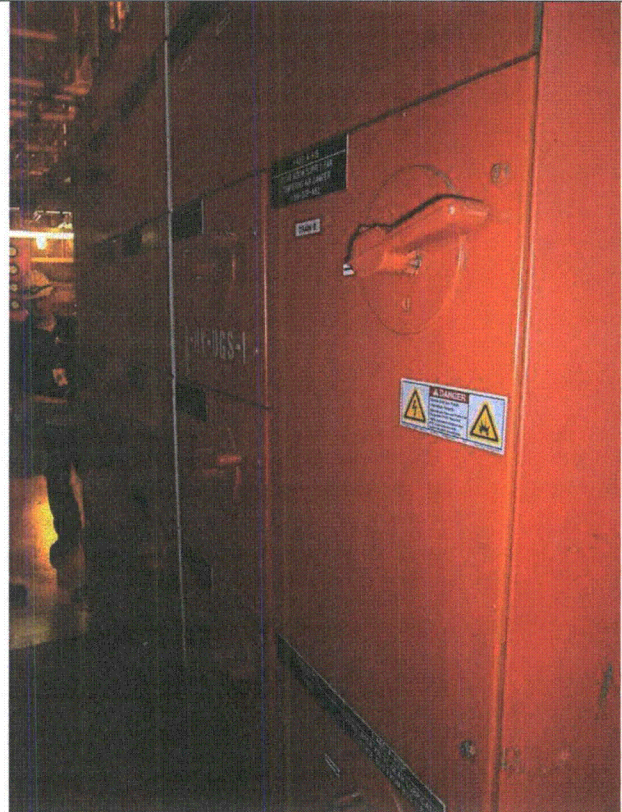
Equipment ID No.: 1-ABD-B

Equipment Class: (1) Motor Control Centers

Equipment Description: 600VAC MOTOR CONTROL CENTER ABD-B



P9130204



P9130205

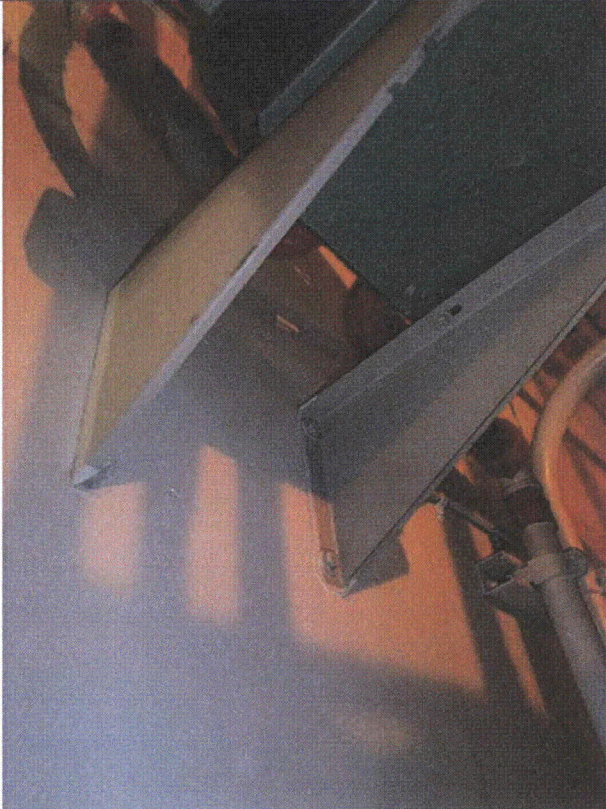
Status: Y  N  U

**Seismic Walkdown Checklist (SWC)**

Equipment ID No.: 1-ABD-B

Equipment Class: (1) Motor Control Centers

Equipment Description: 600VAC MOTOR CONTROL CENTER ABD-B



P9130206



P9130207

Status: Y  N  U

**Seismic Walkdown Checklist (SWC)**

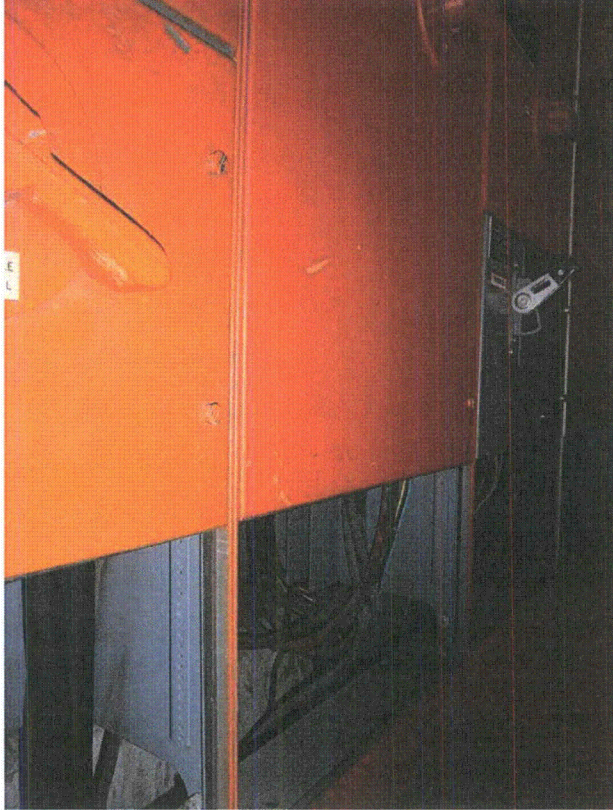
Equipment ID No.: 1-ABD-B

Equipment Class: (1) Motor Control Centers

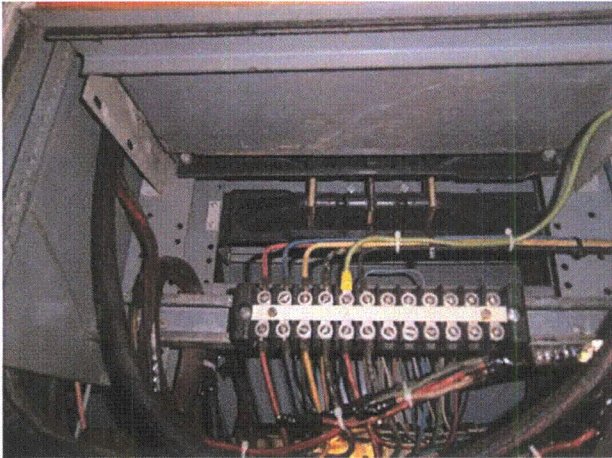
Equipment Description: 600VAC MOTOR CONTROL CENTER ABD-B



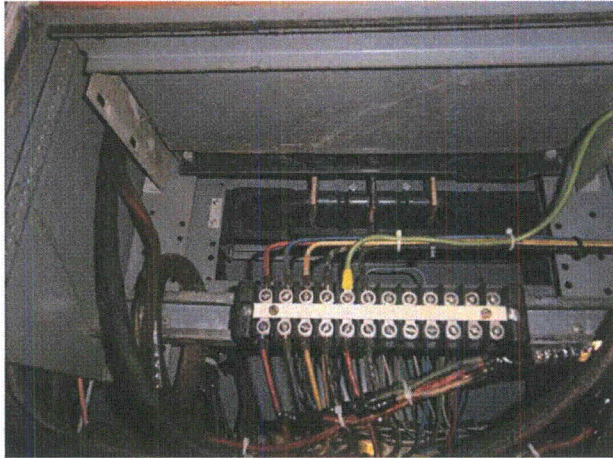
P9130208



P9130209



P9130210



P9130211

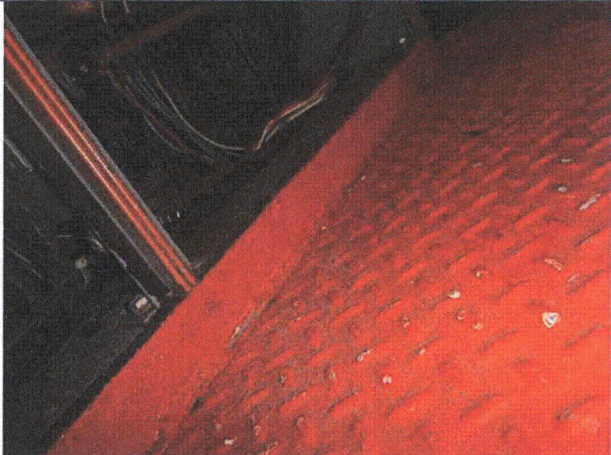
Status: Y  N  U

**Seismic Walkdown Checklist (SWC)**

Equipment ID No.: 1-ABD-B

Equipment Class: (1) Motor Control Centers

Equipment Description: 600VAC MOTOR CONTROL CENTER ABD-B



P9130212

Status:  Y  N  U

**Seismic Walkdown Checklist (SWC)**

Equipment ID No.: 1-ACRA-2

Equipment Class: (20) Instrumentation and Control Panels and Cabinets

Equipment Description: CONTROL ROOM AIR HANDLING SUBPANEL #2

Project: DC Cook 1 SWEL

Location (Bldg, Elev,

Room/Area): AB1, 650.00 ft, 129

Manufacturer/Model: \_\_\_\_\_

**Instructions for Completing Checklist**

This checklist may be used to document the results of the Seismic Walkdown of an item of equipment on the SWEL. The space below each of the following questions may be used to record the results of judgments and findings. Additional space is provided at the end of this checklist for documenting other comments.

**Anchorage**

1. Is anchorage configuration verification required (i.e., is the item one of the 50% of SWEL items requiring such verification)? Yes  
*DWG 12-3366 REV5*
  
2. Is the anchorage free of bent, broken, missing or loose hardware? Yes
  
3. Is the anchorage free of corrosion that is more than mild surface oxidation? Yes
  
4. Is the anchorage free of visible cracks in the concrete near the anchors? Yes
  
5. Is the anchorage configuration consistent with plant documentation? Yes  
(Note: This question only applies if the item is one of the 50% for which an anchorage configuration verification is required.)
  
6. Based on the above anchorage evaluations, is the anchorage free of potentially adverse seismic conditions? Yes  
*Welds at all 4 corners. 1 bolt has lack of thread engagement - evaluated in SQUG - OK*

Status:  Y  N  U

**Seismic Walkdown Checklist (SWC)**

Equipment ID No.: 1-ACRA-2

Equipment Class: (20) Instrumentation and Control Panels and Cabinets

Equipment Description: CONTROL ROOM AIR HANDLING SUBPANEL #2

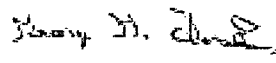
**Interaction Effects**


7. Are soft targets free from impact by nearby equipment or structures? Yes
8. Are overhead equipment, distribution systems, ceiling tiles and lighting, and masonry block walls not likely to collapse onto the equipment? Yes  
*Block Wall - retrofitted (adjacent to panel) - OK per DWG 12-4031, Wall W-1*
9. Do attached lines have adequate flexibility to avoid damage? Yes
10. Based on the above seismic interaction evaluations, is equipment free of potentially adverse seismic interaction effects? Yes

**Other Adverse Conditions**

11. Have you looked for and found no adverse seismic conditions that could adversely affect the safety functions of the equipment? Yes

**Comments**

Evaluated by:  George G Thomas Date: 10/18/12

 Neda Stoeva 10/18/12

**Photos**

Status:  Y  N  U

**Seismic Walkdown Checklist (SWC)**

Equipment ID No.: 1-ACRA-2

Equipment Class: (20) Instrumentation and Control Panels and Cabinets

Equipment Description: CONTROL ROOM AIR HANDLING SUBPANEL #2



P9100111



P9100112

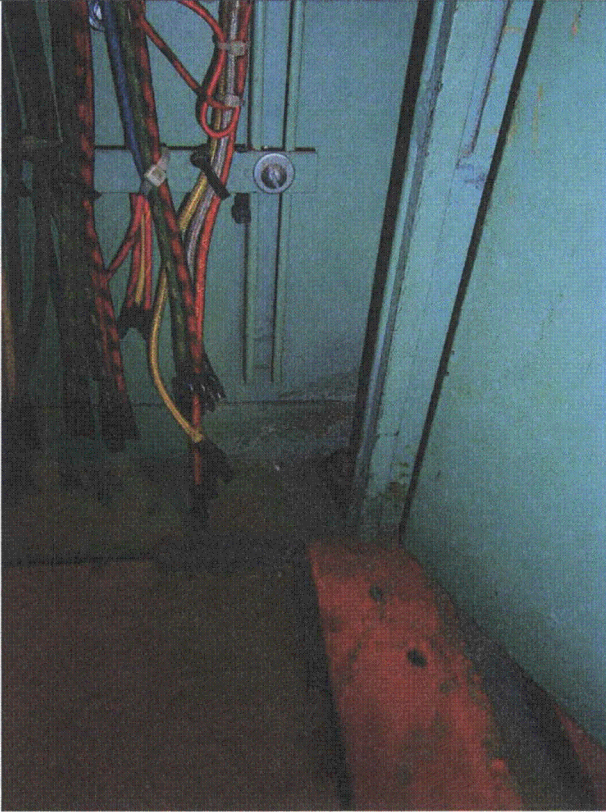
Status:  Y  N  U

**Seismic Walkdown Checklist (SWC)**

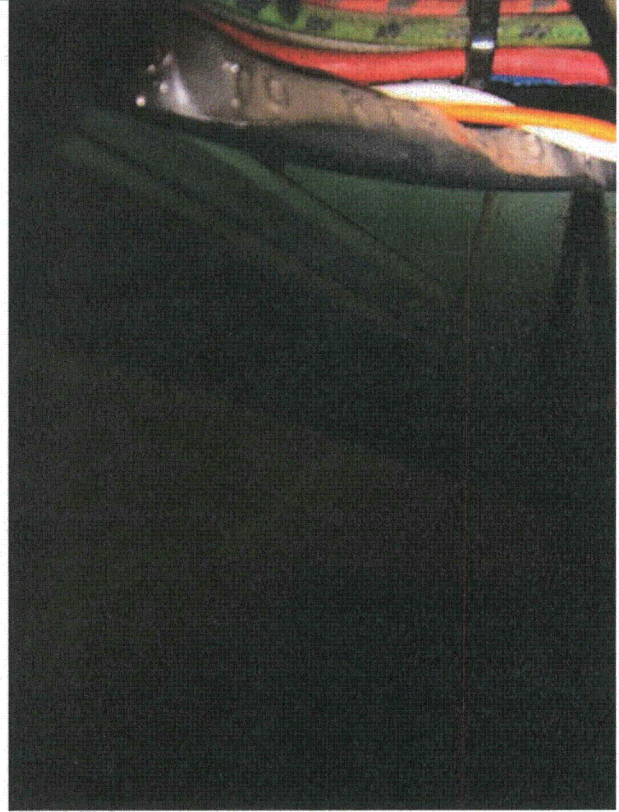
Equipment ID No.: 1-ACRA-2

Equipment Class: (20) Instrumentation and Control Panels and Cabinets

Equipment Description: CONTROL ROOM AIR HANDLING SUBPANEL #2



P9100113



P9100114



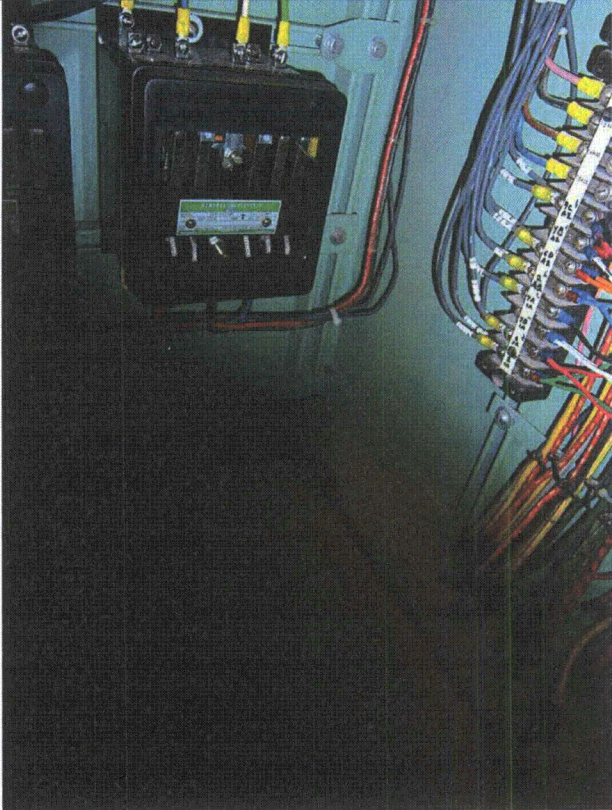
Status:  Y  N  U

**Seismic Walkdown Checklist (SWC)**

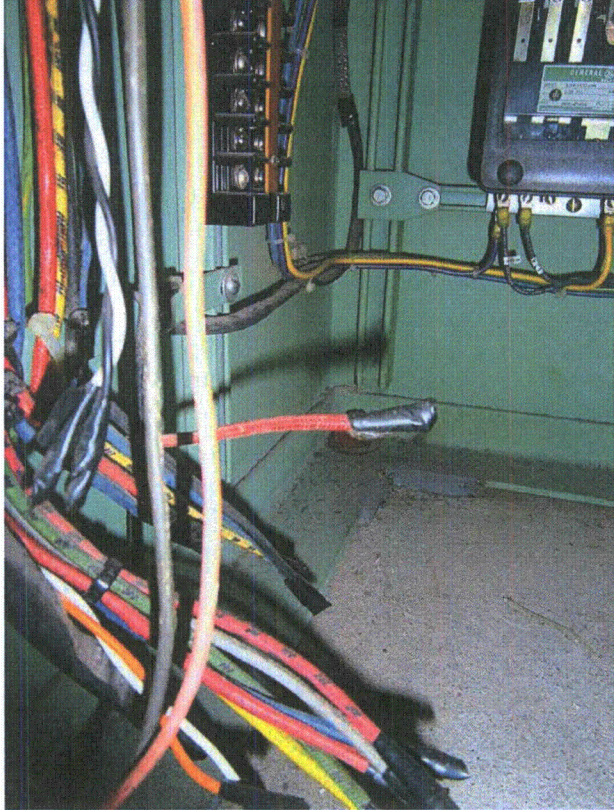
Equipment ID No.: 1-ACRA-2

Equipment Class: (20) Instrumentation and Control Panels and Cabinets

Equipment Description: CONTROL ROOM AIR HANDLING SUBPANEL #2



P9100115



P9100116

Status:  Y  N  U

**Seismic Walkdown Checklist (SWC)**

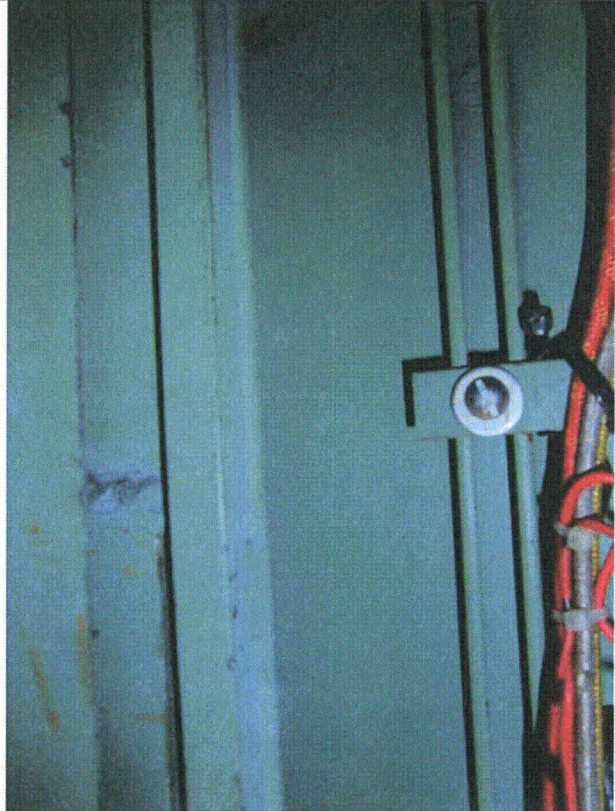
Equipment ID No.: 1-ACRA-2

Equipment Class: (20) Instrumentation and Control Panels and Cabinets

Equipment Description: CONTROL ROOM AIR HANDLING SUBPANEL #2



P9100117



P9100118

Status:  Y  N  U

**Seismic Walkdown Checklist (SWC)**

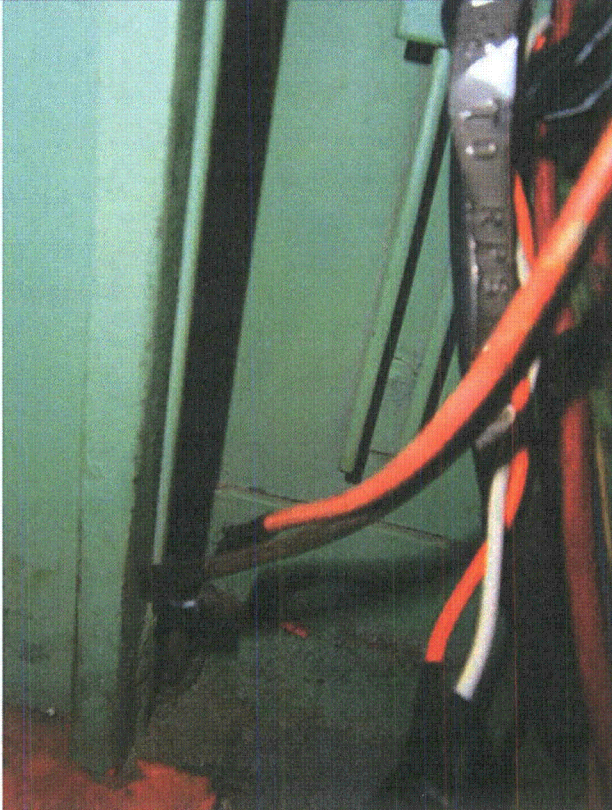
Equipment ID No.: 1-ACRA-2

Equipment Class: (20) Instrumentation and Control Panels and Cabinets

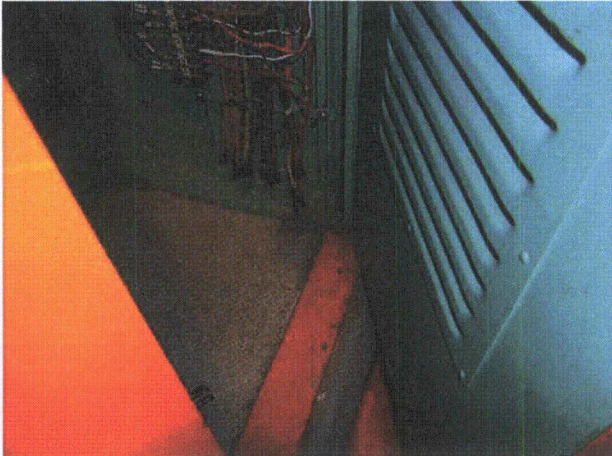
Equipment Description: CONTROL ROOM AIR HANDLING SUBPANEL #2



P9100119



P9100120



P9100121

Status: Y  N  U

### Seismic Walkdown Checklist (SWC)

Equipment ID No.: 1-AM-A

Equipment Class: (1) Motor Control Centers

Equipment Description: 600VAC MOTOR CONTROL CENTER AM-A

Project: DC Cook 1 SWEL

Location (Bldg, Elev,

Room/Area): AB1, 633.00 ft, 633

Manufacturer/Model:

#### Instructions for Completing Checklist

This checklist may be used to document the results of the Seismic Walkdown of an item of equipment on the SWEL. The space below each of the following questions may be used to record the results of judgments and findings. Additional space is provided at the end of this checklist for documenting other comments.

#### Anchorage

1. Is anchorage configuration verification required (i.e., is the item one of the 50% of SWEL items requiring such verification)? Yes  
*SQUG 1-AM-A REV0*
  
2. Is the anchorage free of bent, broken, missing or loose hardware? Yes  
*2 J Bolts in corners on both sides (front and back) 4 Red Heads in front & 4 Red Heads in back*
  
3. Is the anchorage free of corrosion that is more than mild surface oxidation? Yes
  
4. Is the anchorage free of visible cracks in the concrete near the anchors? Yes
  
5. Is the anchorage configuration consistent with plant documentation? Yes  
(Note: This question only applies if the item is one of the 50% for which an anchorage configuration verification is required.)
  
6. Based on the above anchorage evaluations, is the anchorage free of potentially adverse seismic conditions? Yes

Status: Y  N  U

**Seismic Walkdown Checklist (SWC)**

Equipment ID No.: 1-AM-A

Equipment Class: (1) Motor Control Centers

Equipment Description: 600VAC MOTOR CONTROL CENTER AM-A

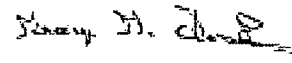
**Interaction Effects**

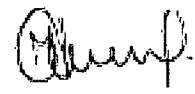
7. Are soft targets free from impact by nearby equipment or structures? No  
*Fire extinguishers on short hooks - AR 2012-11669 was issued.*
8. Are overhead equipment, distribution systems, ceiling tiles and lighting, and masonry block walls not likely to collapse onto the equipment? Yes
9. Do attached lines have adequate flexibility to avoid damage? Yes
10. Based on the above seismic interaction evaluations, is equipment free of potentially adverse seismic interaction effects? No

**Other Adverse Conditions**

11. Have you looked for and found no adverse seismic conditions that could adversely affect the safety functions of the equipment? Yes

**Comments**

Evaluated by:  George G Thomas Date: 10/18/12

 Neda Stoeva 10/18/12

**Photos**

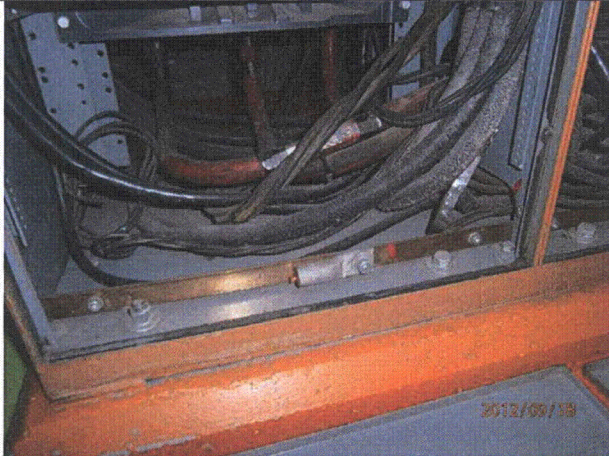
Status: Y  N  U

**Seismic Walkdown Checklist (SWC)**

Equipment ID No.: 1-AM-A

Equipment Class: (1) Motor Control Centers

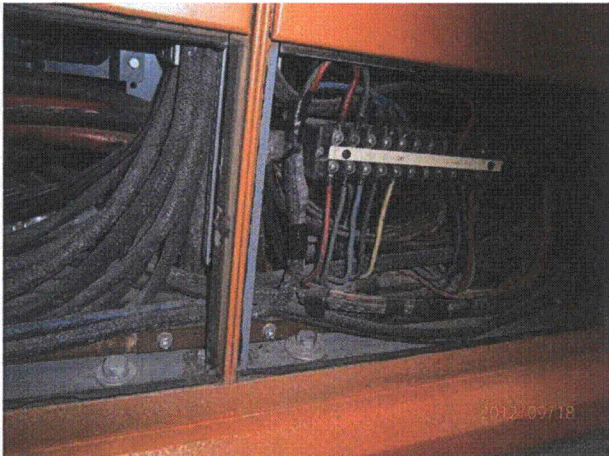
Equipment Description: 600VAC MOTOR CONTROL CENTER AM-A



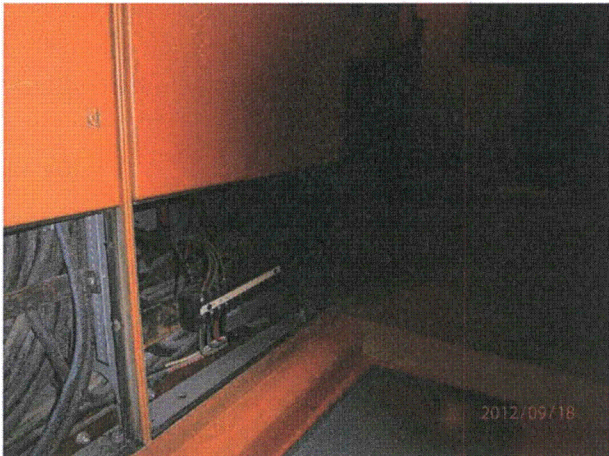
P9181077



P9181078



P9181079



P9181080

Status: Y  N  U

**Seismic Walkdown Checklist (SWC)**

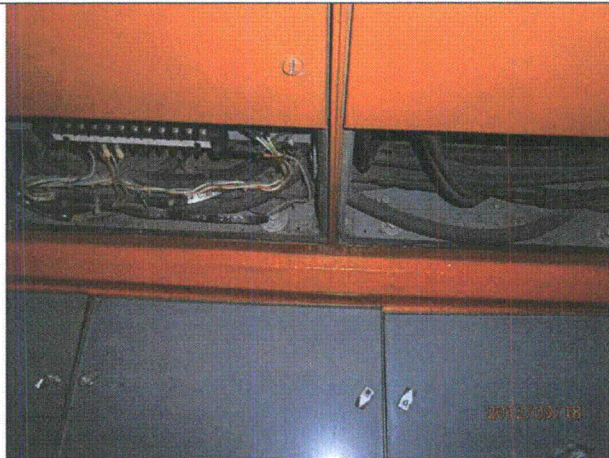
Equipment ID No.: 1-AM-A

Equipment Class: (1) Motor Control Centers

Equipment Description: 600VAC MOTOR CONTROL CENTER AM-A



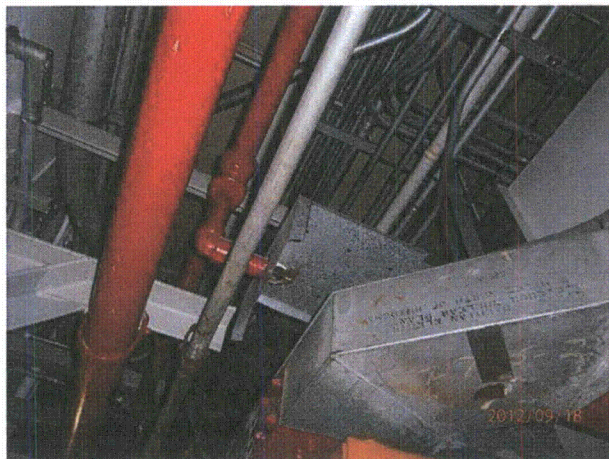
P9181081



P9181082



P9181083



P9181084

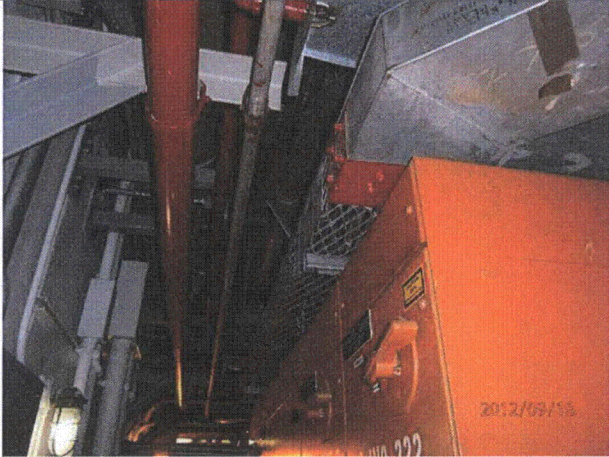
Status: Y  N  U

**Seismic Walkdown Checklist (SWC)**

Equipment ID No.: 1-AM-A

Equipment Class: (1) Motor Control Centers

Equipment Description: 600VAC MOTOR CONTROL CENTER AM-A



P9181085



Status:  Y  N  U

**Seismic Walkdown Checklist (SWC)**

Equipment ID No.: 1-BATT-AB

Equipment Class: (15) Batteries on Racks

Equipment Description: PLANT BATTERY AB

Project: DC Cook 1 SWEL

Location (Bldg, Elev,

Room/Area): AB1, 609.00 ft, 200

Manufacturer/Model:

**Instructions for Completing Checklist**

This checklist may be used to document the results of the Seismic Walkdown of an item of equipment on the SWEL. The space below each of the following questions may be used to record the results of judgments and findings. Additional space is provided at the end of this checklist for documenting other comments.

**Anchorage**

1. Is anchorage configuration verification required (i.e., is the item one of the 50% of SWEL items requiring such verification)? Yes  
*SQUG 1-BATT-AB REV0*
  
2. Is the anchorage free of bent, broken, missing or loose hardware? Yes
  
3. Is the anchorage free of corrosion that is more than mild surface oxidation? Yes  
*Very minor oxidation on base plate of front plate on right side batteries*
  
4. Is the anchorage free of visible cracks in the concrete near the anchors? Yes
  
5. Is the anchorage configuration consistent with plant documentation? Yes  
(Note: This question only applies if the item is one of the 50% for which an anchorage configuration verification is required.)
  
6. Based on the above anchorage evaluations, is the anchorage free of potentially adverse seismic conditions? Yes

Status:  Y  N  U

**Seismic Walkdown Checklist (SWC)**

Equipment ID No.: 1-BATT-AB

Equipment Class: (15) Batteries on Racks

Equipment Description: PLANT BATTERY AB

**Interaction Effects**

7. Are soft targets free from impact by nearby equipment or structures? Yes
8. Are overhead equipment, distribution systems, ceiling tiles and lighting, and masonry block walls not likely to collapse onto the equipment? Yes
9. Do attached lines have adequate flexibility to avoid damage? Yes
10. Based on the above seismic interaction evaluations, is equipment free of potentially adverse seismic interaction effects? Yes

**Other Adverse Conditions**

11. Have you looked for and found no adverse seismic conditions that could adversely affect the safety functions of the equipment? Yes

**Comments**

Evaluated by:  George G Thomas Date: 10/18/12

 Neda Stoeva 10/18/12

**Photos**

Status:  Y  N  U

**Seismic Walkdown Checklist (SWC)**

Equipment ID No.: 1-BATT-AB

Equipment Class: (15) Batteries on Racks

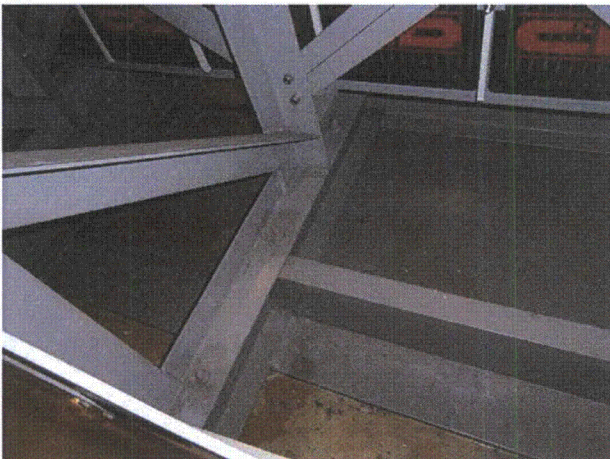
Equipment Description: PLANT BATTERY AB



P9170686



P9170687



P9170688



P9170689

Status:  Y  N  U

**Seismic Walkdown Checklist (SWC)**

Equipment ID No.: 1-BATT-AB

Equipment Class: (15) Batteries on Racks

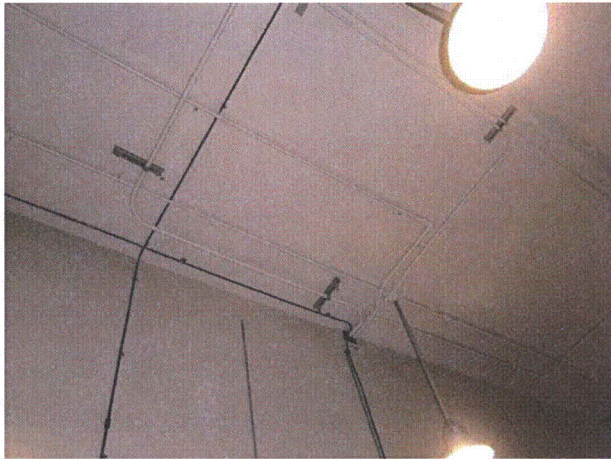
Equipment Description: PLANT BATTERY AB



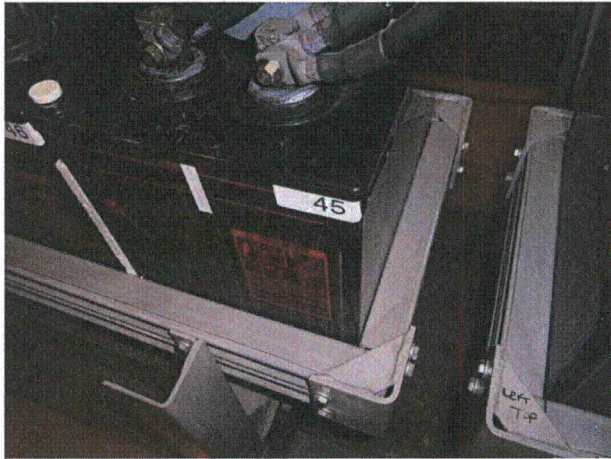
P9170690



P9170691



P9170692



P9170693

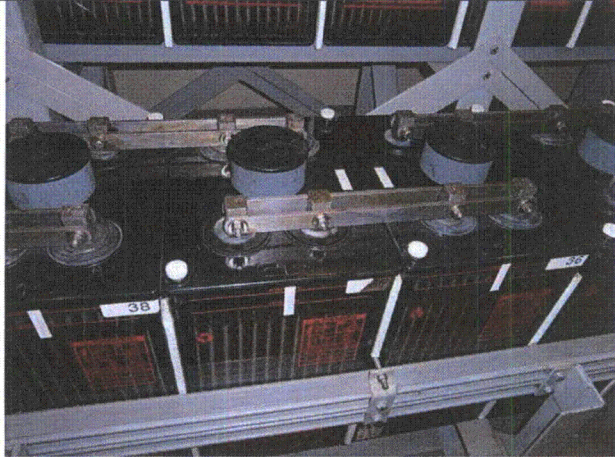
Status:  Y  N  U

**Seismic Walkdown Checklist (SWC)**

Equipment ID No.: 1-BATT-AB

Equipment Class: (15) Batteries on Racks

Equipment Description: PLANT BATTERY AB



P9170694

Status:  Y  N  U

**Seismic Walkdown Checklist (SWC)**

Equipment ID No.: 1-BC-AB

Equipment Class: (20) Instrumentation and Control Panels and Cabinets

Equipment Description: PLANT BATTERY BATT-AB CONTROL PANEL

Project: DC Cook 1 SWEL

Location (Bldg, Elev,

Room/Area): AB1, 613.00 ft, 205

Manufacturer/Model:

**Instructions for Completing Checklist**

This checklist may be used to document the results of the Seismic Walkdown of an item of equipment on the SWEL. The space below each of the following questions may be used to record the results of judgments and findings. Additional space is provided at the end of this checklist for documenting other comments.

**Anchorage**

1. Is anchorage configuration verification required (i.e., is the item one of the 50% of SWEL items requiring such verification)? Yes  
*DWG-PS1-91031-0*
  
2. Is the anchorage free of bent, broken, missing or loose hardware? Yes
  
3. Is the anchorage free of corrosion that is more than mild surface oxidation? Yes
  
4. Is the anchorage free of visible cracks in the concrete near the anchors? Yes
  
5. Is the anchorage configuration consistent with plant documentation? Yes  
(Note: This question only applies if the item is one of the 50% for which an anchorage configuration verification is required.)
  
6. Based on the above anchorage evaluations, is the anchorage free of potentially adverse seismic conditions? Yes

Status:  Y  N  U

**Seismic Walkdown Checklist (SWC)**

Equipment ID No.: 1-BC-AB

Equipment Class: (20) Instrumentation and Control Panels and Cabinets

Equipment Description: PLANT BATTERY BATT-AB CONTROL PANEL

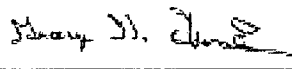
**Interaction Effects**

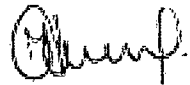
7. Are soft targets free from impact by nearby equipment or structures? Yes
8. Are overhead equipment, distribution systems, ceiling tiles and lighting, and masonry block walls not likely to collapse onto the equipment? Yes
9. Do attached lines have adequate flexibility to avoid damage? Yes
10. Based on the above seismic interaction evaluations, is equipment free of potentially adverse seismic interaction effects? Yes

**Other Adverse Conditions**

11. Have you looked for and found no adverse seismic conditions that could adversely affect the safety functions of the equipment? Yes

**Comments**

Evaluated by:  George G Thomas Date: 10/18/12

 Neda Stoeva 10/18/12

**Photos**

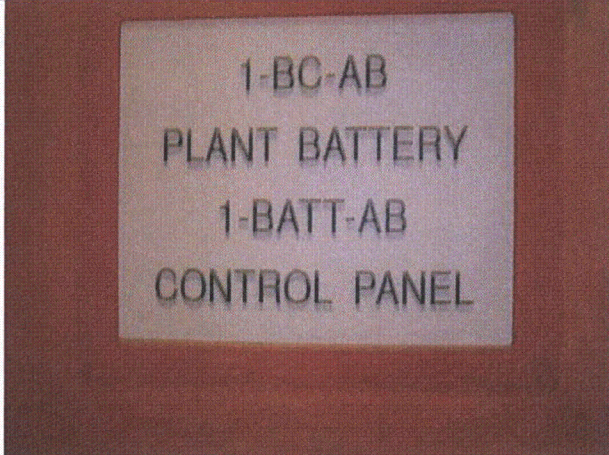
Status:  Y  N  U

**Seismic Walkdown Checklist (SWC)**

Equipment ID No.: 1-BC-AB

Equipment Class: (20) Instrumentation and Control Panels and Cabinets

Equipment Description: PLANT BATTERY BATT-AB CONTROL PANEL



P9170653



P9170654



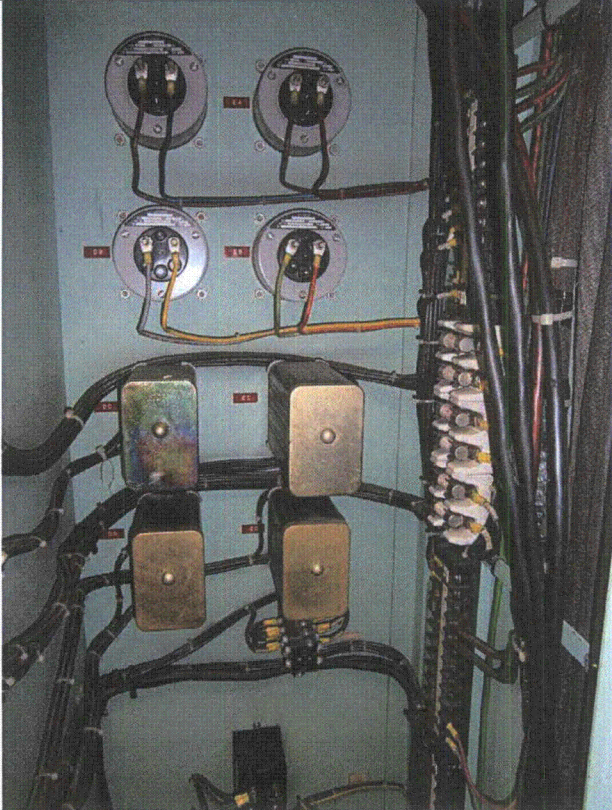
Status:  Y  N  U

**Seismic Walkdown Checklist (SWC)**

Equipment ID No.: 1-BC-AB

Equipment Class: (20) Instrumentation and Control Panels and Cabinets

Equipment Description: PLANT BATTERY BATT-AB CONTROL PANEL



P9170655



P9170656



P9170657



P9170658

Status:  Y  N  U

**Seismic Walkdown Checklist (SWC)**

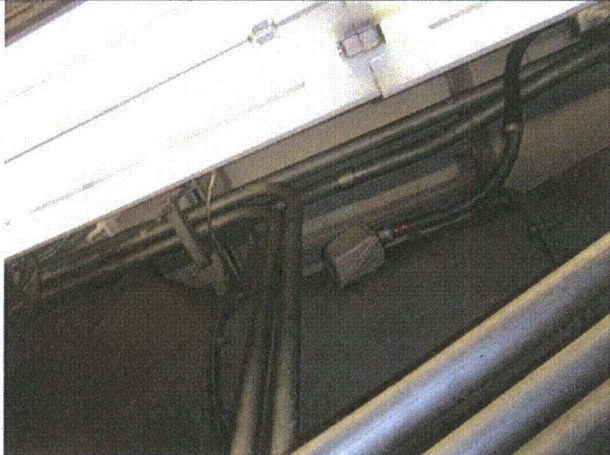
Equipment ID No.: 1-BC-AB

Equipment Class: (20) Instrumentation and Control Panels and Cabinets

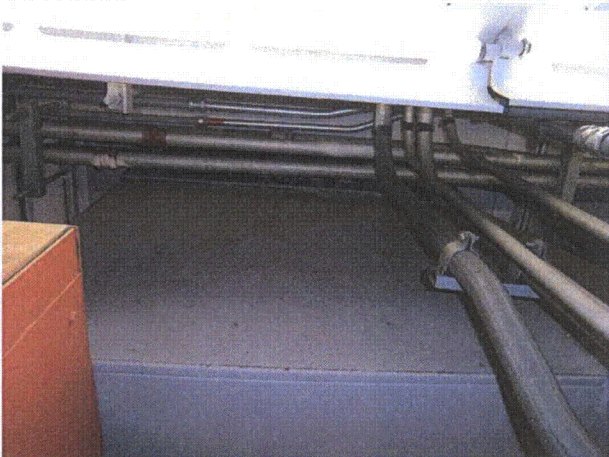
Equipment Description: PLANT BATTERY BATT-AB CONTROL PANEL



P9170659



P9170660



P9170661

Status:  Y  N  U

**Seismic Walkdown Checklist (SWC)**

Equipment ID No.: 1-BC-AB1

Equipment Class: (16) Inverters

Equipment Description: PLANT BATTERY BATT-AB BATTERY CHARGER #1

Project: DC Cook 1 SWEL

Location (Bldg, Elev,

Room/Area): AB1, 613.00 ft, 205

Manufacturer/Model: \_\_\_\_\_

**Instructions for Completing Checklist**

This checklist may be used to document the results of the Seismic Walkdown of an item of equipment on the SWEL. The space below each of the following questions may be used to record the results of judgments and findings. Additional space is provided at the end of this checklist for documenting other comments.

**Anchorage**

1. Is anchorage configuration verification required (i.e., is the item one of the 50% of SWEL items requiring such verification)? Yes  
*SQUG 1-BC-AB1 REV0*
  
2. Is the anchorage free of bent, broken, missing or loose hardware? Yes
  
3. Is the anchorage free of corrosion that is more than mild surface oxidation? Yes  
*Painted*
  
4. Is the anchorage free of visible cracks in the concrete near the anchors? Yes
  
5. Is the anchorage configuration consistent with plant documentation? Yes  
(Note: This question only applies if the item is one of the 50% for which an anchorage configuration verification is required.)
  
6. Based on the above anchorage evaluations, is the anchorage free of potentially adverse seismic conditions? Yes

Status:  Y  N  U

**Seismic Walkdown Checklist (SWC)**

Equipment ID No.: 1-BC-AB1

Equipment Class: (16) Inverters

Equipment Description: PLANT BATTERY BATT-AB BATTERY CHARGER #1

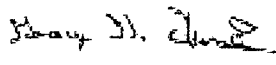
**Interaction Effects**


7. Are soft targets free from impact by nearby equipment or structures? Yes
8. Are overhead equipment, distribution systems, ceiling tiles and lighting, and masonry block walls not likely to collapse onto the equipment? Yes
9. Do attached lines have adequate flexibility to avoid damage? Yes
10. Based on the above seismic interaction evaluations, is equipment free of potentially adverse seismic interaction effects? Yes

**Other Adverse Conditions**

11. Have you looked for and found no adverse seismic conditions that could adversely affect the safety functions of the equipment? Yes

**Comments**

Evaluated by:  George G Thomas Date: 10/18/12

 Neda Stoeva 10/18/12

**Photos**

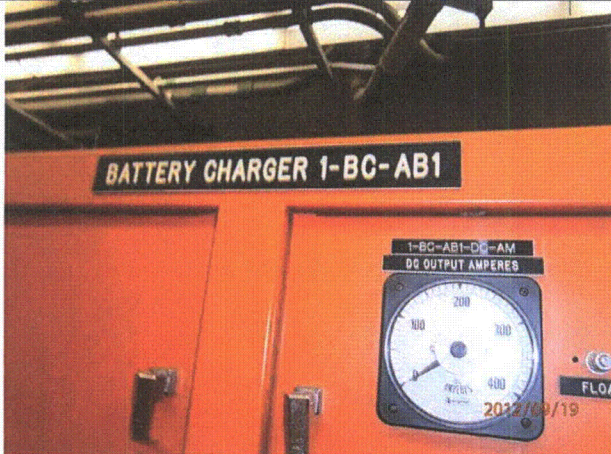
Status:  Y  N  U

**Seismic Walkdown Checklist (SWC)**

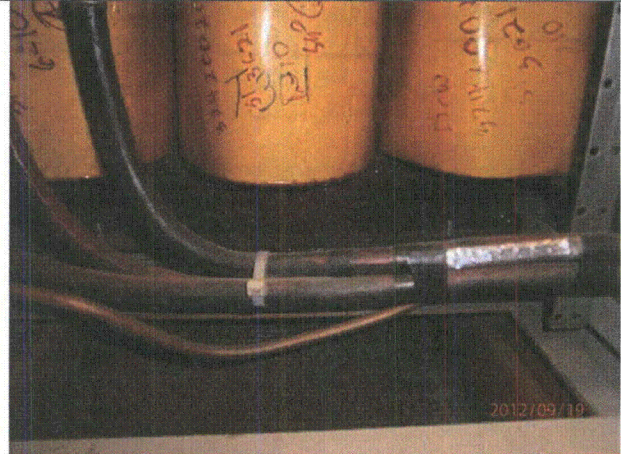
Equipment ID No.: 1-BC-AB1

Equipment Class: (16) Inverters

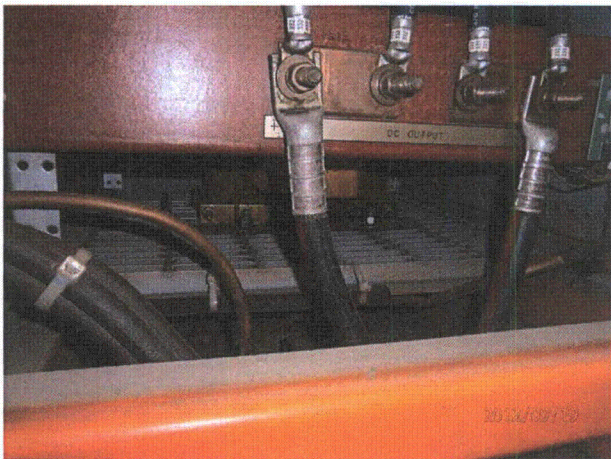
Equipment Description: PLANT BATTERY BATT-AB BATTERY CHARGER #1



P9190382



P9190383



P9190384



P9190385

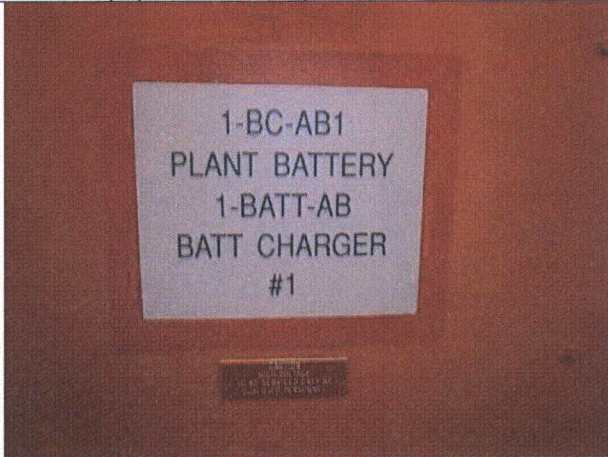
Status:  Y  N  U

**Seismic Walkdown Checklist (SWC)**

Equipment ID No.: 1-BC-AB1

Equipment Class: (16) Inverters

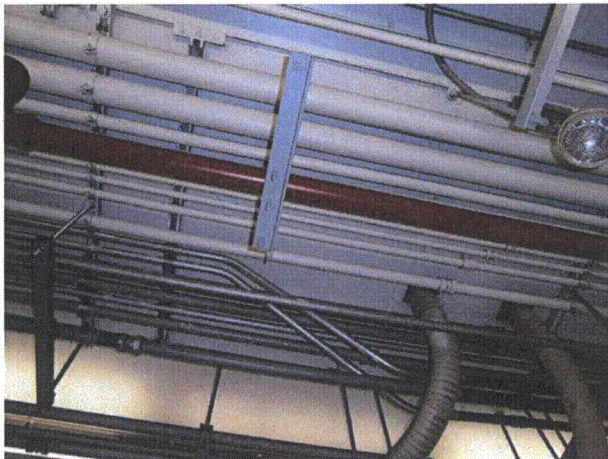
Equipment Description: PLANT BATTERY BATT-AB BATTERY CHARGER #1



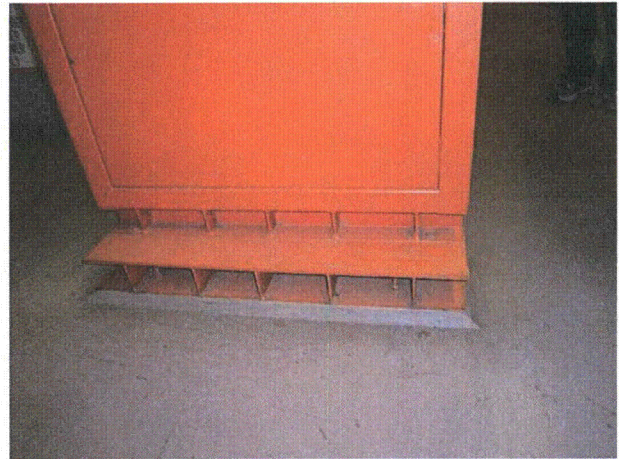
P9170630



P9170631



P9170632



P9170633

Status:  Y  N  U

**Seismic Walkdown Checklist (SWC)**

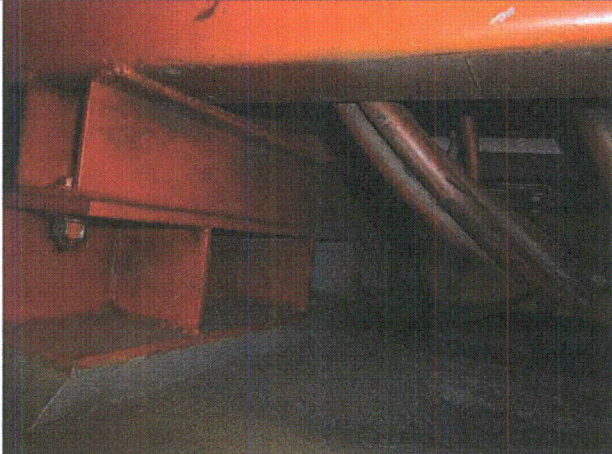
Equipment ID No.: 1-BC-AB1

Equipment Class: (16) Inverters

Equipment Description: PLANT BATTERY BATT-AB BATTERY CHARGER #1



P9170634



P9170635



P9170636



P9170637

Status:  Y  N  U

**Seismic Walkdown Checklist (SWC)**

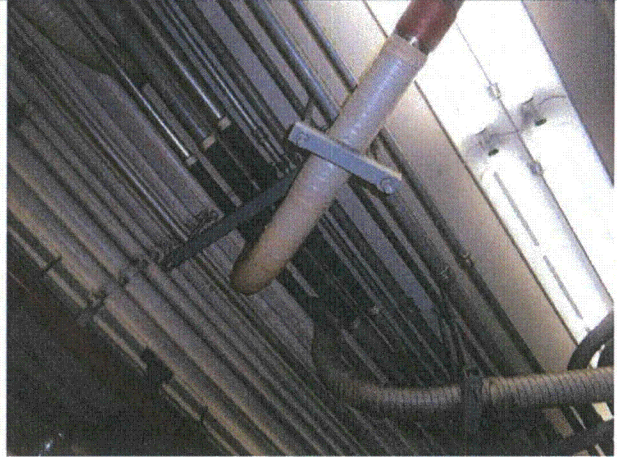
Equipment ID No.: 1-BC-AB1

Equipment Class: (16) Inverters

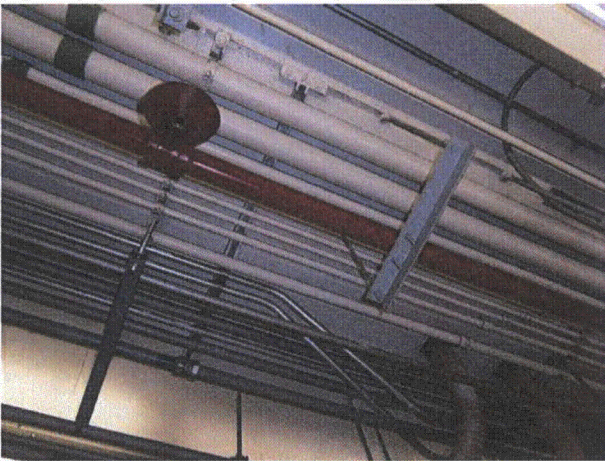
Equipment Description: PLANT BATTERY BATT-AB BATTERY CHARGER #1



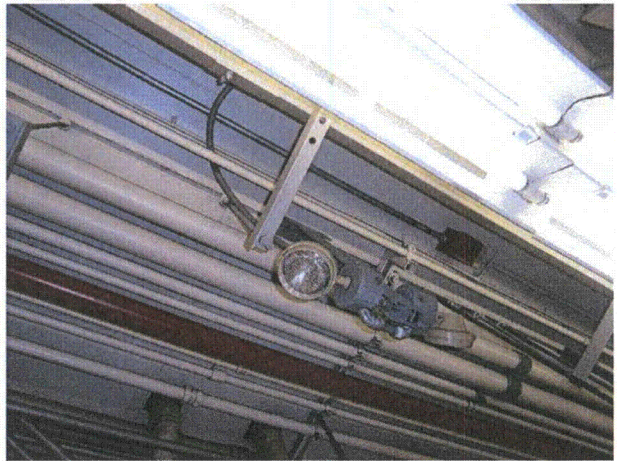
P9170638



P9170639



P9170640



P9170641



Status: Y  N  U

**Seismic Walkdown Checklist (SWC)**

Equipment ID No.: 1-BC-AB2

Equipment Class: (16) Inverters

Equipment Description: PLANT BATTERY BATT-AB CHARGER #2

Project: DC Cook 1 SWEL

Location (Bldg, Elev,

Room/Area): AB1, 613.00 ft, 205

Manufacturer/Model: \_\_\_\_\_

**Instructions for Completing Checklist**

This checklist may be used to document the results of the Seismic Walkdown of an item of equipment on the SWEL. The space below each of the following questions may be used to record the results of judgments and findings. Additional space is provided at the end of this checklist for documenting other comments.

**Anchorage**

1. Is anchorage configuration verification required (i.e., is the item one of the 50% of SWEL items requiring such verification)? No
  
2. Is the anchorage free of bent, broken, missing or loose hardware? Yes
  
3. Is the anchorage free of corrosion that is more than mild surface oxidation? Yes
  
4. Is the anchorage free of visible cracks in the concrete near the anchors? Yes
  
5. Is the anchorage configuration consistent with plant documentation? Not Applicable  
(Note: This question only applies if the item is one of the 50% for which an anchorage configuration verification is required.)
  
6. Based on the above anchorage evaluations, is the anchorage free of potentially adverse seismic conditions? Yes

Status: Y  N  U

**Seismic Walkdown Checklist (SWC)**

Equipment ID No.: 1-BC-AB2

Equipment Class: (16) Inverters

Equipment Description: PLANT BATTERY BATT-AB CHARGER #2

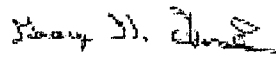
**Interaction Effects**


7. Are soft targets free from impact by nearby equipment or structures? Yes
8. Are overhead equipment, distribution systems, ceiling tiles and lighting, and masonry block walls not likely to collapse onto the equipment? No  
*Fire extinguishers on short hooks - AR 2012- 11669 was issued.*
9. Do attached lines have adequate flexibility to avoid damage? Yes
10. Based on the above seismic interaction evaluations, is equipment free of potentially adverse seismic interaction effects? No

**Other Adverse Conditions**

11. Have you looked for and found no adverse seismic conditions that could adversely affect the safety functions of the equipment? Yes

**Comments**

Evaluated by:  George G Thomas Date: 10/18/12

 Neda Stoeva 10/18/12

**Photos**

Status: Y  N  U

**Seismic Walkdown Checklist (SWC)**

Equipment ID No.: 1-BC-AB2

Equipment Class: (16) Inverters

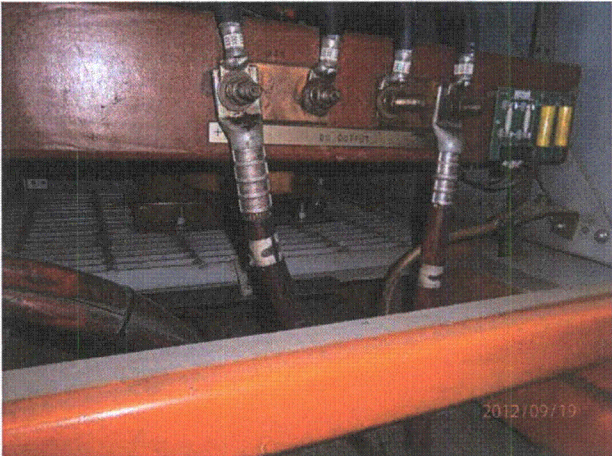
Equipment Description: PLANT BATTERY BATT-AB CHARGER #2



P9190378



P9190379



P9190380



P9190381

Status: Y  N  U

**Seismic Walkdown Checklist (SWC)**

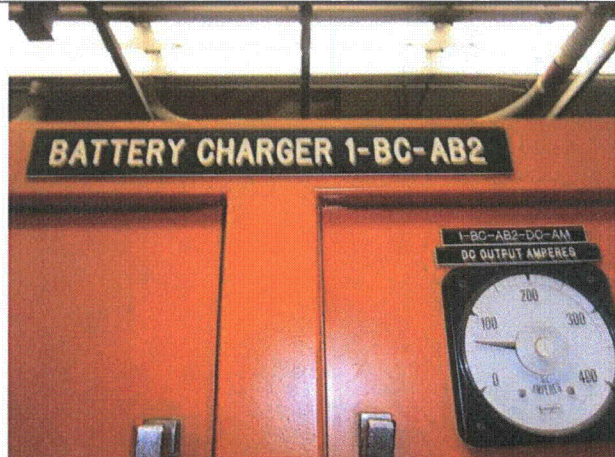
Equipment ID No.: 1-BC-AB2

Equipment Class: (16) Inverters

Equipment Description: PLANT BATTERY BATT-AB CHARGER #2



P9170643



P9170644



P9170645



P9170646

Status: Y  N  U

**Seismic Walkdown Checklist (SWC)**

Equipment ID No.: 1-BC-AB2

Equipment Class: (16) Inverters

Equipment Description: PLANT BATTERY BATT-AB CHARGER #2



P9170647



P9170648



P9170649



P9170650

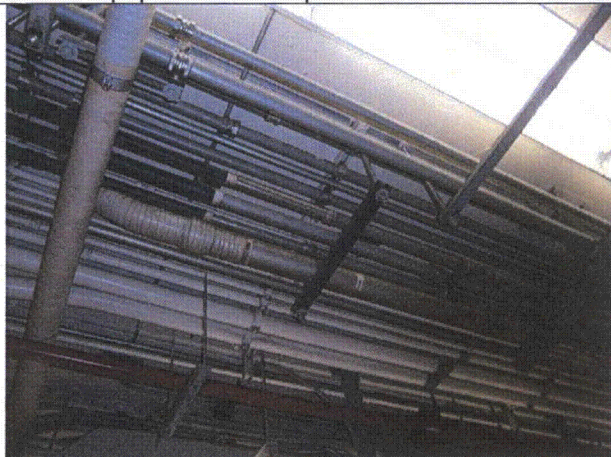
Status: Y  N  U

**Seismic Walkdown Checklist (SWC)**

Equipment ID No.: 1-BC-AB2

Equipment Class: (16) Inverters

Equipment Description: PLANT BATTERY BATT-AB CHARGER #2



P9170651

Status: Y N  U

**Seismic Walkdown Checklist (SWC)**

Equipment ID No.: 1-BCTC-AB

Equipment Class: (14) Distribution Panels

Equipment Description: PLANT BATTERY CHARGERS BC-AB1 AND BC-AB2 TRANSFER

Project: DC Cook 1 SWEL

Location (Bldg, Elev,

Room/Area): AB1, 613.00 ft, 205

Manufacturer/Model: \_\_\_\_\_

**Instructions for Completing Checklist**

This checklist may be used to document the results of the Seismic Walkdown of an item of equipment on the SWEL. The space below each of the following questions may be used to record the results of judgments and findings. Additional space is provided at the end of this checklist for documenting other comments.

**Anchorage**

- |   |         |
|---|---------|
| 1. Is anchorage configuration verification required (i.e., is the item one of the 50% of SWEL items requiring such verification)?   | Yes     |
| <i>COULD NOT OPEN - SQUG 1-BCTC-AB REV0</i>   |         |
| 2. Is the anchorage free of bent, broken, missing or loose hardware?  | Unknown |
| <i>Cannot open - cannot see anchorage</i>   |         |
| 3. Is the anchorage free of corrosion that is more than mild surface oxidation?   | Unknown |
| <i>Cannot open - cannot see anchorage</i>   |         |
| 4. Is the anchorage free of visible cracks in the concrete near the anchors?  | Unknown |
| <i>Cannot open - cannot see anchorage</i>   |         |
| 5. Is the anchorage configuration consistent with plant documentation?<br>(Note: This question only applies if the item is one of the 50% for which an anchorage configuration verification is required.) | Unknown |
| <i>Cannot open - cannot see anchorage</i>   |         |
| 6. Based on the above anchorage evaluations, is the anchorage free of potentially adverse seismic conditions?   | Unknown |

Status: Y N  U

**Seismic Walkdown Checklist (SWC)**

Equipment ID No.: 1-BCTC-AB

Equipment Class: (14) Distribution Panels

Equipment Description: PLANT BATTERY CHARGERS BC-AB1 AND BC-AB2 TRANSFER

**Interaction Effects**

7. Are soft targets free from impact by nearby equipment or structures? Yes
8. Are overhead equipment, distribution systems, ceiling tiles and lighting, and masonry block walls not likely to collapse onto the equipment? No  
*Fire extinguishers on short hooks - AR 2012- 11669 was issued.*
9. Do attached lines have adequate flexibility to avoid damage? Yes
10. Based on the above seismic interaction evaluations, is equipment free of potentially adverse seismic interaction effects? No

**Other Adverse Conditions**

11. Have you looked for and found no adverse seismic conditions that could adversely affect the safety functions of the equipment? Unknown  
*Could not open due to safety concerns during online walkdown.  
Completed inspection during DCCNP1 Unit 1 Outage Walkdown.  
Checklist included in report following Table C-3.*



**Comments**

Evaluated by: George G Thomas Date: 08/15/2013  
Neda Stoeva 08/15/2013

**Photos**



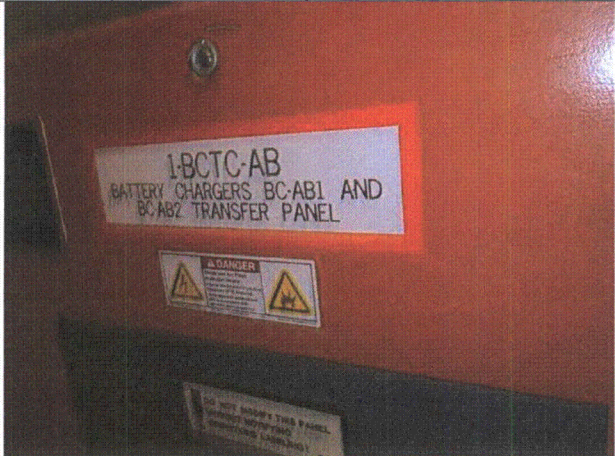
Status: Y N  U

**Seismic Walkdown Checklist (SWC)**

Equipment ID No.: 1-BCTC-AB

Equipment Class: (14) Distribution Panels

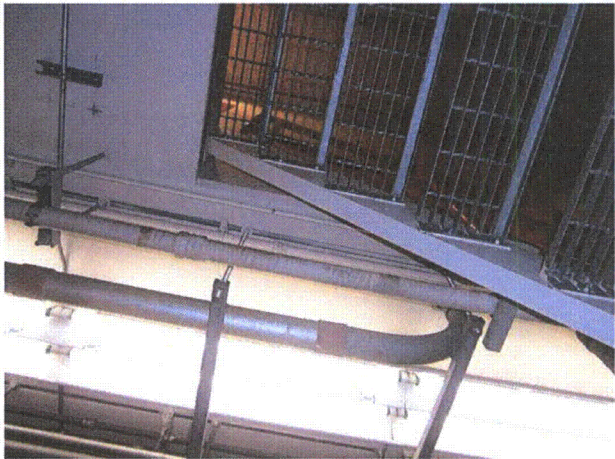
Equipment Description: PLANT BATTERY CHARGERS BC-AB1 AND BC-AB2 TRANSFER



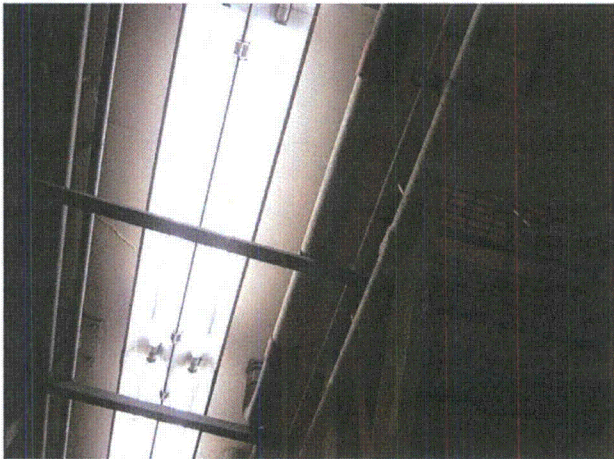
P9170663



P9170664



P9170665



P9170666

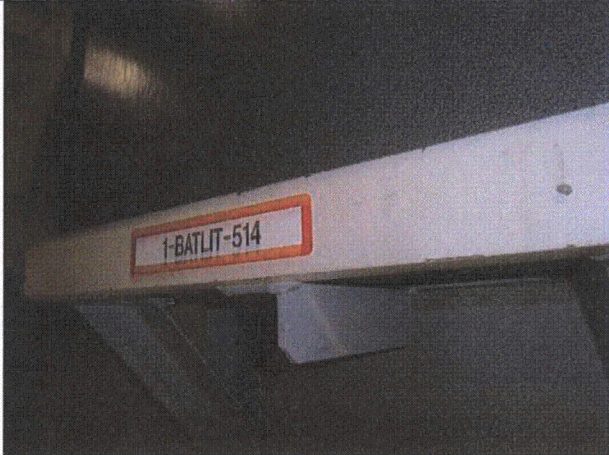
Status: Y N  U

**Seismic Walkdown Checklist (SWC)**

Equipment ID No.: 1-BCTC-AB

Equipment Class: (14) Distribution Panels

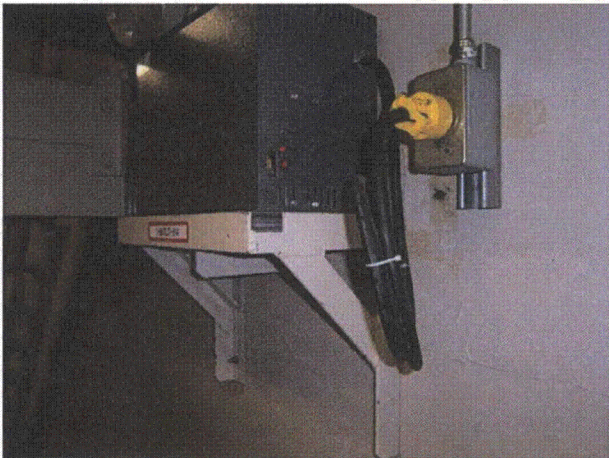
Equipment Description: PLANT BATTERY CHARGERS BC-AB1 AND BC-AB2 TRANSFER



P9170667



P9170668



P9170669

Status:  Y  N  U

**Seismic Walkdown Checklist (SWC)**

Equipment ID No.: 1-BLI-130

Equipment Class: (18) Instruments on Racks

Equipment Description: STEAM GENERATOR OME-3-3 WIDE RANGE LEVEL INDICATOR  
TRANSMITTER

Project: DC Cook 1 SWEL

Location (Bldg, Elev,

Room/Area): CON1, 612.00 ft, 73

Manufacturer/Model: \_\_\_\_\_

**Instructions for Completing Checklist**

This checklist may be used to document the results of the Seismic Walkdown of an item of equipment on the SWEL. The space below each of the following questions may be used to record the results of judgments and findings. Additional space is provided at the end of this checklist for documenting other comments.

**Anchorage**

- |   |     |
|---|-----|
| 1. Is anchorage configuration verification required (i.e., is the item one of the 50% of SWEL items requiring such verification)?<br><i>Dwg. 1-5570P.</i>   | Yes |
| 2. Is the anchorage free of bent, broken, missing or loose hardware?  | Yes |
| 3. Is the anchorage free of corrosion that is more than mild surface oxidation?   | Yes |
| 4. Is the anchorage free of visible cracks in the concrete near the anchors?  | Yes |
| 5. Is the anchorage configuration consistent with plant documentation?<br>(Note: This question only applies if the item is one of the 50% for which an anchorage configuration verification is required.) | Yes |
| 6. Based on the above anchorage evaluations, is the anchorage free of potentially adverse seismic conditions?   | Yes |



Status:  Y  N  U

**Seismic Walkdown Checklist (SWC)**

Equipment ID No.: 1-BLI-130

Equipment Class: (18) Instruments on Racks

Equipment Description: STEAM GENERATOR OME-3-3 WIDE RANGE LEVEL INDICATOR  
TRANSMITTER

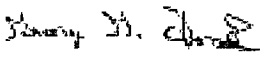
**Interaction Effects**

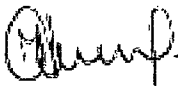
7. Are soft targets free from impact by nearby equipment or structures? Yes
8. Are overhead equipment, distribution systems, ceiling tiles and lighting, and masonry block walls not likely to collapse onto the equipment? Yes
9. Do attached lines have adequate flexibility to avoid damage? Yes
10. Based on the above seismic interaction evaluations, is equipment free of potentially adverse seismic interaction effects? Yes

**Other Adverse Conditions**

11. Have you looked for and found no adverse seismic conditions that could adversely affect the safety functions of the equipment? Yes

**Comments**

Evaluated by:  George G Thomas Date: 08/15/2013

 Neda Stoeva 08/15/2013

**Photos**

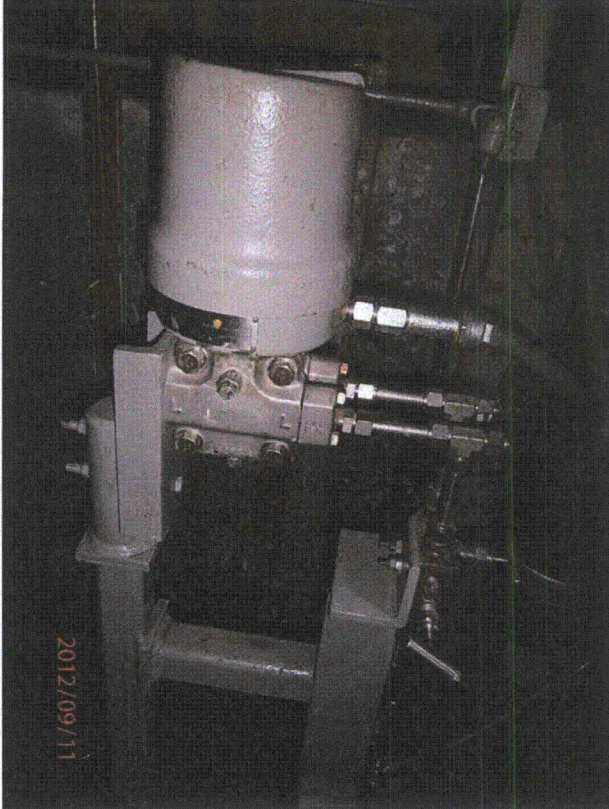
Status:  Y  N  U

**Seismic Walkdown Checklist (SWC)**

Equipment ID No.: 1-BLI-130

Equipment Class: (18) Instruments on Racks  
STEAM GENERATOR OME-3-3 WIDE RANGE LEVEL INDICATOR

Equipment Description: TRANSMITTER



P9110314



P9110315

Status:  Y  N  U

**Seismic Walkdown Checklist (SWC)**

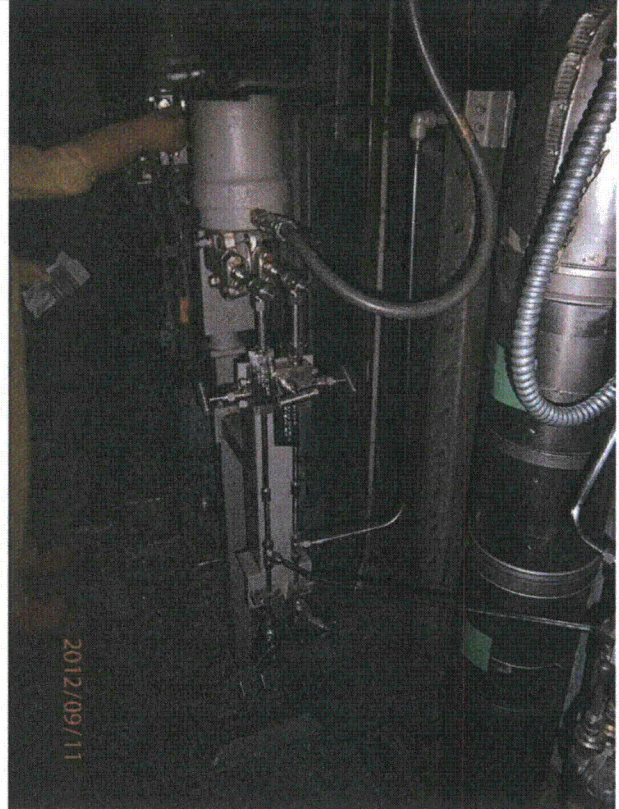
Equipment ID No.: 1-BLI-130

Equipment Class: (18) Instruments on Racks  
STEAM GENERATOR OME-3-3 WIDE RANGE LEVEL INDICATOR

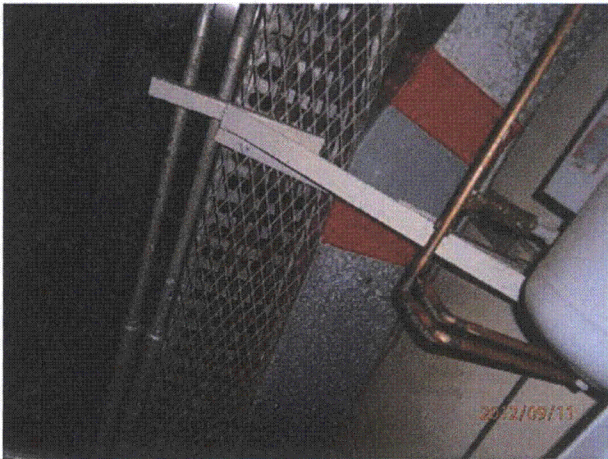
Equipment Description: TRANSMITTER



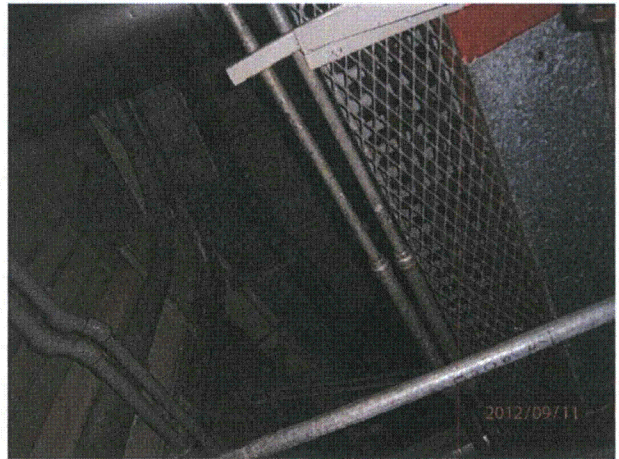
P9110316



P9110317



P9110318



P9110319

Status:  Y  N  U

**Seismic Walkdown Checklist (SWC)**

Equipment ID No.: 1-BLP-132

Equipment Class: (18) Instruments on Racks

Equipment Description: STEAM GENERATOR OME-3-1 CHANNEL III REACTOR

Project: DC Cook 1 SWEL

Location (Bldg, Elev,

Room/Area): CON1, 612.00 ft, 72

Manufacturer/Model: \_\_\_\_\_

**Instructions for Completing Checklist**

This checklist may be used to document the results of the Seismic Walkdown of an item of equipment on the SWEL. The space below each of the following questions may be used to record the results of judgments and findings. Additional space is provided at the end of this checklist for documenting other comments.

**Anchorage**

- |   |                |
|---|----------------|
| 1. Is anchorage configuration verification required (i.e., is the item one of the 50% of SWEL items requiring such verification)?   | No             |
| 2. Is the anchorage free of bent, broken, missing or loose hardware?  | Yes            |
| 3. Is the anchorage free of corrosion that is more than mild surface oxidation?   | Yes            |
| 4. Is the anchorage free of visible cracks in the concrete near the anchors?  | Yes            |
| 5. Is the anchorage configuration consistent with plant documentation?<br>(Note: This question only applies if the item is one of the 50% for which an anchorage configuration verification is required.) | Not Applicable |
| 6. Based on the above anchorage evaluations, is the anchorage free of potentially adverse seismic conditions?   | Yes            |

Status:  Y  N  U

**Seismic Walkdown Checklist (SWC)**

Equipment ID No.: 1-BLP-132

Equipment Class: (18) Instruments on Racks

Equipment Description: STEAM GENERATOR OME-3-1 CHANNEL III REACTOR

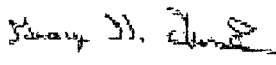
**Interaction Effects**


7. Are soft targets free from impact by nearby equipment or structures? Yes
8. Are overhead equipment, distribution systems, ceiling tiles and lighting, and masonry block walls not likely to collapse onto the equipment? Yes
9. Do attached lines have adequate flexibility to avoid damage? Yes
10. Based on the above seismic interaction evaluations, is equipment free of potentially adverse seismic interaction effects? Yes

**Other Adverse Conditions**

11. Have you looked for and found no adverse seismic conditions that could adversely affect the safety functions of the equipment? Yes

**Comments**

Evaluated by:  George G Thomas Date: 10/18/12

 Neda Stoeva 10/18/12

**Photos**



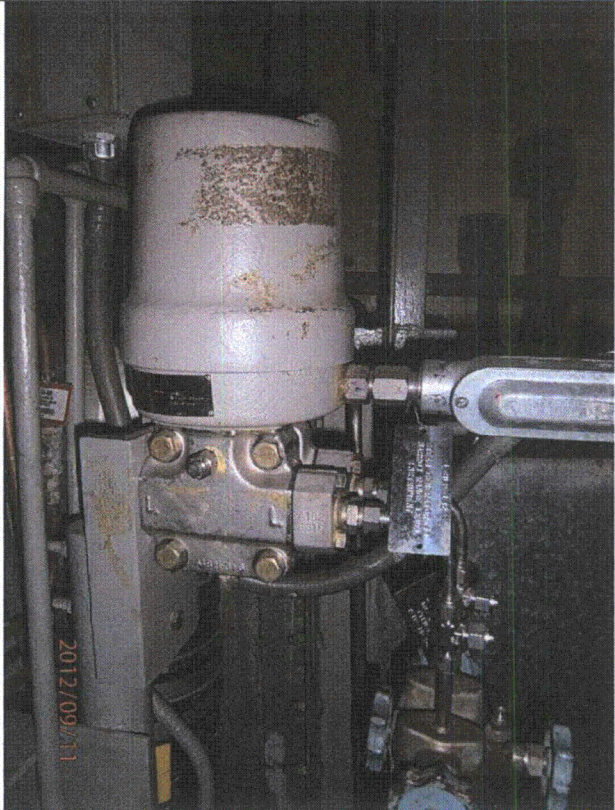
Status:  Y  N  U

**Seismic Walkdown Checklist (SWC)**

Equipment ID No.: 1-BLP-132

Equipment Class: (18) Instruments on Racks

Equipment Description: STEAM GENERATOR OME-3-1 CHANNEL III REACTOR



P9110333



P9110334

Status:  Y  N  U

**Seismic Walkdown Checklist (SWC)**

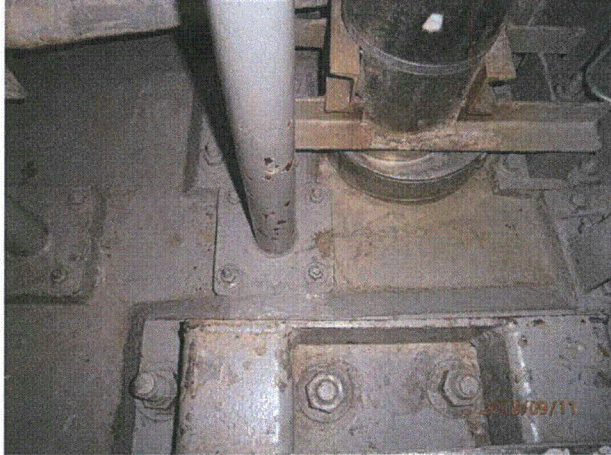
Equipment ID No.: 1-BLP-132

Equipment Class: (18) Instruments on Racks

Equipment Description: STEAM GENERATOR OME-3-1 CHANNEL III REACTOR



P9110335



P9110336

Status:  Y  N  U

**Seismic Walkdown Checklist (SWC)**

Equipment ID No.: 1-CCV-AB

Equipment Class: (14) Distribution Panels

Equipment Description: 250VDC TRAIN 'B' CRITICAL SOLENOID VALVES

Project: DC Cook 1 SWEL

Location (Bldg, Elev,  
Room/Area): AB1, 633.00 ft, 123

Manufacturer/Model: \_\_\_\_\_

**Instructions for Completing Checklist**

This checklist may be used to document the results of the Seismic Walkdown of an item of equipment on the SWEL. The space below each of the following questions may be used to record the results of judgments and findings. Additional space is provided at the end of this checklist for documenting other comments.

**Anchorage**

- |   |                |
|---|----------------|
| 1. Is anchorage configuration verification required (i.e., is the item one of the 50% of SWEL items requiring such verification)?   | No             |
| 2. Is the anchorage free of bent, broken, missing or loose hardware?  | Yes            |
| 3. Is the anchorage free of corrosion that is more than mild surface oxidation?   | Yes            |
| 4. Is the anchorage free of visible cracks in the concrete near the anchors?<br><i>Unistrut mounted</i>   | Not Applicable |
| 5. Is the anchorage configuration consistent with plant documentation?<br>(Note: This question only applies if the item is one of the 50% for which an anchorage configuration verification is required.) | Not Applicable |
| 6. Based on the above anchorage evaluations, is the anchorage free of potentially adverse seismic conditions?   | Yes            |

Status:  Y  N  U

**Seismic Walkdown Checklist (SWC)**

Equipment ID No.: 1-CCV-AB

Equipment Class: (14) Distribution Panels

Equipment Description: 250VDC TRAIN 'B' CRITICAL SOLENOID VALVES

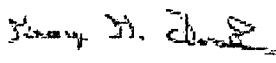
**Interaction Effects**

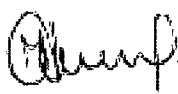
7. Are soft targets free from impact by nearby equipment or structures? Yes
8. Are overhead equipment, distribution systems, ceiling tiles and lighting, and masonry block walls not likely to collapse onto the equipment? Yes  
*Check ceiling tiles - OK - clipped per DWG 12-4070*
9. Do attached lines have adequate flexibility to avoid damage? Yes
10. Based on the above seismic interaction evaluations, is equipment free of potentially adverse seismic interaction effects? Yes

**Other Adverse Conditions**

11. Have you looked for and found no adverse seismic conditions that could adversely affect the safety functions of the equipment? Yes

**Comments**

Evaluated by:  George G Thomas Date: 10/18/12

 Neda Stoeva 10/18/12

**Photos**

Status:  Y  N  U

**Seismic Walkdown Checklist (SWC)**

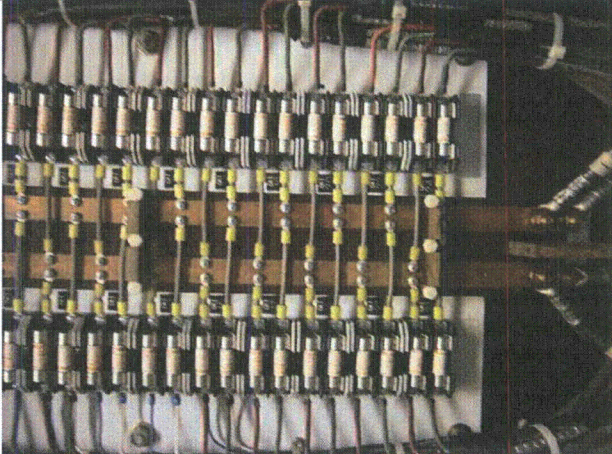
Equipment ID No.: 1-CCV-AB

Equipment Class: (14) Distribution Panels

Equipment Description: 250VDC TRAIN 'B' CRITICAL SOLENOID VALVES



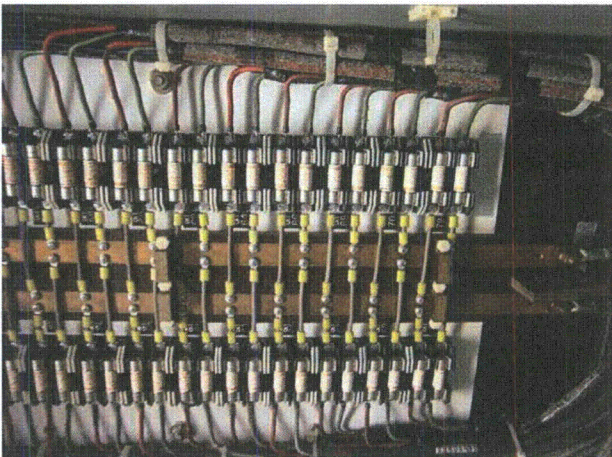
P9191255



P9191257



P9191258



P9191259

Status:  Y  N  U

**Seismic Walkdown Checklist (SWC)**

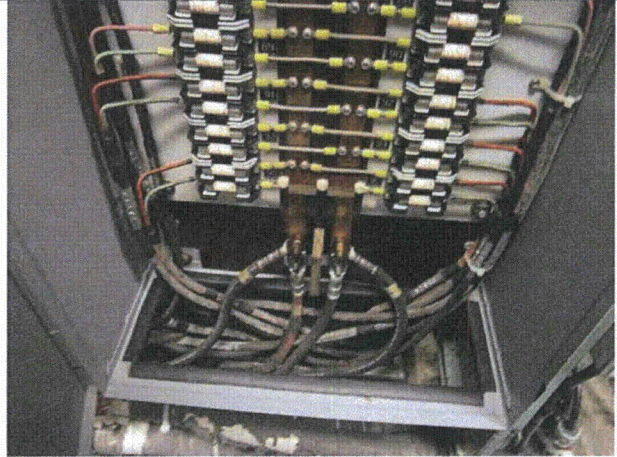
Equipment ID No.: 1-CCV-AB

Equipment Class: (14) Distribution Panels

Equipment Description: 250VDC TRAIN 'B' CRITICAL SOLENOID VALVES



P9191260



P9191261



P9191262



P9191263

Status:  Y  N  U

**Seismic Walkdown Checklist (SWC)**

Equipment ID No.: 1-CCW

Equipment Class: (20) Instrumentation and Control Panels and Cabinets

Equipment Description: COMPONENT COOLING WATER CONTROL PANEL

Project: DC Cook 1 SWEL

Location (Bldg, Elev,

Room/Area): AB1, 633.00 ft, 123

Manufacturer/Model: \_\_\_\_\_

**Instructions for Completing Checklist**

This checklist may be used to document the results of the Seismic Walkdown of an item of equipment on the SWEL. The space below each of the following questions may be used to record the results of judgments and findings. Additional space is provided at the end of this checklist for documenting other comments.

**Anchorage**

1. Is anchorage configuration verification required (i.e., is the item one of the 50% of SWEL items requiring such verification)? No
  
2. Is the anchorage free of bent, broken, missing or loose hardware? Not Applicable  
*Panel CCW does not have its own anchorage plate*
  
3. Is the anchorage free of corrosion that is more than mild surface oxidation? Not Applicable  
*Mounted through the rest of the panels around it*
  
4. Is the anchorage free of visible cracks in the concrete near the anchors? Not Applicable
  
5. Is the anchorage configuration consistent with plant documentation? Not Applicable  
(Note: This question only applies if the item is one of the 50% for which an anchorage configuration verification is required.)
  
6. Based on the above anchorage evaluations, is the anchorage free of potentially adverse seismic conditions? Yes

Status:  Y  N  U

**Seismic Walkdown Checklist (SWC)**

Equipment ID No.: 1-CCW

Equipment Class: (20) Instrumentation and Control Panels and Cabinets

Equipment Description: COMPONENT COOLING WATER CONTROL PANEL

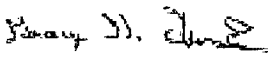
**Interaction Effects**

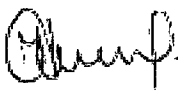
7. Are soft targets free from impact by nearby equipment or structures? Yes
8. Are overhead equipment, distribution systems, ceiling tiles and lighting, and masonry block walls not likely to collapse onto the equipment? Yes  
*Check ceiling tiles - OK - clipped per DWG 12-4070*
9. Do attached lines have adequate flexibility to avoid damage? Yes
10. Based on the above seismic interaction evaluations, is equipment free of potentially adverse seismic interaction effects? Yes

**Other Adverse Conditions**

11. Have you looked for and found no adverse seismic conditions that could adversely affect the safety functions of the equipment? Yes

**Comments**

Evaluated by:  George G Thomas Date: 10/18/12

 Neda Stoeva 10/18/12

**Photos**



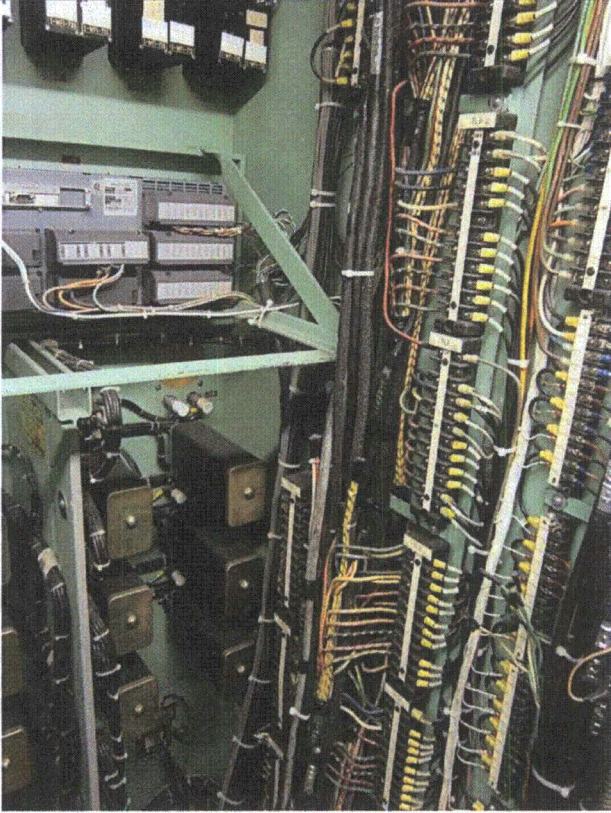
Status:  Y  N  U

**Seismic Walkdown Checklist (SWC)**

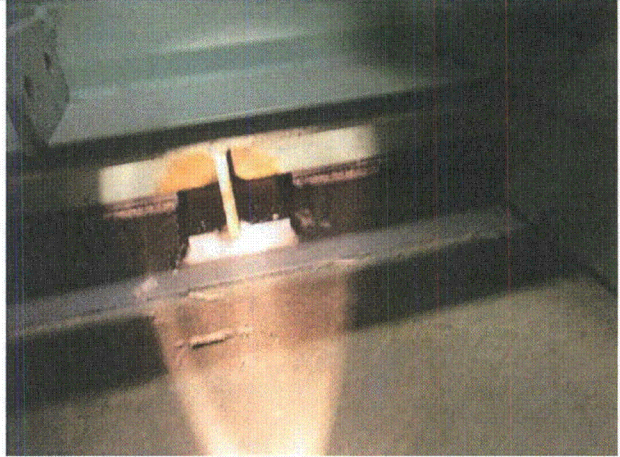
Equipment ID No.: 1-CCW

Equipment Class: (20) Instrumentation and Control Panels and Cabinets

Equipment Description: COMPONENT COOLING WATER CONTROL PANEL



P9191227



P9191228

Status:  Y  N  U

**Seismic Walkdown Checklist (SWC)**

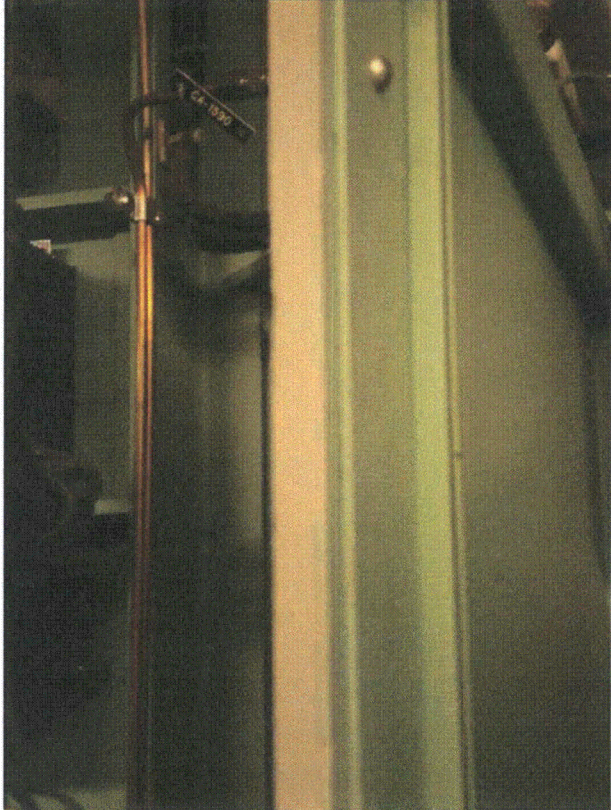
Equipment ID No.: 1-CCW

Equipment Class: (20) Instrumentation and Control Panels and Cabinets

Equipment Description: COMPONENT COOLING WATER CONTROL PANEL



P9191229



P9191230

Status:  Y  N  U

**Seismic Walkdown Checklist (SWC)**

Equipment ID No.: 1-CFI-420

Equipment Class: (18) Instruments on Racks

Equipment Description: COMPONENT COOLING WATER TO WEST COMPONENT COOLING

Project: DC Cook 1 SWEL

Location (Bldg, Elev,

Room/Area): AB2, 609.00 ft, 609

Manufacturer/Model: \_\_\_\_\_

**Instructions for Completing Checklist**

This checklist may be used to document the results of the Seismic Walkdown of an item of equipment on the SWEL. The space below each of the following questions may be used to record the results of judgments and findings. Additional space is provided at the end of this checklist for documenting other comments.

**Anchorage**

- |   |     |
|---|-----|
| 1. Is anchorage configuration verification required (i.e., is the item one of the 50% of SWEL items requiring such verification)?<br><i>VTD-ITBA-0131, Figure 6-1. Outline Dimensional Drawing 0224.0901.3 Model 224 DPU, Yoke or Wall Mounting</i> | Yes |
| 2. Is the anchorage free of bent, broken, missing or loose hardware?  | Yes |
| 3. Is the anchorage free of corrosion that is more than mild surface oxidation?   | Yes |
| 4. Is the anchorage free of visible cracks in the concrete near the anchors?<br><i>Mounted on rack with 4 bolts on the corners</i>  | Yes |
| 5. Is the anchorage configuration consistent with plant documentation?<br>(Note: This question only applies if the item is one of the 50% for which an anchorage configuration verification is required.)   | Yes |
| 6. Based on the above anchorage evaluations, is the anchorage free of potentially adverse seismic conditions?   | Yes |



Status:  Y  N  U

**Seismic Walkdown Checklist (SWC)**

Equipment ID No.: 1-CFI-420

Equipment Class: (18) Instruments on Racks

Equipment Description: COMPONENT COOLING WATER TO WEST COMPONENT COOLING

**Interaction Effects**

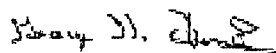
7. Are soft targets free from impact by nearby equipment or structures? Yes
8. Are overhead equipment, distribution systems, ceiling tiles and lighting, and masonry block walls not likely to collapse onto the equipment? Yes
9. Do attached lines have adequate flexibility to avoid damage? Yes
10. Based on the above seismic interaction evaluations, is equipment free of potentially adverse seismic interaction effects? Yes

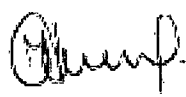
**Other Adverse Conditions**

11. Have you looked for and found no adverse seismic conditions that could adversely affect the safety functions of the equipment? Yes

**Comments**

Fire piping well supported, joints welded.

Evaluated by:  George G Thomas Date: 08/15/2013

 Neda Stoeva 08/15/2013

**Photos**

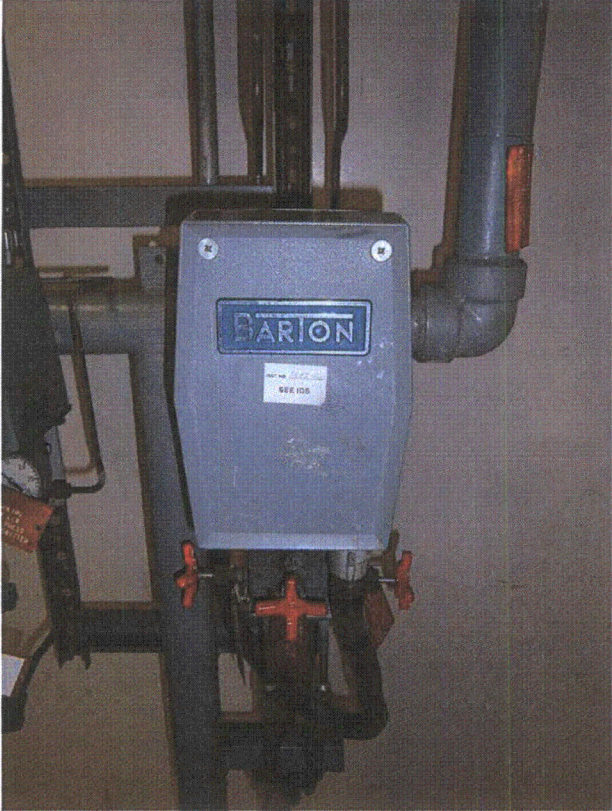
Status:  Y  N  U

**Seismic Walkdown Checklist (SWC)**

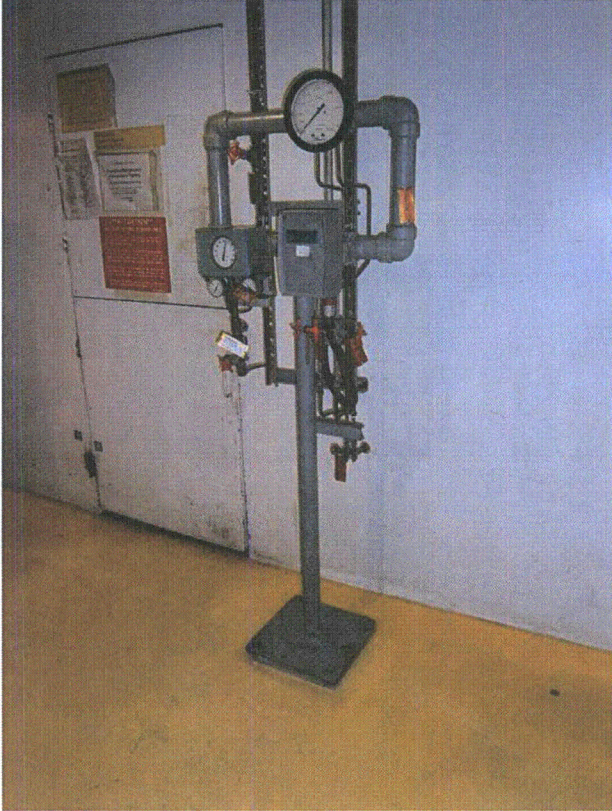
Equipment ID No.: 1-CFI-420

Equipment Class: (18) Instruments on Racks

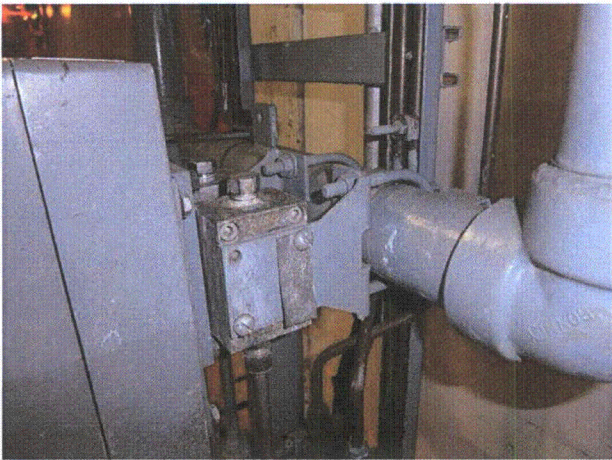
Equipment Description: COMPONENT COOLING WATER TO WEST COMPONENT COOLING



P9100003



P9100004



P9100005



P9100006

Status:  Y  N  U

**Seismic Walkdown Checklist (SWC)**

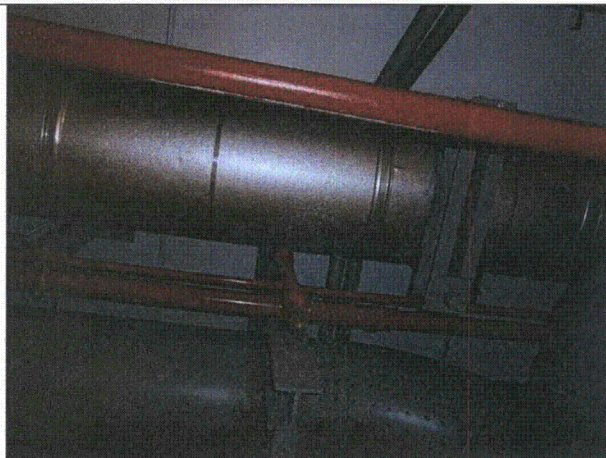
Equipment ID No.: 1-CFI-420

Equipment Class: (18) Instruments on Racks

Equipment Description: COMPONENT COOLING WATER TO WEST COMPONENT COOLING



P9100007



P9100008

Status:  Y  N  U

**Seismic Walkdown Checklist (SWC)**

Equipment ID No.: 1-CFI-429

Equipment Class: (18) Instruments on Racks

Equipment Description: WEST RHR HEAT EXCHANGER HE-17W COMPONENT COOLING

Project: DC Cook 1 SWEL

Location (Bldg, Elev,

Room/Area): AB1, 633.00 ft, 633

Manufacturer/Model: \_\_\_\_\_

**Instructions for Completing Checklist**

This checklist may be used to document the results of the Seismic Walkdown of an item of equipment on the SWEL. The space below each of the following questions may be used to record the results of judgments and findings. Additional space is provided at the end of this checklist for documenting other comments.

**Anchorage**

- |   |                |
|---|----------------|
| 1. Is anchorage configuration verification required (i.e., is the item one of the 50% of SWEL items requiring such verification)?   | No             |
| 2. Is the anchorage free of bent, broken, missing or loose hardware?  | Yes            |
| 3. Is the anchorage free of corrosion that is more than mild surface oxidation?   | Yes            |
| 4. Is the anchorage free of visible cracks in the concrete near the anchors?  | Yes            |
| 5. Is the anchorage configuration consistent with plant documentation?<br>(Note: This question only applies if the item is one of the 50% for which an anchorage configuration verification is required.) | Not Applicable |
| 6. Based on the above anchorage evaluations, is the anchorage free of potentially adverse seismic conditions?   | Yes            |

Status:  Y  N  U

**Seismic Walkdown Checklist (SWC)**

Equipment ID No.: 1-CFI-429

Equipment Class: (18) Instruments on Racks

Equipment Description: WEST RHR HEAT EXCHANGER HE-17W COMPONENT COOLING

**Interaction Effects**

7. Are soft targets free from impact by nearby equipment or structures? Yes
8. Are overhead equipment, distribution systems, ceiling tiles and lighting, and masonry block walls not likely to collapse onto the equipment? Yes
9. Do attached lines have adequate flexibility to avoid damage? Yes
10. Based on the above seismic interaction evaluations, is equipment free of potentially adverse seismic interaction effects? Yes

**Other Adverse Conditions**

11. Have you looked for and found no adverse seismic conditions that could adversely affect the safety functions of the equipment? Yes

**Comments**

Evaluated by: George G Thomas Date: 10/18/12  
Neda Stoeva 10/18/12

**Photos**



Status:  Y  N  U

**Seismic Walkdown Checklist (SWC)**

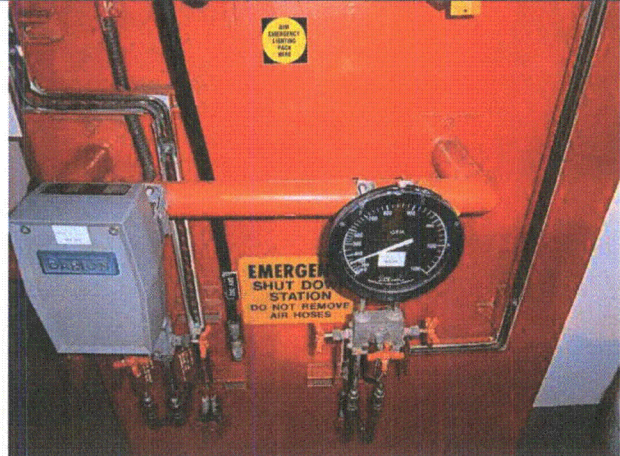
Equipment ID No.: 1-CFI-429

Equipment Class: (18) Instruments on Racks

Equipment Description: WEST RHR HEAT EXCHANGER HE-17W COMPONENT COOLING



P9100120



P9100121

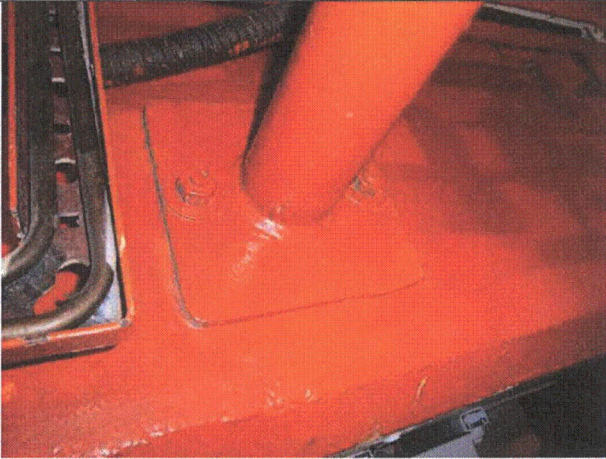
Status:  Y  N  U

**Seismic Walkdown Checklist (SWC)**

Equipment ID No.: 1-CFI-429

Equipment Class: (18) Instruments on Racks

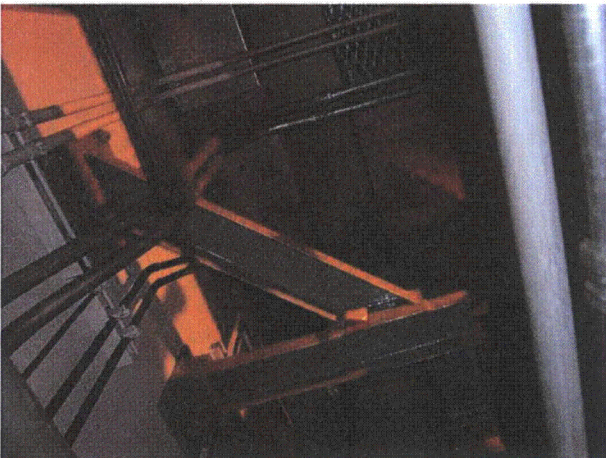
Equipment Description: WEST RHR HEAT EXCHANGER HE-17W COMPONENT COOLING



P9100122



P9100123



P9100124