

F2-72

Sheet 1 of 84  
 Status: Y  N  U

**Seismic Walkdown Checklist (SWC)**

Equipment ID No. Q2P16P001C Equip. Class<sup>1</sup> 6

Equipment Description SERVICE WATER PUMP 2C

Location: Bldg. SWIS Floor El. 188 Room, Area 72A

Manufacturer, Model, Etc. (optional but recommended) \_\_\_\_\_

**Instructions for Completing Checklist**

This checklist may be used to document the results of the Seismic Walkdown of an item of equipment on the SWEL. The space below each of the following questions may be used to record the results of judgments and findings. Additional space is provided at the end of this checklist for documenting other comments.

**Anchorage**

1. Is the anchorage configuration verification required (i.e., is the item one of the 50% of SWEL items requiring such verification)? Y  N
  
2. Is the anchorage free of bent, broken, missing or loose hardware? Y  N  U  N/A
  
3. Is the anchorage free of corrosion that is more than mild surface oxidation? Y  N  U  N/A
  
4. Is the anchorage free of visible cracks in the concrete near the anchors? Y  N  U  N/A
  
5. Is the anchorage configuration consistent with plant documentation? Y  N  U  N/A   
 (Note: This question only applies if the item is one of the 50% for which an anchorage configuration verification is required.)  
 Ref. dwg U-6112.71, Ver. 1
  
6. Based on the above anchorage evaluations, is the anchorage free of potentially adverse seismic conditions? Y  N  U

<sup>1</sup> Enter the equipment class name from Appendix B: Classes of Equipment.

F272

Sheet 2 of 84  
Status: Y  N  U

**Seismic Walkdown Checklist (SWC)**

Equipment ID No. Q2P16P001C Equip. Class' 6

Equipment Description SERVICE WATER PUMP 2C

Interaction Effects

7. Are soft targets free from impact by nearby equipment or structures? Y  N  U  N/A

8. Are overhead equipment, distribution systems, ceiling tiles and lighting, and masonry block walls not likely to collapse onto the equipment? Y  N  U  N/A

9. Do attached lines have adequate flexibility to avoid damage? Y  N  U  N/A

10. Based on the above seismic interaction evaluations, is equipment free of potentially adverse seismic interaction effects? Y  N  U

Other Adverse Conditions

11. Have you looked for and found no other seismic conditions that could adversely affect the safety functions of the equipment? Y  N  U

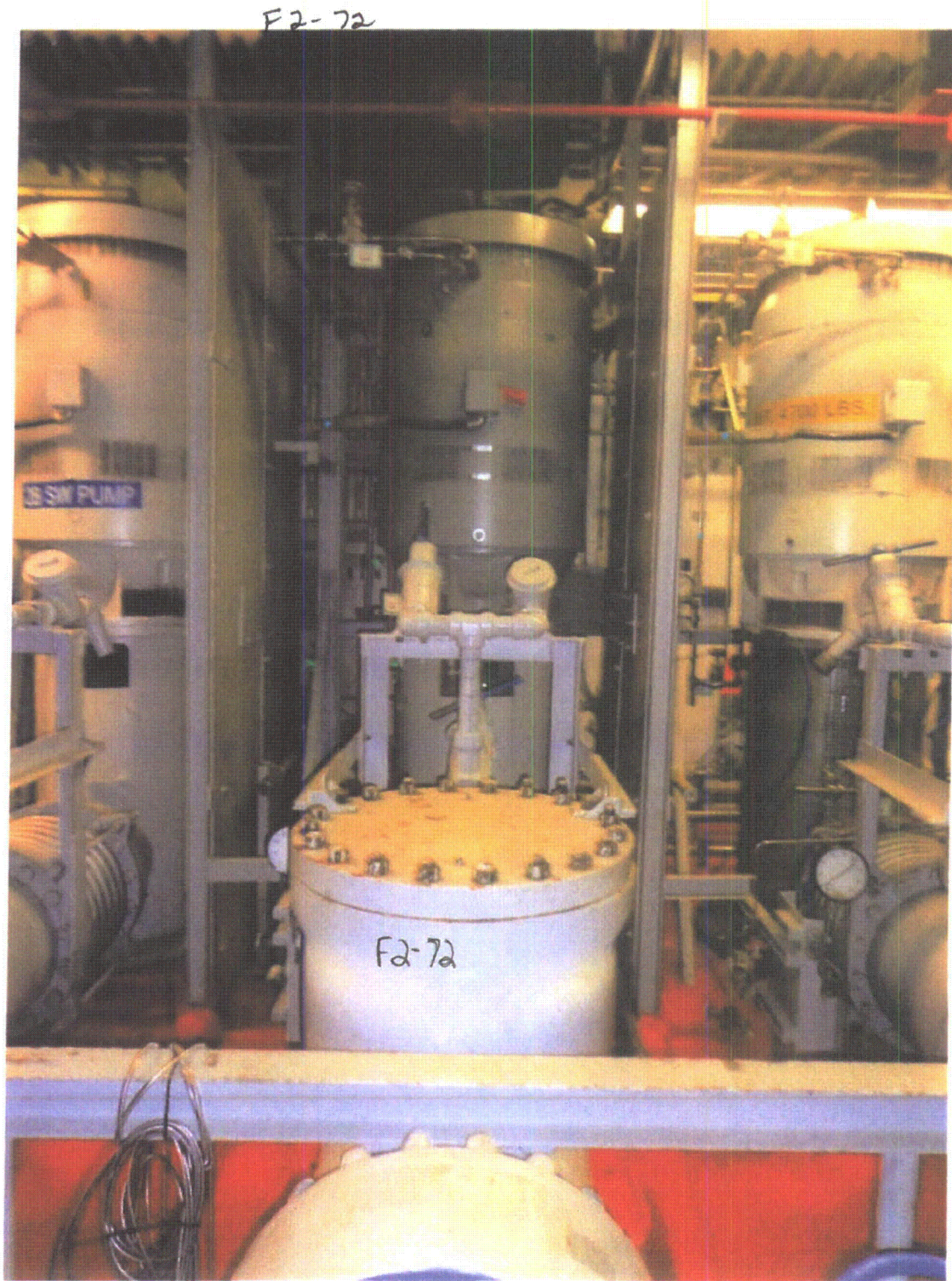
Comments (Additional pages may be added as necessary)

Area walk-by is in folder F1-119.

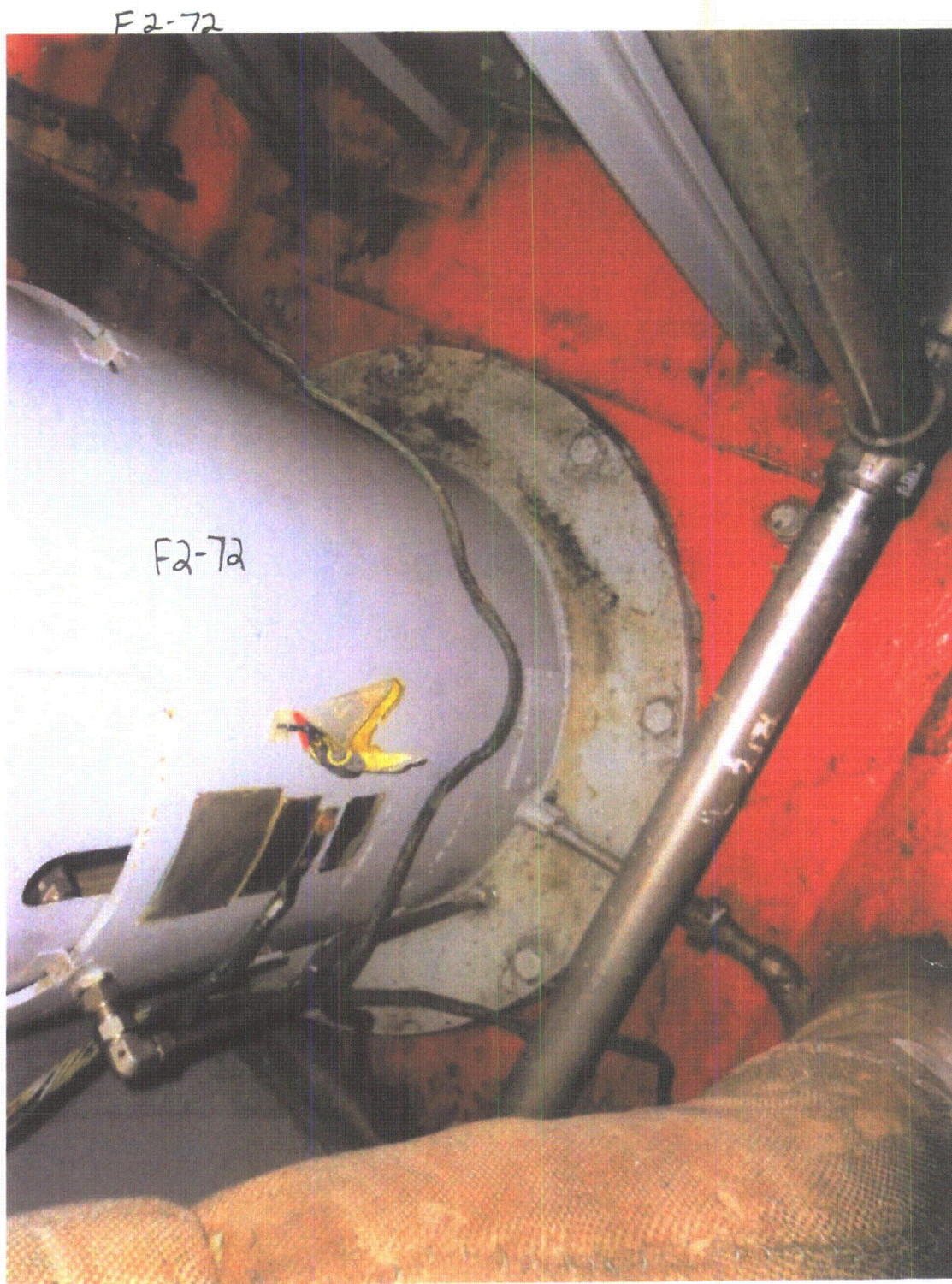
Evaluated by: Laura MacLay Laura MacLay Date: 9/11/12

Terry A. Hillenix TERRY A. HILLENIX 9/11/2012









F-2-73

Sheet 1 of 34

Status: Y  N  U

**Seismic Walkdown Checklist (SWC)**

Equipment ID No. Q2P16V514 Equip. Class<sup>1</sup> 8

Equipment Description SW TO TURBINE BLDG ISOLATION VALVE

Location: Bldg. YARD Floor El. 155 Room, Area 2VB-1B

Manufacturer, Model, Etc. (optional but recommended) \_\_\_\_\_

**Instructions for Completing Checklist**

This checklist may be used to document the results of the Seismic Walkdown of an item of equipment on the SWEL. The space below each of the following questions may be used to record the results of judgments and findings. Additional space is provided at the end of this checklist for documenting other comments.

**Anchorage**

1. Is the anchorage configuration verification required (i.e., is the item one of the 50% of SWEL items requiring such verification)? Y  N
  
2. Is the anchorage free of bent, broken, missing or loose hardware? Y  N  U  N/A   
*U-line valve*
  
3. Is the anchorage free of corrosion that is more than mild surface oxidation? Y  N  U  N/A
  
4. Is the anchorage free of visible cracks in the concrete near the anchors? Y  N  U  N/A
  
5. Is the anchorage configuration consistent with plant documentation? (Note: This question only applies if the item is one of the 50% for which an anchorage configuration verification is required.) Y  N  U  N/A
  
6. Based on the above anchorage evaluations, is the anchorage free of potentially adverse seismic conditions? Y  N  U

<sup>1</sup> Enter the equipment class name from Appendix B: Classes of Equipment.

F2-73

Sheet 2 of 84

Status: Y  N  U

**Seismic Walkdown Checklist (SWC)**

Equipment ID No. Q2P16V514 Equip. Class: 8

Equipment Description SW TO TURBINE BLDG ISOLATION VALVE

**Interaction Effects**

7. Are soft targets free from impact by nearby equipment or structures? Y  N  U  N/A

8. Are overhead equipment, distribution systems, ceiling tiles and lighting, and masonry block walls not likely to collapse onto the equipment? Y  N  U  N/A

9. Do attached lines have adequate flexibility to avoid damage? Y  N  U  N/A

10. Based on the above seismic interaction evaluations, is equipment free of potentially adverse seismic interaction effects? Y  N  U

**Other Adverse Conditions**

11. Have you looked for and found no other seismic conditions that could adversely affect the safety functions of the equipment? Y  N  U

**Comments** (Additional pages may be added as necessary)

Evaluated by: Laura MacLay Date: 9/11/12

TERRY A KULLER 9/11/2012

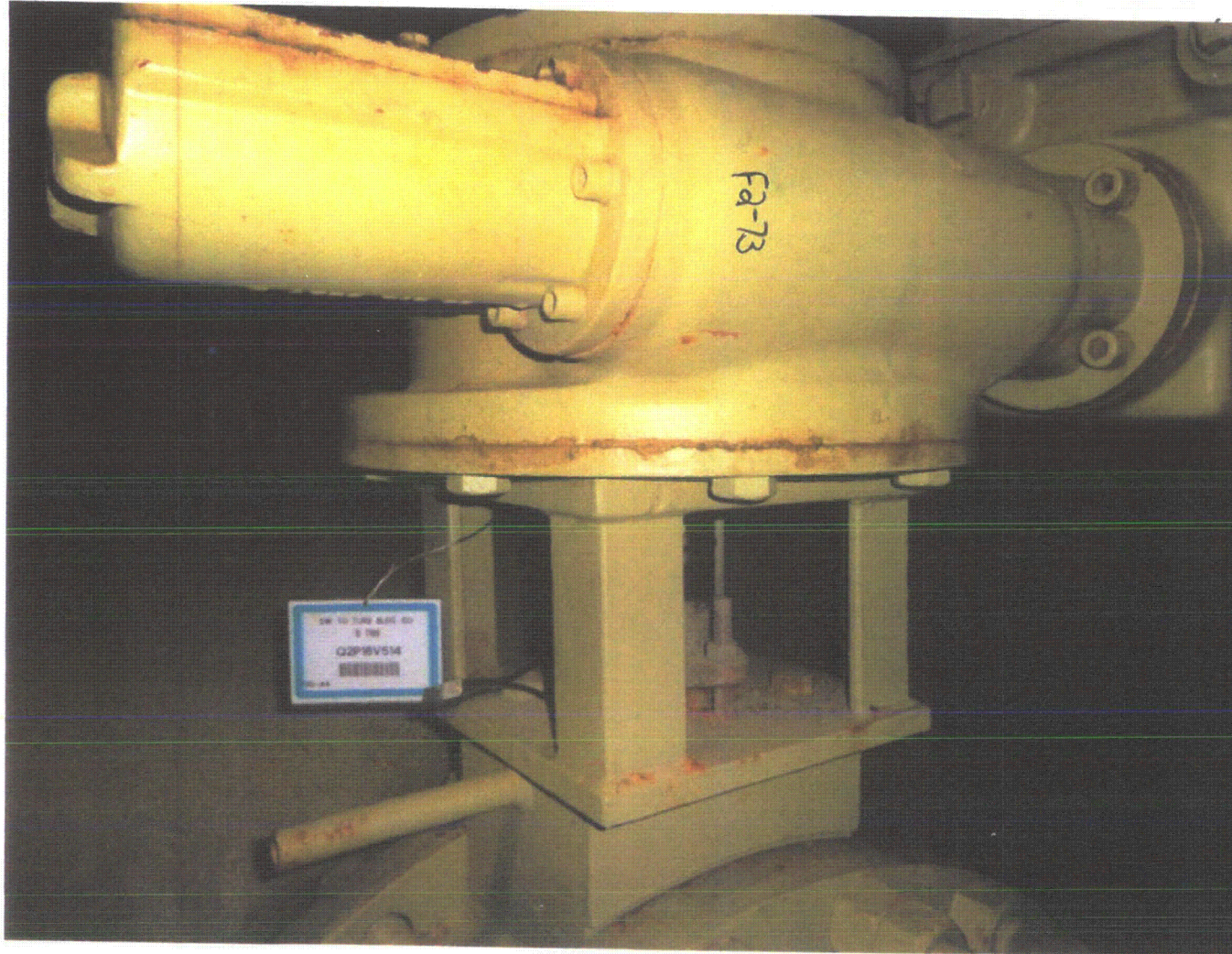




F2-73

F2-73





F2-74

Sheet 1 of 84  
 Status: Y  N  U

**Seismic Walkdown Checklist (SWC)**

Equipment ID No. Q2P16V516 Equip. Class<sup>1</sup> 8

Equipment Description SW TO TURBINE BLDG TRAIN A ISOLATION

Location: Bldg. YARD Floor El. 155 Room, Area ZVB-1B

Manufacturer, Model, Etc. (optional but recommended) \_\_\_\_\_

**Instructions for Completing Checklist**

This checklist may be used to document the results of the Seismic Walkdown of an item of equipment on the SWEL. The space below each of the following questions may be used to record the results of judgments and findings. Additional space is provided at the end of this checklist for documenting other comments.

**Anchorage**

1. Is the anchorage configuration verification required (i.e., is the item one of the 50% of SWEL items requiring such verification)? Y  N
  
2. Is the anchorage free of bent, broken, missing or loose hardware? Y  N  U  N/A   
*Inline component*
  
3. Is the anchorage free of corrosion that is more than mild surface oxidation? Y  N  U  N/A
  
4. Is the anchorage free of visible cracks in the concrete near the anchors? Y  N  U  N/A
  
5. Is the anchorage configuration consistent with plant documentation? Y  N  U  N/A   
 (Note: This question only applies if the item is one of the 50% for which an anchorage configuration verification is required.)
  
6. Based on the above anchorage evaluations, is the anchorage free of potentially adverse seismic conditions? Y  N  U

<sup>1</sup> Enter the equipment class name from Appendix B: Classes of Equipment.

F2-74

Sheet 2 of 84  
Status: Y  N  U

**Seismic Walkdown Checklist (SWC)**

Equipment ID No. Q2P16V516 Equip. Class: 8

Equipment Description SW TO TURBINE BLDG TRAIN A ISOLATION

**Interaction Effects**

7. Are soft targets free from impact by nearby equipment or structures? Y  N  U  N/A

8. Are overhead equipment, distribution systems, ceiling tiles and lighting, and masonry block walls not likely to collapse onto the equipment? Y  N  U  N/A

9. Do attached lines have adequate flexibility to avoid damage? Y  N  U  N/A

10. Based on the above seismic interaction evaluations, is equipment free of potentially adverse seismic interaction effects? Y  N  U

**Other Adverse Conditions**

11. Have you looked for and found no other seismic conditions that could adversely affect the safety functions of the equipment? Y  N  U

**Comments** (Additional pages may be added as necessary)

Area walk-by is in folder F2-73, equipment Q2P16V514.

Evaluated by: Laura Maclay Date: 9/11/12

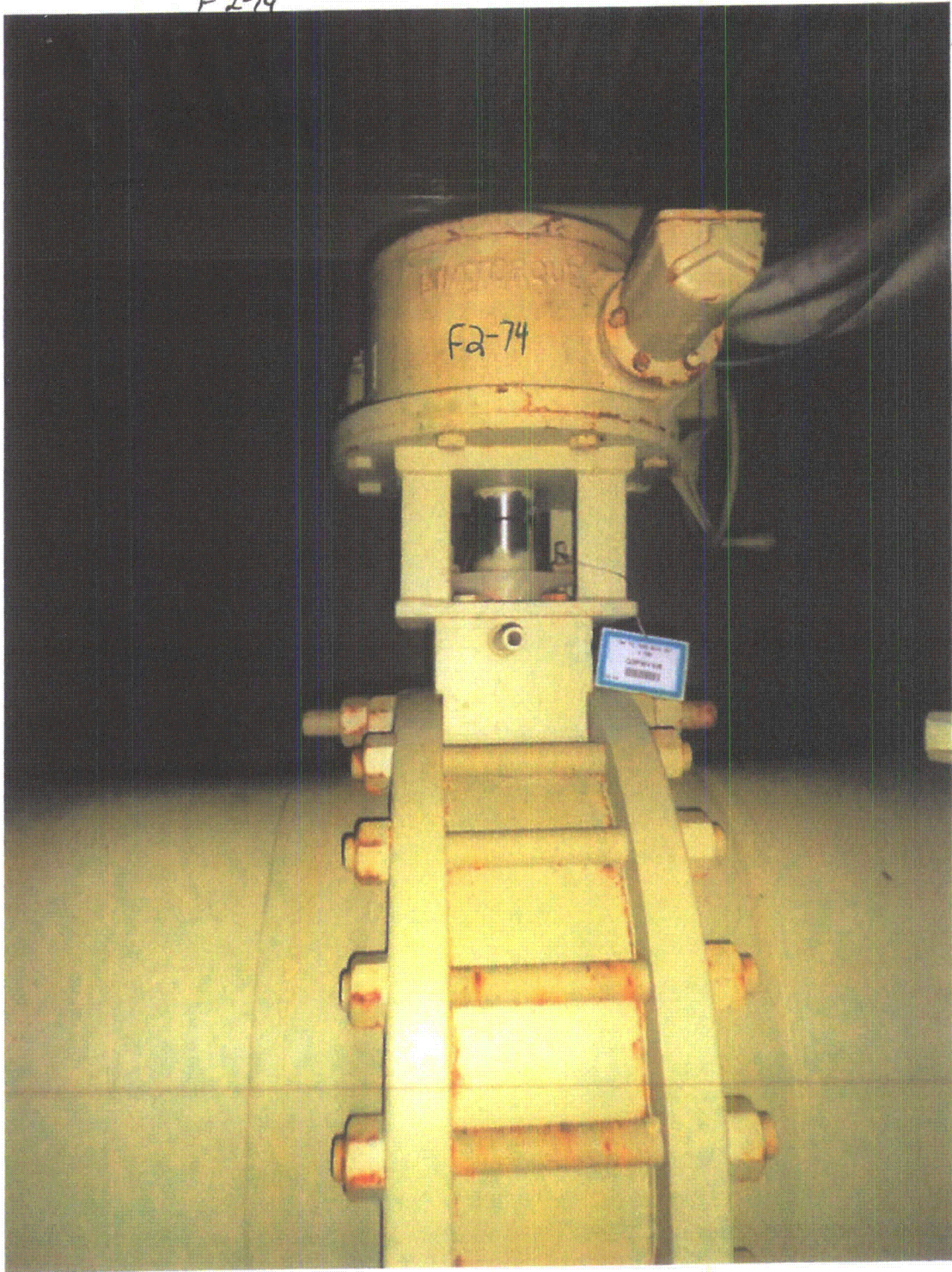
TERRY A. MILLERIX 9/11/2012







F2-74



F2-10

F2-75

Sheet 1 of 3

Status:  Y  N  U

**Seismic Walkdown Checklist (SWC)**

Equipment ID No. Q2P16V539 Equip. Class<sup>1</sup> 8

Equipment Description SW EMERGENCY RECIRCULATION TO POND

Location: Bldg. YARD Floor El. 155 Room, Area Valve Box 2VB-2A

Manufacturer, Model, Etc. (optional but recommended) \_\_\_\_\_

**Instructions for Completing Checklist**

This checklist may be used to document the results of the Seismic Walkdown of an item of equipment on the SWEL. The space below each of the following questions may be used to record the results of judgments and findings. Additional space is provided at the end of this checklist for documenting other comments.

**Anchorage**

1. Is the anchorage configuration verification required (i.e., is the item one of the 50% of SWEL items requiring such verification)?  Y  N  
*Inline component, no anchorage.*
2. Is the anchorage free of bent, broken, missing or loose hardware?  Y  N  U  N/A
3. Is the anchorage free of corrosion that is more than mild surface oxidation?  Y  N  U  N/A
4. Is the anchorage free of visible cracks in the concrete near the anchors?  Y  N  U  N/A
5. Is the anchorage configuration consistent with plant documentation? (Note: This question only applies if the item is one of the 50% for which an anchorage configuration verification is required.)  Y  N  U  N/A
6. Based on the above anchorage evaluations, is the anchorage free of potentially adverse seismic conditions?  Y  N  U

<sup>1</sup> Enter the equipment class name from Appendix B: Classes of Equipment.

F2-75

Sheet 2 of 3

Status:  Y  N  U

**Seismic Walkdown Checklist (SWC)**

Equipment ID No. Q2P16V539 Equip. Class' 8

Equipment Description SW EMERGENCY RECIRCULATION TO POND

Interaction Effects

- 7. Are soft targets free from impact by nearby equipment or structures?  Y  N  U  N/A
- 8. Are overhead equipment, distribution systems, ceiling tiles and lighting, and masonry block walls not likely to collapse onto the equipment?  Y  N  U  N/A
- 9. Do attached lines have adequate flexibility to avoid damage?  Y  N  U  N/A
- 10. Based on the above seismic interaction evaluations, is equipment free of potentially adverse seismic interaction effects?  Y  N  U

Other Adverse Conditions

- 11. Have you looked for and found no other seismic conditions that could adversely affect the safety functions of the equipment?  Y  N  U

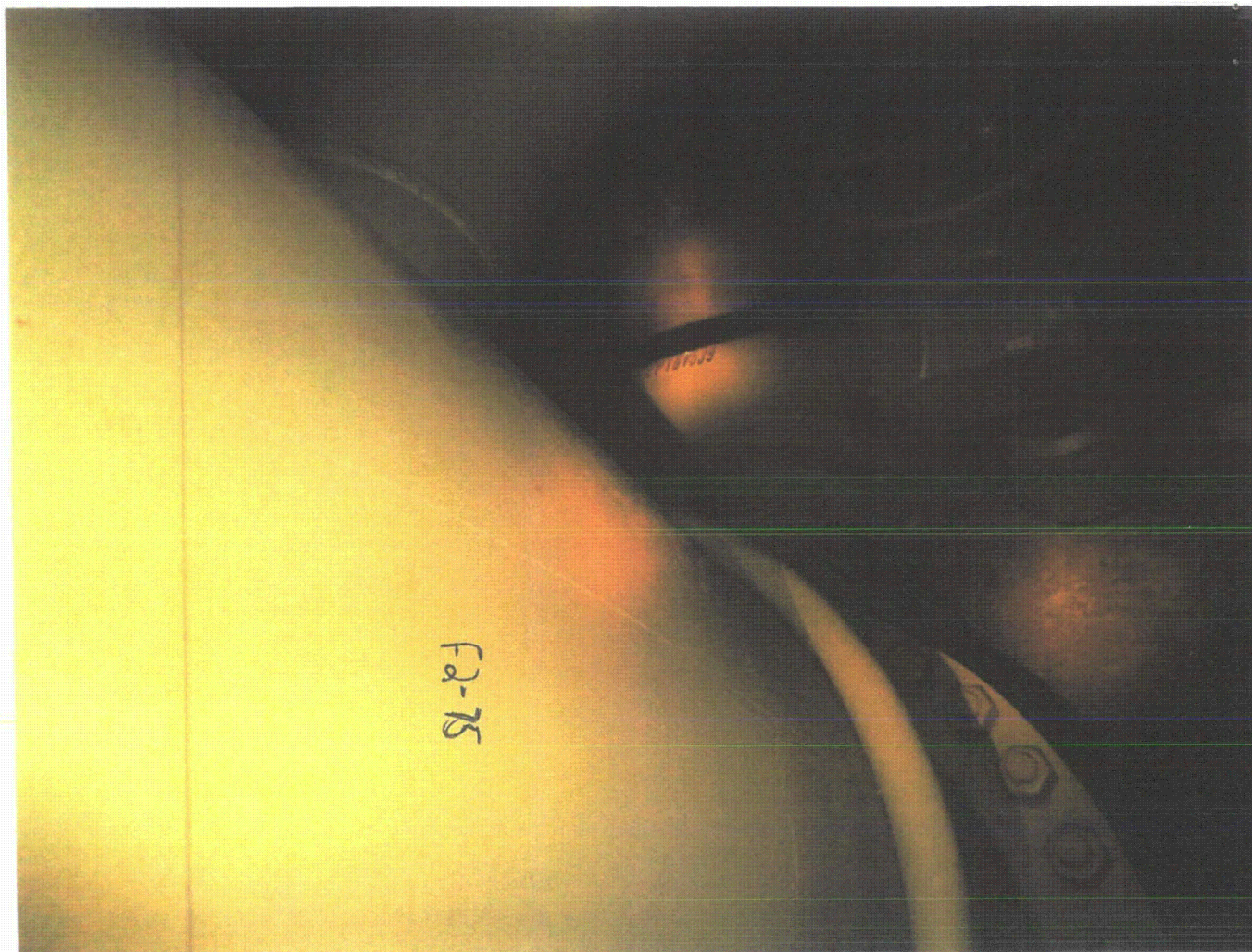
Comments (Additional pages may be added as necessary)

~~Area walkby form for Value Box 2A is with equipment Q2P16V563.~~  
UN 8-27-12

Evaluated by: Laura Maclay Laura Maclay Date: 8-27-12

Jerry A. Mullenix TERRY A. MULLENIX 8/27/2012





F2-76

Sheet 1 of 3  
 Status:  Y  N  U

**Seismic Walkdown Checklist (SWC)**

Equipment ID No. Q2P16V546 Equip. Class<sup>1</sup> 8

Equipment Description SW DISCHARGE FROM AUXILIARY BUILDING

Location: Bldg. YARD Floor El. 155 Room, Area Valve Box 2VB-3A

Manufacturer, Model, Etc. (optional but recommended) \_\_\_\_\_

**Instructions for Completing Checklist**

This checklist may be used to document the results of the Seismic Walkdown of an item of equipment on the SWEL. The space below each of the following questions may be used to record the results of judgments and findings. Additional space is provided at the end of this checklist for documenting other comments.

**Anchorage**

1. Is the anchorage configuration verification required (i.e., is the item one of the 50% of SWEL items requiring such verification)?  Y  N  
*No anchorage, in-line component.*
  
2. Is the anchorage free of bent, broken, missing or loose hardware?  Y  N  U  N/A
  
3. Is the anchorage free of corrosion that is more than mild surface oxidation?  Y  N  U  N/A
  
4. Is the anchorage free of visible cracks in the concrete near the anchors?  Y  N  U  N/A
  
5. Is the anchorage configuration consistent with plant documentation? (Note: This question only applies if the item is one of the 50% for which an anchorage configuration verification is required.)  Y  N  U  N/A
  
6. Based on the above anchorage evaluations, is the anchorage free of potentially adverse seismic conditions?  Y  N  U

<sup>1</sup> Enter the equipment class name from Appendix B: Classes of Equipment.

F276

Sheet 2 of 3

Status:  Y  N  U

**Seismic Walkdown Checklist (SWC)**

Equipment ID No. Q2P16V546 Equip. Class 8

Equipment Description SW DISCHARGE FROM AUXILIARY BUILDING

**Interaction Effects**

- 7. Are soft targets free from impact by nearby equipment or structures?  Y  N  U  N/A
- 8. Are overhead equipment, distribution systems, ceiling tiles and lighting, and masonry block walls not likely to collapse onto the equipment?  Y  N  U  N/A
- 9. Do attached lines have adequate flexibility to avoid damage?  Y  N  U  N/A
- 10. Based on the above seismic interaction evaluations, is equipment free of potentially adverse seismic interaction effects?  Y  N  U

**Other Adverse Conditions**

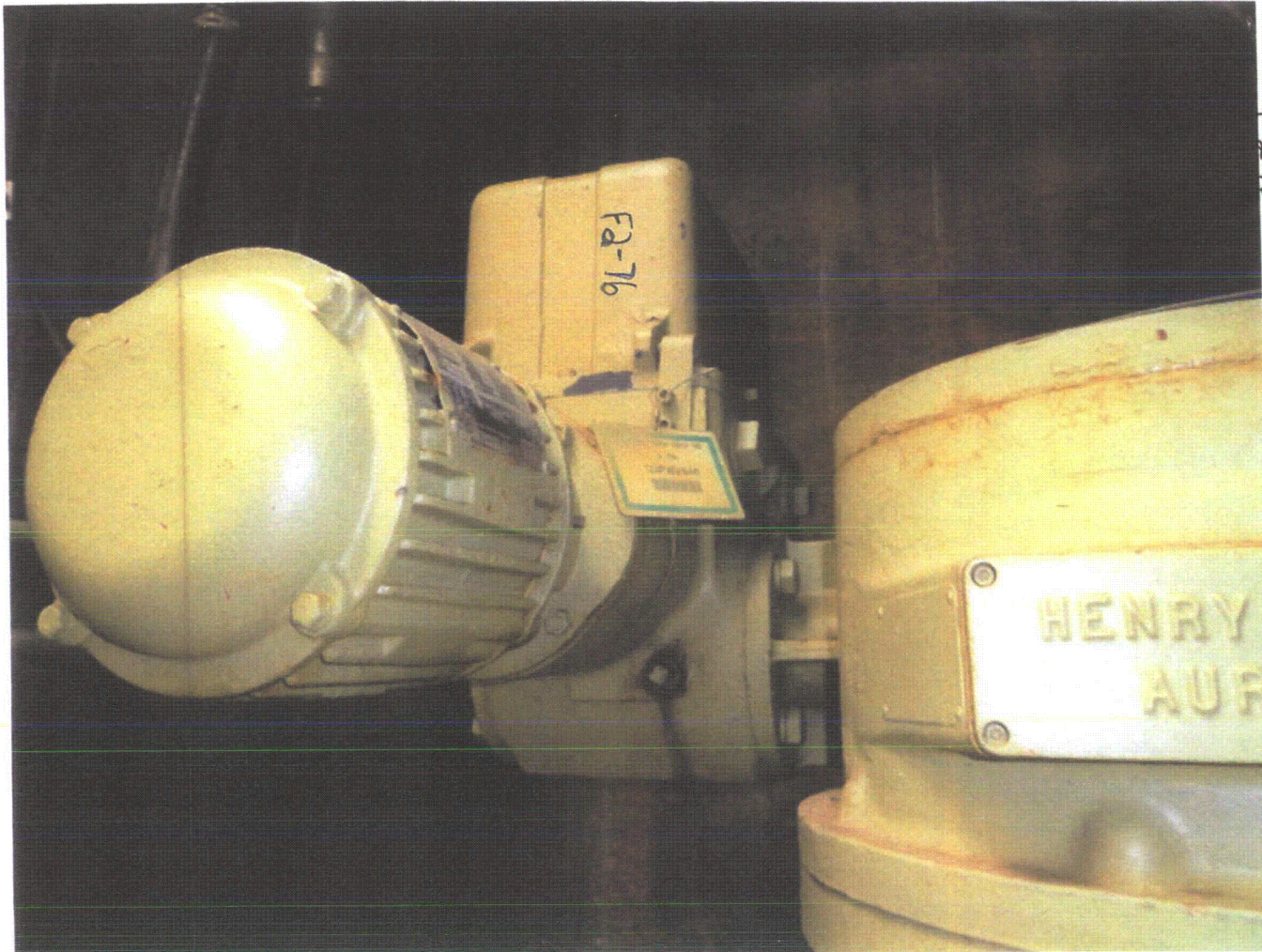
- 11. Have you looked for and found no other seismic conditions that could adversely affect the safety functions of the equipment?  Y  N  U

**Comments** (Additional pages may be added as necessary)

Evaluated by: Laura MacLay Laura MacLay Date: 8-27-12

Terry A. Mullenix TERRY A. MULLENIX 8/27/2012





F2-76



FL-17

Sheet 1 of 4  
 Status: Y  N  U

**Seismic Walkdown Checklist (SWC)**

Equipment ID No. Q2P16V563 Equip. Class<sup>1</sup> 7

Equipment Description A TRN DIL BYP PCV

Location: Bldg. YARD Floor El. 155 Room, Area Valve Box ZA

Manufacturer, Model, Etc. (optional but recommended) \_\_\_\_\_

**Instructions for Completing Checklist**

This checklist may be used to document the results of the Seismic Walkdown of an item of equipment on the SWEL. The space below each of the following questions may be used to record the results of judgments and findings. Additional space is provided at the end of this checklist for documenting other comments.

**Anchorage**

1. Is the anchorage configuration verification required (i.e., is the item one of the 50% of SWEL items requiring such verification)? Y  N    
 In line component, no anchorage.
2. Is the anchorage free of bent, broken, missing or loose hardware? Y  N  U  N/A
3. Is the anchorage free of corrosion that is more than mild surface oxidation? Y  N  U  N/A
4. Is the anchorage free of visible cracks in the concrete near the anchors? Y  N  U  N/A
5. Is the anchorage configuration consistent with plant documentation? (Note: This question only applies if the item is one of the 50% for which an anchorage configuration verification is required.) Y  N  U  N/A
6. Based on the above anchorage evaluations, is the anchorage free of potentially adverse seismic conditions? Y  N  U

<sup>1</sup> Enter the equipment class name from Appendix B: Classes of Equipment.

F2-77

Sheet 2 of 34

Status:  Y  N  U

**Seismic Walkdown Checklist (SWC)**

Equipment ID No. Q2P16V563 Equip. Class 7

Equipment Description A TRN DIL BYP PCV

**Interaction Effects**

7. Are soft targets free from impact by nearby equipment or structures?  Y  N  U  N/A

8. Are overhead equipment, distribution systems, ceiling tiles and lighting, and masonry block walls not likely to collapse onto the equipment?  Y  N  U  N/A

9. Do attached lines have adequate flexibility to avoid damage?  Y  N  U  N/A

10. Based on the above seismic interaction evaluations, is equipment free of potentially adverse seismic interaction effects?  Y  N  U

**Other Adverse Conditions**

11. Have you looked for and found no other seismic conditions that could adversely affect the safety functions of the equipment?  Y  N  U

**Comments** (Additional pages may be added as necessary)

Area walkby for valve box 2VB-2A is with equipment # Q2 P16V539.

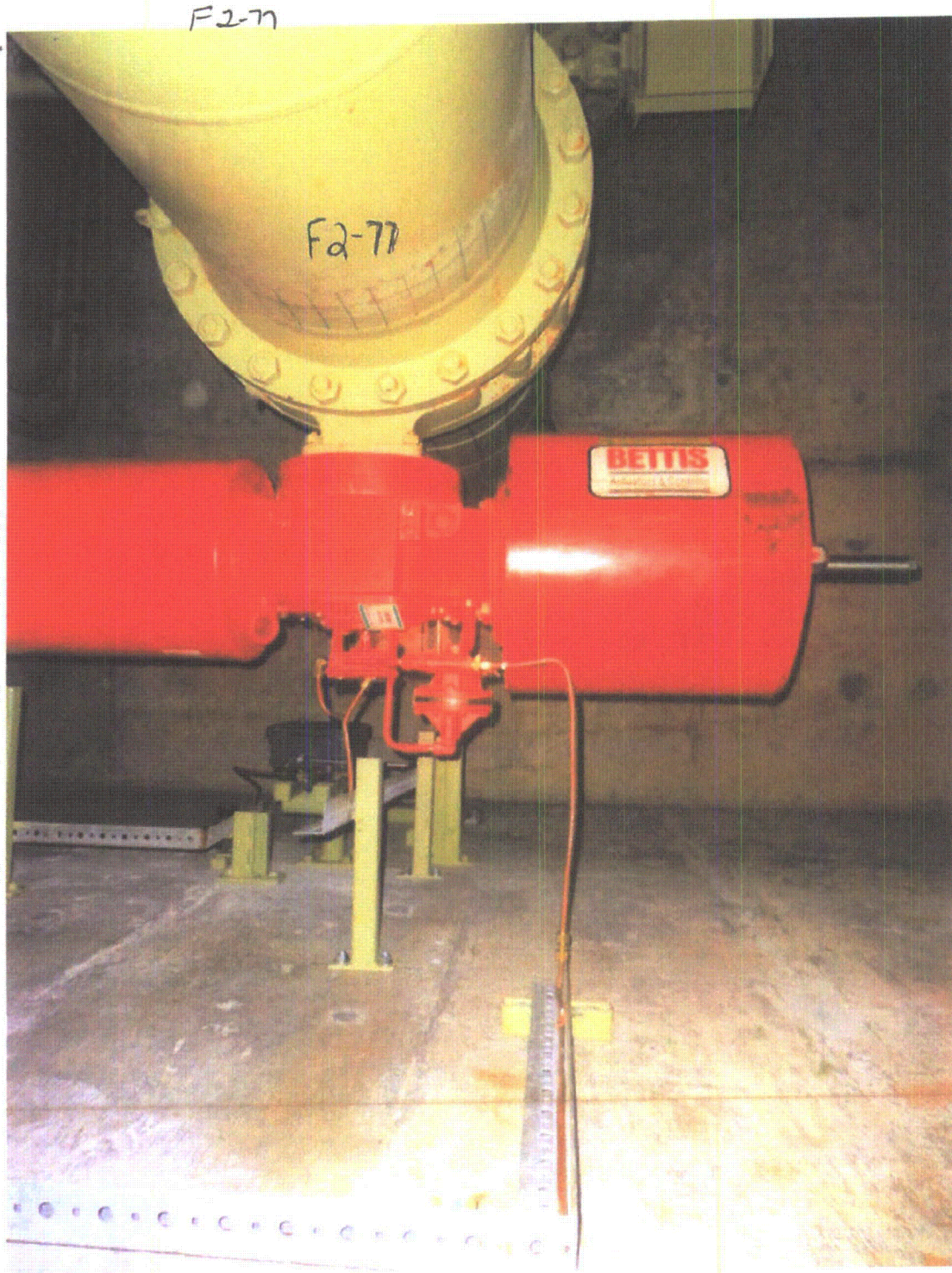
Evaluated by: Laura Maday Laura Maday Date: 8-27-12

Terry A. Muller TERRY A. MULLENIX 8/27/2012



F2-77





F2-7B

Sheet 1 of 4

Status: Y  N  U

**Seismic Walkdown Checklist (SWC)**

Equipment ID No. Q2P16V578 Equip. Class<sup>1</sup> 7

Equipment Description 2C PUMP MIN FLOW

Location: Bldg. SWIS Floor El. 188 Room, Area 72A

Manufacturer, Model, Etc. (optional but recommended) \_\_\_\_\_

**Instructions for Completing Checklist**

This checklist may be used to document the results of the Seismic Walkdown of an item of equipment on the SWEL. The space below each of the following questions may be used to record the results of judgments and findings. Additional space is provided at the end of this checklist for documenting other comments.

**Anchorage**

1. Is the anchorage configuration verification required (i.e., is the item one of the 50% of SWEL items requiring such verification)? *LM 2/30*  
Y  N   
*Inline valve, no anchorage*
  
2. Is the anchorage free of bent, broken, missing or loose hardware? Y  N  U  N/A
  
3. Is the anchorage free of corrosion that is more than mild surface oxidation? Y  N  U  N/A
  
4. Is the anchorage free of visible cracks in the concrete near the anchors? Y  N  U  N/A
  
5. Is the anchorage configuration consistent with plant documentation? Y  N  U  N/A   
(Note: This question only applies if the item is one of the 50% for which an anchorage configuration verification is required.)
  
6. Based on the above anchorage evaluations, is the anchorage free of potentially adverse seismic conditions? Y  N  U

<sup>1</sup> Enter the equipment class name from Appendix B: Classes of Equipment.

F278

Sheet 2 of 84  
 Status: Y  N  U

**Seismic Walkdown Checklist (SWC)**

Equipment ID No. Q2P16V578 Equip. Class' 7

Equipment Description 2C PUMP MIN FLOW

**Interaction Effects**

7. Are soft targets free from impact by nearby equipment or structures? Y  N  U  N/A

8. Are overhead equipment, distribution systems, ceiling tiles and lighting, and masonry block walls not likely to collapse onto the equipment? Y  N  U  N/A

9. Do attached lines have adequate flexibility to avoid damage? Y  N  U  N/A

10. Based on the above seismic interaction evaluations, is equipment free of potentially adverse seismic interaction effects? Y  N  U

**Other Adverse Conditions**

11. Have you looked for and found no other seismic conditions that could adversely affect the safety functions of the equipment? Y  N  U

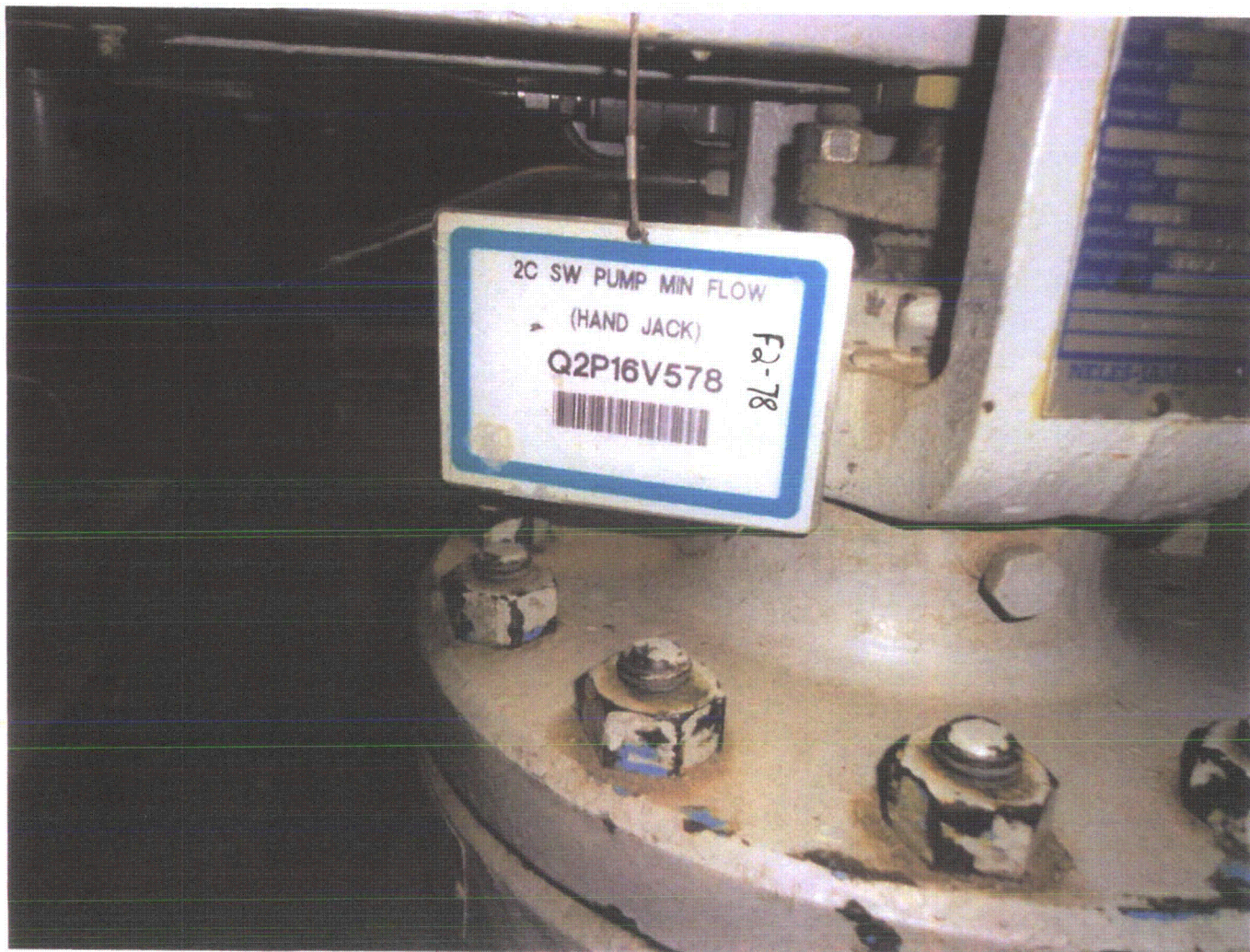
**Comments** (Additional pages may be added as necessary)

Area walk-by is in folder F1-119, Equipment Q5W41C513D.

Evaluated by: Laura MacLay Laura MacLay Date: 8/30/12

Terry A. Mullenix TERRY A. MULLENIX 8/30/2012

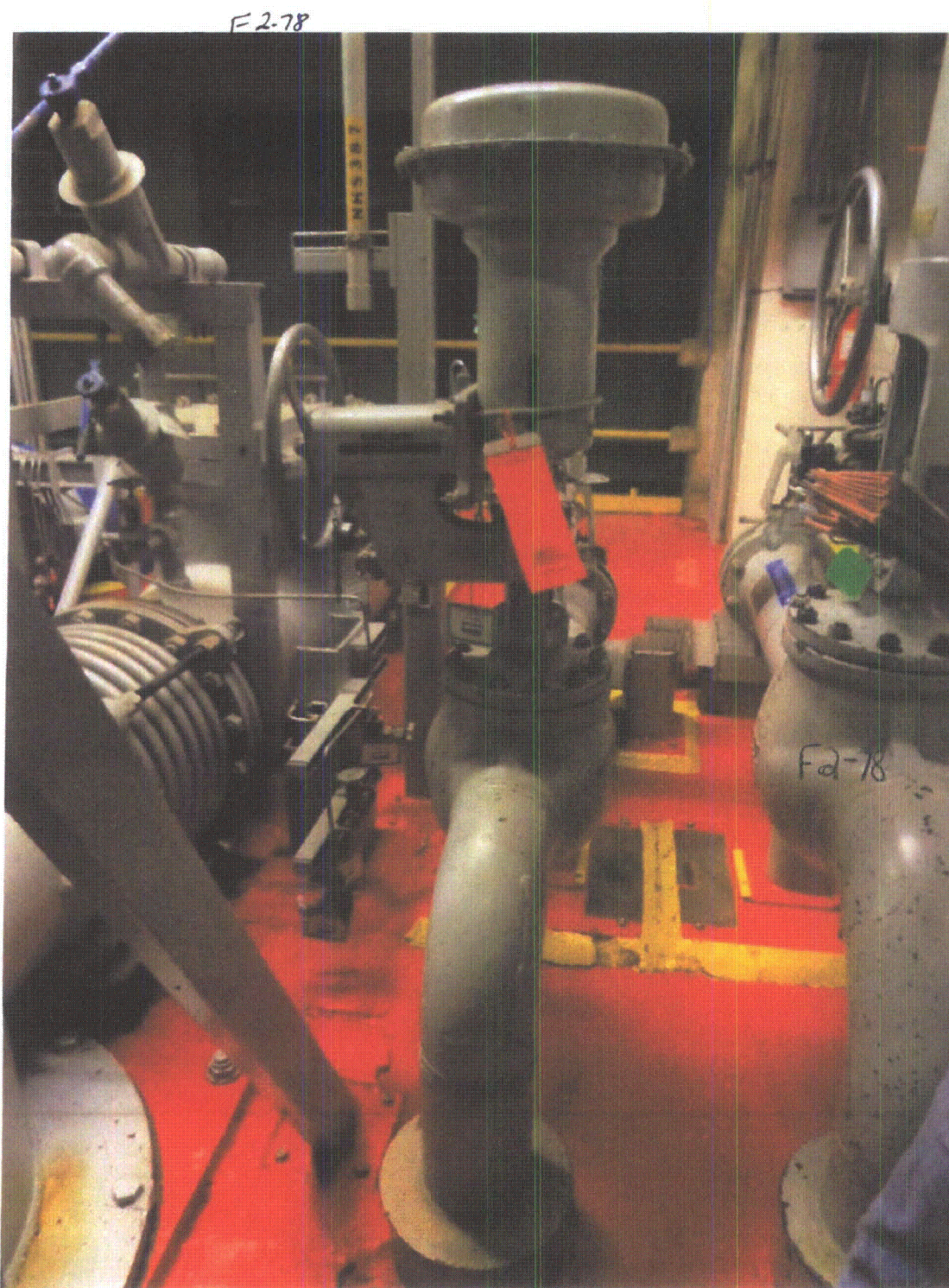




F2-78

3/2







8/1-19

Sheet 1 of 3

Status: Y  N  U

**Seismic Walkdown Checklist (SWC)**

Equipment ID No. Q2P17H001B Equip. Class<sup>1</sup> 21

Equipment Description SWING CCW HEAT EXCHANGER

Location: Bldg. AUXILIARY Floor El. 100 Room. Area 2185

Manufacturer, Model, Etc. (optional but recommended) \_\_\_\_\_

**Instructions for Completing Checklist**

This checklist may be used to document the results of the Seismic Walkdown of an item of equipment on the SWEL. The space below each of the following questions may be used to record the results of judgments and findings. Additional space is provided at the end of this checklist for documenting other comments.

**Anchorage**

1. Is the anchorage configuration verification required (i.e., is the item one of the 50% of SWEL items requiring such verification)? Y  N   
*Drawing D206597 Rev. 6*
  
2. Is the anchorage free of bent, broken, missing or loose hardware? Y  N  U  N/A
  
3. Is the anchorage free of corrosion that is more than mild surface oxidation? Y  N  U  N/A
  
4. Is the anchorage free of visible cracks in the concrete near the anchors? Y  N  U  N/A
  
5. Is the anchorage configuration consistent with plant documentation? Y  N  U  N/A   
 (Note: This question only applies if the item is one of the 50% for which an anchorage configuration verification is required.)
  
6. Based on the above anchorage evaluations, is the anchorage free of potentially adverse seismic conditions? Y  N  U

<sup>1</sup> Enter the equipment class name from Appendix B: Classes of Equipment.

F279

Sheet 2 of 3

Status:  Y  N  U

**Seismic Walkdown Checklist (SWC)**

Equipment ID No. Q2P17H001B Equip. Class<sup>1</sup> 21

Equipment Description SWING CCW HEAT EXCHANGER

**Interaction Effects**

- 7. Are soft targets free from impact by nearby equipment or structures?  Y  N  U  N/A  
*A cable tray has <1" of clearance from the top of the CCW end cap (see picture), however both the cable tray and HX are adequately restrained against vertical displacement. There is nozzle equipment at the other end of the HX that is close to overhead piping but judged OK since gap >2"*
- 8. Are overhead equipment, distribution systems, ceiling tiles and lighting, and masonry block walls not likely to collapse onto the equipment?  Y  N  U  N/A
- 9. Do attached lines have adequate flexibility to avoid damage?  Y  N  U  N/A
- 10. Based on the above seismic interaction evaluations, is equipment free of potentially adverse seismic interaction effects?  Y  N  U

**Other Adverse Conditions**

- 11. Have you looked for and found no other seismic conditions that could adversely affect the safety functions of the equipment?  Y  N  U

**Comments** (Additional pages may be added as necessary)

Evaluated by: TEARF A. MUMFORD / [Signature] Date: 8/24/2012  
Laura Mackay / Laura Mackay 8/24/12



F2-80

Sheet 1 of 3

Status:  Y  N  U



**Seismic Walkdown Checklist (SWC)**

Equipment ID No. Q2P17HV3045 Equip. Class<sup>1</sup> 7

Equipment Description CCW RETURN FROM RCP THERMAL BARRIER ISOLATION

*All complete*

Location: Bldg. AUXILIARY Floor El. 121 Room, Area 2223

Manufacturer, Model, Etc. (optional but recommended) \_\_\_\_\_

**Instructions for Completing Checklist**

This checklist may be used to document the results of the Seismic Walkdown of an item of equipment on the SWEL. The space below each of the following questions may be used to record the results of judgments and findings. Additional space is provided at the end of this checklist for documenting other comments.

**Anchorage**

1. Is the anchorage configuration verification required (i.e., is the item one of the 50% of SWEL items requiring such verification)?  Y  N  U  
*in-line valve, no anchorage*
2. Is the anchorage free of bent, broken, missing or loose hardware?  Y  N  U  N/A
3. Is the anchorage free of corrosion that is more than mild surface oxidation?  Y  N  U  N/A
4. Is the anchorage free of visible cracks in the concrete near the anchors?  Y  N  U  N/A
5. Is the anchorage configuration consistent with plant documentation?  Y  N  U  N/A  
(Note: This question only applies if the item is one of the 50% for which an anchorage configuration verification is required.)
6. Based on the above anchorage evaluations, is the anchorage free of potentially adverse seismic conditions?  Y  N  U

<sup>1</sup> Enter the equipment class name from Appendix B: Classes of Equipment.

F2-80

Sheet 2 of 3

Status: Y  N  U

**Seismic Walkdown Checklist (SWC)**

Equipment ID No. Q2P17HV3045 Equip. Class: 7

Equipment Description CCW RETURN FROM RCP THERMAL BARRIER ISOLATION

**Interaction Effects**

7. Are soft targets free from impact by nearby equipment or structures? Y  N  U  N/A

8. Are overhead equipment, distribution systems, ceiling tiles and lighting, and masonry block walls not likely to collapse onto the equipment? Y  N  U  N/A

9. Do attached lines have adequate flexibility to avoid damage? Y  N  U  N/A

10. Based on the above seismic interaction evaluations, is equipment free of potentially adverse seismic interaction effects? Y  N  U

**Other Adverse Conditions**

11. Have you looked for and found no other seismic conditions that could adversely affect the safety functions of the equipment? Y  N  U

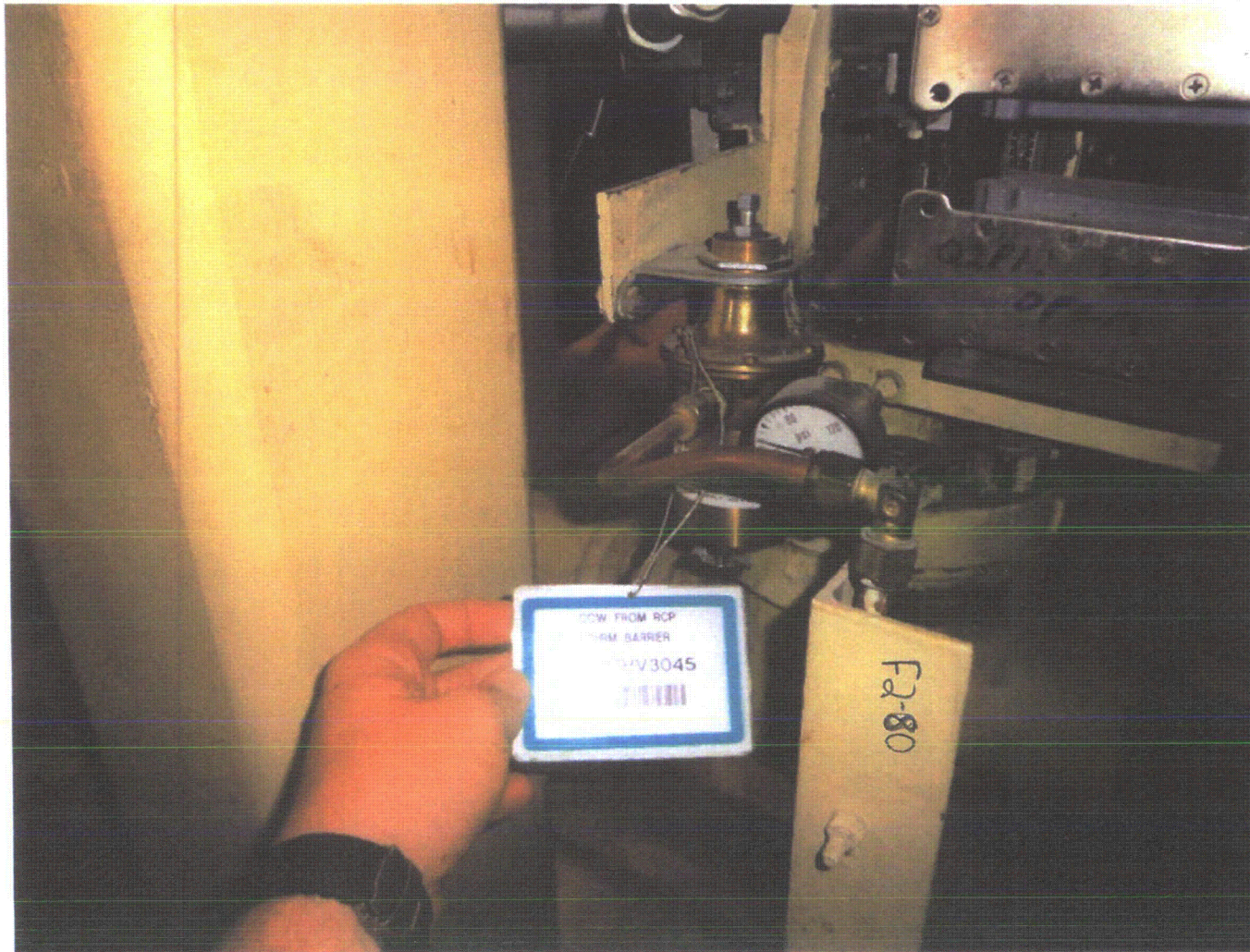
**Comments** (Additional pages may be added as necessary)

Area walkdown for Room 2223 is with equipment Q2E11 MOVBBBBB.

Evaluated by: Laura Maclay Laura Maclay Date: 8/28/12

Terry A. Mullenix TERRY A. MULLENIX 8/28/2012





F2-80

F2-80

9

Sheet 1 of 4

Status: Y  N  U **Seismic Walkdown Checklist (SWC)**Equipment ID No. Q2P17HV3095 Equip. Class<sup>1</sup> 7Equipment Description CCW SUPPLY TO EXCESS LETDOWN HEAT EXCHANGERLocation: Bldg. AUXILIARY Floor El. 121' Room, Area 2223 (PEN 45)

Manufacturer, Model, Etc. (optional but recommended) \_\_\_\_\_

**Instructions for Completing Checklist**

This checklist may be used to document the results of the Seismic Walkdown of an item of equipment on the SWEL. The space below each of the following questions may be used to record the results of judgments and findings. Additional space is provided at the end of this checklist for documenting other comments.

**Anchorage**

1. Is the anchorage configuration verification required (i.e., is the item one of the 50% of SWEL items requiring such verification)? Y  N
  
2. Is the anchorage free of bent, broken, missing or loose hardware?  
*IN-LINE COMPONENT* Y  N  U  N/A
  
3. Is the anchorage free of corrosion that is more than mild surface oxidation? Y  N  U  N/A
  
4. Is the anchorage free of visible cracks in the concrete near the anchors? Y  N  U  N/A
  
5. Is the anchorage configuration consistent with plant documentation?  
(Note: This question only applies if the item is one of the 50% for which an anchorage configuration verification is required.)  
*IN-LINE COMPONENT* Y  N  U  N/A
  
6. Based on the above anchorage evaluations, is the anchorage free of potentially adverse seismic conditions? Y  N  U

---

<sup>1</sup> Enter the equipment class name from Appendix B: Classes of Equipment.

Status: Y N U

**Seismic Walkdown Checklist (SWC)**

Equipment ID No. Q2P17HV3095 Equip. Class<sup>1</sup> 7

Equipment Description CCW SUPPLY TO EXCESS LETDOWN HEAT EXCHANGER

**Interaction Effects**

7. Are soft targets free from impact by nearby equipment or structures? Y N U N/A

8. Are overhead equipment, distribution systems, ceiling tiles and lighting, and masonry block walls not likely to collapse onto the equipment? Y N U N/A

9. Do attached lines have adequate flexibility to avoid damage? Y N U N/A

10. Based on the above seismic interaction evaluations, is equipment free of potentially adverse seismic interaction effects? Y N U

**Other Adverse Conditions**

11. Have you looked for and found no other seismic conditions that could adversely affect the safety functions of the equipment? Y N U  
*Close (1" away) to 1-1/2" anchored/supported line. Mass is so small that if any interaction occurred, it is no seismic concern to the valve, OKAY*

**Comments** (Additional pages may be added as necessary)

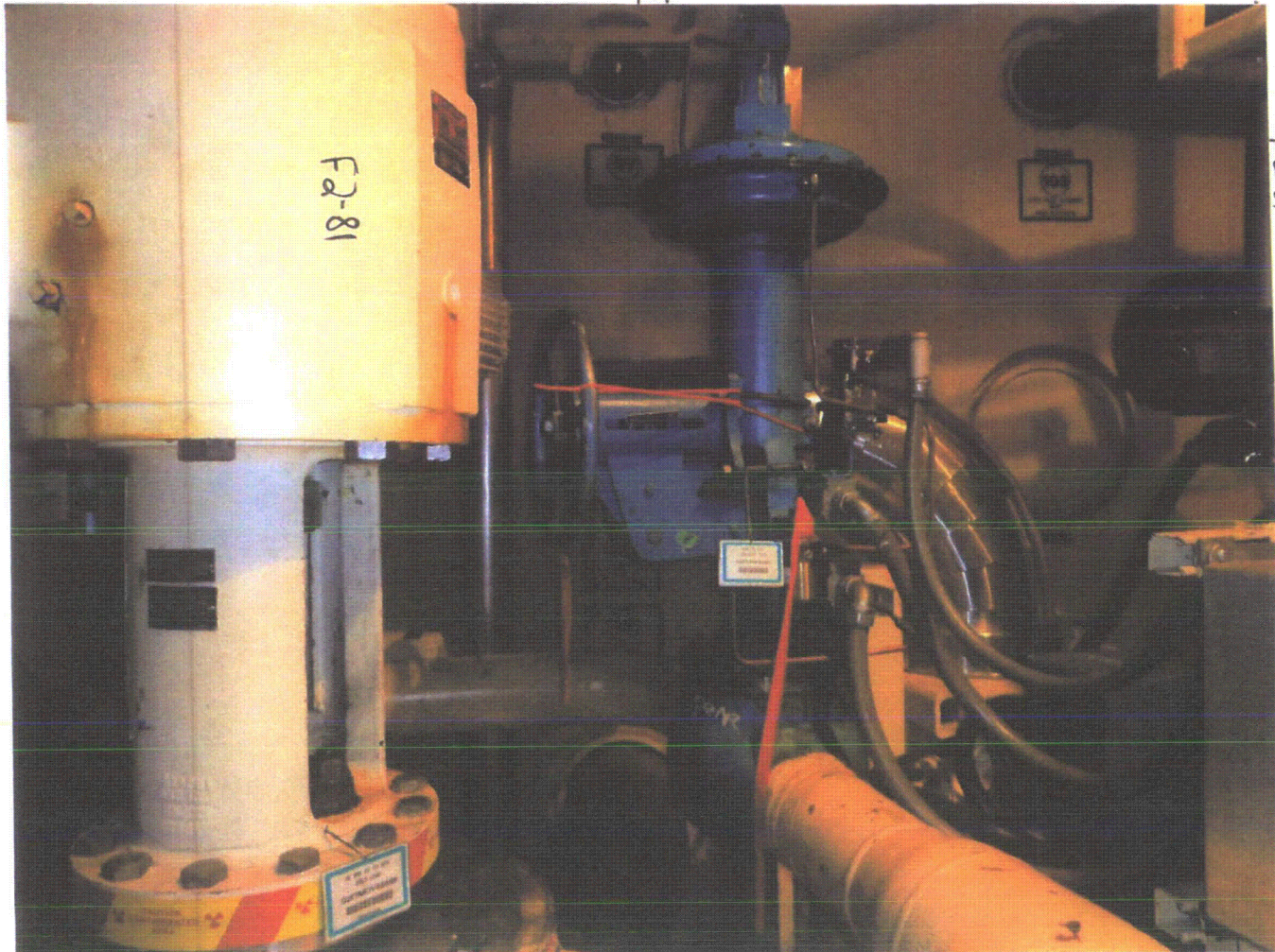
*None*

*See F2-15 for AWC (Q2E11MOV8888B)*

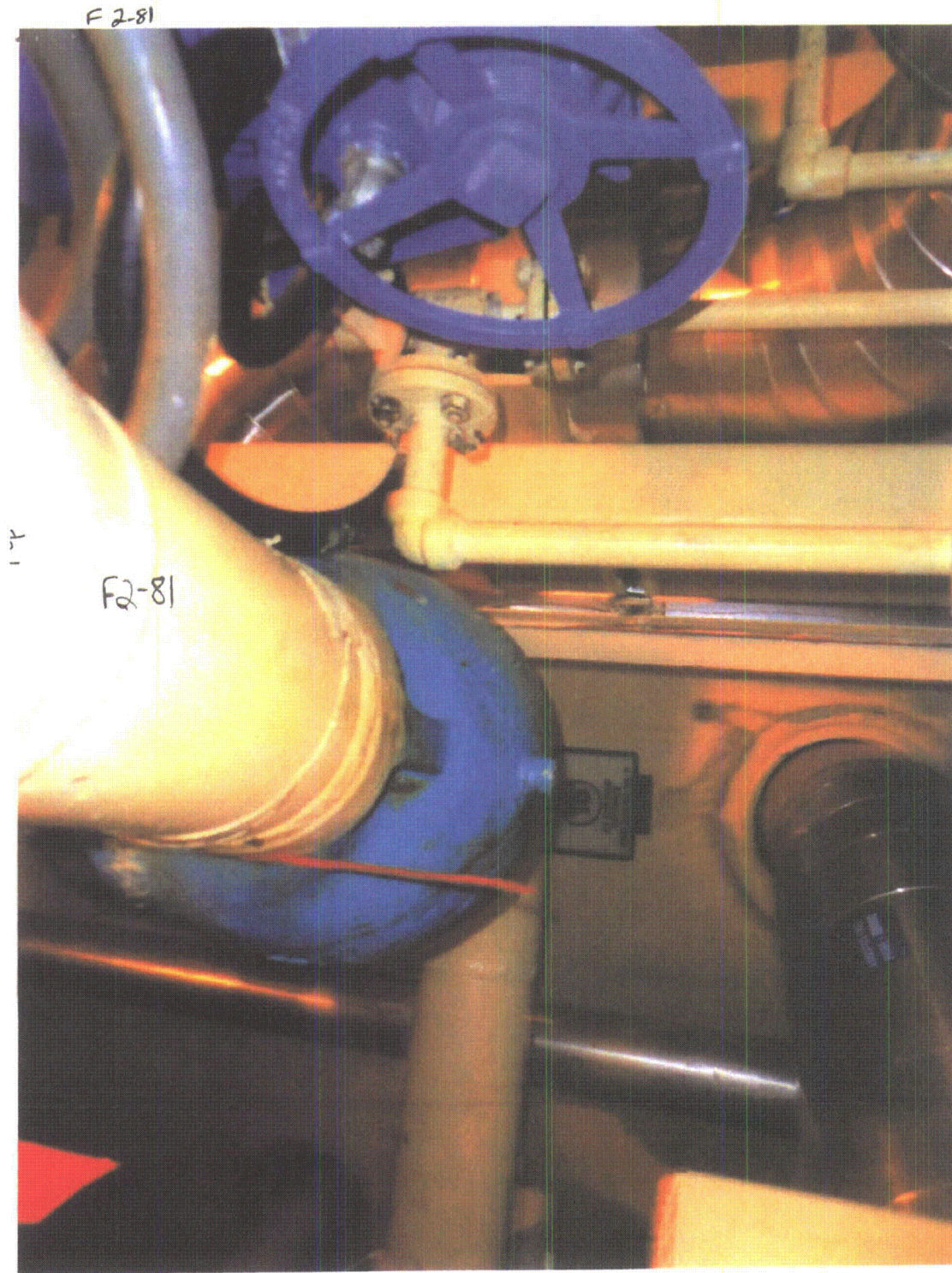
*\*Walkdown was performed on 9/10/2012. Form was retyped and resigned on date reflected below for clarity. Comments section has also been updated to reference the correct Area Walk-by for the associated location.*

Evaluated by: Scott Walden *Scott Walden* Date: 08.08.2013  
Ryan Harlos *R Harlos* 08/08/2013









F2-82

Sheet 1 of 4  
 Status: Y  N  U

**Seismic Walkdown Checklist (SWC)**

Equipment ID No. Q2P17HV3096B Equip. Class<sup>1</sup> 7

Equipment Description CCW NON-SAFETY ISOLATION

Location: Bldg. AUXILIARY Floor El. 100 Room, Area 2161

Manufacturer, Model, Etc. (optional but recommended) \_\_\_\_\_

**Instructions for Completing Checklist**

This checklist may be used to document the results of the Seismic Walkdown of an item of equipment on the SWEL. The space below each of the following questions may be used to record the results of judgments and findings. Additional space is provided at the end of this checklist for documenting other comments.

**Anchorage**

1. Is the anchorage configuration verification required (i.e., is the item one of the 50% of SWEL items requiring such verification)? Y  N  U   
*In-line component, no anchorage.*
  
2. Is the anchorage free of bent, broken, missing or loose hardware? Y  N  U  N/A
  
3. Is the anchorage free of corrosion that is more than mild surface oxidation? Y  N  U  N/A
  
4. Is the anchorage free of visible cracks in the concrete near the anchors? Y  N  U  N/A
  
5. Is the anchorage configuration consistent with plant documentation? Y  N  U  N/A   
 (Note: This question only applies if the item is one of the 50% for which an anchorage configuration verification is required.)
  
6. Based on the above anchorage evaluations, is the anchorage free of potentially adverse seismic conditions? Y  N  U   
*X*

*YES TAM 8-22-12*  
*YES TAM 8-22-12*

<sup>1</sup> Enter the equipment class name from Appendix B: Classes of Equipment.

F282

Sheet 2 of 4  
Status: Y  N  U

**Seismic Walkdown Checklist (SWC)**

Equipment ID No. Q2P17HV3096B Equip. Class 7

Equipment Description CCW NON-SAFETY ISOLATION

Interaction Effects

7. Are soft targets free from impact by nearby equipment or structures? Y  N  U  N/A

8. Are overhead equipment, distribution systems, ceiling tiles and lighting, and masonry block walls not likely to collapse onto the equipment? Y  N  U  N/A

9. Do attached lines have adequate flexibility to avoid damage? Y  N  U  N/A

10. Based on the above seismic interaction evaluations, is equipment free of potentially adverse seismic interaction effects? Y  N  U

Other Adverse Conditions

11. Have you looked for and found no other seismic conditions that could adversely affect the safety functions of the equipment? Y  N  U

Comments (Additional pages may be added as necessary)

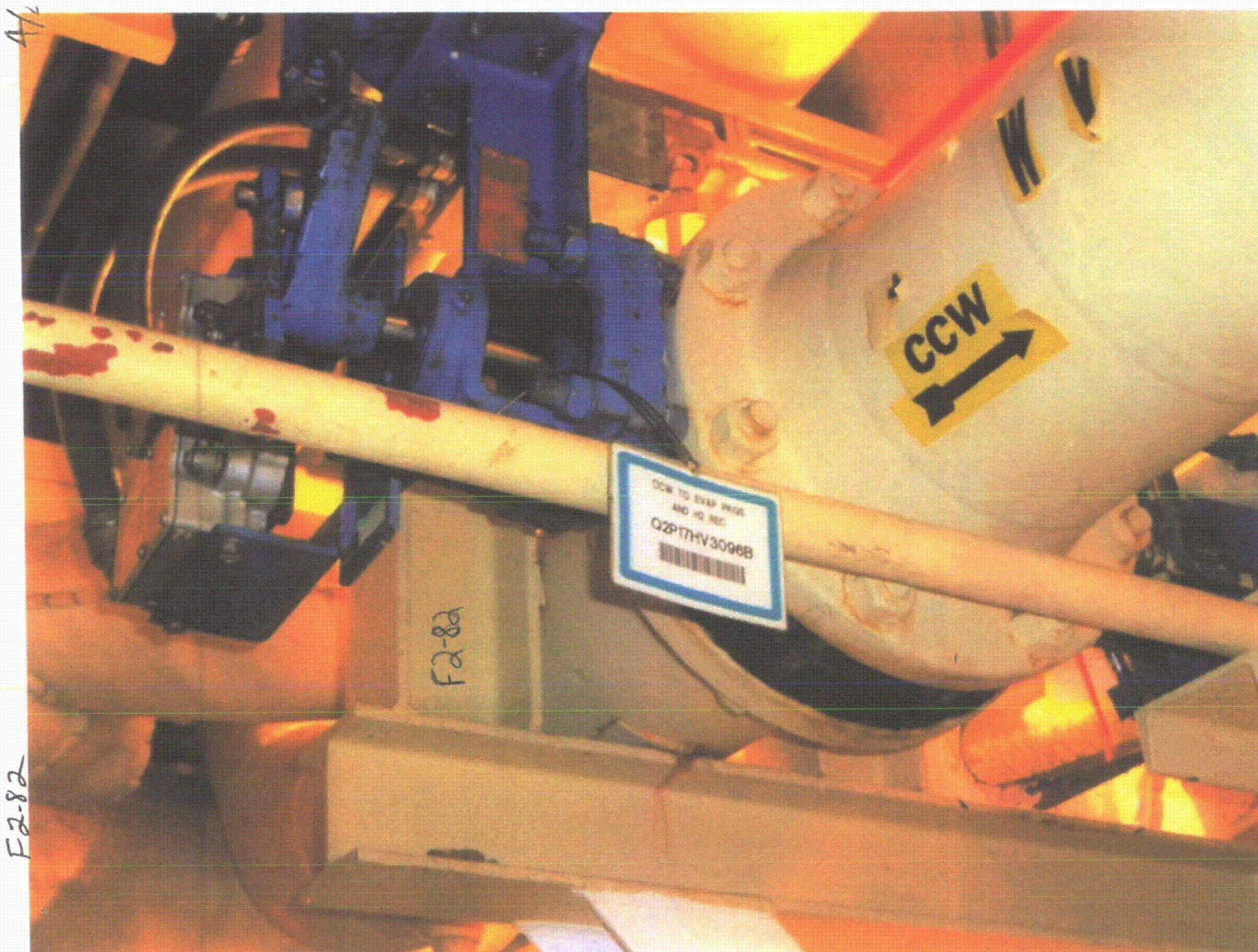
Evaluated by: Laura MacLay Laura MacLay Date: 8-22-12

Terry A. Munenix TERRY A. MUNENIX 8/22/12









F2.8A

Sheet 1 of 84  
 Status: Y  N  U  #24118

**Seismic Walkdown Checklist (SWC)**

Equipment ID No. Q2P17MOV3185B Equip. Class<sup>1</sup> 8

Equipment Description CCW INLET TO RHR HEAT EXCHANGER NO. 2

Location: Bldg. AUXILIARY Floor El. 83 Room, Area \_\_\_\_\_

Manufacturer, Model, Etc. (optional but recommended) \_\_\_\_\_

**Instructions for Completing Checklist**

This checklist may be used to document the results of the Seismic Walkdown of an item of equipment on the SWEL. The space below each of the following questions may be used to record the results of judgments and findings. Additional space is provided at the end of this checklist for documenting other comments.

**Anchorage**

1. Is the anchorage configuration verification required (i.e., is the item one of the 50% of SWEL items requiring such verification)? Y  N
  
2. Is the anchorage free of bent, broken, missing or loose hardware? Y  N  U  N/A   
W/L
  
3. Is the anchorage free of corrosion that is more than mild surface oxidation? Y  N  U  N/A
  
4. Is the anchorage free of visible cracks in the concrete near the anchors? Y  N  U  N/A
  
5. Is the anchorage configuration consistent with plant documentation? Y  N  U  N/A   
 (Note: This question only applies if the item is one of the 50% for which an anchorage configuration verification is required.)
  
6. Based on the above anchorage evaluations, is the anchorage free of potentially adverse seismic conditions? Y  N  U

<sup>1</sup> Enter the equipment class name from Appendix B: Classes of Equipment.

F2-84

Sheet 2 of 24 *9/21/12*  
Status: Y  N  U  *5/24/12*

**Seismic Walkdown Checklist (SWC)**

Equipment ID No. Q2P17MOV3185B Equip. Class: 8

Equipment Description CCW INLET TO RHR HEAT EXCHANGER NO. 2

**Interaction Effects**

7. Are soft targets free from impact by nearby equipment or structures? Y  N  U  N/A

8. Are overhead equipment, distribution systems, ceiling tiles and lighting, and masonry block walls not likely to collapse onto the equipment? Y  N  U  N/A

9. Do attached lines have adequate flexibility to avoid damage? Y  N  U  N/A

10. Based on the above seismic interaction evaluations, is equipment free of potentially adverse seismic interaction effects? Y  N  U

**Other Adverse Conditions**

11. Have you looked for and found no other seismic conditions that could adversely affect the safety functions of the equipment? Y  N  U

**Comments** (Additional pages may be added as necessary)

*NONE*

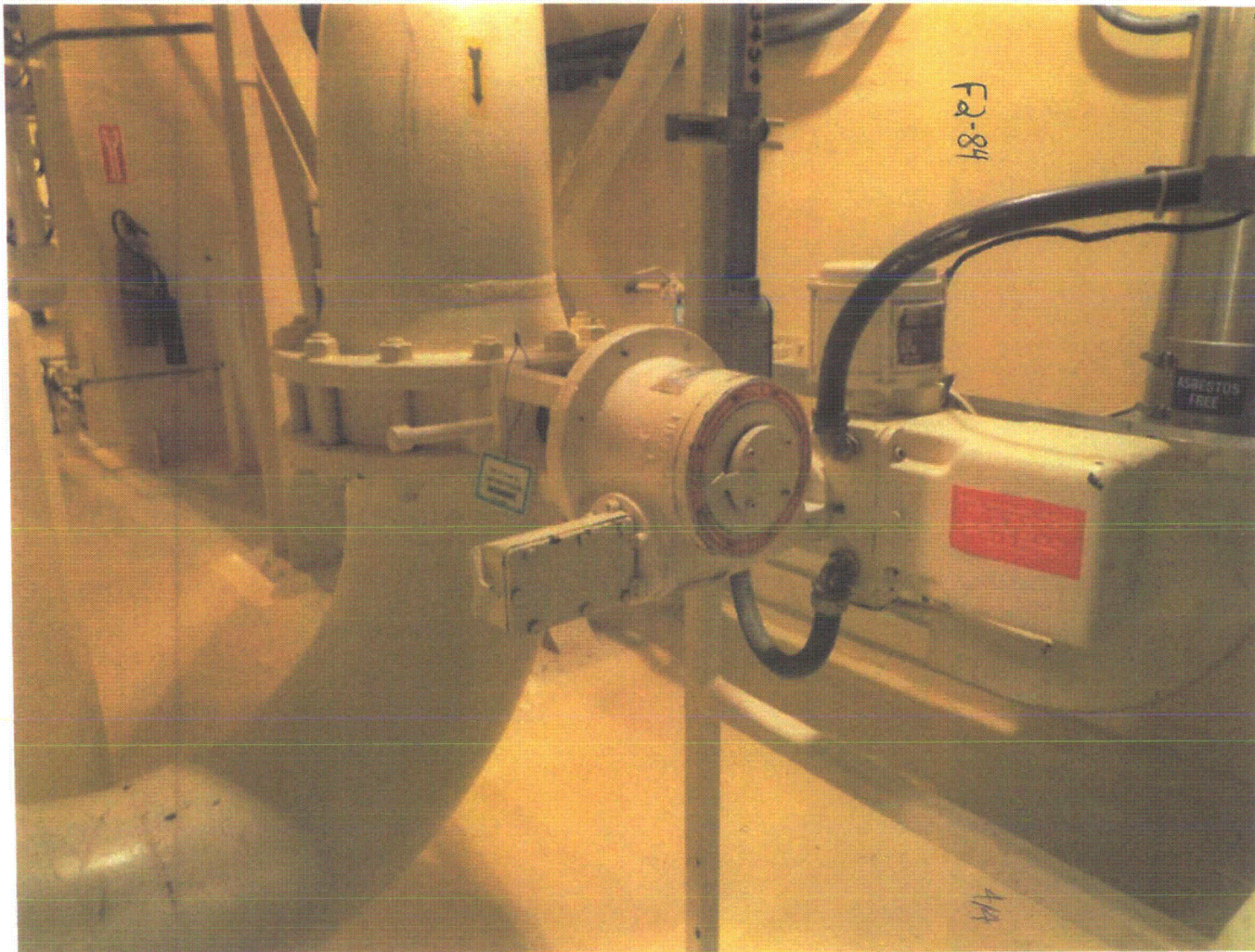
Evaluated by: *Paul Miktus* Date: 8-22-12  
PAUL MIKTUS

STEPHEN YUAN *[Signature]* Date: 8-22-12









F2-85

Sheet 1 of 84

Status:  Y  N  U

**Seismic Walkdown Checklist (SWC)**

Equipment ID No. Q2P17P001C Equip. Class<sup>1</sup> 5

Equipment Description CCW PUMP 2C TRAIN A

*Handwritten notes:*  
EOP  
EOP/2017

Location: Bldg. AUXILIARY Floor El. 100 Room, Area 2185

Manufacturer, Model, Etc. (optional but recommended) \_\_\_\_\_

**Instructions for Completing Checklist**

This checklist may be used to document the results of the Seismic Walkdown of an item of equipment on the SWEL. The space below each of the following questions may be used to record the results of judgments and findings. Additional space is provided at the end of this checklist for documenting other comments.

**Anchorage**

- 1. Is the anchorage configuration verification required (i.e., is the item one of the 50% of SWEL items requiring such verification)?  Y  N  U
- 2. Is the anchorage free of bent, broken, missing or loose hardware?  Y  N  U  N/A
- 3. Is the anchorage free of corrosion that is more than mild surface oxidation?  Y  N  U  N/A
- 4. Is the anchorage free of visible cracks in the concrete near the anchors?  Y  N  U  N/A
- 5. Is the anchorage configuration consistent with plant documentation?  Y  N  U  N/A  
(Note: This question only applies if the item is one of the 50% for which an anchorage configuration verification is required.)  
SEWS Package 7/93
- 6. Based on the above anchorage evaluations, is the anchorage free of potentially adverse seismic conditions?  Y  N  U

<sup>1</sup> Enter the equipment class name from Appendix B: Classes of Equipment.



F285

Sheet 2 of 24

Status: Y  N  U

**Seismic Walkdown Checklist (SWC)**

Equipment ID No. Q2P17P001C Equip. Class<sup>1</sup> 5

Equipment Description CCW PUMP 2C TRAIN A

**Interaction Effects**

7. Are soft targets free from impact by nearby equipment or structures? Y  N  U  N/A

8. Are overhead equipment, distribution systems, ceiling tiles and lighting, and masonry block walls not likely to collapse onto the equipment? Y  N  U  N/A

9. Do attached lines have adequate flexibility to avoid damage? Y  N  U  N/A

10. Based on the above seismic interaction evaluations, is equipment free of potentially adverse seismic interaction effects? Y  N  U

**Other Adverse Conditions**

11. Have you looked for and found no other seismic conditions that could adversely affect the safety functions of the equipment? Y  N  U

**Comments** (Additional pages may be added as necessary)

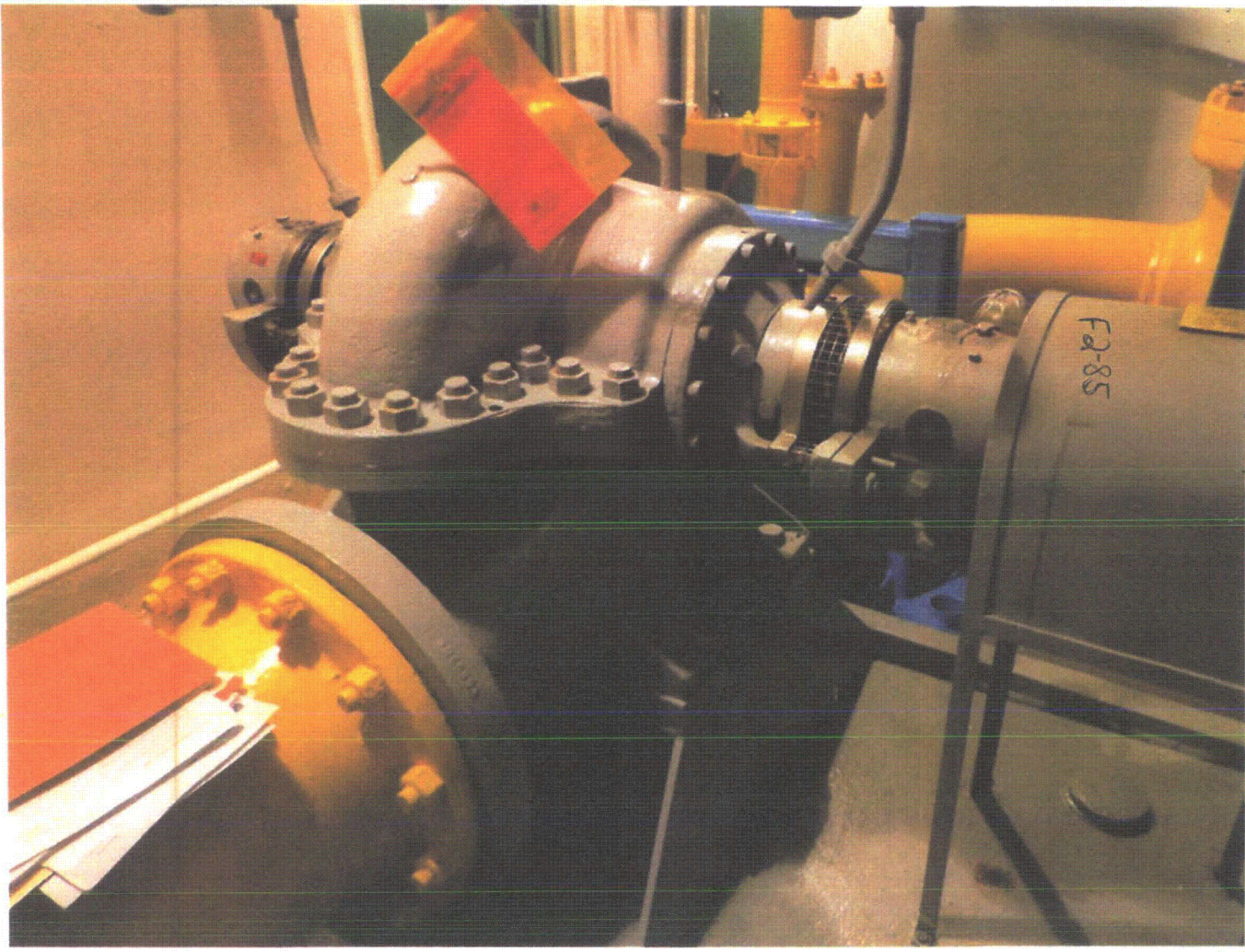
Area walkby for room 2185 is with folder P2-79 (Q2P17H001B).

Evaluated by: Terry A. Muller Terry A Muller Date: 8/27/12

Laura MacLay Laura MacLay 8/27/12







E2-85



F2-86

by 8/27/12

Sheet 1 of 6

Status: Y  N  U

**Seismic Walkdown Checklist (SWC)**

Equipment ID No. Q2P17T001 Equip. Class<sup>1</sup> 21

Equipment Description SURGE TANK (CCW)

Location: Bldg. AUXILIARY Floor El. 179 Room, Area 2506

Manufacturer, Model, Etc. (optional but recommended) \_\_\_\_\_

**Instructions for Completing Checklist**

This checklist may be used to document the results of the Seismic Walkdown of an item of equipment on the SWEL. The space below each of the following questions may be used to record the results of judgments and findings. Additional space is provided at the end of this checklist for documenting other comments.

**Anchorage**

1. Is the anchorage configuration verification required (i.e., is the item one of the 50% of SWEL items requiring such verification)? Y  N
  
2. Is the anchorage free of bent, broken, missing or loose hardware? Y  N  U  N/A
  
3. Is the anchorage free of corrosion that is more than mild surface oxidation? Y  N  U  N/A
  
4. Is the anchorage free of visible cracks in the concrete near the anchors? Y  N  U  N/A
  
5. Is the anchorage configuration consistent with plant documentation? Y  N  U  N/A   
(Note: This question only applies if the item is one of the 50% for which an anchorage configuration verification is required.)  
VERIFIED ANCHORAGES BE IN ACCORDANCE WITH REGULATIONS SHOWN ON SPHS DEPT. 7-5-98
  
6. Based on the above anchorage evaluations, is the anchorage free of potentially adverse seismic conditions? Y  N  U

<sup>1</sup> Enter the equipment class name from Appendix B: Classes of Equipment.

F2-8b

Alj 8/27/12  
Sheet 2 of 6

Status: Y N U

**Seismic Walkdown Checklist (SWC)**

Equipment ID No. Q2P17T001 Equip. Class: 21

Equipment Description SURGE TANK (CCW)

**Interaction Effects**

7. Are soft targets free from impact by nearby equipment or structures? Y N U N/A

8. Are overhead equipment, distribution systems, ceiling tiles and lighting, and masonry block walls not likely to collapse onto the equipment? Y N U N/A

9. Do attached lines have adequate flexibility to avoid damage? Y N U N/A

10. Based on the above seismic interaction evaluations, is equipment free of potentially adverse seismic interaction effects? Y N U

**Other Adverse Conditions**

11. Have you looked for and found no other seismic conditions that could adversely affect the safety functions of the equipment? Y N U

**Comments** (Additional pages may be added as necessary)

NO IE

Evaluated by: P. MIKUS *Juan Gonzalez* Date: 8-29-12

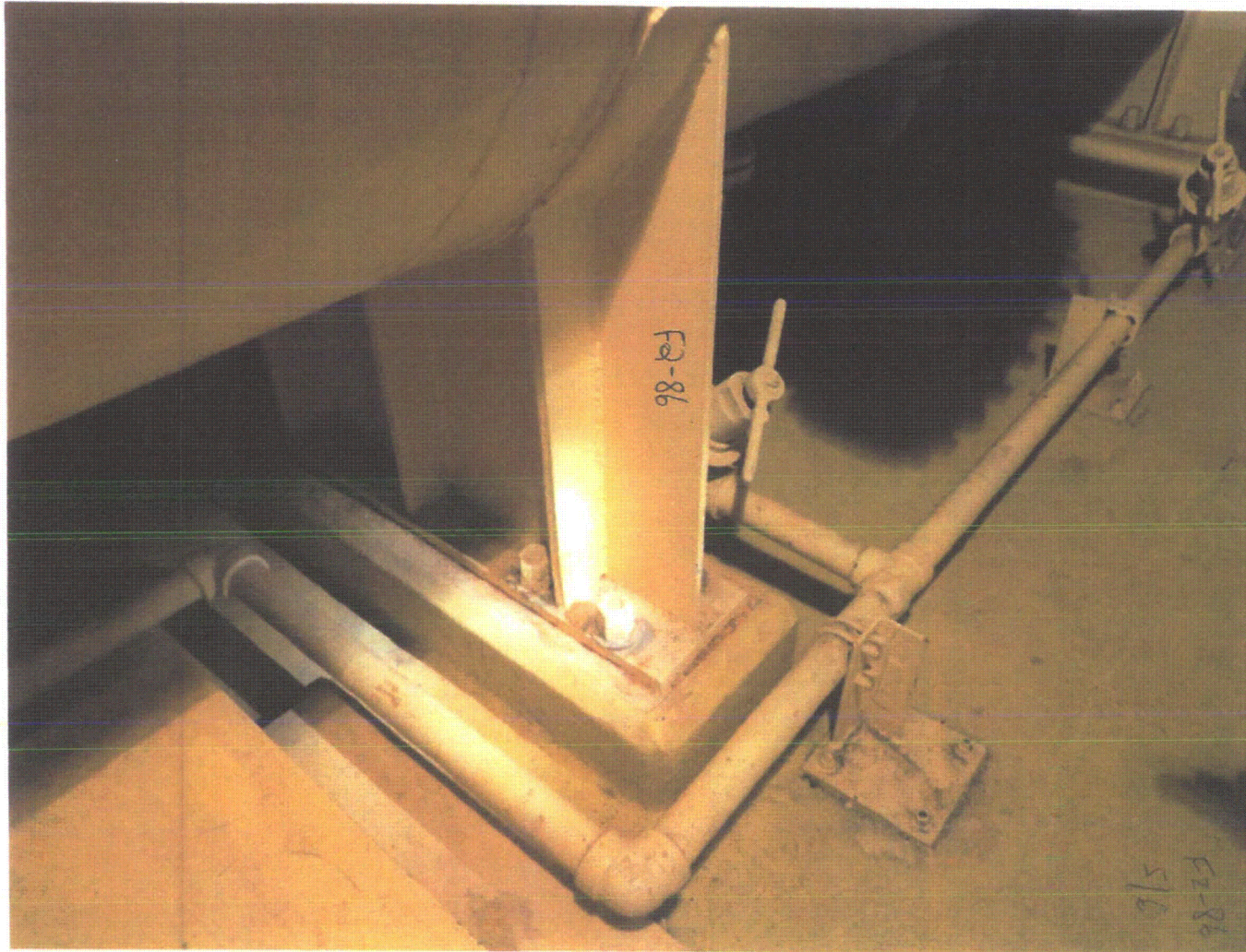
S. YUAN *Stephen Yuan* 8-29-12



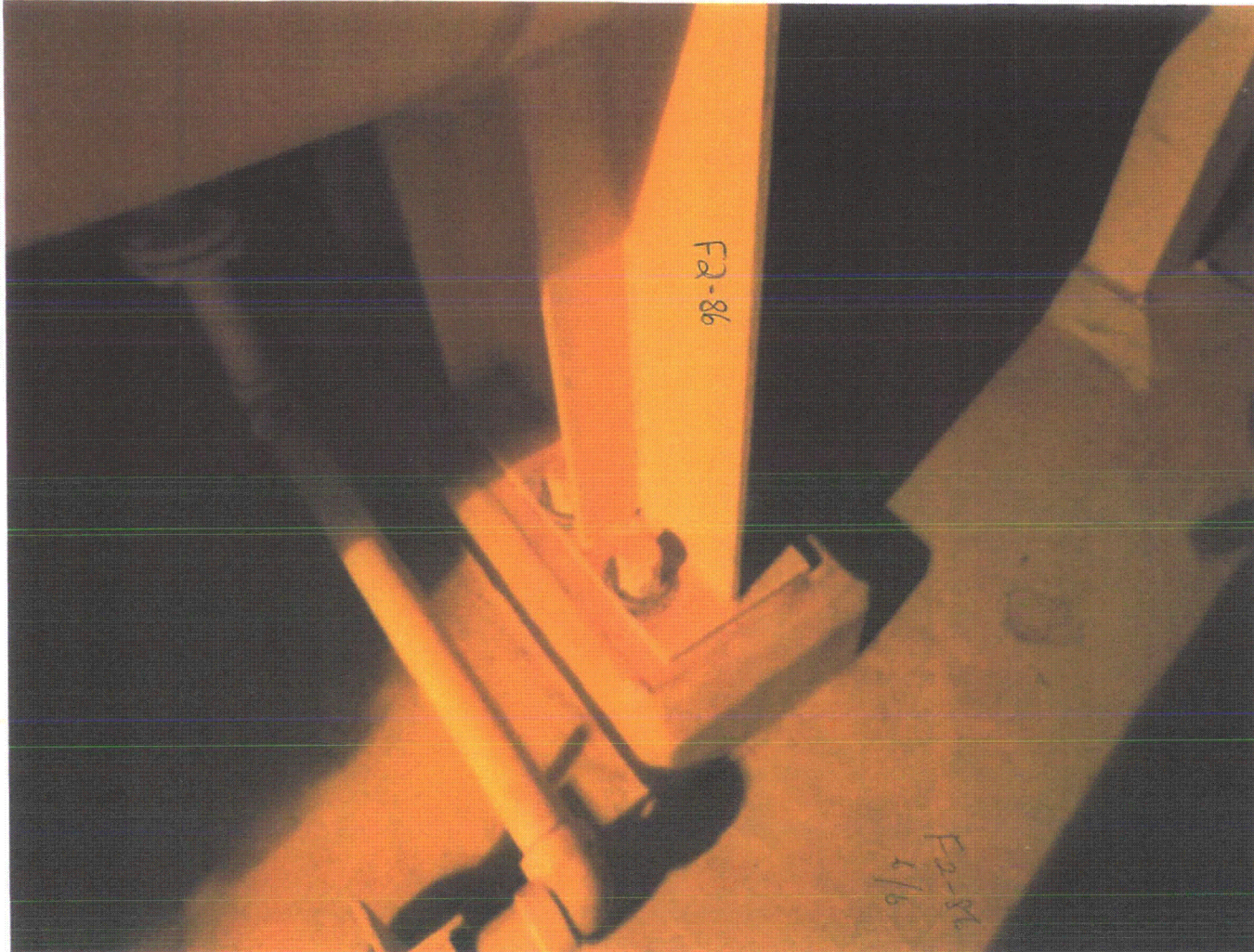














F2-87

Sheet 1 of 4  
 Status: Y  N  U

**Seismic Walkdown Checklist (SWC)**

Equipment ID No. Q2P18C002B Equip. Class<sup>1</sup> 12

Equipment Description TRAIN B EMERGENCY AIR COMPRESSOR

Location: Bldg. AUXILIARY Floor El. 100 Room, Area 2189

Manufacturer, Model, Etc. (optional but recommended) \_\_\_\_\_

**Instructions for Completing Checklist**

This checklist may be used to document the results of the Seismic Walkdown of an item of equipment on the SWEL. The space below each of the following questions may be used to record the results of judgments and findings. Additional space is provided at the end of this checklist for documenting other comments.

**Anchorage**

1. Is the anchorage configuration verification required (i.e., is the item one of the 50% of SWEL items requiring such verification)?  Y  N  U  
SENS For Equip. ID. NO. Q2P18C002B
2. Is the anchorage free of bent, broken, missing or loose hardware?  Y  N  U  N/A
3. Is the anchorage free of corrosion that is more than mild surface oxidation?  Y  N  U  N/A
4. Is the anchorage free of visible cracks in the concrete near the anchors?  Y  N  U  N/A
5. Is the anchorage configuration consistent with plant documentation?  Y  N  U  N/A  
 (Note: This question only applies if the item is one of the 50% for which an anchorage configuration verification is required.)
6. Based on the above anchorage evaluations, is the anchorage free of potentially adverse seismic conditions?  Y  N  U

<sup>1</sup> the equipment class name from Appendix B: Classes of Equipment.

F287

Sheet 2 of 4  
Status:  Y  N  U

**Seismic Walkdown Checklist (SWC)**

Equipment ID No. Q2P18C002B Equip. Class' 12

Equipment Description TRAIN B EMERGENCY AIR COMPRESSOR

Interaction Effects

7. Are soft targets free from impact by nearby equipment or structures?  Y  N  U  N/A

8. Are overhead equipment, distribution systems, ceiling tiles and lighting, and masonry block walls not likely to collapse onto the equipment?  Y  N  U  N/A

9. Do attached lines have adequate flexibility to avoid damage?  Y  N  U  N/A

10. Based on the above seismic interaction evaluations, is equipment free of potentially adverse seismic interaction effects?  Y  N  U

Other Adverse Conditions

11. Have you looked for and found no other seismic conditions that could adversely affect the safety functions of the equipment?  Y  N  U

Comments (Additional pages may be added as necessary)

Valve NZP20V09Q handle resting in contact w/ heat exchanger insulation. Heat exchanger is well supported & lateral movement of pipe is not a credible no operability issue.

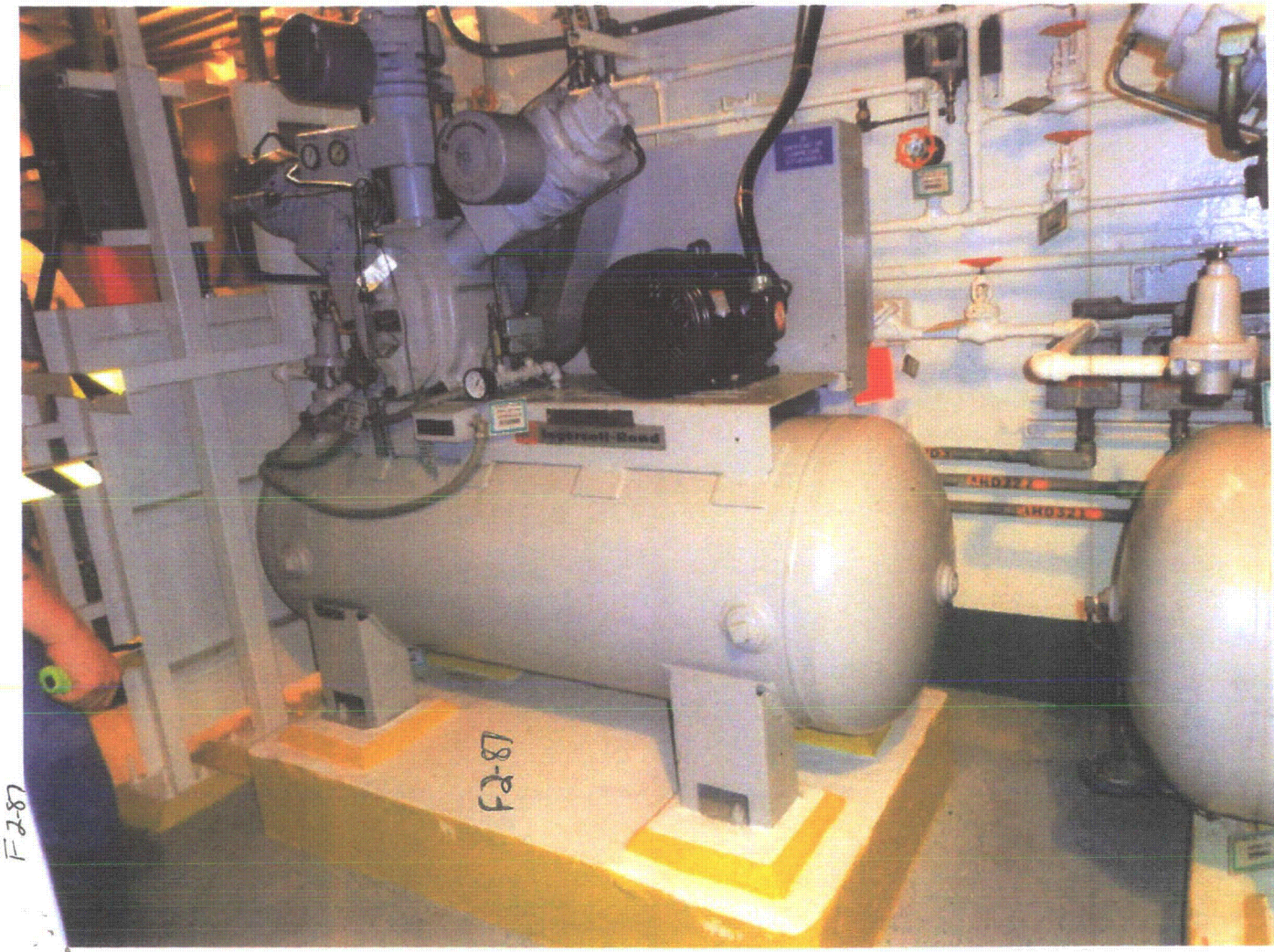
Evaluated by: [Signature] Date: 8/21

[Signature] Ben Miranda 5/21









F2-87



FZ-88

Sheet 1 of 8 <sup>5</sup>  
 Status: Y  N  U  <sup>Good</sup> <sub>8/31/12</sub>

**Seismic Walkdown Checklist (SWC)**

Equipment ID No. Q2P19HV3611 Equip. Class<sup>1</sup> 7

Equipment Description CTMT INST AIR ISO

Location: Bldg. AUXILIARY Floor El. 100 Room, Area 2184

Manufacturer, Model, Etc. (optional but recommended) \_\_\_\_\_

**Instructions for Completing Checklist**

This checklist may be used to document the results of the Seismic Walkdown of an item of equipment on the SWEL. The space below each of the following questions may be used to record the results of judgments and findings. Additional space is provided at the end of this checklist for documenting other comments.

**Anchorage**

1. Is the anchorage configuration verification required (i.e., is the item one of the 50% of SWEL items requiring such verification)? Y  N

IN LINE VALVE

2. Is the anchorage free of bent, broken, missing or loose hardware? Y  N  U  N/A

3. Is the anchorage free of corrosion that is more than mild surface oxidation? Y  N  U  N/A

4. Is the anchorage free of visible cracks in the concrete near the anchors? Y  N  U  N/A

5. Is the anchorage configuration consistent with plant documentation? (Note: This question only applies if the item is one of the 50% for which an anchorage configuration verification is required.) Y  N  U  N/A

6. Based on the above anchorage evaluations, is the anchorage free of potentially adverse seismic conditions? Y  N  U

<sup>1</sup> Enter the equipment class name from Appendix B: Classes of Equipment.

F288

Sheet 2 of 2  
Status: Y  N  U  *30M 8/27/12*

**Seismic Walkdown Checklist (SWC)**

Equipment ID No. Q2P19HV3611 Equip. Class: 7

Equipment Description CTMT INST AIR ISO

**Interaction Effects**

7. Are soft targets free from impact by nearby equipment or structures? Y  N  U  N/A

8. Are overhead equipment, distribution systems, ceiling tiles and lighting, and masonry block walls not likely to collapse onto the equipment? Y  N  U  N/A

9. Do attached lines have adequate flexibility to avoid damage? Y  N  U  N/A

10. Based on the above seismic interaction evaluations, is equipment free of potentially adverse seismic interaction effects? Y  N  U

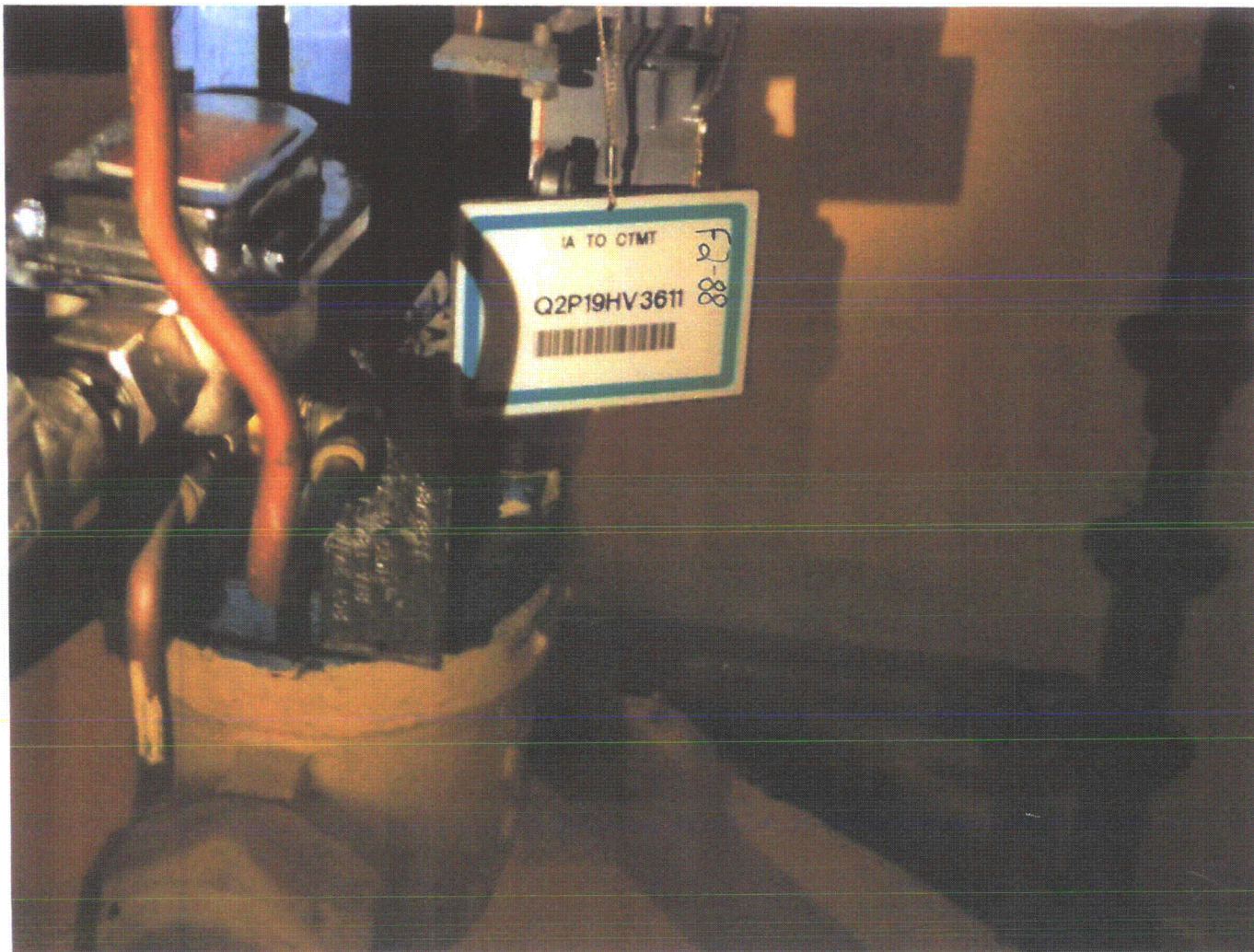
**Other Adverse Conditions**

11. Have you looked for and found no other seismic conditions that could adversely affect the safety functions of the equipment? Y  N  U

**Comments** (Additional pages may be added as necessary)

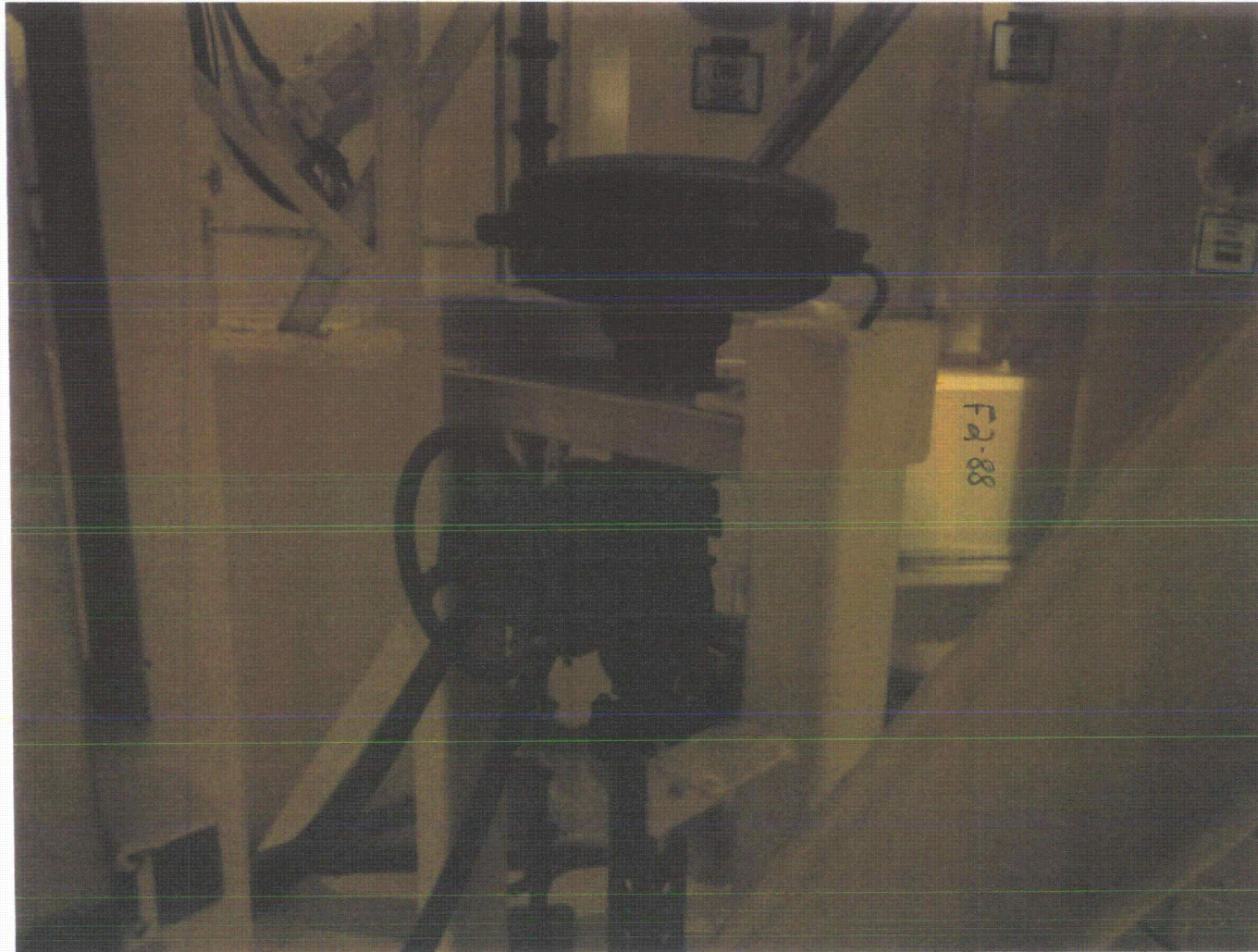
Evaluated by: P. MIKTES *P. Miktes* Date: 8-27-12  
S. YOAN *S. Yoan* 8-27-12



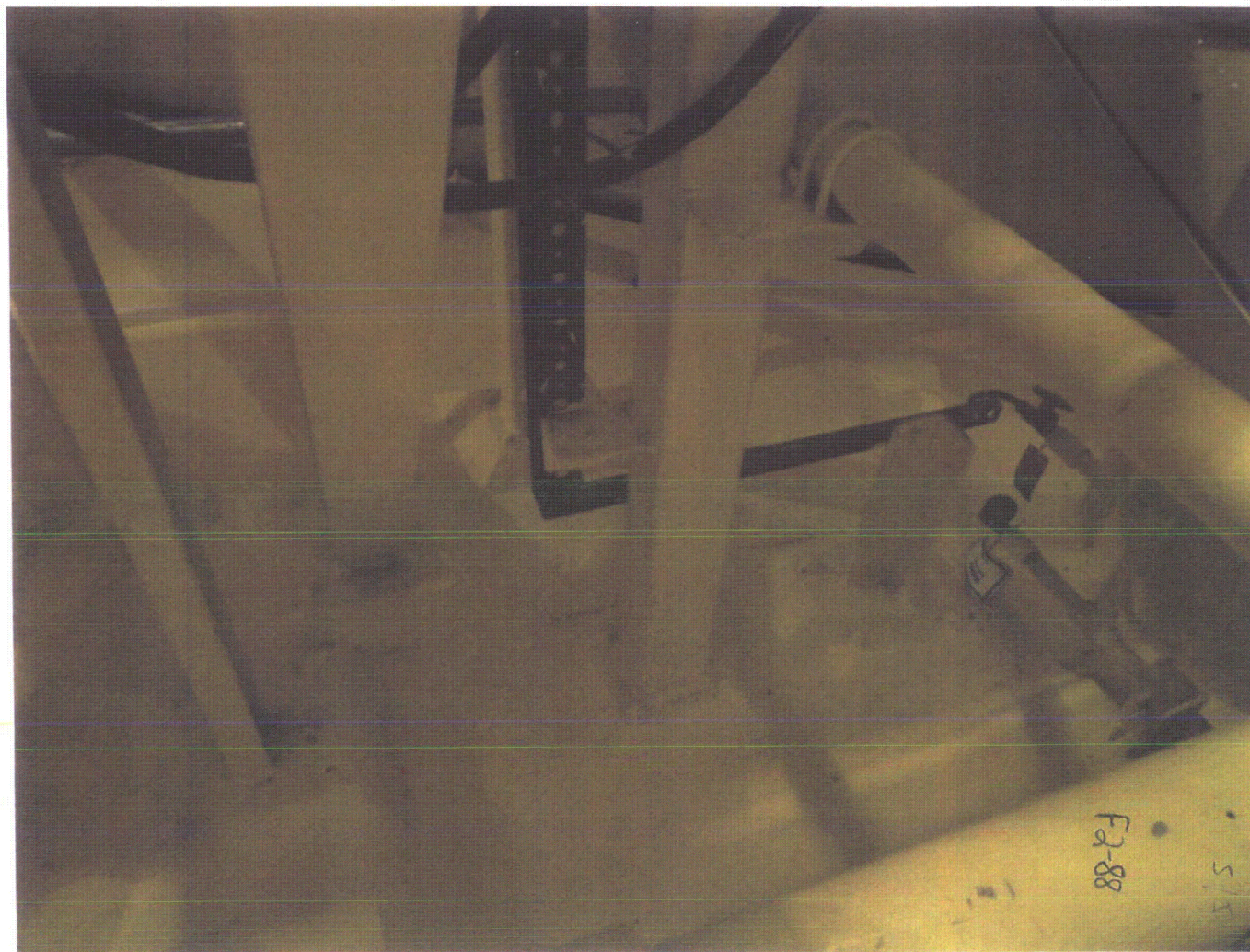


F2-88









F2-89

Sheet 1 of 4

Status: Y N U

**Seismic Walkdown Checklist (SWC)**

Equipment ID No. Q2R11B507, Pkg F2-89 Equip. Class<sup>1</sup> 4

Equipment Description LC TRANSFORMER 2S

Location: Bldg. DIESEL Floor El. 155 Room, Area 56C

Manufacturer, Model, Etc. (optional but recommended) \_\_\_\_\_

**Instructions for Completing Checklist**

This checklist may be used to document the results of the Seismic Walkdown of an item of equipment on the SWEL. The space below each of the following questions may be used to record the results of judgments and findings. Additional space is provided at the end of this checklist for documenting other comments.

**Anchorage**

- 1. Is the anchorage configuration verification required (i.e., is the item one of the 50% of SWEL items requiring such verification)? Y N
- 2. Is the anchorage free of bent, broken, missing or loose hardware? Y N U N/A
- 3. Is the anchorage free of corrosion that is more than mild surface oxidation? Y N U N/A
- 4. Is the anchorage free of visible cracks in the concrete near the anchors? Y N U N/A
- 5. Is the anchorage configuration consistent with plant documentation? Y N U N/A  
(Note: This question only applies if the item is one of the 50% for which an anchorage configuration verification is required.)  
*Reference SEWS package dated 5-28-94*
- 6. Based on the above anchorage evaluations, is the anchorage free of potentially adverse seismic conditions? Y N U

<sup>1</sup> Enter the equipment class name from Appendix B: Classes of Equipment



F2-89

Sheet 2 of 4  
Status: Y  N  U

**Seismic Walkdown Checklist (SWC)**

Equipment ID No. Q2R11B507, Pkg F2-89 Equip. Class: 4

Equipment Description LC TRANSFORMER 2S

**Interaction Effects**

7. Are soft targets free from impact by nearby equipment or structures? Y  N  U  N/A

8. Are overhead equipment, distribution systems, ceiling tiles and lighting, and masonry block walls not likely to collapse onto the equipment? Y  N  U  N/A

9. Do attached lines have adequate flexibility to avoid damage? Y  N  U  N/A

10. Based on the above seismic interaction evaluations, is equipment free of potentially adverse seismic interaction effects? Y  N  U

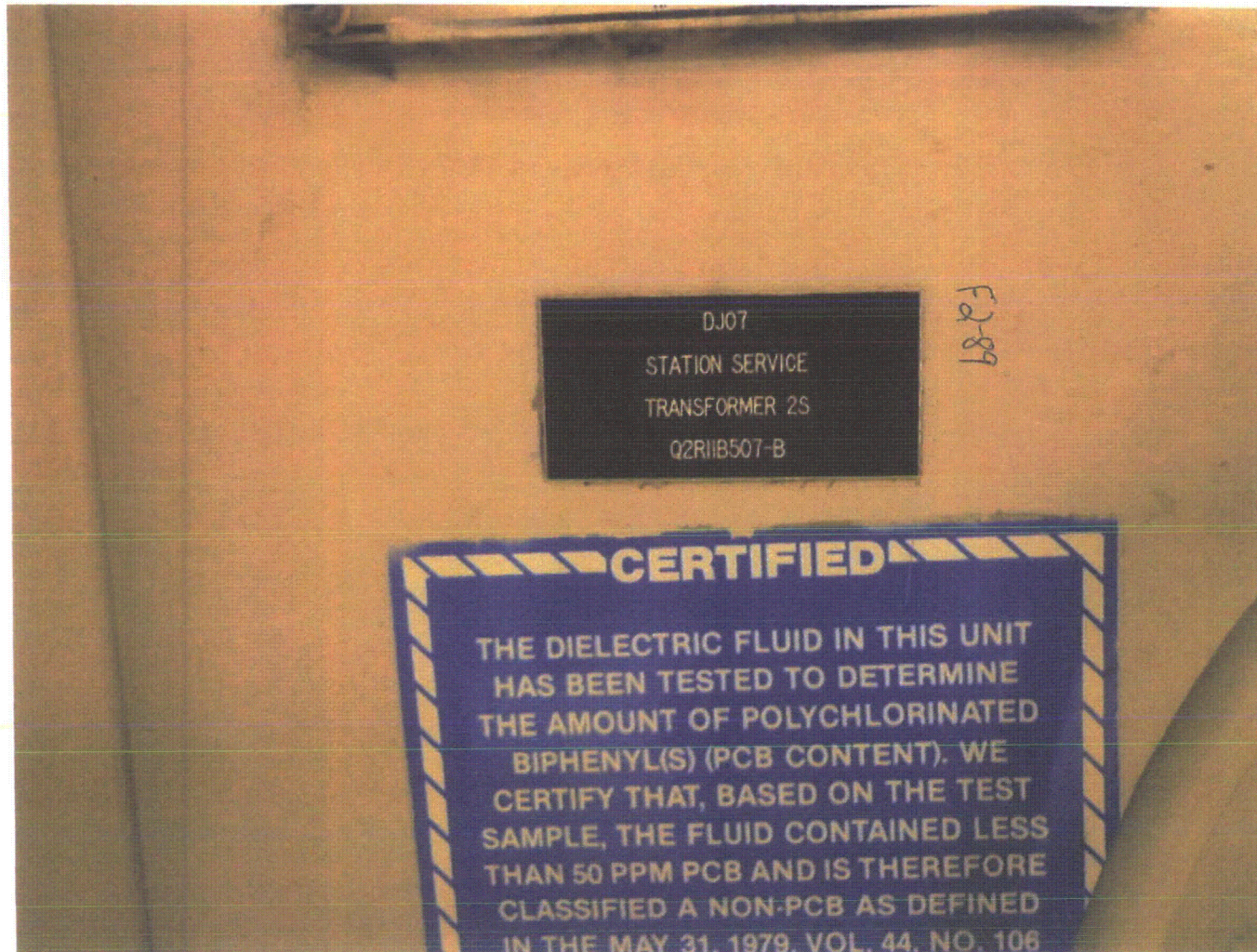
**Other Adverse Conditions**

11. Have you looked for and found no other seismic conditions that could adversely affect the safety functions of the equipment? Y  N  U

**Comments** (Additional pages may be added as necessary)

*Opening the transformer for internal inspection is considered disassembly.  
This package was originally signed on 8-24-12 but retyped for clarity on 10-23-12.*

Evaluated by: Terry A. Mullenix *[Signature]* 10/23/12 Date: 8/24/12  
*[Signature]* Laura Maclay by Telecon 10/23/12 8/24/12







F2-90

Sheet 1 of 4

Status: Y  N  U

**Seismic Walkdown Checklist (SWC)**

Equipment ID No. Q2R16B007 Equip. Class<sup>1</sup> 2

Equipment Description 600V LOAD CENTER 2E

Location: Bldg. AUXILIARY Floor El. 121 Room, Area 2229

Manufacturer, Model, Etc. (optional but recommended) \_\_\_\_\_

**Instructions for Completing Checklist**

This checklist may be used to document the results of the Seismic Walkdown of an item of equipment on the SWEL. The space below each of the following questions may be used to record the results of judgments and findings. Additional space is provided at the end of this checklist for documenting other comments.

**Anchorage**

1. Is the anchorage configuration verification required (i.e., is the item one of the 50% of SWEL items requiring such verification)?  Y  N  
*Anchorage is inside panel and cannot be verified*
  
2. Is the anchorage free of bent, broken, missing or loose hardware?  Y  N  U  N/A
  
3. Is the anchorage free of corrosion that is more than mild surface oxidation?  Y  N  U  N/A
  
4. Is the anchorage free of visible cracks in the concrete near the anchors?  Y  N  U  N/A
  
5. Is the anchorage configuration consistent with plant documentation?  Y  N  U  N/A  
 (Note: This question only applies if the item is one of the 50% for which an anchorage configuration verification is required.)
  
6. Based on the above anchorage evaluations, is the anchorage free of potentially adverse seismic conditions?  Y  N  U

<sup>1</sup> Enter the equipment class name from Appendix B: Classes of Equipment.



F2-90

Sheet 2 of 4  
Status: Y  N  U

**Seismic Walkdown Checklist (SWC)**

Equipment ID No. Q2R16B007 Equip. Class 2

Equipment Description 600V LOAD CENTER 2E

Interaction Effects

7. Are soft targets free from impact by nearby equipment or structures? Y  N  U  N/A

8. Are overhead equipment, distribution systems, ceiling tiles and lighting, and masonry block walls not likely to collapse onto the equipment? Y  N  U  N/A

9. Do attached lines have adequate flexibility to avoid damage? Y  N  U  N/A

10. Based on the above seismic interaction evaluations, is equipment free of potentially adverse seismic interaction effects? Y  N  U

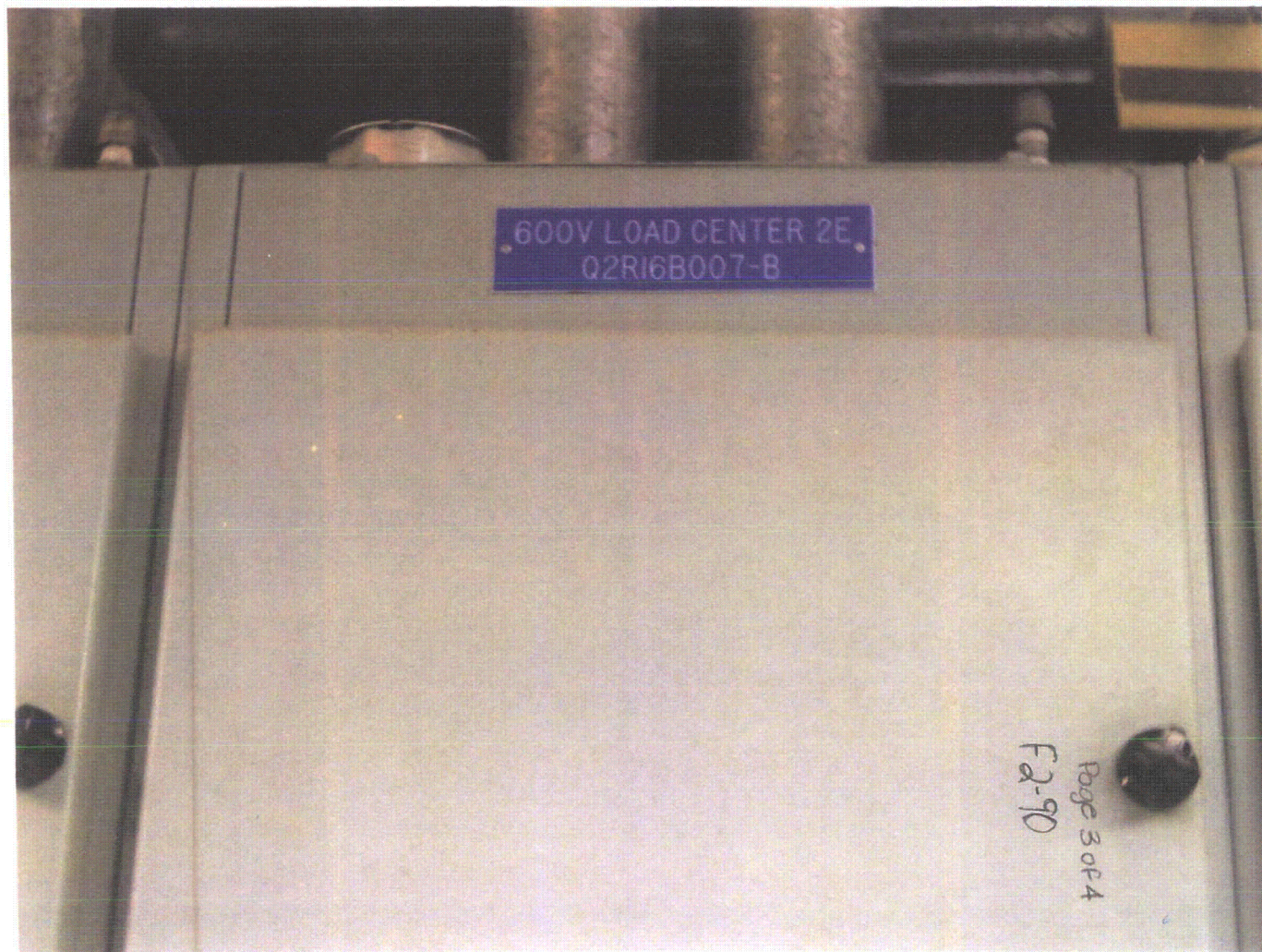
Other Adverse Conditions

11. Have you looked for and found no other seismic conditions that could adversely affect the safety functions of the equipment? Y  N  U

Comments (Additional pages may be added as necessary)

Evaluated by: Jerry A. Mullen / Jerry A. Mullen Date: 8/24/2012

Laura McClay Laura McClay 8/24/12



F2-90

F2-90  
Page 3 of 4



F2-90

Page 4 of 4



F2-91

Sheet 1 of 4

Status: Y  N  U

**Seismic Walkdown Checklist (SWC)**

Equipment ID No. Q2R17B510 Equip. Class<sup>1</sup> 1

Equipment Description MCC 2T

Location: Bldg. DIESEL Floor El. 155 Room, Area 59

Manufacturer, Model, Etc. (optional but recommended) \_\_\_\_\_

**Instructions for Completing Checklist**

This checklist may be used to document the results of the Seismic Walkdown of an item of equipment on the SWEL. The space below each of the following questions may be used to record the results of judgments and findings. Additional space is provided at the end of this checklist for documenting other comments.

**Anchorage**

1. Is the anchorage configuration verification required (i.e., is the item one of the 50% of SWEL items requiring such verification)?  Y  N  
 Anchorage is inside of cabinet and was not visible during the visual inspection.
2. Is the anchorage free of bent, broken, missing or loose hardware?  Y  N  U  N/A
3. Is the anchorage free of corrosion that is more than mild surface oxidation?  Y  N  U  N/A
4. Is the anchorage free of visible cracks in the concrete near the anchors?  Y  N  U  N/A
5. Is the anchorage configuration consistent with plant documentation?  Y  N  U  N/A  
 (Note: This question only applies if the item is one of the 50% for which an anchorage configuration verification is required.)  
 Reference SEW's package dated 7/8/93.
6. Based on the above anchorage evaluations, is the anchorage free of potentially adverse seismic conditions?  Y  N  U

<sup>1</sup> Enter the equipment class name from Appendix B: Classes of Equipment.



F291

Sheet 2 of 84  
Status: Y  N  U

**Seismic Walkdown Checklist (SWC)**

Equipment ID No. Q2R17B510 Equip. Class' 1

Equipment Description MCC 2T

Interaction Effects

7. Are soft targets free from impact by nearby equipment or structures? Y  N  U  N/A

8. Are overhead equipment, distribution systems, ceiling tiles and lighting, and masonry block walls not likely to collapse onto the equipment? Y  N  U  N/A

9. Do attached lines have adequate flexibility to avoid damage? Y  N  U  N/A

10. Based on the above seismic interaction evaluations, is equipment free of potentially adverse seismic interaction effects? Y  N  U

Other Adverse Conditions

11. Have you looked for and found no other seismic conditions that could adversely affect the safety functions of the equipment? Y  N  U

Comments (Additional pages may be added as necessary)

Area walkby for room 59 is with equipment QSY41M542D.

Evaluated by: Laura Masclay Laura Masclay Date: 8-24-12

Terry A. Kullenix Terry A. Kullenix 8/24/2012







F2-92

Sheet 1 of 4

Status: Y  N  U

**Seismic Walkdown Checklist (SWC)**

Equipment ID No. Q2R18B030 Equip. Class<sup>1</sup> 2

Equipment Description POWER DISCONNECT SWITCH

Location: Bldg. AUXILIARY Floor El. 139 Room, Area 2222

Manufacturer, Model, Etc. (optional but recommended) \_\_\_\_\_

**Instructions for Completing Checklist**

This checklist may be used to document the results of the Seismic Walkdown of an item of equipment on the SWEL. The space below each of the following questions may be used to record the results of judgments and findings. Additional space is provided at the end of this checklist for documenting other comments.

**Anchorage**

- 1. Is the anchorage configuration verification required (i.e., is the item one of the 50% of SWEL items requiring such verification)? Y  N
- 2. Is the anchorage free of bent, broken, missing or loose hardware? Y  N  U  N/A
- 3. Is the anchorage free of corrosion that is more than mild surface oxidation? Y  N  U  N/A
- 4. Is the anchorage free of visible cracks in the concrete near the anchors? Y  N  U  N/A
- 5. Is the anchorage configuration consistent with plant documentation? Y  N  U  N/A   
(Note: This question only applies if the item is one of the 50% for which an anchorage configuration verification is required.)
- 6. Based on the above anchorage evaluations, is the anchorage free of potentially adverse seismic conditions? Y  N  U

ADDITIONAL COMMENTS: SEISMIC WALKDOWN OF THE SEISMIC Q2R18B030-A, UNIT 2, 3-20-95.

<sup>1</sup> Enter the equipment class name from Appendix B: Classes of Equipment.



F292

8/28/12

Sheet 2 of 4

Status: Y  N  U

**Seismic Walkdown Checklist (SWC)**

Equipment ID No. Q2R18B030 Equip. Class: 2

Equipment Description POWER DISCONNECT SWITCH

**Interaction Effects**

7. Are soft targets free from impact by nearby equipment or structures? Y  N  U  N/A

8. Are overhead equipment, distribution systems, ceiling tiles and lighting, and masonry block walls not likely to collapse onto the equipment? Y  N  U  N/A

9. Do attached lines have adequate flexibility to avoid damage? Y  N  U  N/A

10. Based on the above seismic interaction evaluations, is equipment free of potentially adverse seismic interaction effects? Y  N  U

**Other Adverse Conditions**

11. Have you looked for and found no other seismic conditions that could adversely affect the safety functions of the equipment? Y  N  U

**Comments** (Additional pages may be added as necessary)

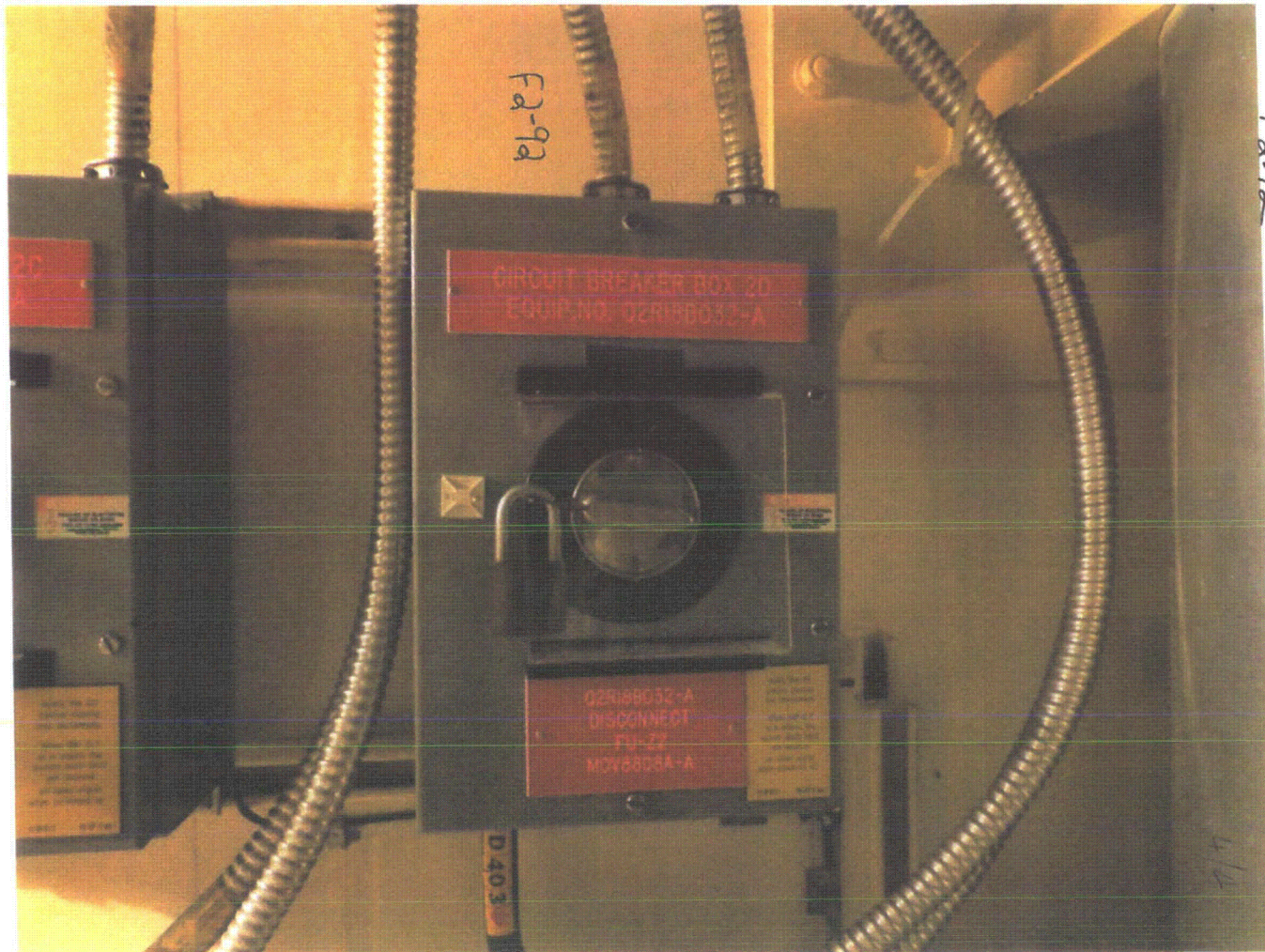
AWB IS IN F2-12

Evaluated by: S. YUAN Stephen Yuan Date: 8-28-12

P. W. K. J. S. Paul W. K. J. S. 8-28-12







F2-93

Sheet 1 of 4  
 Status: Y  N  U

**Seismic Walkdown Checklist (SWC)**

Equipment ID No. Q2R18B032 Equip. Class<sup>1</sup> 14

Equipment Description CIRCUIT BREAKER BOX

Location: Bldg. AUXILIARY Floor El. 139 Room, Area 2392

Manufacturer, Model, Etc. (optional but recommended) \_\_\_\_\_

**Instructions for Completing Checklist**

This checklist may be used to document the results of the Seismic Walkdown of an item of equipment on the SWEL. The space below each of the following questions may be used to record the results of judgments and findings. Additional space is provided at the end of this checklist for documenting other comments.

**Anchorage**

1. Is the anchorage configuration verification required (i.e., is the item one of the 50% of SWEL items requiring such verification)? Y  N
  
  2. Is the anchorage free of bent, broken, missing or loose hardware? Y  N  U  N/A
  
  3. Is the anchorage free of corrosion that is more than mild surface oxidation? Y  N  U  N/A
  
  4. Is the anchorage free of visible cracks in the concrete near the anchors? Y  N  U  N/A
  
  5. Is the anchorage configuration consistent with plant documentation? Y  N  U  N/A   
 (Note: This question only applies if the item is one of the 50% for which an anchorage configuration verification is required.)
- ANCHORAGE ADEQUACY VERIFIED IN SEWS Q2R18B032-A, DATED 7-1-93  
 (BY COMPARISON TO INFORMATION CONTAINED)
6. Based on the above anchorage evaluations, is the anchorage free of potentially adverse seismic conditions? Y  N  U

<sup>1</sup> Enter the equipment class name from Appendix B: Classes of Equipment.



F293

Sheet 2 of 34  
Status: Y  N  U  5/28/12

**Seismic Walkdown Checklist (SWC)**

Equipment ID No. Q2R18B032 Equip. Class: 14

Equipment Description CIRCUIT BREAKER BOX

**Interaction Effects**

7. Are soft targets free from impact by nearby equipment or structures? Y  N  U  N/A

8. Are overhead equipment, distribution systems, ceiling tiles and lighting, and masonry block walls not likely to collapse onto the equipment? Y  N  U  N/A

9. Do attached lines have adequate flexibility to avoid damage? Y  N  U  N/A

10. Based on the above seismic interaction evaluations, is equipment free of potentially adverse seismic interaction effects? Y  N  U

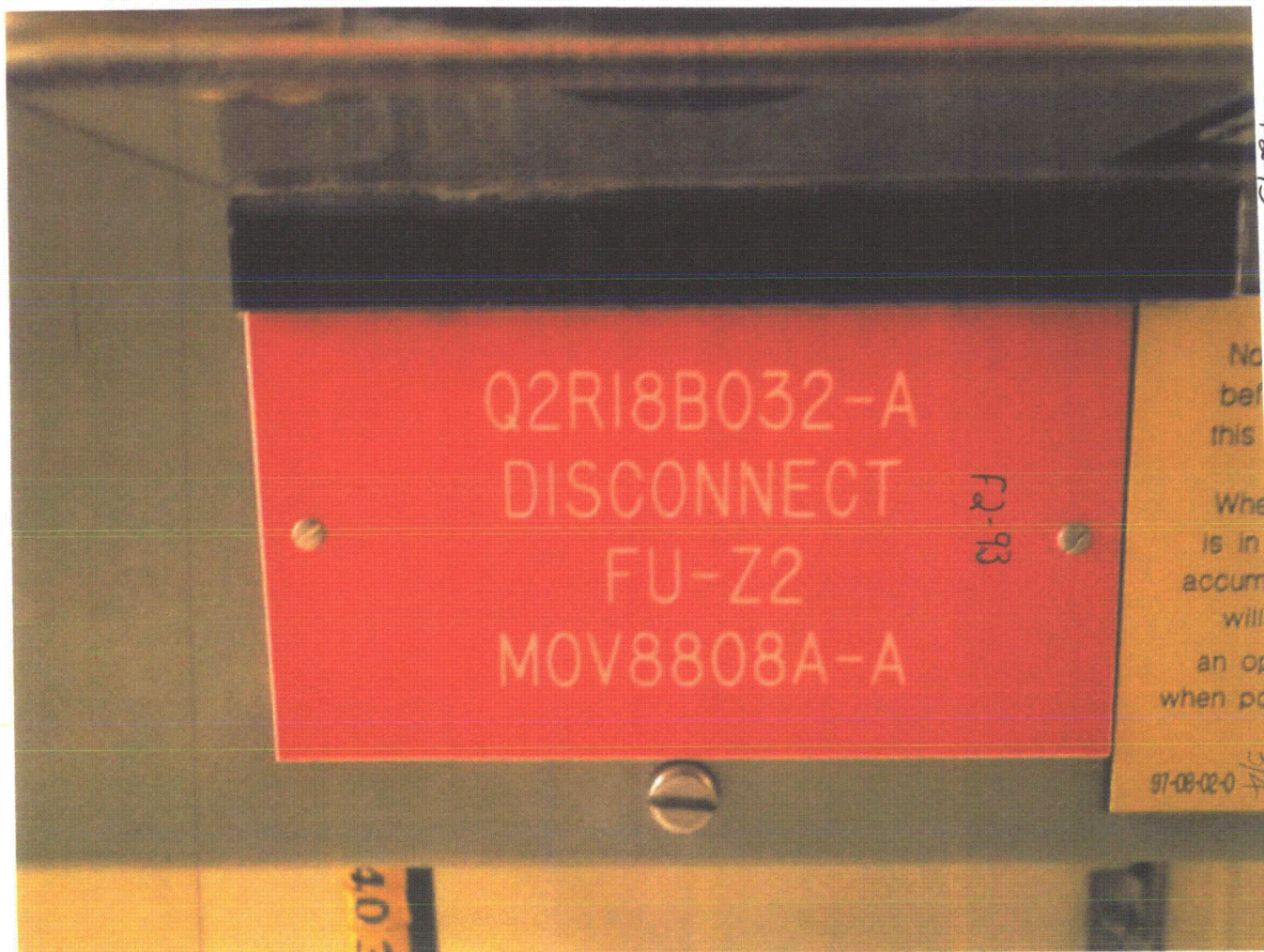
**Other Adverse Conditions**

11. Have you looked for and found no other seismic conditions that could adversely affect the safety functions of the equipment? Y  N  U

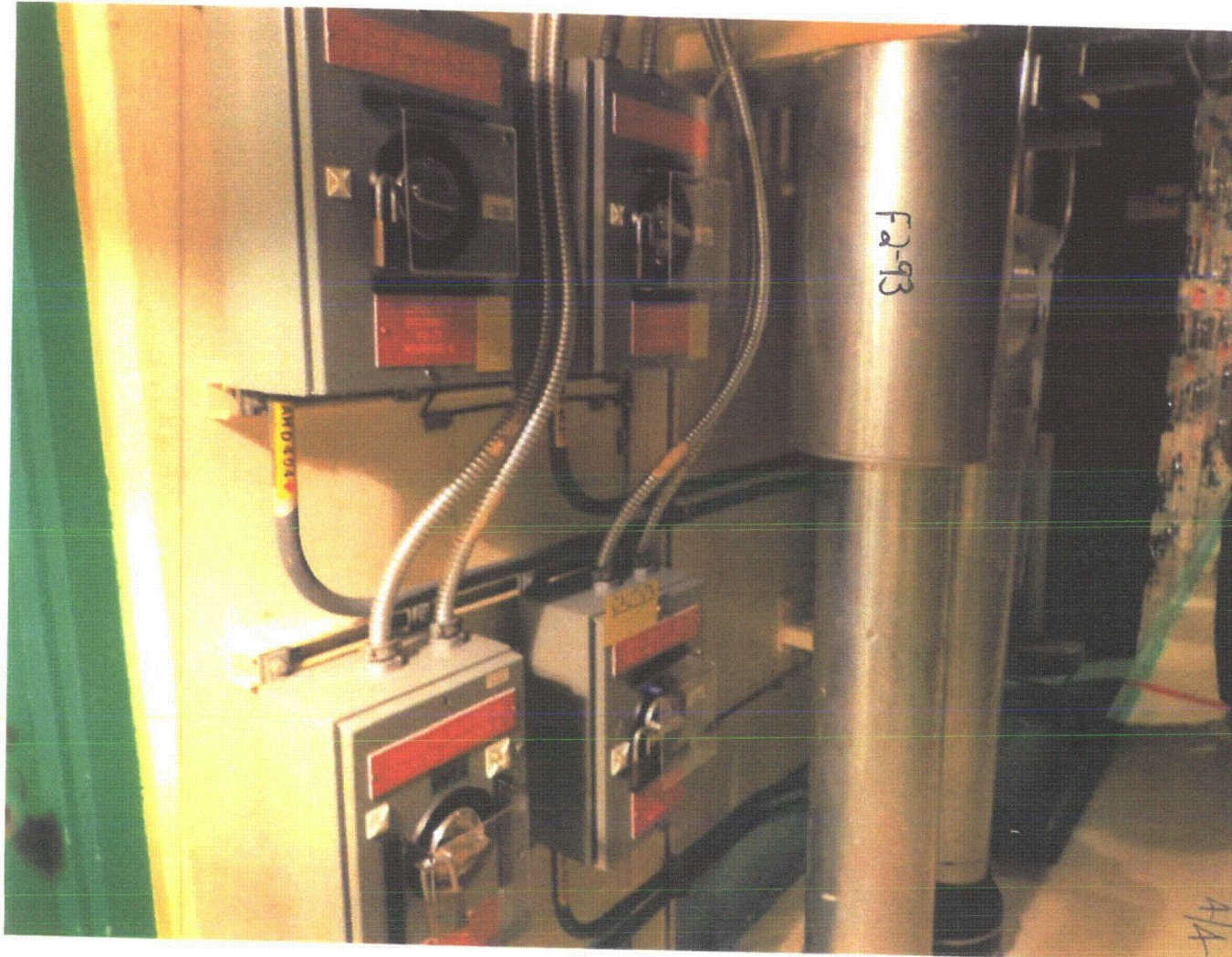
**Comments** (Additional pages may be added as necessary)

AREA WALK BY FOR RAI 2572 IS INCLUDED IN PRG 17-25

Evaluated by: Stephan Yoon Date: 8-28-12  
Paul Smith 8-28-12







1. P2-9A

Sheet 1 of 3

Status:  Y  N  U

**Seismic Walkdown Checklist (SWC)**

Equipment ID No. Q2R18B034 Equip. Class<sup>1</sup> 2

Equipment Description POWER DISCONNECT SWITCH 2322

Location: Bldg. AUXILIARY Floor El. 139 Room, Area 2322

Manufacturer, Model, Etc. (optional but recommended) \_\_\_\_\_

**Instructions for Completing Checklist**

This checklist may be used to document the results of the Seismic Walkdown of an item of equipment on the SWEL. The space below each of the following questions may be used to record the results of judgments and findings. Additional space is provided at the end of this checklist for documenting other comments.

**Anchorage**

1. Is the anchorage configuration verification required (i.e., is the item one of the 50% of SWEL items requiring such verification)?  YES  NO
2. Is the anchorage free of bent, broken, missing or loose hardware?  Y  N  U  N/A
3. Is the anchorage free of corrosion that is more than mild surface oxidation?  Y  N  U  N/A
4. Is the anchorage free of visible cracks in the concrete near the anchors?  Y  N  U  N/A
5. Is the anchorage configuration consistent with plant documentation?  YES  N  U  N/A

(Note: This question only applies if the item is one of the 50% for which an anchorage configuration verification is required.)

Observed top two connection clips compliant w/ photos shown SEWS for component Q2R18B034-B, bottom two connection clips are identical to top two. Also, we observed four unistrut bolts which is a typical unistrut connection. Additionally observed 12 unistrut bolts connections in three adjacent identical circuit breakers which are also identical. Anchorage configuration is validated.

<sup>1</sup> Enter the equipment class name from Appendix B: Classes of Equipment.



F2-94

Sheet 2 of 3  
Status:  Y  N  U

**Seismic Walkdown Checklist (SWC)**

Equipment ID No. Q2R18B034 Equip. Class' 2

Equipment Description POWER DISCONNECT SWITCH

Interaction Effects

7. Are soft targets free from impact by nearby equipment or structures?  Y  N  U  N/A

8. Are overhead equipment, distribution systems, ceiling tiles and lighting, and masonry block walls not likely to collapse onto the equipment?  Y  N  U  N/A

9. Do attached lines have adequate flexibility to avoid damage?  Y  N  U  N/A

10. Based on the above seismic interaction evaluations, is equipment free of potentially adverse seismic interaction effects?  Y  N  U

Other Adverse Conditions

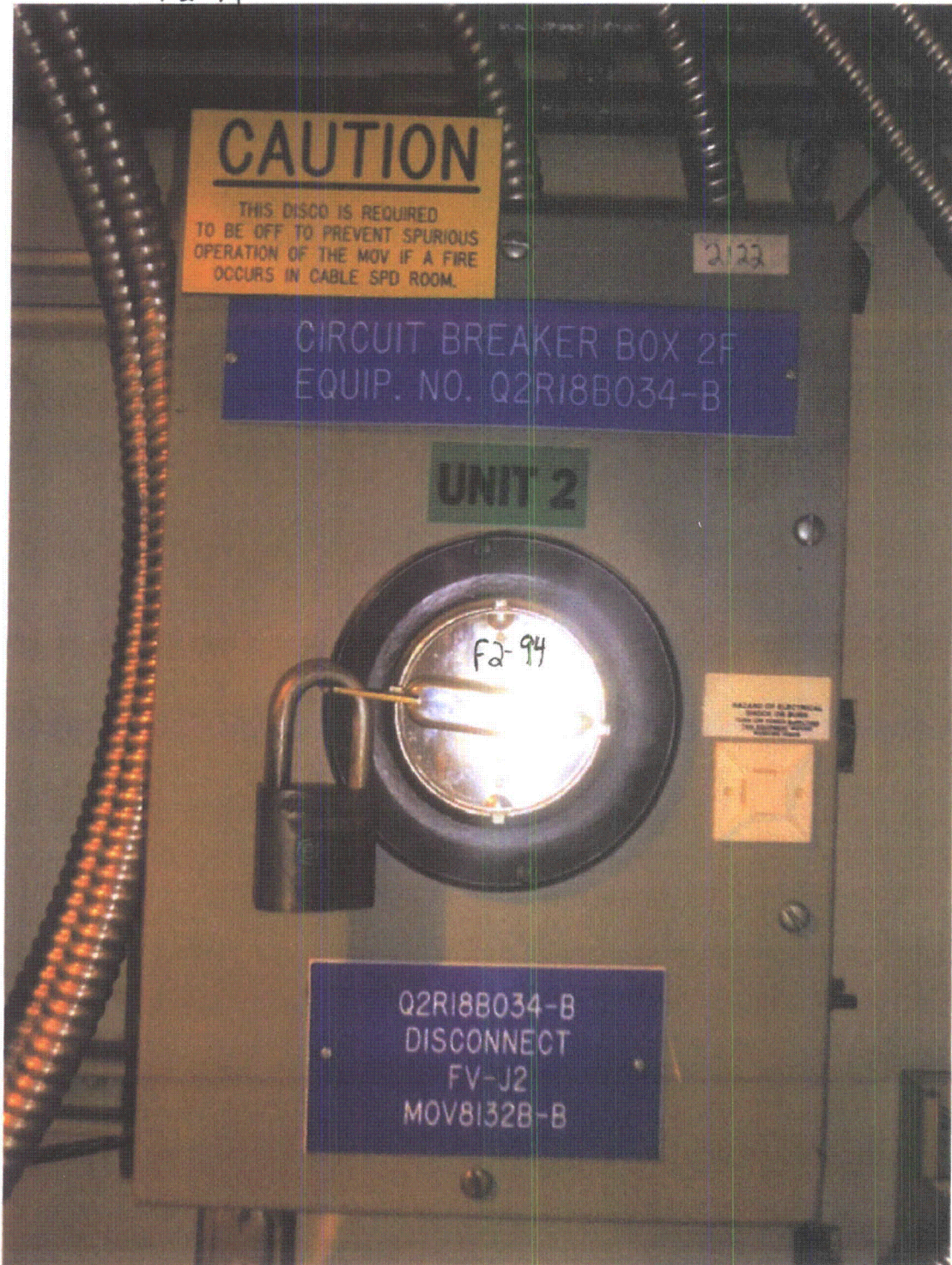
11. Have you looked for and found no other seismic conditions that could adversely affect the safety functions of the equipment?  Y  N  U

Comments (Additional pages may be added as necessary) There are no plant drawings for the anchorage of this wall component. The SDC's SEWS Package evaluated the anchorage based in judgement. The anchorage is not specifically described. However, the anchorage is shown in a picture attached to the SEWS. The configuration of the anchorage in the field was ~~determined~~ determined to match the configuration from the picture as well as to match the anchorage configuration of other similar components in the area.

Evaluated by: [Signature] Magic Farah Date: 8/24/12

[Signature] Ron Miranda 8/24/12

F2-94





12.45

Sheet 1 of 3

Status: Y  N  U

**Seismic Walkdown Checklist (SWC)**

Equipment ID No. Q2R18B043 Equip. Class<sup>1</sup> 2

Equipment Description MOV POWER DISCONNECT SWITCH

Location: Bldg. AUXILIARY Floor El. 139 Room, Area ~~2312~~ 2312

Manufacturer, Model, Etc. (optional but recommended) \_\_\_\_\_

**Instructions for Completing Checklist**

This checklist may be used to document the results of the Seismic Walkdown of an item of equipment on the SWEL. The space below each of the following questions may be used to record the results of judgments and findings. Additional space is provided at the end of this checklist for documenting other comments.

**Anchorage**

1. Is the anchorage configuration verification required (i.e., is the item one of the 50% of SWEL items requiring such verification)?  Y  N  U  *PM*

2. Is the anchorage free of bent, broken, missing or loose hardware?  Y  N  U  N/A

3. Is the anchorage free of corrosion that is more than mild surface oxidation?  Y  N  U  N/A

4. Is the anchorage free of visible cracks in the concrete near the anchors?  Y  N  U  N/A

5. Is the anchorage configuration consistent with plant documentation?  Y  N  U  N/A  *yes PM*

(Note: This question only applies if the item is one of the 50% for which an anchorage configuration verification is required.) *Observed top two connection clips w/ photo shown on SEWS for equipment Q2R18B043-B. bottom two clips are identical to the top two. Also, observed four unistrut bolts which is a typical unistrut*

6. Based on the above anchorage evaluations, is the anchorage free of potentially adverse seismic conditions?  Y  N  U  N/A

*Connection. Additionally observed eight unistrut bolt connections in two adjacent identical power disconnect switch panels which are also identical. Anchorage configuration is validated.*

<sup>1</sup> Enter the equipment class name from Appendix B: Classes of Equipment.

F2-95

Sheet 2 of 3

Status: Y  N  U

**Seismic Walkdown Checklist (SWC)**

Equipment ID No. Q2R18B043 Equip. Class<sup>1</sup> 2

Equipment Description MOV POWER DISCONNECT SWITCH

**Interaction Effects**

7. Are soft targets free from impact by nearby equipment or structures? Y  N  U  N/A

8. Are overhead equipment, distribution systems, ceiling tiles and lighting, and masonry block walls not likely to collapse onto the equipment? Y  N  U  N/A

9. Do attached lines have adequate flexibility to avoid damage? Y  N  U  N/A

10. Based on the above seismic interaction evaluations, is equipment free of potentially adverse seismic interaction effects? Y  N  U

**Other Adverse Conditions**

11. Have you looked for and found no other seismic conditions that could adversely affect the safety functions of the equipment? Y  N  U

**Comments** (Additional pages may be added as necessary) There are no Plant drawings for the anchorage of this wall component. The SQUG SEWS package evaluated the anchorage based on Judgment. The anchorage is not specifically described. However, the anchorage is shown in a picture attached to the SEWS. The configuration of the anchorage in the field was determined to match the configuration from the picture as well as to match the anchorage configuration of other similar components in the area.

Evaluated by: [Signature] Maggie Farah Date: 8/24/12  
[Signature] Ron Miranda 8/24/12



F2-95



F2-96

Sheet 1 of 84 *AD*  
 Status: Y  N  U

**Seismic Walkdown Checklist (SWC)**

Equipment ID No. Q2R21B001D Equip. Class<sup>1</sup> 14

Equipment Description 120V REG PANEL 2F

Location: Bldg. AUXILIARY Floor El. 139 Room, Area 2318

Manufacturer, Model, Etc. (optional but recommended) \_\_\_\_\_

**Instructions for Completing Checklist**

This checklist may be used to document the results of the Seismic Walkdown of an item of equipment on the SWEL. The space below each of the following questions may be used to record the results of judgments and findings. Additional space is provided at the end of this checklist for documenting other comments.

**Anchorage**

1. Is the anchorage configuration verification required (i.e., is the item one of the 50% of SWEL items requiring such verification)?  Y  N  
*Anchorage details are shown on SEWS for Q2R21B001D-4 (120 Reg. Panel 2F)*
2. Is the anchorage free of bent, broken, missing or loose hardware?  Y  N  U  N/A
3. Is the anchorage free of corrosion that is more than mild surface oxidation?  Y  N  U  N/A
4. Is the anchorage free of visible cracks in the concrete near the anchors?  Y  N  U  N/A
5. Is the anchorage configuration consistent with plant documentation?  Y  N  U  N/A  
 (Note: This question only applies if the item is one of the 50% for which an anchorage configuration verification is required.)
6. Based on the above anchorage evaluations, is the anchorage free of potentially adverse seismic conditions?  Y  N  U

<sup>1</sup> Enter the equipment class name from Appendix B: Classes of Equipment.



F296

Sheet 2 of 34 <sup>AT</sup>  
Status: Y  N  U

**Seismic Walkdown Checklist (SWC)**

Equipment ID No. Q2R21B001D Equip. Class' 14

Equipment Description 120V REG PANEL 2F

**Interaction Effects**

7. Are soft targets free from impact by nearby equipment or structures? Y  N  U  N/A

8. Are overhead equipment, distribution systems, ceiling tiles and lighting, and masonry block walls not likely to collapse onto the equipment? Y  N  U  N/A

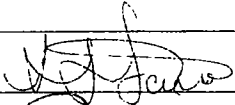
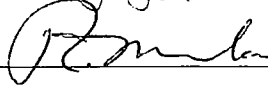
9. Do attached lines have adequate flexibility to avoid damage? Y  N  U  N/A

10. Based on the above seismic interaction evaluations, is equipment free of potentially adverse seismic interaction effects? Y  N  U

**Other Adverse Conditions**

11. Have you looked for and found no other seismic conditions that could adversely affect the safety functions of the equipment? Y  N  U

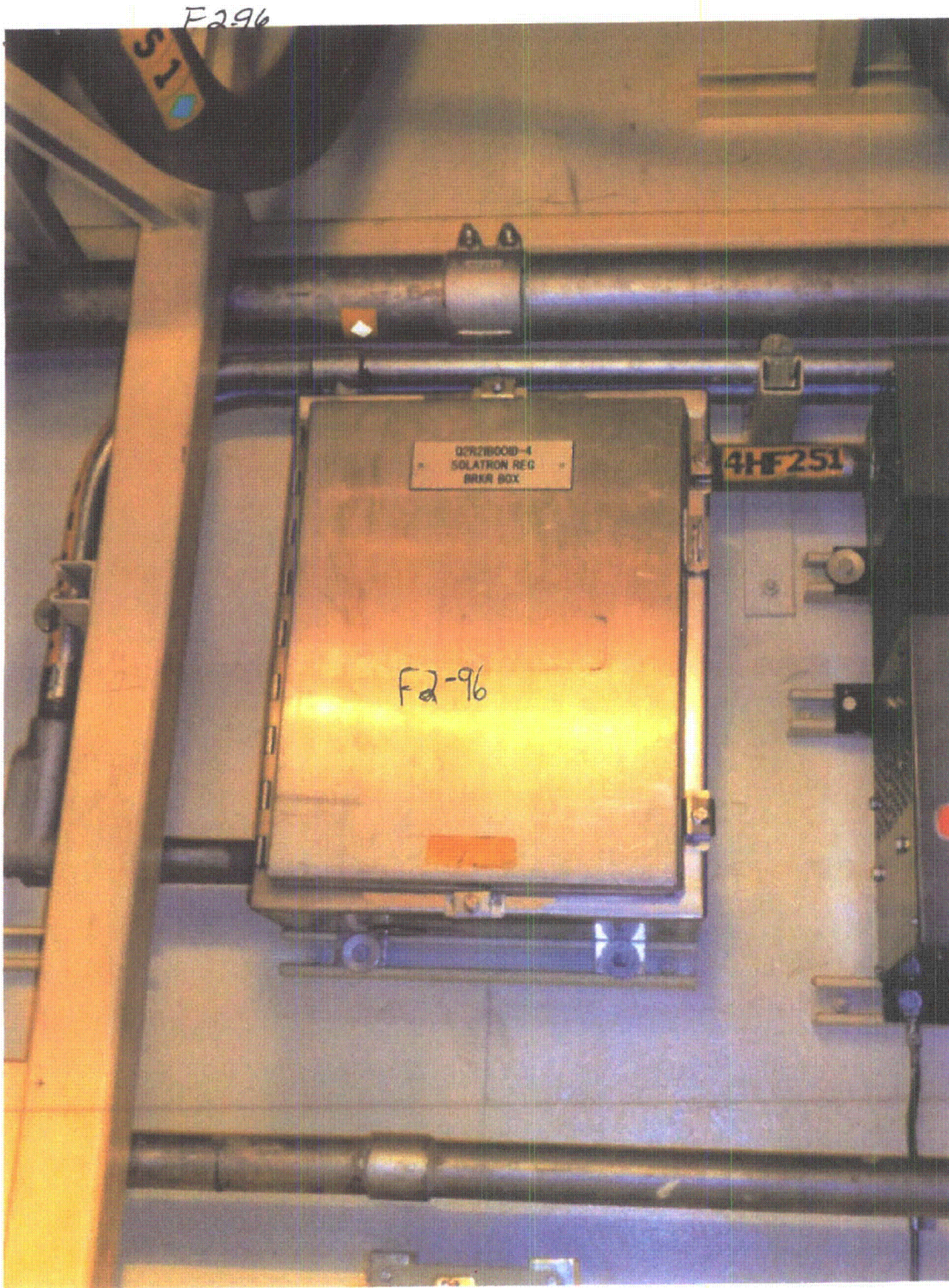
**Comments** (Additional pages may be added as necessary)  
See Component Q2H226001D for AWC.

Evaluated by:  Maggie Farah Date: 8/20/12  
 Ron Miranda 8/28/12



F2-96





FZ-97

Sheet 1 of 5  
Status: Y  N  U  9/10/12

**Seismic Walkdown Checklist (SWC)**

Equipment ID No. Q2R21E009D Equip. Class 16

Equipment Description INVERTER 2D

Location: Bldg. AUXILIARY Floor El. 121 Room, Area 2226

Manufacturer, Model, Etc. (optional but recommended)

**Instructions for Completing Checklist**

This checklist may be used to document the results of the Seismic Walkdown of an item of equipment on the SWEL. The space below each of the following questions may be used to record the results of judgments and findings. Additional space is provided at the end of this checklist for documenting other comments.

**Anchorage**

- 1. Is the anchorage configuration verification required (i.e., is the item one of the 50% of SWEL items requiring such verification)? Y  N
- 2. Is the anchorage free of bent, broken, missing or loose hardware? Y  N  U  N/A
- 3. Is the anchorage free of corrosion that is more than mild surface oxidation? Y  N  U  N/A
- 4. Is the anchorage free of visible cracks in the concrete near the anchors? Y  N  U  N/A
- 5. Is the anchorage configuration consistent with plant documentation? Y  N  U  N/A   
(Note: This question only applies if the item is one of the 50% for which an anchorage configuration verification is required.)
- 6. Based on the above anchorage evaluations, is the anchorage free of potentially adverse seismic conditions? Y  N  U

REF SEWS FOR Q2R21E009D, DATED 6-29-93 = SEWS FOR Q2R21E009A DATED 6-25-95

<sup>1</sup> Enter the equipment class name from Appendix B: Classes of Equipment.



F297

Sheet 2 of 5  
Status: Y  N  U  9/10/12

**Seismic Walkdown Checklist (SWC)**

Equipment ID No. Q2R21E009D Equip. Class: 16

Equipment Description INVERTER 2D

Interaction Effects

7. Are soft targets free from impact by nearby equipment or structures? Y  N  U  N/A

8. Are overhead equipment, distribution systems, ceiling tiles and lighting, and masonry block walls not likely to collapse onto the equipment? Y  N  U  N/A

9. Do attached lines have adequate flexibility to avoid damage? Y  N  U  N/A

10. Based on the above seismic interaction evaluations, is equipment free of potentially adverse seismic interaction effects? Y  N  U

Other Adverse Conditions

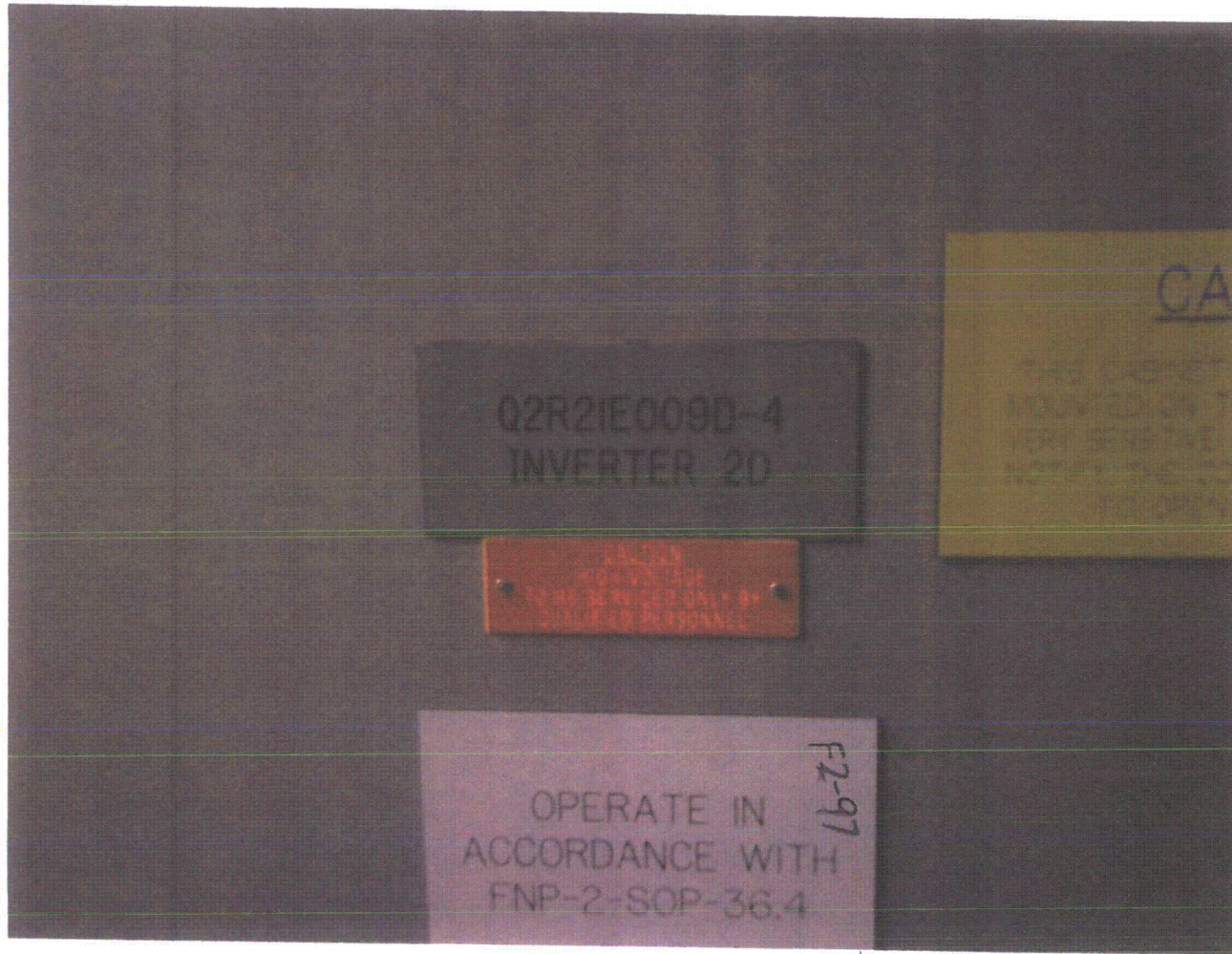
11. Have you looked for and found no other seismic conditions that could adversely affect the safety functions of the equipment? Y  N  U

Comments (Additional pages may be added as necessary)

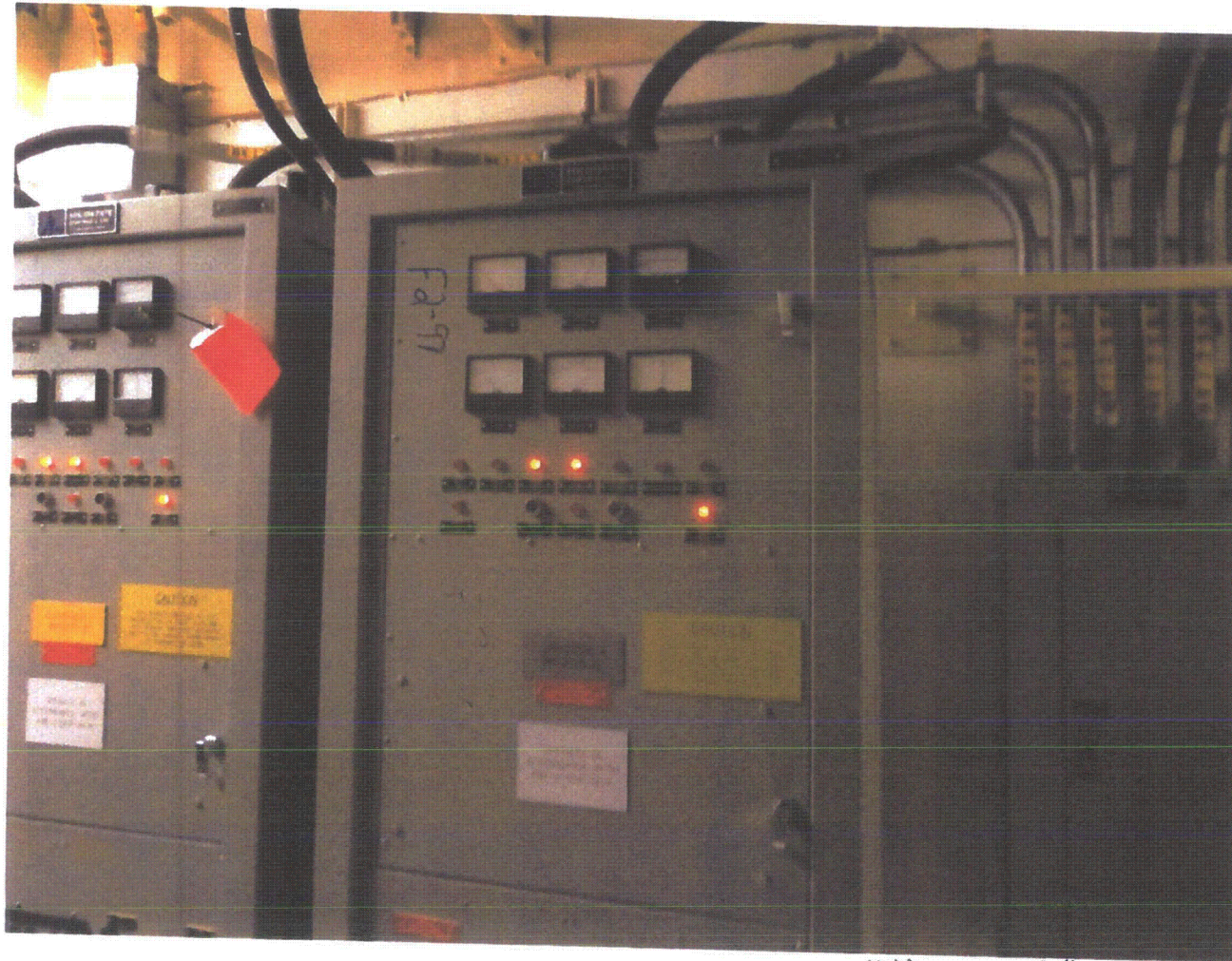
NONE

Evaluated by: P. MIKTOS Paul Miktos Date: 9-10-12

S. YVAN Stephen Yvan 9-10-12







E-2-97

E-2-97





F  
9  
5/6