

Centro Cardiovascular del Este, CSP  
Dr. Edwin Marshall Medina  
NRC License # 52-31241.01

Closeout Survey  
June 7, 2013

Survey Meter used: Ludlum Model 14C  
Probe Used: 44-9 pan probe  
Serial Number: 197689  
Calibration Date: June 7, 2013

Background Reading: 0.02 mR/hr  
Check source reading: 6.0 mR/hr  
Maximum survey reading: 0.02 mR/hr

Radiation survey performed by: David Rhoe

Note: All of the radioactive materials were removed from the area prior to the survey.

1. Counter top & lead bricks, L-block	2. Sink	3. Floor	4. Office floor
5. Camera floor	6. Hallway floor	7. Bathroom sink	8. Bathroom toilet
9. Bathroom floor	10. Desk and chair	11. Stress bike	12. Injection chair
13. Waste container #1	14. Waste container #2	15. Waste container #3	16. IV poles (2)

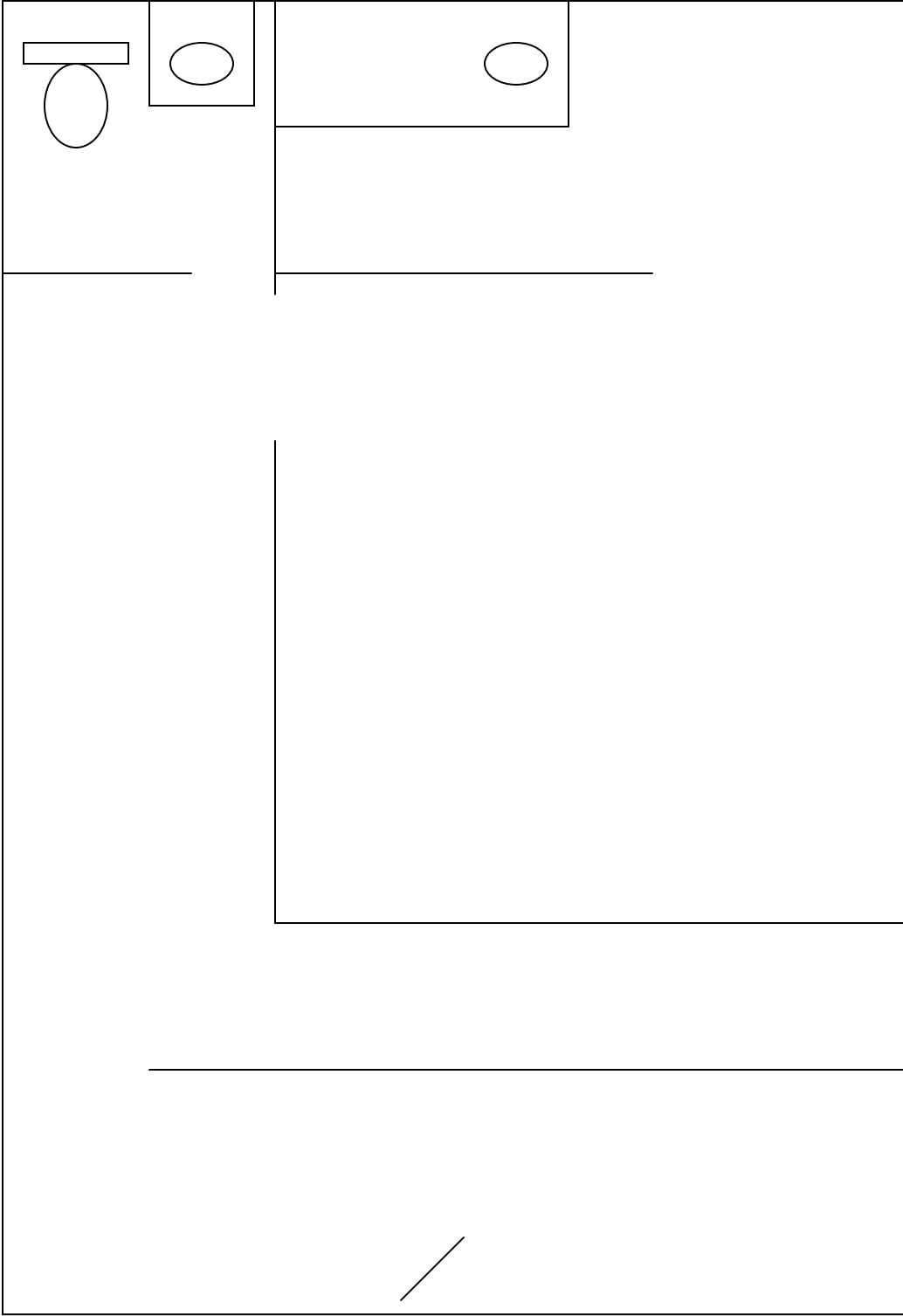
Sources removed: Cs-137 dose calibrator source, Ba-133 dose calibrator source, Co-57 dose calibrator source, camera Co-57 flood source, Cs-137 rod source and one sharps container.

This certifies that there was not radiation contamination present and that all radiation sources were removed.

---

David Rhoe  
Medical/Health Physicist

# Area Diagram



## Gamma Counter

### Efficiency

28% with Cs-137 and 11% with Am-241

Background = 131 cpm (467 dpm)

All wipe counts were less than twice background,  
262 cpm (935 dpm)

### Wipe results:

1. 151 cpm
2. 166 cpm
3. 134 cpm
4. 164 cpm
5. 165 cpm
6. 190 cpm
7. 214 cpm
8. 130 cpm
9. 137 cpm
10. 141 cpm
11. 155 cpm
12. 157 cpm
13. 133 cpm
14. 128 cpm
15. 161 cpm
16. 142 cpm