

## Radiological Survey Sheet

Job Location Pfizer Central Research Gorton 118W/W1999 Page 1  
 Survey Purpose Radiological Assessment Date 4/10/01  
 Performed By Pam Jones (Print) Pam Jones (Sign)

Inst.(1) (Model/SN) Beckman LS 6500 #7069448	Inst.(2) (Model/SN) <u>Lidlum # 103603-2241-2</u> <u>163603</u>	Inst.(3) (Model/SN)
Det. Internal (Model/SN)	Det. <u>Lidlum 4368</u> (Model/SN) <u>PR149613</u>	Det. (Model/SN)
Eff. See LSC Printout	Eff. <u>~ 8% CI4</u>	Eff.
Type rad. $\beta$	Type rad. <u><math>\beta</math></u>	Type rad.
Bkgd. See LSC Printout	Bkgd. <u>200 cpm</u>	Bkgd.
Cal. Due: 12/01	Cal. Due <u>1/20/02</u>	Cal. due

No.	Time	Location	Inst. Used	Total Activity (dpm/100 cm <sup>2</sup> )
1.	1030	wall	1	See attached LSC Printout
2.		"	1	
3.		"	1	
4.		"	1	
5.		"	1	
6.		floor	1	
7.		"	1	
8.		"	1	
9.		"	1	
10.		"	1	
11.		"	1	
12.		"	1	
13.		"	1	
14.		outside cabinet	1	
15.		top shelf	1	
16.		bot. shelf	1	
17.		out. cab	1	
18.	✓	top shelf	1	

Radiological Survey Continuation Sheet

Page 2 of 10  
 Date 4/10/01

No.	Time	Location	Inst. Used	Total Activity (dpm/100 cm <sup>2</sup> )
19		Shelf		
20		bot. shelf	1	See attached LSC Printout
21		out. cab.	1	
22		top shelf	1	
23		bot. shelf	1	
24		out. cab	1	
25		top shelf	1	
26		shelf	1	
27		bot. shelf	1	
28		metal shelves	1	
29		out. drawers	1	
30		top drawer	1	
31		drawer	1	
32		bot. drawer	1	
33		out. drawers	1	
34		top drawer	1	
35		drawer	1	
36		bot. drawer	1	
37		cabinet piece	1	
38		outside top of freezer	1	
39		freezer door	1	
40		top shelf	1	
41		shelf	1	
42		"	1	
43		"	1	
44		bot shelf	1	
45		freezer door	1	
46		top shelf	1	

Radiological Survey Continuation Sheet

Page 3 of 10  
 Date 4/10/01

No.	Time	Location	Inst. Used	Total Activity (dpm/100 cm <sup>2</sup> )
47		shelf		
48		"	1	See attached LSC Printout
49		"	1	
50		bot. shelf	1	
51		freezer door	1	
52		top shelf	1	
53		shelf	1	
54		"	1	
55		"	1	
56		bot. shelf	1	
57		side of freezer	1	
58		metal shelves	1	
59		inside freezer door	1	
60		front side of fridge	1	
61		left	1	
62		rear	1	
63		right	1	
64		top	1	
65		metal shelf	1	
66		floor	1	
67		"	1	
68		"	1	
69		"	1	
70		"	1	
71		"	1	
72		"	1	
73		"	1	
74	✓	"	1	

Radiological Survey Continuation Sheet

Page 4 of 10

Date 4/10/01

No.	Time	Location	Inst. Used	Total Activity (dpm/100 cm <sup>2</sup> )
75		floor		
76		"	1	See attached LSC Printout
77		wall	1	
78		door	1	
79		wall	1	
80		"	1	
81		floor & wall	1	
82		"	1	
83		"	1	
84		"	1	
85		"	1	
86		"	1	
87		out. cabinet	1	
88		top shelf	1	
89		shelf	1	
90		bot. shelf	1	
91		out. cab	1	
92		top shelf	1	
93		shelf	1	
94		bot. shelf	1	
95		out. cab.	1	
96		top shelf	1	
97		shelf	1	
98		bot. shelf	1	
99		out. cab	1	
100		top shelf	1	
101		shelf	1	
102	↓	bot. shelf	1	

Radiological Survey Continuation Sheet

Page 5 of 10  
 Date 4/10/01

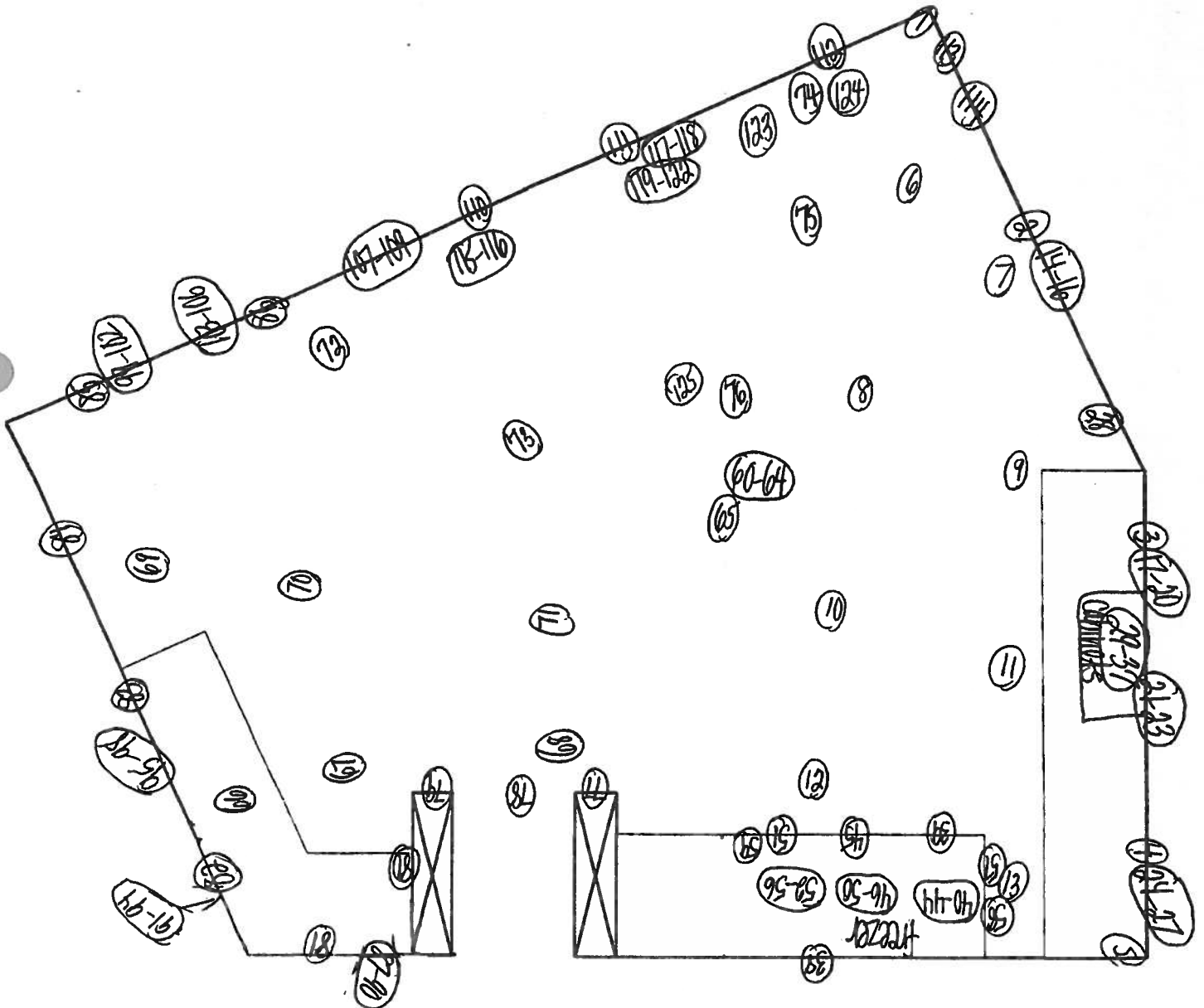
No.	Time	Location	Inst. Used	Total Activity (dpm/100 cm <sup>2</sup> )
103		Mt. Cab		
104		top shelf	1	See attached LSC Printout
105		shelf	1	
106		bot. shelf	1	
107		ultracentrifuge left	1	
108		" right	1	
109		" top	1	
110		wall	1	
111		"	1	
112		"	1	
113		"	1	
114		"	1	
115		dry ice container outside	1	
116		" inside	1	
117		speedvac concentrator outside	1	
118		" inside	1	
119		left top freezer	1	
120		left front	1	
121		right top	1	
122		right front	1	
123		nitrogen tank	1	
124		fire extinguisher	1	
125		wheel bracket	1	
126			1	
127			1	
128			1	
129			1	
130			1	

# Bld. 118W Room W999

Page 6 of 10

Date: 4/10/01

O = wipe location



Surveyed 100% of all lower surfaces using instrument #2.  
All areas were noted to be at a level of normal background.

ID: EQUIPMENT SURVEY  
 USER: 1 EQUIPMENT SURVEY  
 10 APR 2001 11:04

PRESET TIME: 1.00  
 DATA CALC: OFF YES SAMPLE REPEATS: 1 PRINTER: :EDIT  
 COUNT BLANK: YES 100% NO REPLICATES: 1 RS232 :EDIT  
 TWO PHASE: NO 900% YES CYCLE REPEATS: 1  
 SCINTILLATOR: LIQUID LUMEX: YES LOW SAMPLE REQ: 0  
 LOW LEVEL: 80 HALF LIFE CORRECTION DATE: none

ISOTOPE 1: 3H XERROR: 2.00 FACTOR: 1.0000 BKG. SUB: 0  
 ISOTOPE 2: 14C XERROR: 2.00 FACTOR: 1.0000 BKG. SUB: 0  
 WIDE OPEN WINDOW XERROR: 0.00 FACTOR: 1.0000 BKG. SUB: 0

BACKGROUND QUENCH CURVE: Off COLOR QUENCH CORRECTION: Off  
 Quench Limits Low: 13.698 High: 306.34

SAM NO	H#	3H CPM	14C CPM	WIDE CPM	3H DPM	14C DPM	LUMEX %	
B1	74.8	20.00	7.00	35.00	38.40	9.03	5.40	
		Blank Average DPM for		3H :	38.40	COEF. OF VAR:		0.000
		Blank Average DPM for		14C :	9.03	COEF. OF VAR:		0.000
1	80.4	21.00	12.00	44.00	0.59	6.70	6.77	
2	78.8	19.00	10.00	36.00	-2.96	4.05	6.30	
3	88.4	16.00	6.00	31.00	-5.78	-1.23	18.06	
4	100.3	15.00	6.00	38.00	-6.01	-1.18	16.76	
5	76.6	18.00	10.00	37.00	-5.43	4.05	6.48	
6	88.9	16.00	4.00	25.00	-4.59	-3.93	10.64	
7	121.9	11.00	8.00	31.00	-13.77	1.71	9.35	
8	90.6	31.00	10.00	61.00	26.44	3.90	5.32	
9	94.5	15.00	10.00	39.00	-9.30	4.21	6.81	
10	84.9	27.00	7.00	42.00	17.35	-0.09	7.75	
11	93.0	12.00	13.00	34.00	-18.11	8.30	13.84	
12	87.7	12.00	5.00	28.00	-14.28	-2.51	11.00	
13	100.5	14.00	10.00	33.00	-10.72	4.26	8.25	
14	85.0	23.00	13.00	50.00	5.35	8.04	4.65	
15	81.0	20.00	7.00	39.00	1.15	0.02	6.71	
16	88.1	18.00	7.00	31.00	-1.89	0.08	7.16	
17	82.3	18.00	4.00	34.00	-1.35	-3.97	5.79	
18	79.3	15.00	11.00	31.00	-11.96	5.46	6.84	
19	82.5	19.00	7.00	35.00	-0.73	0.04	6.45	
20	81.3	20.00	3.00	31.00	3.31	-5.34	11.57	
21	75.5	22.00	8.00	39.00	3.83	1.31	3.04	
22	79.4	23.00	10.00	40.00	5.72	3.98	6.56	
23	78.2	12.00	9.00	30.00	-17.45	2.82	4.41	
24	76.8	12.00	6.00	30.00	-16.06	-1.20	7.22	
25	76.5	18.00	11.00	35.00	-5.96	5.39	7.90	
26	79.7	19.00	10.00	36.00	-2.80	4.05	5.14	
27	84.5	9.00	7.00	27.00	-22.34	0.22	7.19	
28	111.8	15.00	16.00	41.00	-10.09	12.50	4.26	
29	80.2	17.00	10.00	37.00	-7.01	4.09	4.56	
30	93.6	14.00	12.00	37.00	-12.86	6.92	14.43	
31	79.1	12.00	13.00	29.00	-19.44	8.18	6.09	
32	83.6	21.00	8.00	43.00	3.32	1.35	8.68	
33	81.6	13.00	7.00	32.00	-13.90	0.14	6.08	
34	88.4	19.00	9.00	40.00	-0.69	2.75	4.93	
35	90.2	26.00	9.00	41.00	15.52	2.64	6.58	
36	86.8	19.00	8.00	42.00	-0.44	1.40	7.15	

SAM NO	H#	3H CPM	14C CPM	WIDE CPM	3H DPM	14C DPM	LUMEX %
37	84.2	19.00	11.00	36.00	-2.54	5.42	4.01
	88.7	13.00	7.00	29.00	-13.01	0.17	6.94
	78.9	22.00	16.00	51.00	0.37	12.03	2.30
40	80.4	14.00	5.00	31.00	-10.84	-2.56	4.49
41	80.7	16.00	13.00	34.00	-10.66	8.13	7.05
42	88.6	13.00	11.00	33.00	-15.21	5.55	4.32
43	86.0	17.00	10.00	40.00	-6.12	4.12	4.40
44	92.1	18.00	7.00	37.00	-1.12	0.09	3.66
45	81.7	13.00	11.00	35.00	-15.99	5.51	7.39
46	83.1	22.00	3.00	31.00	8.06	-5.38	5.49
47	77.9	21.00	9.00	42.00	1.67	2.67	5.19
48	82.9	16.00	13.00	37.00	-10.38	8.15	4.78
49	88.3	27.00	6.00	41.00	18.88	-1.43	4.46
50	94.8	14.00	13.00	32.00	-13.27	8.28	8.30
51	79.0	21.00	13.00	39.00	-0.19	8.03	6.60
52	85.0	15.00	14.00	36.00	-12.83	9.53	8.22
53	86.8	17.00	12.00	40.00	-7.07	6.82	5.17
54	85.3	21.00	8.00	35.00	3.67	1.36	3.08



55	86.0	21.00	5.00	36.00	5.44	-2.67	4.56
56	93.4	24.00	7.00	40.00	12.98	-0.02	10.69
57	83.7	24.00	13.00	46.00	7.26	8.02	3.27
58	94.4	10.00	9.00	28.00	-20.33	2.95	10.88
59	84.7	16.00	10.00	34.00	-8.52	4.13	9.17
60	84.8	20.00	6.00	30.00	2.45	-1.31	6.78
61	87.5	19.00	5.00	35.00	1.32	-2.63	9.62
62	87.6	18.00	11.00	39.00	-4.16	5.48	3.17
63	88.8	16.00	11.00	43.00	-8.24	3.20	3.17
64	88.7	24.00	8.00	32.00	11.24	1.32	2.17
65	84.1	20.00	10.00	30.00	11.67	4.22	2.17
66	87.7	20.00	12.00	32.00	11.90	4.87	2.17
67	87.7	20.00	10.00	30.00	0.36	4.14	6.45
68	87.7	20.00	10.00	30.00	-2.39	1.49	15.55
69	87.7	20.00	10.00	30.00	3.53	4.14	8.23
70	87.7	20.00	10.00	30.00	-0.33	6.86	10.84
71	98.6	19.00	12.00	40.00	0.14	2.77	10.40
72	92.5	19.00	9.00	36.00	-6.25	4.21	9.61
73	98.7	16.00	10.00	39.00	16.29	8.10	4.82
74	100.5	26.00	13.00	52.00	-7.41	11.08	13.39
75	109.0	16.00	15.00	37.00	-15.98	1.64	14.37
76	106.5	11.00	8.00	23.00	-17.73	4.18	15.27
77	80.7	12.00	10.00	34.00	3.76	0.01	5.60
78	83.1	21.00	7.00	36.00	-6.28	0.11	9.68
79	88.7	16.00	7.00	31.00	-4.77	5.44	10.02
80	84.0	18.00	11.00	37.00	1.65	10.85	4.33
81	93.9	21.00	15.00	50.00	-10.23	6.92	7.58
82	95.6	15.00	12.00	44.00	12.08	4.23	10.88
83	121.6	21.00	10.00	44.00	-5.47	0.19	5.83
84	106.4	15.00	7.00	33.00	-7.75	0.22	6.75
85	107.5	14.00	7.00	31.00	-12.10	0.36	5.53
86	127.7	11.00	7.00	27.00	9.38	1.30	5.02
87	81.4	24.00	8.00	42.00	-15.30	5.55	3.44
88	87.8	13.00	11.00	36.00	-4.47	5.45	4.03
89	85.8	18.00	11.00	38.00	-5.32	4.15	3.22
90	90.7	17.00	10.00	38.00	-10.00	13.52	7.55
91	85.1	17.00	17.00	41.00	1.64	2.74	5.85
92	88.8	20.00	9.00	40.00	1.40	8.10	4.45
93	87.3	21.00	13.00	42.00	-17.65	0.20	10.43
94	87.3	11.00	7.00	28.00			

SAM NO	H#	3H CPM	14C CPM	WIDE CPM	3H DPM	14C DPM	LUMEX %
85.6	85.6	22.00	10.00	42.00	4.88	4.03	3.95
85.2	85.2	23.00	11.00	44.00	6.47	5.36	2.88
88.1	88.1	19.00	7.00	41.00	0.35	0.06	4.46
93.8	93.8	19.00	14.00	41.00	-2.42	9.53	8.51
85.6	99	19.00	5.00	34.00	0.93	-2.64	4.04
90.6	100	15.00	12.00	35.00	-10.99	6.88	6.40
90.0	101	14.00	5.00	28.00	-9.47	-2.54	11.15
91.2	102	20.00	6.00	32.00	3.81	-1.30	9.63
86.9	103	22.00	13.00	45.00	3.54	8.07	4.39
86.0	104	20.00	9.00	40.00	1.07	2.72	5.06
90.7	105	18.00	11.00	38.00	-3.60	5.48	5.38
91.2	106	13.00	13.00	33.00	-16.01	8.27	6.71
97.6	107	24.00	10.00	45.00	12.42	4.06	10.86
106.8	108	15.00	9.00	35.00	-6.61	2.92	13.95
90.9	109	17.00	9.00	33.00	-4.74	2.80	7.07
98.8	110	19.00	13.00	38.00	-0.86	8.22	7.03
127.9	111	11.00	9.00	33.00	-13.49	3.12	4.26
104.1	112	16.00	7.00	35.00	-3.46	0.17	5.92
90.0	113	20.00	8.00	42.00	2.45	1.40	3.95
92.0	114	19.00	10.00	39.00	-0.53	4.12	4.53
86.9	115	11.00	8.00	27.00	-18.24	1.54	5.44
99.7	116	16.00	8.00	34.00	-4.90	1.51	11.39
91.6	117	17.00	13.00	36.00	-6.84	8.20	6.39
93.1	118	20.00	14.00	41.00	-0.25	9.51	6.99
96.3	119	18.00	12.00	43.00	-3.14	6.87	4.72
89.6	120	14.00	14.00	42.00	-14.49	9.58	3.61
99.4	121	22.00	10.00	35.00	8.16	4.10	3.11
88.3	122	19.00	11.00	44.00	-1.80	5.45	7.60
159.2	123	18.00	14.00	47.00	13.75	10.15	23.46
94.7	124	14.00	11.00	37.00	-6.95	4.19	8.03
93.1	125	11.00	11.00	43.00	5.47	6.77	5.06