

# Radiological Survey Sheet

Job Location Pfizer, Inc. Groton, Ct. 06340 118w/W102 Page 1 20  
 Survey Purpose ES Radiologic Survey of Equipment LAB DEcomm. Date 12-10-12  
 Performed by E. GAILOR E. Gailor  
 (Print) (Sign)

|                               |                                |                                |                           |                                  |
|-------------------------------|--------------------------------|--------------------------------|---------------------------|----------------------------------|
| <b>Instrument (Model/S/N)</b> | Packard Tri-Carb<br>S/N 431521 | Packard Tri-Carb<br>S/N 431520 | Ludlum 2241-2<br>163603   | Wallac Model 1409<br>S/N 4061042 |
| <b>Det. (Model/SN)</b>        | Internal                       | Internal                       | Ludlum 43-68<br>PR 149613 | Internal                         |
| <b>Type Rad.</b>              | β                              | β                              | β                         | β                                |
| <b>Cal. Due:</b>              | 03/05/2013                     | 03/05/2013                     | 04/17/2013                | 09/15/2012                       |
| <b>Check Instruments Used</b> | ✓                              |                                | ✓                         |                                  |

| No. | Time | Locations  | See attached LSC printout for Total Activity (cpm/100 cm <sup>2</sup> ) |
|-----|------|------------|---|
| 1.  | 0930 | BACKGROUND |   |
| 2.  |      | door       |   |
| 3.  |      | FLOOR      |   |
| 4.  |      | UPPER WALL |   |
| 5.  |      | LOWER "    |   |
| 6.  |      | TOP SHELF  |   |
| 7.  |      | 2ND "      |   |
| 8.  |      | 3RD "      |   |
| 9.  |      | 4TH "      |   |
| 10. |      | 5TH "      |   |
| 11. |      | TOP "      |   |
| 12. |      | 2ND "      |   |
| 13. |      | 3RD "      |   |
| 14. |      | TOP "      |   |
| 15. |      | 2ND "      |   |
| 16. |      | 3RD "      |   |
| 17. |      | 4TH "      |   |
| 18. |      | WALL       |   |

# Radiological Survey Continuation Sheet

Page 2 of 20

Date 12-10-12

| No. | Time | Locations  | See attached LSC printout for Total Activity (cpm/100 cm <sup>2</sup> ) |
|-----|------|------------|---|
| 19  | 0930 | LEFT TOP   | dwr   |
| 20  |      | "          | 2nd "   |
| 21  |      | RIGHT TOP  | "   |
| 22  |      | "          | 2nd "   |
| 23  |      | "          | 3rd "   |
| 24  |      | 1ST LARGE  | dwr   |
| 25  |      | 2nd "      | "   |
| 26  |      | TOP        | dwr   |
| 27  |      | 2nd        | "   |
| 28  |      | 3rd        | "   |
| 29  |      | 4th        | "   |
| 30  |      | 5th        | "   |
| 31  |      | TOP        | "   |
| 32  |      | 2nd        | "   |
| 33  |      | 3rd        | "   |
| 34  |      | 4th        | "   |
| 35  |      | 5th        | "   |
| 36  |      | BENCH      |   |
| 37  |      | "          |   |
| 38  |      | "          |   |
| 39  |      | "          |   |
| 40  |      |            |   |
| 41  |      | CAB DOORS  |   |
| 42  |      | " TOP SURF |   |
| 43  |      | " 2nd "    |   |
| 44  |      | " 3rd "    |   |
| 45  |      | " 4th "    |   |
|     |      | TO SHELF   |   |

# Radiological Survey Continuation Sheet

Page 3 of 20

Date 12-10-12

| No. | Time | Locations    | See attached LSC printout for Total Activity (cpm/100 cm <sup>2</sup> ) |
|-----|------|--------------|---|
| 46  | 0730 | 2ND SHELF    |   |
| 47  |      | 3RD "        |   |
| 48  |      | 4TH "        |   |
| 49  |      | UPPER WALL   |   |
| 50  |      | LOWER "      |   |
| 51  |      | WALL & LEDGE |   |
| 52  |      | " " "        |   |
| 53  |      | SHELF        |   |
| 54  |      | DESK         |   |
| 55  |      | TOP DWOR     |   |
| 56  |      | 2ND "        |   |
| 57  |      | 3RD "        |   |
| 58  |      | dwr          |   |
| 59  |      | TOP SHELF    |   |
| 60  |      | 2ND "        |   |
| 61  |      | 3RD "        |   |
| 62  |      | TOP "        |   |
| 63  |      | 2ND "        |   |
| 64  |      | 3RD "        |   |
| 65  |      | TOP dwr      |   |
| 66  |      | 2ND "        |   |
| 67  |      | CAB DOOR     |   |
| 68  |      | " TOP SHELF  |   |
| 69  |      | " BOTTOM "   |   |
| 70  |      | dwr          |   |
| 71  |      | TOP LEFT dwr |   |
| 72  | ✓    | 2ND " "      |   |

# Radiological Survey Continuation Sheet

Page 4 of 20

Date 12-10-12

| No. | Time | Locations            | See attached LSC printout for Total Activity (cpm/100 cm <sup>2</sup> ) |
|-----|------|----------------------|---|
| 73  | 0930 | TOP RIGHT dwr        |   |
| 74  |      | 2nd " "              |   |
| 75  |      | 1ST LARGE "          |   |
| 76  |      | 2nd " "              |   |
| 77  |      | BENCH                |   |
| 78  |      | " & CUP              |   |
| 79  |      | " " "                |   |
| 80  |      | "                    |   |
| 81  |      | FLOOR                |   |
| 82  |      | "                    |   |
| 83  |      | "                    |   |
| 84  |      | "                    |   |
| 85  |      | "                    |   |
| 86  |      | "                    |   |
| 87  |      | "                    |   |
| 88  |      | HOOD RIGHT side      |   |
| 89  |      | " " BACK             |   |
| 90  |      | " LEFT "             |   |
| 91  |      | " " SIDE             |   |
| 92  |      | " RIGHT BOTTOM & CUP |   |
| 93  |      | " middle "           |   |
| 94  |      | " LEFT "             |   |
| 95  |      | " HOOD SASH          |   |
| 96  |      | " LIP                |   |
| 97  |      | CAB DOORS            |   |
| 98  |      | " INSIDE             |   |
| 99  | ✓    | " DOORS              |   |
|     |      | " INSIDE             |   |

# Radiological Survey Continuation Sheet

Page 5 of 20

Date 12-10-12

| No. | Time | Locations    | See attached LSC printout for Total Activity (cpm/100 cm <sup>2</sup> ) |
|-----|------|--------------|---|
| 100 | 0930 | BENCH        |   |
| 101 |      | "            |   |
| 102 |      | TOP dWR      |   |
| 103 |      | 2nd "        |   |
| 104 |      | 3RD "        |   |
| 105 |      | 4TH "        |   |
| 106 |      | 5TH "        |   |
| 107 |      | PEG Bd       |   |
| 108 |      | SINK AREA    |   |
| 109 |      | BENCH        |   |
| 110 |      | CAB DOORS    |   |
| 111 |      | " TOP SHELF  |   |
| 112 |      | " 2ND "      |   |
| 113 |      | " 3RD "      |   |
| 114 |      | " 4TH "      |   |
| 115 |      | " DOORS      |   |
| 116 |      | " INSIDE     |   |
| 117 |      | TOP dWR      |   |
| 118 |      | 2ND "        |   |
| 119 |      | 3RD "        |   |
| 120 |      | 4TH "        |   |
| 121 |      | FLOOR        |   |
| 122 |      | "            |   |
| 123 |      | "            |   |
| 124 |      | "            |   |
| 125 |      | "            |   |
| 126 | ✓    | TOP LEFT dWR |   |
|     |      | 2ND " "      |   |

# Radiological Survey Continuation Sheet

Page 6 of 20

Date 12-10-12

| No. | Time | Locations     | See attached LSC printout for Total Activity (cpm/100 cm <sup>2</sup> ) |
|-----|------|---------------|---|
| 127 | 0930 | TOP RIGHT dWR |   |
| 128 | ↑    | " LEFT ✓      |   |
| 129 |      | 1ST LARGE "   |   |
| 130 |      | 2ND " ✓       |   |
| 131 |      | TOP LEFT ✓    |   |
| 132 |      | 2ND " ✓       |   |
| 133 |      | TOP RIGHT "   |   |
| 134 |      | 2ND " "       |   |
| 135 |      | 3RD " ✓       |   |
| 136 |      | 1ST LARGE ✓   |   |
| 137 |      | 2ND " "       |   |
| 138 |      | dWR           |   |
| 139 |      | TOP dWR       |   |
| 140 |      | 2ND "         |   |
| 141 |      | CAB door      |   |
| 142 |      | " INSIDE      |   |
| 143 |      | dWR           |   |
| 144 |      | TOP "         |   |
| 145 |      | 2ND "         |   |
| 146 |      | 3RD "         |   |
| 147 |      | TOP SHELF     |   |
| 148 |      | 2ND "         |   |
| 149 |      | 3RD "         |   |
| 150 |      | 4TH " ✓       |   |
| 151 |      | BENCH         |   |
| 152 |      | "             |   |
| 153 | ✓    | "             |   |

# Radiological Survey Continuation Sheet

Page 7 of 20

Date 12-10-12

| No. | Time | Locations   | See attached LSC printout for Total Activity (cpm/100 cm <sup>2</sup> ) |
|-----|------|-------------|---|
| 154 | 0930 | SHelf       |   |
| 155 |      | DESK        |   |
| 156 |      | CAB DOOR    |   |
| 157 |      | " TOP SHelf |   |
| 158 |      | " 2ND "     |   |
| 159 |      | " 3RD "     |   |
| 160 |      | CAB DOORS   |   |
| 161 |      | " TOP SHelf |   |
| 162 |      | " 2ND "     |   |
| 163 |      | " 3RD "     |   |
| 164 |      | " 4TH "     |   |
| 165 |      | TOP DWOR    |   |
| 166 |      | 2ND "       |   |
| 167 |      | 3RD "       |   |
| 168 |      | DWOR        |   |
| 169 |      | TOP DWOR    |   |
| 170 |      | 2ND "       |   |
| 171 |      | CAB DOOR    |   |
| 172 |      | " TOP SHelf |   |
| 173 |      | " BOTTOM "  |   |
| 174 |      | DWOR        |   |
| 175 |      | TOP DWOR    |   |
| 176 |      | 2ND "       |   |
| 177 |      | 3RD "       |   |
| 178 |      | 4TH "       |   |
| 179 |      | TOP "       |   |
| 180 |      | 2ND "       |   |

# Radiological Survey Continuation Sheet

Page 8 of 20

Date 12-10-12

| No. | Time | Locations          | See attached LSC printout for Total Activity (cpm/100 cm <sup>2</sup> ) |
|-----|------|--------------------|---|
| 181 | 0930 | 3RD dWR            |   |
| 182 |      | 4TH "              |   |
| 183 |      | TOP SHELF          |   |
| 184 |      | 2ND "              |   |
| 185 |      | 3RD "              |   |
| 186 |      | TOP "              |   |
| 187 |      | 2ND "              |   |
| 188 |      | 3RD "              |   |
| 189 |      | SHELF              |   |
| 190 |      | DESK               |   |
| 191 |      | BENCH              |   |
| 192 |      | "                  |   |
| 193 |      | " & CUP            |   |
| 194 |      | " "                |   |
| 195 |      | "                  |   |
| 196 |      | "                  |   |
| 197 |      | FLOOR              |   |
| 198 |      | "                  |   |
| 199 |      | LEDGE & LOWER WALL |   |
| 200 |      | FLOOR              |   |
| 201 |      | "                  |   |
| 202 |      | "                  |   |
| 203 |      | "                  |   |
| 204 |      | "                  |   |
| 205 |      | TOP dWR            |   |
| 206 |      | 2ND "              |   |
| 207 | ✓    | 3RD "              |   |



# Radiological Survey Continuation Sheet

Page 9 of 20

Date 12-10-12

| No. | Time | Locations  | See attached LSC printout for Total Activity (cpm/100 cm <sup>2</sup> ) |
|-----|------|------------|---|
| 208 | 0930 | 4TH dwr    |   |
| 209 |      | 5TH "      |   |
| 210 |      | TOP "      |   |
| 211 |      | 2ND "      |   |
| 212 |      | 3RD "      |   |
| 213 |      | 4TH "      |   |
| 214 |      | 5TH "      |   |
| 215 |      | UPPER wall |   |
| 216 |      | LOWER "    |   |
| 217 |      | UPPER "    |   |
| 218 |      | LOWER "    |   |
| 219 |      | FLOOR      |   |
| 220 |      | "          |   |
| 221 |      | "          |   |
| 222 |      | "          |   |
| 223 |      | TOP dwr    |   |
| 224 |      | 2ND "      |   |
| 225 |      | 3RD "      |   |
| 226 |      | 4TH "      |   |
| 227 |      | TOP "      |   |
| 228 |      | 2ND "      |   |
| 229 |      | 3RD "      |   |
| 230 |      | 4TH "      |   |
| 231 |      | dwr        |   |
| 232 |      | TOP "      |   |
| 233 |      | 2ND "      |   |
| 234 | ✓    | CAD door   |   |

# Radiological Survey Continuation Sheet

Page 10 of 20

Date 12-10-12

| No. | Time | Locations     | See attached LSC printout for Total Activity (cpm/100 cm <sup>2</sup> ) |
|-----|------|---------------|---|
| 235 | 093  | CAB TOP SHELF |   |
| 236 |      | " BOTTOM "    |   |
| 237 |      | dwr           |   |
| 238 |      | TOP dwr       |   |
| 239 |      | 2ND "         |   |
| 240 |      | 3RD "         |   |
| 241 |      | TOP SHELF     |   |
| 242 |      | 2ND "         |   |
| 243 |      | 3RD "         |   |
| 244 |      | 4TH "         |   |
| 245 |      | SHELF         |   |
| 246 |      | DESK          |   |
| 247 |      | BENCH         |   |
| 248 |      | "             |   |
| 249 |      | "             |   |
| 250 |      | "             |   |
| 251 |      | UPPER WALL    |   |
| 252 |      | LOWER "       |   |
| 253 |      | TOP SHELF     |   |
| 254 |      | 2ND "         |   |
| 255 |      | 3RD "         |   |
| 256 |      | BENCH         |   |
| 257 |      | "             |   |
| 258 |      | LEFT TOP dwr  |   |
| 259 |      | " MIDDLE "    |   |
| 260 |      | " BOTTOM "    |   |
| 261 | ✓    | RIGHT TOP "   |   |

# Radiological Survey Continuation Sheet

Page 11 of 20

Date 12-10-12

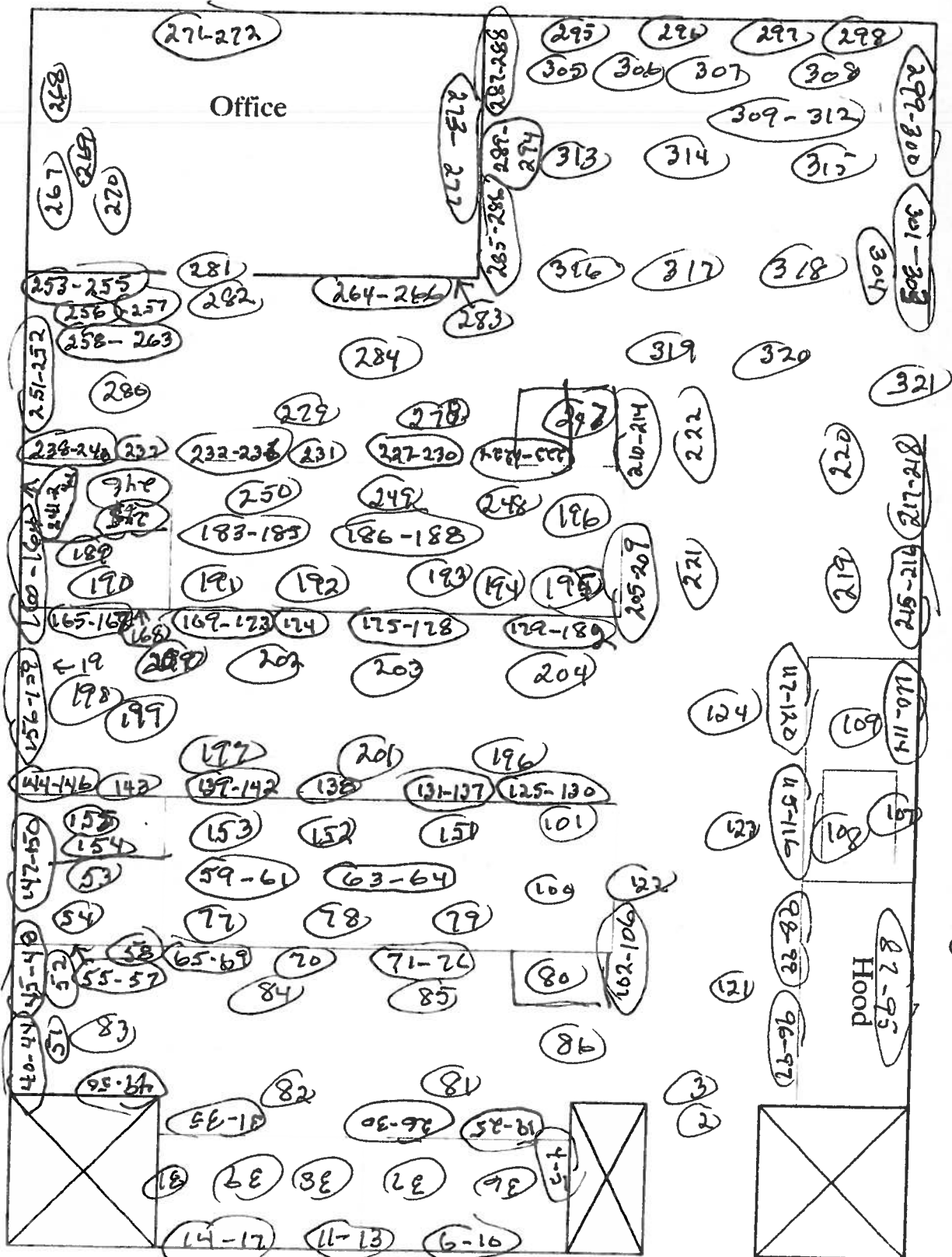
| No. | Time | Locations        | See attached LSC printout for Total Activity (cpm/100 cm <sup>2</sup> ) |
|-----|------|------------------|---|
| 262 | 0930 | RIGHT middle dwr |   |
| 263 |      | " BOTTOM "       |   |
| 264 |      | TABLE TOP        |   |
| 265 |      | " "              |   |
| 266 |      | " dwr            |   |
| 267 |      | LEFT SHELF       |   |
| 268 |      | RIGHT "          |   |
| 269 |      | DESK             |   |
| 270 |      | DESK dwr         |   |
| 271 |      | "                |   |
| 272 |      | " dwr            |   |
| 273 |      | TOP SHELF        |   |
| 274 |      | MIDDLE "         |   |
| 275 |      | BOTTOM "         |   |
| 276 |      | LEFT dwr         |   |
| 277 |      | RIGHT "          |   |
| 278 |      | FLOOR            |   |
| 279 |      | "                |   |
| 280 |      | "                |   |
| 281 |      | door             |   |
| 282 |      | FLOOR            |   |
| 283 |      | WINDOW           |   |
| 284 |      | FLOOR            |   |
| 285 |      | UPPER wall       |   |
| 286 |      | LOWER "          |   |
| 287 |      | UPPER "          |   |
| 288 | ✓    | LOWER "          |   |

# Radiological Survey Continuation Sheet

Page <sup>12</sup>~~8~~ of 20  
 Date 12-10-12

| No. | Time | Locations          | See attached LSC printout for Total Activity (cpm/100 cm <sup>2</sup> ) |
|-----|------|--------------------|---|
| 289 | 0930 | CAB TOP            |   |
| 290 |      | " " dwr            |   |
| 291 |      | " 2ND "            |   |
| 292 |      | " 3RD "            |   |
| 293 |      | " 4TH "            |   |
| 294 |      | " 5TH "            |   |
| 295 |      | LEDGE & LOWER WALL |   |
| 296 |      | " " " "            |   |
| 297 |      | " " " "            |   |
| 298 |      | " " " "            |   |
| 299 |      | UPPER WALL         |   |
| 300 |      | LOWER "            |   |
| 301 |      | CAB DOORS          |   |
| 302 |      | " TOP SHELF        |   |
| 303 |      | " BOTTOM "         |   |
| 304 |      | LOWER WALL         |   |
| 305 |      | FLOOR              |   |
| 306 |      | "                  |   |
| 307 |      | "                  |   |
| 308 |      | "                  |   |
| 309 |      | TABLE TOP          |   |
| 310 |      | " "                |   |
| 311 |      | " LEFT dwr         |   |
| 312 |      | " RIGHT "          |   |
| 313 |      | FLOOR              |   |
| 314 |      | "                  |   |
| 315 |      | "                  |   |





O = wife  
LOCATED

- Surveyed 100% of lower surfaces using 4368 NO READINGS IN EXCESS OF NORMAL  
BACKGROUND LEVELS WERE NOTED

15 of 20

Assay Definition-

Assay Description:  
Equipment Swipes

Assay Type: CPM  
Report Name: Report1  
Output Data Path: C:\Packard\Tricarb\Results\Ed Gailor\Eds Monthly Swipes  
Raw Results Path: C:\Packard\Tricarb\Results\Ed Gailor\Eds Monthly Swipes\20121210\_1122  
\20121210\_1122.results  
RTF File Name: C:\Packard\Tricarb\Results\Ed Gailor\Eds Monthly Swipes\Ed's Monthly  
Swipes.rtf  
Assay File Name: C:\Packard\TriCarb\Assays\Eds Monthly Swipes.lsa

Count Conditions-

Nuclide: Triple  
Quench Indicator: tSIE/AEC  
External Std Terminator (sec): 5 sec  
Pre-Count Delay (min): 0.00  
Quench Set: n/a  
Count Time (min): 1.00  
Count Mode: Normal  
Assay Count Cycles: 1 Repeat Sample Count: 1  
#Vials/Sample: 1 Calculate % Reference: Off

Background Subtract: On - Manual  
Low CPM Threshold: Off  
2 Sigma % Terminator: Off

| Regions | LL   | UL     | Bkg Subtract |
|---------|------|--------|--------------|
| A       | 0.0  | 18.6   | 0.00         |
| B       | 18.6 | 156.0  | 0.00         |
| C       | 0.0  | 2000.0 | 0.00         |

Count Corrections-

Static Controller: On Luminescence Correction: On  
Colored Samples: n/a Heterogeneity Monitor: n/a  
Coincidence Time (nsec): 18 Delay Before Burst (nsec): 75

Half Life-

Half Life Correction: Off

| Regions | Half Life | Units | Reference Date | Reference Time |
|---------|-----------|-------|----------------|----------------|
| A       |           |       |                |                |
| B       |           |       |                |                |
| C       |           |       |                |                |

Cycle 1 Results

| S# | CPMA  | CPMB | CPMC | MESSAGES |
|----|-------|------|------|----------|
| 1  | B6 11 | 8    | 22   |          |
| 2  | 10    | 3    | 21   |          |
| 3  | 5     | 6    | 16   |          |
| 4  | 11    | 7    | 22   |          |
| 5  | 21    | 8    | 35   |          |
| 6  | 12    | 3    | 17   |          |
| 7  | 7     | 10   | 23   |          |
| 8  | 9     | 3    | 18   |          |
| 9  | 15    | 10   | 30   |          |
| 10 | 12    | 6    | 25   |          |

|    |    |    |    |
|----|----|----|----|
| 11 | 15 | 6  | 27 |
| 12 | 16 | 8  | 29 |
| 13 | 9  | 10 | 23 |
| 14 | 20 | 7  | 32 |
| 15 | 10 | 5  | 22 |
| 16 | 8  | 9  | 18 |
| 17 | 10 | 9  | 25 |
| 18 | 11 | 6  | 18 |
| 19 | 8  | 4  | 18 |
| 20 | 12 | 5  | 21 |
| 21 | 11 | 5  | 18 |
| 22 | 8  | 7  | 19 |
| 23 | 12 | 12 | 27 |
| 24 | 12 | 6  | 24 |
| 25 | 2  | 7  | 15 |
| 26 | 10 | 6  | 23 |
| 27 | 5  | 9  | 22 |
| 28 | 9  | 6  | 20 |
| 29 | 13 | 8  | 27 |
| 30 | 6  | 7  | 16 |
| 31 | 8  | 2  | 11 |
| 32 | 14 | 6  | 27 |
| 33 | 9  | 6  | 21 |
| 34 | 15 | 5  | 22 |
| 35 | 9  | 7  | 24 |
| 36 | 6  | 5  | 16 |
| 37 | 16 | 6  | 23 |
| 38 | 3  | 6  | 18 |
| 39 | 8  | 5  | 18 |
| 40 | 16 | 7  | 26 |
| 41 | 2  | 12 | 21 |
| 42 | 9  | 7  | 20 |
| 43 | 8  | 5  | 20 |
| 44 | 11 | 5  | 24 |
| 45 | 7  | 6  | 18 |
| 46 | 10 | 5  | 21 |
| 47 | 11 | 2  | 17 |
| 48 | 11 | 5  | 18 |
| 49 | 13 | 6  | 21 |
| 50 | 14 | 2  | 21 |
| 51 | 8  | 7  | 17 |
| 52 | 7  | 4  | 16 |
| 53 | 12 | 4  | 22 |
| 54 | 12 | 6  | 27 |
| 55 | 9  | 4  | 15 |
| 56 | 15 | 5  | 23 |
| 57 | 5  | 13 | 23 |
| 58 | 10 | 10 | 22 |
| 59 | 11 | 6  | 25 |
| 60 | 15 | 7  | 23 |
| 61 | 12 | 6  | 24 |
| 62 | 8  | 5  | 17 |
| 63 | 11 | 7  | 21 |
| 64 | 6  | 4  | 12 |
| 65 | 10 | 8  | 23 |
| 66 | 4  | 6  | 15 |
| 67 | 10 | 10 | 26 |
| 68 | 16 | 5  | 24 |
| 69 | 11 | 4  | 20 |
| 70 | 14 | 5  | 23 |
| 71 | 15 | 9  | 27 |
| 72 | 13 | 6  | 22 |
| 73 | 4  | 7  | 14 |



|     |    |    |    |
|-----|----|----|----|
| 74  | 10 | 5  | 18 |
| 75  | 12 | 9  | 25 |
| 76  | 11 | 6  | 23 |
| 77  | 11 | 6  | 22 |
| 78  | 8  | 3  | 17 |
| 79  | 8  | 3  | 17 |
| 80  | 11 | 7  | 22 |
| 81  | 4  | 6  | 14 |
| 82  | 4  | 5  | 18 |
| 83  | 7  | 8  | 17 |
| 84  | 8  | 6  | 17 |
| 85  | 6  | 7  | 16 |
| 86  | 7  | 3  | 11 |
| 87  | 13 | 7  | 25 |
| 88  | 13 | 5  | 19 |
| 89  | 14 | 2  | 19 |
| 90  | 8  | 5  | 19 |
| 91  | 19 | 5  | 33 |
| 92  | 5  | 11 | 21 |
| 93  | 12 | 13 | 30 |
| 94  | 12 | 5  | 23 |
| 95  | 14 | 7  | 25 |
| 96  | 9  | 7  | 22 |
| 97  | 8  | 5  | 15 |
| 98  | 9  | 7  | 18 |
| 99  | 12 | 6  | 24 |
| 100 | 6  | 8  | 14 |
| 101 | 11 | 6  | 19 |
| 102 | 7  | 11 | 20 |
| 103 | 9  | 7  | 23 |
| 104 | 12 | 6  | 25 |
| 105 | 14 | 9  | 26 |
| 106 | 12 | 5  | 22 |
| 107 | 12 | 9  | 28 |
| 108 | 10 | 8  | 24 |
| 109 | 19 | 6  | 30 |
| 110 | 14 | 7  | 22 |
| 111 | 5  | 3  | 15 |
| 112 | 13 | 7  | 25 |
| 113 | 12 | 7  | 20 |
| 114 | 6  | 6  | 15 |
| 115 | 10 | 4  | 20 |
| 116 | 11 | 4  | 20 |
| 117 | 8  | 9  | 22 |
| 118 | 12 | 10 | 23 |
| 119 | 8  | 4  | 15 |
| 120 | 11 | 3  | 19 |
| 121 | 14 | 9  | 31 |
| 122 | 9  | 12 | 27 |
| 123 | 10 | 7  | 18 |
| 124 | 12 | 9  | 22 |
| 125 | 6  | 7  | 18 |
| 126 | 9  | 7  | 18 |
| 127 | 3  | 11 | 17 |
| 128 | 6  | 6  | 15 |
| 129 | 8  | 8  | 20 |
| 130 | 11 | 6  | 23 |
| 131 | 7  | 4  | 12 |
| 132 | 11 | 7  | 23 |
| 133 | 7  | 5  | 14 |
| 134 | 10 | 4  | 21 |
| 135 | 8  | 6  | 15 |
| 136 | 12 | 6  | 23 |

17 of 25

Protocol# 4 - Eds Monthly Swipes.lsa

User: Ed Gailor

|     |    |    |    |
|-----|----|----|----|
| 137 | 7  | 8  | 20 |
| 138 | 16 | 5  | 27 |
| 139 | 10 | 7  | 24 |
| 140 | 6  | 4  | 15 |
| 141 | 8  | 4  | 14 |
| 142 | 12 | 6  | 25 |
| 143 | 10 | 8  | 22 |
| 144 | 13 | 5  | 21 |
| 145 | 7  | 6  | 18 |
| 146 | 6  | 4  | 15 |
| 147 | 12 | 2  | 21 |
| 148 | 8  | 5  | 21 |
| 149 | 5  | 6  | 17 |
| 150 | 13 | 5  | 22 |
| 151 | 14 | 10 | 29 |
| 152 | 10 | 6  | 19 |
| 153 | 6  | 7  | 22 |
| 154 | 8  | 6  | 21 |
| 155 | 14 | 6  | 24 |
| 156 | 10 | 3  | 18 |
| 157 | 14 | 4  | 23 |
| 158 | 5  | 7  | 18 |
| 159 | 7  | 5  | 16 |
| 160 | 18 | 12 | 34 |
| 161 | 8  | 5  | 17 |
| 162 | 10 | 2  | 19 |
| 163 | 14 | 4  | 23 |
| 164 | 12 | 8  | 20 |
| 165 | 10 | 4  | 16 |
| 166 | 5  | 5  | 16 |
| 167 | 7  | 4  | 17 |
| 168 | 10 | 7  | 24 |
| 169 | 13 | 6  | 24 |
| 170 | 15 | 10 | 34 |
| 171 | 13 | 4  | 21 |
| 172 | 11 | 7  | 20 |
| 173 | 9  | 5  | 19 |
| 174 | 19 | 5  | 29 |
| 175 | 12 | 7  | 26 |
| 176 | 10 | 7  | 21 |
| 177 | 14 | 8  | 27 |
| 178 | 11 | 2  | 16 |
| 179 | 3  | 4  | 13 |
| 180 | 11 | 9  | 26 |
| 181 | 8  | 2  | 15 |
| 182 | 9  | 2  | 12 |
| 183 | 12 | 7  | 21 |
| 184 | 13 | 5  | 24 |
| 185 | 8  | 5  | 18 |
| 186 | 12 | 9  | 24 |
| 187 | 9  | 7  | 19 |
| 188 | 11 | 3  | 21 |
| 189 | 9  | 3  | 17 |
| 190 | 17 | 4  | 27 |
| 191 | 10 | 6  | 18 |
| 192 | 9  | 4  | 17 |
| 193 | 8  | 8  | 20 |
| 194 | 10 | 9  | 25 |
| 195 | 6  | 6  | 16 |
| 196 | 7  | 6  | 15 |
| 197 | 10 | 4  | 17 |
| 198 | 5  | 8  | 19 |
| 199 | 7  | 7  | 16 |

|     |    |    |    |
|-----|----|----|----|
| 200 | 10 | 6  | 21 |
| 201 | 4  | 5  | 14 |
| 202 | 12 | 6  | 23 |
| 203 | 12 | 7  | 24 |
| 204 | 7  | 6  | 15 |
| 205 | 7  | 4  | 16 |
| 206 | 10 | 4  | 19 |
| 207 | 15 | 10 | 26 |
| 208 | 8  | 3  | 19 |
| 209 | 10 | 4  | 21 |
| 210 | 8  | 7  | 19 |
| 211 | 12 | 7  | 25 |
| 212 | 13 | 3  | 21 |
| 213 | 5  | 4  | 9  |
| 214 | 8  | 9  | 21 |
| 215 | 13 | 10 | 29 |
| 216 | 18 | 10 | 30 |
| 217 | 15 | 7  | 28 |
| 218 | 13 | 6  | 26 |
| 219 | 10 | 1  | 14 |
| 220 | 10 | 9  | 24 |
| 221 | 10 | 6  | 21 |
| 222 | 6  | 4  | 16 |
| 223 | 18 | 7  | 30 |
| 224 | 9  | 9  | 24 |
| 225 | 13 | 3  | 20 |
| 226 | 12 | 10 | 26 |
| 227 | 7  | 8  | 19 |
| 228 | 9  | 4  | 20 |
| 229 | 7  | 6  | 21 |
| 230 | 1  | 7  | 12 |
| 231 | 9  | 3  | 14 |
| 232 | 14 | 8  | 24 |
| 233 | 12 | 3  | 20 |
| 234 | 4  | 6  | 13 |
| 235 | 9  | 5  | 19 |
| 236 | 13 | 4  | 20 |
| 237 | 19 | 9  | 30 |
| 238 | 8  | 8  | 17 |
| 239 | 8  | 3  | 15 |
| 240 | 7  | 10 | 22 |
| 241 | 9  | 4  | 20 |
| 242 | 8  | 8  | 23 |
| 243 | 9  | 3  | 19 |
| 244 | 12 | 4  | 18 |
| 245 | 5  | 10 | 22 |
| 246 | 13 | 7  | 25 |
| 247 | 10 | 10 | 25 |
| 248 | 14 | 10 | 30 |
| 249 | 7  | 8  | 17 |
| 250 | 14 | 7  | 28 |
| 251 | 19 | 3  | 29 |
| 252 | 8  | 7  | 20 |
| 253 | 10 | 7  | 18 |
| 254 | 12 | 4  | 21 |
| 255 | 10 | 4  | 20 |
| 256 | 14 | 5  | 25 |
| 257 | 3  | 5  | 14 |
| 258 | 9  | 9  | 25 |
| 259 | 11 | 7  | 21 |
| 260 | 12 | 10 | 27 |
| 261 | 8  | 8  | 20 |
| 262 | 9  | 7  | 21 |

20 of 2

|     |    |    |    |
|-----|----|----|----|
| 263 | 13 | 1  | 19 |
| 264 | 9  | 5  | 22 |
| 265 | 11 | 11 | 27 |
| 266 | 12 | 10 | 27 |
| 267 | 19 | 9  | 35 |
| 268 | 7  | 5  | 18 |
| 269 | 12 | 10 | 24 |
| 270 | 15 | 6  | 23 |
| 271 | 10 | 5  | 17 |
| 272 | 9  | 2  | 17 |
| 273 | 13 | 9  | 26 |
| 274 | 10 | 9  | 21 |
| 275 | 7  | 10 | 22 |
| 276 | 7  | 6  | 15 |
| 277 | 13 | 6  | 24 |
| 278 | 17 | 9  | 33 |
| 279 | 9  | 4  | 14 |
| 280 | 11 | 8  | 21 |
| 281 | 6  | 8  | 17 |
| 282 | 11 | 5  | 23 |
| 283 | 2  | 1  | 5  |
| 284 | 12 | 8  | 25 |
| 285 | 11 | 5  | 20 |
| 286 | 11 | 6  | 25 |
| 287 | 10 | 8  | 22 |
| 288 | 10 | 4  | 16 |
| 289 | 15 | 7  | 24 |
| 290 | 13 | 3  | 21 |
| 291 | 5  | 6  | 13 |
| 292 | 9  | 3  | 16 |
| 293 | 8  | 11 | 22 |
| 294 | 14 | 6  | 24 |
| 295 | 8  | 2  | 12 |
| 296 | 12 | 7  | 24 |
| 297 | 11 | 9  | 22 |
| 298 | 11 | 2  | 17 |
| 299 | 5  | 5  | 17 |
| 300 | 6  | 6  | 13 |
| 301 | 4  | 11 | 20 |
| 302 | 3  | 4  | 11 |
| 303 | 10 | 9  | 26 |
| 304 | 7  | 4  | 18 |
| 305 | 10 | 2  | 17 |
| 306 | 13 | 9  | 23 |
| 307 | 4  | 10 | 18 |
| 308 | 14 | 8  | 29 |
| 309 | 5  | 7  | 16 |
| 310 | 13 | 6  | 26 |
| 311 | 8  | 8  | 23 |
| 312 | 9  | 4  | 17 |
| 313 | 5  | 8  | 19 |
| 314 | 9  | 3  | 18 |
| 315 | 9  | 7  | 23 |
| 316 | 16 | 6  | 27 |
| 317 | 16 | 4  | 23 |
| 318 | 14 | 9  | 25 |
| 319 | 13 | 4  | 22 |
| 320 | 15 | 2  | 22 |
| 321 | 10 | 4  | 14 |