

Radiological Survey Sheet

Job Location Pfizer Central Research Grafton 118N/N108 Page 1 of 12
 Survey Purpose Radiological Assessment Date 11/25/01
 Performed By Pam Jones (Print) Pam Jones (Sign)

Inst.(1) (Model/SN) Beckman LS 6500 #7069448	Inst.(2) <u>Ludlum 224-2</u> (Model/SN) <u>#137751</u>	Inst.(3) (Model/SN)
Det. Internal (Model/SN)	Det. <u>Ludlum 43-68</u> (Model/SN) <u>#PR140899</u>	Det. (Model/SN)
Eff. See LSC Printout	Eff. <u>~ 8% C-14</u>	Eff.
Type rad. β	Type rad. <u>B</u>	Type rad.
Bkgd. See LSC Printout	Bkgd. <u>300cpm</u>	Bkgd.
Cal. Due. <u>12/06 12/01</u>	Cal. Due <u>4/28/01</u>	Cal. due

No.	Time	Location	Inst. Used	Total Activity (dpm/100 cm ²)
1.	2:00	door	1	See attached LSC Printout
2.		wall	1	
3.		"	1	
4.		"	1	
5.		"	1	
6.		"	1	
7.		"	1	
8.		door	1	
9.		floor	1	
10.		"	1	
11.		"	1	
12.		"	1	
13.		"	1	
14.		"	1	
15.		"	1	
16.		"	1	
17.		back of shelves	1	
18.	✓	back of cabinets	1	

Radiological Survey Continuation Sheet

Page 2 of 12

Date 1/25/01

No.	Time	Location	Inst. Used	Total Activity (dpm/100 cm ²)
19		wall		
20		door	1	See attached LSC Printout
21		shower	1	
22		desk	1	
23		shower	1	
24		desk	1	
25		floor	1	
26		wall	1	
27		floor	1	
28		"	1	
29		"	1	
30		"	1	
31		"	1	
32		outside shower	1	
33		top shelf	1	
34		shelf	1	
35		bottom shelf	1	
36		out. shower	1	
37		top shelf	1	
38		shelf	1	
39		bot. shelf	1	
40		counter shelf	1	
41		counter	1	
42		"	1	
43		"	1	
44		orange plastic	1	
45		blue plastic	1	
46	✓	out. drawers	1	✓

Radiological Survey Continuation Sheet

Page 3 of 12

Date 1/25/01

No.	Time	Location	Inst. Used	Total Activity (dpm/100 cm ²)
47		top drawer	1	See attached LSC Printout
48		drawer	1	
49		"	1	
50		bot. drawer	1	
51		out. side drawers	1	
52		top drawer	1	
53		drawer	1	
54		"	1	
55		bot. drawer	1	
56		out. drawers	1	
57		top drawer	1	
58		drawer	1	
59		"	1	
60		"	1	
61		bot. drawer	1	
62		out. shelves	1	
63		top shelf	1	
64		shelf	1	
65		bot. shelf	1	
66		out. shelves	1	
67		top shelf	1	
68		shelf	1	
69		bot. shelf	1	
70		counter shelf	1	
71		counter	1	
72		"	1	
73		"	1	
74	✓	out. drawers	1	✓

Radiological Survey Continuation Sheet

Page 4 of 12

Date 1/25/01

No.	Time	Location	Inst. Used	Total Activity (dpm/100 cm ²)
75		top drawer	1	See attached LSC Printout
76		drawer	1	
77		"	1	
78		"	1	
79		bot. drawer	1	
80		mid drawer	1	
81		top drawer	1	
82		drawer	1	
83		"	1	
84		"	1	
85		bot. drawer	1	
86		Floor	1	
87		"	1	
88		"	1	
89		door	1	
90		shelves	1	
91		desk	1	
92		wall	1	
93		shelves	1	
94		desk	1	
95		Floor	1	
96		wall	1	
97		Chair	1	
98		outside shelves	1	
99		top shelf	1	
100		shelf	1	
101		bot. shelf	1	
102	✓	out. shelves	1	✓

Radiological Survey Continuation Sheet

Page 5 of 12
 Date 1/25/01

No.	Time	Location	Inst. Used	Total Activity (dpm/100 cm ²)
103		top shelf		
104		shelf	1	See attached LSC Printout
105		bot. shelf	1	
106		counter shelf	1	
107		counter	1	
108		"	1	
109		"	1	
110		top shelf	1	
111		bottom shelf	1	
112		out. shelves ^{PT} drawers	1	
113		top drawer	1	
114		drawer	1	
115		"	1	
116		"	1	
117		bot. drawer	1	
118		out. drawers	1	
119		top drawer	1	
120		drawer	1	
121		"	1	
122		"	1	
123		bot. drawer	1	
124		floor	1	
125		"	1	
126		"	1	
127		"	1	
128		"	1	
129		out. shelves	1	
130		top shelf	1	

Radiological Survey Continuation Sheet

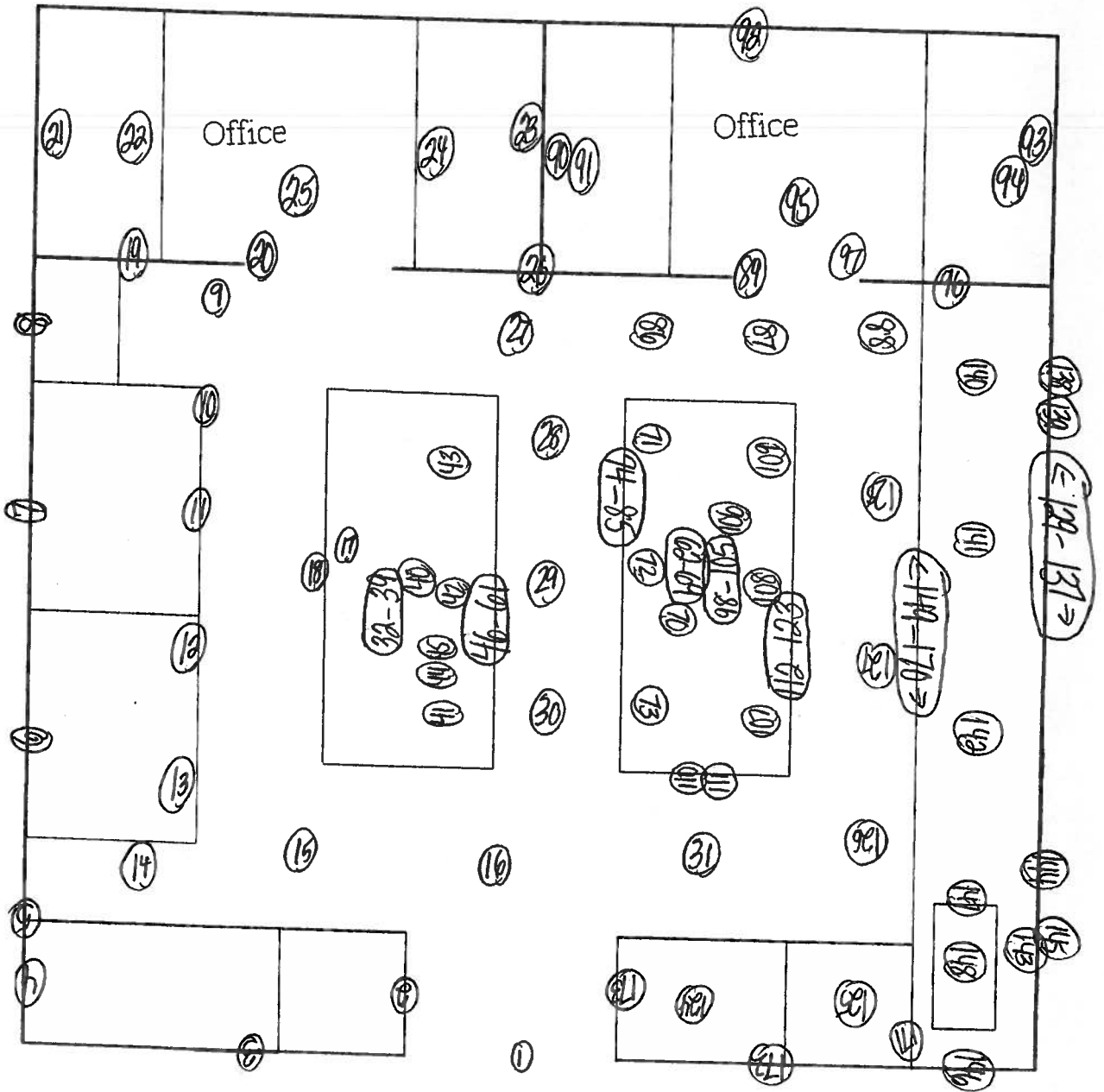
Page 6 of 12
 Date 1/25/01

No.	Time	Location	Inst. Used	Total Activity (dpm/100 cm ²)
131		bot. shelf	1	See attached LSC Printout
132		out. shelves	1	
133		top shelf	1	
134		bot. shelf	1	
135		out. shelves	1	
136		top shelf	1	
137		bot. shelf	1	
138		shelf	1	
139		"	1	
140		counter	1	
141		"	1	
142		"	1	
143		"	1	
144		peg wall	1	
145		pipe dryer	1	
146		wall	1	
147		sides of sink	1	
148		bottom + drain	1	
149		out. drawers	1	
150		top drawer	1	
151		drawer	1	
152		"	1	
153		"	1	
154		bot. drawer	1	
155		out. drawers	1	
156		top drawer	1	
157		drawer	1	
158	✓	"	1	✓

Radiological Survey Continuation Sheet

Page 7 of 12
 Date 1/25/01

No.	Time	Location	Inst. Used	Total Activity (dpm/100 cm ²)
159		drawer		
160		bot. drawer	1	See attached LSC Printout
161		cut. drawers	1	
162		top drawer	1	
163		drawer	1	
164		"	1	
165		"	1	
166		bot. drawer	1	
167		cut. cabinet	1	
168		left	1	
169		bottom	1	
170		right	1	
171		wall	1	
172		wall	1	
173		wall	1	
174			1	
175			1	
176			1	
177			1	
178			1	
179			1	
180			1	
181			1	
182			1	
183			1	
184			1	
185			1	
186			1	



Surveyed 100% of all lower surfaces using instrument #2.
All areas were noted to be at a level of normal background.

○ = wipe location

ID: EQUIPMENT SURVY

26 JAN 2001 12:50

USER: 1 COMMENT: EQUIPMENT SURVEY

PRESET TIME : 1.00
 A CALC : DL DPM H# : YES SAMPLE REPEATS: 1 PRINTER : EDIT
 COUNT BLANK : YES IC# : NO REPLICATES : 1 RS232 : EDIT
 TWO PHASE : NO AQC : YES CYCLE REPEATS : 1
 SCINTILLATOR: LIQUID LUMEX: YES LOW SAMPLE REJ: 0
 LOW LEVEL : NO HALF LIFE CORRECTION DATE: none

ISOTOPE 1: 3H %ERROR: 2.00 FACTOR: 1.0000 BKG. SUB: 0
 ISOTOPE 2: 14C %ERROR: 2.00 FACTOR: 1.0000 BKG. SUB: 0
 WIDE OPEN WINDOW %ERROR: 0.00 FACTOR: 1.0000 BKG. SUB: 0

BACKGROUND QUENCH CURVE: Off COLOR QUENCH CORRECTION: Off

Quench Limits Low: 13.688 High: 306.34

SAM NO	H#	3H CPM	14C CPM	WIDE CPM	3H DPM	14C DPM	LUMEX %	
B1	69.8	23.00	3.00	37.00	45.63	3.63	1.47	
		Blank Average	DPM	for	3H :	45.63	COEF. OF VAR:	0.000
		Blank Average	DPM	for	14C :	3.63	COEF. OF VAR:	0.000
1	71.9	10.00	8.00	32.00	-28.93	6.88	2.03	
2	79.6	15.00	9.00	31.00	-18.12	8.18	4.54	
3	73.8	25.00	7.00	36.00	3.01	5.31	2.27	
4	74.2	23.00	12.00	49.00	-3.58	12.03	1.01	
5	83.3	19.00	12.00	40.00	-10.47	12.15	1.38	
6	90.1	20.00	6.00	34.00	-3.67	4.10	3.74	
7	87.1	25.00	8.00	43.00	5.74	6.69	1.49	
8	75.0	14.00	11.00	30.00	-21.82	10.84	1.60	
9	84.2	23.00	9.00	42.00	0.07	8.06	1.56	
10	81.6	12.00	7.00	26.00	-23.31	5.55	2.23	
11	83.9	17.00	11.00	37.00	-14.21	10.85	1.51	
12	79.8	21.00	8.00	43.00	-4.69	6.74	0.92	
13	89.0	20.00	12.00	35.00	-7.20	12.17	2.66	
14	85.0	11.00	11.00	34.00	-27.27	10.96	1.68	
15	85.1	17.00	11.00	35.00	-14.03	10.86	5.10	
16	81.7	20.00	8.00	33.00	-6.47	6.76	2.48	
17	88.3	20.00	13.00	44.00	-7.88	13.52	4.47	
18	80.4	14.00	2.00	33.00	-16.51	-1.19	1.69	
19	74.9	15.00	11.00	35.00	-19.73	10.82	1.07	
20	76.3	11.00	7.00	27.00	-25.97	5.55	1.47	
21	74.7	14.00	7.00	33.00	-19.83	5.49	0.69	
22	77.6	21.00	9.00	35.00	-5.63	8.07	1.21	
23	75.4	27.00	11.00	51.00	5.55	10.63	0.74	
24	75.7	20.00	12.00	43.00	-9.62	12.08	0.61	
25	79.9	15.00	13.00	38.00	-20.15	13.54	2.35	
26	74.7	14.00	8.00	30.00	-20.33	6.83	1.94	
27	81.8	26.00	8.00	50.00	6.57	6.66	1.16	
28	80.4	25.00	7.00	46.00	4.58	5.33	0.88	
29	76.9	14.00	12.00	34.00	-22.12	12.19	2.13	
30	79.0	18.00	8.00	34.00	-11.26	6.78	0.62	
31	82.4	12.00	10.00	29.00	-24.80	9.58	1.15	
32	80.3	16.00	8.00	30.00	-15.35	6.82	1.57	
33	81.8	17.00	7.00	33.00	-12.43	5.47	2.32	
34	85.6	15.00	14.00	34.00	-19.98	14.93	3.36	
35	84.6	27.00	34.00	73.00	-4.38	41.58	0.46	
36	79.9	25.00	13.00	44.00	1.34	13.37	2.14	

SAM NO	H#	3H CPM	14C CPM	WIDE CPM	3H DPM	14C DPM	LUMEX %
37	83.3	20.00	10.00	42.00	-7.22	9.45	0.85
38	84.9	15.00	10.00	31.00	-17.93	9.55	1.15
39	79.4	14.00	11.00	36.00	-21.32	10.87	0.99
40	88.8	16.00	12.00	38.00	-16.23	12.24	1.53
41	81.7	21.00	10.00	42.00	-5.35	9.43	1.31
42	75.9	22.00	9.00	40.00	-3.84	8.04	0.87
43	77.9	18.00	12.00	41.00	-13.50	12.13	0.81
44	78.2	18.00	12.00	39.00	-13.46	12.13	1.02
45	79.1	19.00	10.00	41.00	-10.13	9.45	0.65
46	77.2	16.00	9.00	33.00	-16.31	8.15	1.49
47	76.3	16.00	11.00	38.00	-17.45	10.82	1.12
48	74.4	23.00	9.00	43.00	-2.03	8.02	0.48
49	77.1	23.00	16.00	54.00	-5.07	17.40	0.23
50	76.0	23.00	10.00	46.00	-2.22	9.36	1.12
51	77.8	18.00	10.00	36.00	-12.49	9.45	0.98
52	77.4	19.00	14.00	41.00	-12.47	14.79	0.92
53	77.9	16.00	16.00	39.00	-19.80	17.52	0.55
54	78.8	17.00	9.00	37.00	-9.67	8.10	1.46
55	77.7	16.00	12.00	35.00	-17.78	12.16	0.67
56	78.1	19.00	3.00	33.00	-6.70	0.07	0.70
57	75.1	20.00	15.00	46.00	-11.23	16.09	0.83
58	74.0	14.00	8.00	34.00	-20.41	6.83	1.63
59	77.4	15.00	9.00	30.00	-18.41	8.16	1.39
60	79.0	20.00	9.00	37.00	-7.51	8.09	0.32
61	78.2	5.00	7.00	26.00	-38.58	5.66	1.67
62	80.5	17.00	13.00	36.00	-15.77	13.51	0.69
63	82.4	24.00	10.00	45.00	1.31	9.38	0.49
64	79.2	24.00	11.00	39.00	0.07	10.70	1.10
65	81.9	18.00	8.00	36.00	-10.76	6.79	1.25
66	82.1	19.00	12.00	38.00	-10.66	12.15	0.64
67	81.3	16.00	11.00	32.00	-16.78	10.85	0.91
68	82.2	19.00	14.00	44.00	-11.71	14.83	0.58
69	82.2	19.00	8.00	41.00	-8.54	6.78	0.74
70	96.3	18.00	11.00	43.00	-9.79	10.91	0.99
71	88.9	19.00	5.00	33.00	-5.62	2.76	1.26
72	80.3	17.00	12.00	39.00	-15.29	12.17	0.65
73	92.9	13.00	11.00	35.00	-21.93	10.98	1.84
74	76.2	20.00	7.00	36.00	-6.99	5.40	1.18
75	78.0	14.00	10.00	31.00	-20.97	9.52	0.66
76	74.4	15.00	11.00	32.00	-19.79	10.82	1.31
77	75.9	25.00	7.00	43.00	3.49	5.32	0.82
78	75.6	20.00	4.00	27.00	-5.57	1.39	1.04
79	77.9	20.00	8.00	39.00	-7.19	6.74	1.11
80	80.6	20.00	10.00	41.00	-7.72	9.44	0.46
81	78.5	25.00	5.00	40.00	5.14	2.65	0.71
82	76.3	14.00	8.00	29.00	-20.14	6.84	3.57
83	72.8	19.00	7.00	38.00	-9.67	5.41	1.12
84	78.0	17.00	10.00	32.00	-14.59	9.47	1.40
85	74.9	16.00	9.00	31.00	-16.62	8.13	0.67
86	90.5	16.00	6.00	28.00	-12.65	4.17	1.16
87	84.1	21.00	12.00	37.00	-5.94	12.12	1.44
88	98.6	15.00	17.00	49.00	-19.94	19.11	0.84
89	78.7	18.00	8.00	32.00	-11.31	6.78	0.85
90	79.4	21.00	9.00	42.00	-5.27	8.07	0.46
91	88.2	17.00	11.00	36.00	-13.53	10.88	0.65
92	79.6	23.00	15.00	48.00	-4.06	16.08	0.63
93	84.0	22.00	15.00	46.00	-5.37	16.14	0.85
94	81.5	13.00	9.00	31.00	-22.20	8.22	1.92

SAM NO	H#	3H CPM	14C CPM	WIDE CPM	3H DPM	14C DPM	LUMEX %
85	82.6	22.00	12.00	43.00	-4.05	12.10	0.95
90	78.6	20.00	10.00	42.00	-8.08	9.43	0.43
97	71.3	13.00	11.00	33.00	-24.28	10.83	0.53
98	95.5	19.00	14.00	38.00	-9.32	14.94	2.77
99	91.1	16.00	12.00	39.00	-15.87	12.26	2.46
100	82.0	14.00	11.00	33.00	-21.02	10.89	1.34
101	94.0	17.00	8.00	31.00	-10.86	6.86	1.64
102	79.0	10.00	11.00	32.00	-29.93	10.93	1.99
103	90.7	13.00	8.00	31.00	-20.54	6.92	2.62
104	86.8	14.00	9.00	30.00	-19.36	8.23	0.97
105	88.2	13.00	10.00	31.00	-21.96	9.60	1.30
106	91.0	14.00	10.00	34.00	-19.33	9.60	2.24
107	83.1	17.00	8.00	34.00	-12.75	6.82	1.95
108	82.6	11.00	9.00	28.00	-26.42	8.26	1.17
109	75.9	27.00	14.00	56.00	4.16	14.65	0.65
110	98.0	11.00	10.00	26.00	-25.43	9.70	5.32
111	99.3	14.00	12.00	42.00	-19.30	12.36	1.75
112	80.8	6.00	6.00	29.00	+35.82	4.31	2.78
113	76.3	18.00	18.00	46.00	-16.79	20.15	0.64
114	76.6	15.00	9.00	36.00	-18.50	8.16	0.83
115	76.5	14.00	10.00	35.00	-21.14	9.51	0.67
116	76.1	13.00	12.00	32.00	-24.31	12.20	0.91
117	80.9	13.00	6.00	26.00	-20.69	4.19	0.41
118	76.5	24.00	8.00	41.00	1.02	6.67	0.39
119	74.5	13.00	11.00	30.00	-23.96	10.85	0.68
120	74.0	21.00	7.00	38.00	-5.30	5.38	0.89
121	75.3	14.00	12.00	35.00	-22.29	12.18	0.81
122	77.0	11.00	5.00	28.00	-24.89	2.88	0.59
123	74.7	10.00	17.00	31.00	-33.26	18.92	0.59
124	85.5	22.00	15.00	49.00	-5.05	16.15	0.88
125	98.1	19.00	10.00	40.00	-6.50	9.55	1.24
126	84.7	21.00	12.00	46.00	-5.83	12.13	0.73
127	89.8	22.00	6.00	44.00	0.79	4.06	1.17
128	85.9	20.00	11.00	41.00	-7.25	10.81	1.15
129	77.2	20.00	15.00	45.00	-10.89	16.11	1.20
130	79.6	16.00	9.00	29.00	-15.98	8.16	0.84
131	81.5	23.00	11.00	52.00	-1.59	10.73	0.44
132	76.2	19.00	4.00	33.00	-7.56	1.40	1.39
133	80.4	17.00	10.00	34.00	-14.23	9.49	0.72
134	81.8	19.00	7.00	37.00	-8.09	5.44	1.28
135	75.3	19.00	6.00	37.00	-8.74	4.08	0.92
136	78.2	28.00	12.00	50.00	7.86	11.97	0.78
137	89.2	18.00	10.00	34.00	-10.55	9.52	0.83
138	85.8	20.00	9.00	34.00	-6.20	8.12	1.20
139	88.6	18.00	14.00	43.00	-12.86	14.90	1.07
140	77.8	20.00	6.00	37.00	-6.17	4.07	0.50
141	82.6	17.00	9.00	34.00	-13.35	8.16	0.66
142	87.0	13.00	8.00	40.00	-21.01	6.90	2.25
143	90.7	19.00	11.00	44.00	-8.57	10.86	0.64
144	77.8	16.00	7.00	29.00	-15.19	5.47	0.43
145	76.7	21.00	11.00	42.00	-6.82	10.74	0.80
146	77.8	12.00	17.00	39.00	-28.85	18.92	0.62
147	75.2	20.00	12.00	42.00	-9.69	12.08	0.79
148	76.8	8.00	4.00	20.00	-30.74	1.59	1.06
149	79.2	14.00	5.00	26.00	-18.24	2.83	0.97
150	77.1	18.00	5.00	27.00	-10.04	2.76	0.87
151	77.5	16.00	6.00	34.00	-14.72	4.13	0.50
152	72.9	19.00	12.00	42.00	-12.15	12.08	1.00

SAM NO	H#	3H CPM	14C CPM	WIDE CPM	3H DPM	14C DPM	LUMEX %
	80.6	11.00	9.00	29.00	-26.61	8.25	0.48
	76.2	25.00	8.00	40.00	3.06	6.66	0.61
155	74.8	18.00	12.00	42.00	-13.95	12.11	0.74
156	77.5	19.00	16.00	44.00	-13.48	17.47	0.56
157	77.6	17.00	7.00	37.00	-13.09	5.46	0.43
158	76.9	17.00	9.00	35.00	-14.23	8.13	0.68
159	80.2	26.00	5.00	39.00	7.73	2.63	0.33
160	76.2	13.00	5.00	30.00	-20.74	2.84	0.31
161	78.6	24.00	9.00	43.00	0.97	8.02	0.55
162	75.4	11.00	9.00	32.00	-27.07	8.22	0.49
163	78.3	23.00	8.00	32.00	-0.70	6.70	0.49
164	75.7	16.00	8.00	29.00	-16.00	6.80	0.79
165	79.5	19.00	8.00	33.00	-9.03	6.77	0.64
166	79.3	12.00	9.00	30.00	-24.59	8.22	0.98
167	80.6	25.00	10.00	39.00	3.05	9.35	0.36
168	76.8	19.00	9.00	40.00	-10.02	8.09	0.79
169	98.8	14.00	9.00	33.00	-17.64	8.29	9.13
170	75.4	15.00	6.00	28.00	-17.13	4.14	1.08
171	78.5	27.00	12.00	50.00	5.81	11.99	0.50
172	79.6	17.00	9.00	38.00	-13.83	8.14	0.41
173	76.5	19.00	15.00	41.00	-13.13	16.12	0.29