

### Radiological Survey Sheet

Job Location Pfizer Central Research Grafton 118N/N107 Page 1 of 14  
 Survey Purpose Radiological Assessment Date 2/12/01  
 Performed By Pam Jones (Print) Pam Jones (Sign)

Inst.(1) Beckman LS 6500 (Model/SN) #7069448	Inst.(2) Ludlum 2241-2 (Model/SN) #163603	Inst.(3) (Model/SN)
Det. Internal (Model/SN)	Det. Ludlum 43-68 (Model/SN) #PR149613	Det. (Model/SN)
Eff. See LSC Printout	Eff. $\approx 8\%$ C14	Eff.
Type rad. $\beta$	Type rad. $\beta$	Type rad.
Bkgd. See LSC Printout	Bkgd. 300 cpm	Bkgd.
Cal. Due: <del>8/12/00</del> 12/01	Cal. Due 1/20/02	Cal. due

No.	Time	Location	Inst. Used	Total Activity (dpm/100 cm <sup>2</sup> )
1.	0900	wall	1	See attached LSC Printout
2.		"	1	
3.		ledge	1	
4.		wall	1	
5.		"	1	
6.		floor	1	
7.		door	1	
8.		wall	1	
9.		"	1	
10.		"	1	
11.		"	1	
12.		floor	1	
13.		"	1	
14.		"	1	
15.		"	1	
16.		"	1	
17.		"	1	
18.	✓	"	1	✓

Radiological Survey Continuation Sheet

Page 2 of 14

Date 2/12/01

No.	Time	Location	Inst. Used	Total Activity (dpm/100 cm <sup>2</sup> )
19		Floor		
20		"	1	See attached LSC Printout
21		"	1	
22		Wall	1	
23		"	1	
24		"	1	
25		outside shelves	1	
26		top shelf	1	
27		shelf	1	
28		bot. shelf	1	
29		out. shelves	1	
30		top shelf	1	
31		bot. shelf	1	
32		counter	1	
33		"	1	
34		out. drawers	1	
35		top left drawer	1	
36		drawer	1	
37		"	1	
38		top R. drawer	1	
39		drawer	1	
40		"	1	
41		bot. drawer	1	
42		out. shelves	1	
43		top shelf	1	
44		shelf	1	
45		bot. shelf	1	
46	✓	out. shelves	1	↓

Radiological Survey Continuation Sheet

Page 3 of 14

Date 2/12/01

No.	Time	Location	Inst. Used	Total Activity (dpm/100 cm <sup>2</sup> )
47		top shelf		
48		shelf	1	See attached LSC Printout
49		bot. shelf	1	
50		out. shelves	1	
51		top shelf	1	
52		shelf	1	
53		bot. shelf	1	
54		out. cabinet	1	
55		left	1	
56		bottom	1	
57		right	1	
58		counter	1	
59		"	1	
60		"	1	
61		out. drawers	1	
62		top drawer	1	
63		drawer	1	
64		"	1	
65		"	1	
66		bot. drawer	1	
67		door	1	
68		floor	1	
69		"	1	
70		"	1	
71		"	1	
72		"	1	
73		"	1	
74	✓	"	1	
			1	✓

Radiological Survey Continuation Sheet

Page 4 of 14  
 Date 2/12/01

No.	Time	Location	Inst. Used	Total Activity (dpm/100 cm <sup>2</sup> )
75		Floor		
76		out. shelves	1	See attached LSC Printout
77		top shelf	1	
78		shelf	1	
79		bot. shelf	1	
80		out. shelves	1	
81		top shelf	1	
82		shelf	1	
83		bot. shelf	1	
84		top shelf	1	
85		bot. shelf	1	
86		wall	1	
87		"	1	
88		"	1	
89		out. shelves	1	
90		top shelf	1	
91		shelf	1	
92		bot. shelf	1	
93		out. shelves	1	
94		top shelf	1	
95		shelf	1	
96		bot. shelf	1	
97		out. shelves	1	
98		top shelf	1	
99		shelf	1	
100		bot. shelf	1	
101		counter	1	
102	✓	"	1	✓

Radiological Survey Continuation Sheet

Page 5 of 14

Date 2/12/01

No.	Time	Location	Inst. Used	Total Activity (dpm/100 cm <sup>2</sup> )
103		counter		
104		out. drawers	1	See attached LSC Printout
105		top drawer	1	
106		drawer	1	
107		"	1	
108		"	1	
109		bot. drawer	1	
110		out. drawers	1	
111		top drawer	1	
112		drawer	1	
113		"	1	
114		"	1	
115		bot. drawer	1	
116		out. drawers	1	
117		top drawer	1	
118		drawer	1	
119		"	1	
120		"	1	
121		"	1	
122		bot. drawer	1	
123		out. drawers	1	
124		top drawer	1	
125		drawer	1	
126		"	1	
127		"	1	
128		"	1	
129		bot. drawer	1	
130	✓	out. drawers	1	✓

Radiological Survey Continuation Sheet

Page 6 of 14

Date 2/12/01

No.	Time	Location	Inst. Used	Total Activity (dpm/100 cm <sup>2</sup> )
131		top drawer	1	See attached LSC Printout
132		drawer	1	
133		"	1	
134		"	1	
135		bot. drawer	1	
136		wall	1	
137		"	1	
138		"	1	
139		floor	1	
140		door	1	
141		counter	1	
142		"	1	
143		cup sink	1	
144		out. drawers	1	
145		top drawer	1	
146		drawer	1	
147		"	1	
148		"	1	
149		"	1	
150		bot. drawer	1	
151		out. drawers	1	
152		top drawer	1	
153		drawer	1	
154		"	1	
155		"	1	
156		"	1	
157		bot. drawer	1	
158	✓	wall	1	✓

Radiological Survey Continuation Sheet

Page 7 of 14

Date 2/12/01

No.	Time	Location	Inst. Used	Total Activity (dpm/100 cm <sup>2</sup> )
159		wall	1	See attached LSC Printout
160		"	1	
161		"	1	
162		"	1	
163		floor	1	
164		"	1	
165		floor	1	
166		"	1	
167		"	1	
168		"	1	
169		"	1	
170		"	1	
171		wall	1	
172		door	1	
173		out. shelves	1	
174		top shelf	1	
175		shelf	1	
176		bot. shelf	1	
177		out. shelves	1	
178		top shelf	1	
179		shelf	1	
180		bot. shelf	1	
181		out. shelves	1	
182		top shelf	1	
183		shelf	1	
184		out. shelf	1	
185		counter	1	
186	✓	"	1	↓

Radiological Survey Continuation Sheet

Page 8 of 14

Date 2/12/01

No.	Time	Location	Inst. Used	Total Activity (dpm/100 cm <sup>2</sup> )
187		counter		
188		"	1	See attached LSC Printout
189		top shelf	1	
190		bot. shelf	1	
191		wall	1	
192		"	1	
193		"	1	
194		drawer	1	
195		"	1	
196		out. drawers	1	
197		top drawer	1	
198		drawer	1	
199		"	1	
200		"	1	
201		"	1	
202		bot. drawer	1	
203		out. drawers	1	
204		top drawer	1	
205		drawer	1	
206		"	1	
207		"	1	
208		"	1	
209		bot. drawer	1	
210		outside cabinet	1	
211		left	1	
212		bottom	1	
213		right	1	
214	✓	doors	1	✓



ID: EQUIPMENT SURVY 12 FEB 2001 14:13  
 USER: 3 COMMENT: EQUIPMENT SURVEY  
 PRESET TIME : 1.00  
 TA CALC : DL DPM H# : YES SAMPLE REPEATS: 1 PRINTER : EDIT  
 COUNT BLANK : YES IC# : NO REPLICATES : 1 RS232 : EDIT  
 TWO PHASE : NO AQC : YES CYCLE REPEATS : 1  
 SCINTILLATOR: LIQUID LUMEX: YES LOW SAMPLE REJ: 0  
 LOW LEVEL : NO HALF LIFE CORRECTION DATE: none

ISOTOPE 1: 3H %ERROR: 2.00 FACTOR: 1.0000 BKG. SUB: 0  
 ISOTOPE 2: 14C %ERROR: 2.00 FACTOR: 1.0000 BKG. SUB: 0  
 WIDE OPEN WINDOW %ERROR: 0.00 FACTOR: 1.0000 BKG. SUB: 0

BACKGROUND QUENCH CURVE: Off COLOR QUENCH CORRECTION: Off

Quench Limits Low: 13.688 High: 306.34

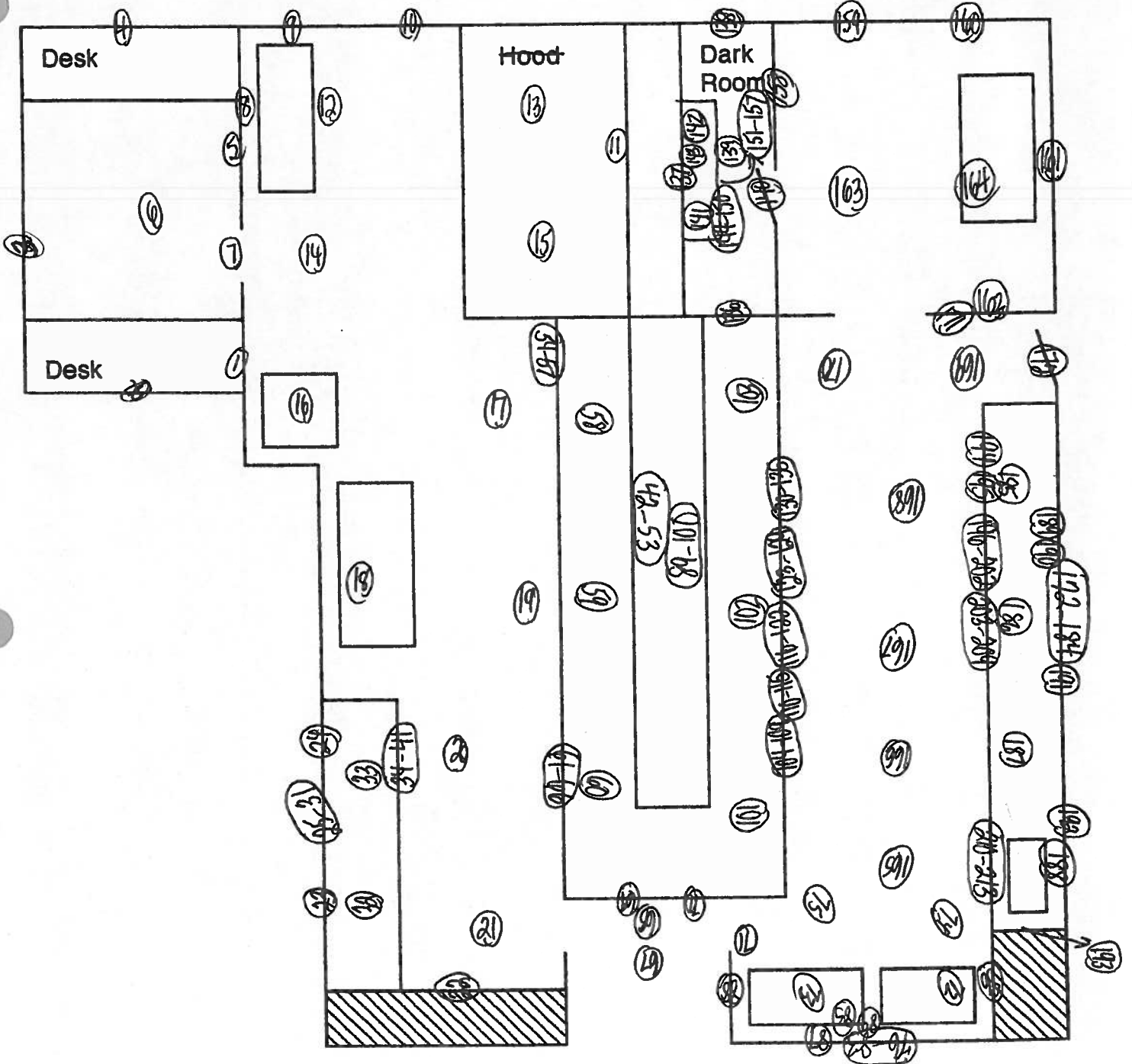
SAM NO	H#	3H CPM	14C CPM	WIDE CPM	3H DPM	14C DPM	LUMEX %	
B1	75.5	17.00	9.00	39.00	31.20	11.75	3.27	
		Blank Average DPM for		3H :	31.20	COEF. OF VAR:		0.000
		Blank Average DPM for		14C :	11.75	COEF. OF VAR:		0.000
1	74.1	17.00	8.00	37.00	0.30	-1.34	1.82	
2	73.0	18.00	10.00	43.00	1.23	1.31	1.69	
3	82.8	17.00	11.00	34.00	0.06	2.72	2.20	
4	74.2	18.00	10.00	35.00	1.41	1.31	2.06	
5	75.2	15.00	4.00	33.00	-1.71	-6.65	3.49	
6	86.8	22.00	8.00	37.00	13.43	-1.38	4.18	
7	72.9	24.00	9.00	44.00	14.18	-0.13	1.50	
8	78.5	8.00	13.00	27.00	-20.83	5.52	2.11	
9	75.8	16.00	8.00	33.00	-1.56	-1.32	2.66	
10	78.2	20.00	11.00	38.00	5.77	2.64	2.69	
11	75.9	24.00	10.00	43.00	14.30	1.22	1.46	
12	82.4	19.00	9.00	31.00	5.39	-0.00	2.89	
13	90.9	20.00	10.00	36.00	8.74	1.37	3.09	
14	88.3	11.00	12.00	38.00	-13.07	4.21	3.14	
15	84.0	15.00	5.00	31.00	-0.95	-5.30	3.97	
16	83.1	23.00	7.00	40.00	15.33	-2.75	5.03	
17	82.5	16.00	9.00	32.00	-1.11	0.05	3.48	
18	88.6	19.00	12.00	40.00	4.92	4.07	3.56	
19	87.8	18.00	16.00	41.00	0.36	9.46	3.15	
20	89.3	17.00	6.00	28.00	3.83	-3.97	5.19	
21	94.2	11.00	10.00	28.00	-11.39	1.55	8.49	
22	78.4	21.00	9.00	40.00	8.97	-0.05	1.19	
23	90.1	25.00	7.00	45.00	21.54	-2.77	1.93	
24	106.2	12.00	12.00	30.00	-8.78	4.33	3.40	
25	78.8	19.00	10.00	39.00	4.25	1.32	2.58	
26	75.0	18.00	10.00	38.00	1.52	1.32	1.58	
27	75.4	13.00	8.00	25.00	-7.91	-1.27	2.12	
28	74.6	12.00	5.00	36.00	-8.58	-5.27	1.11	
29	78.4	15.00	10.00	37.00	-4.35	1.39	2.67	
30	77.4	14.00	14.00	38.00	-8.65	6.75	2.94	
31	76.9	17.00	11.00	33.00	-0.82	2.68	1.88	
32	99.6	10.00	13.00	38.00	-14.95	5.67	6.70	
33	92.7	18.00	14.00	44.00	2.29	6.81	1.45	
34	80.9	25.00	9.00	41.00	18.09	-0.11	1.57	
35	78.4	20.00	8.00	35.00	7.35	-1.37	1.82	
36	78.4	27.00	10.00	46.00	21.26	1.19	1.34	

SAM NO	H#	3H CPM	14C CPM	WIDE CPM	3H DFM	14C DFM	LUMEX %
37	74.8	20.00	6.00	35.00	7.71	-4.06	2.27
38	76.8	18.00	13.00	39.00	0.26	5.34	1.46
39	77.9	17.00	8.00	32.00	0.87	-1.33	1.90
40	80.6	19.00	14.00	47.00	2.46	6.69	1.79
41	75.8	14.00	8.00	31.00	-5.77	-1.29	2.35
42	74.9	14.00	11.00	37.00	-7.39	2.72	1.55
43	79.9	16.00	11.00	42.00	-2.53	2.72	3.05
44	76.9	22.00	5.00	35.00	12.84	-5.43	2.03
45	79.3	19.00	5.00	36.00	6.94	-5.37	1.74
46	74.8	19.00	6.00	34.00	5.61	-4.05	1.87
47	79.1	16.00	13.00	34.00	-3.67	5.39	2.92
48	77.6	12.00	4.00	23.00	-7.75	-6.60	3.26
49	78.4	17.00	17.00	41.00	-3.69	10.73	1.72
50	77.4	16.00	9.00	33.00	-1.84	0.03	2.57
51	79.4	20.00	15.00	44.00	3.90	8.01	1.45
52	77.5	14.00	11.00	34.00	-7.10	2.74	2.77
53	85.7	22.00	13.00	48.00	10.49	5.34	1.54
54	84.5	16.00	10.00	31.00	-1.35	1.40	2.07
55	77.9	13.00	10.00	32.00	-8.67	1.42	2.00
56	80.9	12.00	16.00	40.00	-13.64	9.50	1.61
57	80.0	18.00	9.00	33.00	2.82	0.01	1.87
58	87.3	22.00	12.00	43.00	11.37	4.01	2.34
59	80.0	22.00	5.00	39.00	13.52	-5.42	1.76
60	132.3	7.00	14.00	21.00	-20.89	7.44	4.97
61	77.4	14.00	9.00	40.00	-6.08	0.06	0.96
62	76.6	17.00	11.00	33.00	-0.86	2.68	1.05
63	79.8	13.00	5.00	25.00	-5.87	-5.27	3.24
64	77.6	19.00	8.00	37.00	5.08	-1.36	1.41
65	79.5	18.00	10.00	43.00	2.22	1.34	0.91
66	77.8	15.00	11.00	35.00	-4.95	2.72	2.33
67	75.3	24.00	10.00	42.00	14.18	1.22	1.44
68	95.2	11.00	14.00	39.00	-13.56	6.96	5.99
69	101.7	19.00	20.00	51.00	2.80	15.01	2.05
70	87.8	26.00	6.00	42.00	23.69	-4.14	2.15
71	92.8	15.00	14.00	39.00	-4.60	6.87	4.51
72	92.8	20.00	7.00	36.00	10.81	-2.67	2.47
73	97.7	18.00	16.00	41.00	2.03	9.56	3.68
74	96.2	18.00	12.00	39.00	4.05	4.14	2.70
75	91.4	9.00	8.00	29.00	-15.12	-1.13	5.22
76	75.2	23.00	9.00	42.00	12.55	-0.10	1.06
77	78.0	14.00	6.00	32.00	-4.47	-3.95	3.12
78	79.8	13.00	7.00	30.00	-6.91	-2.59	2.18
79	78.1	21.00	6.00	31.00	10.46	-4.07	1.34
80	78.0	20.00	13.00	43.00	4.70	5.32	1.06
81	79.0	21.00	6.00	41.00	10.64	-4.07	1.37
82	79.3	17.00	8.00	39.00	1.09	-1.32	1.61
83	80.2	15.00	7.00	32.00	-2.56	-2.62	2.44
84	79.3	16.00	10.00	39.00	-2.09	1.38	1.31
85	82.6	19.00	12.00	47.00	3.85	4.03	2.14
86	81.8	14.00	5.00	26.00	-3.45	-5.28	2.22
87	78.4	21.00	12.00	45.00	7.42	3.97	1.51
88	80.7	17.00	14.00	47.00	-1.83	6.73	1.28
89	81.4	16.00	9.00	31.00	-1.27	0.05	2.83
90	76.8	18.00	7.00	30.00	3.33	-2.69	2.03
91	80.2	24.00	8.00	43.00	16.30	-1.43	1.64
92	77.8	27.00	11.00	43.00	20.58	2.52	1.50
93	80.9	30.00	5.00	48.00	30.99	-5.56	2.77
94	79.1	23.00	9.00	45.00	13.39	-0.08	1.32

SAM NO	H#	3H CFM	14C CFM	WIDE CFM	3H DFM	14C DFM	LUMEX %
75	76.2	20.00	6.00	30.00	7.97	-4.06	1.78
76	79.9	12.00	10.00	27.00	-10.60	1.45	2.21
97	80.8	19.00	9.00	36.00	5.11	-0.01	2.20
98	80.4	14.00	10.00	34.00	-6.24	1.42	1.70
99	81.2	16.00	5.00	30.00	0.79	-5.32	1.65
100	81.0	16.00	8.00	34.00	-0.81	-1.30	1.52
101	83.7	19.00	8.00	37.00	6.17	-1.34	0.85
102	81.7	23.00	16.00	50.00	10.27	9.32	1.45
103	95.0	18.00	13.00	45.00	3.26	5.48	15.32
104	79.0	23.00	13.00	38.00	11.30	5.28	1.67
105	81.0	20.00	14.00	41.00	4.70	6.68	1.63
106	80.4	18.00	4.00	31.00	5.49	-6.70	3.17
107	80.6	22.00	11.00	44.00	10.51	2.62	1.75
108	85.0	18.00	9.00	40.00	3.68	0.03	1.69
109	84.6	16.00	8.00	34.00	-0.27	-1.28	3.04
110	82.3	15.00	13.00	36.00	-5.43	5.43	1.35
111	78.0	21.00	8.00	40.00	9.39	-1.39	1.36
112	82.3	15.00	12.00	35.00	-4.90	4.09	2.52
113	78.7	23.00	11.00	49.00	12.25	2.59	1.09
114	78.7	18.00	11.00	37.00	1.57	2.68	1.41
115	78.6	17.00	11.00	41.00	-0.57	2.69	0.66
116	75.9	13.00	14.00	42.00	-10.91	6.75	1.34
117	77.1	19.00	9.00	40.00	4.48	-0.03	0.88
118	75.6	21.00	10.00	41.00	7.94	1.27	1.03
119	80.6	12.00	9.00	28.00	-10.02	0.11	1.51
120	78.1	17.00	14.00	44.00	-2.19	6.71	0.67
121	78.6	15.00	10.00	31.00	-4.32	1.39	1.25
122	82.3	18.00	9.00	31.00	3.20	0.02	1.22
123	77.5	26.00	8.00	44.00	19.92	-1.48	2.35
124	80.4	19.00	10.00	39.00	4.48	1.33	1.83
125	80.7	19.00	10.00	42.00	4.59	1.37	1.87
126	83.5	21.00	11.00	50.00	7.77	6.48	1.47
127	77.7	15.00	12.00	37.00	1.15	4.02	3.11
128	78.7	20.00	8.00	41.00	4.99	3.97	1.53
129	81.7	19.00	8.00	42.00	5.73	-1.35	1.20
130	81.7	25.00	16.00	48.00	14.62	9.29	0.98
131	82.3	19.00	11.00	39.00	4.33	2.68	1.76
132	83.5	27.00	8.00	49.00	23.64	-1.47	1.29
133	77.2	20.00	8.00	40.00	7.12	-1.38	1.34
134	82.4	18.00	16.00	43.00	-0.46	9.41	1.53
135	81.4	22.00	10.00	44.00	11.20	1.29	1.43
136	78.9	15.00	9.00	41.00	-3.77	0.05	1.42
137	77.3	16.00	5.00	27.00	0.19	-5.33	2.83
138	81.1	20.00	10.00	45.00	6.81	1.32	1.50
139	92.0	15.00	8.00	36.00	-1.35	-1.23	2.67
140	79.8	19.00	6.00	35.00	6.50	-4.03	1.91
141	96.3	22.00	15.00	48.00	11.72	8.12	3.90
142	93.1	8.00	10.00	29.00	-18.41	1.60	4.64
143	87.5	16.00	8.00	33.00	0.20	-1.27	4.02
144	78.5	14.00	10.00	37.00	-6.47	1.40	1.30
145	82.2	19.00	13.00	41.00	3.25	5.37	1.56
146	79.6	21.00	9.00	40.00	9.19	-0.05	1.84
147	84.3	16.00	11.00	36.00	-1.91	2.75	2.40
148	79.5	15.00	7.00	30.00	-2.65	-2.63	3.64
149	79.4	21.00	18.00	45.00	4.50	12.01	1.14
150	81.6	18.00	11.00	39.00	2.03	2.70	1.02
151	83.4	16.00	8.00	29.00	-0.45	-1.29	2.18
152	79.4	22.00	11.00	41.00	10.26	2.62	1.97

SAM NO	H#	3H CPM	14C CPM	WIDE CPM	3H DPM	14C DPM	LUMEX %
153	80.5	17.00	6.00	30.00	2.32	-4.00	1.41
154	82.6	18.00	13.00	36.00	1.15	5.39	1.12
155	82.9	19.00	6.00	31.00	7.07	-4.02	2.02
156	84.7	27.00	12.00	55.00	21.83	3.90	0.97
157	79.6	21.00	9.00	38.00	9.21	-0.05	0.97
158	81.0	21.00	18.00	47.00	4.77	12.03	1.56
159	81.6	26.00	11.00	50.00	19.39	2.56	1.28
160	79.9	19.00	11.00	38.00	3.91	2.67	1.10
161	79.9	25.00	8.00	45.00	18.38	-1.45	1.31
162	77.3	9.00	11.00	32.00	-17.73	2.82	1.65
163	100.3	21.00	12.00	47.00	12.03	4.11	6.04
164	135.0	19.00	19.00	50.00	11.44	14.10	1.32
165	93.7	13.00	17.00	41.00	-10.78	10.96	4.64
166	100.1	22.00	11.00	50.00	14.95	2.73	2.92
167	101.3	24.00	6.00	43.00	23.03	-4.08	16.21
168	97.6	24.00	5.00	39.00	22.53	-5.44	3.42
169	86.9	17.00	11.00	37.00	0.70	2.75	4.75
170	92.1	8.00	13.00	33.00	-20.15	5.64	3.49
171	84.3	22.00	7.00	44.00	13.40	-2.73	1.76
172	83.2	10.00	11.00	31.00	-15.18	2.84	2.06
173	84.1	16.00	9.00	31.00	-0.88	0.06	1.60
174	86.8	15.00	9.00	34.00	-2.69	0.09	2.66
175	91.3	16.00	8.00	32.00	0.81	-1.25	1.78
176	86.9	24.00	7.00	40.00	18.44	-2.76	2.54
177	85.7	23.00	9.00	44.00	14.85	-0.05	1.70
178	85.0	25.00	13.00	48.00	16.98	5.28	1.90
179	86.8	11.00	8.00	31.00	-11.04	-1.19	2.85
180	84.2	19.00	11.00	44.00	4.66	2.69	2.38
181	87.1	21.00	8.00	39.00	11.27	-1.36	2.38
182	89.2	23.00	13.00	46.00	13.49	5.35	1.60
183	88.9	17.00	12.00	42.00	0.48	4.11	1.65
184	90.6	21.00	9.00	42.00	11.50	0.00	2.02
185	90.9	16.00	10.00	33.00	-0.37	1.44	3.37
186	89.8	16.00	12.00	39.00	-1.63	4.13	2.26
187	95.5	18.00	11.00	41.00	4.49	2.78	2.13
188	87.2	13.00	12.00	34.00	-8.71	4.16	1.81
189	87.1	26.00	6.00	45.00	23.50	-4.14	1.62
190	88.9	21.00	4.00	39.00	13.87	-6.74	1.38
191	82.6	25.00	11.00	45.00	17.46	2.58	1.78
192	84.0	13.00	9.00	32.00	-7.47	0.11	2.16
193	83.8	18.00	9.00	33.00	3.47	0.02	2.20
194	86.1	10.00	18.00	36.00	-18.72	12.28	2.27
195	87.4	9.00	13.00	31.00	-18.16	5.58	1.76
196	86.2	18.00	10.00	37.00	3.34	1.38	1.67
197	84.4	19.00	15.00	40.00	2.57	8.07	1.46
198	84.2	16.00	10.00	41.00	-1.40	1.40	1.42
199	84.8	19.00	8.00	31.00	6.38	-1.33	1.87
200	86.2	23.00	14.00	50.00	12.29	6.67	1.11
201	87.4	14.00	12.00	32.00	-6.46	4.15	1.62
202	86.7	13.00	11.00	31.00	-8.23	2.81	2.65
203	82.8	16.00	8.00	35.00	-0.54	-1.29	1.25
204	83.6	15.00	12.00	34.00	-4.73	4.10	3.05
205	84.5	20.00	5.00	42.00	10.13	-5.38	1.79
206	84.1	16.00	11.00	35.00	-1.94	2.75	2.24
207	84.9	11.00	4.00	26.00	-9.10	-6.57	5.74
208	84.4	18.00	22.00	53.00	-3.37	17.49	1.00
209	86.8	13.00	9.00	33.00	-7.14	0.13	2.28
210	87.3	22.00	5.00	34.00	15.18	-5.41	2.17

SAM NO	H#	3H CPM	14C CPM	WIDE CPM	3H DPM	14C DPM	LUMEX %
1	85.4	10.00	9.00	27.00	-13.93	0.17	2.37
2	97.9	17.00	12.00	33.00	2.03	4.17	5.08
213	87.1	12.00	10.00	36.00	-9.87	1.49	2.05



Surveyed 100% of all lower surfaces using instrument #2.  
All areas were noted to be at a level of normal background.

O = wipe location