

### Radiological Survey Sheet

Job Location Officer Central Research Station 118N/N105 Page 1 of 22  
 Survey Purpose Radiological Assessment Date 2/2/01  
 Performed By Pam Jones (Print) Pam Jones (Sign)

Inst.(1) (Model/SN) <b>Beckman LS 6500</b> #7069448	Inst.(2) <u>Ludlum 2241-2</u> (Model/SN) # <u>163603</u>	Inst.(3) (Model/SN)
Det. <b>Internal</b> (Model/SN)	Det. <u>Ludlum 43-68</u> (Model/SN) # <u>PR149613</u>	Det. (Model/SN)
Eff. <b>See LSC Printout</b>	Eff. <u>~ 8% C14</u>	Eff.
Type rad. <b>β</b>	Type rad. <b>β</b>	Type rad.
Bkgd. <b>See LSC Printout</b>	Bkgd. <u>300cpm</u>	Bkgd.
Cal. Due: <u>8/12/00</u> <u>12/01</u>	Cal. Due <u>1/20/02</u>	Cal. due

No.	Time	Location	Inst. Used	Total Activity (dpm/100 cm <sup>2</sup> )
1.	1300	floor	1	See attached LSC Printout
2.		"	1	
3.		"	1	
4.		"	1	
5.		door	1	
6.		wall	1	
7.		"	1	
8.		"	1	
9.		"	1	
10.		"	1	
11.		"	1	
12.		door	1	
13.		"	1	
14.		"	1	
15.		"	1	
16.		"	1	
17.		"	1	
18.	✓	"	1	

Radiological Survey Continuation Sheet

Page 2 of 22  
Date 2/21/01

No.	Time	Location	Inst. Used	Total Activity (dpm/100 cm <sup>2</sup> )
19		Floor		
20		"	1	See attached LSC Printout
21		Wall	1	
22		Outside shelves	1	
23		Top shelf	1	
24		Bottom shelf	1	
25		Outside shelves	1	
26		Top shelf	1	
27		Bot. shelf	1	
28		Out. shelves	1	
29		Top shelf	1	
30		Bot. shelf	1	
31		Shelf counter	1	
32		"	1	
33		"	1	
34		counter	1	
35		"	1	
36		"	1	
37		"	1	
38		Out drawers	1	
39		Top drawer	1	
40		drawer	1	
41		"	1	
42		"	1	
43		Bot. drawer	1	
44		Out. drawers	1	
45		top drawer	1	
46	✓	drawer	1	✓

Radiological Survey Continuation Sheet

Page 3 of 22

Date 2/21/01

No.	Time	Location	Inst. Used	Total Activity (dpm/100 cm <sup>2</sup> )
47		drawer	1	See attached LSC Printout
48		"	1	
49		bot. drawer	1	
50		out. drawers	1	
51		top drawer	1	
52		drawer	1	
53		"	1	
54		"	1	
55		bot. drawer	1	
56		out. drawers	1	
57		top shelf	1	
58		bot. shelf	1	
59		wall	1	
60		"	1	
61		"	1	
62		floor	1	
63		"	1	
64		"	1	
65		"	1	
66		"	1	
67		"	1	
68		"	1	
69		floor	1	
70		"	1	
71		"	1	
72		"	1	
73		wall	1	
74	✓	"	1	✓

Radiological Survey Continuation Sheet

Page 4 of 22  
 Date 2/21/01

No.	Time	Location	Inst. Used	Total Activity (dpm/100 cm <sup>2</sup> )
75		wall	1	See attached LSC Printout
76		"	1	
77		"	1	
78		"	1	
79		floor	1	
80		"	1	
81		door	1	
82		wall	1	
83		"	1	
84		"	1	
85		"	1	
86		"	1	
87		"	1	
88		floor	1	
89		"	1	
90		door	1	
91		wall	1	
92		door	1	
93		wall	1	
94		"	1	
95		radiator	1	
96		wall	1	
97		"	1	
98		floor	1	
99		"	1	
100		"	1	
101		"	1	
102	✓	"	1	✓

Radiological Survey Continuation Sheet

Page 5 of 22

Date 2/21/01

No.	Time	Location	Inst. Used	Total Activity (dpm/100 cm <sup>2</sup> )
103		Floor	1	See attached LSC Printout
104		"	1	
105		"	1	
106		Wall	1	
107		"	1	
108		top cabinet	1	
109		"	1	
110		"	1	
111		out. drawers	1	
112		top drawer	1	
113		bot. drawer	1	
114		out. shelves	1	
115		top shelf	1	
116		bot. shelf	1	
117		Wall	1	
118		"	1	
119		radiator	1	
120		wall	1	
121		"	1	
122		"	1	
123		Floor	1	
124		"	1	
125		door	1	
126		wall	1	
127		out. shelves	1	
128		top shelf	1	
129		bot. shelf	1	
130		out. shelves	1	

Radiological Survey Continuation Sheet

Page 6 of 22

Date 2/21/01

No.	Time	Location	Inst. Used	Total Activity (dpm/100 cm <sup>2</sup> )
131		top shelf	1	See attached LSC Printout
132		bot. shelf	1	
133		out. shelves	1	
134		top shelf	1	
135		bot. shelf	1	
136		counter	1	
137		"	1	
138		"	1	
139		"	1	
140		out. drawers	1	
141		top drawer	1	
142		drawer	1	
143		"	1	
144		"	1	
145		bot. drawer	1	
146		out. cabinet	1	
147		top shelf	1	
148		bot. shelf	1	
149		out. drawers	1	
150		top drawer	1	
151		drawer	1	
152		"	1	
153		"	1	
154		"	1	
155		bot. drawer	1	
156		out. drawers	1	
157		top drawer	1	
158	✓	drawer	1	✓

Radiological Survey Continuation Sheet

Page 7 of 22

Date 2/21/01

No.	Time	Location	Inst. Used	Total Activity (dpm/100 cm <sup>2</sup> )
159		circumfer		
160		"	1	See attached LSC Printout
161		"	1	
162		out. circumfer	1	
163		floor	1	
164		"	1	
165		"	1	
166		"	1	
167		"	1	
168		"	1	
169		"	1	
170		"	1	
171		"	1	
172		"	1	
173		"	1	
174		"	1	
175		"	1	
176		wall	1	
177		"	1	
178		"	1	
179		" + pipe dryer	1	
180		out. shelves	1	
181		top shelf	1	
182		out. shelf	1	
183		out. shelves	1	
184		top shelf	1	
185		bot. shelf	1	
186	✓	out. shelves	1	↓

Radiological Survey Continuation Sheet

Page 9 of 22

Date 2/22/01

No.	Time	Location	Inst. Used	Total Activity (dpm/100 cm <sup>2</sup> )
187	800	top shelf		
188		bot. shelf	1	See attached LSC Printout
189		shelf counter	1	
190		"	1	
191		"	1	
192		counter	1	
193		"	1	
194		"	1	
195		"	1	
196		out. drawers	1	
197		top drawer	1	
198		drawer	1	
199		"	1	
200		"	1	
201		int. drawer	1	
202		out. cabinet	1	
203		top shelf	1	
204		bot. shelf	1	
205		out. drawers	1	
206		top drawer	1	
207		drawer	1	
208		"	1	
209		"	1	
210		out. drawer	1	
211		out. drawers	1	
212		top drawer	1	
213		drawer	1	
214		"	1	



Radiological Survey Continuation Sheet

Page 9 of 22

Date 2/22/01

No.	Time	Location	Inst. Used	Total Activity (dpm/100 cm <sup>2</sup> )
215		drawer		
216		bot. drawer	1	See attached LSC Printout
217		can	1	
218		shelf	1	
219		"	1	
220		Sink counter	1	
221		"	1	
222		"	1	
223		"	1	
224		Sides of sink	1	
225		bottom + drain	1	
226		cab. cabinet	1	
227		left inside cab.	1	
228		bottom	1	
229		right	1	
230		left outside hood	1	
231		top	1	
232		right	1	
233		glass + handles	1	
234		ledge	1	
235		left inside hood	1	
236		top back	1	
237		middle back	1	
238		bottom back	1	
239		right	1	
240		counter	1	
241		"	1	
242	✓	"	1	

Radiological Survey Continuation Sheet

Page 10 of 22

Date 2/22/01

No.	Time	Location	Inst. Used	Total Activity (dpm/100 cm <sup>2</sup> )
243		Cup Sink		
244		Out. Cabinet	1	See attached LSC Printout
245		Top Shelf	1	
246		Bot. Shelf	1	
247		Out. Cab.	1	
248		Top Shelf	1	
249		Bot. Shelf	1	
250		Floor	1	
251		"	1	
252		"	1	
253		"	1	
254		"	1	
255		Left door	1	
256		Right door	1	
257		Wall	1	
258		"	1	
259		"	1	
260		Shelf	1	
261		Light fixture	1	
262		Shelves (Loose parts)	1	
263		Out. Shelves	1	
264		Top Shelf	1	
265		Bot. Shelf	1	
266		Out. Shelves	1	
267		Top Shelf	1	
268		Bot. Shelf	1	
269		Out. Shelves	1	
270	✓	Top Shelf	1	↓

Radiological Survey Continuation Sheet

Page

22

Date

No.	Time	Location	Inst. Used	Total Acti (dpm/100 cm <sup>2</sup> )
271		bot. shelf		
272		counter	1	See attached LSC Printout
273		"	1	
274		"	1	
275		"	1	
276		out. drawers	1	
277		top drawer	1	
278		drawer	1	
279		"	1	
280		"	1	
281		bot. drawer	1	
282		out. drawers	1	
283		top drawer	1	
284		drawer	1	
285		"	1	
286		"	1	
287		bot. drawer	1	
288		out. drawers	1	
289		top drawer	1	
290		drawer	1	
291		"	1	
292		"	1	
293		bot. drawer	1	
294		outside cabinet	1	
295		top shelf	1	
296		bot. shelf	1	
297		floor	1	
298		"	1	

Radiological Survey Continuation Sheet

Page 12 of 22

Date 2/22/01

No.	Time	Location	Inst. Used	Total Activity (dpm/100 cm <sup>2</sup> )
299		Floor		
300		"	1	See attached LSC Printout
301		"	1	
302		"	1	
303		"	1	
304		"	1	
305		wall	1	
306		out. shelves	1	
307		top shelf	1	
308		shelf	1	
309		bot. shelf	1	
310		out. shelves	1	
311		top shelf	1	
312		shelf	1	
313		out. shelf	1	
314		out. shelves	1	
315		top shelf	1	
316		shelf	1	
317		bot. shelf	1	
318		<del>top shelf</del> out. shelves	1	
319		top shelf	1	
320		shelf	1	
321		bot. shelf	1	
322		shelf	1	
323		shelf	1	
324		wall	1	
325		"	1	
326		"	1	

Radiological Survey Continuation Sheet

Page 13 of 22

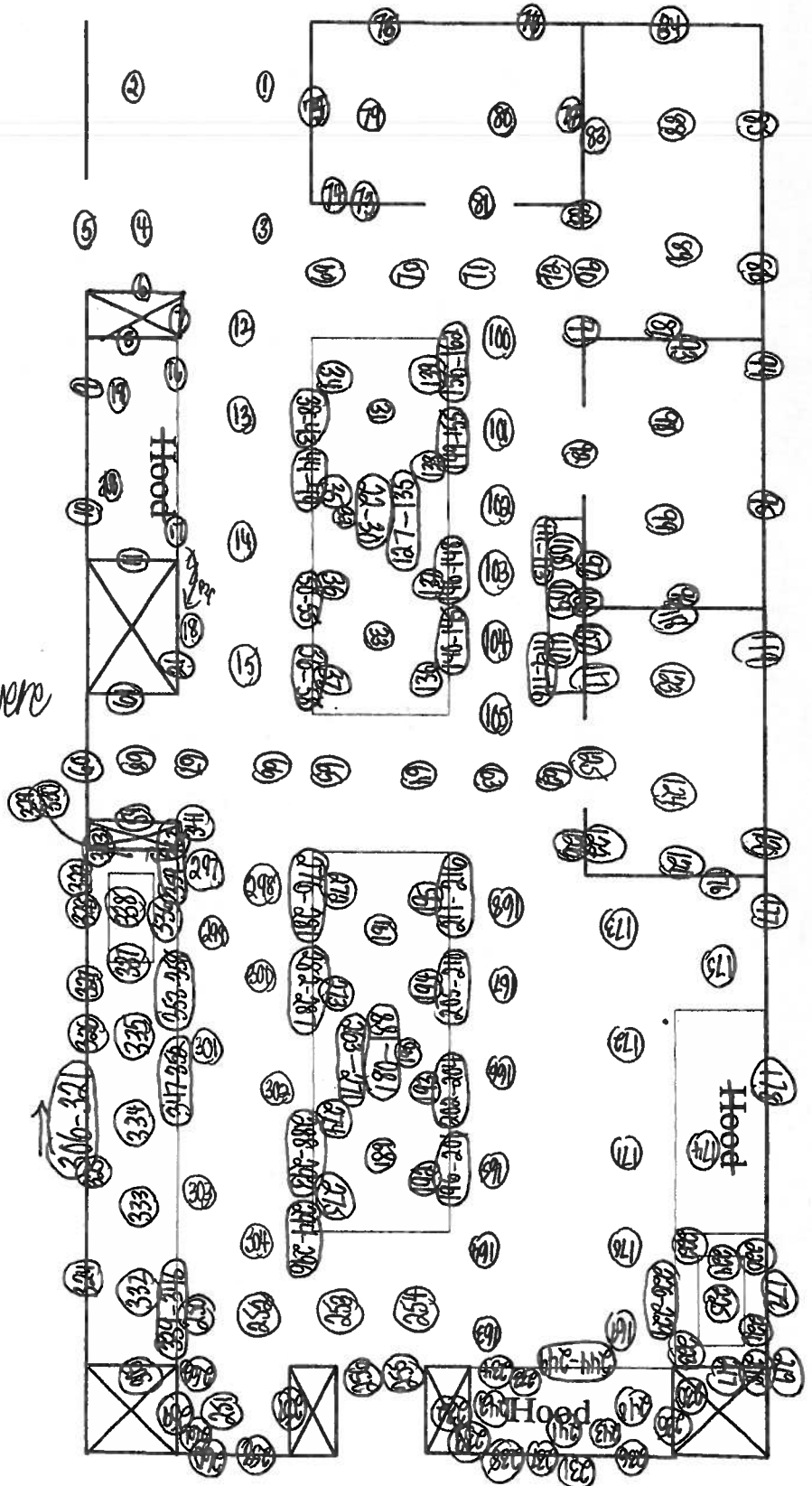
Date 2/22/01

No.	Time	Location	Inst. Used	Total Activity (dpm/100 cm <sup>2</sup> )
327		wall		
328		pipe dryer	1	See attached LSC Printout
329		shelf	1	
330		"	1	
331		wall	1	
332		counter	1	
333		"	1	
334		"	1	
335		"	1	
336		"	1	
337		Sides of sink	1	
338		bottom + drain	1	
339		out. drawers	1	
340		top left drawer	1	
341		drawer	1	
342		"	1	
343		top right drawer	1	
344		drawer	1	
345		"	1	
346		bottom drawer	1	
347		out. drawers	1	
348		top drawer	1	
349		drawer	1	
350		"	1	
351		"	1	
352		bot. drawer	1	
353		out. drawers	1	
354	✓	top drawer	1	✓



veyed 100% of all lower surfaces using instrument #2. All areas were found to be at a level of normal background.

O = wipe location



ID: EQUIPMENT SURVY

23 FEB 2001 14:53

USER: 1

COMMENT: EQUIPMENT SURVEY

RESET TIME : 1.00  
 DATA CALC : DL DPM H# : YES SAMPLE REPEATS: 1 PRINTER : EDIT  
 COUNT BLANK : YES IC# : NO REPLICATES : 1 RS232 : EDIT  
 TWO PHASE : NO ABC : YES CYCLE REPEATS : 1  
 SCINTILLATOR: LIQUID LUMEX: YES LOW SAMPLE REJ: 0  
 LOW LEVEL : NO HALF LIFE CORRECTION DATE: none

ISOTOPE 1: 3H %ERROR: 2.00 FACTOR: 1.0000 BKG. SUB: 0  
 ISOTOPE 2: 14C %ERROR: 2.00 FACTOR: 1.0000 BKG. SUB: 0  
 WIDE OPEN WINDOW %ERROR: 0.00 FACTOR: 1.0000 BKG. SUB: 0

BACKGROUND QUENCH CURVE: Off COLOR QUENCH CORRECTION: Off

Quench Limits Low: 13.688 High: 306.34

SAM NO	H#	3H CPM	14C CPM	WIDE CPM	3H DPM	14C DPM	LUMEX %	
B1	75.1	25.00	11.00	44.00	46.92	14.30	0.40	
		Blank Average DPM		for	3H :	46.92	COEF. OF VAR:	0.000
		Blank Average DPM		for	14C :	14.30	COEF. OF VAR:	0.000
1	91.2	13.00	8.00	30.00	-21.76	-3.74	2.21	
2	84.1	25.00	7.00	46.00	4.23	-5.32	1.34	
3	92.0	17.00	6.00	31.00	-11.38	-6.51	1.47	
4	87.7	11.00	9.00	29.00	-27.22	-2.38	1.12	
5	79.5	21.00	17.00	48.00	-10.69	8.13	0.47	
6	79.3	24.00	10.00	51.00	-0.67	-1.30	0.47	
7	73.3	14.00	10.00	32.00	-22.78	-1.17	0.56	
8	86.5	14.00	12.00	33.00	-22.29	1.60	0.59	
9	84.6	18.00	10.00	39.00	-12.65	-1.17	0.45	
10	84.8	17.00	11.00	36.00	-15.36	0.19	0.63	
11	84.1	14.00	8.00	43.00	-20.46	-3.79	0.40	
12	93.7	23.00	8.00	39.00	1.66	-3.91	1.36	
13	88.7	15.00	10.00	30.00	-18.68	-1.09	1.10	
14	86.0	15.00	9.00	28.00	-18.52	-2.45	1.28	
15	86.7	14.00	19.00	49.00	-26.06	11.02	0.64	
16	88.8	19.00	9.00	36.00	-9.12	-2.51	1.62	
17	87.6	13.00	7.00	23.00	-21.67	-5.10	1.13	
18	109.8	19.00	9.00	40.00	-4.44	-2.42	1.53	
19	106.2	11.00	12.00	28.00	-26.99	1.81	1.01	
20	100.4	24.00	7.00	45.00	6.47	-5.26	0.99	
21	82.4	23.00	11.00	46.00	-2.67	0.08	0.45	
22	79.9	16.00	10.00	38.00	-17.74	-1.16	0.44	
23	84.1	25.00	12.00	47.00	1.56	1.39	1.34	
24	87.8	18.00	12.00	43.00	-13.18	1.54	1.21	
25	77.8	29.00	10.00	45.00	9.63	-1.39	0.33	
26	84.0	14.00	12.00	34.00	-22.60	1.58	0.76	
27	94.9	9.00	11.00	32.00	-32.26	0.40	1.29	
28	77.3	19.00	5.00	30.00	-9.16	-7.92	0.51	
29	81.9	14.00	5.00	26.00	-19.17	-7.82	1.51	
30	95.5	18.00	10.00	44.00	-10.66	-1.11	1.11	
31	131.5	14.00	10.00	38.00	-13.38	-0.81	2.84	
32	121.2	11.00	8.00	31.00	-22.40	-3.56	3.00	
33	96.2	21.00	15.00	41.00	-6.37	5.60	1.01	
34	96.2	21.00	12.00	41.00	-4.65	1.54	1.52	
35	81.6	22.00	11.00	40.00	-5.02	0.09	2.17	
36	89.8	19.00	9.00	41.00	-8.92	-2.51	1.06	



SAM NO	H#	3H CPM	14C CPM	WIDE CPM	3H DPM	14C DPM	LUMEX %
37	89.4	20.00	8.00	39.00	-6.21	-3.87	0.67
38	79.1	18.00	7.00	28.00	-12.01	-5.22	0.60
39	79.0	17.00	6.00	33.00	-13.64	-6.54	0.73
40	77.7	21.00	14.00	50.00	-9.46	4.10	0.38
41	75.7	17.00	11.00	40.00	-16.70	0.13	0.65
42	75.0	21.00	11.00	39.00	-8.41	0.06	0.71
43	78.2	21.00	8.00	36.00	-6.27	-3.93	0.65
44	80.1	30.00	6.00	55.00	14.50	-6.76	0.46
45	78.1	16.00	8.00	31.00	-16.95	-3.85	0.89
46	75.8	21.00	9.00	44.00	-7.26	-2.60	0.49
47	76.2	24.00	16.00	53.00	-4.40	6.71	0.43
48	75.1	22.00	7.00	40.00	-4.27	-5.30	0.45
49	75.9	20.00	15.00	45.00	-12.38	5.44	0.40
50	88.4	16.00	12.00	38.00	-17.57	1.58	0.55
51	79.6	26.00	6.00	39.00	5.76	-6.69	0.32
52	78.2	10.00	13.00	35.00	-32.30	2.94	0.58
53	84.4	13.00	17.00	44.00	-27.41	8.32	0.40
54	89.7	9.00	9.00	35.00	-31.54	-2.33	0.63
55	81.7	20.00	7.00	32.00	-7.23	-5.24	0.56
56	77.9	18.00	10.00	44.00	-13.75	-1.21	0.58
57	79.1	32.00	9.00	48.00	16.93	-2.77	0.38
58	81.1	21.00	8.00	36.00	-5.72	-3.92	0.70
59	80.2	20.00	9.00	44.00	-8.56	-2.57	0.93
60	87.8	15.00	12.00	33.00	-19.89	1.59	0.73
61	83.3	15.00	12.00	35.00	-20.50	1.56	0.61
62	84.9	18.00	7.00	37.00	-11.00	-5.20	1.87
63	85.7	14.00	4.00	21.00	-17.95	-9.16	1.82
64	89.9	18.00	14.00	42.00	-13.92	4.28	1.71
65	87.6	17.00	8.00	31.00	-11.64	7.07	1.03
66	87.3	22.00	11.00	41.00	-3.81	6.17	1.51
67	82.4	12.00	4.00	27.00	-17.65	0.75	1.17
68	82.6	13.00	13.00	37.00	-11.11	3.00	1.33
69	81.2	17.00	7.00	39.00	-3.47	-3.88	1.07
70	81.7	17.00	9.00	38.00	-13.12	-2.46	0.94
71	87.1	18.00	11.00	44.00	-12.76	0.19	1.02
72	90.8	21.00	11.00	45.00	-5.29	0.16	1.90
73	80.0	25.00	8.00	44.00	2.67	-3.99	0.52
74	80.4	17.00	11.00	36.00	-16.02	0.16	0.54
75	77.8	26.00	17.00	48.00	-0.34	8.03	0.45
76	80.2	16.00	16.00	42.00	-20.82	6.88	0.57
77	83.8	15.00	13.00	34.00	-20.96	2.91	0.50
78	79.6	20.00	10.00	46.00	-9.19	-1.23	0.39
79	91.2	10.00	8.00	25.00	-28.59	-3.69	1.39
80	91.3	15.00	23.00	50.00	-25.52	16.45	2.11
81	75.5	20.00	10.00	45.00	-9.91	-1.25	0.46
82	76.2	20.00	12.00	37.00	-10.81	1.43	0.45
83	75.7	22.00	6.00	37.00	-3.65	-6.63	0.65
84	75.7	15.00	12.00	35.00	-21.42	1.50	0.65
85	82.9	22.00	11.00	41.00	-4.75	0.09	0.48
86	79.6	16.00	6.00	29.00	-15.70	-6.52	0.79
87	77.2	17.00	14.00	38.00	-18.03	4.16	0.44
88	87.5	15.00	8.00	32.00	-17.76	-3.79	1.44
89	96.5	22.00	7.00	36.00	0.62	-5.24	1.75
90	75.3	20.00	9.00	43.00	-9.45	-2.59	0.50
91	79.1	18.00	6.00	36.00	-11.49	-6.56	0.93
92	77.1	22.00	6.00	35.00	-3.35	-6.63	0.68
93	79.0	14.00	7.00	33.00	-20.59	-5.15	0.79
94	77.4	16.00	13.00	42.00	-19.61	2.84	0.50

SAM NO	H#	3H CPM	14C CPM	WIDE CPM	3H DPM	14C DPM	LUMEX %
95	90.2	16.00	7.00	35.00	-14.54	-5.15	0.89
96	77.7	25.00	12.00	48.00	0.08	1.35	0.40
97	78.6	16.00	9.00	38.00	-17.40	-2.51	0.66
98	96.3	17.00	15.00	45.00	-15.71	5.68	1.17
99	96.9	16.00	10.00	38.00	-15.09	-1.07	1.45
100	88.3	14.00	17.00	42.00	-24.80	8.35	1.35
101	93.9	16.00	10.00	40.00	-15.60	-1.08	1.95
102	83.0	17.00	8.00	38.00	-14.05	-3.85	1.23
103	85.6	21.00	9.00	39.00	-5.32	-2.56	0.67
104	99.3	15.00	14.00	44.00	-19.38	4.39	1.31
105	79.9	19.00	9.00	41.00	-10.77	-2.55	0.47
106	84.4	12.00	14.00	31.00	-28.01	4.31	1.00
107	83.9	17.00	10.00	41.00	-14.96	-1.16	0.51
108	82.5	16.00	9.00	32.00	-16.83	-2.49	0.98
109	82.8	26.00	11.00	47.00	3.96	0.03	0.72
110	79.6	23.00	10.00	39.00	-2.76	-1.28	0.47
111	78.2	20.00	11.00	35.00	-9.96	0.10	0.59
112	81.0	18.00	10.00	36.00	-13.25	-1.19	0.79
113	84.6	12.00	4.00	22.00	-22.66	-9.13	1.10
114	85.8	21.00	11.00	40.00	-6.34	0.13	0.53
115	91.5	13.00	14.00	34.00	-25.05	4.35	1.08
116	81.6	26.00	6.00	51.00	6.29	-6.69	0.61
117	79.7	15.00	8.00	29.00	-18.87	-3.83	0.95
118	90.0	12.00	9.00	34.00	-24.73	-2.38	1.57
119	78.6	24.00	16.00	51.00	-3.92	6.73	0.40
120	75.6	12.00	9.00	34.00	-26.23	-2.46	0.78
121	75.0	21.00	8.00	44.00	-6.89	-3.95	0.54
122	87.2	14.00	9.00	31.00	-20.58	-2.43	1.54
123	89.2	16.00	10.00	32.00	-16.36	-1.11	3.01
124	74.2	14.00	8.00	28.00	-21.68	-3.83	1.11
125	79.0	24.00	11.00	41.00	-1.26	0.04	0.56
126	78.7	17.00	10.00	35.00	-15.76	-1.19	0.49
127	78.4	16.00	10.00	32.00	-17.94	-1.17	0.58
128	84.1	15.00	10.00	33.00	-19.33	-1.12	0.70
129	85.7	23.00	15.00	47.00	-4.09	5.47	0.94
130	77.1	17.00	10.00	34.00	-15.99	-1.19	0.49
131	79.5	17.00	6.00	33.00	-13.57	-6.54	0.91
132	87.5	9.00	17.00	32.00	-36.06	8.42	1.73
133	75.5	24.00	3.00	32.00	2.04	-10.68	0.80
134	82.8	28.00	8.00	48.00	9.91	-4.03	0.38
135	92.2	14.00	16.00	38.00	-23.80	7.04	1.41
136	93.5	23.00	11.00	51.00	-0.09	0.14	1.44
137	89.0	13.00	10.00	26.00	-23.13	-1.06	1.28
138	89.1	15.00	10.00	40.00	-18.62	-1.09	1.22
139	86.4	21.00	13.00	40.00	-7.30	2.82	1.36
140	76.8	15.00	9.00	37.00	-19.76	-2.50	0.77
141	75.1	9.00	4.00	18.00	-30.05	-9.10	1.13
142	76.5	19.00	12.00	37.00	-12.88	1.44	0.66
143	76.9	23.00	11.00	43.00	-3.84	0.04	0.40
144	78.2	28.00	9.00	46.00	8.11	-2.71	0.44
145	76.9	16.00	9.00	30.00	-17.64	-2.52	0.68
146	75.6	18.00	10.00	40.00	-14.11	-1.22	0.62
147	78.5	20.00	12.00	43.00	-10.42	1.44	0.64
148	80.6	24.00	8.00	41.00	0.67	-3.97	0.59
149	77.7	21.00	15.00	42.00	-9.97	5.44	0.58
150	77.5	21.00	8.00	40.00	-6.41	-3.94	0.69
151	77.5	16.00	5.00	27.00	-15.51	-7.87	0.88
152	77.5	21.00	8.00	37.00	-6.42	-3.94	0.99

SAM NO	H#	3H CPM	14C CPM	WIDE CPM	3H DPM	14C DPM	LUMEX %
76.1		19.00	10.00	35.00	-11.93	-1.23	0.65
77.4		26.00	9.00	49.00	3.68	-2.68	0.68
155 80.1		22.00	9.00	38.00	-4.27	-2.60	0.52
156 80.2		13.00	12.00	46.00	-25.19	1.57	0.37
157 77.1		25.00	11.00	43.00	0.45	0.01	0.47
158 77.8		25.00	9.00	39.00	1.64	-2.66	0.40
159 76.1		17.00	9.00	32.00	-15.63	-2.54	0.66
160 77.1		15.00	4.00	33.00	-17.17	-9.19	0.58
161 77.9		20.00	6.00	41.00	-7.45	-6.59	0.50
162 79.1		17.00	12.00	36.00	-16.74	1.50	0.53
163 91.9		21.00	7.00	37.00	-2.82	-5.23	1.63
164 125.8		11.00	15.00	32.00	-26.53	6.11	1.62
165 94.4		18.00	10.00	34.00	-10.89	-1.12	2.23
166 94.1		27.00	6.00	38.00	12.15	-6.69	2.01
167 93.9		13.00	17.00	41.00	-26.48	8.43	1.56
168 88.2		14.00	15.00	36.00	-23.72	5.65	1.59
169 86.5		10.00	13.00	33.00	-31.72	3.01	0.77
170 87.8		22.00	6.00	39.00	-0.97	-6.61	1.07
171 86.6		18.00	11.00	41.00	-12.85	0.19	1.44
172 85.3		23.00	10.00	38.00	-1.50	-1.25	1.19
173 94.3		15.00	12.00	36.00	-18.97	1.64	1.39
174 95.8		16.00	9.00	31.00	-14.71	-2.42	2.39
175 106.9		23.00	11.00	50.00	3.56	0.21	1.56
176 82.3		21.00	13.00	46.00	-8.09	2.79	0.50
177 95.6		13.00	11.00	33.00	-22.87	0.34	0.94
178 98.0		17.00	12.00	35.00	-13.69	1.63	0.95
180 81.3		18.00	6.00	32.00	-16.87	-1.13	0.89
181 84.8		16.00	10.00	37.00	-11.11	-6.55	0.29
182 86.9		13.00	13.00	31.00	-17.03	-1.13	0.79
183 78.5		13.00	5.00	26.00	-25.01	2.97	0.81
184 79.8		24.00	12.00	43.00	-21.75	-7.82	0.90
185 87.2		14.00	10.00	29.00	-1.59	1.38	0.42
186 76.7		18.00	10.00	39.00	-21.12	-1.09	1.33
187 81.9		20.00	5.00	37.00	-13.94	-1.21	0.85
188 87.6		13.00	15.00	34.00	-6.13	-7.93	0.71
189 89.8		15.00	10.00	35.00	-26.03	5.66	0.91
190 114.2		14.00	11.00	33.00	-18.52	-1.09	0.96
191 99.7		21.00	7.00	38.00	-17.58	0.44	1.61
192 88.8		24.00	10.00	47.00	-0.89	-5.21	2.46
193 93.3		15.00	11.00	35.00	1.57	-1.25	0.90
194 91.8		22.00	13.00	43.00	-18.57	0.28	1.86
195 91.3		12.00	8.00	26.00	-3.91	2.84	4.11
196 80.9		18.00	8.00	36.00	-24.02	-3.72	3.91
197 83.3		33.00	6.00	46.00	-12.23	-3.87	1.07
198 83.2		17.00	9.00	36.00	22.03	-6.80	0.78
199 84.7		15.00	15.00	41.00	-14.54	-2.50	1.02
200 79.1		12.00	15.00	40.00	-21.92	5.60	0.67
201 83.9		20.00	9.00	36.00	-28.99	5.60	0.73
202 82.4		20.00	10.00	37.00	-7.86	-2.55	0.92
203 82.0		14.00	13.00	34.00	-8.67	-1.22	0.85
204 85.1		17.00	6.00	34.00	-23.36	2.91	0.63
205 83.7		19.00	10.00	42.00	-12.64	-6.53	1.68
206 82.6		14.00	7.00	35.00	-10.62	-1.19	0.65
207 82.6		16.00	10.00	36.00	-20.12	-5.14	1.13
208 83.5		17.00	13.00	41.00	-17.35	-1.15	0.72
209 85.0		26.00	7.00	46.00	-16.62	2.87	0.94
210 85.6		16.00	10.00	31.00	6.65	-5.34	0.62
					-16.91	-1.13	1.08

SAM NO	H#	3H CPM	14C CPM	WIDE CPM	3H DPM	14C DPM	LUMEX %
211	82.4	22.00	8.00	41.00	-3.27	-3.93	0.48
212	80.4	28.00	12.00	53.00	7.16	1.32	0.65
213	78.8	18.00	8.00	34.00	-12.58	-3.88	0.98
214	84.9	14.00	11.00	37.00	-21.96	0.24	1.10
215	81.4	20.00	9.00	37.00	-8.33	-2.56	0.69
216	82.7	17.00	10.00	39.00	-15.15	-1.16	1.33
217	80.7	21.00	7.00	36.00	-5.27	-5.26	0.66
218	89.5	12.00	6.00	26.00	-23.14	-6.43	1.99
219	86.6	18.00	4.00	35.00	-9.06	-9.23	0.84
220	88.1	19.00	7.00	31.00	-8.16	-5.21	2.54
221	96.4	21.00	11.00	35.00	-4.02	0.19	1.92
222	82.9	18.00	6.00	37.00	-10.82	-6.55	1.02
223	89.4	19.00	11.00	40.00	-10.10	0.19	1.06
224	84.0	20.00	13.00	47.00	-9.96	2.82	0.56
225	89.8	14.00	10.00	32.00	-20.77	-1.07	2.56
226	80.2	14.00	9.00	35.00	-21.48	-2.47	0.61
227	84.1	17.00	10.00	35.00	-14.94	-1.16	0.72
228	88.7	14.00	13.00	37.00	-22.57	2.96	0.98
229	82.0	17.00	14.00	42.00	-17.37	4.20	0.63
230	79.2	19.00	7.00	40.00	-9.86	-5.24	0.62
231	94.6	26.00	12.00	48.00	6.57	1.44	2.78
232	83.4	11.00	11.00	31.00	-28.70	0.29	1.97
233	94.9	20.00	9.00	39.00	-5.56	-2.50	1.24
234	95.4	19.00	12.00	39.00	-9.49	1.57	1.65
235	97.0	18.00	14.00	43.00	-12.66	4.31	1.25
236	118.5	18.00	13.00	45.00	-7.43	3.13	2.11
237	91.8	17.00	8.00	32.00	-12.53	-3.81	1.35
238	102.1	13.00	7.00	28.00	-19.63	-5.05	3.36
239	91.9	17.00	9.00	34.00	-13.08	-2.46	2.30
240	103.3	11.00	4.00	25.00	-22.53	-9.08	5.93
241	90.4	21.00	8.00	40.00	-3.73	-3.89	1.09
242	100.2	17.00	5.00	29.00	-9.18	-7.84	2.87
243	94.5	14.00	13.00	38.00	-21.83	3.01	1.33
244	79.4	14.00	11.00	40.00	-22.60	0.21	0.61
245	91.9	24.00	8.00	40.00	3.48	-3.94	1.63
246	88.6	16.00	9.00	35.00	-15.90	-2.46	0.97
247	92.1	21.00	8.00	43.00	-3.32	-3.88	0.72
248	103.6	18.00	10.00	45.00	-9.00	-1.07	2.51
249	92.6	23.00	11.00	45.00	-0.31	0.13	1.34
250	100.1	19.00	5.00	32.00	-4.42	-7.88	2.83
251	105.3	15.00	22.00	46.00	-23.30	15.32	1.44
252	96.0	26.00	10.00	42.00	8.13	-1.26	1.60
253	92.9	9.00	8.00	32.00	-30.73	-3.66	3.23
254	98.0	17.00	13.00	47.00	-14.27	2.98	1.40
255	81.7	18.00	12.00	34.00	-14.18	1.50	0.84
256	85.6	15.00	7.00	29.00	-17.50	-5.15	0.78
257	91.2	16.00	5.00	28.00	-13.25	-7.84	1.36
258	89.3	17.00	8.00	34.00	-12.98	-3.82	1.13
259	83.7	13.00	9.00	28.00	-23.31	-2.44	0.79
260	85.8	8.00	14.00	36.00	-36.74	4.39	0.86
261	90.6	14.00	9.00	30.00	-20.12	-2.41	1.32
262	88.0	14.00	12.00	34.00	-22.11	1.61	0.89
263	79.5	22.00	2.00	34.00	-0.77	-11.98	0.53
264	88.6	19.00	7.00	38.00	-8.07	-5.20	0.51
265	85.8	13.00	12.00	37.00	-24.60	1.61	0.99
266	79.1	18.00	10.00	39.00	-13.56	-1.20	0.50
267	85.8	11.00	13.00	28.00	-29.56	2.99	1.12
268	96.8	21.00	7.00	34.00	-1.65	-5.22	1.36

SAM NO	H#	3H CPM	14C CPM	WIDE CPM	3H DPM	14C DPM	LUMEX %
270	80.5	17.00	6.00	29.00	-13.41	-6.54	0.76
271	90.7	22.00	6.00	35.00	-0.28	-6.60	1.13
272	102.9	13.00	7.00	32.00	-19.51	-5.05	2.69
273	86.7	15.00	9.00	33.00	-18.43	-2.45	1.24
274	93.8	15.00	14.00	43.00	-20.17	4.34	1.62
275	98.9	15.00	11.00	34.00	-17.70	0.32	2.85
276	91.9	14.00	12.00	43.00	-21.60	1.64	0.97
277	80.9	15.00	9.00	32.00	-19.23	-2.48	0.61
278	78.4	21.00	13.00	43.00	-8.82	2.76	0.92
279	81.7	21.00	13.00	44.00	-8.21	2.79	0.60
280	77.3	22.00	11.00	38.00	-5.87	0.06	0.78
281	82.8	20.00	5.00	33.00	-5.96	-7.92	0.61
282	85.5	22.00	5.00	32.00	-0.97	-7.96	0.61
283	78.3	17.00	12.00	35.00	-16.85	1.49	0.74
284	80.1	18.00	15.00	41.00	-16.01	5.51	0.80
285	82.5	13.00	12.00	38.00	-24.95	1.59	0.41
286	84.4	14.00	10.00	39.00	-21.48	-1.10	0.60
287	84.7	18.00	10.00	38.00	-12.64	-1.17	0.85
288	85.0	14.00	16.00	36.00	-24.62	6.96	0.75
289	84.1	17.00	8.00	29.00	-13.86	-3.84	0.91
290	80.1	18.00	6.00	38.00	-11.32	-6.56	0.53
291	81.8	15.00	10.00	39.00	-19.63	-1.13	0.78
292	83.3	20.00	6.00	36.00	-6.38	-6.58	0.62
293	81.6	17.00	16.00	45.00	-18.48	6.88	1.02
294	84.6	18.00	8.00	36.00	-11.58	-3.86	0.97
295	80.6	19.00	14.00	44.00	-13.25	4.15	0.90
296	80.5	27.00	11.00	47.00	5.53	-0.00	0.54
297	86.4	18.00	9.00	40.00	-11.81	-2.50	1.16
298	89.9	19.00	16.00	46.00	-12.77	6.93	1.44
299	92.5	23.00	10.00	41.00	0.22	-1.22	1.22
300	91.6	18.00	9.00	39.00	-10.86	-2.48	2.58
301	94.1	16.00	10.00	38.00	-15.56	-1.08	1.19
302	94.3	15.00	14.00	41.00	-20.11	4.34	1.15
303	87.6	22.00	9.00	45.00	-2.64	-2.57	0.98
304	93.8	16.00	13.00	36.00	-17.30	2.97	2.72
305	92.4	12.00	12.00	28.00	-26.13	1.68	1.57
306	80.4	21.00	7.00	43.00	-5.33	-5.26	0.49
307	81.3	22.00	12.00	44.00	-5.59	1.43	0.32
308	88.0	16.00	9.00	33.00	-15.99	-2.46	0.79
309	82.5	14.00	9.00	32.00	-21.19	-2.46	1.03
310	88.1	14.00	14.00	39.00	-23.19	4.30	0.63
311	83.2	19.00	8.00	34.00	-9.65	-3.88	1.84
312	86.6	20.00	12.00	47.00	-8.95	1.50	0.84
313	87.6	16.00	12.00	36.00	-17.68	1.57	1.75
314	87.8	13.00	5.00	24.00	-20.57	-7.79	0.99
315	80.3	13.00	9.00	29.00	-23.61	-2.45	0.89
316	92.6	16.00	7.00	31.00	-14.12	-5.14	2.48
317	93.2	15.00	7.00	35.00	-16.32	-5.12	1.50
318	91.8	10.00	5.00	23.00	-26.86	-7.73	1.35
319	90.3	16.00	13.00	37.00	-17.84	2.94	0.72
320	84.9	17.00	5.00	37.00	-12.12	-7.87	1.04
321	92.1	15.00	9.00	35.00	-17.62	-2.42	1.52
322	92.5	13.00	14.00	43.00	-24.94	4.36	0.99
323	97.7	13.00	6.00	27.00	-19.71	-6.42	4.38
324	90.0	12.00	9.00	34.00	-24.72	-2.38	1.23
325	85.6	20.00	13.00	42.00	-9.67	2.83	0.59
326	89.2	15.00	7.00	29.00	-16.96	-5.13	0.74
327	88.5	17.00	11.00	37.00	-14.77	0.22	1.59

SAM NO	H#	3H CPM	14C CPM	WIDE CPM	3H DFM	14C DFM	LUMEX %
327	87.0	16.00	7.00	35.00	-15.07	-5.16	1.13
328	84.3	18.00	8.00	35.00	-11.64	-3.86	1.17
329	92.5	8.00	10.00	36.00	-34.17	-0.95	1.26
330	91.5	19.00	12.00	40.00	-10.25	1.55	1.59
331	85.0	9.00	5.00	27.00	-29.75	-7.73	1.59
332	89.9	20.00	10.00	36.00	-7.19	-1.18	1.23
333	87.5	16.00	11.00	35.00	-17.17	0.23	1.22
334	87.0	20.00	14.00	42.00	-9.95	4.19	1.39
335	88.4	15.00	10.00	33.00	-18.72	-1.10	1.68
336	102.1	18.00	10.00	33.00	-9.31	-1.07	2.64
337	83.0	18.00	8.00	31.00	-11.87	-3.86	1.06
338	89.8	21.00	10.00	47.00	-4.96	-1.19	2.91
339	83.7	22.00	2.00	28.00	0.20	-11.99	1.63
340	81.3	15.00	6.00	29.00	-17.59	-6.50	1.19
341	85.8	18.00	10.00	33.00	-12.44	-1.16	0.88
342	83.7	15.00	8.00	34.00	-18.31	-3.81	0.65
343	81.7	17.00	10.00	39.00	-15.31	-1.17	1.38
344	83.1	14.00	9.00	33.00	-21.11	-2.45	1.00
345	83.5	18.00	9.00	37.00	-12.31	-2.52	0.96
346	83.3	17.00	10.00	35.00	-15.05	-1.16	1.26
347	80.2	16.00	11.00	39.00	-18.21	0.18	0.99
348	83.4	13.00	8.00	30.00	-22.73	-3.78	0.78
349	84.5	15.00	16.00	42.00	-22.47	6.94	0.56
350	83.6	17.00	12.00	39.00	-16.08	1.53	1.14
351	83.5	19.00	7.00	35.00	-9.05	-5.22	1.03
352	84.4	22.00	10.00	38.00	-3.90	-1.24	1.03
353	84.3	22.00	6.00	35.00	-1.79	-6.61	0.91
354	83.5	15.00	12.00	34.00	-20.47	1.56	1.26
355	86.5	23.00	12.00	44.00	-2.29	1.44	0.51
356	82.2	21.00	9.00	37.00	-6.02	-2.58	1.46
357	83.5	17.00	10.00	32.00	-15.04	-1.16	1.08
358	89.1	22.00	11.00	41.00	-3.41	0.13	0.74
359	84.7	17.00	11.00	41.00	-15.37	0.19	0.77
360	84.3	12.00	12.00	34.00	-26.95	1.62	0.84
361	90.6	19.00	10.00	37.00	-9.32	-1.15	1.03
362	83.9	20.00	6.00	40.00	-6.27	-6.58	0.73