

## Radiological Survey Sheet

Job Location Pfizer Central Research Groton 118N/N104 Page 1 of 15  
 Survey Purpose Radiological Assessment Date 2/20/01  
 Performed By Pam Jones (Print) Pam Jones (Sign)

<b>Inst.(1)</b> (Model/SN) <b>Beckman LS 6500</b> #7069448	<b>Inst.(2)</b> Ludlum 2241-2 (Model/SN) #163603	<b>Inst.(3)</b> (Model/SN)
<b>Det.</b> (Model/SN) <b>Internal</b>	<b>Det.</b> Ludlum 43-68 (Model/SN) # PR149613	<b>Det.</b> (Model/SN)
<b>Eff.</b> See LSC Printout	<b>Eff.</b> $\approx 8\%$ CI4	<b>Eff.</b>
<b>Type rad.</b> $\beta$	<b>Type rad.</b> $\beta$	<b>Type rad.</b>
<b>Bkgd.</b> See LSC Printout	<b>Bkgd.</b> 310 cpm	<b>Bkgd.</b>
<b>Cal. Due:</b> 12/00/01	<b>Cal. Due</b> 1/20/02	<b>Cal. due</b>

No.	Time	Location	Inst. Used	Total Activity (dpm/100 cm <sup>2</sup> )
1.	9:00	counter	1	See attached LSC Printout
2.		"	1	
3.		"	1	
4.		"	1	
5.		"	1	
6.		"	1	
7.		wall	1	
8.		floor	1	
9.		"	1	
10.		"	1	
11.		"	1	
12.		"	1	
13.		outside drawers	1	
14.		top drawer	1	
15.		drawer	1	
16.		"	1	
17.		"	1	
18.	✓	bottom drawer	1	✓

Radiological Survey Continuation S

Page 2 of 15

Date 2/20

No.	Time	Location	Inst. Used	Total Activity (dpm/100 cm <sup>2</sup> )
19		out. drawers		
20		top left drawer	1	See attached LSC Printout
21		drawer	1	
22		"	1	
23		top right drawer	1	
24		drawer	1	
25		"	1	
26		bot. drawer	1	
27		out. drawers	1	
28		top left drawer	1	
29		drawer	1	
30		"	1	
31		top rt. drawer	1	
32		drawer	1	
33		"	1	
34		bot. drawer	1	
35		out. drawers	1	
36		top drawer	1	
37		drawer	1	
38		"	1	
39		"	1	
40		bot. drawer	1	
41		right drawers outside	1	
42		drawer (top)	1	
43		drawer	1	
44		"	1	
45		bot. drawer	1	
46	✓	bot. drawer	1	

Radiological Survey Continuation Sheet

Page 3 of 15

Date 2/20/01

No.	Time	Location	Inst. Used	Total Activity (dpm/100 cm <sup>2</sup> )
47		out. shelves		
48		top shelf	1	See attached LSC Printout
49		shelf	1	
50		bot. shelf	1	
51		out. shelves	1	
52		top shelf	1	
53		shelf	1	
54		bot. shelf	1	
55		out. shelves	1	
56		top shelf	1	
57		shelf	1	
58		bot. shelf	1	
59		counter	1	
60		"	1	
61		"	1	
62		shelf	1	
63		top shelf	1	
64		bot. shelf	1	
65		out. drawers	1	
66		top drawer	1	
67		drawer	1	
68		"	1	
69		"	1	
70		"	1	
71		bot. drawer	1	
72		out. drawers	1	
73		top drawer	1	
74	✓	drawer	1	✓

Radiological Survey Continuation Sheet

Page 4 of 15  
 Date 2/20/01

No.	Time	Location	Inst. Used	Total Activity (dpm/100 cm <sup>2</sup> )
75		dinner		
76		"	1	See attached LSC Printout
77		"	1	
78		bot. dinner	1	
79		out. drawers	1	
80		top dinner	1	
81		dinner	1	
82		"	1	
83		"	1	
84		bot. dinner	1	
85		out. drawers	1	
86		top dinner	1	
87		top shelf	1	
88		bot. shelf	1	
89		floor	1	
90		"	1	
91		"	1	
92		"	1	
93		"	1	
94		white shelf unit	1	
95		wall	1	
96		"	1	
97		"	1	
98		out. shelves	1	
99		top shelf	1	
100		shelf	1	
101		bot. shelf	1	
102	✓	out. shelves	1	

Radiological Survey Continuation Sheet

Page 5 of 15  
 Date 2/20/01

No.	Time	Location	Inst. Used	Total Activity (dpm/100 cm <sup>2</sup> )
103		Top shelf		
104		shelf	1	See attached LSC Printout
105		bot. shelf	1	
106		out. drawers	1	
107		Top shelf	1	
108		shelf	1	
109		bot. shelf	1	
110		counter	1	
111		"	1	
112		"	1	
113		out. drawers	1	
114		top drawer	1	
115		drawer	1	
116		"	1	
117		"	1	
118		bot. drawer	1	
119		out. drawers	1	
120		top drawer	1	
121		top shelf	1	
122		bot. shelf	1	
123		out. drawers	1	
124		top drawer	1	
125		drawer	1	
126		"	1	
127		"	1	
128		"	1	
129		bot. drawer	1	
130	✓	out. drawers	1	

Radiological Survey Continuation Sheet

Page 6 of 15

Date 2/20/01

No.	Time	Location	Inst. Used	Total Activity (dpm/100 cm <sup>2</sup> )
131		top drawer		
132		drawer	1	See attached LSC Printout
133		"	1	
134		"	1	
135		"	1	
136		bot. drawer	1	
137		top shelf	1	
138		bot. shelf	1	
139		Floor	1	
140		"	1	
141		"	1	
142		"	1	
143		out. shelved	1	
144		top shelf	1	
145		shelf	1	
146		bot. shelf	1	
147		out. shelved	1	
148		top shelf	1	
149		shelf	1	
150		bot. shelf	1	
151		out. shelved	1	
152		top shelf	1	
153		shelf	1	
154		bottom shelf	1	
155		shelf	1	
156		counter	1	
157		"	1	
158	✓	"	1	
			1	✓

Radiological Survey Continuation Sheet

Page 7 of 15

Date 2/20/01

No.	Time	Location	Inst. Used	Total Activity (dpm/100 cm <sup>2</sup> )
159		top shelf		
160		bot. shelf	1	See attached LSC Printout
161		out. drawers	1	
162		top drawer	1	
163		drawer	1	
164		"	1	
165		"	1	
166		"	1	
167		bot. drawer	1	
168		out. drawers	1	
169		top drawer	1	
170		drawer	1	
171		"	1	
172		"	1	
173		"	1	
174		bot. drawer	1	
175		out. drawers	1	
176		top left drawer	1	
177		drawer	1	
178		top rt. drawer	1	
179		drawer	1	
180		"	1	
181		"	1	
182		bot. drawer	1	
183		out. shelves	1	
184		top shelf	1	
185		shelf	1	
186	✓	bot. shelf	1	



Radiological Survey Continuation Sheet

Page 8 of 15

Date 2/20/01

No.	Time	Location	Inst. Used	Total Activity (dpm/100 cm <sup>2</sup> )
187		Out. Shelf		
188		Top Shelf	1	See attached LSC Printout
189		Shelf	1	
190		bot. Shelf	1	
191		Out. Shelf	1	
192		Top Shelf	1	
193		Shelf	1	
194		bot. Shelf	1	
195		Crumbler	1	
196		"	1	
197		"	1	
198		Out. drawers	1	
199		Top left drawer	1	
200		drawer	1	
201		"	1	
202		Top rt. drawer	1	
203		drawer	1	
204		4th drawer	1	
205		bot. drawer	1	
206		Out. drawers	1	
207		Top drawer	1	
208		drawer	1	
209		"	1	
210		"	1	
211		"	1	
212		bot. drawer	1	
213		Out. drawers	1	
214		top drawer	1	

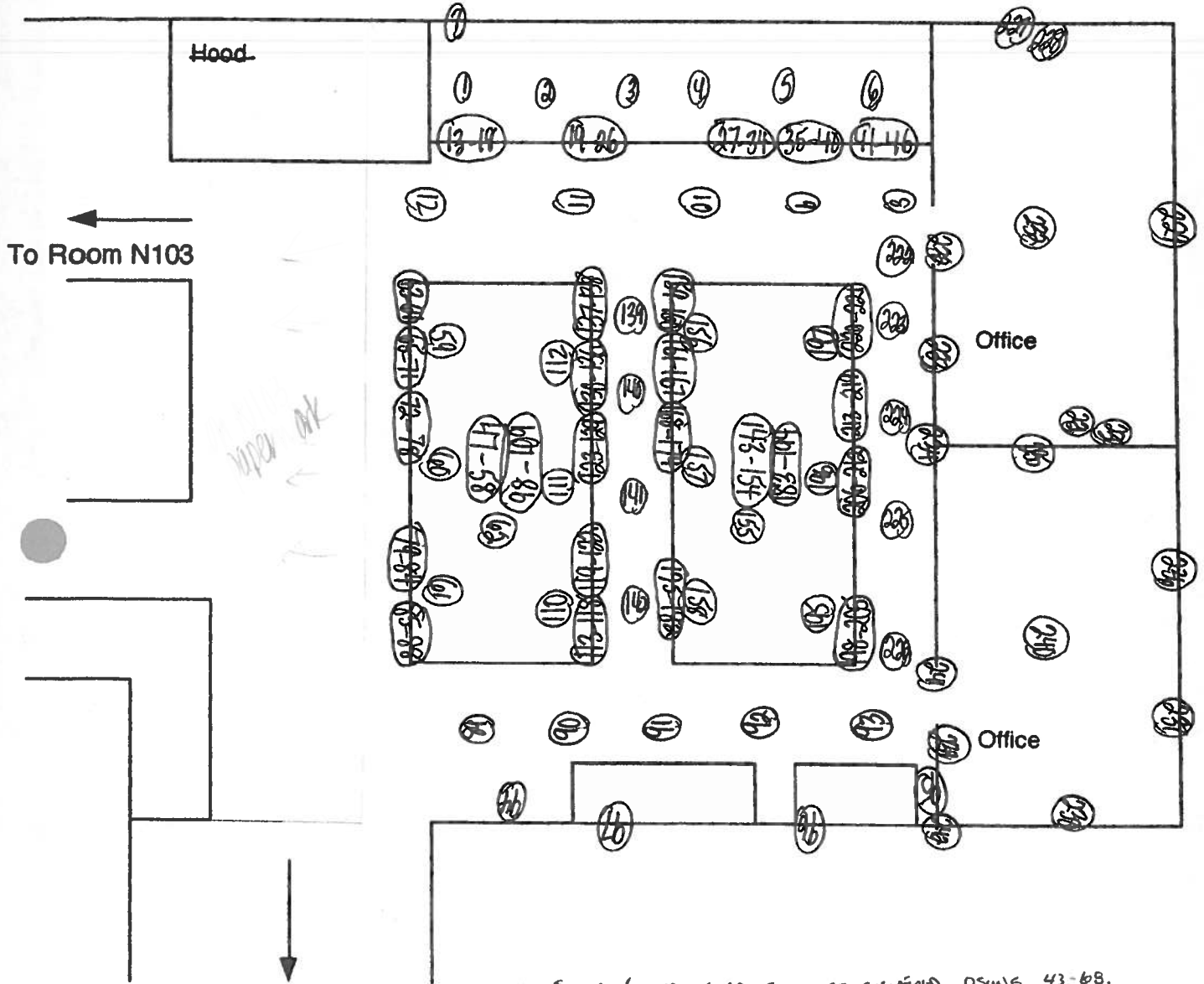


Radiological Survey Continuation Sheet

Page 9 of 11

Date 21 / 11

No.	Time	Location	Inst. Used	Total Activity (dpm)
215		drawer		
216		"	1	See attached LSC Printout
217		"	1	
218		"	1	
219		bot. drawer	1	
220		top shelf	1	
221		bot. shelf	1	
222		floor	1	
223		"	1	
224		"	1	
225		"	1	
226		"	1	
227		shelves	1	
228		desk	1	
229		wall	1	
230		shelves	1	
231		desk	1	
232		floor	1	
233		door	1	
234		wall	1	
235		"	1	
236		"	1	
237		"	1	
238		"	1	
239		"	1	
240		floor	1	
241		door	1	
242		wall	1	



100% of lower surfaces were surveyed using 43-68.  
no readings were noted in excess of normal background levels.

O = wipe location

20 FEB 2001 15:04

ID: MONTHLY WIPES

USER: 4  
 PRESET TIME : 1.00  
 A CALC : DL DPM H# : YES  
 COUNT BLANK : YES IC# : NO  
 TWO PHASE : NO AQC : YES  
 SCINTILLATOR: LIQUID LUMEX: YES  
 LOW LEVEL : NO HALF LIFE CORRECTION DATE:

SAMPLE REPEATS: 1  
 REPLICATES : 1  
 CYCLE REPEATS : 1  
 LOW SAMPLE REJ: 0  
 CORRECTION DATE: none  
 PRINTER : EDIT  
 RS232 : EDIT

ISOTOPE 1: 3H %ERROR: 2.00 FACTOR: 1.0000 BKG. SUB: 0  
 ISOTOPE 2: 14C %ERROR: 2.00 FACTOR: 1.0000 BKG. SUB: 0  
 WIDE OPEN WINDOW %ERROR: 0.00 FACTOR: 1.0000 BKG. SUB: 0

BACKGROUND QUENCH CURVE: Off COLOR QUENCH CORRECTION: Off  
 Quench Limits Low: 13.688 High: 306.34

SAM NO	H#	3H CPM	14C CPM	WIDE CPM	3H DPM	14C DPM	RATIO	LUMEX %
B1	74.5	22.00	11.00	47.00	40.52	14.34	2.825	1.91
		Blank Average	DPM	for	3H :	40.52 COEF.	OF VAR:	0.000
		Blank Average	DPM	for	14C :	14.34 COEF.	OF VAR:	0.000
1	85.4	10.00	8.00	30.00	-22.72	-3.76	6.040	4.44
2	84.1	16.00	12.00	36.00	-11.79	1.50	-7.849	2.73
3	83.9	8.00	1.00	16.00	-23.52	-13.14	1.790	6.06
4	88.4	10.00	10.00	28.00	-23.54	-1.05	22.346	3.59
5	83.3	24.00	5.00	37.00	9.29	-8.04	-1.156	2.19
6	81.5	20.00	9.00	38.00	-1.92	-2.61	0.734	2.62
7	85.2	15.00	13.00	37.00	-14.38	2.87	-5.008	1.89
8	82.8	22.00	8.00	44.00	3.21	-3.98	-0.808	1.78
9	83.9	26.00	12.00	44.00	10.10	1.33	7.595	1.84
10	79.6	13.00	7.00	29.00	-16.26	-5.18	3.139	3.28
11	82.8	16.00	10.00	38.00	-10.92	-1.19	9.167	3.15
12	91.1	23.00	14.00	49.00	4.07	4.12	0.986	2.44
13	76.9	18.00	16.00	41.00	-10.58	6.77	-1.562	1.53
14	79.5	17.00	8.00	30.00	-8.21	-3.91	2.102	0.59
15	75.5	16.00	13.00	38.00	-13.46	2.78	-4.846	4.93
16	75.8	15.00	9.00	33.00	-13.49	-2.55	5.287	2.30
17	75.8	18.00	11.00	37.00	-8.19	0.07	-112.3	3.35
18	74.0	22.00	12.00	41.00	-0.60	1.33	-0.449	1.97
19	74.8	12.00	8.00	29.00	-19.40	-3.85	5.047	1.54
20	73.0	24.00	7.00	37.00	5.87	-5.38	-1.090	1.44
21	74.6	26.00	5.00	41.00	11.41	-8.08	-1.412	0.60
22	76.7	19.00	10.00	45.00	-5.43	-1.28	4.256	2.21
23	72.8	21.00	10.00	38.00	-1.91	-1.33	1.435	2.95
24	75.5	14.00	9.00	31.00	-15.63	-2.54	6.161	1.42
25	71.9	15.00	8.00	36.00	-13.48	-3.91	3.450	1.65
26	74.4	9.00	7.00	24.00	-25.22	-5.13	4.911	2.58
27	73.9	18.00	7.00	33.00	-6.46	-5.28	1.223	1.36
28	74.2	20.00	6.00	37.00	-1.73	-6.65	0.260	3.73
29	75.1	19.00	2.00	34.00	-1.64	-11.98	0.137	2.56
30	76.4	28.00	12.00	51.00	12.51	1.25	10.010	1.67
31	74.5	21.00	7.00	35.00	-0.08	-5.33	0.014	1.54
32	75.0	17.00	9.00	40.00	-9.39	-2.59	3.627	1.30
33	75.8	15.00	17.00	45.00	-17.55	8.15	-2.155	2.13
34	76.1	16.00	7.00	31.00	-10.32	-5.24	1.969	1.66
35	75.3	15.00	8.00	28.00	-13.04	-3.89	3.352	1.12
36	72.3	21.00	6.00	31.00	-0.00	-6.67	0.000	2.45

SAM NO	H#	3H CPM	14C CPM	WIDE CPM	3H DPM	14C DPM	RATIO	LUMEX %
37	73.7	20.00	18.00	49.00				
38	75.2	17.00	9.00	35.00	-7.84	9.38	-0.836	1.08
39	76.8	19.00	4.00	73.00	-9.36	-2.59	3.618	1.53
40	74.7	18.00	12.00	37.00	-2.34	-9.30	0.250	2.73
41	75.4	24.00	14.00	37.00	-14.92	1.47	10.15	2.17
42	74.7	18.00	18.00	46.00	2.86	3.98	0.717	1.33
43	76.2	22.00	11.00	45.00	-16.50	5.47	-3.014	1.59
44	73.9	22.00	10.00	41.00	0.31	0.01	31.961	0.92
45	75.2	10.00	8.00	23.00	0.38	-1.34	-0.286	1.15
46	75.4	26.00	14.00	49.00	-23.56	-3.81	6.184	3.46
47	75.2	23.00	12.00	50.00	7.05	3.95	1.786	1.23
48	79.0	25.00	10.00	51.00	1.71	1.32	1.293	0.88
49	76.7	23.00	8.00	40.00	7.79	-1.36	-5.714	0.81
50	77.4	18.00	13.00	38.00	4.05	-4.02	-1.009	2.97
51	75.7	17.00	14.00	44.00	-8.98	2.76	-3.253	1.70
52	77.5	19.00	9.00	37.00	-11.83	4.10	-2.885	1.47
53	81.8	15.00	14.00	40.00	-4.77	-2.61	1.830	1.63
54	78.4	15.00	12.00	35.00	-15.33	4.19	-3.663	2.07
55	78.4	14.00	11.00	36.00	-14.71	1.48	-9.952	1.30
56	78.2	26.00	11.00	47.00	-16.32	0.16	-104.8	1.35
57	76.4	11.00	10.00	29.00	9.22	-0.04	-205.8	1.10
58	85.5	14.00	10.00	33.00	-22.38	-1.15	19.528	2.00
59	80.4	20.00	15.00	46.00	-14.95	-1.14	13.094	1.55
60	84.9	16.00	7.00	29.00	-5.25	5.43	-0.967	3.46
61	84.9	15.00	7.00	36.00	-9.01	-5.21	1.729	2.71
62	89.5	24.00	9.00	38.00	-11.21	-5.19	2.159	1.54
63	77.8	20.00	13.00	39.00	8.71	-2.64	-3.296	1.83
64	82.3	19.00	17.00	48.00	-4.65	2.73	-1.705	1.25
65	78.3	8.00	8.00	28.00	-8.16	8.15	-1.001	1.19
66	76.7	10.00	6.00	20.00	-27.59	-3.76	7.332	0.64
67	74.4	23.00	10.00	39.00	-22.42	-6.48	3.461	2.14
68	78.9	25.00	14.00	50.00	2.57	-1.35	-1.902	1.09
69	77.8	21.00	10.00	41.00	5.71	3.99	1.400	0.77
70	76.6	30.00	5.00	45.00	-0.98	-1.30	8.754	1.05
71	75.3	22.00	9.00	38.00	20.37	-6.18	-2.501	1.32
72	75.1	20.00	11.00	28.00	1.16	-2.67	3.475	0.79
73	77.4	19.00	11.00	29.00	-4.09	0.04	-1.100	2.10
74	75.7	16.00	7.00	27.00	-5.73	0.07	83.100	0.91
75	75.7	17.00	7.00	31.00	-10.35	-5.24	1.974	1.05
76	75.6	16.00	7.00	40.00	-15.13	-3.87	3.904	0.90
77	77.1	19.00	7.00	45.00	-10.25	-5.24	1.956	0.93
78	76.1	15.00	11.00	30.00	-3.83	-5.29	0.725	0.82
79	74.4	8.00	11.00	29.00	-14.47	0.12	-116.8	2.45
80	77.6	23.00	10.00	41.00	-29.33	0.23	-129.5	1.83
81	75.4	18.00	10.00	43.00	3.23	-1.34	-2.420	1.15
82	78.0	20.00	10.00	36.00	-7.74	-1.27	6.109	1.04
83	78.1	19.00	6.00	34.00	-3.07	-1.28	2.393	0.86
84	77.0	21.00	9.00	39.00	-3.14	-6.62	0.474	1.65
85	76.6	22.00	9.00	44.00	-0.63	-2.64	0.236	1.15
86	73.7	14.00	11.00	32.00	1.41	-2.66	-0.530	0.79
87	80.6	16.00	7.00	31.00	-16.84	0.12	-135.3	1.60
88	79.3	11.00	14.00	37.00	-9.67	-5.23	1.851	1.41
89	83.4	21.00	14.00	45.00	-24.20	4.23	-5.720	1.46
90	86.9	21.00	6.00	40.00	-2.03	4.10	-0.495	1.72
91	82.8	16.00	16.00	42.00	2.99	-6.64	-0.451	2.03
92	92.7	19.00	11.00	35.00	-14.09	6.86	-2.053	2.21
93	92.4	23.00	9.00	40.00	-3.07	0.16	-19.12	2.45
94	85.0	12.00	16.00	37.00	7.15	-2.61	-2.738	2.69
					-22.63	6.95	-3.255	0.93

SAM NO	H#	3H CPM	14C CPM	WIDE CPM	3H DPM	14C DFM	RATIO	PAGE: 130 of 15 LUMEX %
85	76.5	21.00	8.00	41.00				
95.8		11.00	16.00	35.00	-0.22	-3.99	0.055	0.66
97	91.2	19.00	10.00	38.00	-23.98	7.09	-3.384	1.05
98	79.1	23.00	8.00	40.00	-2.80	-1.20	2.338	1.19
99	78.3	13.00	14.00	38.00	4.58	-4.01	-1.143	0.80
100	76.7	14.00	12.00	32.00	-20.01	4.19	-4.779	0.75
101	80.4	18.00	9.00	38.00	-17.02	1.48	-11.48	1.70
102	77.7	16.00	14.00	39.00	-6.44	-2.58	2.496	1.38
103	79.1	24.00	10.00	46.00	-13.70	4.13	-3.314	0.76
104	81.9	17.00	11.00	38.00	5.68	-1.35	-4.223	0.91
105	85.0	18.00	11.00	37.00	-9.40	0.13	-73.30	1.51
106	77.7	17.00	5.00	31.00	-6.73	0.13	-51.62	1.69
107	76.3	26.00	12.00	49.00	-6.94	-7.93	0.875	1.69
108	79.3	13.00	8.00	32.00	8.27	1.28	6.452	1.64
109	84.6	19.00	12.00	35.00	-16.80	-3.84	4.376	1.41
110	82.9	25.00	7.00	46.00	-5.13	1.45	-3.525	1.52
111	82.1	22.00	5.00	34.00	10.31	-5.37	-1.920	0.84
112	83.9	17.00	16.00	43.00	4.65	-8.01	-0.580	1.87
113	76.1	15.00	11.00	41.00	-11.76	6.86	-1.715	1.37
114	78.1	20.00	8.00	40.00	-14.47	0.12	-116.6	0.95
115	74.3	15.00	9.00	34.00	-2.03	-3.96	0.513	1.02
116	80.2	14.00	7.00	30.00	-13.68	-2.56	5.345	1.69
117	76.7	22.00	6.00	42.00	-14.03	-5.19	2.702	2.25
118	79.7	22.00	10.00	44.00	2.97	-6.68	-0.445	2.38
119	77.6	11.00	5.00	26.00	1.52	-1.31	-1.160	1.39
120	75.9	20.00	4.00	30.00	-19.71	-7.83	2.518	1.06
78.7		13.00	14.00	31.00	-0.39	-9.32	0.042	1.11
76.2		17.00	14.00	42.00	-19.98	4.19	-4.767	1.75
123	79.6	27.00	8.00	43.00	-11.77	4.10	-2.867	1.50
124	77.8	8.00	12.00	30.00	13.28	-4.07	-3.260	0.80
125	77.4	14.00	3.00	24.00	-29.67	1.59	-18.67	1.84
126	77.6	22.00	5.00	30.00	-12.34	-10.56	1.169	1.22
127	80.4	18.00	9.00	41.00	3.67	-8.01	-0.458	2.35
128	76.7	21.00	15.00	48.00	-6.43	-2.58	2.492	1.16
129	79.3	11.00	11.00	34.00	-3.75	5.38	-0.697	1.05
130	78.4	16.00	14.00	37.00	-22.65	0.21	-107.1	1.26
131	77.0	21.00	10.00	40.00	-13.61	4.14	-3.288	1.67
132	77.9	22.00	12.00	46.00	-1.14	-1.31	0.873	0.57
133	77.9	22.00	9.00	37.00	0.14	1.36	0.103	1.07
134	77.0	16.00	11.00	34.00	1.68	-2.66	-0.631	1.15
135	77.3	23.00	10.00	41.00	-12.24	0.11	-107.8	1.00
136	77.4	23.00	9.00	40.00	3.16	-1.34	-2.358	1.48
137	81.4	19.00	15.00	41.00	3.69	-2.68	-1.377	0.94
138	83.2	20.00	6.00	32.00	-7.25	5.46	-1.330	0.89
139	94.9	14.00	9.00	29.00	-0.01	-6.63	0.001	2.05
140	94.1	18.00	12.00	35.00	-13.10	-2.44	5.377	4.64
141	91.1	16.00	10.00	35.00	-5.67	1.54	-3.684	4.64
142	99.1	16.00	11.00	36.00	-9.65	-1.14	8.436	5.12
143	78.4	17.00	15.00	46.00	-8.89	0.26	-34.65	3.06
144	83.8	14.00	11.00	36.00	-11.99	5.46	-2.196	2.03
145	87.7	29.00	5.00	36.00	-15.69	0.19	-81.94	1.32
83.3		26.00	12.00	44.00	21.58	-8.12	-2.658	2.12
81.3		17.00	7.00	34.00	-9.94	1.33	7.497	1.12
148	85.8	12.00	7.00	26.00	-7.40	-5.24	1.412	1.06
149	86.0	16.00	11.00	33.00	-17.72	-5.14	3.449	2.32
150	87.2	19.00	11.00	41.00	-10.99	0.17	-64.05	2.34
151	82.7	21.00	7.00	42.00	-4.12	0.13	-32.44	1.39
87.2		19.00	9.00	34.00	1.55	-5.30	-0.291	0.81
					-3.03	-2.56	1.183	2.88

SAM NO	H#	3H CPM	14C CPM	WIDE CPM	3H DPM	14C DPM	RATIO	PAGE: 140/15 LUMEX %
153	92.2	19.00	5.00	35.00				
	92.5	15.00	4.00	24.00	0.19	-7.94	-0.023	1.72
155	98.2	15.00	3.00	28.00	-8.36	-9.21	0.908	2.90
156	88.7	14.00	8.00	39.00	-6.77	-10.56	0.641	5.18
157	89.0	26.00	13.00	49.00	-13.43	-3.82	3.520	3.43
158	93.8	15.00	12.00	31.00	10.89	2.71	4.021	1.51
159	89.5	18.00	14.00	46.00	-12.65	1.59	-7.954	5.44
160	96.5	20.00	10.00	38.00	-7.60	4.20	-1.809	1.36
161	77.9	17.00	7.00	30.00	0.63	-1.19	-0.532	5.30
162	83.5	23.00	10.00	43.00	-7.94	-5.25	1.511	1.44
163	81.5	17.00	12.00	37.00	4.49	-1.31	-3.433	0.81
164	85.1	18.00	8.00	32.00	-9.99	1.47	-6.810	1.14
165	84.2	16.00	7.00	28.00	-5.09	-3.90	1.306	1.81
166	84.8	25.00	15.00	58.00	-9.12	-5.21	1.749	2.63
167	82.2	26.00	9.00	43.00	6.51	5.38	1.210	0.96
168	79.2	18.00	8.00	33.00	11.25	-2.71	-4.157	1.10
169	80.9	17.00	8.00	36.00	-6.11	-3.92	1.556	1.69
170	82.8	22.00	15.00	45.00	-7.98	-3.90	2.047	1.16
171	82.2	17.00	9.00	30.00	-0.49	5.42	-0.090	1.10
172	81.4	14.00	8.00	27.00	-8.30	-2.55	3.252	2.01
173	79.5	22.00	6.00	39.00	-14.40	-3.85	3.743	3.14
174	84.1	20.00	7.00	35.00	3.56	-6.67	-0.534	1.40
175	82.3	26.00	12.00	42.00	-0.36	-5.28	0.069	1.31
176	82.2	22.00	13.00	44.00	9.69	1.32	7.345	2.05
177	83.5	31.00	8.00	48.00	0.46	2.73	0.168	0.81
178	85.2	17.00	12.00	40.00	23.08	-4.13	-5.589	1.88
	80.3	14.00	11.00	33.00	-9.43	1.49	-6.319	0.27
	82.3	17.00	8.00	34.00	-16.11	0.17	-95.86	1.84
181	92.0	17.00	10.00	35.00	-7.76	-3.89	1.993	1.64
182	87.7	7.00	6.00	18.00	-7.23	-1.16	6.248	3.02
183	81.5	14.00	9.00	34.00	-28.13	-6.39	4.403	3.51
184	87.5	20.00	8.00	37.00	-14.92	-2.51	5.952	1.35
185	90.1	15.00	13.00	35.00	-0.20	-3.93	0.050	1.23
186	93.5	15.00	10.00	30.00	-13.74	2.91	-4.719	2.10
187	82.2	14.00	13.00	39.00	-11.57	-1.11	10.404	1.82
188	87.4	12.00	14.00	31.00	-16.93	2.86	-5.911	1.19
189	90.1	16.00	15.00	39.00	-21.34	4.29	-4.976	2.36
190	98.3	18.00	7.00	30.00	-12.57	5.59	-2.248	1.91
191	83.3	18.00	5.00	35.00	-1.96	-5.20	0.376	3.59
192	90.0	10.00	8.00	30.00	-3.83	-7.94	0.482	1.36
193	91.2	22.00	11.00	47.00	-22.31	-3.74	5.966	1.41
194	88.0	14.00	13.00	41.00	3.47	0.10	35.593	2.10
195	88.7	17.00	17.00	37.00	-16.26	2.91	-5.585	2.12
196	94.4	17.00	9.00	38.00	-11.61	8.25	-1.407	0.86
197	89.1	25.00	4.00	41.00	-6.22	-2.49	2.495	2.93
198	88.0	13.00	12.00	35.00	13.59	-9.40	-1.446	1.89
199	83.7	17.00	6.00	35.00	-17.95	1.58	-11.34	0.98
200	86.3	19.00	6.00	36.00	-6.47	-6.57	0.983	1.30
201	84.6	16.00	4.00	29.00	-1.58	-6.60	0.240	3.29
202	92.8	10.00	13.00	33.00	-7.46	-9.24	0.807	3.21
203	81.1	26.00	9.00	43.00	-24.84	3.02	-8.215	3.09
204	87.6	20.00	12.00	42.00	10.98	-2.71	-4.052	1.54
	94.5	28.00	7.00	52.00	-2.35	1.46	-1.611	1.27
206	84.1	16.00	13.00	37.00	20.43	-5.40	-3.784	0.97
207	87.1	20.00	9.00	38.00	-12.33	2.85	-4.331	1.49
208	83.7	17.00	10.00	40.00	-0.83	-2.58	0.320	1.80
209	88.4	19.00	6.00	33.00	-8.60	-1.20	7.144	2.00
210	84.9	20.00	8.00	35.00	-1.16	-6.60	0.176	2.02
					-0.72	-3.94	0.183	1.69

SAM NO	H#	3H CPM	14C CPM	WIDE CPM	3H DPM	14C DPM	RATIO	PAGE: LUMEX %
211	85.1	16.00	6.00	42.00				
212	83.9	17.00	6.00	31.00	-8.44	-6.55	1.288	1.15
213	83.7	19.00	3.00	28.00	-6.45	-6.57	0.980	1.86
214	85.6	22.00	8.00	41.00	-0.50	-10.64	0.047	3.29
215	82.9	18.00	13.00	39.00	3.84	-3.97	-0.969	0.84
216	80.9	16.00	16.00	38.00	-8.13	2.80	-2.901	1.13
217	87.2	19.00	9.00	40.00	-14.33	6.84	-2.094	1.63
218	85.6	21.00	11.00	36.00	-3.03	-2.56	1.181	2.47
219	84.8	21.00	9.00	44.00	0.02	0.08	0.203	2.04
220	97.4	18.00	7.00	34.00	0.93	-2.61	-0.357	1.61
221	106.1	24.00	12.00	48.00	-2.15	-5.21	0.413	1.28
222	99.3	22.00	13.00	47.00	11.58	1.50	7.707	2.69
223	97.0	13.00	13.00	35.00	4.26	2.85	1.494	2.91
224	104.8	14.00	6.00	34.00	-17.45	3.00	-5.808	4.84
225	94.4	18.00	9.00	37.00	-9.75	-6.46	1.508	2.95
226	98.9	16.00	7.00	33.00	-3.90	-2.51	1.553	1.92
227	93.9	13.00	9.00	25.00	-6.58	-5.16	1.275	2.44
228	86.3	15.00	13.00	35.00	-15.56	-2.42	6.420	4.06
229	84.5	19.00	7.00	34.00	-14.24	2.88	-4.942	2.43
230	90.3	16.00	10.00	33.00	-2.47	-5.26	0.470	2.19
231	87.1	19.00	11.00	34.00	-9.78	-1.15	8.517	1.78
232	94.0	12.00	9.00	36.00	-4.13	0.13	-32.69	1.23
233	84.8	20.00	6.00	34.00	-17.86	-2.40	7.427	2.63
234	85.3	16.00	14.00	42.00	0.31	-6.62	-0.047	1.01
235	83.6	20.00	7.00	37.00	-12.70	4.20	-3.023	1.03
236	81.6	15.00	12.00	34.00	-0.45	-5.28	0.085	0.78
237	83.4	15.00	12.00	36.00	-14.31	1.50	-9.530	1.51
238	85.7	21.00	12.00	42.00	-14.08	1.51	-9.299	1.37
239	82.0	14.00	6.00	31.00	-0.30	1.43	-0.212	1.44
240	97.3	18.00	17.00	39.00	-13.27	-6.53	2.032	3.15
241	86.0	17.00	12.00	38.00	-7.94	8.33	-0.953	1.83
242	89.6	18.00	9.00	29.00	-9.31	1.50	-6.214	1.80
					-2.62	-7.92	0.330	1.94

150415