

Radiological Survey Sheet

Job Location Pfizer, Inc. Groton, Ct. 06340 118^B pp. B 314 Page 1 19
 Survey Purpose EJ Radiologic Survey of Equipment LAB DECOM Date 12-19-12
 Performed by E GAILOR E Gailor
 (Print) (Sign)

Instrument (Model/S/N)	Packard Tri-Carb S/N 431521	Packard Tri-Carb S/N 431520	Ludlum 2241-2 163603	Wallac Model 1409 S/N 4061042
Det. (Model/SN)	Internal	Internal	Ludlum 43-68 PR 149613	Internal
Type Rad.	β	β	β	β
Cal. Due:	03/05/2013	03/05/2013	04/17/2013	09/15/2012
Check Instruments Used	✓		✓	

No.	Time	Locations	See attached LSC printout for Total Activity (cpm/100 cm ²)
1.	0645	BACKGROUND	
2.		door	
3.		FLOOR	
4.		UPPER WALL	
5.		LOWER "	
6.		UPPER "	
7.		LOWER "	
8.		SHELF	
9.		WALL UNDER SHELF	
10.		BENCH	
11.		TOP door	
12.		2ND "	
13.		3RD "	
14.		4TH "	
15.		TOP "	
16.		2ND "	
17.		3RD "	
18.	✓	TOP "	

Radiological Survey Continuation Sheet

Page 2 of 19

Date 12-19-12

No.	Time	Locations	See attached LSC printout for Total Activity (cpm/100 cm ²)
19	0645	2nd dwr	
20		3rd "	
21		Hood RIGHT side	
22		" " BACK	
23		" LEFT "	
24		" " side	
25		" RIGHT BOTTOM & CUP	
26		" LEFT "	
27		" RIGHT VENT	
28		" LEFT "	
29		" DASH	
30		" LIP	
31		" LEFT OUTSIDE	
32		" RIGHT "	
33		CAB DOORS	
34		INSIDE CAB,	
35		CAB door	
36		INSIDE CAB,	
37		UPPER WALL	
38		LOWER "	
39		UPPER "	
40		LOWER "	
41		TOP SHELF	
42		2nd "	
43		3rd "	
44		DESK & DWR	
45		SHELF	

Radiological Survey Continuation Sheet

Page 3 of 19

Date 12-17-12

No.	Time	Locations	See attached LSC printout for Total Activity (cpm/100 cm ²)
46	0645	TOP dWR	
47		2ND "	
48		3R "	
49		TOP 5421 F	
50		2ND "	
51		3RD "	
52		TOP "	
53		2ND "	
54		3RD "	
55		TOP dWR	
56		2ND "	
57		3RD "	
58		4TH "	
59		TOP "	
60		2ND "	
61		3RD "	
62		4TH "	
63		dWR	
64		TOP dWR	
65		2ND "	
66		3RD "	
67		4TH "	
68		TOP "	
69		2ND "	
70		3RD "	
71		4TH "	
72		BENCH & COP	

Radiological Survey Continuation Sheet

Page 4 of 19

Date 12-18-12

No.	Time	Locations	See attached LSC printout for Total Activity (cpm/100 cm ²)
73	0645	BENCH	
74	↑	"	q cup
75		"	
76		FLOOR	
77		"	
78		"	
79		"	
80		"	
81		"	
82		"	
83		UPPER WALL	
84		LOWER "	
85		CAD DOORS	
86		"	TOP SHELF
87		"	2ND "
88		"	3RD "
89		"	4TH "
90		"	doors
91		"	TOP SHELF
92		"	2ND "
93		"	3RD "
94		"	4TH "
95		SHELF	
96		PEG B ₂	
97		BENCH	
98		"	
99	↓	"	q cup

Radiological Survey Continuation Sheet

Page 5 of 19

Date 12-19-12

No.	Time	Locations	See attached LSC printout for Total Activity (cpm/100 cm ²)
100	0645	SINK AREA	
101		TOP dwr	
102		2ND "	
103		3RD "	
104		4TH "	
105		dwr	
106		TOP dwr	
107		2ND "	
108		3RD "	
109		4TH "	
110		CAB doors	
111		INSIDE CAB	
112		FLOOR	
113		FLOOR	
114		Side of CAB	
115		" " "	
116		FLOOR	
117		Beweg	
118		"	
119		"	
120		"	
121		TOP SHELF	
122		2ND "	
123		3RD "	
124		4TH "	
125		DESK	
126		SHELF	

Radiological Survey Continuation Sheet

Page 6 of 19

Date 12-19-12

No.	Time	Locations	See attached LSC printout for Total Activity (cpm/100 cm ²)
127	5645	TOP dwr	
128		2nd "	
129		3rd "	
130		WALL	
131		LEDGE	
132		BENCH	
133		BENCH	
134		TOP dwr	
135		2nd "	
136		2RD "	
137		TOP dwr	
138		2nd "	
139		3rd F	
140		TOP "	
141		2nd "	
142		3rd "	
143		4TH "	
144		CAB DOORS	
145		" TOP SHELF	
146		" 2nd "	
147		TOP dwr	
148		dwr	
149		TOP dwr	
150		2nd "	
151		3rd "	
152		4TH "	
153		dwr	

Radiological Survey Continuation Sheet

Page 7 of 19

Date 12-19-12

No.	Time	Locations	See attached LSC printout for Total Activity (cpm/100 cm ²)
154	0645	TOP dwr	
155		2ND "	
156		3R "	
157		4TH "	
158		CAB DOORS	
159		" TOP SHELF	
160		" 2ND "	
161		" 3RD "	
162		" 4TH "	
163		" DOORS	
164		" TOP SHELF	
165		" 2ND "	
166		" 3RD "	
167		Ledge & wall	
168		TOP SHELF	
169		2ND "	
170		3RD "	
171		DESK	
172		SHELF	
173		TOP dwr	
174		2ND "	
175		3RD "	
176		TOP dwr	
177		2ND "	
178		3RD "	
179		TOP "	
180		2ND "	

Radiological Survey Continuation Sheet

Page 8 of 19

Date 12-19-12

No.	Time	Locations	See attached LSC printout for Total Activity (cpm/100 cm ²)
181	0645	3rd dwr	
182	↑	TOP "	
183		2nd "	
184		3rd "	
185		4TH "	
186		TOP dwr	
187		2nd "	
188		3rd "	
189		4TH "	
190		dwr	
191		TOP dwr	
192		2nd "	
193		3rd "	
194		4TH "	
195		dwr	
196		TOP dwr	
197		2nd "	
198		3rd "	
199	4TH "		
200	SHELF		
201	TOP SHELF		
202	2nd "		
203	3rd "		
204	TOP "		
205	2nd "		
206	3rd "		
207	✓	BENCH	

Radiological Survey Continuation Sheet

Page 9 of 19

Date 12-19-12

No.	Time	Locations	See attached LSC printout for Total Activity (cpm/100 cm ²)
208	5645	BENCH	
209		BENCH of COP	
210		BENCH	
211		BENCH of COP	
212		"	
213		FLOOR	
214		"	
215		"	
216		LI	
217		V	
218			
219		"	
220			
221		UPPER WALL	
222		LOWER "	
223		UPPER "	
224		LOWER "	
225		UPPER WALL	
226		LOWER	
227		FLOOR	
228			
229			
230			
231		V	
232		Side OF CAM	
233		" " "	
234		FLOOR	

Radiological Survey Continuation Sheet

Page 10 of 19

Date 12-19-12

No.	Time	Locations	See attached LSC printout for Total Activity (cpm/100 cm ²)
235	0645	C. TOP dwp	
236		CAD DOORS	
237		INSIDE CAD	
238		dwp	
239		TOP dwp	
240		2ND "	
241		3RD "	
242		4TH "	
243		dwp	
244		TOP dwp	
245		2ND "	
246		3RD "	
247		4TH "	
248		TOP dwp	
249		2ND "	
250		3RD "	
251		4TH "	
252		TOP dwp	
253		2ND "	
254		3RD "	
255		TOP "	
256		2ND "	
257		3RD "	
258		TOP SHELF	
259		2ND "	
260		3RD "	
261		4TH "	

Radiological Survey Continuation Sheet

Page 11 of 19

Date 12-19-12

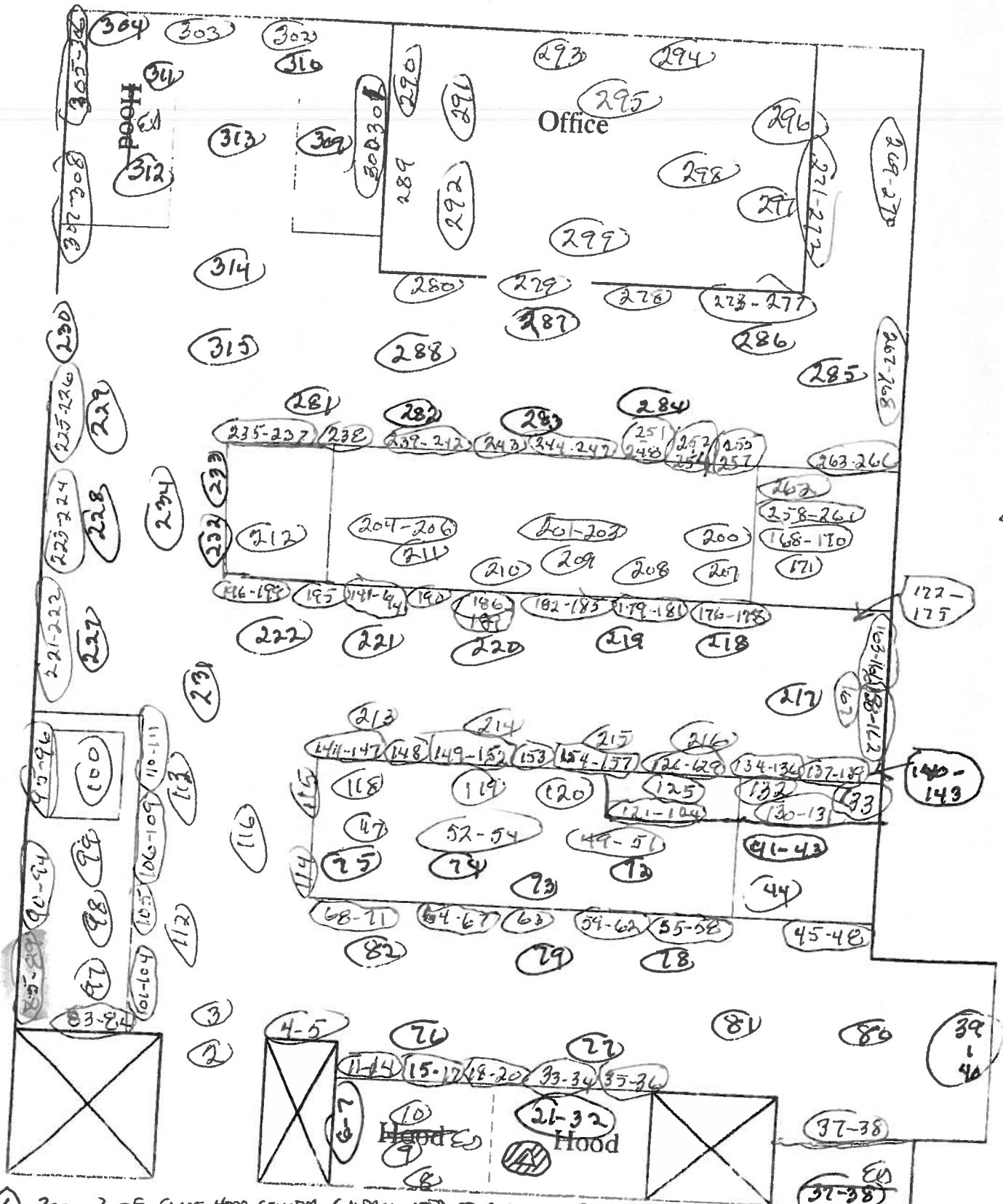
No.	Time	Locations	See attached LSC printout for Total Activity (cpm/100 cm ²)
262	0645	DESK	
263		SHelf	
264		TOP dWR	
265		2ND "	
266		3RD "	
267		UPPER WALL	
268		LOWER "	
269		UPPER "	
270		LOWER "	
271		UPPER "	
272		LOWER "	
273		TOP SHelf	
274		2ND "	
275		3RD "	
276		4TH "	
277		5TH "	
278		Window	
279		door	
280		Window	
281		Floor	
282		"	
283		"	
284		"	
285		"	
286		"	
287		"	
288		"	

Radiological Survey Continuation Sheet

Page 12 of 19

Date 12-19-12

No.	Time	Locations	See attached LSC printout for Total Activity (cpm/100 cm ²)
289	0645		
290		SHelves	
291		"	
292		CAB TOP & DWRS	
293		" " "	
294		LEDGE & WALL	
295		" " "	
296		DESK & DWRS	
297		SHelves	
298		"	
299		DESK & DWRS	
300		FLOOR	
301		UPPER WALL	
302		LOWER WALL	
303		LEDGE & LOWER WALL	
304		" " "	
305		LEDGE	
306		WINDOW & " "	
307		UPPER WALL	
308		LOWER "	
309		UPPER "	
310		LOWER "	
311		FLOOR	
312		"	
313		"	
314		"	
315		"	



1 300cm² of FINE HOOD CAPTURED TO A LEVEL OF 38000 dpm C-14. DECONTAMINATED TO NORMAL BACKGROUND LEVELS.
 Surveyed 100's of floor SURFACES using 43-48. NO READINGS IN EXCESS OF NORMAL BACKGROUND WERE REPORTED.

Assay Definition-

Assay Description:
Equipment Swipes

Assay Type: CPM
Report Name: Report1
Output Data Path: C:\Packard\Tricarb\Results\Ed Gailor\Eds Monthly Swipes
Raw Results Path: C:\Packard\Tricarb\Results\Ed Gailor\Eds Monthly Swipes\20121219_1608
\20121219_1608.results
RTF File Name: C:\Packard\Tricarb\Results\Ed Gailor\Eds Monthly Swipes\Ed's Monthly
Swipes.rtf
Assay File Name: C:\Packard\TriCarb\Assays\Eds Monthly Swipes.lsa

Count Conditions-

Nuclide: Triple
Quench Indicator: tSIE/AEC
External Std Terminator (sec): 5 sec
Pre-Count Delay (min): 0.00
Quench Set: n/a
Count Time (min): 1.00
Count Mode: Normal
Assay Count Cycles: 1 Repeat Sample Count: 1
#Vials/Sample: 1 Calculate % Reference: Off

Background Subtract: On - Manual
Low CPM Threshold: Off
2 Sigma % Terminator: Off

Regions	LL	UL	Bkg Subtract
A	0.0	18.6	0.00
B	18.6	156.0	0.00
C	0.0	2000.0	0.00

Count Corrections-

Static Controller: On Luminescence Correction: On
Colored Samples: n/a Heterogeneity Monitor: n/a
Coincidence Time (nsec): 18 Delay Before Burst (nsec): 75

Half Life-

Half Life Correction: Off

Regions	Half Life	Units	Reference Date	Reference Time
A				
B				
C				

Cycle 1 Results

S#	CPMA	CPMB	CPMC	MESSAGES
1	15	13	33	
2	12	5	20	
3	20	5	32	
4	7	7	21	
5	12	8	23	
6	6	6	18	
7	12	4	27	
8	11	7	21	
9	9	3	18	
10	9	7	24	

11	8	7	19
12	7	6	20
13	13	6	23
14	8	6	18
15	15	10	30
16	0	3	3
17	11	6	20
18	12	10	24
19	16	11	30
20	13	3	25
21	12	12	34
22	14	5	23
23	10	6	20
24	9	4	22
25	5	7	15
26	12	5	21
27	8	5	16
28	9	5	17
29	13	5	23
30	11	5	22
31	16	10	29
32	10	2	14
33	12	12	30
34	5	10	22
35	14	6	25
36	11	8	28
37	10	6	17
38	12	6	22
39	13	5	21
40	5	4	14
41	4	9	21
42	4	4	14
43	5	6	12
44	19	2	23
45	13	5	24
46	15	7	28
47	15	7	29
48	10	3	16
49	7	4	12
50	7	11	28
51	3	6	12
52	11	7	19
53	7	8	23
54	18	12	34
55	12	6	23
56	6	9	18
57	12	17	36
58	9	7	20
59	19	7	32
60	5	6	18
61	7	3	14
62	9	4	13
63	13	7	23
64	4	8	19
65	16	6	24
66	17	7	29
67	9	6	19
68	13	5	22
69	13	5	22
70	14	7	25
71	6	7	17
72	17	5	25
73	6	11	21

Protocol# 3 - Eds Monthly Swipes.lsa

User: Ed Galtor

74	16	11	35
75	5	8	16
76	11	9	24
77	11	8	26
78	14	8	25
79	6	8	18
80	3	4	10
81	8	5	22
82	14	2	17
83	11	5	19
84	8	8	20
85	21	7	32
86	13	6	28
87	18	8	28
88	11	11	25
89	10	9	24
90	12	7	21
91	12	7	23
92	5	11	19
93	13	4	21
94	8	4	15
95	13	9	27
96	16	5	27
97	9	3	15
98	6	8	20
99	11	10	26
100	16	3	25
101	7	5	17
102	7	10	23
103	3	7	16
104	13	8	27
105	9	5	19
106	11	7	22
107	9	8	22
108	7	8	18
109	9	5	19
110	13	5	25
111	17	4	25
112	13	10	30
113	12	9	27
114	10	8	27
115	11	4	16
116	15	7	31
117	5	6	17
118	6	4	14
119	7	5	13
120	8	9	22
121	9	4	19
122	12	5	25
123	14	3	21
124	16	6	25
125	10	15	30
126	8	7	15
127	20	4	32
128	1	6	13
129	12	3	16
130	6	5	13
131	12	8	26
132	3	6	12
133	13	8	24
134	14	9	26
135	15	10	33
136	6	7	21

137	7	4	14
138	7	8	20
139	20	6	31
140	8	6	16
141	12	1	21
142	11	9	23
143	10	10	22
144	13	5	22
145	10	7	19
146	17	8	32
147	11	7	21
148	6	7	20
149	13	9	26
150	11	7	24
151	9	12	26
152	8	5	16
153	10	5	20
154	13	7	24
155	8	3	15
156	12	9	26
157	2	9	14
158	9	6	20
159	8	4	20
160	2	3	7
161	17	6	27
162	6	8	16
163	13	4	21
164	6	9	22
165	12	8	21
166	10	6	19
167	16	9	29
168	11	9	24
169	8	6	19
170	14	9	30
171	9	7	20
172	9	5	17
173	9	1	14
174	12	6	22
175	8	7	16
176	6	10	18
177	9	7	18
178	12	8	22
179	15	5	29
180	8	7	22
181	10	5	16
182	14	6	23
183	8	5	18
184	13	6	22
185	5	11	19
186	16	10	32
187	4	12	20
188	3	4	8
189	10	9	23
190	10	11	24
191	14	5	22
192	6	5	16
193	14	7	25
194	7	5	17
195	12	6	21
196	14	5	29
197	15	8	27
198	12	9	23
199	12	6	24

200	18	7	27
201	10	8	23
202	6	6	19
203	9	4	15
204	15	8	26
205	11	4	19
206	2	6	14
207	12	8	22
208	13	4	20
209	9	6	20
210	5	6	15
211	4	6	13
212	10	6	18
213	16	6	26
214	14	6	25
215	3	6	11
216	3	5	12
217	10	11	22
218	12	5	19
219	12	12	30
220	11	2	17
221	11	8	25
222	11	8	23
223	12	5	25
224	14	9	26
225	7	3	16
226	7	5	16
227	14	7	24
228	13	8	25
229	6	6	14
230	11	5	22
231	6	6	18
232	13	13	31
233	14	4	23
234	10	9	22
235	10	10	24
236	3	6	11
237	14	9	28
238	10	11	28
239	7	3	17
240	11	5	18
241	4	6	11
242	3	6	14
243	3	6	15
244	6	8	22
245	2	6	14
246	6	8	21
247	14	7	24
248	9	8	23
249	9	6	19
250	8	4	18
251	10	8	24
252	14	3	23
253	10	7	23
254	11	3	18
255	10	14	27
256	10	4	17
257	9	0	13
258	9	5	19
259	8	4	13
260	10	3	19
261	11	6	22
262	10	6	19

263	9	12	24
264	9	5	18
265	10	9	23
266	19	4	31
267	14	5	25
268	14	6	24
269	12	7	26
270	18	8	29
271	13	11	29
272	10	3	17
273	11	14	27
274	4	7	13
275	8	7	18
276	13	2	16
277	11	6	23
278	17	9	27
279	8	6	21
280	12	8	24
281	9	12	27
282	8	5	18
283	11	9	26
284	13	3	23
285	17	11	34
286	13	10	29
287	16	9	31
288	11	14	28
289	11	8	26
290	6	13	25
291	9	3	20
292	13	13	30
293	12	8	20
294	15	7	28
295	12	11	25
296	5	10	22
297	8	7	21
298	13	2	19
299	7	6	17
300	14	5	25
301	8	3	14
302	8	9	22
303	12	4	20
304	14	7	29
305	6	6	16
306	5	9	17
307	12	6	26
308	5	6	16
309	5	4	14
310	9	11	24
311	3	5	12
312	19	6	29
313	19	6	27
314	9	6	18
315	10	7	23