

# Radiological Survey Sheet

Job Location Pfizer, Inc. Groton, Ct. 06340 118B/B204 B, B204C Page 1 of 8

Survey Purpose <sup>EA</sup> Radiologic Survey of Equipment LAB DE comm B204 D Date 1-11-13

Performed by E. GAILOR (Print) E. Gailor (Sign)

Instrument (Model/S/N)	Packard Tri-Carb S/N 431521	Packard Tri-Carb S/N 431520	Ludlum 2241-2 163603	Wallac Model 1409 S/N 4061042
Det. (Model/SN)	Internal	Internal	Ludlum 43-68 PR 149613	Internal
Type Rad.	β	β	β	β
Cal. Due:	03/05/2013	03/05/2013	04/17/2013	09/15/2012
Check Instruments Used	✓		✓	

No.	Time	Locations	See attached LSC printout for Total Activity (cpm/100 cm <sup>2</sup> )
1.	0830	BACKGROUND	
2.		door	
3.		FLOOR	
4.		UPPER WALL	
5.		LOWER "	
6.		UPPER "	
7.		LOWER "	
8.		TOP INST.	
9.		BOTTOM INST.	
10.		door	
11.		FLOOR	
12.		UPPER WALL	
13.		LOWER "	
14.		UPPER "	
15.		LOWER "	
16.		UPPER "	
17.		LOWER "	
18.		UPPER "	

# Radiological Survey Continuation Sheet

Page 2 of 8

Date 1-11-10

No.	Time	Locations	See attached LSC printout for Total Activity (cpm/100 cm <sup>2</sup> )
19	0830	LOWER WALL	
20		UPPER "	
21		LOWER "	
22		UPPER "	
23		LOWER "	
24		UPPER "	
25		LOWER "	
26		UPPER "	
27		LOWER "	
28		UPPER "	
29		LOWER "	
30		FLOOR	
31		"	
32		"	
33		"	
34		"	
35		"	
36		UPPER WALL	
37		LOWER "	
38		<del>ED DOOR</del> UPPER WALL	
39		<del>ED FLOOR</del> LOWER WALL	
40		<del>ED UPPER WALL</del> DOOR	
41		<del>ED LOWER "</del> FLOOR	
42		UPPER WALL	
43		LOWER "	
44		DOOR 5	
45	✓	FLOOR	

# Radiological Survey Continuation Sheet

Page 3 of 8

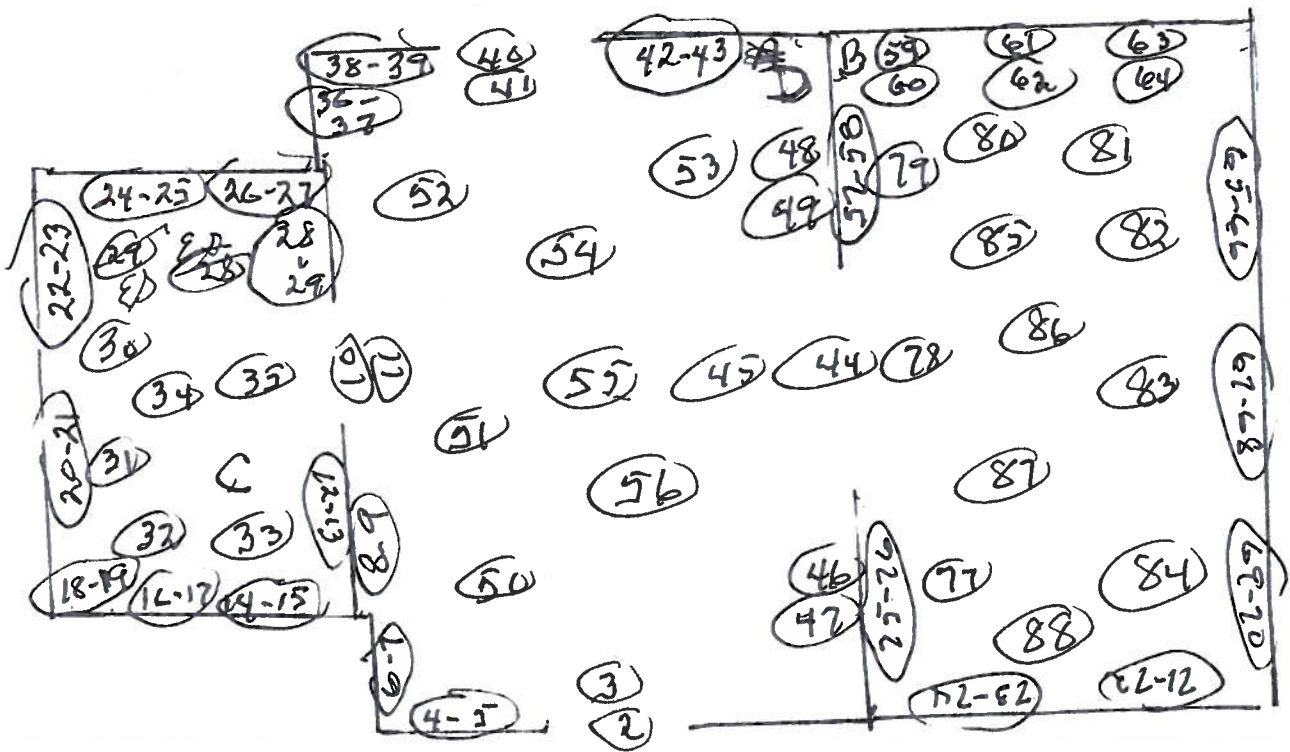
Date 1-11-10

No.	Time	Locations	See attached LSC printout for Total Activity (cpm/100 cm <sup>2</sup> )
46	0830	UPPER WALL	
47		LOWER	11
48		UPPER	11
49		LOWER	11
50		FLOOR	
51		11	
52		11	
53		11	
54		11	
55		11	
56		11	
57		UPPER WALL	
58		LOWER	11
59		UPPER	11
60		LOWER	11
61		UPPER	11
62		LOWER	11
63		UPPER	11
64		LOWER	11
65		UPPER	11
66		LOWER	11
67		UPPER	11
68		LOWER	11
69		UPPER	11
70		LOWER	11
71		UPPER	11
72	✓	LOWER	11



118 B 204 <sup>D</sup>A, 204 B, 204 C

pg 5 of 8  
1-11-13



Sampled 100% of lower surfaces using 43-68. NO REMAINS IN EXCESS OF  
NORMAL BACKGROUND VALUES WERE NOTED.

○ = WPT LOCATION

Assay Definition-

Assay Description:  
Equipment Swipes

Assay Type: CPM  
Report Name: Report1  
Output Data Path: C:\Packard\Tricarb\Results\Ed Gailor\Eds Monthly Swipes  
Raw Results Path: C:\Packard\Tricarb\Results\Ed Gailor\Eds Monthly Swipes\20130111\_1203  
\20130111\_1203.results  
RTF File Name: C:\Packard\Tricarb\Results\Ed Gailor\Eds Monthly Swipes\Ed's Monthly  
Swipes.rtf  
Assay File Name: C:\Packard\TriCarb\Assays\Eds Monthly Swipes.lsa

Count Conditions-

Nuclide: Triple  
Quench Indicator: tSIE/AEC  
External Std Terminator (sec): 5 sec  
Pre-Count Delay (min): 0.00  
Quench Set: n/a  
Count Time (min): 1.00  
Count Mode: Normal  
Assay Count Cycles: 1 Repeat Sample Count: 1  
#Vials/Sample: 1 Calculate % Reference: Off

Background Subtract: On - Manual  
Low CPM Threshold: Off  
2 Sigma % Terminator: Off

Regions	LL	UL	Bkg Subtract
A	0.0	18.6	0.00
B	18.6	156.0	0.00
C	0.0	2000.0	0.00

Count Corrections-

Static Controller: On Luminescence Correction: On  
Colored Samples: n/a Heterogeneity Monitor: n/a  
Coincidence Time (nsec): 18 Delay Before Burst (nsec): 75

Half Life-

Half Life Correction: Off

Regions	Half Life	Units	Reference Date	Reference Time
A				
B				
C				

Cycle 1 Results

S#	CPMA	CPMB	CPMC	MESSAGES
1	11	2	17	
2	13	7	22	
3	4	12	19	
4	13	6	26	
5	9	7	20	
6	12	7	25	
7	9	8	19	
8	10	3	18	
9	9	5	16	
10	17	8	29	

11	10	6	21
12	4	3	10
13	7	4	14
14	15	4	21
15	18	5	30
16	12	7	24
17	5	4	17
18	8	8	17
19	6	4	17
20	11	4	17
21	7	7	18
22	12	9	27
23	12	7	23
24	17	8	29
25	20	24	49
26	9	2	13
27	11	10	23
28	8	7	19
29	9	4	18
30	7	11	22
31	9	10	27
32	11	2	18
33	10	6	18
34	17	6	27
35	12	6	21
36	9	3	15
37	16	6	26
38	5	2	13
39	14	6	25
40	8	6	23
41	6	3	13
42	18	6	27
43	9	9	28
44	10	8	21
45	8	6	16
46	5	11	21
47	9	10	19
48	13	6	24
49	11	4	18
50	7	8	20
51	21	13	39
52	11	6	22
53	5	3	11
54	4	2	8
55	10	8	21
56	6	3	11
57	11	7	23
58	14	6	26
59	9	7	18
60	5	8	17
61	9	6	18
62	3	3	8
63	6	7	20
64	16	12	35
65	12	4	20
66	16	7	26
67	9	6	17
68	6	9	19
69	10	8	22
70	6	6	19
71	9	11	24
72	1	6	12
73	9	5	19

74	12	7	23
75	7	7	18
76	12	7	23
77	17	3	24
78	6	4	12
79	10	5	21
80	14	11	32
81	10	6	20
82	9	9	21
83	11	6	17
84	8	4	17
85	5	4	13
86	9	7	19
87	7	4	15
88	17	9	35