

Radiological Survey Sheet

Job Location Pfizer Central Research Gorton 118/373 Page 1 of 16
 Survey Purpose Radiological Assessment Date 9/14/01
 Performed By Pam Jones (Print) Pam Jones (Sign)

Inst.(1) (Model/SN) Beckman LS 6500 #7060743	Inst.(2) Ludlum 2241-2 (Model/SN) #163603	Inst.(3) (Model/SN)
Det. Internal (Model/SN)	Det. Ludlum 43-68 (Model/SN) #PR149613	Det. (Model/SN)
Eff. See LSC Printout	Eff. \approx 8% C14	Eff.
Type rad. β	Type rad. β	Type rad.
Bkgd. See LSC Printout	Bkgd. 300 cpm	Bkgd.
Cal. Due: 5/1/02	Cal. Due 1/20/02	Cal. due

No.	Time	Location	Inst. Used	Total Activity (dpm/100 cm ²)
1.	0900	door	1	See attached LSC Printout
2.		↓	1	
3.		Floor	1	
4.		↓	1	
5.		↓	1	
6.		↓	1	
7.		wall	1	
8.		↓	1	
9.		↓	1	
10.		↓	1	
11.		↓	1	
12.		Cabinet	1	
13.		Floor	1	
14.		↓	1	
15.		↓	1	
16.		↓	1	
17.		↓	1	
18.	↓	↓	1	↓

Radiological Survey Continuation Sheet

Date

No.	Time	Location	Inst. Used	
19		Floor		
20		top outside hood	1	See attached LSC Printout
21		↓	1	
22		hood window	1	
23		↓	1	
24		↓	1	
25		↓	1	
26		ledge	1	
27		↓	1	
28		left inside hood	1	
29		shelf	1	
30		↓	1	
31		↓	1	
32		top back	1	
33		bottom back	1	
34		counter	1	
35		sink	1	
36		cup sink	1	
37		top back	1	
38		bottom back	1	
39		right side	1	
40		counter	1	
41		cup sink	1	
42		out. cabinet	1	
43		top shelf	1	
44		bottom shelf	1	
45		out. cabinet	1	
46	↓	left	1	↓

Radiological Survey Continuation Sheet

Page 3 of 16
 Date 9/14/01

No.	Time	Location	Inst. Used	Total Activity (dpm/100 cm ²)
47		bottom		
48		right	1	See attached LSC Printout
49		out. shelves	1	
50		top shelf	1	
51		shelf	1	
52		bottom shelf	1	
53		top shelf	1	
54		shelf	1	
55		bot. shelf	1	
56		top shelf	1	
57		bot. shelf	1	
58		wall	1	
59		black stand	1	
60		shelf under stand	1	
61		desk top	1	
62		mit. drawers	1	
63		top drawer	1	
64		drawer	1	
65		bot. drawer	1	
66		drawer	1	
67		door	1	
68		wall	1	
69		↓	1	
70		↓	1	
71		door	1	
72		wall	1	
73		shelves	1	
74		↓ radiator ledge	1	

Radiological Survey Continuation Sheet

Page 4 of

Date 9/ 1

No.	Time	Location	Inst. Used	Total Activity (dpm/100)
75		Shelves		
76		Wall	1	See attached LSC
77		Floor	1	
78		top shelf	1	
79		bottom shelf	1	
80		pipe drier	1	
81		sink top	1	
82		sides of sink	1	
83		bottom	1	
84		drain	1	
85		out. shelves	1	
86		top shelf	1	
87		shelf	1	
88		bottom shelf	1	
89		out. shelves	1	
90		top shelf	1	
91		shelf	1	
92		bot. shelf	1	
93		mat shelves	1	
94		top shelf	1	
95		shelf	1	
96		bot. shelf	1	
97		shelf	1	
98		↓	1	
99		↓	1	
100		counter	1	
101		↓	1	
102	↓	↓	1	

Radiological Survey Continuation Sheet

Page 5 of 16
 Date 9/1

No.	Time	Location	Inst. Used	Total Acti (dpm/100)
103		Cup sink		
104		↓	1	See attached LSC Printout
105		↓	1	
106		out. drawers	1	
107		left	1	
108		bottom	1	
109		right		
110		out. drawers	1	
111		top drawer	1	
112		drawer	1	
113		" "	1	
114		bot. drawer	1	
115		out. drawers	1	
116		top drawer	1	
117		drawer	1	
118		" "	1	
119		bot. drawer	1	
120		out. drawers	1	
121		left drawer	1	
122		right drawer	1	
123		left	1	
124		bottom	1	
125		right	1	
126		floor	1	
127		↓	1	
128		↓	1	
129		door	1	
130		wall	1	

Radiological Survey Continuation Sheet

Page 6 of 10

Date 9/14/01

No.	Time	Location	Inst. Used	Total Activity (dpm/100 cm ²)
131		cabinet		
132		ledge	1	See attached LSC Printout
133		shelves	1	
134		desktop	1	
135		door	1	
136		floor	1	
137		wall	1	
138		top shelf	1	
139		shelf	1	
140		bottom shelf	1	
141		top shelf	1	
142		bottom shelf	1	
143		top shelf	1	
144		bottom shelf	1	
145		desktop	1	
146		out. drawers	1	
147		top drawer	1	
148		drawer	1	
149		bot. drawer	1	
150		drawer	1	
151		out. drawers	1	
152		top drawer	1	
153		bot. drawer	1	
154		counter top	1	
155		out. drawers	1	
156		top drawer	1	
157		drawer	1	
158	↓	" "	1	↓

Radiological Survey Continuation Sheet

7 of 16

Da

1

No.	Time	Location	Inst. Used	
159		bottom drawer		
160		top out. hood	1	See attached LSC Printout
161		↓	1	
162		window sink	1	
163		↓	1	
164		↓	1	
165		↓	1	
166		ledge	1	
167		ledge	1	
168		left side inside hood	1	
169		top back	1	
170		bottom back	1	
171		counter	1	
172		old sink	1	
173		top back	1	
174		bottom back	1	
175		right side	1	
176		shelf	1	
177			1	
178		↓	1	
179		counter	1	
180		old sink	1	
181		out. cabinet	1	
182		left	1	
183		bottom	1	
184		right	1	
185		outside cabinet	1	
186	↓	top shelf	1	↓

No.	Time	Location		dpm/ 00
187		bottom shelf		
188		Floor	1	See attached LSC Printout
189			1	
190			1	
191			1	
192			1	
193			1	
194		↓	1	
195		wall	1	
196		shelf	1	
197		Window	1	
198		wall	1	
199		counter	1	
200		out. shelves	1	
201		top shelf	1	
202		shelf	1	
203		bot. shelf	1	
204		out. shelves	1	
205		top shelf	1	
206		shelf	1	
207		bot. shelf	1	
208		out. shelves	1	
209		top shelf	1	
210		shelf	1	
211		bot. shelf	1	
212		top shelf	1	
213		bot. shelf	1	
214	↓	counter	1	↓

Radiological Survey Continuation Sheet

Page

16

9/14/01

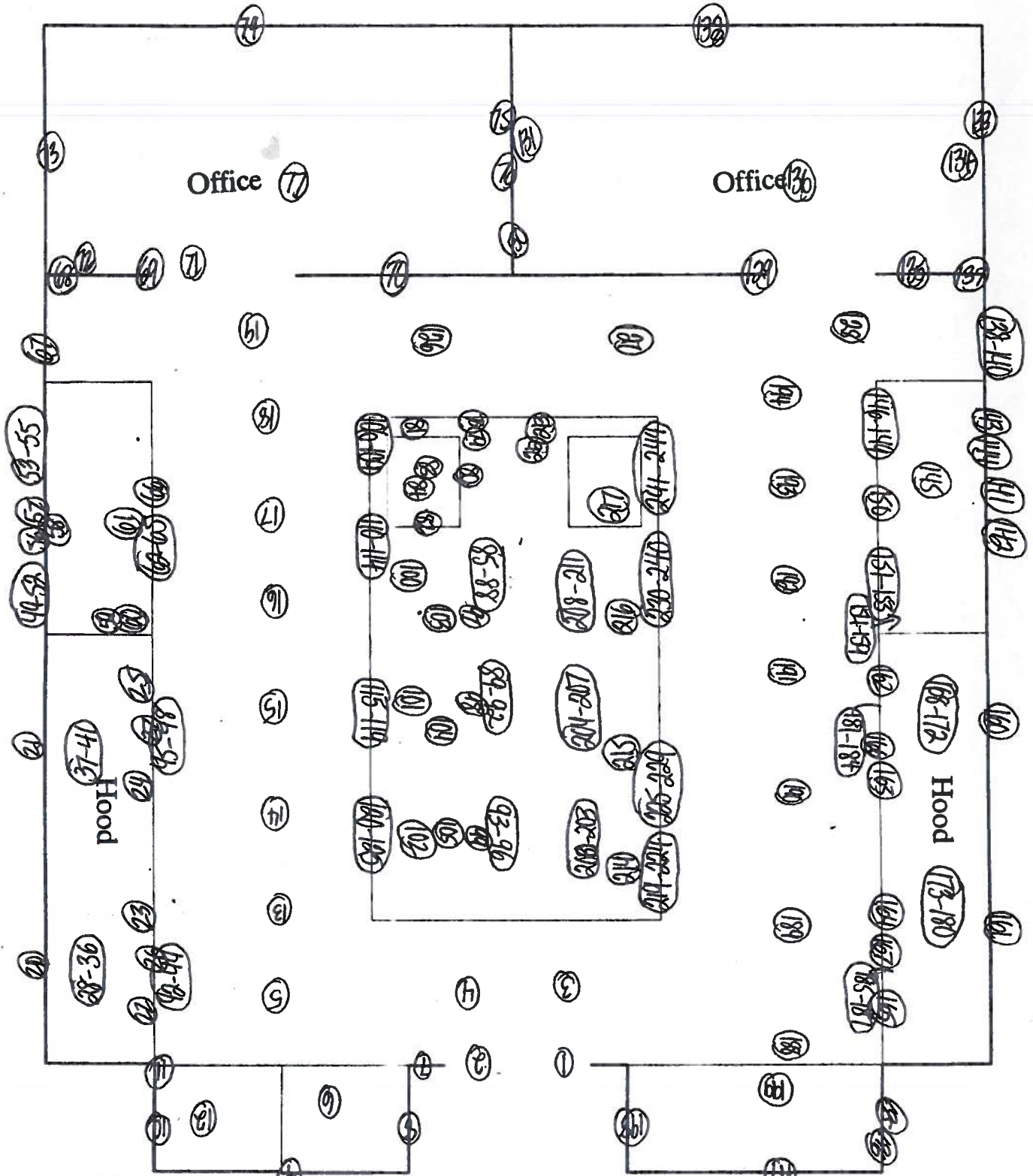
No.	Time	Location	Inst. Used	
215		counter		
216		↓	1	See attached LSC Printout
217		↓	1	
218		pipe drawer	1	
219		out. drawer	1	
220		left drawer	1	
221		right drawer	1	
222		left	1	
223		bottom	1	
224		right	1	
225		out drawers	1	
226		top drawer	1	
227		drawer	1	
228		" "	1	
229		bot. drawer	1	
230		out. drawers	1	
231		left drawer	1	
232		top drawer	1	
233		bot. drawer	1	
234		right drawer	1	
235		top drawer	1	
236		bottom drawer	1	
237		left drawer	1	
238		right drawer	1	
239		drawer	1	
240		bottom drawer	1	
241		out. cabinet	1	
242	↓	left	1	↓

Bld. 118 Room 373

Page 11 of 16

Date: 9/14/01

⊙ = wipe location



Surveyed 100% of all lower surfaces using instrument #2.
All areas were found to be at normal background levels.

ID: EQUIPMENT SURVY

14 SEP 2001 18:24

USER: 2 COMMENT: EQUIPMENT SURVEY

PULSE TIME : 1.00
 DATA CALC : DL DPM H# : YES SAMPLE REPEATS: 1 PRINTER : #EDIT
 COUNT BLANK : YES IC# : NO REPLICATES : 1 RS232 : #STD
 TWO PHASE : NO AQC : YES CYCLE REPEATS : 1
 SCINTILLATOR: LIQUID LUMEX: YES LOW SAMPLE REJ: 0
 LOW LEVEL : NO HALF LIFE CORRECTION DATE: none

ISOTOPE 1: 3H %ERROR: 2.00 FACTOR: 1.0000 BKG. SUB: 0
 ISOTOPE 2: 14C %ERROR: 2.00 FACTOR: 1.0000 BKG. SUB: 0
 WIDE OPEN WINDOW %ERROR: 0.00 FACTOR: 1.0000 BKG. SUB: 0

BACKGROUND QUENCH CURVE: Off COLOR QUENCH CORRECTION: Off

Quench Limits Low: 13.688 High: 306.34

SAM NO	H#	3H CPM	14C CPM	WIDE CPM	3H DPM	14C DPM	LUMEX %
B1	79.4	13.00	8.00	30.00	23.72	10.50	1.19
		Blank Average	DPM	for 3H :	23.72	COEF. OF VAR:	0.000
		Blank Average	DPM	for 14C :	10.50	COEF. OF VAR:	0.000

1	71.2	19.00	5.00	29.00	12.97	-4.14	0.93
2	74.5	8.00	5.00	21.00	-9.49	-3.95	1.58
3	78.3	16.00	4.00	27.00	8.33	-5.41	1.04
4	82.7	18.00	12.00	39.00	9.17	5.30	1.71
5	75.1	18.00	4.00	33.00	12.05	-5.45	0.78
6	76.3	14.00	9.00	32.00	1.25	1.31	1.32
7	76.7	17.00	10.00	41.00	7.14	2.60	0.66
8	82.6	27.00	20.00	58.00	24.54	15.88	1.19
9	81.8	24.00	11.00	42.00	22.56	3.85	3.22
10	75.7	14.00	9.00	32.00	1.19	1.30	1.48
11	77.6	16.00	13.00	39.00	3.61	6.63	0.63
12	74.5	13.00	12.00	31.00	-2.56	5.32	1.16
13	77.8	18.00	8.00	35.00	10.46	-0.09	0.53
14	79.4	8.00	20.00	34.00	-16.94	16.16	1.03
15	76.6	14.00	15.00	44.00	-1.77	9.34	0.58
16	74.2	20.00	14.00	45.00	11.04	7.88	0.63
17	78.0	10.00	6.00	23.00	-5.52	-2.63	1.22
18	74.2	14.00	9.00	28.00	1.02	1.30	1.47
19	82.3	16.00	6.00	34.00	7.91	-2.72	1.13
20	76.3	15.00	7.00	33.00	4.38	-1.38	0.87
21	74.7	23.00	12.00	45.00	18.42	5.16	1.07
22	75.6	9.00	9.00	31.00	-9.35	1.39	1.02
23	75.0	18.00	12.00	34.00	7.99	5.24	1.27
24	78.3	20.00	16.00	42.00	10.68	10.59	0.71
25	77.7	22.00	7.00	46.00	19.45	-1.50	0.88
26	79.5	22.00	12.00	40.00	17.25	5.21	0.83
27	77.8	13.00	11.00	36.00	-1.72	4.01	0.85
28	77.6	18.00	3.00	30.00	12.99	-6.78	1.40
29	77.7	15.00	8.00	28.00	4.06	-0.04	0.92
30	78.0	16.00	6.00	30.00	7.26	-2.73	1.03
31	83.6	15.00	11.00	33.00	3.27	4.01	1.01
32	79.2	13.00	6.00	31.00	1.02	-2.68	2.11
33	80.2	20.00	9.00	38.00	14.63	1.23	2.00
34	91.9	15.00	11.00	37.00	4.43	4.07	2.98
35	105.4	13.00	9.00	27.00	2.87	1.48	1.33
36	95.7	11.00	13.00	33.00	-5.48	6.87	4.98

SAM NO	H#	3H CPM	14C CPM	WIDE CPM	3H DPM	14C DPM	LUMEX %
37	79.7	6.00	12.00	25.00	-17.07	5.48	1.26
38	83.4	8.00	10.00	26.00	-11.53	2.79	1.94
39	80.6	12.00	5.00	26.00	-0.45	-4.00	1.31
40	84.9	10.00	9.00	28.00	-6.50	1.42	2.31
41	90.8	15.00	15.00	44.00	2.05	9.45	1.20
42	75.6	19.00	11.00	35.00	10.68	3.90	1.03
43	89.3	19.00	7.00	29.00	15.26	-1.41	1.79
44	82.0	10.00	12.00	29.00	-8.32	5.43	4.88
45	82.3	25.00	8.00	41.00	26.44	-0.19	2.17
46	80.6	20.00	7.00	35.00	15.75	-1.45	1.08
47	87.0	15.00	16.00	37.00	1.03	10.76	0.95
48	80.0	17.00	3.00	29.00	11.27	-6.77	0.94
49	72.5	19.00	10.00	42.00	10.69	2.54	0.51
50	79.1	22.00	15.00	45.00	15.61	9.23	0.91
51	75.2	16.00	8.00	33.00	5.84	-0.07	1.31
52	79.7	16.00	8.00	32.00	6.47	-0.05	0.82
53	74.1	19.00	5.00	29.00	13.46	-4.13	1.48
54	77.4	15.00	4.00	29.00	6.07	-5.40	0.77
55	77.8	20.00	7.00	34.00	15.23	-1.46	0.98
56	75.4	24.00	11.00	45.00	21.16	3.81	0.60
57	77.8	9.00	11.00	28.00	-10.23	4.07	1.08
58	77.1	22.00	11.00	42.00	17.29	3.86	0.86
59	77.8	17.00	6.00	36.00	9.35	-2.75	1.09
60	75.5	11.00	11.00	35.00	-6.16	4.03	9.56
61	77.7	16.00	5.00	30.00	7.73	-4.07	2.48
62	76.3	22.00	8.00	37.00	18.67	-0.16	0.53
63	76.5	10.00	10.00	31.00	-7.69	2.71	0.92
64	78.3	13.00	10.00	34.00	-1.15	2.67	0.83
65	78.7	19.00	11.00	36.00	11.19	3.91	0.79
66	78.4	14.00	6.00	27.00	3.05	-2.70	1.47
67	79.6	11.00	7.00	31.00	-3.75	-1.31	0.93
68	89.3	24.00	6.00	36.00	27.09	-2.84	1.63
69	75.1	17.00	9.00	34.00	7.41	1.25	0.65
70	80.7	17.00	7.00	30.00	9.30	-1.40	1.39
71	75.5	15.00	5.00	26.00	5.30	-4.06	1.01
72	77.2	8.00	14.00	34.00	-13.92	8.10	1.26
73	77.8	16.00	14.00	36.00	3.12	7.97	0.87
74	79.6	13.00	10.00	27.00	-1.01	2.68	1.44
75	76.8	21.00	13.00	40.00	14.09	6.55	0.67
76	78.2	15.00	11.00	38.00	2.58	3.98	0.77
77	78.1	11.00	11.00	33.00	-5.95	4.04	0.89
78	79.3	18.00	10.00	34.00	9.67	2.60	1.04
79	78.8	12.00	3.00	19.00	0.37	-6.68	1.99
80	77.2	18.00	11.00	41.00	8.83	3.92	3.77
81	79.1	15.00	10.00	37.00	3.22	2.64	1.98
82	75.6	13.00	9.00	27.00	-0.92	1.32	1.19
83	77.3	17.00	5.00	29.00	9.80	-4.09	0.91
84	79.3	14.00	9.00	36.00	1.62	1.32	0.65
85	84.6	27.00	10.00	44.00	30.34	2.47	0.73
86	80.9	15.00	8.00	31.00	4.49	-0.03	0.99
87	80.1	16.00	10.00	37.00	5.49	2.63	0.84
88	79.1	10.00	7.00	22.00	-5.94	-1.29	1.11
89	81.5	18.00	10.00	35.00	10.02	2.61	1.03
90	83.9	10.00	11.00	34.00	-7.65	4.10	1.58
91	79.0	13.00	9.00	30.00	-0.57	1.34	0.83
92	82.6	24.00	7.00	42.00	24.87	-1.51	0.83
93	77.7	14.00	11.00	36.00	0.40	3.99	0.79
94	76.7	18.00	12.00	39.00	8.24	5.26	0.95

SAM NO	H#	3H CPM	14C CPM	WIDE CPM	3H DPM	14C DPM	LUMEX %
80.8		14.00	15.00	39.00	-1.34	9.37	0.64
80.9		16.00	8.00	34.00	6.64	-0.04	1.72
97	76.5	14.00	12.00	36.00	-0.26	5.32	1.03
98	80.4	18.00	15.00	44.00	7.24	9.30	0.87
99	79.8	18.00	12.00	42.00	8.71	5.28	1.16
100	82.8	15.00	9.00	38.00	4.22	1.32	0.92
101	83.2	18.00	9.00	31.00	10.84	1.27	1.46
102	80.8	18.00	11.00	42.00	9.38	3.94	0.65
103	79.2	15.00	12.00	36.00	2.19	5.32	0.74
104	87.9	20.00	8.00	42.00	16.68	-0.08	1.41
105	90.9	19.00	11.00	43.00	13.37	3.99	1.27
106	107.3	6.00	13.00	29.00	-16.75	7.07	2.10
107	79.6	15.00	13.00	32.00	1.72	6.67	0.84
108	83.1	14.00	9.00	28.00	2.08	1.34	1.34
109	88.3	12.00	12.00	35.00	-3.36	5.44	1.30
110	81.5	16.00	15.00	42.00	3.07	9.35	0.75
111	78.4	12.00	10.00	36.00	-3.27	2.69	0.62
112	85.0	21.00	9.00	41.00	17.76	1.23	0.83
113	79.7	23.00	7.00	39.00	22.03	-1.51	0.88
114	82.6	22.00	7.00	37.00	20.50	-1.48	0.75
115	83.4	19.00	11.00	44.00	11.99	3.94	1.12
116	81.0	13.00	11.00	33.00	-1.39	4.03	1.33
117	80.3	15.00	6.00	31.00	5.45	-2.71	0.79
118	85.3	24.00	8.00	39.00	24.98	-0.16	2.64
119	86.2	13.00	11.00	38.00	-0.81	4.07	1.21
120	84.7	13.00	10.00	29.00	-0.45	2.71	1.32
121	85.0	14.00	11.00	34.00	1.26	4.04	0.98
122	85.4	10.00	8.00	32.00	-5.92	0.08	0.97
123	78.9	9.00	7.00	22.00	-8.10	-1.28	1.69
124	82.1	14.00	11.00	33.00	0.90	4.02	1.29
125	81.9	17.00	8.00	30.00	8.97	-0.06	1.88
126	81.6	14.00	16.00	38.00	-1.78	10.72	0.66
127	80.1	13.00	16.00	33.00	-4.08	10.73	0.84
128	85.9	19.00	9.00	38.00	13.53	1.27	5.52
129	80.7	14.00	10.00	29.00	1.26	2.67	1.36
130	78.9	21.00	12.00	45.00	14.98	5.22	0.76
131	83.0	23.00	8.00	42.00	22.24	-0.15	0.61
132	83.2	20.00	8.00	40.00	15.73	-0.10	1.76
133	83.5	21.00	7.00	43.00	18.51	-1.46	2.72
134	83.1	15.00	9.00	32.00	4.27	1.33	1.85
135	81.2	14.00	8.00	31.00	2.37	-0.01	3.48
136	79.9	10.00	8.00	32.00	-6.39	0.05	1.30
137	82.0	21.00	9.00	40.00	17.15	1.22	4.31
138	80.1	13.00	4.00	26.00	2.16	-5.36	1.58
139	82.9	25.00	10.00	46.00	25.52	2.50	0.72
140	85.2	8.00	10.00	27.00	-11.43	2.80	1.20
141	85.7	11.00	14.00	35.00	-6.91	8.13	0.91
142	85.1	14.00	9.00	29.00	2.34	1.35	1.06
143	85.4	14.00	7.00	36.00	3.46	-1.33	0.60
144	84.5	15.00	12.00	39.00	2.86	5.36	0.94
145	82.1	12.00	10.00	30.00	-2.92	2.71	1.69
146	84.6	10.00	4.00	24.00	-3.86	-5.30	1.46
147	80.6	12.00	7.00	35.00	-1.50	-1.32	1.50
148	85.2	13.00	9.00	37.00	0.14	1.37	1.47
149	88.6	15.00	9.00	35.00	5.05	1.35	1.05
150	86.6	15.00	14.00	44.00	2.05	8.07	1.12
151	86.9	10.00	13.00	33.00	-8.50	6.81	0.82
152	86.4	17.00	12.00	39.00	7.55	5.34	0.85

SAM NO	H#	3H CPM	14C CPM	WIDE CPM	3H DPM	14C DPM	LUMEX %
170	85.0	14.00	15.00	39.00	-0.88	9.42	0.86
171	81.2	14.00	9.00	31.00	1.85	1.33	1.52
172	86.6	16.00	8.00	31.00	7.53	-0.02	1.16
173	85.3	18.00	11.00	39.00	10.13	3.97	1.10
174	93.6	10.00	9.00	28.00	-5.72	1.47	1.96
175	83.9	14.00	14.00	38.00	-0.48	8.06	0.89
176	87.5	19.00	10.00	43.00	13.27	2.62	1.13
177	82.0	19.00	10.00	37.00	12.28	2.59	0.89
178	82.8	15.00	9.00	36.00	4.22	1.52	1.00
179	86.1	8.00	8.00	20.00	-10.29	0.12	3.09
180	89.9	10.00	15.00	34.00	-9.44	9.52	0.73
181	88.6	17.00	12.00	40.00	7.90	5.36	0.95
182	91.2	15.00	8.00	29.00	6.00	0.02	1.63
183	81.7	20.00	6.00	32.00	16.49	-2.79	1.30
184	85.4	19.00	8.00	45.00	13.96	-0.08	1.28
185	77.0	14.00	7.00	37.00	2.36	-1.37	0.89
186	85.7	18.00	11.00	41.00	10.20	3.98	0.93
187	80.3	15.00	7.00	30.00	4.93	-1.37	1.22
188	91.8	19.00	13.00	42.00	12.45	6.69	1.33
189	95.3	11.00	16.00	43.00	-7.22	10.92	1.70
190	83.6	16.00	8.00	28.00	7.06	-0.03	1.12
191	81.1	17.00	10.00	37.00	7.79	2.62	1.20
192	80.7	13.00	5.00	24.00	1.72	-4.02	1.69
193	83.8	17.00	7.00	30.00	9.81	-1.39	1.21
194	87.4	21.00	10.00	46.00	17.73	2.59	0.61
195	81.2	17.00	8.00	32.00	8.87	-0.06	1.28
196	87.3	15.00	15.00	36.00	1.61	9.42	6.29
197	85.2	16.00	13.00	35.00	4.63	6.69	0.98
198	83.5	17.00	8.00	33.00	9.23	-0.05	1.67
199	87.9	13.00	13.00	32.00	-1.70	6.77	0.79
200	146.1	10.00	18.00	45.00	-5.85	14.38	1.37
201	89.1	18.00	12.00	41.00	10.24	5.34	0.83
202	82.5	14.00	12.00	39.00	0.42	5.37	0.85
203	91.6	14.00	11.00	34.00	2.11	4.08	1.66
204	90.5	16.00	15.00	38.00	4.28	9.43	1.87
205	87.1	11.00	11.00	30.00	-5.17	4.11	1.45
206	84.0	8.00	10.00	23.00	-11.50	2.79	1.04
207	87.2	13.00	16.00	40.00	-3.41	10.80	1.15
208	85.9	18.00	11.00	37.00	10.23	3.98	1.11
209	85.4	20.00	12.00	40.00	14.02	5.28	1.10
210	87.6	23.00	14.00	47.00	20.06	7.94	1.01
211	86.0	13.00	11.00	40.00	-0.83	4.06	0.63
212	83.3	12.00	11.00	36.00	-3.33	4.06	1.13
213	87.0	15.00	8.00	31.00	5.36	-0.00	1.45
214	85.4	20.00	6.00	35.00	17.25	-2.78	1.48
215	82.5	8.00	4.00	18.00	-8.42	-5.27	2.50
216	88.7	14.00	7.00	32.00	3.91	-1.32	0.90
217	82.9	11.00	10.00	32.00	-5.01	2.73	0.46
218	83.7	16.00	8.00	38.00	7.06	-0.03	0.59
219	85.2	13.00	12.00	40.00	-1.46	5.40	0.97
220	81.4	17.00	18.00	41.00	3.65	13.35	0.96
221	85.5	15.00	13.00	37.00	2.45	6.71	1.09
222	85.7	17.00	14.00	40.00	6.37	8.03	0.76
223	82.8	19.00	8.00	37.00	13.47	-0.09	0.89
224	83.2	16.00	9.00	36.00	6.46	1.31	0.84
225	82.4	15.00	16.00	37.00	0.48	10.72	1.13
226	79.0	13.00	6.00	29.00	0.99	-2.68	1.49
227	83.1	15.00	13.00	35.00	2.15	6.69	1.09

SAM NO	H#	3H CPM	14C CPM	WIDE CPM	3H DPM	14C DPM	LUMEX %
211	84.3	20.00	8.00	36.00	15.94	-0.10	1.31
212	86.5	21.00	6.00	41.00	19.70	-2.80	0.78
213	90.7	15.00	9.00	31.00	5.37	1.36	3.92
214	86.6	25.00	10.00	41.00	26.46	2.51	2.03
215	85.0	10.00	14.00	32.00	-9.17	8.14	2.57
216	85.7	16.00	6.00	33.00	8.46	-2.71	1.12
217	82.1	15.00	11.00	35.00	3.07	4.00	4.45
218	80.6	14.00	12.00	32.00	0.21	5.35	0.68
219	84.9	11.00	16.00	44.00	-8.04	10.81	0.72
220	86.9	14.00	10.00	34.00	2.04	2.71	1.41
221	88.9	14.00	7.00	24.00	3.93	-1.32	1.38
222	88.2	22.00	10.00	40.00	20.13	2.57	1.21
223	82.0	21.00	10.00	42.00	16.62	2.56	0.58
224	86.0	21.00	6.00	42.00	19.59	-2.80	0.74
225	83.6	13.00	11.00	39.00	-1.11	4.05	1.13
226	81.2	11.00	6.00	24.00	-3.07	-2.64	1.74
227	84.7	10.00	14.00	31.00	-9.19	8.14	0.98
228	81.0	17.00	9.00	37.00	8.31	1.28	1.02
229	82.9	14.00	8.00	29.00	2.59	-0.00	1.08
230	81.5	13.00	11.00	30.00	-1.33	4.03	0.87
231	84.1	12.00	7.00	31.00	-1.12	-1.30	0.68
232	84.8	13.00	10.00	33.00	-0.44	2.71	0.74
233	88.2	9.00	12.00	30.00	-10.09	5.50	1.09
234	86.7	9.00	12.00	30.00	-10.19	5.48	1.70
235	83.8	21.00	7.00	34.00	18.57	-1.46	0.75
236	84.8	19.00	7.00	35.00	14.38	-1.42	1.45
237	88.7	15.00	13.00	37.00	2.87	6.74	0.81
238	84.3	15.00	14.00	42.00	1.77	8.05	1.03
239	83.3	12.00	15.00	41.00	-5.44	9.43	0.78
240	85.3	12.00	12.00	33.00	-3.66	5.42	0.46
241	80.1	15.00	6.00	27.00	5.42	-2.71	1.02
242	87.5	18.00	10.00	37.00	11.04	2.64	0.82
243	85.7	11.00	12.00	27.00	-5.84	5.44	3.17
244	82.8	14.00	7.00	29.00	3.11	-1.34	1.04